

# INVENTORY

## BOMS – INTRODUCTION TO BOMS

A Bill of Materials is a list of **part definitions**, with their **quantities**, used to define such things as:

### BOM DEFINITIONS

---

#### PARENT CHILD BOM

---

- These are parts used to make up a product, e.g. toners and rollers that are specific to a certain model copier machine.
  - A BOM is set up and linked to the **main part definition** (i.e. the equipment/machine part number). When a part is requested in the call screen, the system will list the linked BOM or parts specific to make up this product or main part definition.

#### BOM INCLUSIONS

---

These are parts which are 'included' in a contract (and therefore not billed).

- A BOM is set up and linked to the contract.
- When a linked part is requested in the Call screen, the system will indicate that it is included in the contract, by marking the item included as 'not billable'.

#### TASK BOM

---

- These are parts that are required to perform a Task, e.g. a machine repair or overhaul.

- A BOM is set up and linked to the Task.
- When a Task is generated, the system will automatically raise a part(s) request for the linked part(s) required.

### BENEFITS OF A BOM

---

A Bill of Materials helps visualize how assets and parts are related - what and how many components (parts) are required to make up an item (asset).

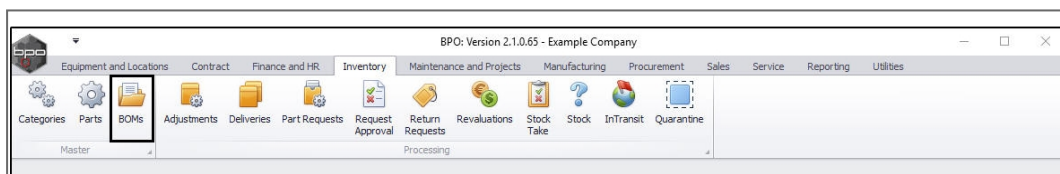
**Maintenance Technicians** use BOMs to identify the parts and quantities they will need from store to repair an item.

**Maintenance Planners** use BOMs to identify what parts and quantities to buy or re-order.

---

**Ribbon Access:** *Inventory > BOM*

---



### THE BOM LISTING SCREEN

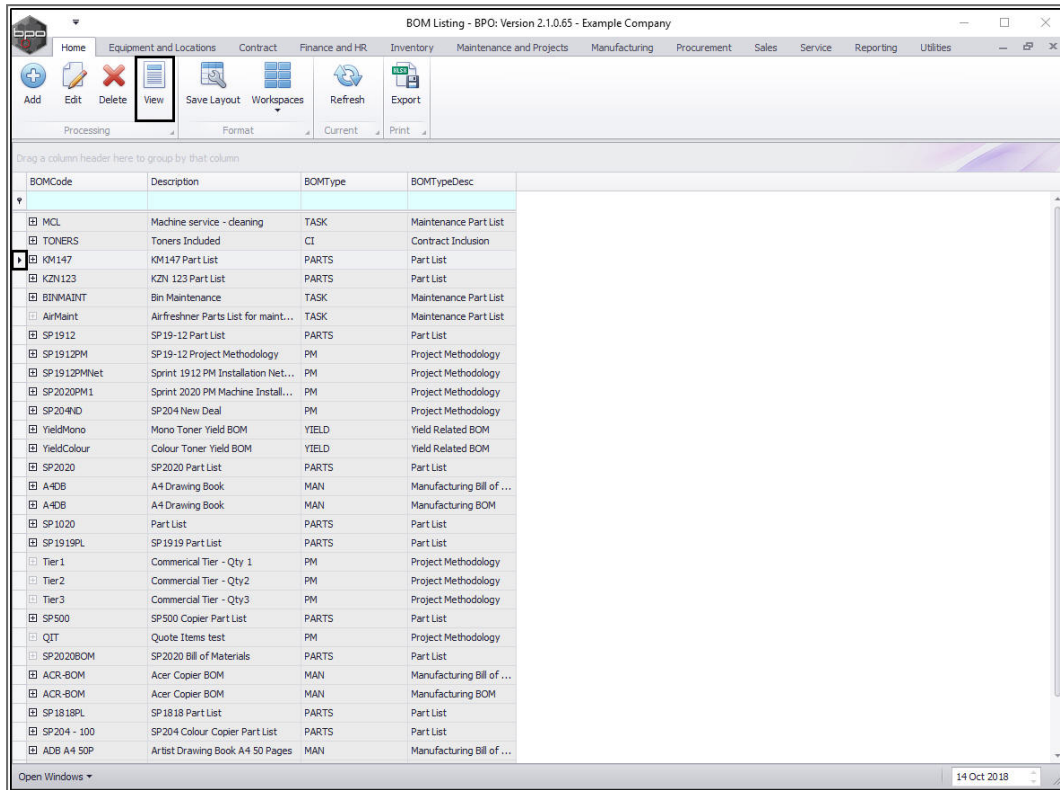
---

The ***BOM Listing*** screen will be displayed.

This will show you a list of all the Bills of Materials set up on the system. Each BOM listed will store information relevant to that BOM, such as the ***parts*** and their ***quantities*** which make up the BOM.

## VIEW SELECTED BOM DETAILS

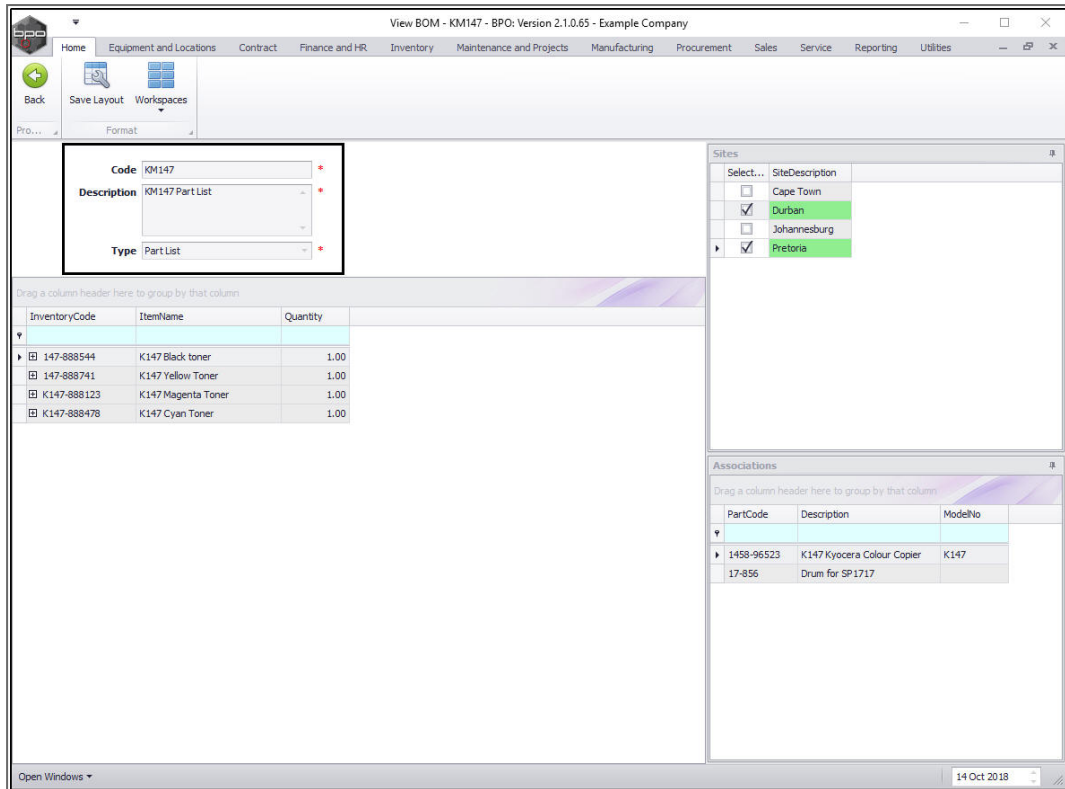
- Select the **row** of the **BOM** where you wish to view the **details**.
- Click on **View**.



BOMCode	Description	BOMType	BOMTypeDesc
MCL	Machine service - cleaning	TASK	Maintenance Part List
TONERS	Toners Included	CI	Contract Inclusion
KM147	KM147 Part List	PARTS	Part List
KZN123	KZN 123 Part List	PARTS	Part List
BDMMAINT	Bin Maintenance	TASK	Maintenance Part List
AirMaint	Airfreshner Parts List for maint...	TASK	Maintenance Part List
SP1912	SP19-12 Part List	PARTS	Part List
SP1912PM	SP19-12 Project Methodology	PM	Project Methodology
SP1912PMNet	Sprint 1912 PM Installation Net...	PM	Project Methodology
SP2020PM1	Sprint 2020 PM Machine Install...	PM	Project Methodology
SP204ND	SP204 New Deal	PM	Project Methodology
YieldMono	Mono Toner Yield BOM	YIELD	Yield Related BOM
YieldColour	Colour Toner Yield BOM	YIELD	Yield Related BOM
SP2020	SP2020 Part List	PARTS	Part List
A4DB	A4 Drawing Book	MAN	Manufacturing Bill of ...
A4DB	A4 Drawing Book	MAN	Manufacturing BOM
SP1020	Part List	PARTS	Part List
SP1919PL	SP1919 Part List	PARTS	Part List
Tier1	Commercial Tier - Qty1	PM	Project Methodology
Tier2	Commercial Tier - Qty2	PM	Project Methodology
Tier3	Commercial Tier - Qty3	PM	Project Methodology
SP500	SP500 Copier Part List	PARTS	Part List
QIT	Quote Items test	PM	Project Methodology
SP2020BOM	SP2020 Bill of Materials	PARTS	Part List
ACR-BOM	Acer Copier BOM	MAN	Manufacturing Bill of ...
ACR-BOM	Acer Copier BOM	MAN	Manufacturing BOM
SP1818PL	SP1818 Part List	PARTS	Part List
SP204 - 100	SP204 Colour Copier Part List	PARTS	Part List
ADB A4 50P	Artist Drawing Book A4 50 Pages	MAN	Manufacturing Bill of ...

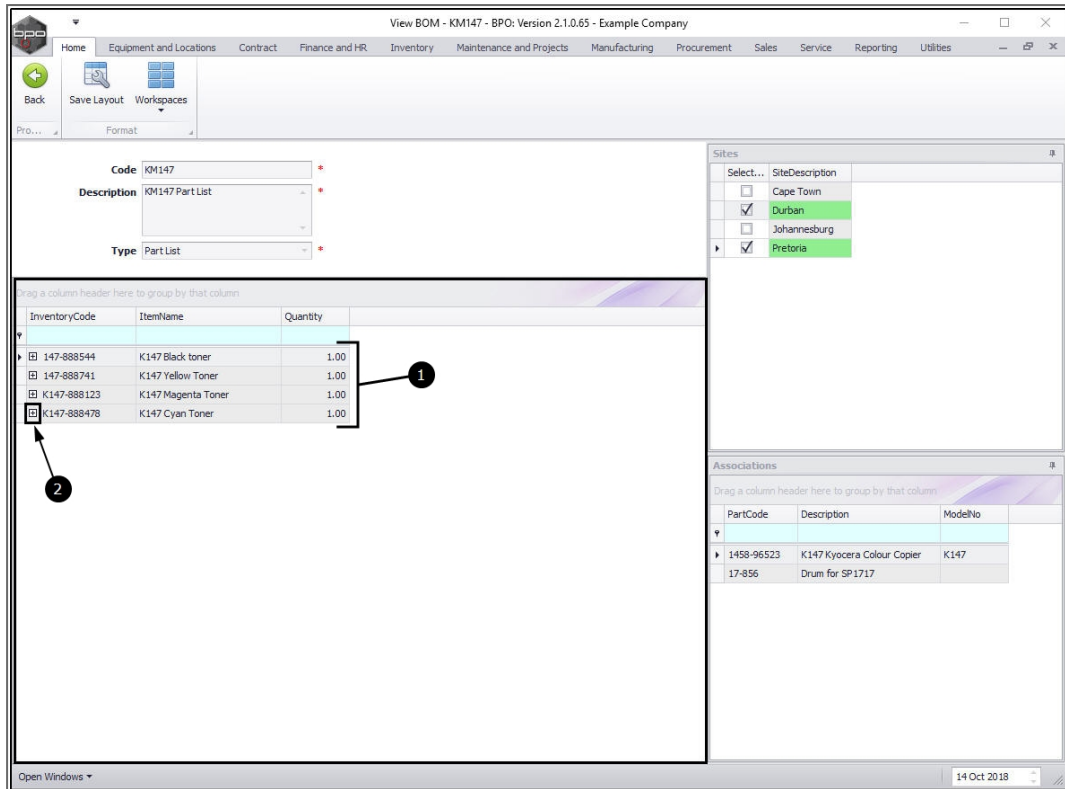
The **View BOM - []** screen will be displayed. Here you can view:

- **Code:** the BOM code.
- **Description:** a brief description of this particular BOM e.g. Machine Service, Bin Maintenance or Part List.
- **Type:** the type of BOM e.g. Part List or Project Methodology.



## VIEW PARTS AND PART QUANTITIES LINKED TO A BOM

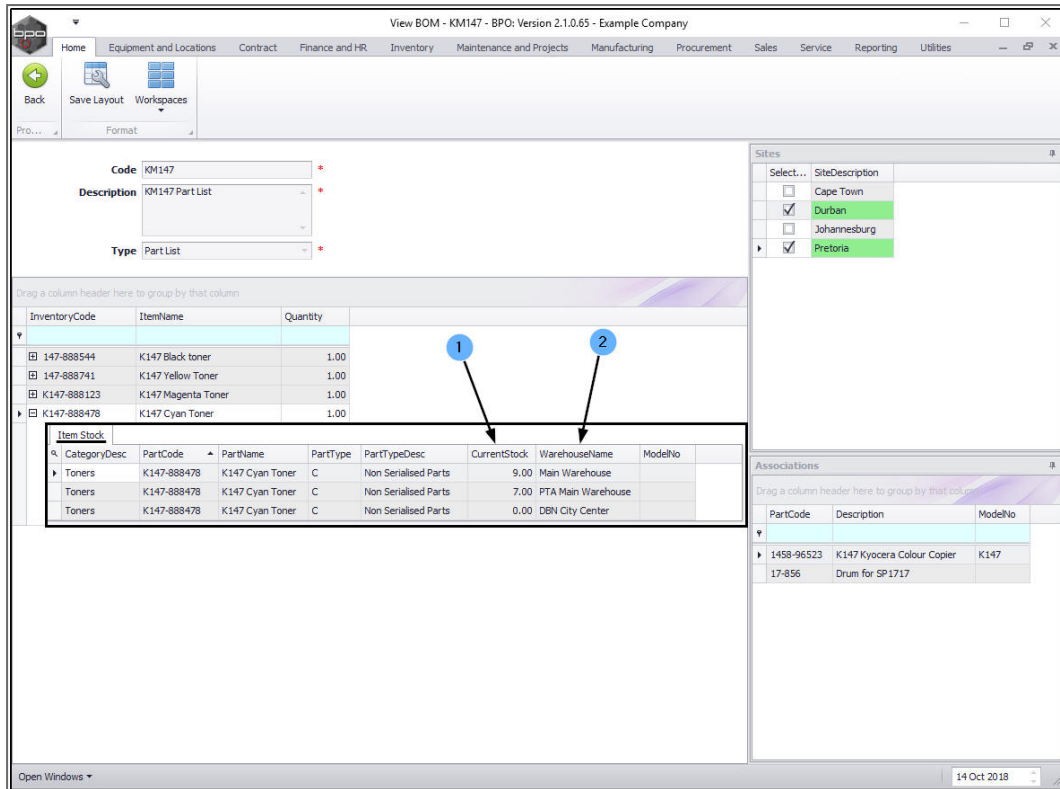
1. In this screen you can view a data grid of all the **parts** linked and their **quantities** required for this BOM.
2. Click on any **expand** button in front of one of the linked parts.



## VIEW AVAILABILITY AND LOCATION OF PARTS LINKED TO A BOM

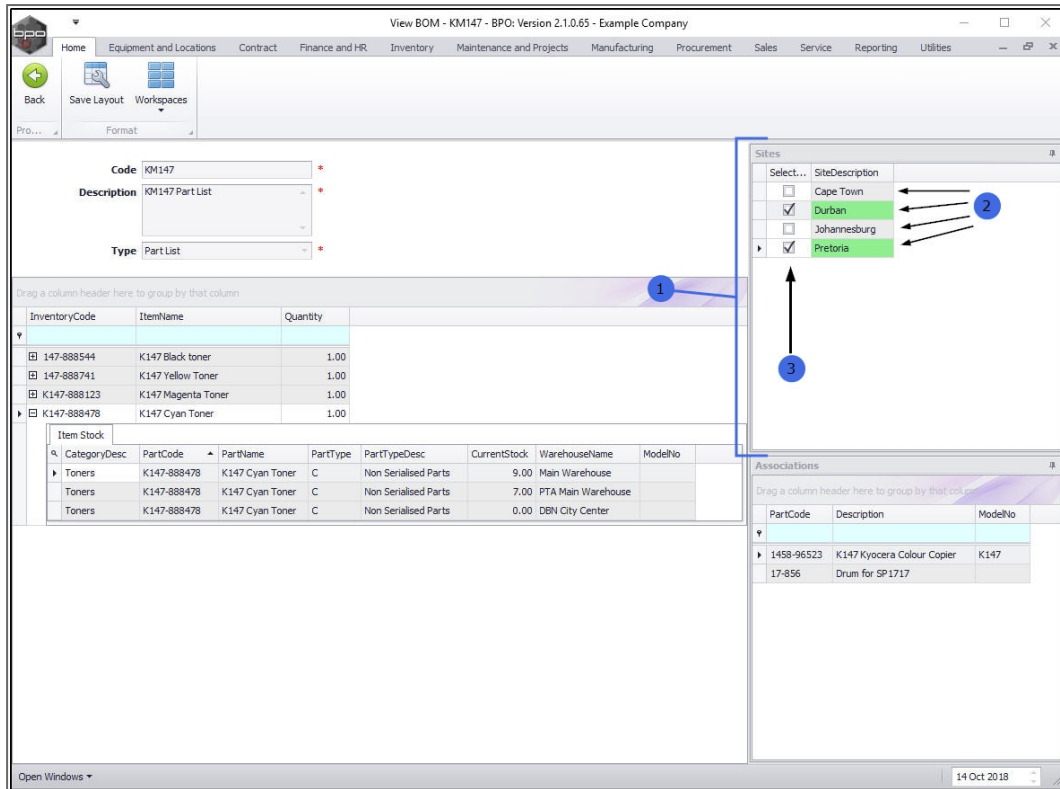
The *Item Stock* data grid for the selected part will be expanded.

1. Here you can view **how much** stock of this part is available (Current Stock).
2. **Where** this stock is available (Warehouse Name).



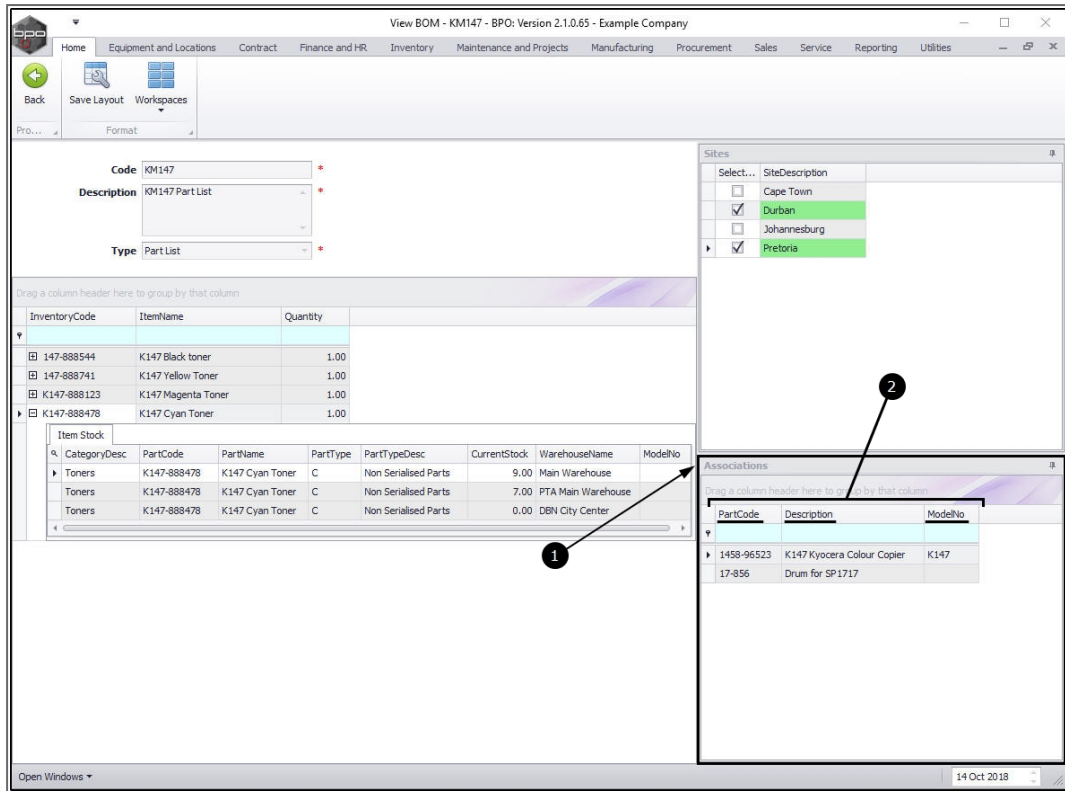
## VIEW SITES LINKED TO A BOM

1. On the right-hand side of the screen is the **Sites** docking panel.
2. This panel lists all the **sites** on the system that can be linked to this BOM.
3. The **Select** column contains check boxes which indicate which sites have been linked.



## VIEW ASSETS LINKED TO A BOM

1. On the right-hand side of the screen, the **Associations** docking panel lists the **assets** (machines/equipment items) that are linked to the BOM.
2. Here you can view the:
  - **Part Code**,
  - **Description** and
  - **Model No.** of the associated part.



View BOM - KM147 - BPO: Version 2.1.0.65 - Example Company

Home Equipment and Locations Contract Finance and HR Inventory Maintenance and Projects Manufacturing Procurement Sales Service Reporting Utilities

Back Save Layout Workspaces

Code: KM147  
Description: KM147 Part List  
Type: Part List

Drag a column header here to group by that column

InventoryCode	ItemName	Quantity
147-888544	K147 Black toner	1.00
147-888741	K147 Yellow Toner	1.00
147-888123	K147 Magenta Toner	1.00
147-888478	K147 Cyan Toner	1.00

Item Stock

CategoryDesc	PartCode	PartName	PartType	PartTypeDesc	CurrentStock	WarehouseName	ModelNo
Toners	K147-888478	K147 Cyan Toner	C	Non Serialised Parts	9.00	Main Warehouse	
Toners	K147-888478	K147 Cyan Toner	C	Non Serialised Parts	7.00	PTA Main Warehouse	
Toners	K147-888478	K147 Cyan Toner	C	Non Serialised Parts	0.00	DBN City Center	

Sites

Select...	SiteDescription
<input type="checkbox"/>	Cape Town
<input checked="" type="checkbox"/>	Durban
<input type="checkbox"/>	Johannesburg
<input checked="" type="checkbox"/>	Pretoria

Associations

PartCode	Description	ModelNo
1458-96523	K147 Kyocera Colour Copier	K147
17-856	Drum for SP1717	

## Related Topics

- [Creating a new Bill of Materials](#)
- [Parent-Child BOM: Linking a BOM to a Part Definition](#)
- [Inclusions BOM: Linking a BOM to a Contract](#)
- [Tasks BOM: Linking a BOM to a Task](#)
- [Add a New Part to a BOM](#)
- [Request a Part from a BOM](#)

BPO.MNU.025