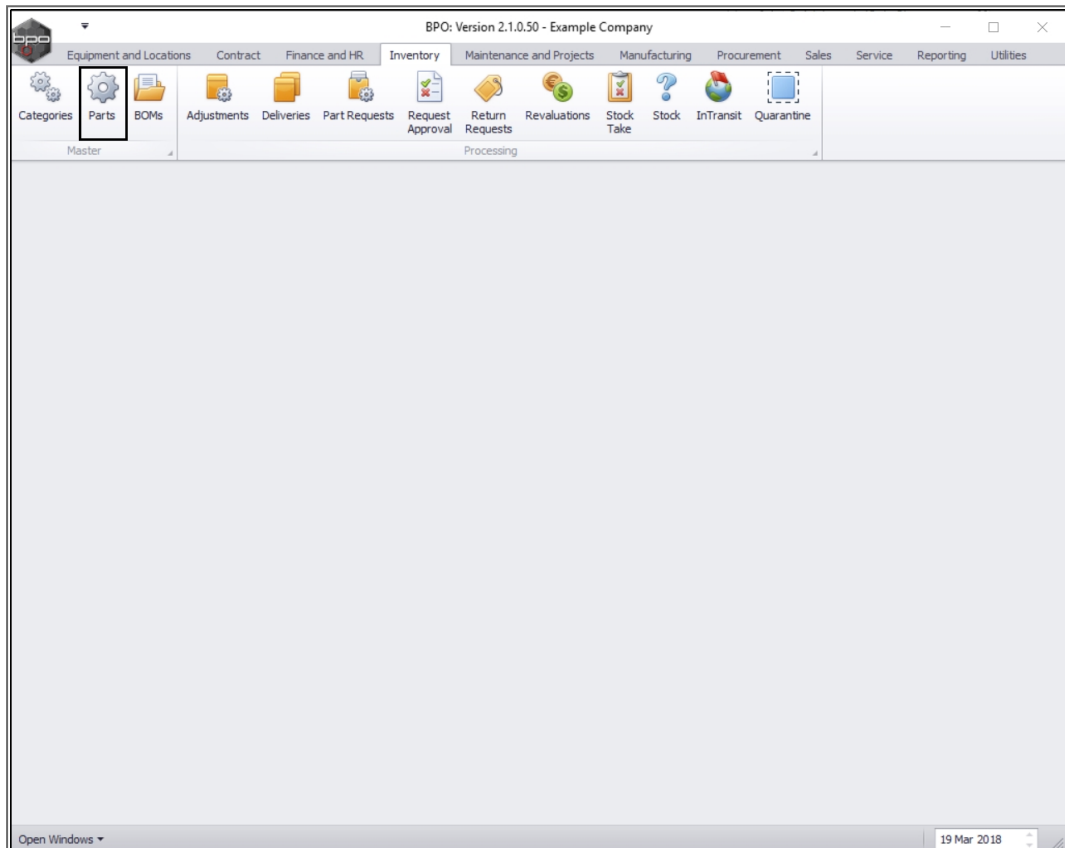


INVENTORY

ASSIGN METER YIELD

Ribbon Access: Inventory > Parts



- The **Part Listing** screen will be displayed.
- Click on the **row selector** in front of the **part number** you wish to **assign** a **meter yield** to.
- Click on **Edit**.

Part Listing - BPO: Version 2.1.0.50 - Example Company

Home Equipment and Locations Contract Finance and HR Inventory Maintenance and Projects Manufacturing Procurement Sales Service Reporting Utilities

Add Edit Delete View Save Layout Workspaces Refresh Export Reports

Processing Format Current Print Reports

Links
Enter text to search...

Functions

- Items Supplied
- Substitutes
- Documents
- BOMs
- Stock Control

Processing

- Requisitions
- Purchase Orders

Drag a column header here to group by that column

PartCode	Description	Status	PartType	CatDescription	Weight	Volume	ModelNo	UnitOfMeasure	ShelfLife	PeriodType	PeriodTypeDesc
SP2020	SP2020 Sprint Colour Mul...	A	A	Hardware	5.2		SP2020	ea	5.00	yyyy	Years
2020-147K	Black toner SP2020	A	C	Toners	0.500			kg	24.00	m	Months
SP1919	SP1919 Sprint Colour MFC	A	A	Hardware			1919		0.00		
SP19-147K	Black Toner SP1919	A	C	Toners					0.00		
SP19-147C	Cyan Toner - SP1919	A	C	Toners					0.00		
SP19-147Y	Yellow Toner - SP1919	A	C	Toners					0.00		
SP19-147M	Magenta toner - SP1919	A	C	Toners					0.00		
2020-147M	Magenta toner SP2020	A	C	Toners					0.00		
2020-147C	Cyan toner SP2020	A	C	Toners					0.00		
CL-100-965	Cleaner	A	C	Stationery					0.00		
SP1818	Sprint copier	A	A	Hardware					0.00		
1458-96523	K147 Kyocera Colour Co...	A	A	Kyocera Mult...			K147		0.00	m	Months
147-888544	K147 Black toner	A	C	Toners					0.00		
K2N-122TFB	Kruger ZN Fax Machine	A	A	Hardware			ZN122		0.00		
12345ZN	ZN Paper	A	C	Stationery					0.00		
147-888741	K147 Yellow Toner	A	C	Toners					0.00		
K147-888...	K147 Magenta Toner	A	C	Toners					0.00		
K147-888...	K147 Cyan Toner	A	C	Toners					0.00		
KM250MFP	Konica Minolta Colour Mu...	A	A	Hardware					0.00		
9855632	Air Freshner	A	C	Stationery					0.00		
SP19-123...	SP19-12 Colour Copier	A	A	Hardware			SP19-12		0.00		
12-098765	SP19-12 Black Toner	A	C	Toners					0.00		
2020-147L	SP2020 Clear Toner	A	C	Toners					0.00		
102-7854	Network cable	A	C	Spare Parts					0.00		
SP204	SP204 Colour Copier	A	A	Hardware			SP204		0.00		
204-147K	SP204 Black Toner	A	A	Toners					0.00		

Open Windows 19 Mar 2018

- The **Edit Part - []** screen will be displayed.
- On the right hand side of this screen is the **Yield Config** docking panel.

Edit Part - Code2020-147K - BPO: Version 2.1.0.50 - Example Company

Home Equipment and Locations Contract Finance and HR Inventory Maintenance and Projects Manufacturing Procurement Sales Service Reporting Utilities

Save Back Save Layout Workspaces

Process Format

Links
Enter text to search...

Functions

- Items Supplied
- Substitutes
- Documents
- BOMs
- Stock Control

Processing

- Requisitions
- Purchase Orders

Part Code: 2020-147K

Description: Black toner SP2020

Model No:

Part Type: Non Serialised Parts

Taxable: ☒

Tax Rate: 14.00

Category: Toners

Weight: 0.500

Volume:

Unit of Measure: kg

Single Supplier: ☐

Shelf Life: 24

Shelf Life Period: Months

Depreciation Method:

Wear and Tear Method:

Maintenance Craft: Technician

Manufacturer: Kyocera

Default Fee: Service

Defaults

Select...	SiteDescription	WhseName	BinName	IsPrimarySiteWhse	StockTak
<input type="checkbox"/>	Durban	Main Warehouse	DBN-A1	No	2500
<input type="checkbox"/>	Durban	Customer Equipme...		No	
<input type="checkbox"/>	Durban	Off Site Warehouse		No	
<input type="checkbox"/>	Durban	George Warehouse		No	

BOM Allocation

Select...	BOMCode	Description	BOMType	BOMTypeDesc
<input type="checkbox"/>	MCL	Machine service - cleaning	TASK	Maintenance Pa
<input type="checkbox"/>	TONERS	Toners Included	CI	Contract Includ
<input type="checkbox"/>	KM147	KM147 Part List	PARTS	Part List
<input type="checkbox"/>	KZN123	KZN 123 Part List	PARTS	Part List

Part Meters

Select...	MeterDefCode	MeterDescription	MeterType	Unit	ActionType
-----------	--------------	------------------	-----------	------	------------

Yield Config

Select...	MeterDefCode	MeterDesc	Yield	YieldFactor	ServiceCode	ServiceDes
<input type="checkbox"/>	Mono	Mono meter	0.00	0.00		
<input type="checkbox"/>	Colour	Colour Meter	0.00	0.00		
<input type="checkbox"/>	MonoA3	Mono A3	0.00	0.00		
<input type="checkbox"/>	ColourA3	Colour A3	0.00	0.00		

Open Windows

19 Mar 2018

- In the **Select** column, click on the **checkbox** in front of the **meter definition** that should relate to this inventory definition.
 - In this image, **Mono** - Mono meter has been selected.

Edit Part - Code2020-147K - BPO: Version 2.1.0.50 - Example Company

Home Equipment and Locations Contract Finance and HR Inventory Maintenance and Projects Manufacturing Procurement Sales Service Reporting Utilities

Save Back Save Layout Workspaces

Process Format

Links
Enter text to search...

Functions

- Items Supplied
- Substitutes
- Documents
- BOMs
- Stock Control

Processing

- Requisitions
- Purchase Orders

Part Code: 2020-147K

Description: Black toner SP2020

Model No:

Part Type: Non Serialised Parts

Taxable: ☒

Tax Rate: 14.00

Category: Toners

Weight: 0.500

Volume:

Unit of Measure: kg

Single Supplier: ☐

Shelf Life: 24

Shelf Life Period: Months

Depreciation Method:

Wear and Tear Method:

Maintenance Craft: Technician

Manufacturer: Kyocera

Default Fee: Service

Defaults

Select...	SiteDescription	WhseName	BinName	IsPrimarySiteWhse	StockTak
<input type="checkbox"/>	Durban	Main Warehouse	DBN-A1	No	2500
<input type="checkbox"/>	Durban	Customer Equipme...		No	
<input type="checkbox"/>	Durban	Off Site Warehouse		No	
<input type="checkbox"/>	Durban	George Warehouse		No	

BOM Allocation

Select...	BOMCode	Description	BOMType	BOMTypeDesc
<input type="checkbox"/>	MCL	Machine service - cleaning	TASK	Maintenance Pa
<input type="checkbox"/>	TONERS	Toners Included	CI	Contract Includ
<input type="checkbox"/>	KM147	KM147 Part List	PARTS	Part List
<input type="checkbox"/>	KZN123	KZN 123 Part List	PARTS	Part List

Part Meters

Select...	MeterDefCode	MeterDescription	MeterType	Unit	ActionType
-----------	--------------	------------------	-----------	------	------------

Yield Config

Select...	MeterDefCode	MeterDesc	Yield	YieldFactor	ServiceCode	ServiceDesc
<input checked="" type="checkbox"/>	Mono	Mono meter	0.00	0.00		
<input type="checkbox"/>	Colour	Colour Meter	0.00	0.00		
<input type="checkbox"/>	MonoA3	Mono A3	0.00	0.00		
<input type="checkbox"/>	ColourA3	Colour A3	0.00	0.00		

Open Windows

19 Mar 2018

- **Yield:** Click in this text box and either type in or use the arrow indicators to select the **yield amount** in meter units, e.g. **5000** (this toner will yield 5000 copies).

Edit Part - Code2020-147K - BPO: Version 2.1.0.50 - Example Company

Home Equipment and Locations Contract Finance and HR Inventory Maintenance and Projects Manufacturing Procurement Sales Service Reporting Utilities

Save Back Save Layout Workspaces

Process Format

Links
Enter text to search...

Functions

- Items Supplied
- Substitutes
- Documents
- BOMs
- Stock Control

Processing

- Requisitions
- Purchase Orders

Part Code: 2020-147K

Description: Black toner SP2020

Model No:

Part Type: Non Serialised Parts

Taxable: ☒

Tax Rate: 14.00

Category: Toners

Weight: 0.500

Volume:

Unit of Measure: kg

Single Supplier: ☐

Shelf Life: 24

Shelf Life Period: Months

Depreciation Method:

Wear and Tear Method:

Maintenance Craft: Technician

Manufacturer: Kyocera

Default Fee: Service

Defaults

Select...	SiteDescription	WhseName	BinName	IsPrimarySiteWhse	StockTak
<input type="checkbox"/>	Durban	Main Warehouse	DBN-A1	No	2500
<input type="checkbox"/>	Durban	Customer Equipme...		No	
<input type="checkbox"/>	Durban	Off Site Warehouse		No	
<input type="checkbox"/>	Durban	George Warehouse		No	

BOM Allocation

Select...	BOMCode	Description	BOMType	BOMTypeDesc
<input type="checkbox"/>	MCL	Machine service - cleaning	TASK	Maintenance Pa
<input type="checkbox"/>	TONERS	Toners Included	CI	Contract Includ
<input type="checkbox"/>	KM147	KM147 Part List	PARTS	Part List
<input type="checkbox"/>	KZN123	KZN 123 Part List	PARTS	Part List

Part Meters

Select...	MeterDefCode	MeterDescription	MeterType	Unit	ActionType
-----------	--------------	------------------	-----------	------	------------

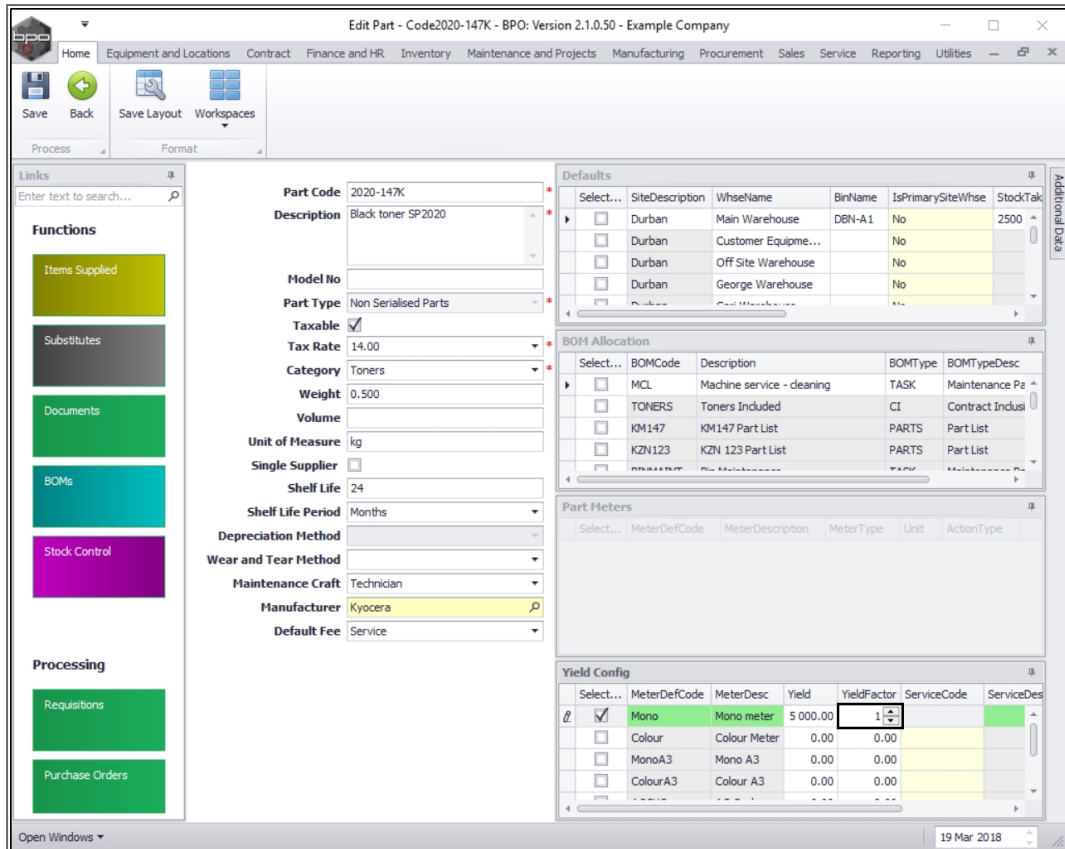
Yield Config

Select...	MeterDefCode	MeterDesc	Yield	YieldFactor	ServiceCode	ServiceDesc
<input checked="" type="checkbox"/>	Mono	Mono meter	5000	0.00		
<input type="checkbox"/>	Colour	Colour Meter	0.00	0.00		
<input type="checkbox"/>	MonoA3	Mono A3	0.00	0.00		
<input type="checkbox"/>	ColourA3	Colour A3	0.00	0.00		

Open Windows

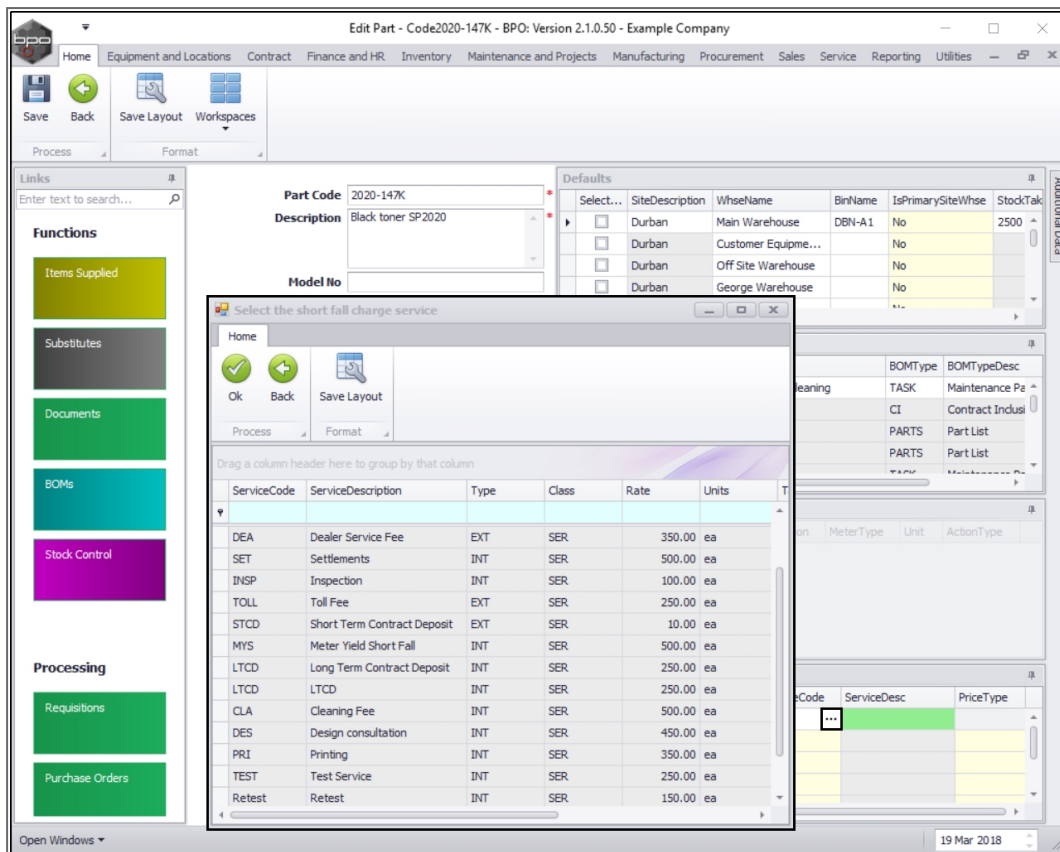
19 Mar 2018

- **Yield Factor:** Click in this text box and either type in or use the arrow indicators to select the yield factor. This must be set to **1**.



Scroll right in the Yield Config docking panel to view the remaining 3 columns.

- **Service Code:** Click in this text box to reveal an *ellipsis* button.
- Click on this button to display the **Select the short fall charge service** pop up screen.



- Click on the **row selector** in front of the **short fall charge service** that should be used for **Short Yield Instant Billing**.
 - In this image, **MYS - Meter Yield Short Fall** has been selected.
- Click on **Ok**.

CO3 Edit Part - Code2020-147K - BPO: Version 2.1.0.50 - Example Company

Home Equipment and Locations Contract Finance and HR Inventory Maintenance and Projects Manufacturing Procurement Sales Service Reporting Utilities

Save Back Save Layout Workspaces

Process Format

Links Enter text to search...

Functions

- Items Supplied
- Substitutes
- Documents
- BOMs
- Stock Control

Processing

- Requisitions
- Purchase Orders

Part Code 2020-147K

Description Black toner SP2020

Model No

Defaults

Select...	SiteDescription	WhseName	BinName	IsPrimarySiteWhse	StockTak
<input type="checkbox"/>	Durban	Main Warehouse	DBN-A1	No	2500
<input type="checkbox"/>	Durban	Customer Equipme...		No	
<input type="checkbox"/>	Durban	Off Site Warehouse		No	
<input type="checkbox"/>	Durban	George Warehouse		No	

Select the short fall charge service

Home

Ok Back Save Layout

Process Format

Drag a column header here to group by that column

ServiceCode	ServiceDescription	Type	Class	Rate	Units
DEA	Dealer Service Fee	EXT	SER	350.00	ea
SET	Settlements	INT	SER	500.00	ea
INSP	Inspection	INT	SER	100.00	ea
TOLL	Toll Fee	EXT	SER	250.00	ea
STCD	Short Term Contract Deposit	EXT	SER	10.00	ea
MYS	Meter Yield Short Fall	INT	SER	500.00	ea
LTCD	Long Term Contract Deposit	INT	SER	250.00	ea
LTCD	LTCD	INT	SER	250.00	ea
CLA	Cleaning Fee	INT	SER	500.00	ea
DES	Design consultation	INT	SER	450.00	ea
PRI	Printing	INT	SER	350.00	ea
TEST	Test Service	INT	SER	250.00	ea
Retest	Retest	INT	SER	150.00	ea

Additional Data

BOMType	BOMTypeDesc
cleaning	TASK Maintenance Pa
CI	Contract Includ
PARTS	Part List
PARTS	Part List

ServiceCode	ServiceDesc	PriceType
...		

Open Windows

19 Mar 2018

- The **Service Code** and **Service Description** fields will now be populated with the selected short fall charge service details.

Edit Part - Code2020-147K - BPO: Version 2.1.0.50 - Example Company

Home Equipment and Locations Contract Finance and HR Inventory Maintenance and Projects Manufacturing Procurement Sales Service Reporting Utilities

Save Back Save Layout Workspaces

Process Format

Links
Enter text to search...

Functions

- Items Supplied
- Substitutes
- Documents
- BOMs
- Stock Control

Processing

- Requisitions
- Purchase Orders

Part Code: 2020-147K

Description: Black toner SP2020

Model No:

Part Type: Non Serialised Parts

Taxable: ☒

Tax Rate: 14.00

Category: Toners

Weight: 0.500

Volume:

Unit of Measure: kg

Single Supplier: ☐

Shelf Life: 24

Shelf Life Period: Months

Depreciation Method:

Wear and Tear Method:

Maintenance Craft: Technician

Manufacturer: Kyocera

Default Fee: Service

Defaults

Select...	SiteDescription	WhseName	BinName	IsPrimarySiteWhse	StockTak
<input type="checkbox"/>	Durban	Main Warehouse	DBN-A1	No	2500
<input type="checkbox"/>	Durban	Customer Equipme...		No	
<input type="checkbox"/>	Durban	Off Site Warehouse		No	
<input type="checkbox"/>	Durban	George Warehouse		No	

BOM Allocation

Select...	BOMCode	Description	BOMType	BOMTypeDesc
<input type="checkbox"/>	MCL	Machine service - cleaning	TASK	Maintenance Pa
<input type="checkbox"/>	TONERS	Toners Included	CI	Contract Includ
<input type="checkbox"/>	KM147	KM147 Part List	PARTS	Part List
<input type="checkbox"/>	KZN123	KZN 123 Part List	PARTS	Part List

Part Meters

Select...	MeterDefCode	MeterDescription	MeterType	Unit	ActionType
-----------	--------------	------------------	-----------	------	------------

Yield Config

MeterDesc	Yield	YieldFactor	ServiceCode	ServiceDesc	PriceType
I Anono meter	5 000.00	1.00	MYS	Meter Yield Short Fall	
Colour Meter	0.00	0.00			
Anono A3	0.00	0.00			
Colour A3	0.00	0.00			

Open Windows

19 Mar 2018

- **Price Type:** Click on the drop-down arrow and select from the menu whether the **Short Yield Instant Billing** is to be based on the Cost Price or the Selling Price.

Edit Part - Code2020-147K - BPO: Version 2.1.0.50 - Example Company

Home Equipment and Locations Contract Finance and HR Inventory Maintenance and Projects Manufacturing Procurement Sales Service Reporting Utilities

Save Back Save Layout Workspaces

Process Format

Links
Enter text to search...

Functions

- Items Supplied
- Substitutes
- Documents
- BOMs
- Stock Control

Processing

- Requisitions
- Purchase Orders

Part Code: 2020-147K

Description: Black toner SP2020

Model No:

Part Type: Non Serialised Parts

Taxable: ☒

Tax Rate: 14.00

Category: Toners

Weight: 0.500

Volume:

Unit of Measure: kg

Single Supplier: ☐

Shelf Life: 24

Shelf Life Period: Months

Depreciation Method:

Wear and Tear Method:

Maintenance Craft: Technician

Manufacturer: Kyocera

Default Fee: Service

Defaults

Select...	SiteDescription	WhseName	BinName	IsPrimarySiteWhse	StockTak
<input type="checkbox"/>	Durban	Main Warehouse	DBN-A1	No	2500
<input type="checkbox"/>	Durban	Customer Equipme...		No	
<input type="checkbox"/>	Durban	Off Site Warehouse		No	
<input type="checkbox"/>	Durban	George Warehouse		No	

BOM Allocation

Select...	BOMCode	Description	BOMType	BOMTypeDesc
<input type="checkbox"/>	MCL	Machine service - cleaning	TASK	Maintenance Pa
<input type="checkbox"/>	TONERS	Toners Included	CI	Contract Includ
<input type="checkbox"/>	KM147	KM147 Part List	PARTS	Part List
<input type="checkbox"/>	KZN123	KZN 123 Part List	PARTS	Part List

Part Meters

Select...	MeterDefCode	MeterDescription	MeterType	Unit	ActionType
<input type="checkbox"/>					

Yield Config

MeterDesc	Yield	YieldFactor	ServiceCode	S
Color meter	5 000.00	1.00	MYS	Meter Yield Short Fall
Colour Meter	0.00	0.00		
Aono A3	0.00	0.00		
Colour A3	0.00	0.00		

Open Windows

19 Mar 2018

SAVE METER YIELD

- When you have finished assigning the meter yield details to this inventory definition, click on **Save**.

Edit Part - Code2020-147K - BPO: Version 2.1.0.50 - Example Company

Home Equipment and Locations Contract Finance and HR Inventory Maintenance and Projects Manufacturing Procurement Sales Service Reporting Utilities

Save Back Save Layout Workspaces

Process Format

Links
Enter text to search...

Functions

- Items Supplied
- Substitutes
- Documents
- BOMs
- Stock Control

Processing

- Requisitions
- Purchase Orders

Part Code: 2020-147K

Description: Black toner SP2020

Model No:

Part Type: Non Serialised Parts

Taxable: ☒

Tax Rate: 14.00

Category: Toners

Weight: 0.500

Volume:

Unit of Measure: kg

Single Supplier: ☐

Shelf Life: 24

Shelf Life Period: Months

Depreciation Method:

Wear and Tear Method:

Maintenance Craft: Technician

Manufacturer: Kyocera

Default Fee: Service

Defaults

Select...	SiteDescription	WhseName	BinName	IsPrimarySiteWhse	StockTak
<input type="checkbox"/>	Durban	Main Warehouse	DBN-A1	No	2500
<input type="checkbox"/>	Durban	Customer Equipme...		No	
<input type="checkbox"/>	Durban	Off Site Warehouse		No	
<input type="checkbox"/>	Durban	George Warehouse		No	

BOM Allocation

Select...	BOMCode	Description	BOMType	BOMTypeDesc
<input type="checkbox"/>	MCL	Machine service - cleaning	TASK	Maintenance Pa
<input type="checkbox"/>	TONERS	Toners Included	CI	Contract Includ
<input type="checkbox"/>	KM147	KM147 Part List	PARTS	Part List
<input type="checkbox"/>	KZN123	KZN 123 Part List	PARTS	Part List

Part Meters

Select...	MeterDefCode	MeterDescription	MeterType	Unit	ActionType
-----------	--------------	------------------	-----------	------	------------

Yield Config

MeterDesc	Yield	YieldFactor	ServiceCode	ServiceDesc	PriceType
Kono meter	5 000.00	1.00	MY5	Meter Yield Short Fall	Cost Price
Colour Meter	0.00	0.00			
Kono A3	0.00	0.00			
Colour A3	0.00	0.00			

Open Windows

19 Mar 2018

- The meter yield details will be **saved** and you will return to the **Part Listing** screen.

Part Listing - BPO: Version 2.1.0.50 - Example Company

Home Equipment and Locations Contract Finance and HR Inventory Maintenance and Projects Manufacturing Procurement Sales Service Reporting Utilities

Add Edit Delete View Save Layout Workspaces Refresh Export Reports

Processing Format Current Print Reports

Links

Enter text to search...

Functions

- Items Supplied
- Substitutes
- Documents
- BOMs
- Stock Control

Processing

- Requisitions
- Purchase Orders

Drag a column header here to group by that column

PartCode	Description	Status	PartType	CatDescription	Weight	Volume	ModelNo	UnitOfMeasure	ShelfLife	PeriodType	PeriodTypeDesc
SP2020	SP2020 Sprint Colour Mul...	A	A	Hardware	5.2		SP2020	ea	5.00	yyyy	Years
2020-147K	Black toner SP2020	A	C	Toners	0.500			kg	24.00	m	Months
SP1919	SP1919 Sprint Colour MFC	A	A	Hardware			1919		0.00		
SP19-147K	Black Toner SP1919	A	C	Toners					0.00		
SP19-147C	Cyan Toner - SP1919	A	C	Toners					0.00		
SP19-147Y	Yellow Toner - SP1919	A	C	Toners					0.00		
SP19-147M	Magenta toner - SP1919	A	C	Toners					0.00		
2020-147M	Magenta toner SP2020	A	C	Toners					0.00		
2020-147C	Cyan toner SP2020	A	C	Toners					0.00		
CL-100-965	Cleaner	A	C	Stationery					0.00		
SP1818	Sprint copier	A	A	Hardware					0.00		
1458-96523	K147 Kyocera Colour Co...	A	A	Kyocera Mult...			K147		0.00	m	Months
147-888544	K147 Black toner	A	C	Toners					0.00		
K2N-122TFB	Kruger ZN Fax Machine	A	A	Hardware			ZN122		0.00		
12345ZN	ZN Paper	A	C	Stationery					0.00		
147-888741	K147 Yellow Toner	A	C	Toners					0.00		
K147-888...	K147 Magenta Toner	A	C	Toners					0.00		
K147-888...	K147 Cyan Toner	A	C	Toners					0.00		
KM250MFP	Konica Minolta Colour Mu...	A	A	Hardware					0.00		
9855632	Air Freshner	A	C	Stationery					0.00		
SP19-123...	SP19-12 Colour Copier	A	A	Hardware			SP19-12		0.00		
12-098765	SP19-12 Black Toner	A	C	Toners					0.00		
2020-147L	SP2020 Clear Toner	A	C	Toners					0.00		
102-7854	Network cable	A	C	Spare Parts					0.00		
SP204	SP204 Colour Copier	A	A	Hardware			SP204		0.00		
204-147K	SP204 Black Toner	A	A	Toners					0.00		

Open Windows

19 Mar 2018

Related Topics

- Refer to
 - Calls: Requesting Parts from Store** for extra information on monitoring yield checks.
- Refer to
 - Yield Control - Short Yield Instant Billing** for extra information on yield control. If a meter short yield exists, the system places a billable service (as defined on the yield controlled part) on the work order for the amount relating to the short yield.

MNU.026.023