

INVENTORY

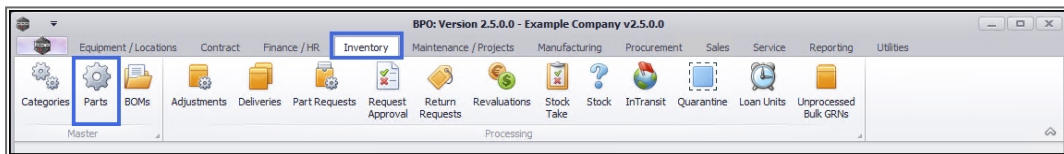
PARTS - VIEW

A Part Definition is a way of classifying a part when dealing with inventory.

The **View Part** screen only allows you to view the information related to the selected Part Definition, no changes can be made or saved to the Part Definition information from this screen.

The View Part screen will differ slightly for a **C**-class part definitions compared to an **A** or **B**-class part definition. The differences are set out below.

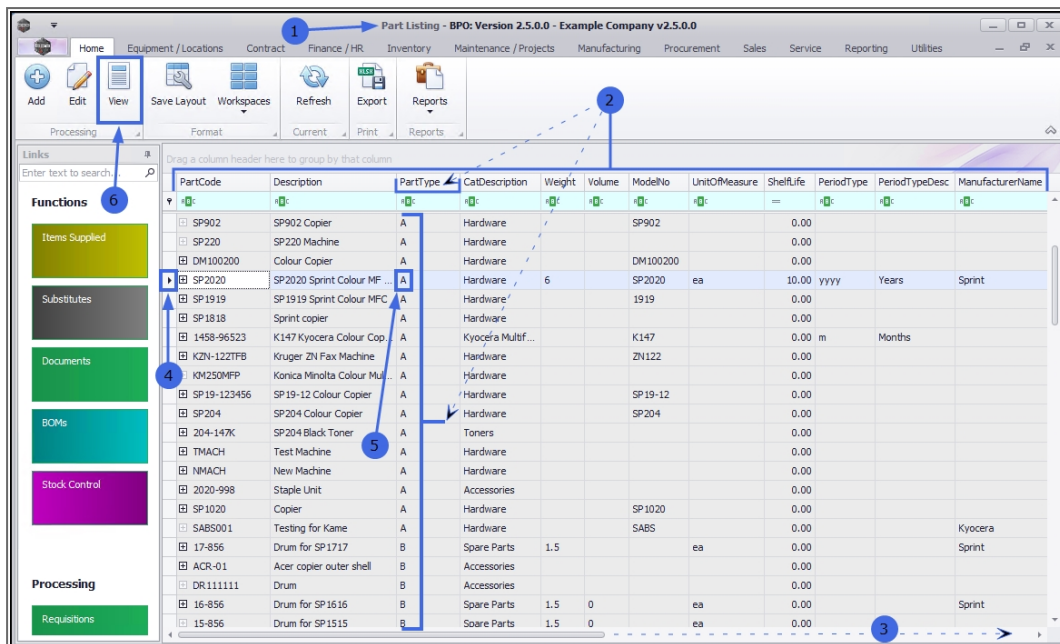
Ribbon Access: *Inventory > Parts*



1. The **Part Listing** screen will be displayed.
2. The data grid will contain all the **A**, **B** and **C**-class part definitions **details** in column form.
3. Scroll right to view the remaining part definition detail columns.

VIEW A OR B-CLASS PART DEFINITION

4. Select the **row** of the **A** or **B**-class part definition where you wish to view more information.
5. Check the **Part Type** column to ensure that you have selected an **A** or **B**-class part definition.
6. Click on **View**.



1. The **View Part** screen will open.
2. You will note that there is only a **Back** button on this screen. This is a view only screen and no changes can be made or saved.

VIEW PART DEFINITION DETAILS

3. On the left of the screen, are the part definition **details** fields which reflect the columns viewed in the previous **Part Listing** screen.

All of these fields are available for an **A** or **B-class** part definition.

4. As this is an **A-class** part definition, the **Part Type** is '*Serialised Equipment*'.
 - the Part Type for a **B-class** part definition would be ***Serialised Spares***.

Note: For descriptions of these fields refer to [Add Part Definition Details](#).

VIEW PART DEFINITION INFORMATION PANELS

- On the right of the screen, are the part definition information panels:
 - Defaults**
 - BOM Allocation**
 - Part Meters**
 - Yield Config**

These panels are docked by default but can be unpinned according to your requirements.

All of these panels are available for an **A** or **B**-class part definition.

View Part - SP2020 - BPO: Version 2.5.0.0 - Example Company v2.5.0.0

Home Equipment / Locations Contract Finance / HR Inventory Maintenance / Projects Manufacturing Procurement Sales Service Reporting Utilities

Back Save Layout Workspaces

Links

Enter text to search...

Functions

Items Supplied

Substitutes

Documents

BOMs

Stock Control

Processing

Requisitions

Part Code: SP2020

Description: SP2020 Sprint Colour MF Copier

Model No: SP2020

Part Type: Serialized Equipment

Taxable: ☒

Tax Rate: 15.00

Category:

Weight: 6

Volume:

Unit of Measure: ea

Single Supplier: ☐

Shelf Life: 10

Shelf Life Period: Years

Depreciation Method: 5 Year Straight Line

Wear and Tear Method: 3 Year straight line

Maintenance Craft: Technician

Manufacturer: Sprint

Default Fee:

Duty Cycle: 1500

Life Cycle: 25000

Defaults

Select...	SiteDescription	WhseName	BinName	IsPrimarySiteWhse	AmendDate
<input checked="" type="checkbox"/>	Durban	George_Whse	George_Bin	No	06/10/2020
<input checked="" type="checkbox"/>	Pretoria	PTA Main Warehouse	PM-A1	No	06/10/2020
<input type="checkbox"/>	Durban	JohnS_Boot		No	01/01/1900
<input type="checkbox"/>	Durban	OTC_Whse_DBN		No	01/01/1900

BOM Allocation

Select...	BOMCode	Description	BOMType	BOMTypeDesc	Quantity
<input checked="" type="checkbox"/>	SP2020PM1	Sprint 2020 PM Machine In...	PM	Project Methodology	1.00
<input type="checkbox"/>	SP2020ID	SP204 New Deal	PM	Project Methodology	0.00
<input type="checkbox"/>	YieldMono	Mono Toner Yield BOM	YIELD	Yield Related BOM	0.00
<input type="checkbox"/>	SP2020	SP2020 Part List	PARTS	Part List	0.00

Part Masters

Select...	MeterDefCode	MeterDescription	MeterType	Unit	ActionType
<input type="checkbox"/>	ClearA3	Clear A3	CYCLE	Copies	ABS
<input checked="" type="checkbox"/>	Colour	Colour Meter	CYCLE	Copies	ABS
<input type="checkbox"/>	ColourA3	Colour A3	CYCLE	Copies	ABS
<input checked="" type="checkbox"/>	MCONASSETS	MCONASSETS	RESET	Copies	ABS

Yield Config

Select...	MeterDefCode	Yield	YieldFactor	ServiceCode	ServiceDesc	PriceType
<input checked="" type="checkbox"/>	Mono	0.00	0.00			
<input type="checkbox"/>	Colour	0.00	0.00			
<input type="checkbox"/>	MonoA3	0.00	0.00			
<input type="checkbox"/>	ColourA3	0.00	0.00			

VIEW PART DEFINITION DEFAULTS

1. Expand this panel to view all the information.
2. The other 3 docking panels can be unpinned in order to view the ***Defaults*** panel fully.

Site Warehouse Defaults

3. This panel will be populated with a list of all the **site warehouses** that are linked to the part **category** selected in the part definition **Details** frame. These are the **warehouses**¹ and **bins**² available to receive this part definition from a supplier.
4. In this example, 3 site warehouses and bins are linked to this **A-class** part definition.
5. Only **1 primary** default warehouse and bin can be selected for each site. This will be the **default location** for this part as it is **GRN**'d into store.

Select	SiteDescription	WhseName	BinName	IsPrimarySiteWhse	AmendDate
<input checked="" type="checkbox"/>	Durban Main Warehouse	DBN-C1		Yes	06/10/2020
<input checked="" type="checkbox"/>	Durban George Whse	George_Bin		No	06/10/2020
<input checked="" type="checkbox"/>	Pretoria PTA Main Warehouse	PM-A1		No	06/10/2020
<input type="checkbox"/>	Durban Johns_Boot			No	01/01/1900
<input type="checkbox"/>	Durban OTC_Whse_DBN			No	01/01/1900
<input type="checkbox"/>	Durban Theo_J_BootWhse			No	01/01/1900
<input type="checkbox"/>	Durban ChrisH_Whse			No	01/01/1900
<input type="checkbox"/>	Durban NewBootStock			No	01/01/1900
<input type="checkbox"/>	Durban Test New Warehouse			No	01/01/1900
<input type="checkbox"/>	Durban Dispatch Warehouse			No	01/01/1900
<input type="checkbox"/>	Durban Another New Wareho...			No	01/01/1900
<input type="checkbox"/>	Durban Secondary Stock War...			No	01/01/1900
<input type="checkbox"/>	Durban BlancaD_Boot			No	01/01/1900
<input type="checkbox"/>	Durban MaryT_BootWhse			No	01/01/1900
<input type="checkbox"/>	Pretoria PTA Customer Assets			No	01/01/1900
<input type="checkbox"/>	Pretoria OTC_Whse_PTA			No	01/01/1900
<input type="checkbox"/>	Pretoria Mark_Boot			No	01/01/1900
<input type="checkbox"/>	Cape Town CPT Main			No	01/01/1900
<input type="checkbox"/>	Blomfontein test			No	01/01/1900

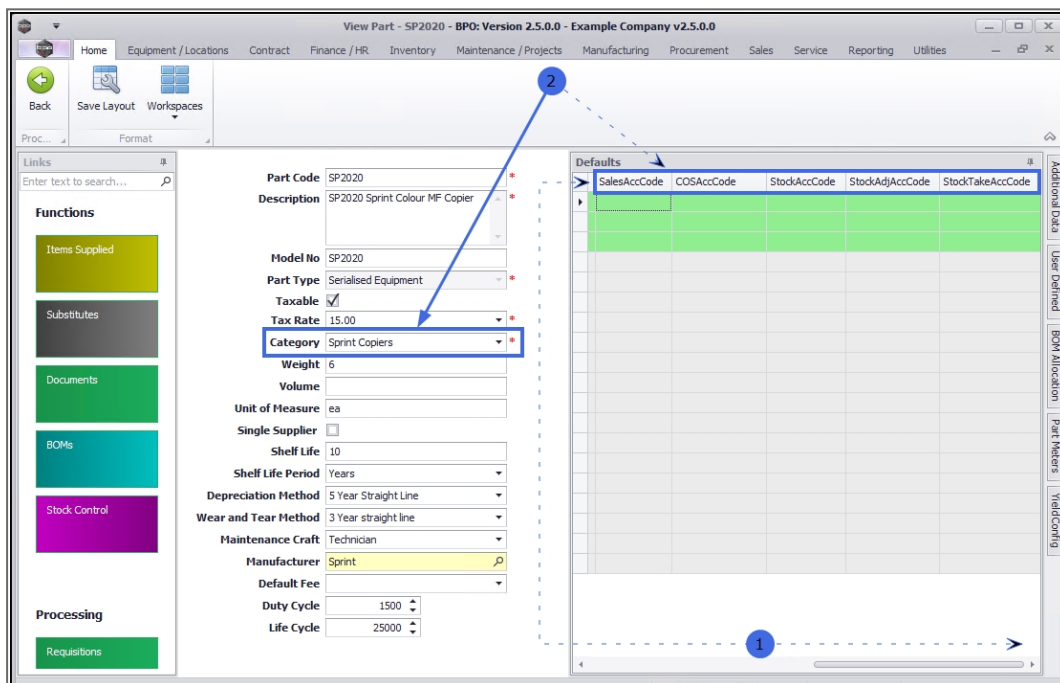
For more information, refer to [Add Part Definition Defaults](#).

¹A facility to store goods that will be sold or distributed later.

²The smallest available unit of space in a warehouse is called the storage bin. It describes the exact location within the warehouse where the goods are stored.

Account Code Defaults

1. Scroll right in the **Defaults** docking panel to view the default **account codes** columns for transaction postings:
2. These account codes are also populated based on the part definition **category** selected.
 - Sales
 - Cost of Sales
 - Stock
 - Stock Adjustment
 - Stock Take



VIEW PART DEFINITION BOM ALLOCATION

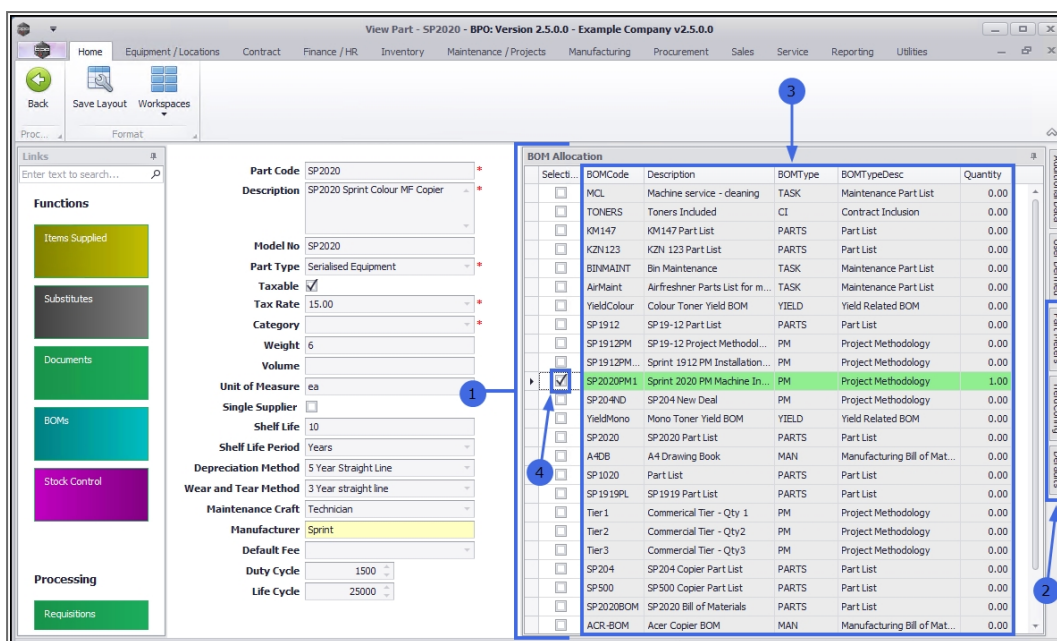
1. Expand this panel to view all the information.
2. The other 3 docking panels can be unpinned in order to view the **BOM Allocation** panel fully.

3. This panel lists all the Bill of Materials definitions which are available to be linked to the selected part definition.
4. In this example, **1** Project Methodology BOM is linked to the selected **A**-class part definition.

Note: More than one BOM can be linked to a part definition. A part definition can also exist without being linked to a BOM.

A **Bill of Materials** is a list of part definitions, with their quantities, used to define :

- a **Parent-child BOM**: Which parts and quantities are used to make up a product, e.g. the toners, rollers, drums and trays required in order to complete a certain machine.
- a **BOM Inclusion**: Which parts are included in a contract (and therefore not billed). e.g. a black toner is included in a monthly contract and should not be charged for separately, from the regular monthly contract fee.
- a **Task BOM**: Which parts are required to perform a task, e.g. a repair or overhaul of a machine.

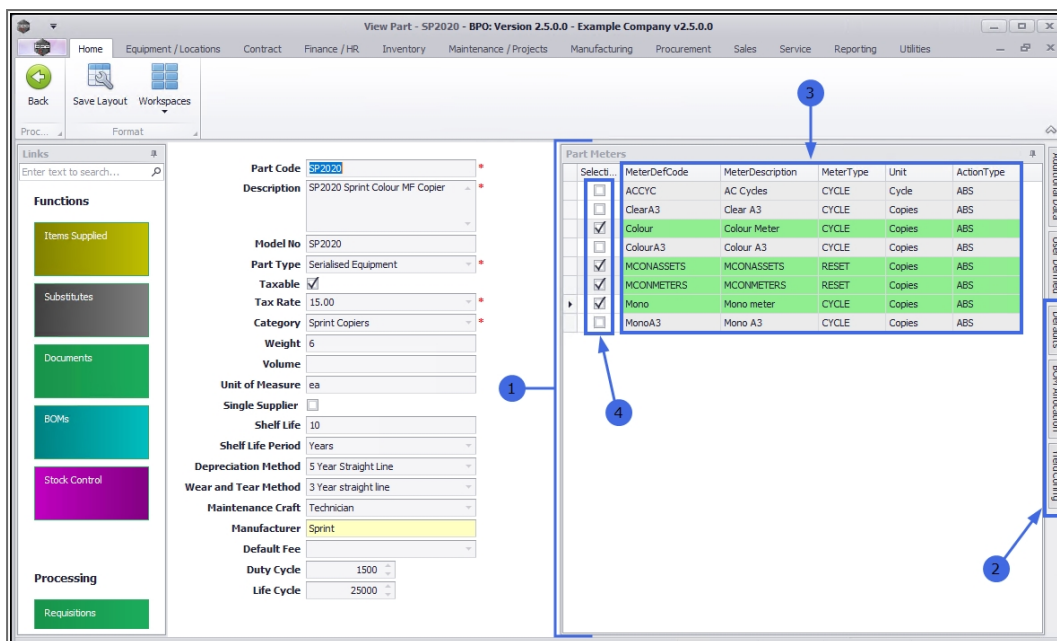


For more information, refer to .

VIEW PART DEFINITION PART METERS

1. Expand this panel to view all the information.
2. The other docking panels can be unpinned in order to view the **Part Meters** panel fully.
3. This panel lists all the **Part Meter** definitions which are available to be linked to the selected part definition.
4. In this example, **3** part meters are currently linked to the selected **A**-class part definition.

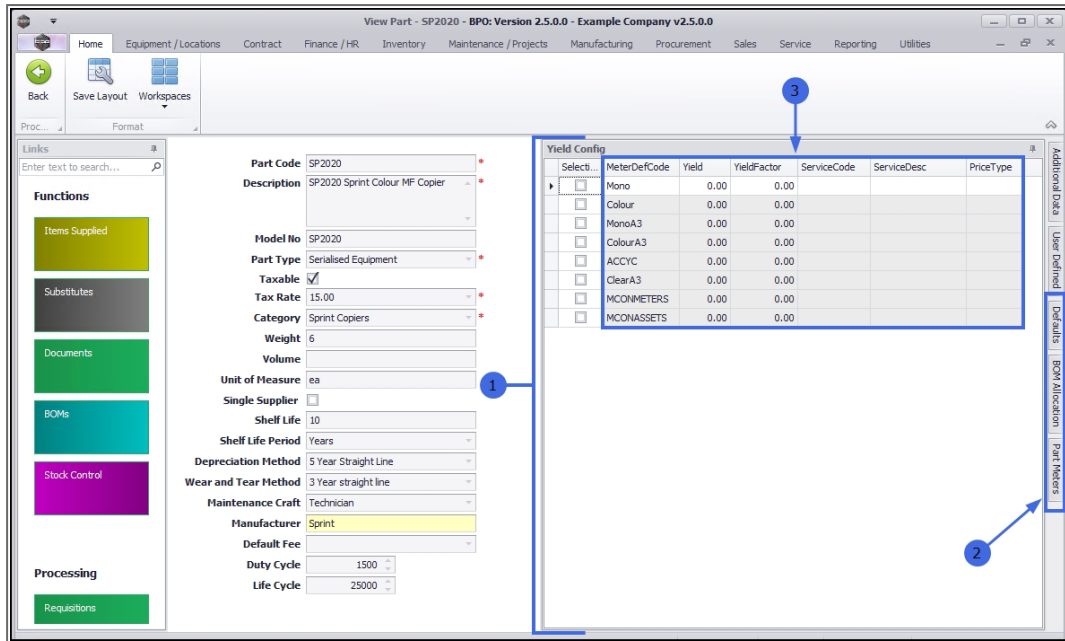
Note: By linking one or more **part meter** definitions to a serialised **A**-class item, the defined meters will be automatically linked when the item is **GRN**'d into store. For example, if you link **Mono** and **Colour** meters to this **A**-class part definition, when you receive(**GRN**) this part into store - these two meters will be automatically linked to this part definition.



For more information, refer to [Add Part Definition Part Meters](#).

VIEW PART DEFINITION YIELD CONFIG

1. Expand this panel to view all the information.
2. The other docking panels can be unpinned in order to view the **Part Meters** panel fully.
3. This panel lists all the [Yield Config](#) meter definitions which are available to be linked to the selected part definition.
4. This panel is valid for **C**-class part definitions, e.g. toners, paper.
5. Here you can record the total meter yield value and any service charge e.g. *Meter Yield Shortfall*, if required



View Part - SP2020 - BPO: Version 2.5.0.0 - Example Company v2.5.0.0

Part Code: SP2020
Description: SP2020 Sprint Colour MF Copier
Model No: SP2020
Part Type: Serialized Equipment
Taxable: ☒
Tax Rate: 15.00
Category: Sprint Copiers
Weight: 6
Volume:
Unit of Measure: ea
Single Supplier: ☐
Shelf Life: 10
Shelf Life Period: Years
Depreciation Method: 5 Year Straight Line
Wear and Tear Method: 3 Year straight line
Maintenance Craft: Technician
Manufacturer: Sprint
Default Fee:
Duty Cycle: 1500
Life Cycle: 25000

Select	MeterDefCode	Yield	YieldFactor	ServiceCode	ServiceDesc	PriceType
<input type="checkbox"/>	Mono	0.00	0.00			
<input type="checkbox"/>	Colour	0.00	0.00			
<input type="checkbox"/>	MonoA3	0.00	0.00			
<input type="checkbox"/>	ColourA3	0.00	0.00			
<input type="checkbox"/>	ACCYC	0.00	0.00			
<input type="checkbox"/>	ClearA3	0.00	0.00			
<input type="checkbox"/>	MCONMETERS	0.00	0.00			
<input type="checkbox"/>	MCONASSETS	0.00	0.00			

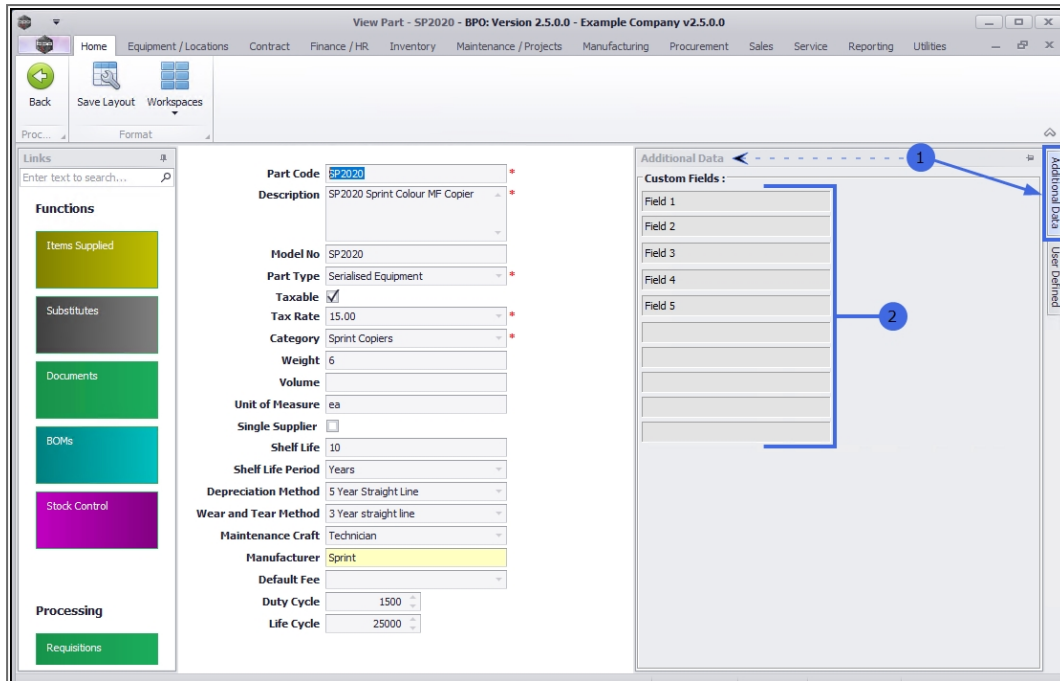
Additional Data: Defaults, BOM Allocation, Part Filters

For more information, refer to [Add Part Definition Yield Config](#).

VIEW ADDITIONAL DATA

1. The **Additional Data** panel is pinned by default to the edge of the screen. Click on the **tab** to expand the panel.
2. There are **10 Custom Fields** in this panel that can be utilised for **additional information** that you would like to log against the selected part.

Note: The Custom Field names can be changed according to your company's requirements.



For more information, refer to [Add Part Definition Additional Data](#).

VIEW USER DEFINED

1. The **User Defined** panel is pinned by default to the edge of the screen. Click on the **tab** to expand the panel.
2. The fields in this panel are to provide more information within the Inventory module so that associated work / processes can be carried out more efficiently.

View Part - SP2020 - BPO: Version 2.5.0.0 - Example Company v2.5.0.0

Home Equipment / Locations Contract Finance / HR Inventory Maintenance / Projects Manufacturing Procurement Sales Service Reporting Utilities

Back Save Layout Workspaces

Proc. Format

Links
Enter text to search...

Functions
Items Supplied
Substitutes
Documents
BOMs
Stock Control
Processing
Requisitions

Part Code: SP2020
Description: SP2020 Sprint Colour MF Copier
Model No: SP2020
Part Type: Serialised Equipment
Taxable: ☒
Tax Rate: 15.00
Category: Sprint Copiers
Weight: 6
Volume:
Unit of Measure: ea
Single Supplier: ☐
Shelf Life: 10
Shelf Life Period: Years
Depreciation Method: 5 Year Straight Line
Wear and Tear Method: 3 Year straight line
Maintenance Craft: Technician
Manufacturer: Sprint
Default Fee:
Duty Cycle: 1500
Life Cycle: 25000

User Defined
Drag a column header here to group by that column

fldExternalType	fldTableName	fldFieldName	fldInputType	fldCode	fldCodeDescription	fldCategory	fldRelatedType	fldVariable

Additional Data
User Defined

This Topic page is currently being updated, thank you for your patience.
Please check back soon.



UNDER CONSTRUCTION

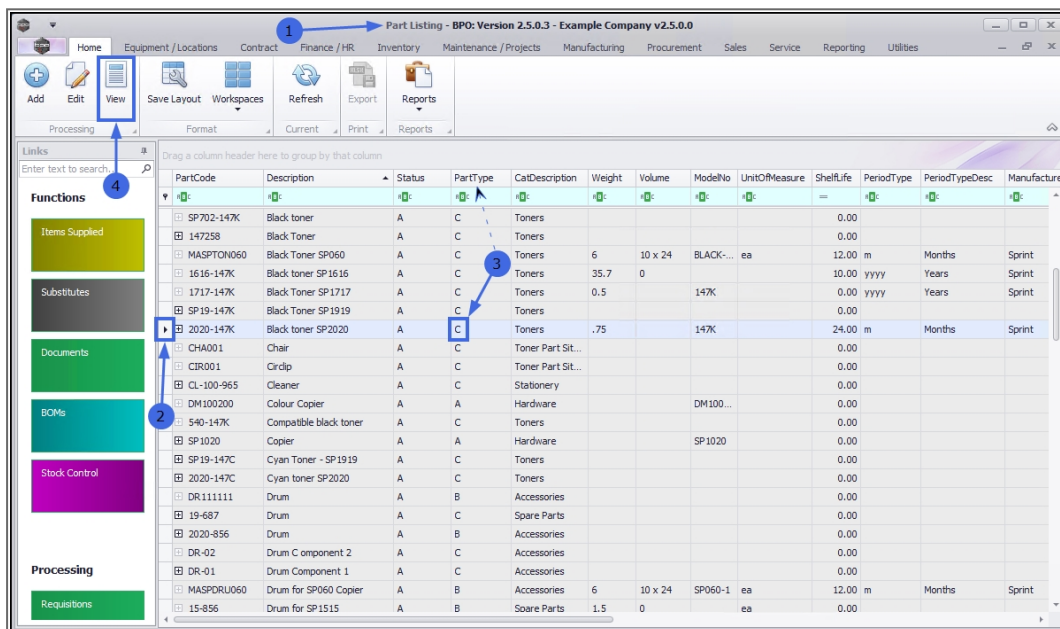
We are currently updating our site; thank you for your patience, please check back soon.



VIEW C-CLASS PART DEFINITION

C-class part definition details and information differ slightly from A or B-class part definitions. The images below highlight the differences.

1. In the **Part Listing** screen,
2. Select the **row** of the **C-class** part definition where you wish to view more information.
3. Check the **Part Type** column to ensure that you have selected a **C-class** part definition.
4. Click on **View**



PartCode	Description	Status	PartType	CatDescription	Weight	Volume	ModelNo	UnitOfMeasure	ShelfLife	PeriodType	PeriodTypeDesc	Manufacture
SP702-147K	Black toner	A	C	Toners					0.00			
147258	Black Toner	A	C	Toners					0.00			
MASPTON060	Black Toner SP060	A	C	Toners	6	10 x 24	BLACK...	ea	12.00	m	Months	Sprint
1616-147K	Black toner SP1616	A	C	Toners	35.7	0			10.00	yyyy	Years	Sprint
1717-147K	Black Toner SP1717	A	C	Toners	0.5		147K		0.00	yyyy	Years	Sprint
SP19-147K	Black Toner SP1919	A	C	Toners					0.00			
2020-147K	Black toner SP2020	A	C	Toners	.75		147K		24.00	m	Months	Sprint
CHA001	Chair	A	C	Toner Part Sit...					0.00			
CIR001	Circlip	A	C	Toner Part Sit...					0.00			
CL-100-965	Cleaner	A	C	Stationery					0.00			
DM100200	Colour Copier	A	A	Hardware			DM100...		0.00			
540-147K	Compatible black toner	A	C	Toners					0.00			
SP1020	Copier	A	A	Hardware			SP1020		0.00			
SP19-147C	Cyan Toner - SP1919	A	C	Toners					0.00			
2020-147C	Cyan toner SP2020	A	C	Toners					0.00			
DR111111	Drum	A	B	Accessories					0.00			
19-687	Drum	A	C	Spare Parts					0.00			
2020-856	Drum	A	B	Accessories					0.00			
DR-02	Drum Component 2	A	C	Accessories					0.00			
DR-01	Drum Component 1	A	C	Accessories					0.00			
MASPORU060	Drum for SP060 Copier	A	B	Accessories	6	10 x 24	SP060-1	ea	12.00	m	Months	Sprint
15-856	Drum for SP1515	A	B	Soare Parts	1.5	0		ea	0.00			

1. The **View Part** screen will open.
2. You will note that there is only a **Back** button on this screen. This is a view only screen and no changes can be made or saved.

VIEW PART DEFINITION DETAILS

3. On the left of the screen, are the part definition **details** fields which reflect the columns viewed in the previous **Part Listing** screen.

All of these fields except **Depreciation Method** are available for a **C-class** part definition.

4. As this is a **C-class** part definition, the **Part Type** is '*Non Serialised Parts*'.

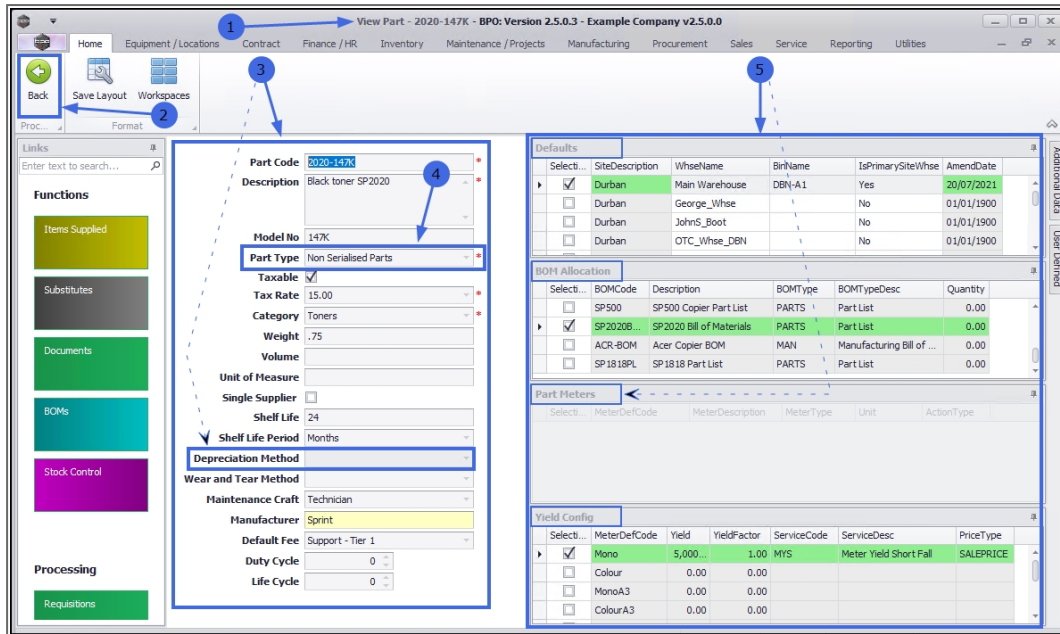
Note: For descriptions of these fields refer to [Add Part Definition Details](#).

VIEW PART DEFINITION INFORMATION PANELS

5. On the right of the screen, are the part definition information panels, these are docked by default but can be unpinned according to your requirements:

- **Defaults**
- **BOM Allocation**
- **Part Meters***
- **Yield Config**

* The **Part Meters** panel is not available for **C-class** part definitions as these part types do not have meters linked to them.



View Part - 2020-147K - BPO: Version 2.5.0.3 - Example Company v2.5.0.0

Home Equipment / Locations Contract Finance / HR Inventory Maintenance / Projects Manufacturing Procurement Sales Service Reporting Utilities

Back Save Layout Workspaces Proc... Format

Links Enter text to search...

Functions

- Items Supplied
- Substitutes
- Documents
- BOMs
- Stock Control

Processing

- Regulations

Part Code: 2020-147K

Description: Black toner SP2020

Model No: 147K

Part Type: Non Serialised Parts

Taxable: ☒

Tax Rate: 15.00

Category: Toners

Weight: .75

Volume:

Unit of Measure:

Single Supplier: ☐

Shelf Life: 24

Shelf Life Period: Months

Depreciation Method:

Wear and Tear Method:

Maintenance Craft: Technician

Manufacturer: Sprint

Default Fee: Support - Tier 1

Duty Cycle: 0

Life Cycle: 0

Defaults

Select...	SiteDescription	WhseName	BinName	IsPrimarySiteWhse	AmendDate
<input checked="" type="checkbox"/>	Durban	Main Warehouse	DBN-A1	Yes	20/07/2021
<input type="checkbox"/>	Durban	George_Wfse		No	01/01/1900
<input type="checkbox"/>	Durban	JohnS_Boot		No	01/01/1900
<input type="checkbox"/>	Durban	OTC_Whse_DBN		No	01/01/1900

BOM Allocation

Select...	BOMCode	Description	BOMType	BOMTypeDesc	Quantity
<input type="checkbox"/>	SP500	SP500 Copier Part List	PARTS	Part List	0.00
<input checked="" type="checkbox"/>	SP2020B	SP2020 Bill of Materials	PARTS	Part List	0.00
<input type="checkbox"/>	ACR-BOM	Acer Copier BOM	MAN	Manufacturing Bill of ...	0.00
<input type="checkbox"/>	SP1818PL	SP1818 Part List	PARTS	Part List	0.00

Part Meters

Select...	MeterDefCode	MeterDescription	MeterType	Unit	ActionType
<input checked="" type="checkbox"/>	Mono				
<input type="checkbox"/>	Colour				
<input type="checkbox"/>	MonoA3				
<input type="checkbox"/>	ColourA3				

Yield Config

Select...	MeterDefCode	Yield	YieldFactor	ServiceCode	ServiceDesc	PriceType
<input checked="" type="checkbox"/>	Mono	5,000...	1.00	MYS	Meter Yield Short Fall	SALEPRICE
<input type="checkbox"/>	Colour	0.00	0.00			
<input type="checkbox"/>	MonoA3	0.00	0.00			
<input type="checkbox"/>	ColourA3	0.00	0.00			

For any other information regarding the **View Part** screen (i.e. the Information panels), refer to the **View A or B-class** 'View Part Definition' sub topics above.

MNU.026.025