

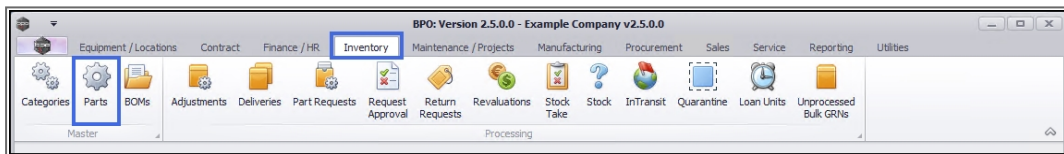
## INVENTORY

### PARTS – ADD PART DEFINITION YIELD CONFIG

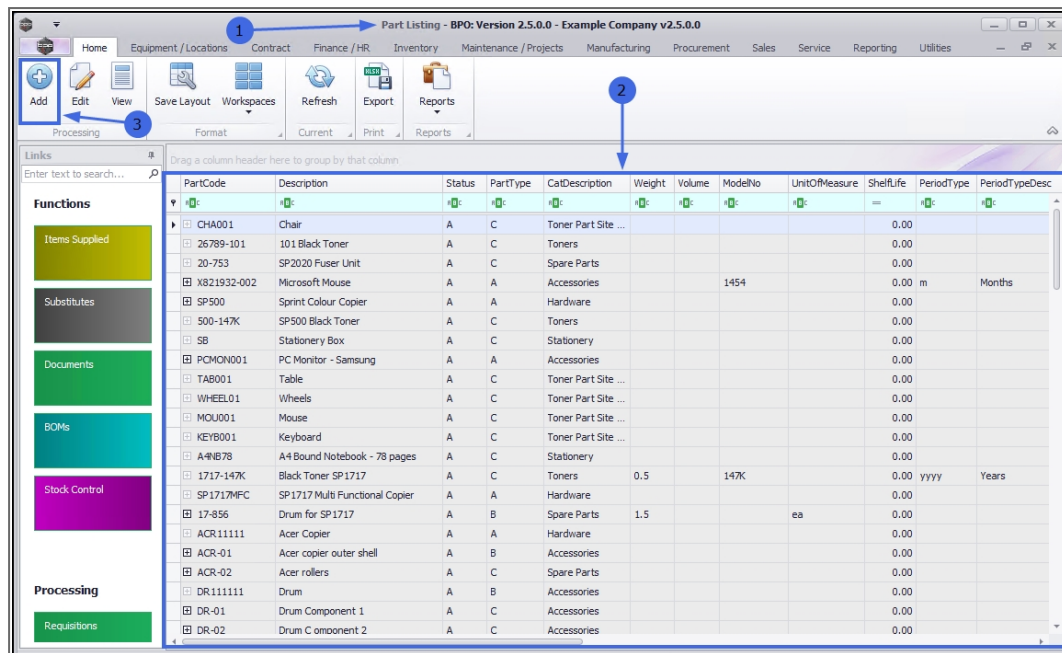
The **Part Yield** panel in the 'Add new Part' screen is valid for **C**-class part definitions, for example. toners, paper, network cables.

Here you can record the total meter yield value and any service charge, e.g. *Meter Yield Shortfall*, if required.

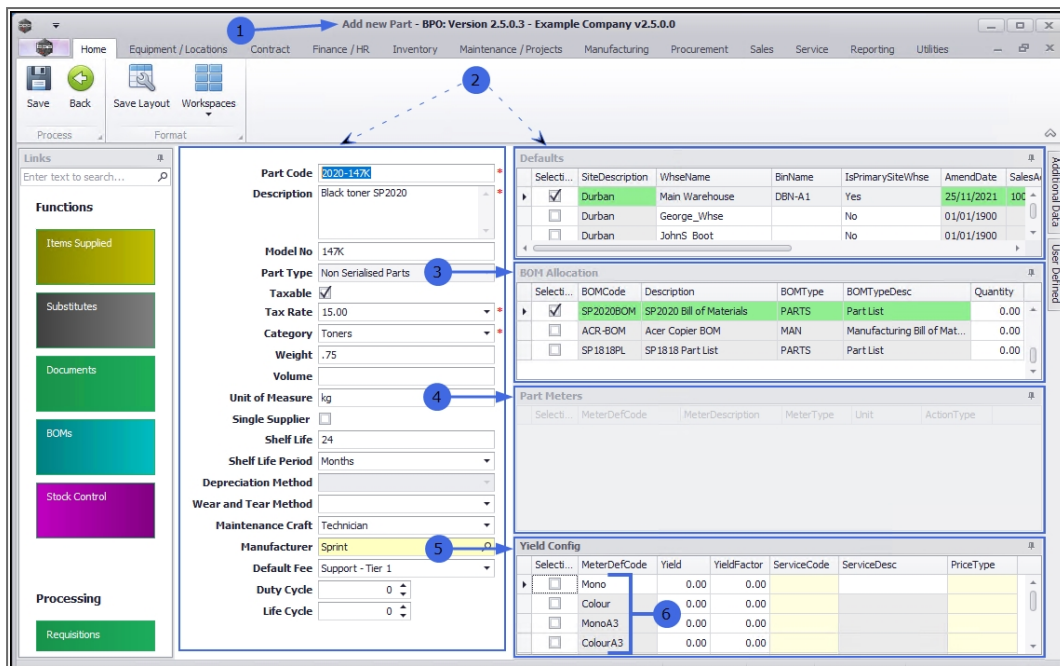
**Ribbon Access:** *Inventory > Parts*



1. The **Part Listing** screen will display.
2. The data grid will display a list of all the part definitions currently on the system.
3. Click on **Add**.



1. The **Add new part** screen will open.
2. Follow the process to add the part definition [details](#) and [defaults](#).
3. Follow the process to add part definition [BOM Allocations](#), if required.
4. Follow the process to add part definition [Part Meters](#), if required. (Only **A** or **B**-class parts can have meters set up on them. The Part Meters panel is greyed out (inactive) in this example as it does not apply to **C**-class parts )
5. Move further down the right hand side of the **Add new Part** screen to the **Yield Config** panel.
6. This panel will list all the available toner yield monitors that can be linked to the **C**-class part definition.



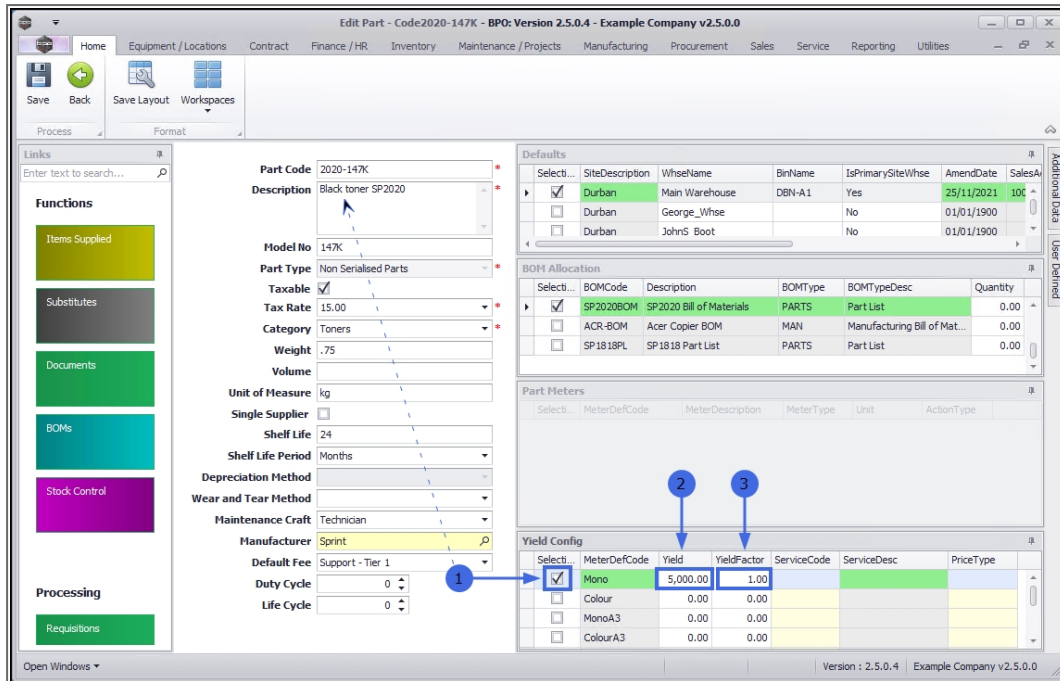
1. In the **Selection** column, select the check box in front of the **Meter Definition Code** that you wish to link to this part definition.

**Note:** The selection will be linked to the **Part Description** recorded in the part definition details. If this is a **Black Toner** for example, then a **Mono meter**<sup>1</sup> will be linked in this panel.

Fill in the following information:

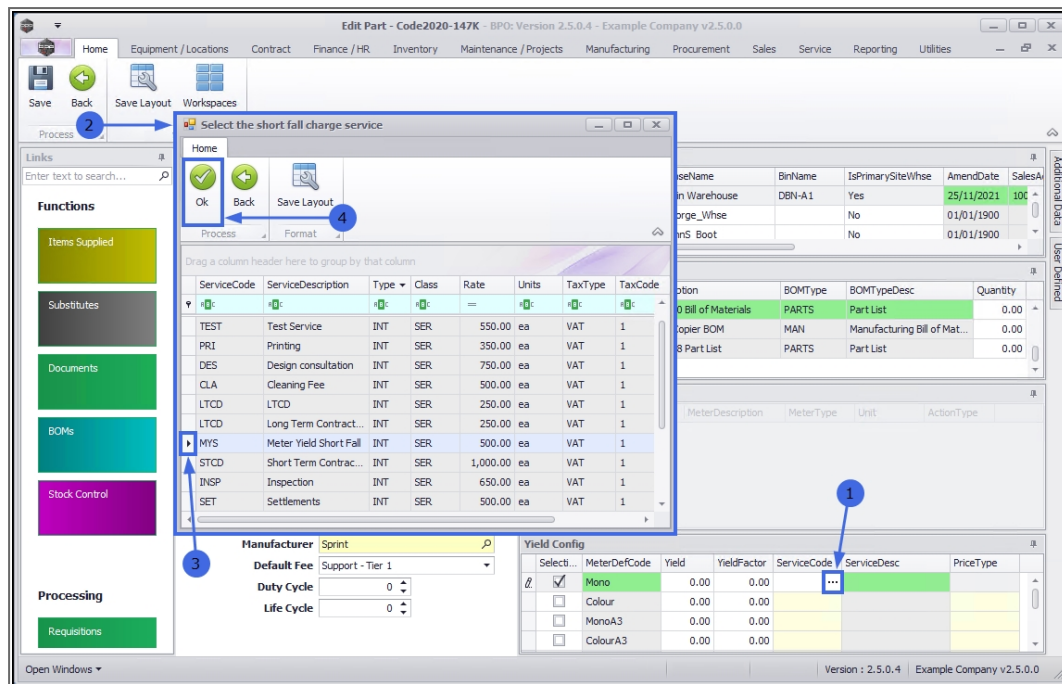
2. **Yield:** Click in this field and either type in or use the arrow indicators to enter the yield in meter units. This is how many prints can be generated. For example, if **5000** is entered, that would indicate that this toner will yield (print) 5000 copies.
3. **Yield Factor:** The factor should be set to **1**. This is calculated on the basis that **1** toner will yield (print) 5000 copies.

<sup>1</sup>Mono is short for monochrome. A Mono meter prints solely in black.



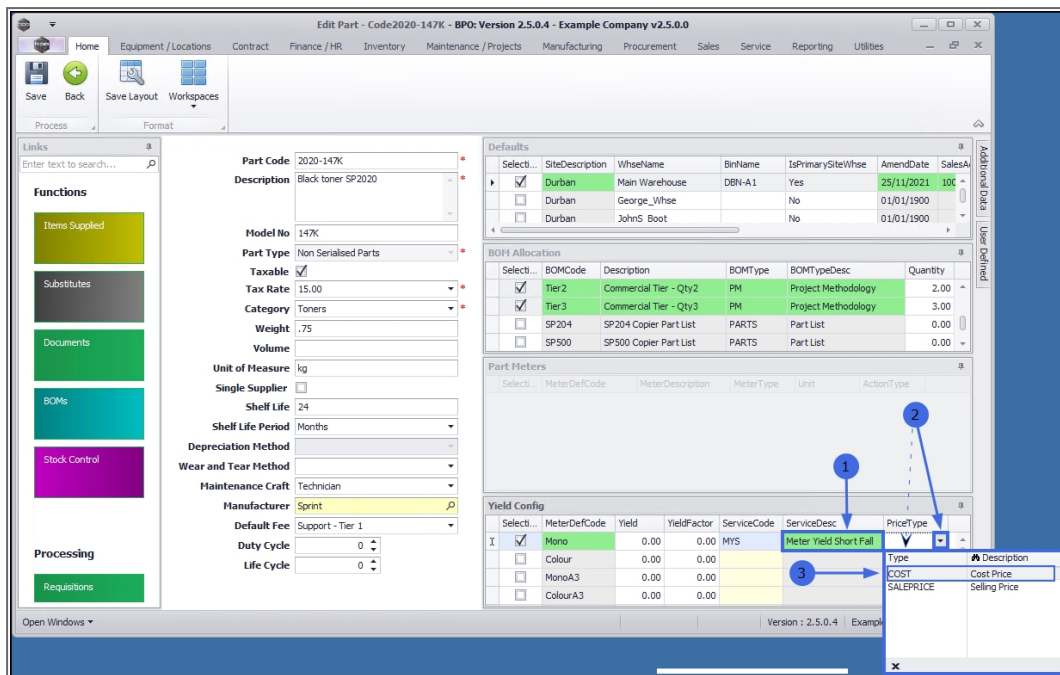
1. **Service Code:** Click in this text box to reveal an ellipsis button.
2. Click on this button to display the *Select the short fall charge service* pop up screen.
3. Select the **row** of the short fall charge service that should be used for Short Yield Instant Billing.
  - In this image, [MYS - Meter Yield Short Fall] has been selected.
4. Click on **Ok**.

**Note:** These Service Codes are set up in Ribbon Access: **Sales > Services > Add** (new service).



1. **Service Description:** This will now be populated with the selected short fall charge service long description. (This will be seen by the customer on their invoice.)
2. **Price Type:** Click on the drop-down arrow to reveal the Price Type list.
3. Click on the list item you wish to add to this meter definition. In this example **Cost Price** is selected.

**Note:** Price Type defines whether the Short Yield Instant Billing is based on the **Cost Price** or the **Selling Price** of the .



When you have finished assigning the meter yield details to this inventory definition, click on **Save**.

[Image]

The meter yield details will be saved and you will return to the **Part Listing** screen.

[Image]

This Topic page is currently being updated, thank you for your patience. Please check back soon.



## UNDER CONSTRUCTION

We are currently updating our site; thank you  
for your patience, please check back soon.



### Related Topics

- [Add Part Definition Details](#)
- [Add Part Definition Defaults](#)
- [Add Part Definition BOM Allocation](#)
- [Add Part Definition Part Meters](#)
- [Add Part Definition Additional Data](#)
- [Add Part Definition User Defined](#)

MNU.026.034

