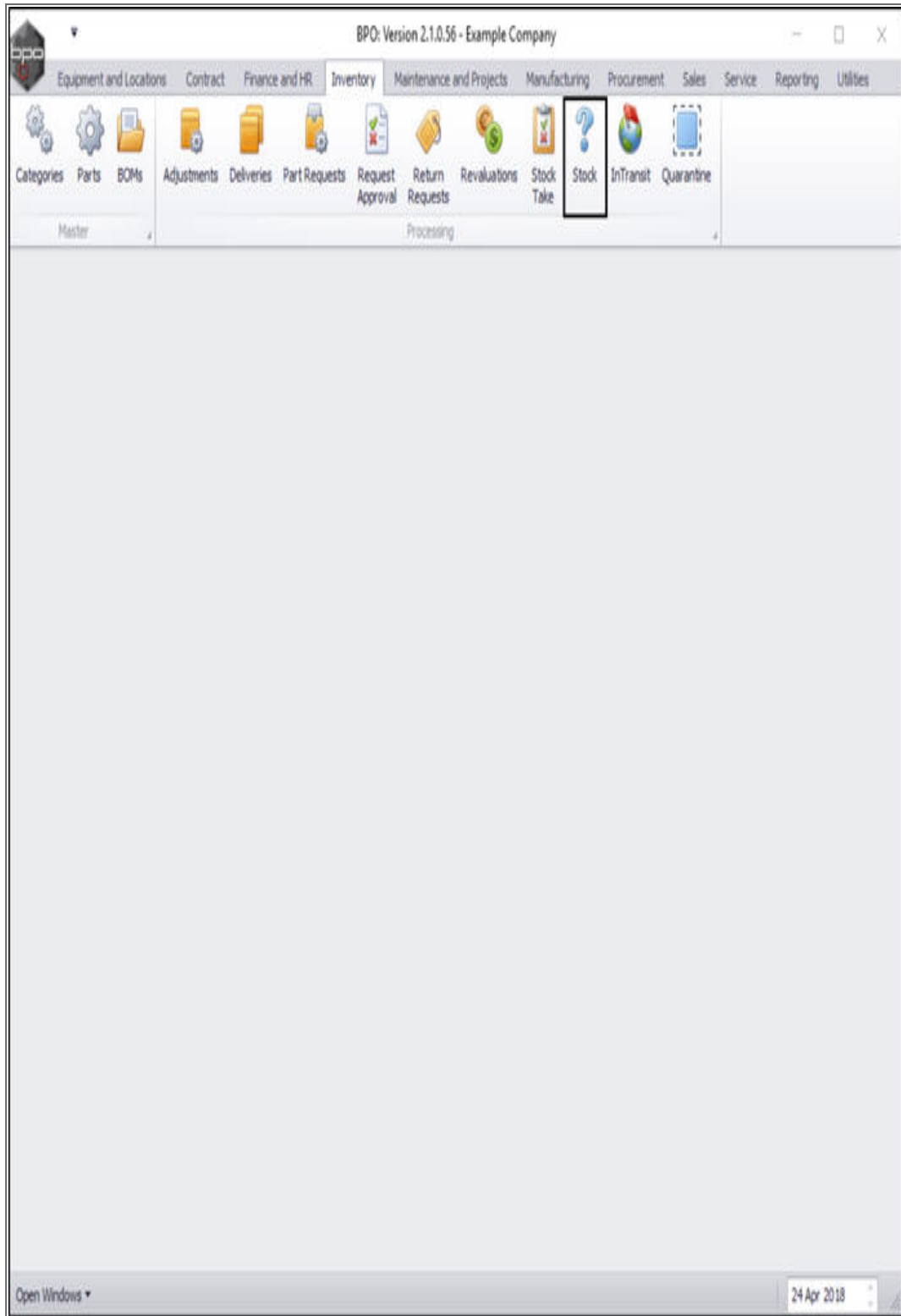


INVENTORY

VIEW ALL STOCK

...

Ribbon Access: *Inventory > Stock*



The ***Stock Status*** screen will be displayed.

Select the Site and Status

- Select the **site** .
 - In this image **Durban** has been selected.

CO3 Technologies (Pty) Ltd © Company Confidential

- This screen should default to the ***In Stock Only*** status.
- Ensure that you change this to the ***All Parts*** status.



SELECT THE WAREHOUSE

- Click on the drop-down arrow in the **Warehouse** field to display the **Warehouse Selection** menu.
- Click on the **warehouse** that you wish to view.
 - In this image, the **Cari Warehouse** is selected.



VIEW CURRENT STOCK

- The screen will now display a list of all the **A-Class**, **B-Class** and **C-Class** items that have been loaded onto the system, whether there is currently stock of these items or not
- View the ***Current Stock*** column to see the in stock amounts of each item.

Stock Status - BPO: Version 2.1.0.56 - Example Company

Home Equipment and Locations Contract Finance and HR Inventory Maintenance and Projects Manufacturing Procurement Sales Service Reporting Utilities

Requestion Stock Transfer Stock Adjust Inter Warehouse Request Save Layout Workspaces Durban All Parts Refresh Export

Process Format Current Print

Selected Warehouse:

Warehouse: Cari Warehouse

Drag a column header here to group by that column

PartType	PartTypeDesc	PartCode	PartName	ModelNo	CategoryDesc	Category	WarehouseName	CurrentStock	ReservedStock	RequisitionedStock
A	Serialised Equipment	SP19-123456	SP19-12 Colour Copier	SP19-12	Hardware	MAMGR	Cari Warehouse	0.00	0.00	0.0
C	Non Serialised Parts	12-098765	SP19-12 Black Toner		Toners	TOMNGR	Cari Warehouse	3.00	0.00	0.0
C	Non Serialised Parts	2020-147L	SP2020 Clear Toner		Toners	TOMNGR	Cari Warehouse	0.00	0.00	0.0
C	Non Serialised Parts	102-7854	Network cable		Spare Parts	SPMNGR	Cari Warehouse	0.00	0.00	0.0
A	Serialised Equipment	SP204	SP204 Colour Copier	SP204	Hardware	MAMGR	Cari Warehouse	0.00	0.00	0.0
A	Serialised Equipment	204-147K	SP204 Black Toner		Toners	TOMNGR	Cari Warehouse	0.00	0.00	0.0
C	Non Serialised Parts	204-147C	SP204 Cyan Toner		Toners	TOMNGR	Cari Warehouse	0.00	1.00	0.0
C	Non Serialised Parts	204-147Y	SP204 Yellow Toner		Toners	TOMNGR	Cari Warehouse	0.00	0.00	0.0
C	Non Serialised Parts	204-147M	SP204 Magenta Toner		Toners	TOMNGR	Cari Warehouse	0.00	0.00	0.0
C	Non Serialised Parts	147258	Black Toner		Toners	TOMNGR	Cari Warehouse	0.00	0.00	0.0
C	Non Serialised Parts	19-687	Drum		Spare Parts	SPMNGR	Cari Warehouse	0.00	0.00	0.0
A	Serialised Equipment	TMACH	Test Machine		Hardware	MAMGR	Cari Warehouse	0.00	0.00	0.0
A	Serialised Equipment	NMACH	New Machine		Hardware	MAMGR	Cari Warehouse	0.00	0.00	0.0
C	Non Serialised Parts	NPT	New part test		Toners	TOMNGR	Cari Warehouse	0.00	0.00	0.0
C	Non Serialised Parts	CONV001	ACDC Convertor		Toners	TOMNGR	Cari Warehouse	0.00	0.00	0.0
C	Non Serialised Parts	ADAP001	Adaptor		Toners	TOMNGR	Cari Warehouse	0.00	0.00	0.0
C	Non Serialised Parts	New1	New part 1		Toners	TOMNGR	Cari Warehouse	0.00	0.00	0.0
C	Non Serialised Parts	DRIVE01	Hard Drive		Toner Part Sit...	TOMNGR	Cari Warehouse	0.00	0.00	0.0
C	Non Serialised Parts	TOOL01	Tools		Toner Part Sit...	TOMNGR	Cari Warehouse	0.00	0.00	0.0
C	Non Serialised Parts	WHEEL01	Wheels		Toner Part Sit...	TOMNGR	Cari Warehouse	0.00	0.00	0.0
C	Non Serialised Parts	LAD02	ladder		Toner Part Sit...	TOMNGR	Cari Warehouse	0.00	0.00	0.0
C	Non Serialised Parts	CIR001	Circlip		Toner Part Sit...	TOMNGR	Cari Warehouse	0.00	0.00	0.0

Open Windows 24 Apr 2018

VIEW STOCK QUANTITY AND LOCATION

- Click on any **'bold'** expand button in a item line to view the **quantity** and **location** of the stock.

Stock Status - BPO: Version 2.1.0.66 - Example Company

Home Equipment and Locations Contract Finance and HR Inventory Maintenance and Projects Manufacturing Procurement Sales Service Reporting Utilities

Requestion Stock Transfer Stock Adjust Inter Warehouse Request Save Layout Workspaces Durban All Parts Refresh Export

Selected Warehouse : Warehouse Cari Warehouse

Drag a column header here to group by that column

PartType	PartTypeDesc	PartCode	PartName	ModelNo	CategoryDesc	Category	WarehouseName	CurrentStock	ReservedStock	RequisitionedStock	StockOnOrder	NetStock	Reord
A	Serialized Equipment	SP2020	SP2020 Sprint Colo...	SP2020	Hardware	MAMNGR	Cari Warehouse	0.00	1.00	0.00	0.00	-1.00	
C	Non Serialized Parts	2020-147K	Black toner SP2020		Toners	TOMNGR	Cari Warehouse	3.00	0.00	0.00	0.00	3.00	
A	Serialized Equipment	SP1919	SP1919 Sprint Colo...	1919	Hardware	MAMNGR	Cari Warehouse	0.00	1.00	0.00	0.00	-1.00	
C	Non Serialized Parts	SP19-147K	Black Toner SP1919		Toners	TOMNGR	Cari Warehouse	0.00	0.00	0.00	0.00	0.00	
C	Non Serialized Parts	SP19-147C	Cyan Toner - SP1919		Toners	TOMNGR	Cari Warehouse	8.00	3.00	0.00	0.00	5.00	
C	Non Serialized Parts	SP19-147Y	Yellow Toner - SP1...		Toners	TOMNGR	Cari Warehouse	0.00	0.00	0.00	0.00	0.00	
C	Non Serialized Parts	SP19-147M	Magenta toner - SP...		Toners	TOMNGR	Cari Warehouse	0.00	0.00	0.00	0.00	0.00	
C	Non Serialized Parts	2020-147M	Magenta toner SP2...		Toners	TOMNGR	Cari Warehouse	0.00	0.00	0.00	0.00	0.00	
C	Non Serialized Parts	2020-147C	Cyan toner SP2020		Toners	TOMNGR	Cari Warehouse	0.00	0.00	0.00	0.00	0.00	
C	Non Serialized Parts	2020-147Y	Yellow toner SP2020		Toners	TOMNGR	Cari Warehouse	0.00	0.00	0.00	0.00	0.00	
C	Non Serialized Parts	CL-100-965	Cleaner		Stationery	STCOOT	Cari Warehouse	6.00	0.00	0.00	0.00	6.00	
A	Serialized Equipment	SP1818	Sprint copier		Hardware	MAMNGR	Cari Warehouse	0.00	0.00	0.00	0.00	0.00	
A	Serialized Equipment	1458-96523	K147 Kyocera Colo...	K147	Kyocera Mul...	MAKYMFC	Cari Warehouse	0.00	1.00	0.00	0.00	-1.00	
C	Non Serialized Parts	147-888544	K147 Black toner		Toners	TOMNGR	Cari Warehouse	0.00	0.00	0.00	0.00	0.00	
A	Serialized Equipment	K2N-122TFB	Kruger ZN Fax Mac...	ZN122	Hardware	MAMNGR	Cari Warehouse	0.00	0.00	0.00	0.00	0.00	
C	Non Serialized Parts	12345ZN	ZN Paper		Stationery	STCOOT	Cari Warehouse	0.00	2.00	0.00	0.00	-2.00	
C	Non Serialized Parts	147-888741	K147 Yellow Toner		Toners	TOMNGR	Cari Warehouse	0.00	0.00	0.00	0.00	0.00	
C	Non Serialized Parts	K147-888123	K147 Magenta Toner		Toners	TOMNGR	Cari Warehouse	0.00	0.00	0.00	0.00	0.00	
C	Non Serialized Parts	K147-888478	K147 Cyan Toner		Toners	TOMNGR	Cari Warehouse	0.00	0.00	0.00	0.00	0.00	
A	Serialized Equipment	KM250MFP	Konica Minolta Colo...		Hardware	MAMNGR	Cari Warehouse	0.00	0.00	0.00	0.00	0.00	
C	Non Serialized Parts	9855632	Air Freshner		Stationery	STCOOT	Cari Warehouse	0.00	0.00	0.00	0.00	0.00	
A	Serialized Equipment	SP19-123456	SP19-12 Colour Co...	SP19-12	Hardware	MAMNGR	Cari Warehouse	0.00	0.00	0.00	0.00	0.00	
C	Non Serialized Parts	12-098765	SP19-12 Black Toner		Toners	TOMNGR	Cari Warehouse	3.00	1.00	0.00	0.00	2.00	
C	Non Serialized Parts	2020-147L	SP2020 Clear Toner		Toners	TOMNGR	Cari Warehouse	0.00	0.00	0.00	0.00	0.00	
C	Non Serialized Parts	102-7854	Network cable		Spare Parts	SPMNGR	Cari Warehouse	0.00	0.00	0.00	0.00	0.00	

Open Windows 01 Nov 2018

- The **Stock** frame will be expanded and you can see which **bin** the item can be found in and the **quantity** of those items in the that bin. If there is a **serial number** (A or B-Class items) or **batch number(s)** linked to the item(s) (C-Class items if batch tracking is enabled) then these numbers can also be found in this frame.

