

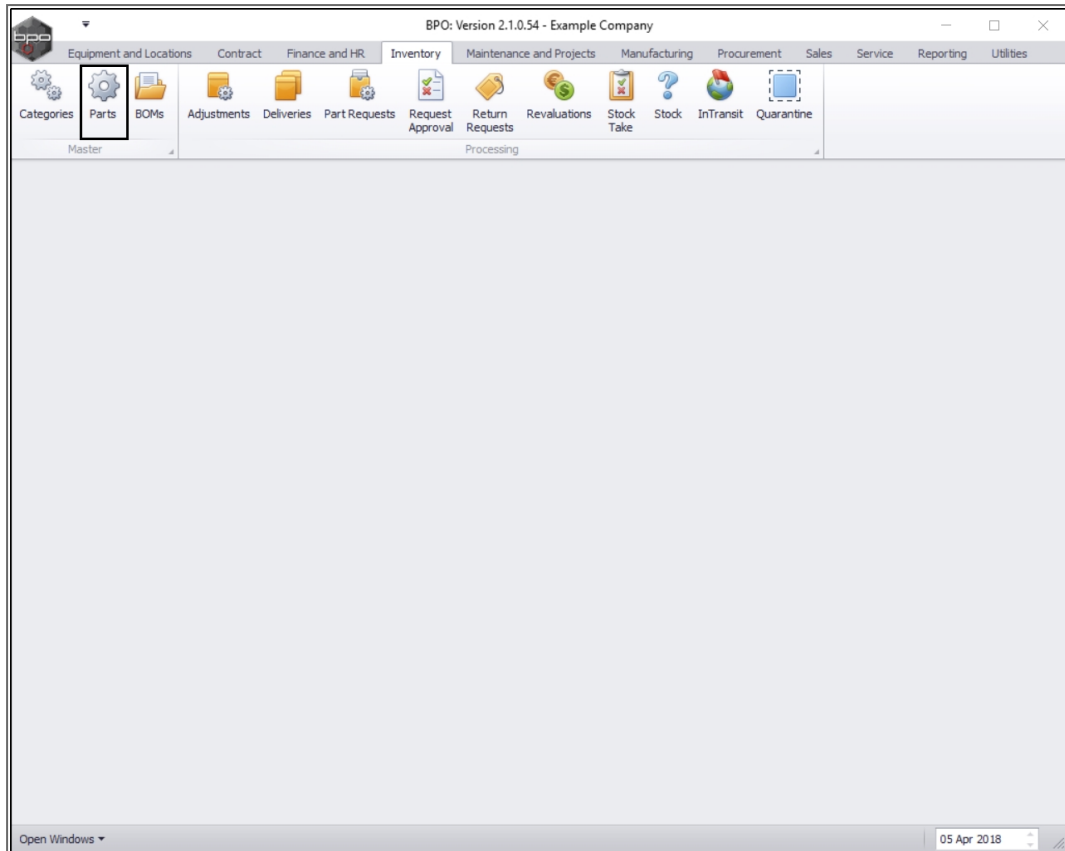
MANUFACTURING/INVENTORY

MANUFACTURING PRODUCTION PARTS DEFINITIONS SETUP

Before a part can be manufactured using the BPO **Manufacturing** module, [Inventory definitions need to be set up](#) for the Part that will be produced, and the parts required for the production process. These are set up in the BPO **Inventory** module.

A-Class, **B**-Class and **C**-class products can be produced (ensure you enter the serial number for **A**-Class items during the production run).

Ribbon Access: *Inventory > Parts*



The ***Part Listing*** screen will be displayed.

PRODUCTION PART DEFINITION

- Follow the [Inventory Definition Setup](#) manual to create the part definition.
- In this example an ***Architects Drawing book*** has been created as the ***production part***.

Part Listing - BPO: Version 2.1.0.55 - Example Company

Home Equipment and Locations Contract Finance and HR Inventory Maintenance and Projects Manufacturing Procurement Sales Service Reporting Utilities

Add Edit Delete View Save Layout Workspaces Refresh Export Reports

Processing Format Current Print Reports

Links Enter text to search...

Documents

BOMs

Stock Control

Processing

Requisitions

Purchase Orders

Requests

Transactions

Drag a column header here to group by that column

PartCode	Description	Status	PartType	CatDescription	Weight	Volume	ModelNo	UnitOfMeasure	ShelfLife	PeriodType	PeriodTypeDesc
26789-101	101 Black Toner	A	C	Toners					0.00		
A4ADB01	A4 Architects Drawing Book	A	C	Accessories			0101	ea	5.00	yyyy	Years
A4CB	A4 Cardboard Backing	A	C	Stationery				ea	5.00	yyyy	Years
A4CS	A4 Clear Plastic Cover	A	C	Stationery				ea	5.00	yyyy	Years
A4DB	A4 Drawing Book	A	C	Stationery				ea	5.00	yyyy	Years
A4NP	A4 Note Paper	A	C	Stationery				ea	5.00	yyyy	Years
AZ4SNB78	A4 Spiral Bound Notebook	A	C	Stationery			334401	ea	5.00	yyyy	Years
1212	ABPart	A	C	Spare Parts					0.00	m	Months
CONV001	ACDC Converter	A	C	Toners					0.00		
ACR11111	Acer Copier	A	A	Hardware					0.00		
ACR-01	Acer copier outer shell	A	B	Accessories					0.00		
ACR-02	Acer rollers	A	C	Spare Parts					0.00		
ADAP001	Adaptor	A	C	Toners					0.00		
9855632	Air Freshner	A	C	Stationery					0.00		
AT500	AT500 Copier	A	A	Hardware			AT500		0.00		
147258	Black Toner	A	C	Toners					0.00		
1616-147K	Black toner SP1616	A	C	Toners	35.7	0			10.00	yyyy	Years
1717-147K	Black Toner SP1717	A	C	Toners	0.5		147K		0.00	yyyy	Years
SP19-147K	Black Toner SP1919	A	C	Toners					0.00		
2020-147K	Black toner SP2020	A	C	Toners	0.500			kg	24.00	m	Months
CHA001	Chair	A	C	Toner Part Si...					0.00		
CIR001	Circlip	A	C	Toner Part Si...					0.00		
CL-100-965	Cleaner	A	C	Stationery					0.00		
540-147K	Compatible black toner	A	C	Toners					0.00		
SP1020	Copier	A	A	Hardware			SP1020		0.00		

Open Windows 11 Apr 2018

PARTS (MATERIALS) REQUIRED DEFINITIONS

- Follow the [Inventory Definition Setup](#) manual to create the **BOM allocation** details for this part (the sum of materials which make up the part).
- In this example, the following parts (or materials) are required to make up the production part above.
 - A4 Note Paper,**
 - A4 Plastic Cover,**
 - A4 Cardboard Backing and**
 - 50 sheets of paper -**
- All 4 part definitions have been created.

Part Listing - BPO: Version 2.1.0.55 - Example Company

Home Equipment and Locations Contract Finance and HR Inventory Maintenance and Projects Manufacturing Procurement Sales Service Reporting Utilities

Add Edit Delete View Save Layout Workspaces Refresh Export Reports

Processing Format Current Print Reports

Links

Enter text to search...

Documents

BOMs

Stock Control

Processing

Requisitions

Purchase Orders

Requests

Transactions

Drag a column header here to group by that column

PartCode	Description	Status	PartType	CatDescription	Weight	Volume	ModelNo	UnitOfMeasure	ShelfLife	PeriodType	PeriodTypeDesc
SP 1020	Copier	A	A	Hardware			SP1020		0.00		
540-147K	Compatible black toner	A	C	Toners					0.00		
CL-100-965	Cleaner	A	C	Stationery					0.00		
CIR001	Circlip	A	C	Toner Part Si...					0.00		
CHA001	Chair	A	C	Toner Part Si...					0.00		
2020-147K	Black toner SP2020	A	C	Toners	0.500			kg	24.00	m	Months
SP 19-147K	Black Toner SP1919	A	C	Toners					0.00		
1717-147K	Black Toner SP1717	A	C	Toners	0.5		147K		0.00	yyyy	Years
1616-147K	Black toner SP1616	A	C	Toners	35.7	0			10.00	yyyy	Years
147258	Black Toner	A	C	Toners					0.00		
AT500	AT500 Copier	A	A	Hardware			AT500		0.00		
9855632	Air Freshner	A	C	Stationery					0.00		
ADAP001	Adaptor	A	C	Toners					0.00		
ACR-02	Acer rollers	A	C	Spare Parts					0.00		
ACR-01	Acer copier outer shell	A	B	Accessories					0.00		
ACR111111	Acer Copier	A	A	Hardware					0.00		
CONV001	ACDC Converter	A	C	Toners					0.00		
1212	ABPart	A	C	Spare Parts					0.00	m	Months
AZ-45NB78	A4 Spiral Bound Notebook	A	C	Stationery			334401	ea	5.00	yyyy	Years
A4NP	A4 Note Paper	A	C	Stationery				ea	5.00	yyyy	Years
A4DB	A4 Drawing Book	A	C	Stationery				ea	5.00	yyyy	Years
A4CS	A4 Clear Plastic Cover	A	C	Stationery				ea	5.00	yyyy	Years
A4CB	A4 Cardboard Backing	A	C	Stationery				ea	5.00	yyyy	Years
A4ADB01	A4 Architects Drawing Book	A	C	Accessories			0101	ea	5.00	yyyy	Years
26789-101	101 Black Toner	A	C	Toners					0.00		

Open Windows

11 Apr 2018

MNU.051.001