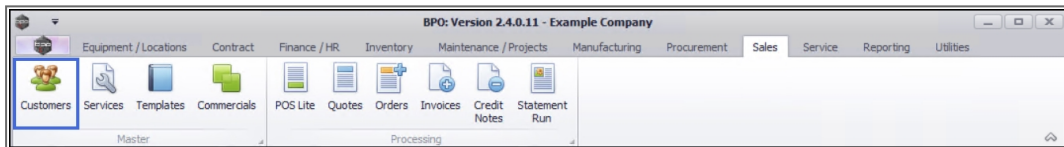


SALES

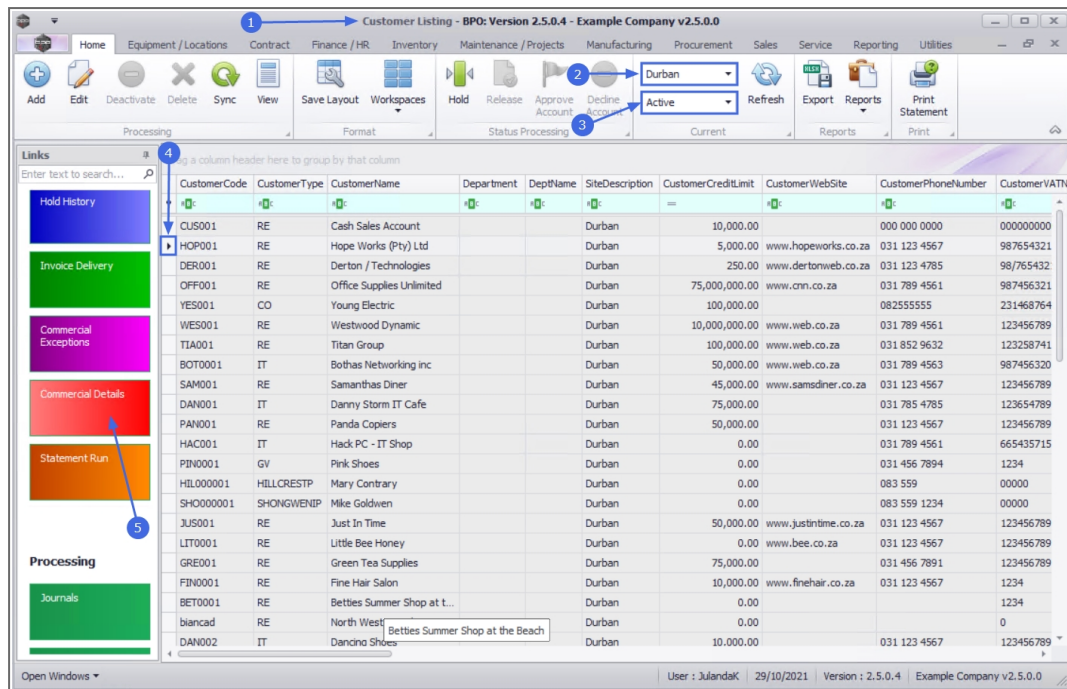
CUSTOMERS - COMMERCIAL DETAILS

The Customers Commercial Maintain screen allows you to make changes to the Commercial Header Details and the Individual Item Lines. For a detailed handling of Customer Commercials click on the link to navigate to [Sales Commercials](#).

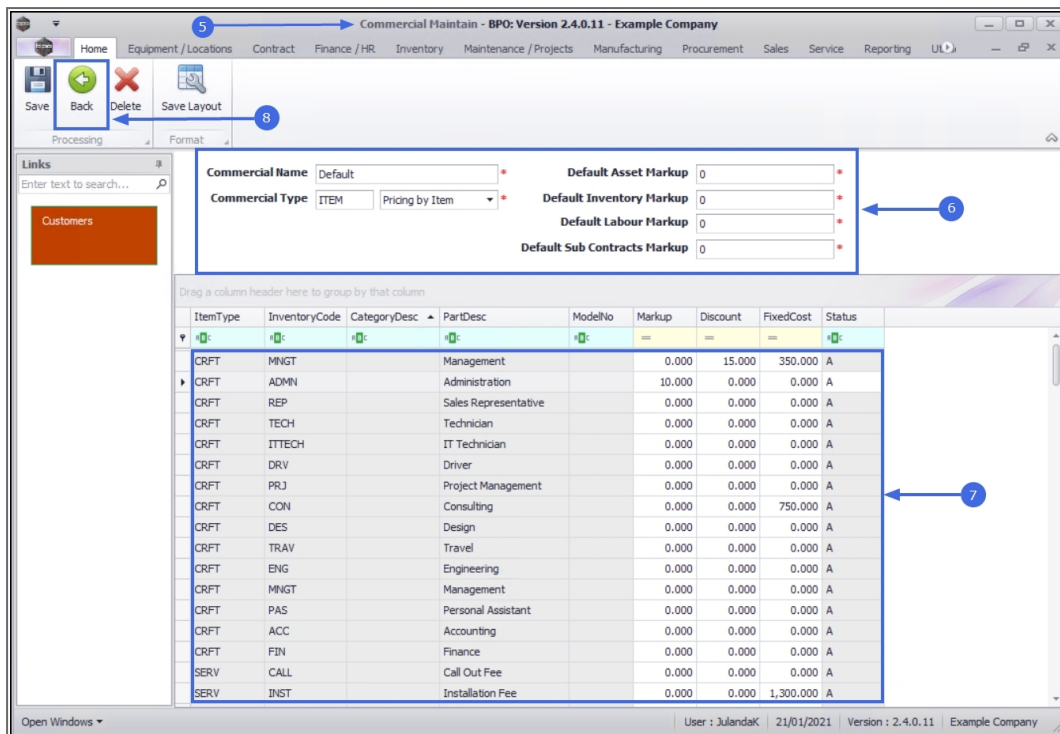
Ribbon Access: *Sales > Customers*



1. The **Customer Listing** screen will be displayed.
2. Select the **Site** where the customer can be located.
 - The example has **Durban** selected.
3. Select the **Status** for the customer.
 - The example has **Active** selected.
4. Select the **row** of the **customer** whose Commercial Details you wish to view.
5. Click the to **Commercial Details** tab.



- The **Commercial Maintain** screen will be displayed.
- Here you can **View**, **Add** and **Edit** customer pricing details e.g. Pricing by Item or Pricing by Type
- You can also **View**, **Add** and **Edit** specific details. For example: set a specific Markup, Discount or Fixed Cost for the following pricing items:
 - Asset (serialised items)
 - Inventory (non-serialised)
 - Labour
 - Sub-Contract (third-party)
- Click on **Back** to return to the **Customer Maintenance** screen.



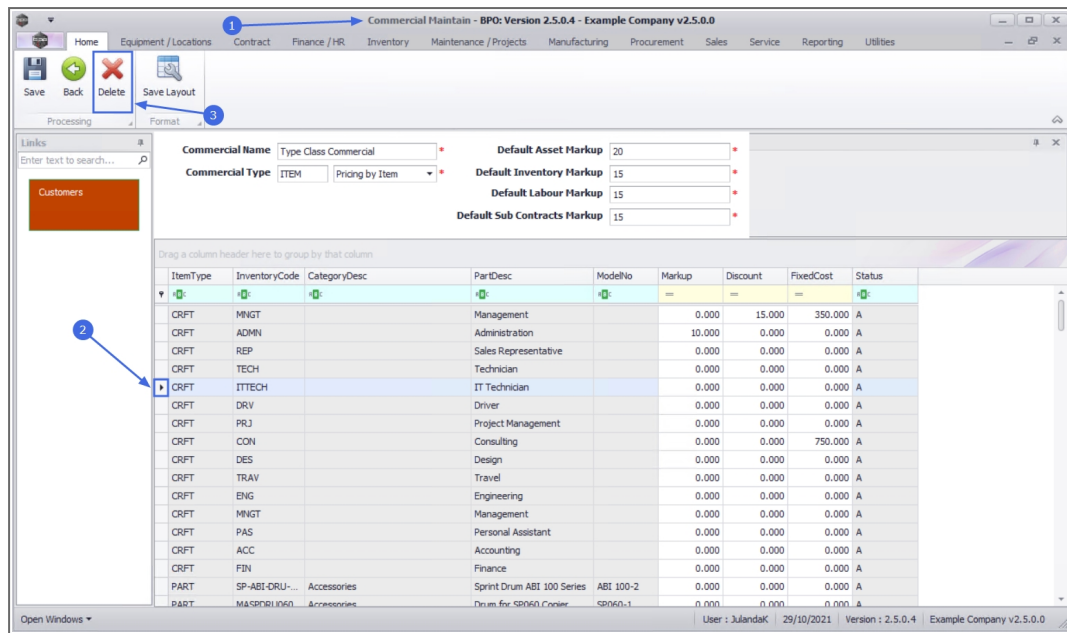
DELETE / DEACTIVATE COMMERCIAL ITEM

It is a good habit to first view the Customer list for the Commercial, to ensure that no Customers are still linked to the commercial, before deactivating it.

1. From the **Commercial Maintain** screen,
2. Click on the **row selector** in front of the Sales Commercial you wish to remove or deactivate.
3. Click on **Delete**.



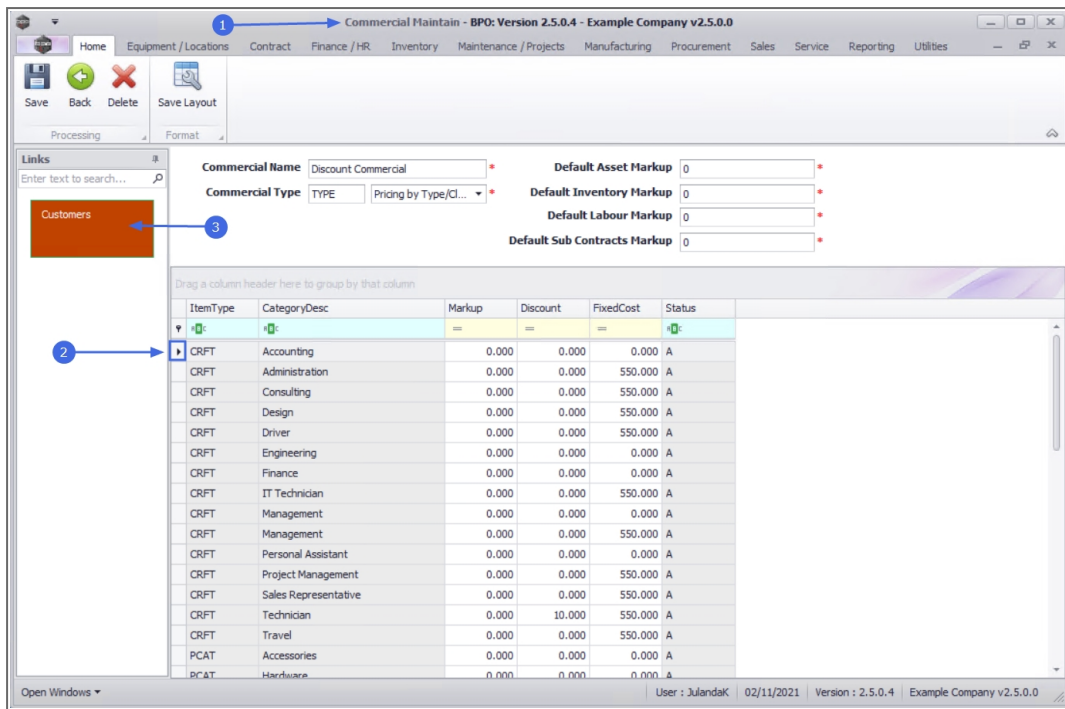
Short cut key: **Right click** to display the **Process** menu list. Click on **Delete**.



For a detailed handling of this topic refer to [Commercials - Delete \(Deactivate\) Commercial](#)

VIEW CUSTOMERS LINKED TO COMMERCIAL

1. From the **Commercial Maintain** screen,
2. Click on the **row** of the Sales Commercial item you wish to view.
3. Click on the **Customers** tile.



Commercial Maintain - BPO: Version 2.5.0.4 - Example Company v2.5.0.0

Commercial Name: Discount Commercial

Commercial Type: TYPE

Default Asset Markup: 0

Default Inventory Markup: 0

Default Labour Markup: 0

Default Sub Contracts Markup: 0

Item Type	Category Desc	Markup	Discount	Fixed Cost	Status
CRFT	Accounting	0.000	0.000	0.000	A
CRFT	Administration	0.000	0.000	\$50.000	A
CRFT	Consulting	0.000	0.000	\$50.000	A
CRFT	Design	0.000	0.000	\$50.000	A
CRFT	Driver	0.000	0.000	\$50.000	A
CRFT	Engineering	0.000	0.000	0.000	A
CRFT	Finance	0.000	0.000	0.000	A
CRFT	IT Technician	0.000	0.000	\$50.000	A
CRFT	Management	0.000	0.000	0.000	A
CRFT	Management	0.000	0.000	\$50.000	A
CRFT	Personal Assistant	0.000	0.000	0.000	A
CRFT	Project Management	0.000	0.000	\$50.000	A
CRFT	Sales Representative	0.000	0.000	\$50.000	A
CRFT	Technician	0.000	10.000	\$50.000	A
CRFT	Travel	0.000	0.000	\$50.000	A
PCAT	Accessories	0.000	0.000	0.000	A
PCAT	Hardware	0.000	0.000	0.000	A

4. The **Sales Commercial Customers** screen will display.
5. From this screen you can view a list of all the customers linked to the selected Sales Commercial.



Note that the information on this screen can only be viewed and no changes can be made.

6. Click on **Back** to return to the **Sales Commercial** screen.

Sales Commercial Customers - BPO: Version 2.5.0.4 - Example Company v2.5.0.0

Home Equipment / Locations Contract Finance / HR Inventory Maintenance / Projects Manufacturing Procurement Sales Service Reporting Utilities

Back Save Layout Workspaces Refresh

Form Curr...

Drag a column header here to group by that column

CustomerCode	CustomerName	Status
▼	▼	▼
▶ CUS001	Cash Sales Account	A
TIA001	Titan Group	A
JUS001	Just In Time	A
GRE001	Green Tea Supplies	A
DAN002	Dancing Shoes	A
BITL0002	Billys Barn	A
BITL0003	Billys Barn	A
BITL0004	Billy Barn	X

Open Windows ▼ User : JulandaK 02/11/2021 Version : 2.5.0.4 Example Company v2.5.0.0

Related Topics

- [Introduction to Commercials](#)
- [Customers - Commercial Exceptions](#)

MNU.061.029