

COMPANY

SYSTEM WAREHOUSES – IN-TRANSIT

System Warehouse set up is only required if you are going to use the In-transit or Quarantine warehousing functionality.

- **In-transit**
 - In-transit Configuration will need to be set up if your company has various sites set up and wishes to move goods from one site to another site via an intermediate location or an 'in-transit' location. Stock in this transit location are in the process of being transferred to a different warehouse and therefore cannot be picked for orders and issued until they are receiving into the destination warehouse. Two stock transfer transactions occur during this process:
 - i. Stock is transferred to the In-transit 'warehouse' (e.g. a container, or a transport truck).
 - ii. Stock is transferred from the In-transit 'warehouse' to a destination (stock) warehouse.

Important Notes:

- i. An In-transit Inventory Warehouse must be set up.
- ii. The Enforce In-transit flag must be set to 'Yes' in the Configurator.

IN-TRANSIT CONFIGURATION STEPS

1. [Set up an In-transit Inventory Warehouse](#)
2. [Set the Company Enforce In-transit Flag to "Yes"](#)

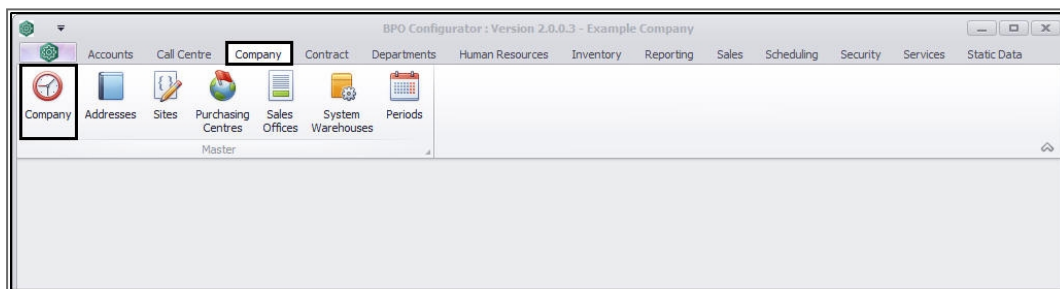
CREATE A SYSTEM IN-TRANSIT WAREHOUSE STEPS

3. [Create a System In-transit Warehouse](#)

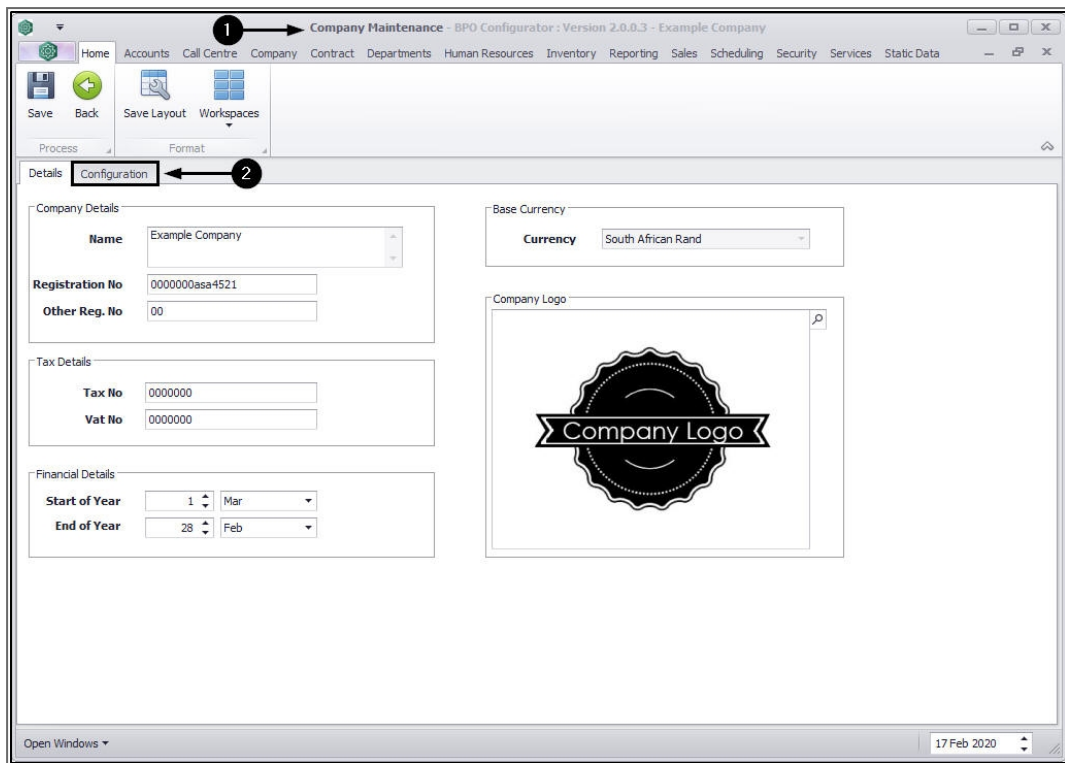
Follow the process in link **1** above. Step **2** and **3** are set out below.

SET THE ENFORCE IN-TRANSIT FLAG TO 'YES'

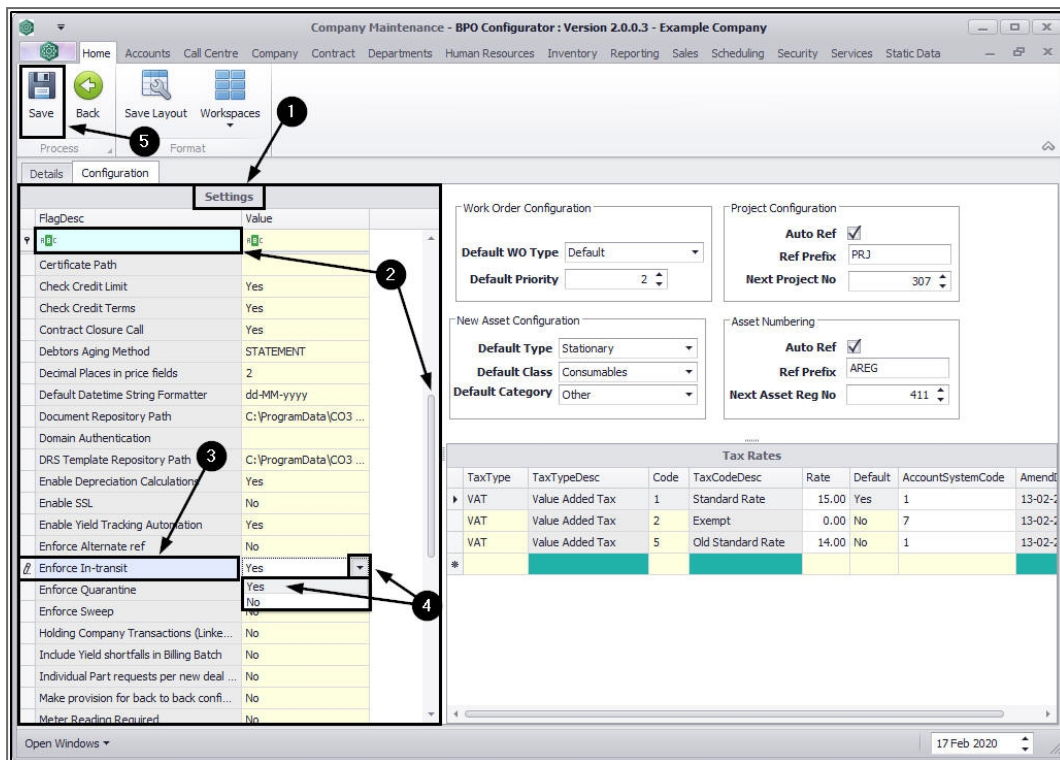
Ribbon Access: Configurator > Company > Company



1. The **Company Maintenance** screen will open.
2. Click on the **Configuration** tab.



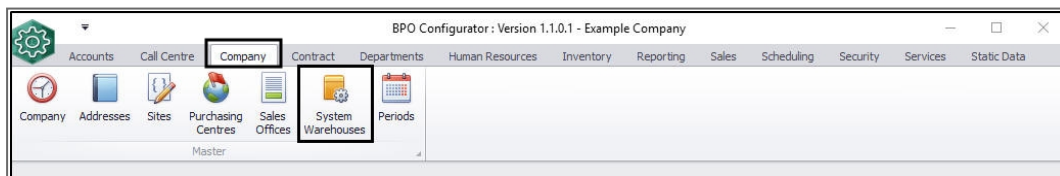
1. The **Settings** frame will be displayed.
2. Scroll down the Settings list or use the **filter row** to search for the
3. **Enforce In-transit** flag description.
4. Ensure that the flag **Value** is set to **Yes**.
5. Click on **Save**, if the flag value was changed.



Once you have set up the **In-transit Inventory Warehouse** and set the **Enforce In-transit flag to 'Yes'** you can follow the processes to:

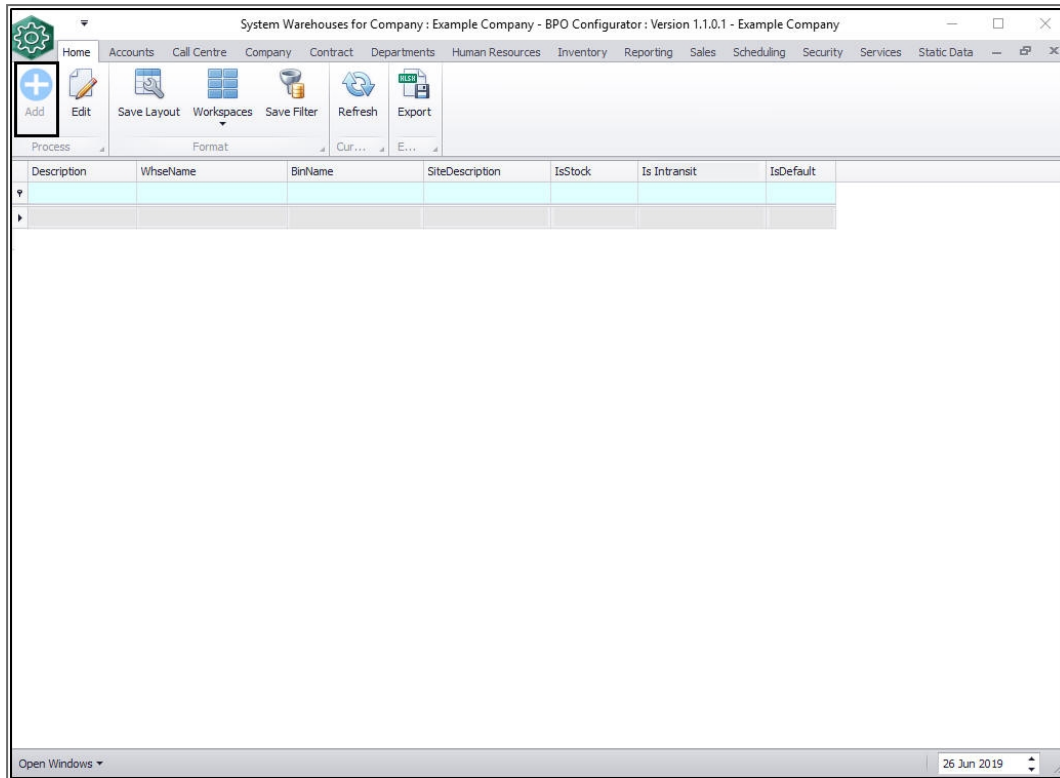
CREATE A SYSTEM IN-TRANSIT WAREHOUSE

Ribbon Access: Configurator > Company > System Warehouses



The **System Warehouses for Company: []** screen will be displayed.

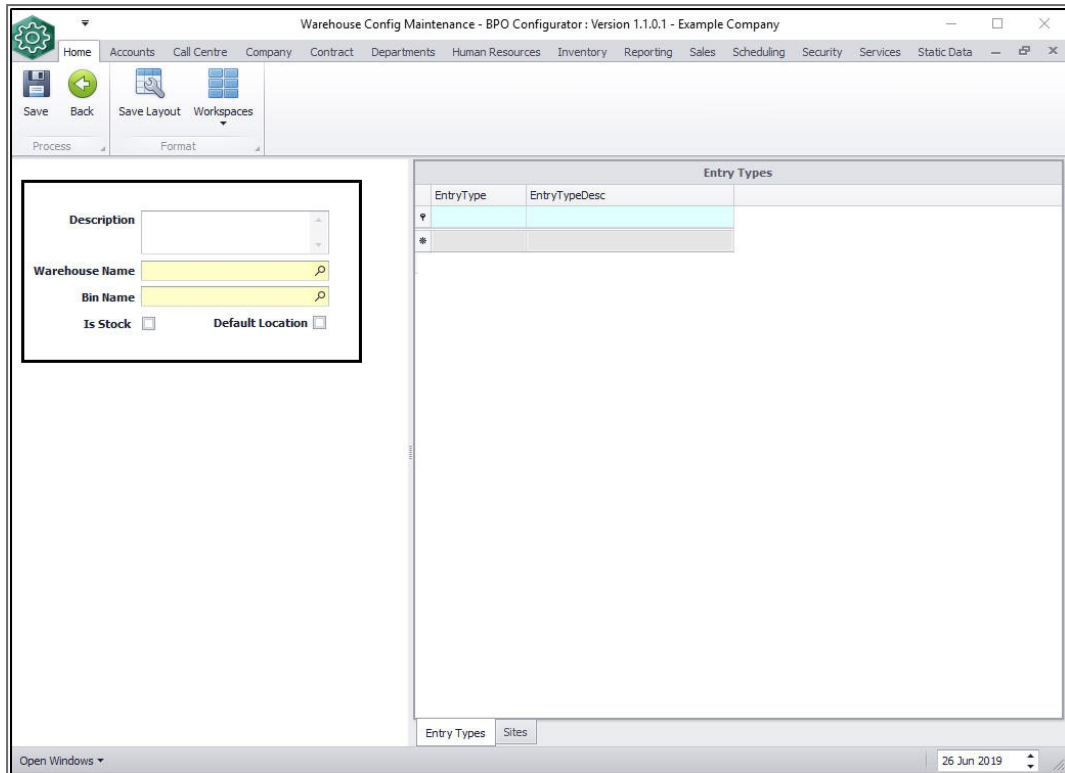
- Click on **Add**.



The **Warehouse Config Maintenance** screen will be displayed.

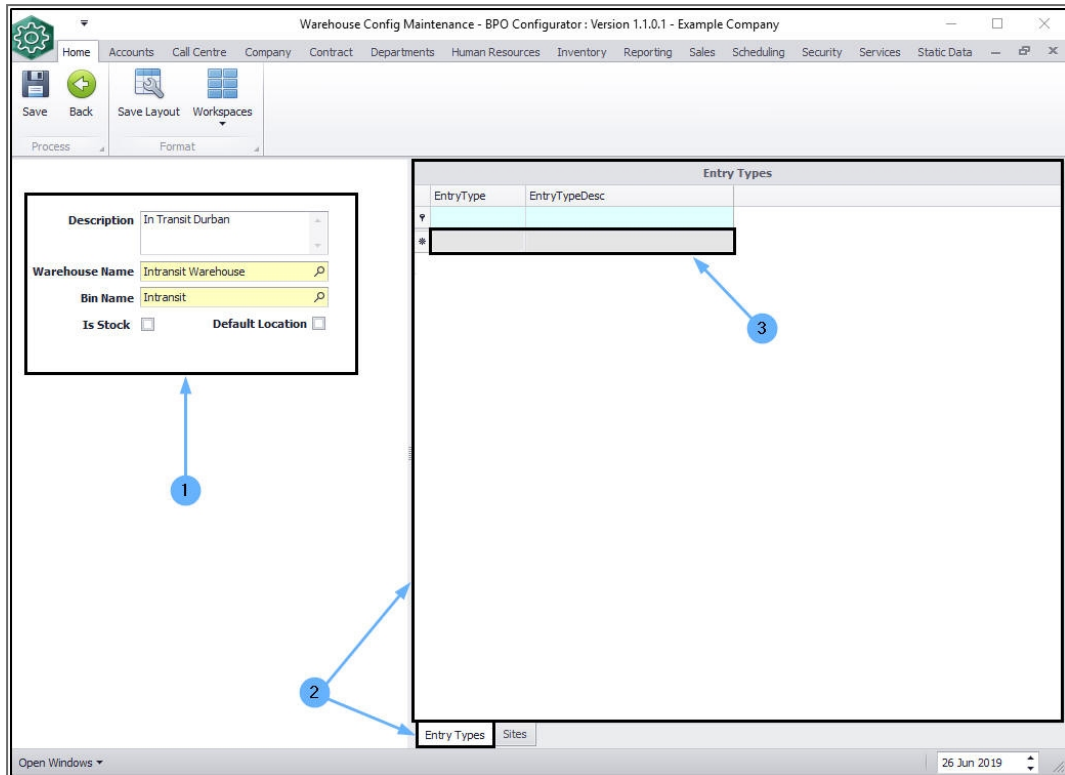
WAREHOUSE DETAILS

- **Description** : Type in a **Description** that will make sense for you, e.g. **In-transit**.
- **Warehouse Name** : Search for the warehouse that you wish to use as your **'In-transit' Warehouse**.
- **Bin Name** : Search for the bin you wish to use as your **'In-transit' Bin**.
- **Is Stock** : Ensure that this check box is un-ticked.
- **Default Location** : Ensure that this check box is un-ticked.



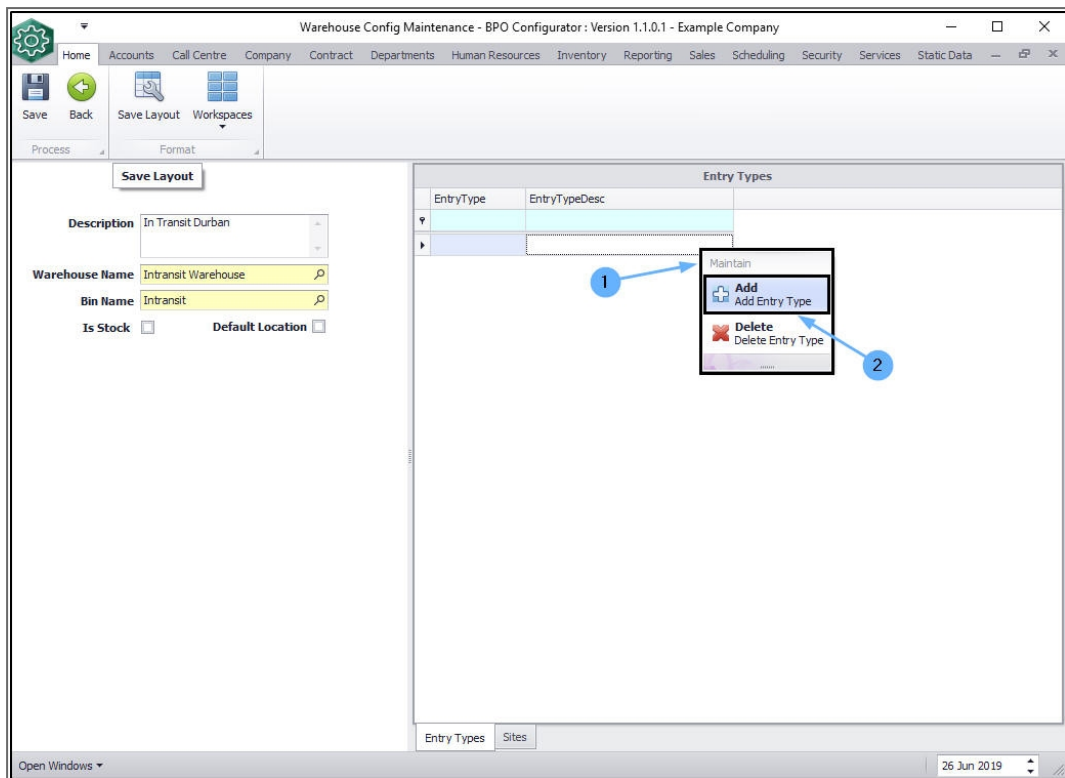
ENTRY TYPES

1. When you have entered the In-transit warehouse details,
2. Click on the **Entry Types** tab to bring this frame to the fore.
3. **Right click** on the empty row in the data grid (not the filter row).



The screenshot shows the 'Warehouse Config Maintenance - BPO Configurator : Version 1.1.0.1 - Example Company' window. The interface includes a top menu bar with options like Home, Accounts, Call Centre, Company, Contract, Departments, Human Resources, Inventory, Reporting, Sales, Scheduling, Security, Services, and Static Data. Below the menu is a toolbar with buttons for Save, Back, Save Layout, and Workspaces. The main area is divided into two sections. On the left, there is a form for 'Description' with fields for 'In Transit Durban', 'Warehouse Name' (Intransit Warehouse), 'Bin Name' (Intransit), 'Is Stock' (checkbox), and 'Default Location' (checkbox). On the right, there is a table titled 'Entry Types' with columns 'EntryType' and 'EntryTypeDesc'. The table has one row highlighted in blue. A blue arrow labeled '1' points to the 'Description' form. A blue arrow labeled '2' points to the 'Entry Types' table. A blue arrow labeled '3' points to the highlighted row in the 'Entry Types' table.

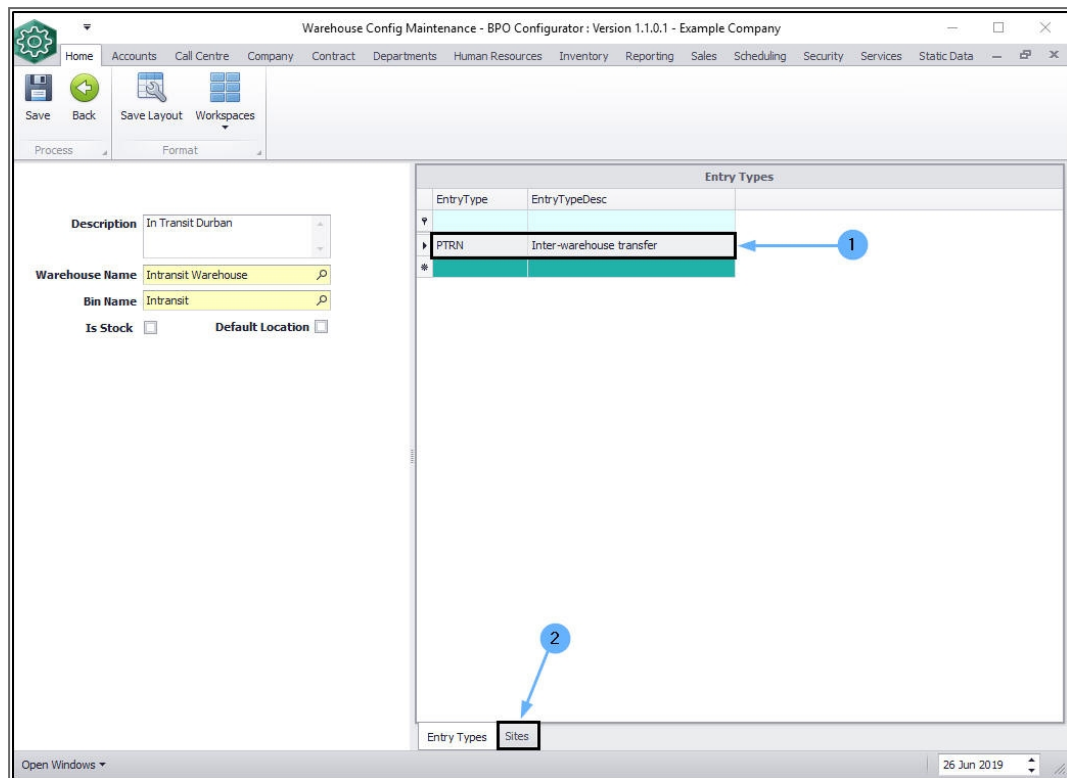
1. A **Maintain** menu will pop up.
2. Click on **Add** - Add Entry Type.



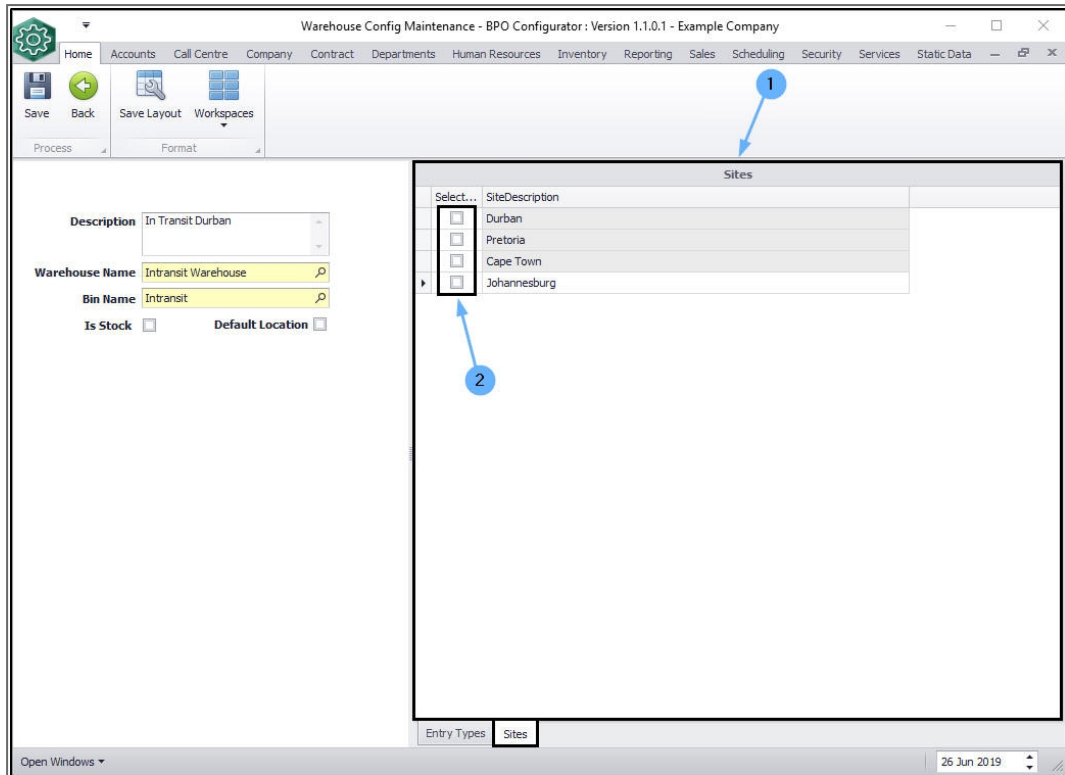
1. Search for and select **PTRN** - Inter-warehouse transfer, this will then populate the Entry Types data grid.

SITES

2. Click on the **Sites** tab.

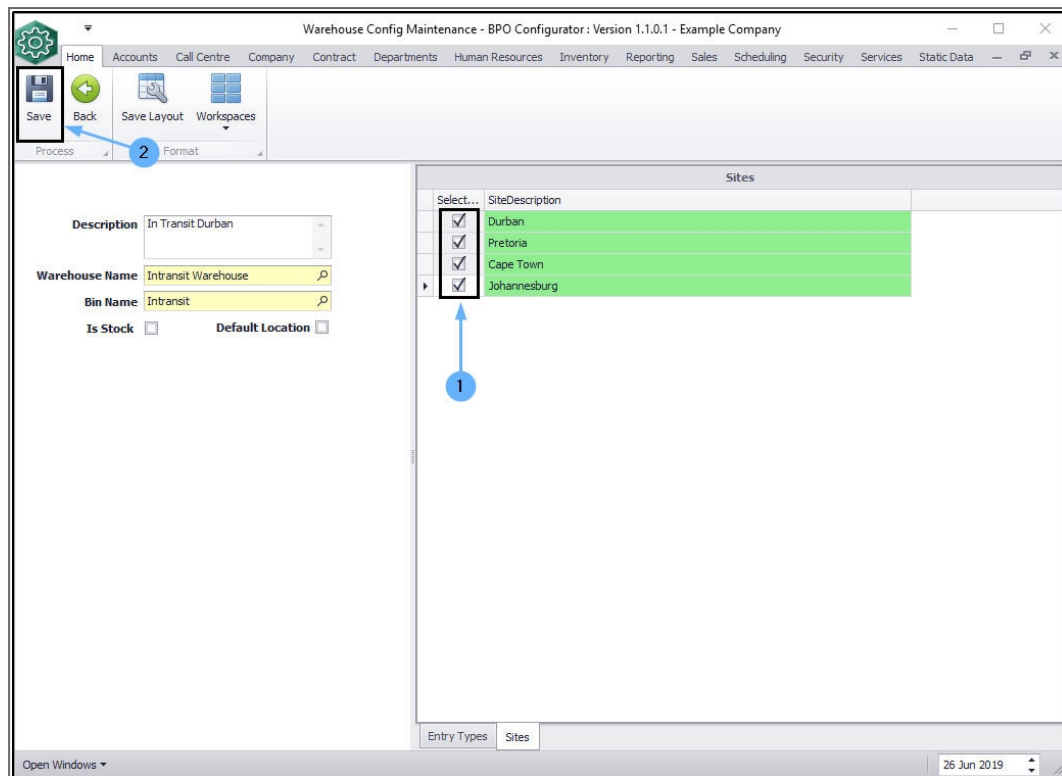


1. The **Sites** frame will come to the fore.
2. Select the **check box(es)** in front of the **site(s)** where you wish to link the In-transit warehouse.



SAVE WAREHOUSE

1. When you have finished making your selections,
2. Click on **Save**.



- You will return to the ***System Warehouses for Company: []*** screen, where you can view the newly added In-transit warehouse.

System Warehouses for Company : Example Company - BPO Configurator : Version 1.1.0.1 - Example Company

Home Accounts Call Centre Company Contract Departments Human Resources Inventory Reporting Sales Scheduling Security Services Static Data

Add Edit Save Layout Workspaces Save Filter Refresh Export

Process Format Cur... E...

Description	WhseName	BinName	SiteDescription	IsStock	IsIntransit	IsDefault
In Transit Durban	Intransit Warehouse	Intransit	Durban	No	Yes	No

Open Windows 26 Jun 2019

MNU.091.006