

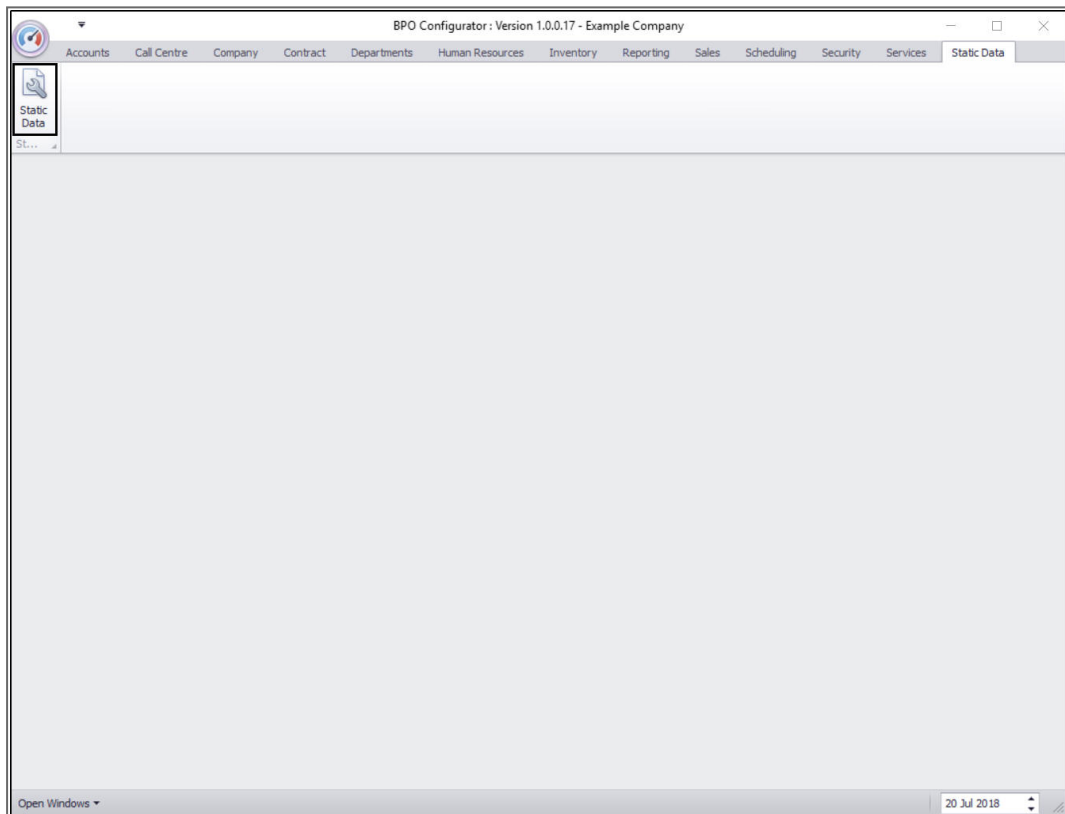
STATIC DATA

STATIC DATA – CUSTOMER: AREAS

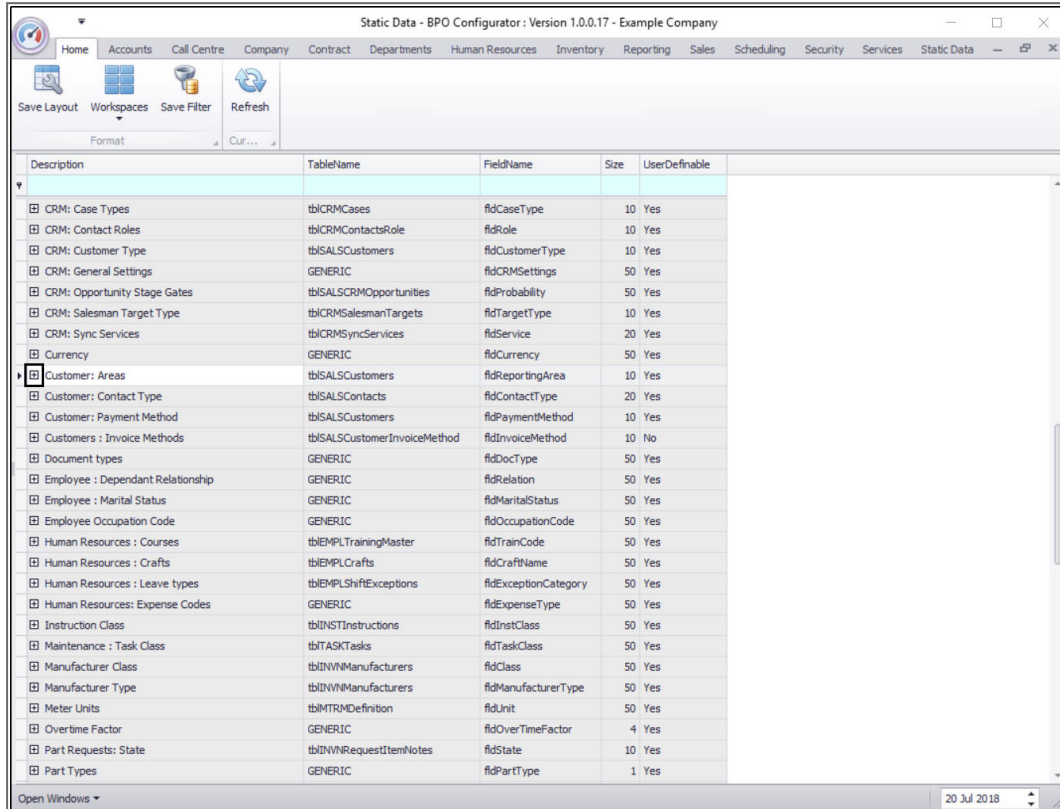
Reporting Areas are required for Customers in BPO CRM, but can also be used in BPO without BPO CRM.

These Reporting Areas give you the ability to categorise your clients, or group them into specific physical or otherwise pre-defined areas.

Ribbon Access: *Configurator > Static Data > Static Data*



- The **Static Data** listing screen will be displayed.
- Use the **filter row** or **scroll down** the list until you find the **Customer: Areas** row.
- Click on the **expand** icon in this row.



Description	TableName	FieldName	Size	UserDefinable
CRM: Case Types	tblCRMCases	fldCaseType	10	Yes
CRM: Contact Roles	tblCRMContactsRole	fldRole	10	Yes
CRM: Customer Type	tblSALSCustomers	fldCustomerType	10	Yes
CRM: General Settings	GENERIC	fldCRMSettings	50	Yes
CRM: Opportunity Stage Gates	tblSALSCRMOpportunities	fldProbability	50	Yes
CRM: Salesman Target Type	tblCRMSalesmanTargets	fldTargetType	10	Yes
CRM: Sync Services	tblCRMSyncServices	fldService	20	Yes
Currency	GENERIC	fldCurrency	50	Yes
Customer: Areas	tblSALSCustomers	fldReportingArea	10	Yes
Customer: Contact Type	tblSALSCustomers	fldContactType	20	Yes
Customer: Payment Method	tblSALSCustomers	fldPaymentMethod	10	Yes
Customers: Invoice Methods	tblSALSCustomerInvoiceMethod	fldInvoiceMethod	10	No
Document types	GENERIC	fldDocType	50	Yes
Employee: Dependant Relationship	GENERIC	fldRelation	50	Yes
Employee: Marital Status	GENERIC	fldMaritalStatus	50	Yes
Employee Occupation Code	GENERIC	fldOccupationCode	50	Yes
Human Resources: Courses	tblEMPLTrainingMaster	fldTrainCode	50	Yes
Human Resources: Crafts	tblEMPLCrafts	fldCraftName	50	Yes
Human Resources: Leave types	tblEMPLShiftExceptions	fldExceptionCategory	50	Yes
Human Resources: Expense Codes	GENERIC	fldExpenseType	50	Yes
Instruction Class	tblINSTInstructions	fldInstClass	50	Yes
Maintenance: Task Class	tblTASKTasks	fldTaskClass	50	Yes
Manufacturer Class	tblINWMManufacturers	fldClass	50	Yes
Manufacturer Type	tblINWMManufacturers	fldManufacturerType	50	Yes
Meter Units	tblMTRMDefinition	fldUnit	50	Yes
Overtime Factor	GENERIC	fldOverTimeFactor	4	Yes
Part Requests: State	tblINWNRequestItemNotes	fldState	10	Yes
Part Types	GENERIC	fldPartType	1	Yes

- The Customer: Areas **Codes** frame will be expanded.
- Here you can view a list of **Customer: Areas codes** currently on the system.
- **Right click** anywhere in a **row** of this **Codes** data grid.

Static Data - BPO Configurator : Version 1.0.0.17 - Example Company

Home Accounts Call Centre Company Contract Departments Human Resources Inventory Reporting Sales Scheduling Security Services Static Data

Save Layout Workspaces Save Filter Refresh

Format Cuf...

Description	TableName	FieldName	Size	UserDefinable
CRM: Case Types	tblCRMCases	fldCaseType	10	Yes
CRM: Contact Roles	tblCRMContactsRole	fldRole	10	Yes
CRM: Customer Type	tblSALSCustomers	fldCustomerType	10	Yes
CRM: General Settings	GENERIC	fldCRMSettings	50	Yes
CRM: Opportunity Stage Gates	tblSALSCRMOpportunities	fldProbability	50	Yes
CRM: Salesman Target Type	tblCRMSalesmanTargets	fldTargetType	10	Yes
CRM: Sync Services	tblCRMService	fldService	20	Yes
Currency	GENERIC	fldCurrency	50	Yes
Customer: Areas	tblSALSCustomers	fldReportingArea	10	Yes

Codes

Code	CodeDescription	CodeType	Status	SortOrder
JHB	Johannesburg	None	A	1
DBN	Durban	None	A	1

Customer: Contact Type	tblSALSCustomers	fldContactType	20	Yes
Customer: Payment Method	tblSALSCustomers	fldPaymentMethod	10	Yes
Customers : Invoice Methods	tblSALSCustomerInvoiceMethod	fldInvoiceMethod	10	No
Document types	GENERIC	fldDocType	50	Yes
Employee : Dependant Relationship	GENERIC	fldRelation	50	Yes
Employee : Marital Status	GENERIC	fldMaritalStatus	50	Yes
Employee Occupation Code	GENERIC	fldOccupationCode	50	Yes
Human Resources : Courses	tblEMPLTrainingMaster	fldTrainCode	50	Yes
Human Resources : Crafts	tblEMPLCrafts	fldCraftName	50	Yes
Human Resources : Leave types	tblEMPLShiftExceptions	fldExceptionCategory	50	Yes
Human Resources: Expense Codes	GENERIC	fldExpenseType	50	Yes
Instruction Class	tblINSTInstructions	fldInstClass	50	Yes
Maintenance : Task Class	tblTASKTask	fldTaskClass	50	Yes

Open Windows 20 Jul 2018

- A **Process** menu will pop up.
- Click on **Add** - Add New Code.

Static Data - BPO Configurator : Version 1.0.0.17 - Example Company

Home Accounts Call Centre Company Contract Departments Human Resources Inventory Reporting Sales Scheduling Security Services Static Data

Save Layout Workspaces Save Filter Refresh

Format Cuf...

Description	TableName	FieldName	Size	UserDefinable
CRM: Case Types	tblCRMCases	fldCaseType	10	Yes
CRM: Contact Roles	tblCRMContactsRole	fldRole	10	Yes
CRM: Customer Type	tblSALSCustomers	fldCustomerType	10	Yes
CRM: General Settings	GENERIC	fldCRMSettings	50	Yes
CRM: Opportunity Stage Gates	tblSALSCRMOpportunities	fldProbability	50	Yes
CRM: Salesman Target Type	tblCRMSalesmanTargets	fldTargetType	10	Yes
CRM: Sync Services	tblCRMSyncServices	fldService	20	Yes
Currency	GENERIC	fldCurrency	50	Yes
Customer: Areas	tblSALSCustomers	fldReportingArea	10	Yes

Codes

Code	CodeDescription	CodeType	Status	SortOrder
JHB	Johannesburg	None	A	1
DBN	Durban	None	A	1
*				

Process

Add New Code

Delete Code

Customer: Contact Type	tblSALSCustomers	fldContactType	50	Yes
Customer: Payment Method	tblSALSCustomers	fldPaymentMethod	50	Yes
Customers : Invoice Methods	tblSALSCustomerInvoiceMethod	fldInvoiceMethod	50	Yes
Document types	GENERIC	fldDocType	50	Yes
Employee : Dependant Relationship	GENERIC	fldRelation	50	Yes
Employee : Marital Status	GENERIC	fldMaritalStatus	50	Yes
Employee Occupation Code	GENERIC	fldOccupationCode	50	Yes
Human Resources : Courses	tblEMPLTrainingMaster	fldTrainCode	50	Yes
Human Resources : Crafts	tblEMPLCrafts	fldCraftName	50	Yes
Human Resources : Leave types	tblEMPLShiftExceptions	fldExceptionCategory	50	Yes
Human Resources: Expense Codes	GENERIC	fldExpenseType	50	Yes
Instruction Class	tblINSTInstructions	fldInstClass	50	Yes
Maintenance : Task Class	tblTASKTaskClass	fldTaskClass	50	Yes

Open Windows

20 Jul 2018

- The **final row** in the Codes data grid will now be '**activated**'.
- The **Code Type**, **Status** and **Sort Order** columns will now be populated.

Static Data - BPO Configurator : Version 1.0.0.17 - Example Company

Home Accounts Call Centre Company Contract Departments Human Resources Inventory Reporting Sales Scheduling Security Services Static Data

Save Layout Workspaces Save Filter Refresh

Format Cuf...

Description	TableName	FieldName	Size	UserDefinable
CRM: Case Types	tblCRMCases	fldCaseType	10	Yes
CRM: Contact Roles	tblCRMContactsRole	fldRole	10	Yes
CRM: Customer Type	tblSALSCustomers	fldCustomerType	10	Yes
CRM: General Settings	GENERIC	fldCRMSettings	50	Yes
CRM: Opportunity Stage Gates	tblSALSCRMOpportunities	fldProbability	50	Yes
CRM: Salesman Target Type	tblCRMSalesmanTargets	fldTargetType	10	Yes
CRM: Sync Services	tblCRMSyncServices	fldService	20	Yes
Currency	GENERIC	fldCurrency	50	Yes
Customer: Areas	tblSALSCustomers	fldReportingArea	10	Yes

Codes

Code	CodeDescription	CodeType	Status	SortOrder
JHB	Johannesburg	None	A	1
DBN	Durban	None	A	1
I		None	A	0

Customer: Contact Type	tblSALSCustomers	fldContactType	20	Yes
Customer: Payment Method	tblSALSCustomers	fldPaymentMethod	10	Yes
Customers : Invoice Methods	tblSALSCustomerInvoiceMethod	fldInvoiceMethod	10	No
Document types	GENERIC	fldDocType	50	Yes
Employee : Dependant Relationship	GENERIC	fldRelation	50	Yes
Employee : Marital Status	GENERIC	fldMaritalStatus	50	Yes
Employee Occupation Code	GENERIC	fldOccupationCode	50	Yes
Human Resources : Courses	tblEMPLTrainingMaster	fldTrainCode	50	Yes
Human Resources : Crafts	tblEMPLCrafts	fldCraftName	50	Yes
Human Resources : Leave types	tblEMPLShiftExceptions	fldExceptionCategory	50	Yes
Human Resources: Expense Codes	GENERIC	fldExpenseType	50	Yes
Instruction Class	tblINSTInstructions	fldInstClass	50	Yes
Maintenance : Task Class	tblTASKTask	fldTaskClass	50	Yes

Open Windows 20 Jul 2018

- **Code:** Click in this text box and type in a **code** specific for this new Customer: Area.
- **Code Description:** Click in this text box and type in a **description** for this new Customer: Area code.

Static Data - BPO Configurator : Version 1.0.0.17 - Example Company

Home Accounts Call Centre Company Contract Departments Human Resources Inventory Reporting Sales Scheduling Security Services Static Data

Save Layout Workspaces Save Filter Refresh

Format Cuf...

Description	TableName	FieldName	Size	UserDefinable
CRM: Case Types	tblCRMCases	fldCaseType	10	Yes
CRM: Contact Roles	tblCRMContactsRole	fldRole	10	Yes
CRM: Customer Type	tblSALSCustomers	fldCustomerType	10	Yes
CRM: General Settings	GENERIC	fldCRMSettings	50	Yes
CRM: Opportunity Stage Gates	tblSALSCRMOpportunities	fldProbability	50	Yes
CRM: Salesman Target Type	tblCRMSalesmanTargets	fldTargetType	10	Yes
CRM: Sync Services	tblCRMSyncServices	fldService	20	Yes
Currency	GENERIC	fldCurrency	50	Yes
Customer: Areas	tblSALSCustomers	fldReportingArea	10	Yes

Codes

Code	CodeDescription	CodeType	Status	SortOrder
JHB	Johannesburg	None	A	1
DBN	Durban	None	A	1
I		None	A	0

Customer: Contact Type	tblSALSCustomers	fldContactType	20	Yes
Customer: Payment Method	tblSALSCustomers	fldPaymentMethod	10	Yes
Customers : Invoice Methods	tblSALSCustomerInvoiceMethod	fldInvoiceMethod	10	No
Document types	GENERIC	fldDocType	50	Yes
Employee : Dependant Relationship	GENERIC	fldRelation	50	Yes
Employee : Marital Status	GENERIC	fldMaritalStatus	50	Yes
Employee Occupation Code	GENERIC	fldOccupationCode	50	Yes
Human Resources : Courses	tblEMPLTrainingMaster	fldTrainCode	50	Yes
Human Resources : Crafts	tblEMPLCrafts	fldCraftName	50	Yes
Human Resources : Leave types	tblEMPLShiftExceptions	fldExceptionCategory	50	Yes
Human Resources: Expense Codes	GENERIC	fldExpenseType	50	Yes
Instruction Class	tblINSTInstructions	fldInstClass	50	Yes
Maintenance : Task Class	tblTASKTaskClass	fldTaskClass	50	Yes

Open Windows

20 Jul 2018

- **Code Type:** This can remain as **None**.
- **Status:** This will auto populate with **A** - Active.
- **Sort Order:** Click in this text box and either type in or use the arrow indicators to select the sort order for this new Customer: Area code.
 - **Note:** The **sort order** is the order in which this will appear in the Customer: Area code drop-down list in BPO. If each Customer: Area code has the number **1**, then the drop-down list will usually default to an alphabetical order in BPO. If, for example, it is numbered **2**, then it will appear **2nd** in the drop-down list in BPO.

Static Data - BPO Configurator : Version 1.0.0.17 - Example Company

Home Accounts Call Centre Company Contract Departments Human Resources Inventory Reporting Sales Scheduling Security Services Static Data

Save Layout Workspaces Save Filter Refresh

Format Cuf...

Description	TableName	FieldName	Size	UserDefinable
CRM: Case Types	tblCRMCases	fldCaseType	10	Yes
CRM: Contact Roles	tblCRMContactsRole	fldRole	10	Yes
CRM: Customer Type	tblSALSCustomers	fldCustomerType	10	Yes
CRM: General Settings	GENERIC	fldCRMSettings	50	Yes
CRM: Opportunity Stage Gates	tblSALSCRMOpportunities	fldProbability	50	Yes
CRM: Salesman Target Type	tblCRMSalesmanTargets	fldTargetType	10	Yes
CRM: Sync Services	tblCRMSyncServices	fldService	20	Yes
Currency	GENERIC	fldCurrency	50	Yes
Customer: Areas	tblSALSCustomers	fldReportingArea	10	Yes

Codes

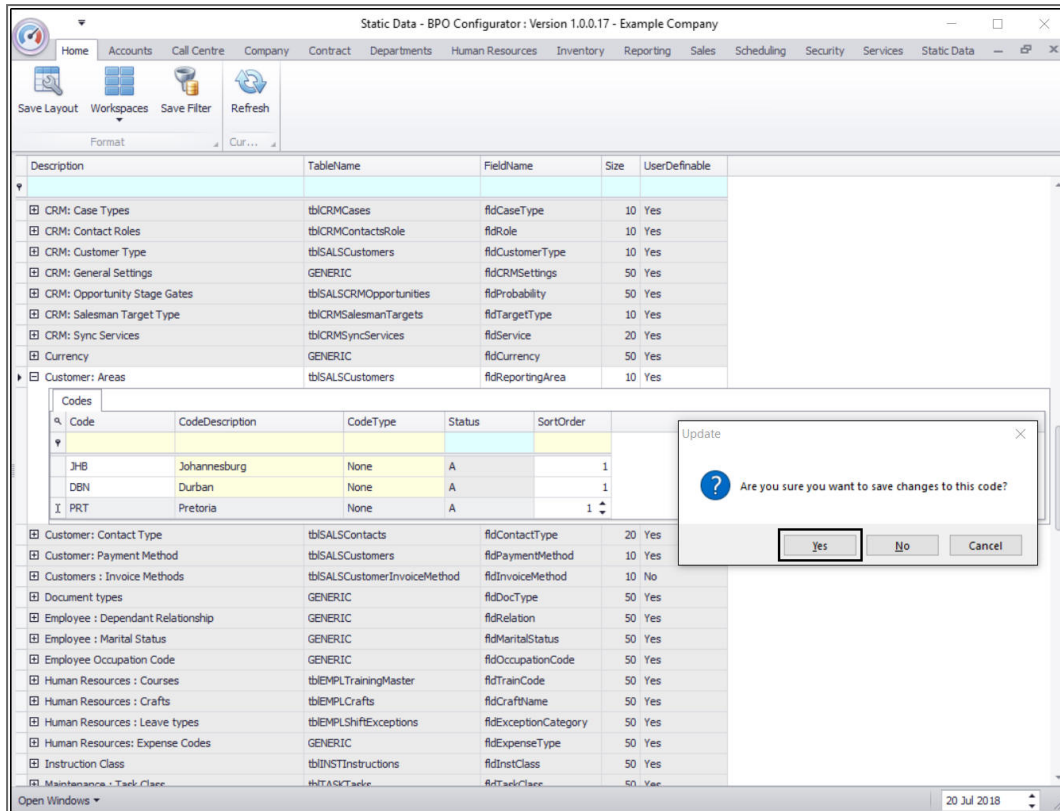
Code	CodeDescription	CodeType	Status	SortOrder
JHB	Johannesburg	None	A	1
DBN	Durban	None	A	1
PRT	Pretoria	None	A	0

Customer: Contact Type	tblSALSCustomers	fldContactType	20	Yes
Customer: Payment Method	tblSALSCustomers	fldPaymentMethod	10	Yes
Customers : Invoice Methods	tblSALSCustomerInvoiceMethod	fldInvoiceMethod	10	No
Document types	GENERIC	fldDocType	50	Yes
Employee : Dependant Relationship	GENERIC	fldRelation	50	Yes
Employee : Marital Status	GENERIC	fldMaritalStatus	50	Yes
Employee Occupation Code	GENERIC	fldOccupationCode	50	Yes
Human Resources : Courses	tblEMPLTrainingMaster	fldTrainCode	50	Yes
Human Resources : Crafts	tblEMPLCrafts	fldCraftName	50	Yes
Human Resources : Leave types	tblEMPLShiftExceptions	fldExceptionCategory	50	Yes
Human Resources: Expense Codes	GENERIC	fldExpenseType	50	Yes
Instruction Class	tblINSTInstructions	fldInstClass	50	Yes
Maintenance : Task Class	tblTASKTask	fldTaskClass	50	Yes

Open Windows

20 Jul 2018

- When you have finished adding the new Customer: Area code details, press **Enter**.
- An **Update** message box will appear, asking;
 - **Are you sure you want to save changes to this code?**
- Click on **Yes**.



The screenshot shows the 'Static Data - BPO Configurator' application window. The main table displays various static data entries. The 'Customer: Areas' section is expanded, showing a list of codes. A confirmation dialog box is open, asking 'Are you sure you want to save changes to this code?' with 'Yes', 'No', and 'Cancel' buttons.

Description	TableName	FieldName	Size	UserDefinable
CRM: Case Types	tblCRMCases	fldCaseType	10	Yes
CRM: Contact Roles	tblCRMContactsRole	fldRole	10	Yes
CRM: Customer Type	tblSALSCustomers	fldCustomerType	10	Yes
CRM: General Settings	GENERIC	fldCRMSettings	50	Yes
CRM: Opportunity Stage Gates	tblSALSCRMOpportunities	fldProbability	50	Yes
CRM: Salesman Target Type	tblCRMSalesmanTargets	fldTargetType	10	Yes
CRM: Sync Services	tblCRMSyncServices	fldService	20	Yes
Currency	GENERIC	fldCurrency	50	Yes
Customer: Areas	tblSALSCustomers	fldReportingArea	10	Yes

Code	CodeDescription	CodeType	Status	SortOrder
JHB	Johannesburg	None	A	1
DBN	Durban	None	A	1
PRT	Pretoria	None	A	1

- The new Customer: Area code will be **saved** and a **new row** will be added to the **Codes** data grid.
- **Collapse** the Codes frame when you are done.

Static Data - BPO Configurator : Version 1.0.0.17 - Example Company

Home Accounts Call Centre Company Contract Departments Human Resources Inventory Reporting Sales Scheduling Security Services Static Data

Save Layout Workspaces Save Filter Refresh

Format Cut...

Description	TableName	FieldName	Size	UserDefinable
CRM: Case Types	tblCRMCases	fldCaseType	10	Yes
CRM: Contact Roles	tblCRMContactsRole	fldRole	10	Yes
CRM: Customer Type	tblSALSCustomers	fldCustomerType	10	Yes
CRM: General Settings	GENERIC	fldCRMSettings	50	Yes
CRM: Opportunity Stage Gates	tblSALSCRMOpportunities	fldProbability	50	Yes
CRM: Salesman Target Type	tblCRMSalesmanTargets	fldTargetType	10	Yes
CRM: Sync Services	tblCRMSyncServices	fldService	20	Yes
Currency	GENERIC	fldCurrency	50	Yes
Customer: Areas	tblSALSCustomers	fldReportingArea	10	Yes

Codes

Code	CodeDescription	CodeType	Status	SortOrder
JHB	Johannesburg	None	A	1
DBN	Durban	None	A	1
PRT	Pretoria	None	A	1

Customer: Contact Type	tblSALSCustomers	fldContactType	20	Yes
Customer: Payment Method	tblSALSCustomers	fldPaymentMethod	10	Yes
Customers: Invoice Methods	tblSALSCustomerInvoiceMethod	fldInvoiceMethod	10	No
Document types	GENERIC	fldDocType	50	Yes
Employee: Dependant Relationship	GENERIC	fldRelation	50	Yes
Employee: Marital Status	GENERIC	fldMaritalStatus	50	Yes
Employee Occupation Code	GENERIC	fldOccupationCode	50	Yes
Human Resources: Courses	tblEMPLTrainingMaster	fldTrainCode	50	Yes
Human Resources: Crafts	tblEMPLCrafts	fldCraftName	50	Yes
Human Resources: Leave types	tblEMPLShiftExceptions	fldExceptionCategory	50	Yes
Human Resources: Expense Codes	GENERIC	fldExpenseType	50	Yes
Instruction Class	tblINSTRInstructions	fldInstClass	50	Yes

Open Windows

20 Jul 2018

MNU.108.047

