

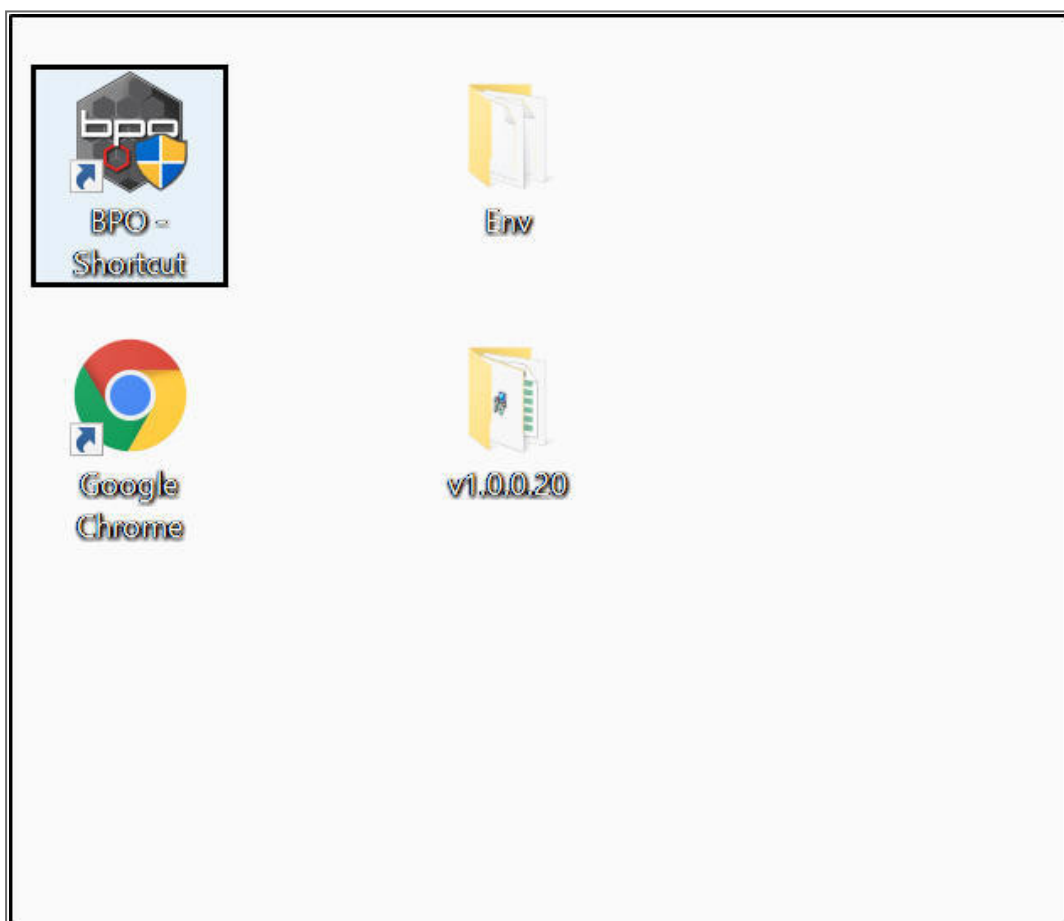
INSTALLATION AND CONFIGURATION

BPO2 ENVIRONMENT CONFIGURATION

When **BPO** is first installed, you will need to update the connection settings with your specific **SQL** server and database names. Contact the **CO3 Technologies Support Centre** (softwaredocs@co3.co.za) for these details.

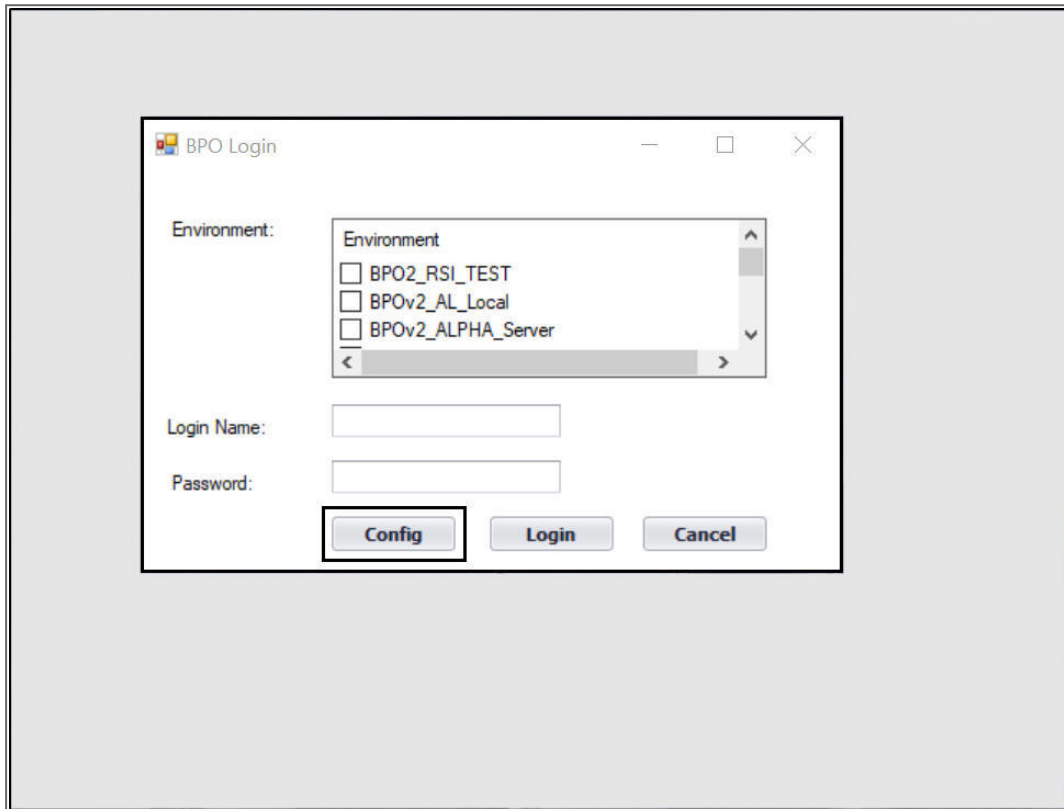
CONNECT BPO TO THE DATABASE

- Double click on the **BPO icon** on your computer.



BPO CONFIG

- The **BPO Login** screen will be displayed, if there are other environments already configured, these will also be displayed in this screen.
- Click on **Config**.

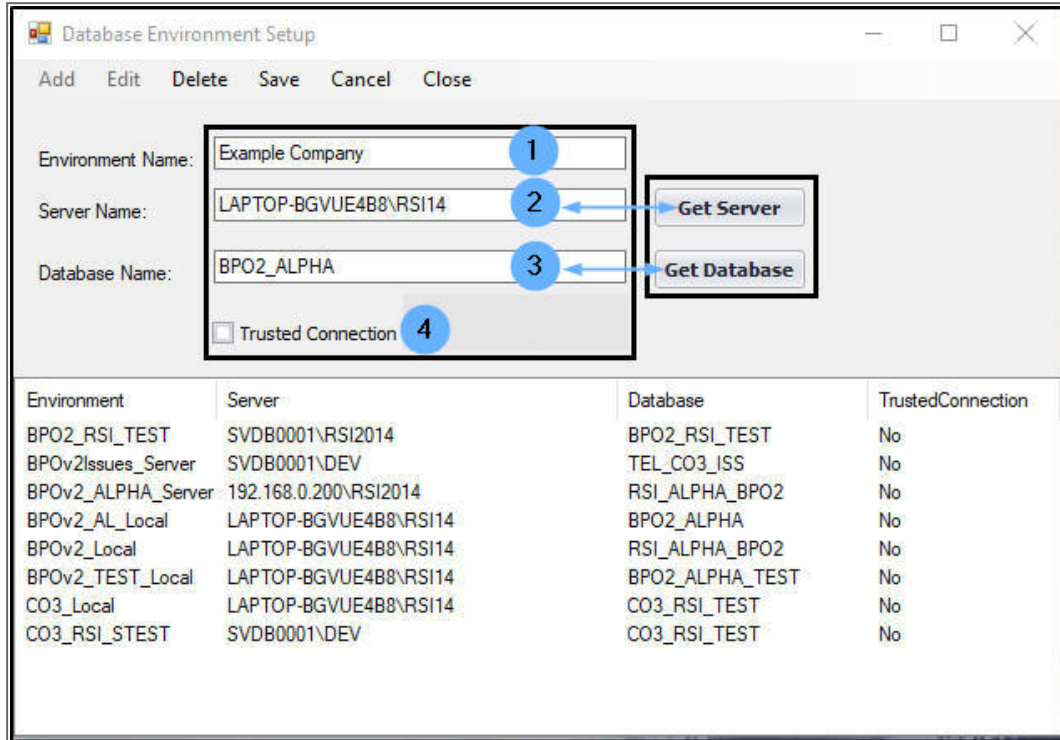


ENVIRONMENT SETUP DETAILS

The **Database Environment Setup** screen will be displayed.

1. Type in the correct **Environment Name**.
2. Type in the correct **Server Name** or click on **Get Server** and select the correct server.

3. Type in the correct **Database Name** or click on **Get Database** and select the correct database.
4. **Trusted connection** checkbox: Either tick or leave it un-ticked, as required.



Environment	Server	Database	TrustedConnection
BPO2_RSI_TEST	SVDB0001\RSI2014	BPO2_RSI_TEST	No
BPOv2Issues_Server	SVDB0001\DEV	TEL_CO3_ISS	No
BPOv2_ALPHA_Server	192.168.0.200\RSI2014	RSI_ALPHA_BPO2	No
BPOv2_AL_Local	LAPTOP-BGVUE4B8\RSI14	BPO2_ALPHA	No
BPOv2_Local	LAPTOP-BGVUE4B8\RSI14	RSI_ALPHA_BPO2	No
BPOv2_TEST_Local	LAPTOP-BGVUE4B8\RSI14	BPO2_ALPHA_TEST	No
CO3_Local	LAPTOP-BGVUE4B8\RSI14	CO3_RSI_TEST	No
CO3_RSI_STEST	SVDB0001\DEV	CO3_RSI_TEST	No

SAVE DETAILS

- Click on **Save**.

Database Environment Setup

Add Edit Delete **Save** Cancel Close

Environment Name:

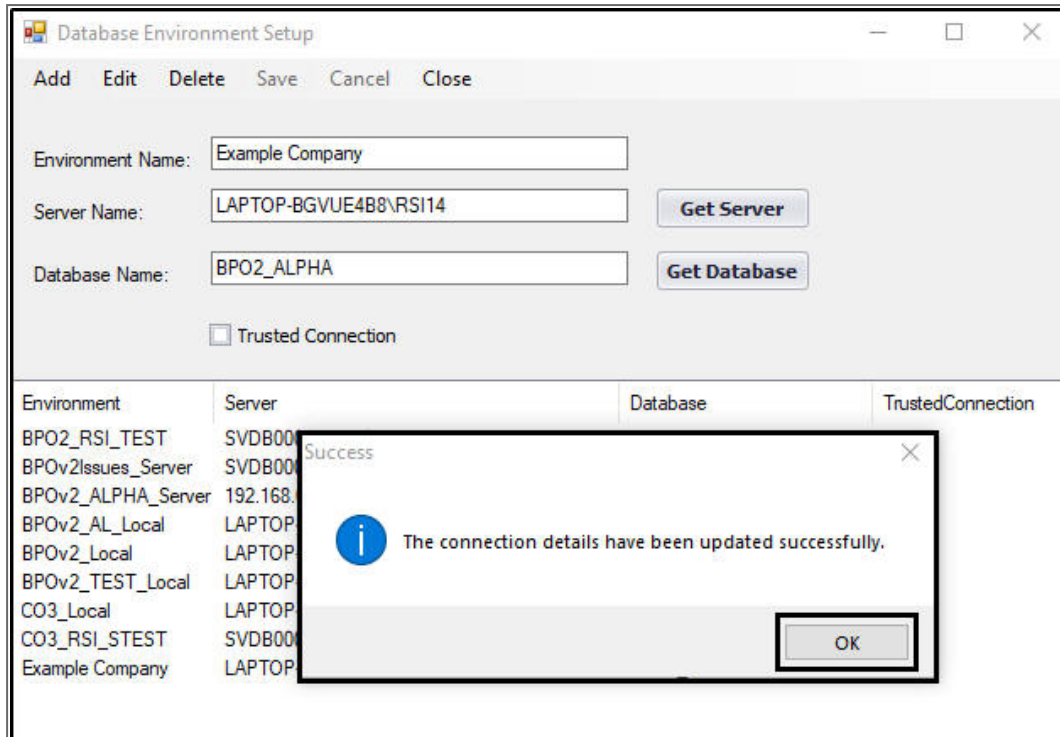
Server Name: Get Server

Database Name: Get Database

☐ Trusted Connection

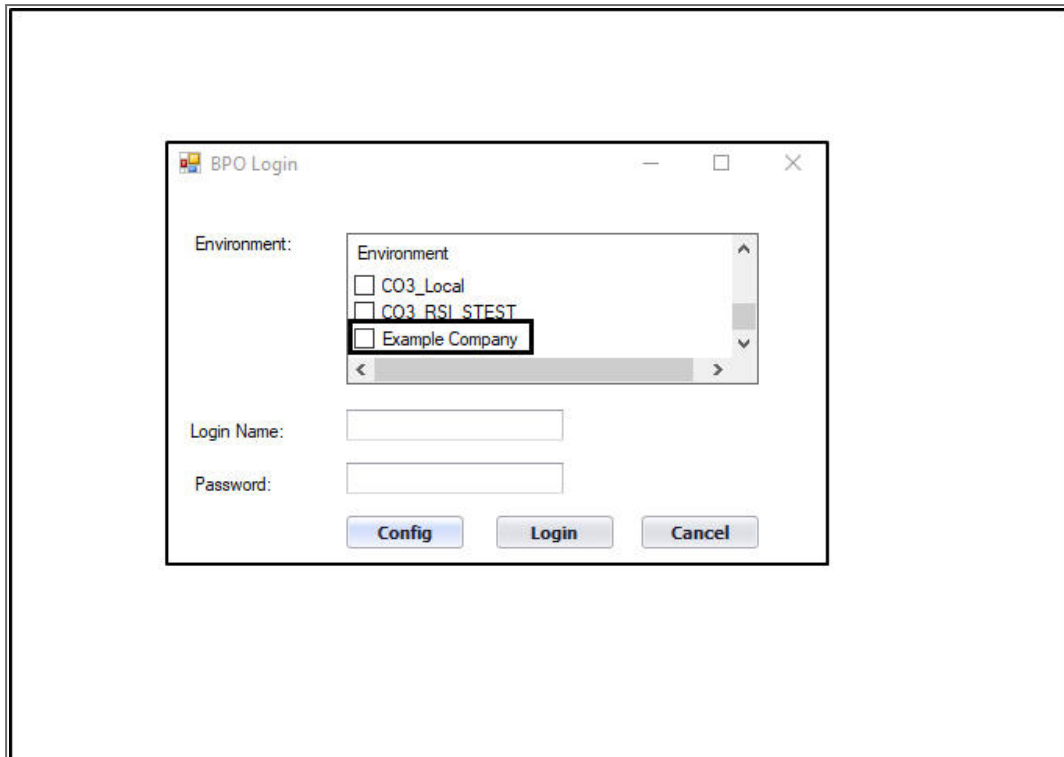
Environment	Server	Database	TrustedConnection
BPO2_RSI_TEST	SVDB0001\RSI2014	BPO2_RSI_TEST	No
BPOv2Issues_Server	SVDB0001\DEV	TEL_CO3_ISS	No
BPOv2_ALPHA_Server	192.168.0.200\RSI2014	RSI_ALPHA_BPO2	No
BPOv2_AL_Local	LAPTOP-BGVUE4B8\RSI14	BPO2_ALPHA	No
BPOv2_Local	LAPTOP-BGVUE4B8\RSI14	RSI_ALPHA_BPO2	No
BPOv2_TEST_Local	LAPTOP-BGVUE4B8\RSI14	BPO2_ALPHA_TEST	No
CO3_Local	LAPTOP-BGVUE4B8\RSI14	CO3_RSI_TEST	No
CO3_RSI_STEST	SVDB0001\DEV	CO3_RSI_TEST	No

- A **Success** message box will pop up informing you that;
 - *The connection details have been updated successfully.*
- Click on **Ok**.



VIEW NEW ENVIRONMENT

- The **Database Environment Setup** screen will close.
- The new environment added will be displayed in the **BPO Login** screen.
- In this image, **Example Company** has been added.



MNU.146.018