

PROJECTS

STANDARD METHODOLOGY – ADD MAIN LAYER

Using a Project Methodology, enables you to set up project *layers*. For instance you can set up a *main project*, with *sub-projects* and *work orders*.

You can assign *Labour*, *Parts* and *Sub-Contractors* per work order.

A Project Methodology can be applied to a *Sales Quote* or to a *current Project*.

When generating, the system will create the *main* project and *sub-projects*, as well as the *work orders*, and request the *assigned resources* as specified.

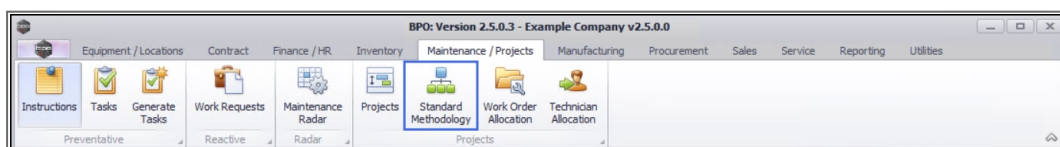
The following needs to be configured:

- **Project Methodology Class**
- Project Work Order specific Bill of Materials for parts required.



Note that the *Auto Apply Task Configuration to WO* [Company Configuration](#) flag must be set to *No*. Both these functionalities, cannot be used simultaneously.

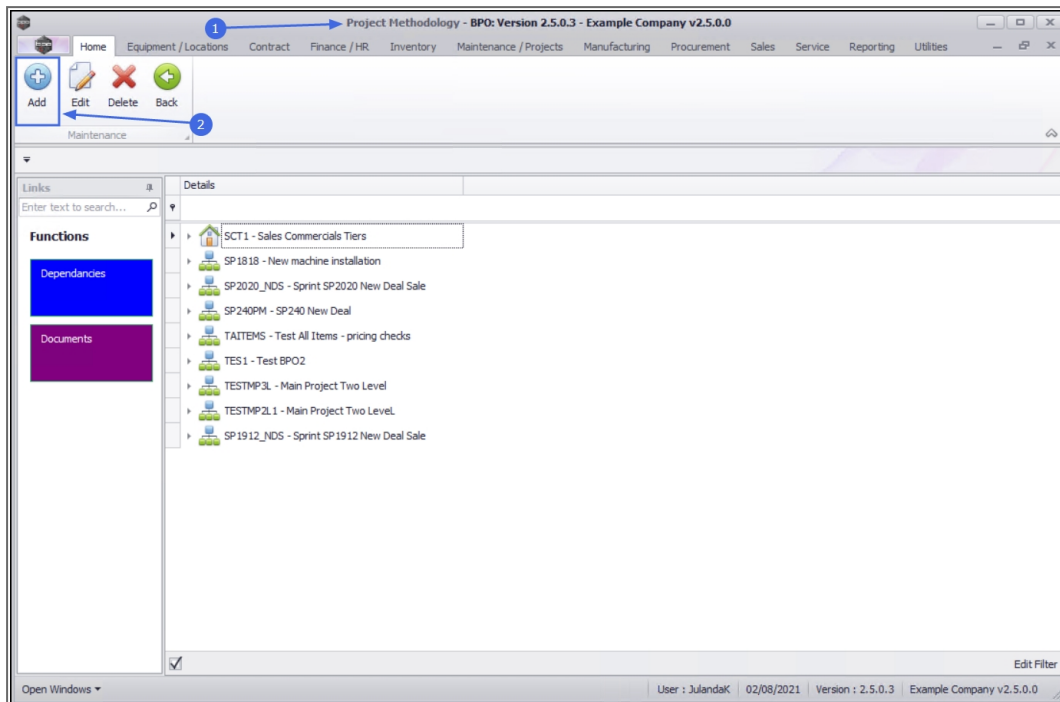
Ribbon Access: *Maintenance / Projects > Standard Methodology*



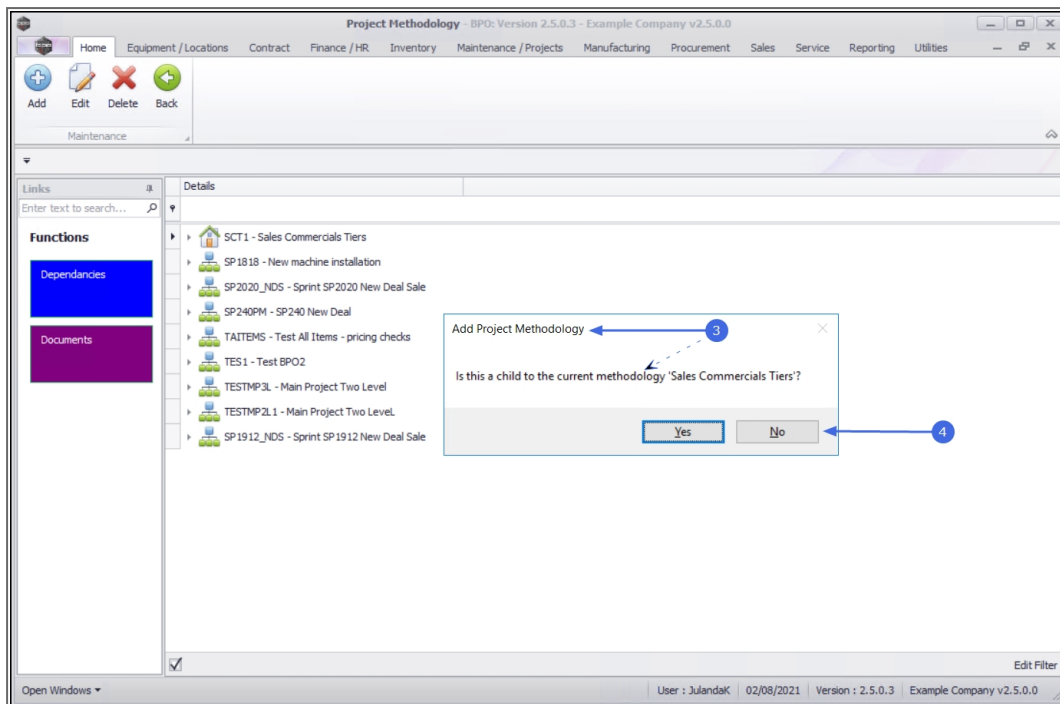
1. The **Project Methodology** screen will be displayed.
2. Click on **Add**.



Short cut key: **Right click** to display the **Maintenance** menu list. Click on **Add**.



3. When you receive the **Add Methodology** message requesting;
 - **Is this a child to the current methodology**
[methodology name]?
4. Click on **No** as this will be the **main** layer.



5. The **Project Methodology Maintain** screen will be displayed.

- **Number:** Type in the project number for the main methodology layer.
- **Description:** Type the description for the main methodology.
- **Parent:** There will be no parent, as this will be the main layer.
- **Order:** This is the order of the layers within the methodology.
- **Class:** Click on the down **arrow** to select the **methodology class** from the class menu options.
- **Start Lag (days):** Specify the number of **lag days**¹ required. For the main layer/project, the start lag is set to **0**.

¹Lag days refer to the number of days that needs to be waited out, before this layer within the methodology is due.

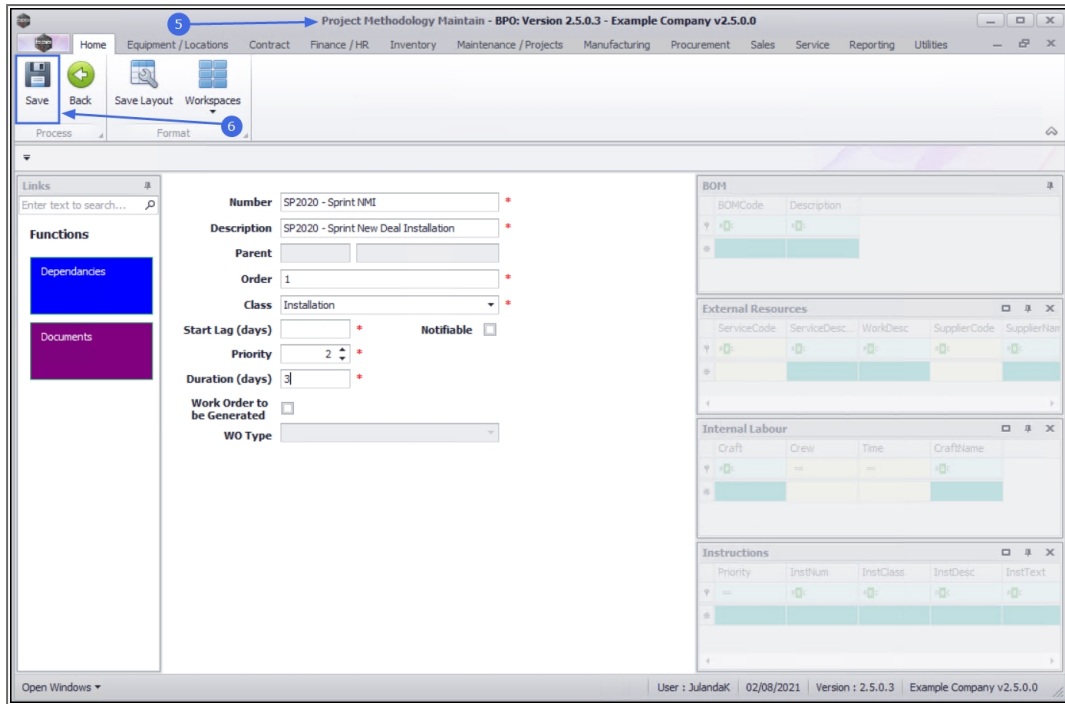
- **Notifiable:** Check this option if the project manager needs to be notified.



Note that this option is not used by the system. For notifications, assign the project work order(s) to a technician. If the company configuration is set up correctly, the technician will receive an email regarding the assignment.

- **Priority:** Select the **priority level**¹ for the methodology layer.
 - **Duration (days):** Specify how long (in days) this part of the methodology will take to complete. As this is the main layer, it needs to take into account the total number of days for the entire methodology.
 - **Work Order to be Generated:** This option is **not** selected for the main methodology layer, but when adding the sub, or sub-sub layers where the work orders normally are generated.
 - **WO Type:** This field can only be accessed when the **Work Order to be Generated** check box has been selected.
6. When you have finished entering the main layer details to the **Project Methodology Maintain** screen, click on **Save**.

¹ 1 - Very High 2 - High 3 - Moderate 4 - Low 5 - Very Low



Project Methodology Maintain - BPO: Version 2.5.0.3 - Example Company v2.5.0.0

Save Back Save Layout Workspaces

Process Format

Links
Enter text to search...

Functions
Dependencies
Documents

Number SP2020 - Sprint NME
Description SP2020 - Sprint New Deal Installation
Parent
Order 1
Class Installation
Start Lag (days)
Priority 2
Duration (days) 3
Work Order to be Generated
W0 Type

Notifiable

BOM

BOMCode	Description

External Resources

ServiceCode	ServiceDesc	WorkDesc	SupplierCode	SupplierName

Internal Labour

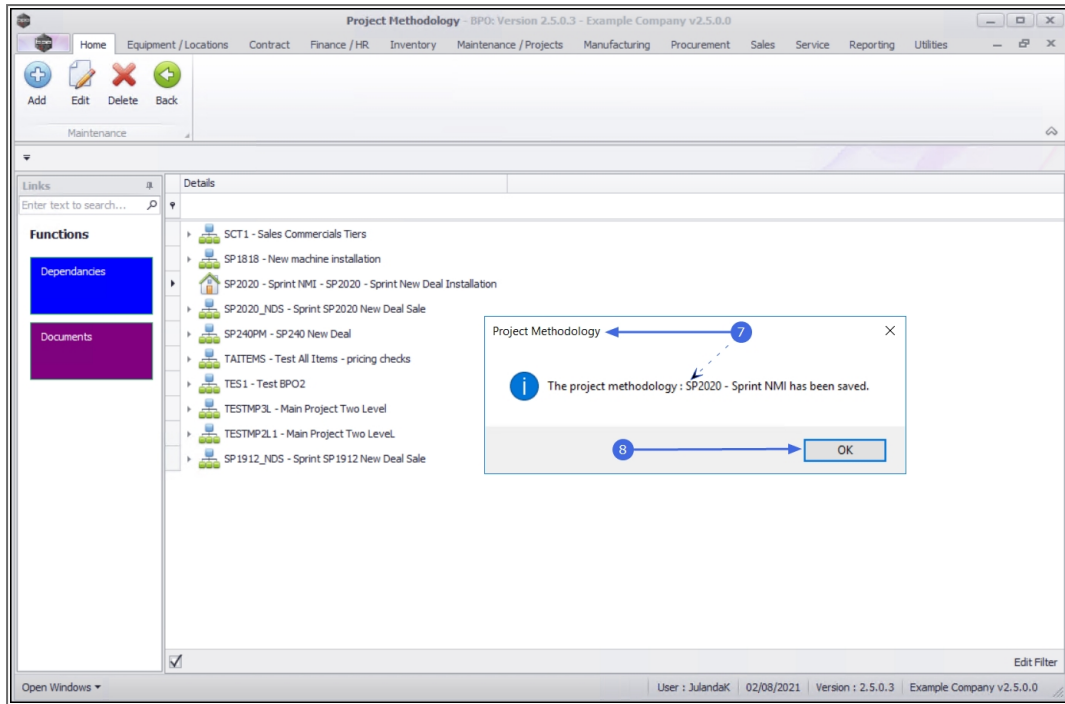
Craft	Crew	Time	CraftName

Instructions

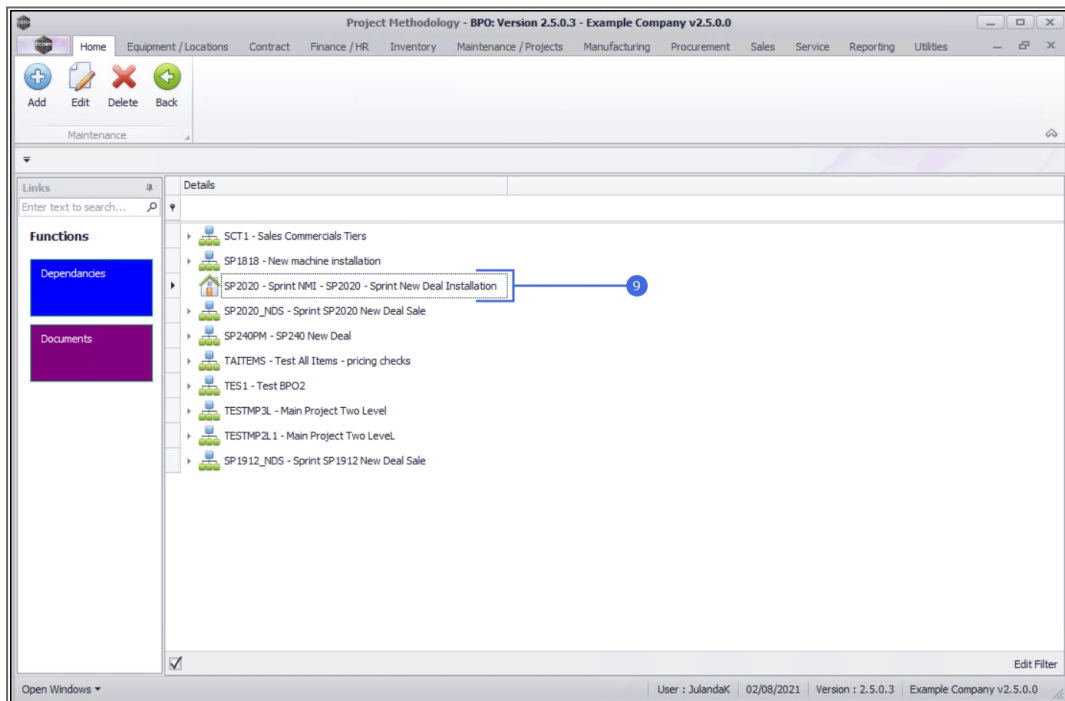
Priority	InstNum	InstClass	InstDesc	InstText

User : JulandaK 02/08/2021 Version : 2.5.0.3 Example Company v2.5.0.0

7. When you receive the **Project Methodology** message to confirm;
 - **The Project Methodology: [methodology name] has been saved.**
8. Click on **OK**.



9. The **Project Methodology** Listing screen has been updated with the main project methodology level you have created.



Related Topics

- [Project Methodology Sub Layers](#)
- [Link a Bill of Materials \(BOM\)](#)
- [Link External Resources](#)
- [Link Internal Labour](#)
- [Assign an Instruction](#)

MNU.153.0011

