

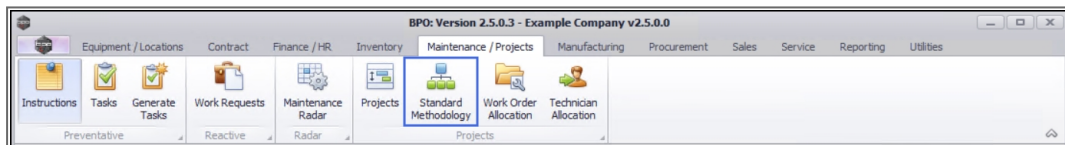
PROJECTS

STANDARD METHODOLOGY – LINK A BILL OF MATERIALS

A Bill of Materials can be linked to either a Main or Sub-layer where the Work Order to be Generated has been selected.

For the purpose of this manual, the Bill of Materials (BOM) has been linked using the **Edit** function on the **Project Maintenance** screen, but can also be linked when creating the project.

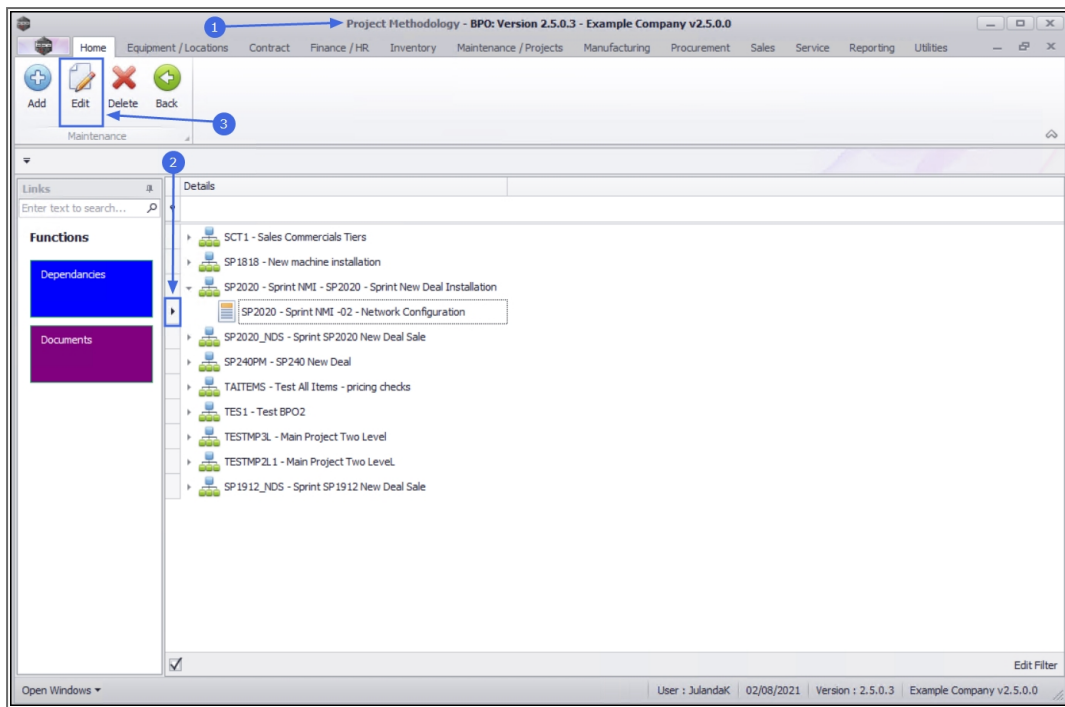
Ribbon Access: *Maintenance / Projects > Standard Methodology*




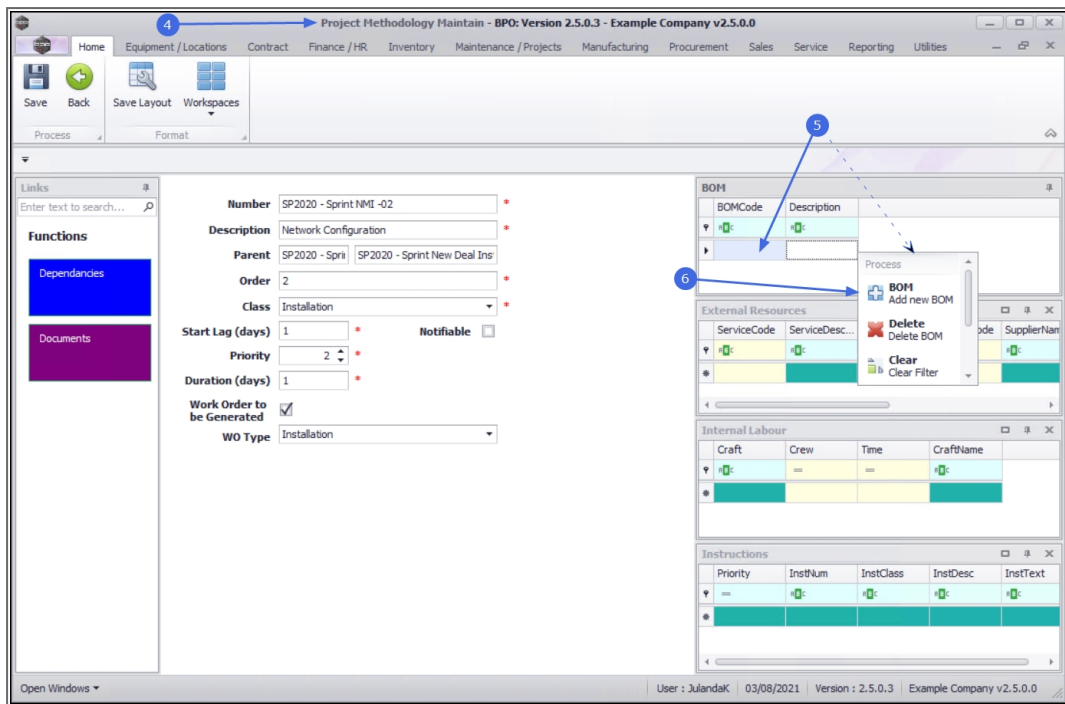
1. The **Project Methodology** screen will be displayed.
2. Click on the **row** of the **methodology layer** that you wish to **link** a **Bill of Materials (BOM)** to.
3. Click on **Edit**.



Short cut key: **Right click** to display the **Maintenance** menu list. Click on **Edit**.



4. The **Project Methodology Maintain** screen will be displayed.
5.  **Right click** on the next available row on the **Bill of Materials** frame to display the **Process** menu.
6. Click on **Add** - Add new BOM.



Project Methodology Maintain - BPO: Version 2.5.0.3 - Example Company v2.5.0.0

Home Equipment / Locations Contract Finance / HR Inventory Maintenance / Projects Manufacturing Procurement Sales Service Reporting Utilities

Save Back Save Layout Workspaces

Process Format

Links

Enter text to search...

Functions

Dependencies

Documents

Number SP2020 - Sprint NMI -02

Description Network Configuration

Parent SP2020 - Spr SP2020 - Sprint New Deal Ins

Order 2

Class Installation

Start Lag (days) 1

Priority 2

Duration (days) 1

Work Order to be Generated ☒

WO Type Installation

BOM

BOMCode Description

Process

BOM1 Add new BOM

Delete BOM

Clear Filter

External Resources

ServiceCode ServiceDesc

Internal Labour

Craft Crew Time CraftName

Instructions

Priority InstNum InstClass InstDesc InstText

User : JulandaK 03/08/2021 Version : 2.5.0.3 Example Company v2.5.0.0

7. The **Select a BOM** screen will be displayed.
8. Click on the **row** of the **BOM** you wish to **assign** to this **project methodology layer**.
9. Click on **OK**.

Project Methodology Maintain - BPO: Version 2.5.0.3 - Example Company v2.5.0.0

Home Equipment / Locations Contract Finance / HR Inventory Maintenance / Projects Manufacturing Procurement Sales Service Reporting Utilities

Save Back Save Layout Workspaces

Process Format

Links
Enter text to search...

Functions
Dependencies
Documents

Number SP2020 - Sprint NMI -02
Description Network Configuration
Parent SP2020 - Spr... SP2020 - Sprint New Deal Ins
Order 2
Class Installation

Select a BOM

Home
Ok Back Save Layout
Process Format

Drag a column header here to group by that column

BOMCode	Description	BOMType	BOMTypeDesc
22 SP204	SP204 Copier Part List	PARTS	Part List
12 SP204ND	SP204 New Deal	PM	Project Methodology
23 SP500	SP500 Copier Part List	PARTS	Part List
10 SP1912PMNet	Sprint 1912 PM Installation...	PM	Project Methodology
11 SP2020PM1	Sprint 2020 PM Machine I...	PM	Project Methodology
2 TONERS	Toners Included	CI	Contract Inclusion

Open Windows

User : JulandaK 02/08/2021 Version : 2.5.0.3 Example Company v2.5.0.0

10. The selected **BOM** will be added to the **Bill Of Materials** frame.

11. Click on **Save** to update the Project Methodology screen.

Project Methodology Maintain - BPO: Version 2.5.0.3 - Example Company v2.5.0.0

Home Equipment / Locations Contract Finance / HR Inventory Maintenance / Projects Manufacturing Procurement Sales Service Reporting Utilities

Save Back Save Layout Workspaces

Process Format

Links
Enter text to search...

Functions
Dependencies
Documents

Number SP2020 - Sprint NMI -02
Description Network Configuration
Parent SP2020 - Spr... SP2020 - Sprint New Deal Ins
Order 2
Class Installation
Start Lag (days) 1
Priority 2
Duration (days) 1
Work Order to be Generated ☒
WO Type Installation

BOM

BOMCode	Description
SP2020PM1	Sprint 2020 PM Machine Installation

External Resources

ServiceCode	ServiceDesc...	WorkDesc	SupplierCode	SupplierNam

Internal Labour

Craft	Crew	Time	CraftName

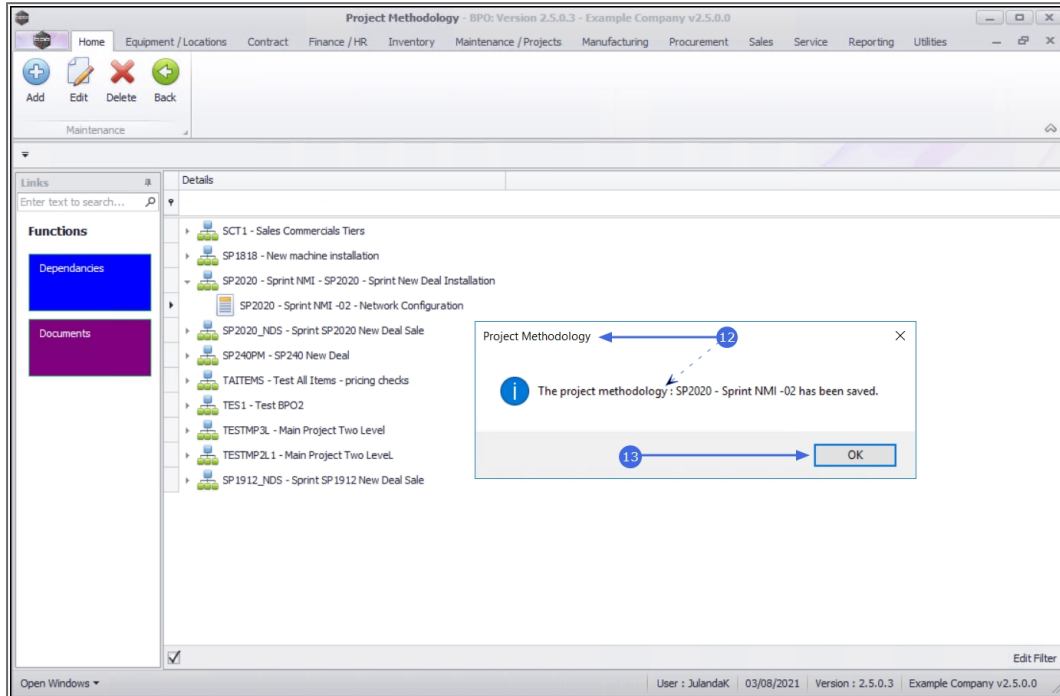
Instructions

Priority	InstNum	InstClass	InstDesc	InstText

Open Windows

User : JulandaK 03/08/2021 Version : 2.5.0.3 Example Company v2.5.0.0

12. When you receive the **Project Methodology** message;
 - **The project methodology : [methodology name] has been saved.**
13. Click on **OK**.



Related Topics

- [Remove Bill of Materials \(BOM\)](#)

MNU.153.003

