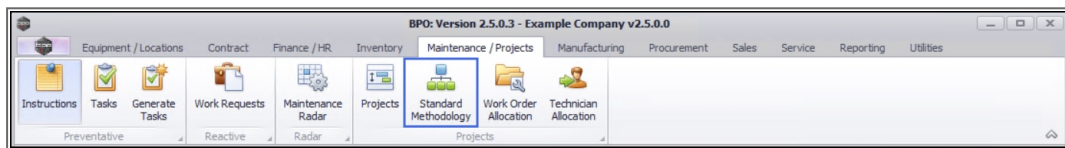


# PROJECTS

## STANDARD METHODOLOGY - LINK WORK INSTRUCTION(S)

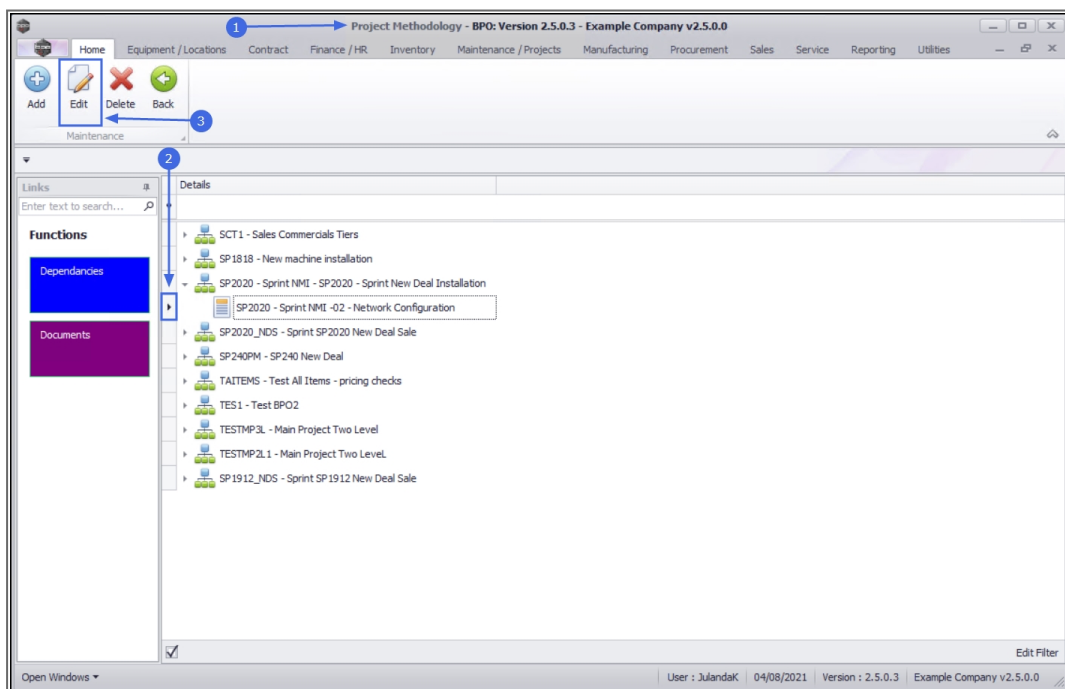
**Ribbon Access:** *Maintenance / Projects > Standard Methodology*




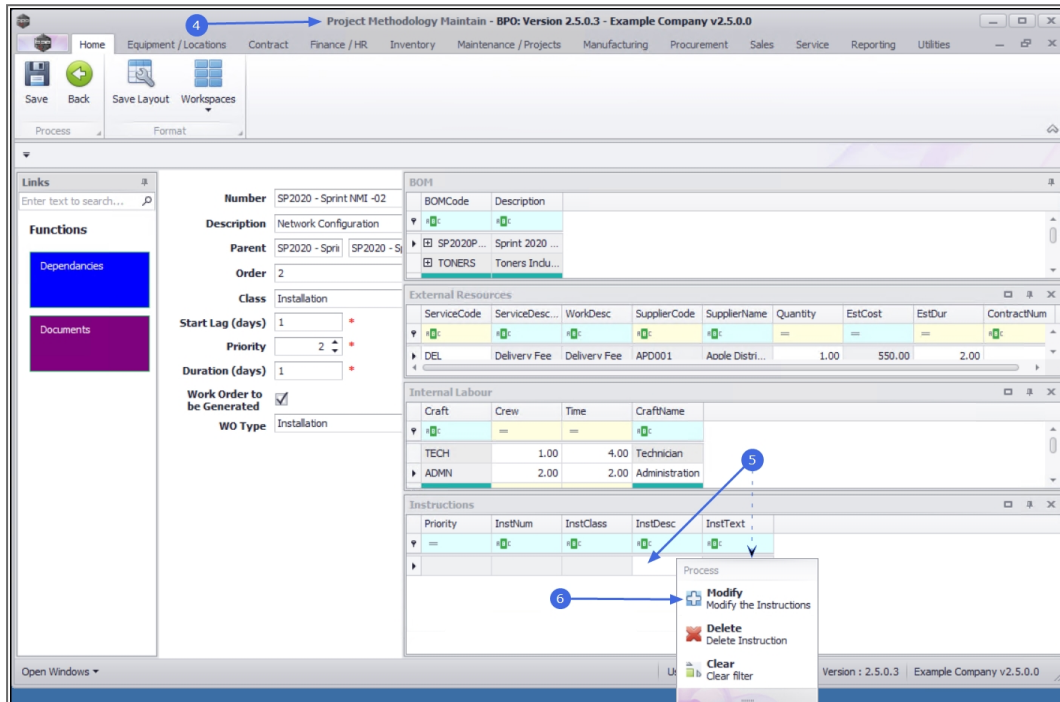
1. The **Project Methodology** screen will be displayed.
2. Click on the **row** of the **methodology layer** that you wish to link a **Work Instruction** to.
3. Click on **Edit**.



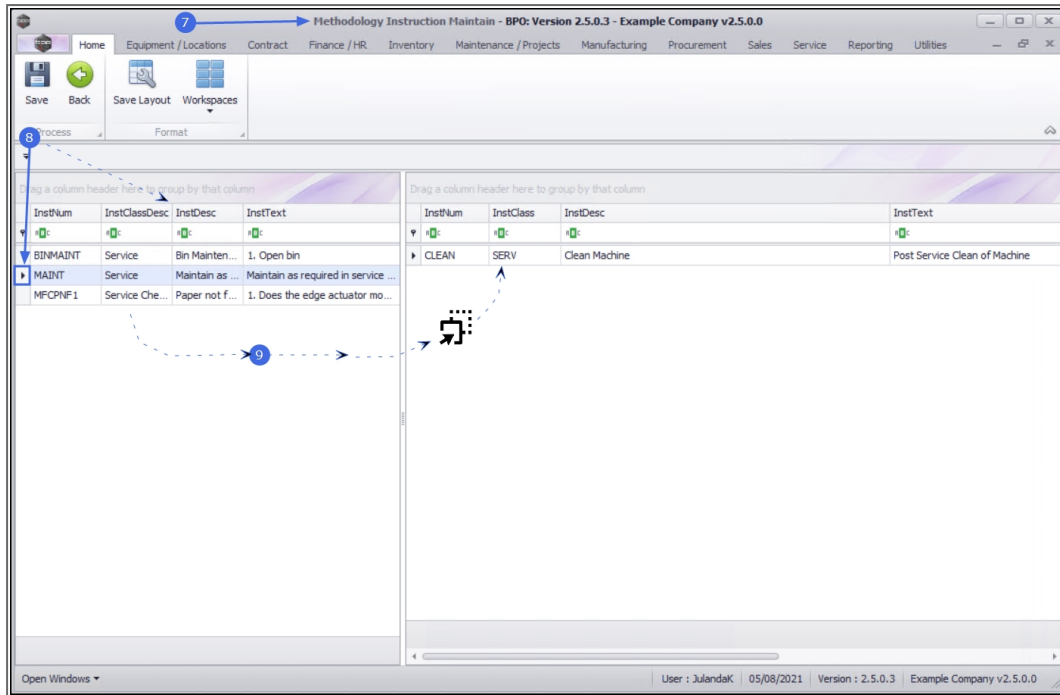
Short cut key: **Right click** to display the **Maintenance** menu list. Click on **Edit**.



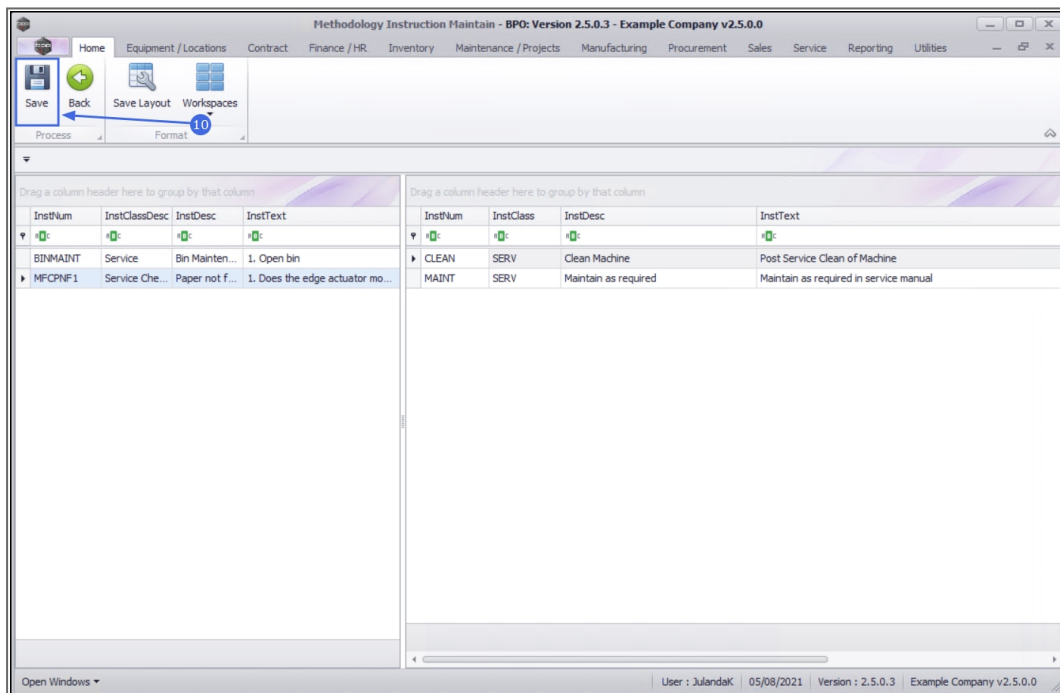
4. The **Project Methodology Maintain** screen will be displayed.
5.  **Right Click** in an available row of the **Internal Labour** frame to display the **Process** menu.
6. Click on **Modify** - Modify the Instructions.



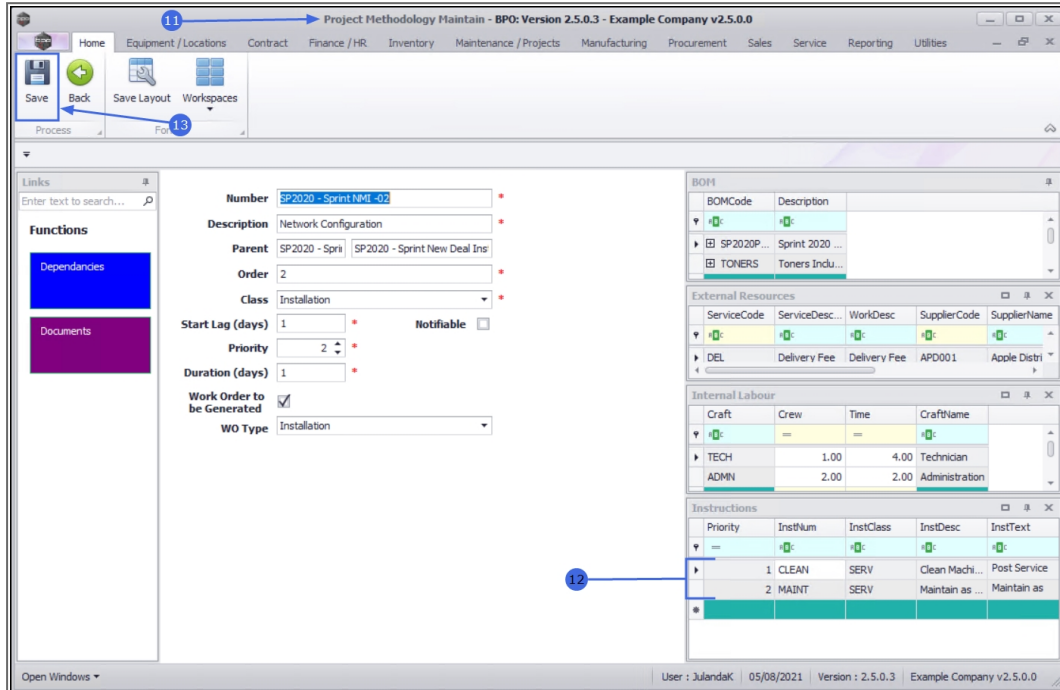
7. The **Methodology Instructions Maintain** screen will be displayed.
8. Click on the **row** selector of the Instruction on the left hand panel, you wish to **link** to this methodology.
9. **Drag and drop** the selected instruction onto the right hand panel.



10. When you have finished linking all the instructions to the **Methodology Instruction Maintain** screen, click on **Save**.



11. You will return to the **Project Methodology Instructions** screen.
12. The Instructions frame has been updated with the Instructions you have selected.
13. Click on **Save** to update the Project Methodology.



Project Methodology Maintain - BPO: Version 2.5.0.3 - Example Company v2.5.0.0

Home Equipment / Locations Contract Finance / HR Inventory Maintenance / Projects Manufacturing Procurement Sales Service Reporting Utilities

Save Back Save Layout Workspaces

Links  
Enter text to search...

Functions  
Dependencies  
Documents

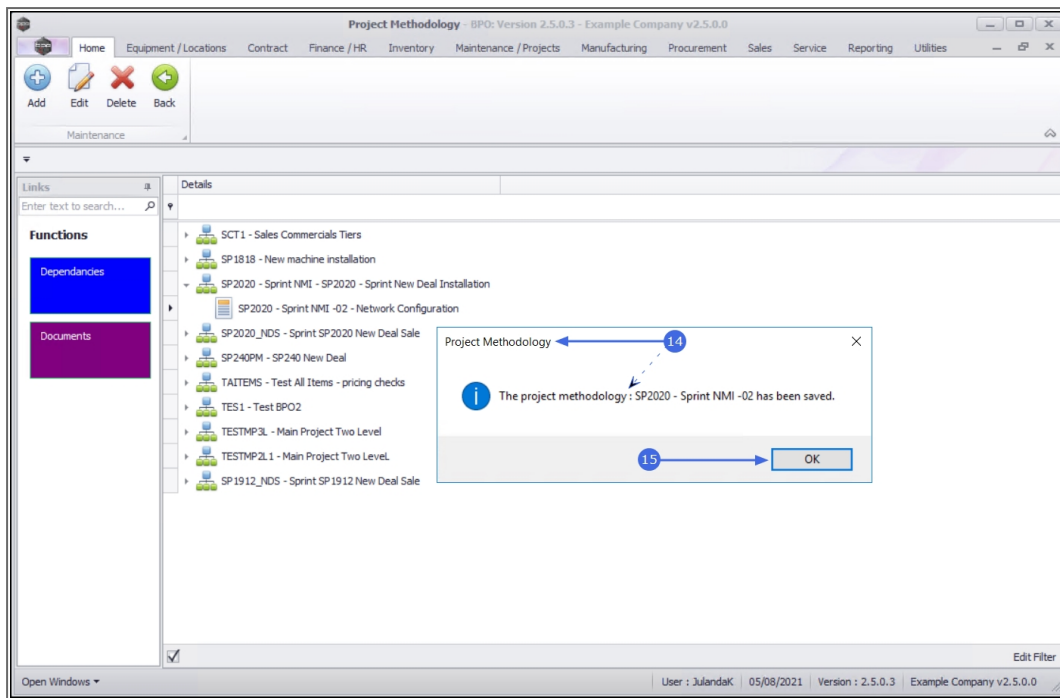
Number: SP2020 - Sprint NMI-02  
Description: Network Configuration  
Parent: SP2020 - Sprn | SP2020 - Sprint New Deal Ins  
Order: 2  
Class: Installation  
Start Lag (days): 1  
Priority: 2  
Duration (days): 1  
Work Order to be Generated: ☒  
WO Type: Installation

Instructions

Priority	InstNum	InstClass	InstDesc	InstText
1	CLEAN	SERV	Clean Machi...	Post Service
2	MAINT	SERV	Maintain as ...	Maintain as

User: JulandaK | 05/08/2021 | Version: 2.5.0.3 | Example Company v2.5.0.0

14. When you receive the **Project Methodology** screen to confirm that;
  - **The project methodology : [methodology name] has been saved.**
15. Click on **OK**.



## Related Topics

- [Remove Linked Instruction](#)

MNU.153.007

