

SALES STUDIO CONFIGURATION

EDIT A PAYMENT FACTOR

Quotes created in Sales Studio can have one or more payment options based on **Payment Factors** that have been created.

These Payment Factors are used to calculate monthly **repayments** for the quote payment options.

When printing, each Payment Option will print on a new page, as if it were a separate quote, allowing the customer to choose the option they wish to accept.

Each payment option has a **default** Payment Factor.

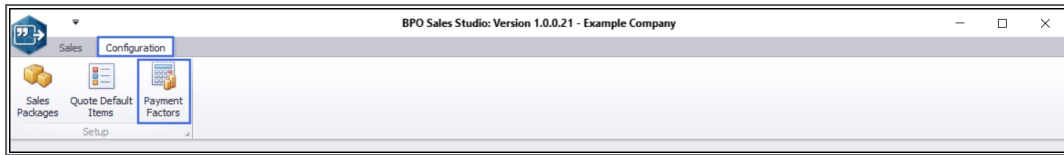
Adding an item to a quote also adds item price options for each quote Payment Option and if *more* options are added corresponding item price options are automatically added based on the Payment Option's default Payment Factor.

Follow the process set out below to **edit** a Payment Factor.

Version Compatibility

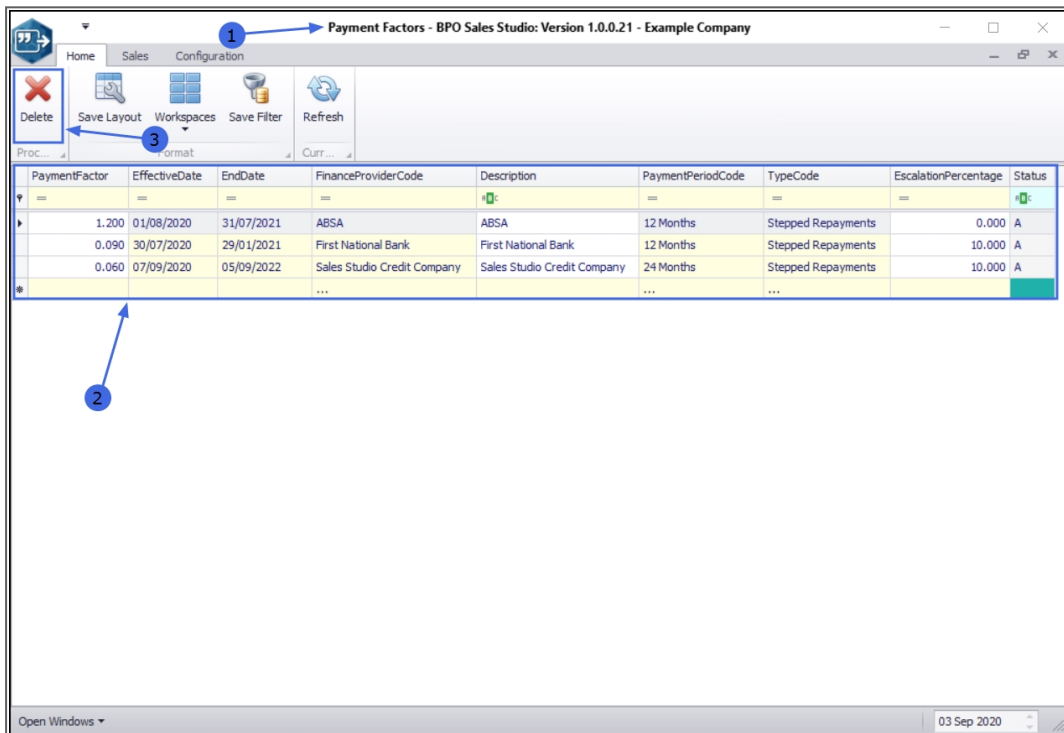
- BPO2 v 2.3.0.2
- Sales Studio v 1.0.0.21
- Configurator v 2.2.0.0
- CRM v 3.5.7.5

Ribbon Access: *Sales Studio > Configuration > Payment Factors*



THE PAYMENT FACTORS LISTING SCREEN

1. The **Payment Factors** listing screen will open.
2. This screen contains a data grid of all the Payment Factors currently set up on the system.
3. There is only **1** Processing button in this screen: **Delete**, which will be covered in the [Delete Payment Factors](#) manual.



GENERAL BPO2 INTERFACE FUNCTIONALITY

The following basic BPO2 functionality applies in this screen:

1. Format:

- [Save Layout](#)
- [Workspaces](#)
- [Save Filter](#)

2. Current:

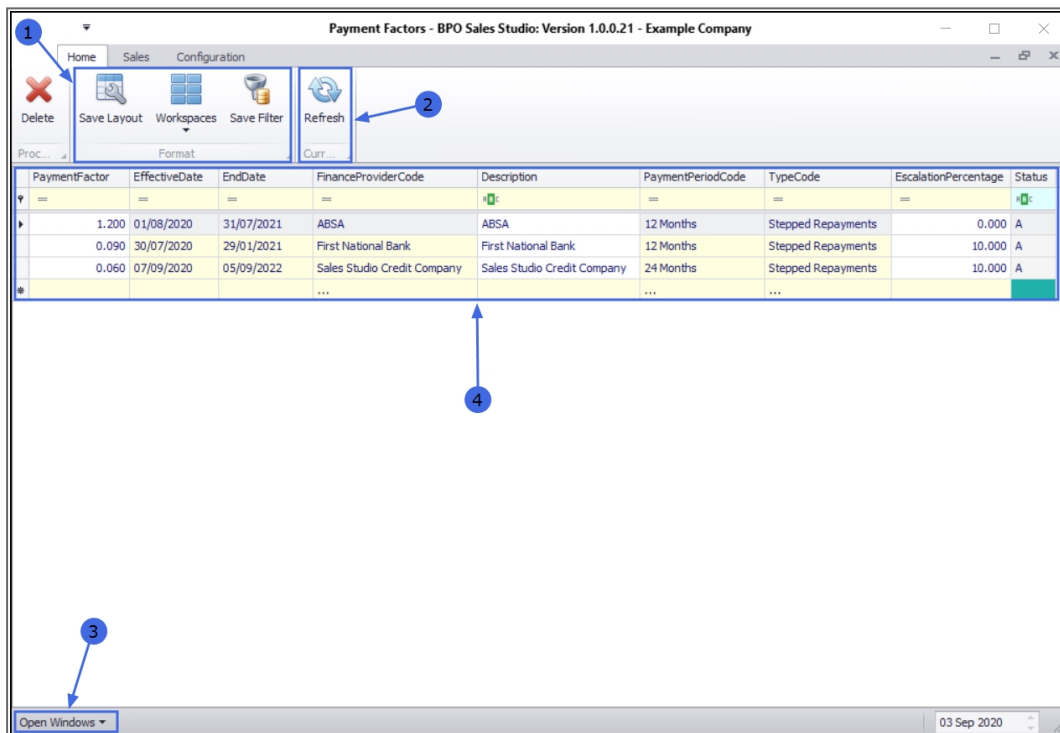
- Refresh: Clicking on this button will update the currently displayed page.

3. Open Windows:

- [Open Windows](#)

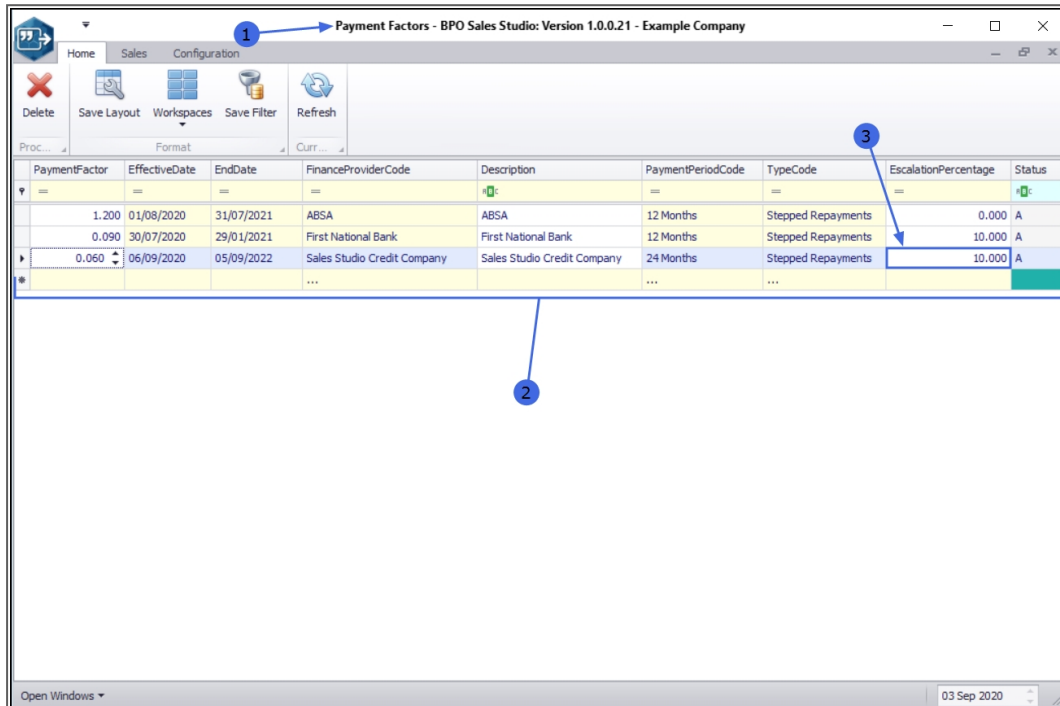
4. Data Grids:

- Refer to [Using BPO Data Grids](#) and [Data Grid Filtering](#) for further information regarding data grid functionality that can be utilised here.



SELECT THE PAYMENT FACTOR TO BE EDITED

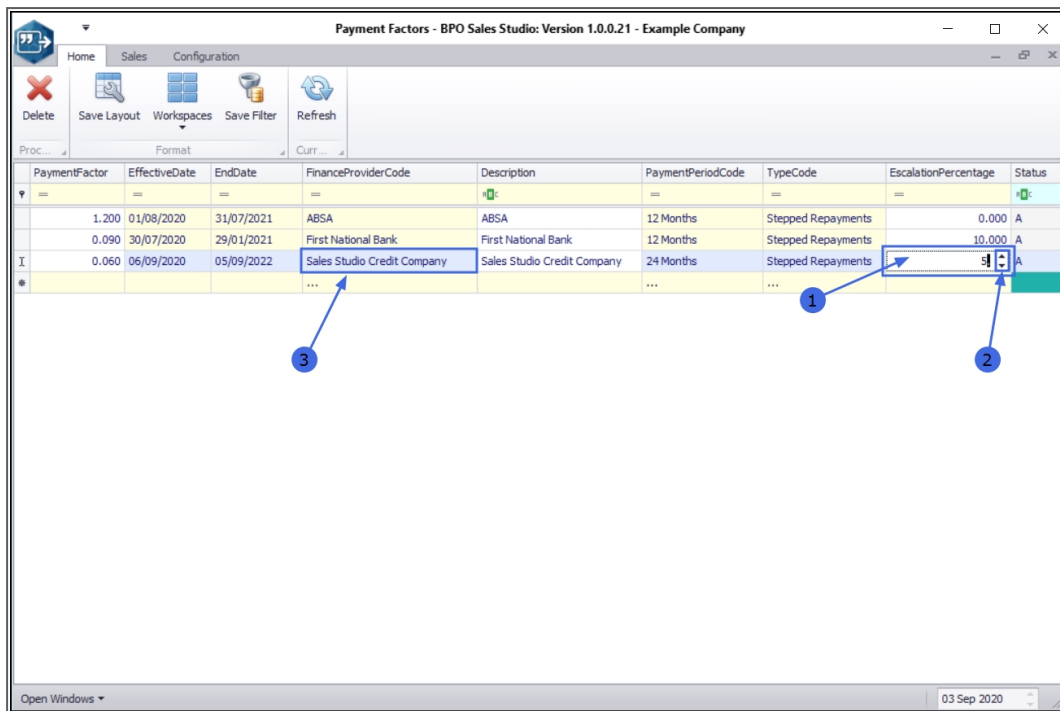
1. In the **Payment Factors** listing screen,
2. Select the **field** in the data grid that you wish to edit.
3. In this example, the **Escalation Percentage** is selected.



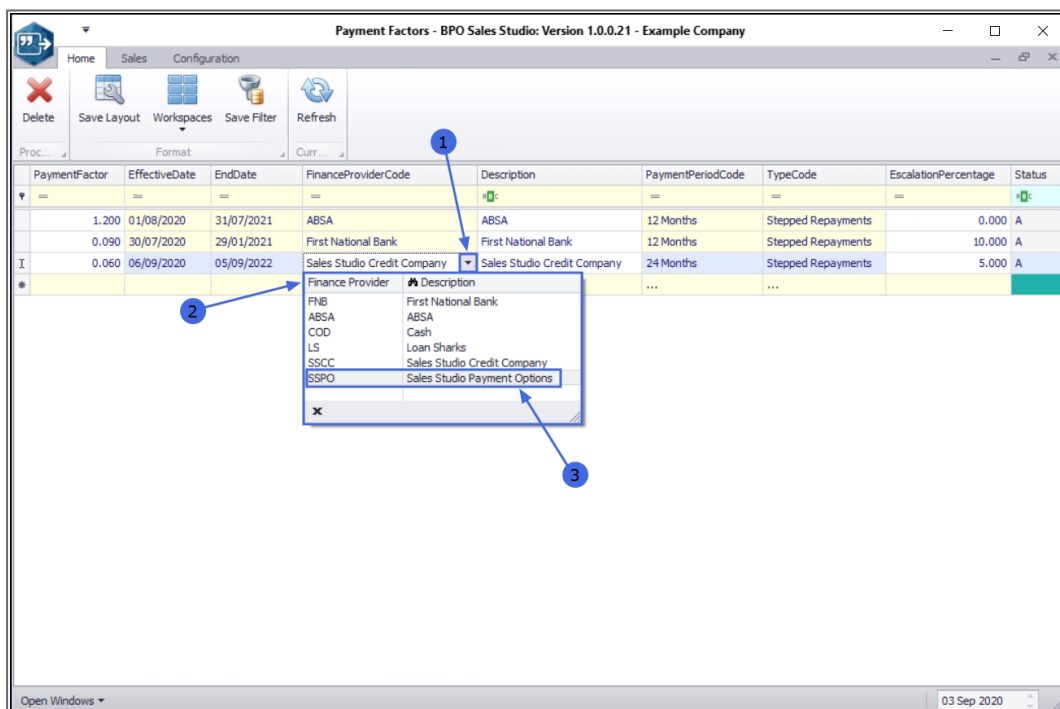
PaymentFactor	EffectiveDate	EndDate	FinanceProviderCode	Description	PaymentPeriodCode	TypeCode	EscalationPercentage	Status
1.200	01/08/2020	31/07/2021	ABSA	ABSA	12 Months	Stepped Repayments	0.000	A
0.090	30/07/2020	29/01/2021	First National Bank	First National Bank	12 Months	Stepped Repayments	10.000	A
0.060	06/09/2020	05/09/2022	Sales Studio Credit Company	Sales Studio Credit Company	24 Months	Stepped Repayments	10.000	A

EDIT THE SELECTED PAYMENT FACTOR

1. Either **type in** or,
2. Use the directional **arrows** to edit the Percentage amount, as required.
3. Some fields may necessitate selection from a drop-down **list**, in order to edit them. In this example, the **Finance Provider Code** field has been selected.



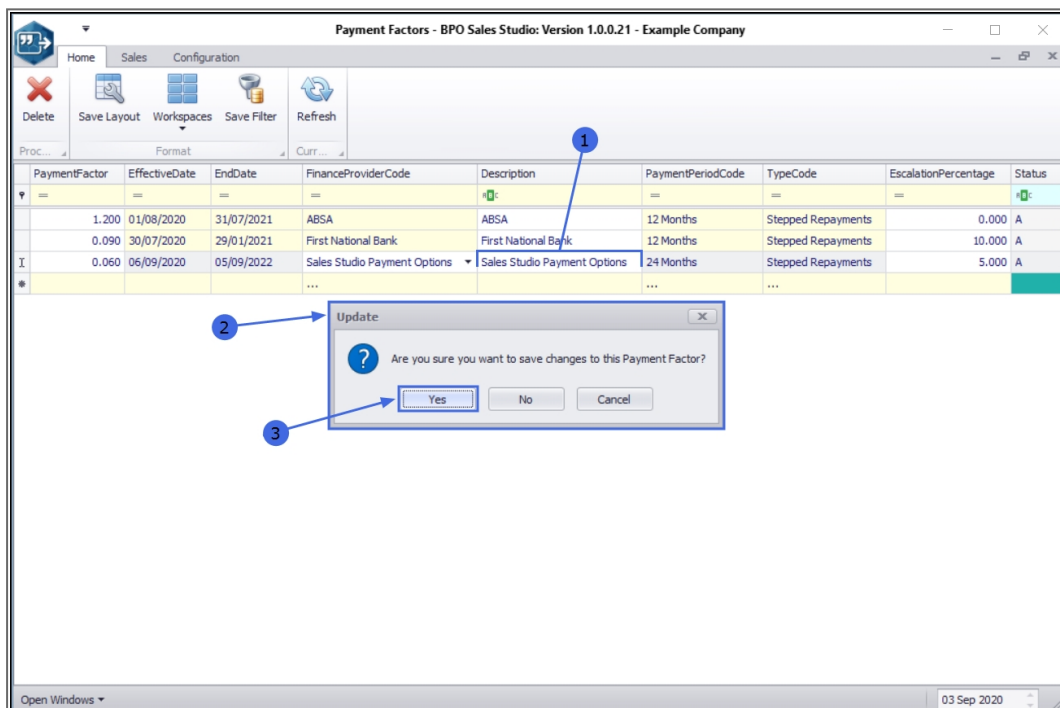
1. A drop-down **arrow** will appear. Click on the arrow to display
2. the Finance Provider Code drop-down **list**.
3. Select from this list, an alternative code.



1. In this example, the **Description** field will auto update to match the edited Code.

SAVE THE EDITED PAYMENT FACTOR WHEN YOU HAVE FINISHED EDITING THE PAYMENT FACTOR DETAILS, EITHER PRESS *TAB* OR *ENTER* ON YOUR KEYBOARD OR *CLICK OUTSIDE OF THE DATA GRID*.

2. An **Update** message box will pop up, asking;
 - **Are you sure you want to save changes to this Payment Factor?**
3. Click on **Yes**.



1. The edited details will be **saved**.
2. **Exit** the screen when you are done.

Payment Factors - BPO Sales Studio: Version 1.0.0.21 - Example Company

Home Sales Configuration

Delete Save Layout Workspaces Save Filter Refresh

Proc... Format Curr...

PaymentFactor	EffectiveDate	EndDate	FinanceProviderCode	Description	PaymentPeriodCode	TypeCode	EscalationPercentage	Status
=	=	=	=	+	=	=	=	+
1.200	01/08/2020	31/07/2021	ABSA	ABSA	12 Months	Stepped Repayments	0.000	A
0.090	30/07/2020	29/01/2021	First National Bank	First National Bank	12 Months	Stepped Repayments	10.000	A
0.060	06/09/2020	05/09/2022	Sales Studio Payment Options	Sales Studio Payment Options	24 Months	Stepped Repayments	5.000	A
*					

Open Windows 03 Sep 2020

Diagram illustrating the flow of data from the table to the edit function:

```

graph TD
    A[1] --> B[2]
    A --> C[Edit Function]
    
```

MNU.167.003

