

# SALES STUDIO QUOTES

## ADD ITEM METERS

All quotes created in Sales Studio can be found in the **Sales Quotes** listing screen after selecting the applicable **Site** and **Status**.

Follow the process set out below to *add Item Meters* to a quote in the system.

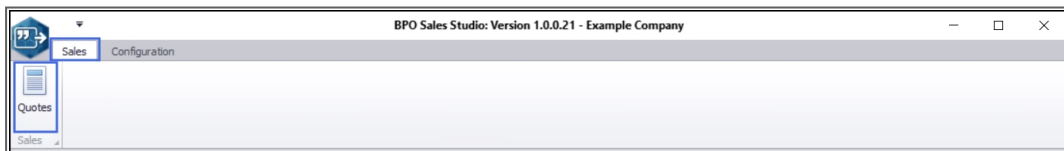
### Version Compatibility

- BPO2 v 2.3.0.2
- Sales Studio v 1.0.0.21
- Configurator v 2.2.0.0
- CRM v 3.5.7.5

---

**Ribbon Access:** *Sales Studio > Sales > Quotes*

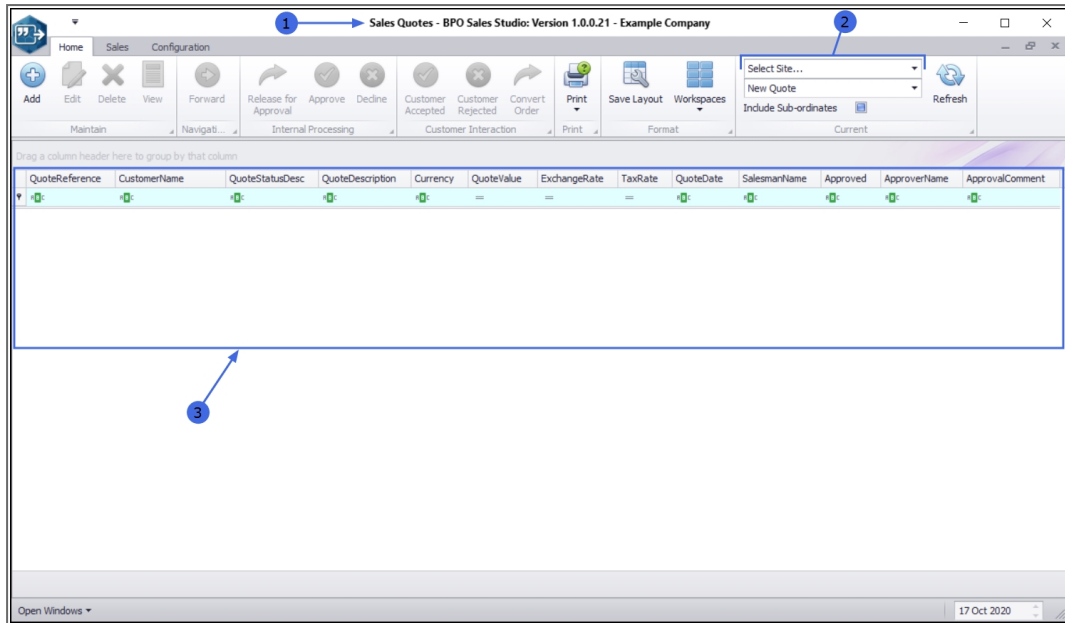
---



## SELECT THE SITE AND STATUS

---

1. The **Sales Quotes** listing screen will open.
2. The relevant **Site** will need to be selected,
3. before quotes will be displayed in the data grid.



1. Click on the drop-down arrow in the **Site** field to display the **Site Name** menu.
2. Select from the list the particular site that contains the quote that you wish to link **Item Meters** to.

**Note 1:** If you are **creating a new quote**, in which you will include Item Meters, you do not need to select the **Status** first.

**Note 2:** Only quotes in Status: '**New Quote**' or '**Salesman Released Quote**' can have Item Meters added to them.

## GENERAL BPO2 INTERFACE FUNCTIONALITY

The following basic BPO2 functionality applies in this screen:

1. **Format:**
  - [Save Layout](#)
  - [Workspaces](#)
  - [Save Filter](#)
2. **Current:**

- ***Refresh***: Clicking on this button will update the currently displayed page.
3. **Open Windows:**
    - [Open Windows](#)
  4. **Data Grids:**
    - Refer to [Using BPO Data Grids](#) and [Data Grid Filtering](#) for further information regarding data grid functionality that can be utilised here.

MNU.168.008

