

BPO2

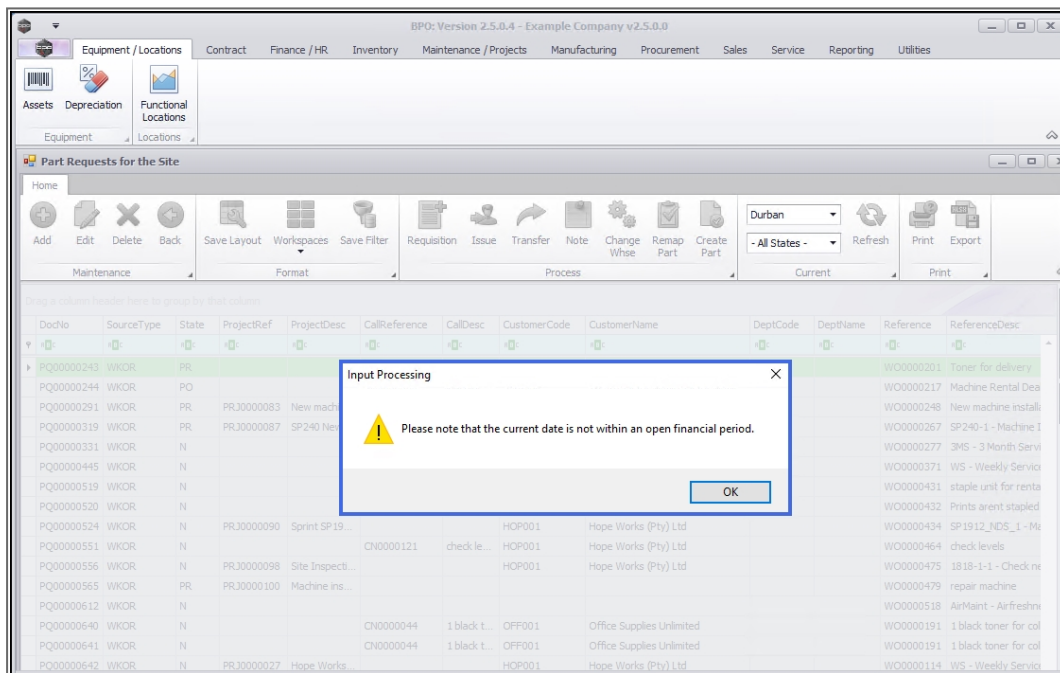
'PLEASE NOTE THAT THE CURRENT DATE IS NOT WITHIN AN OPEN FINANCIAL PERIOD.'

When trying to open a Maintain screen, to *add* or *edit* data the following error message may pop up:

Input Processing



Please note that the current date is not within an open financial period.



This is because the financial period that contains the selected data is closed. For a detailed handling of this topic refer to [Finance - Set Current Financial Period](#).

Fix

- i. Click on **OK** to remove the error message.
- ii. Click on **Back** return to the previous screen.
- iii. Select the **Finance/HR** ribbon tab.
- iv. Select **Financial Periods**.
- v. Follow the process to [open the financial period](#) that you wish to work in.

ST.000.005