

We are currently updating our site; thank you for your patience.

INSTALLATION AND CONFIGURATION

CONFIGURING BPO2 FOR LOGIN VIA MICROSOFT ACTIVE DIRECTORY DOMAIN

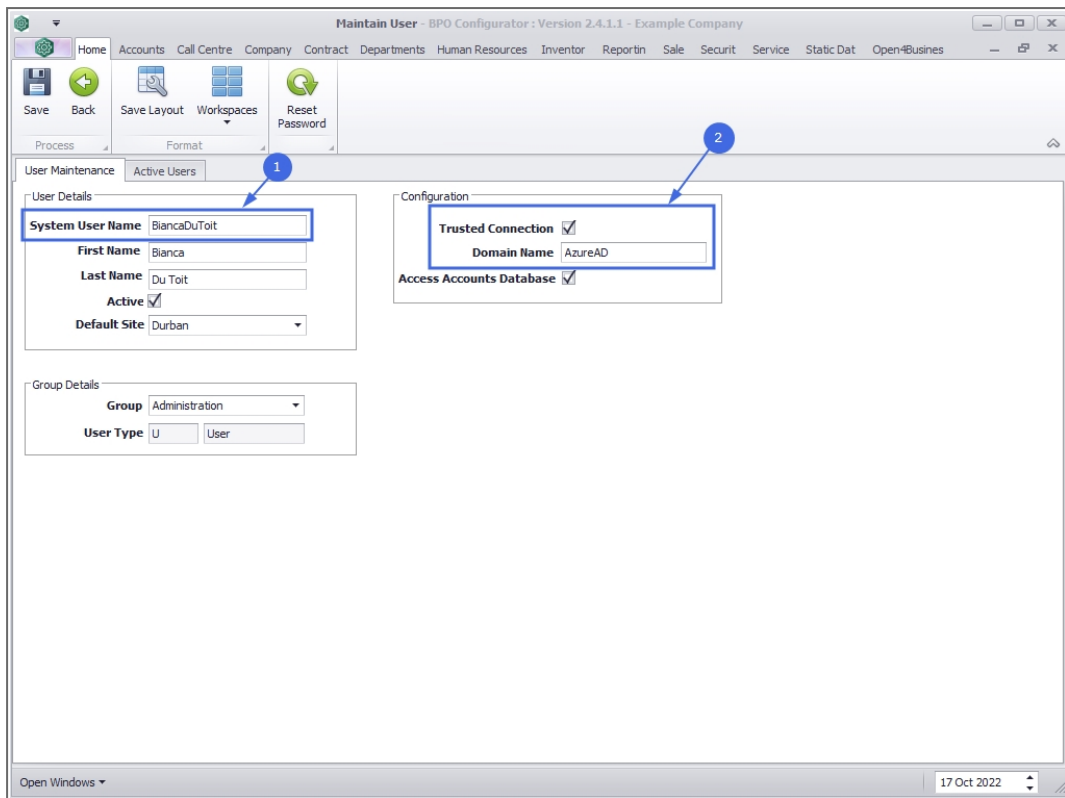
Traditionally the BPO database and user logins are created using SQL Authentication to log into the BPO database in SQL Server. However, the BPO environment and user logins can be configured to use Windows Authentication.

This involves allowing SQL Server to access the Domain, SQL User set up in SQL Server, User Setup in BPO Configurator and Environment set up in the Registry. Below is the overview relating to the BPO and User Setup.

BPO USER LOGINS

Just a note that creating the logins via BPO Configurator will create the SQL Login too. If the full Domain\Username is known, this can be entered when [creating a user](#), with the following differences:

1. System User Name: The employee's windows login name
2. Trusted Connection flag should be enabled, and type in the Domain Name.



Maintain User - BPO Configurator : Version 2.4.1.1 - Example Company

Home Accounts Call Centre Company Contract Departments Human Resources Inventor Reportin Sale Securit Service Static Dat Open4Business

Save Back Save Layout Workspaces Reset Password

Process Format

User Maintenance Active Users

User Details

System User Name BiancaDuToit

First Name Bianca

Last Name Du Toit

Active ☒

Default Site Durban

Configuration

Trusted Connection ☒

Domain Name AzureAD

Access Accounts Database ☒

Group Details

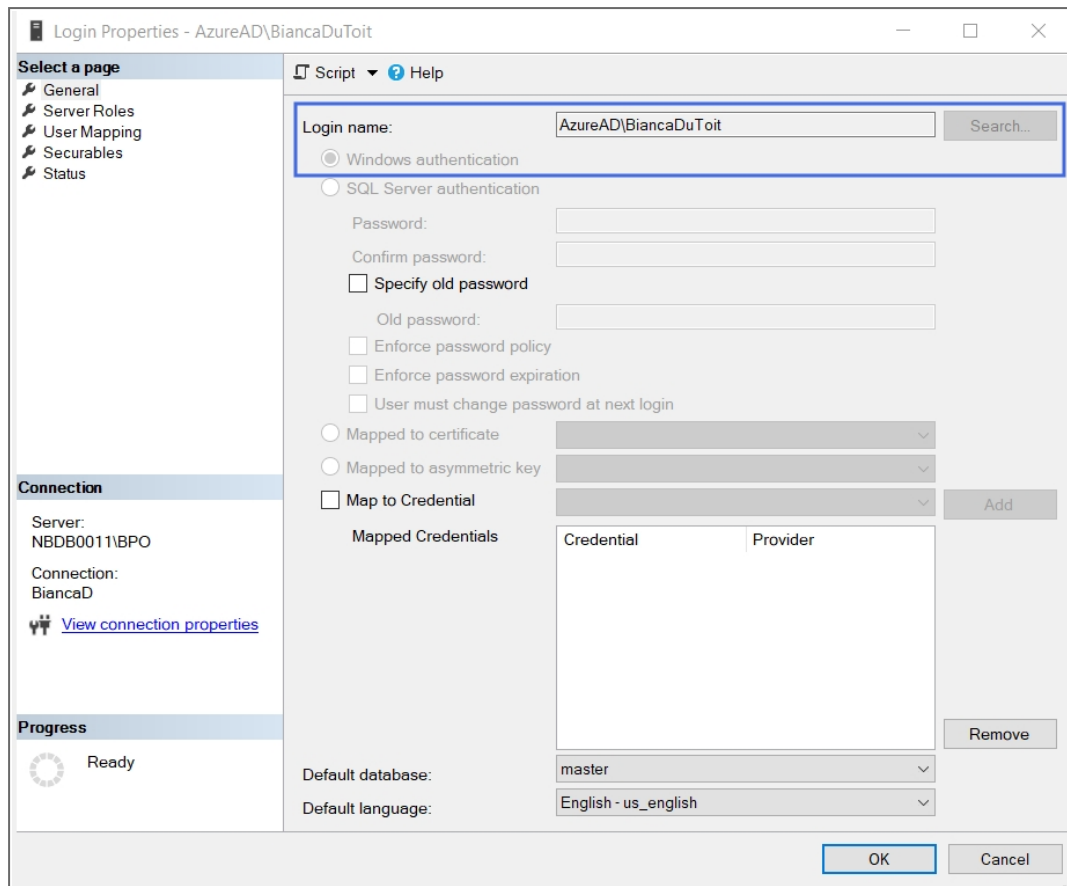
Group Administration

User Type U User

Open Windows 17 Oct 2022

SQL SERVER LOGINS

- Within SQL Server Management - check that this user has been created, and set to Windows Authentication.



Login Properties - AzureAD\BiancaDuToit

Select a page: General, Server Roles, User Mapping, Securables, Status

Script Help

Login name: AzureAD\BiancaDuToit Search...

☒ Windows authentication

☐ SQL Server authentication

Password:

Confirm password:

☐ Specify old password

Old password:

☐ Enforce password policy

☐ Enforce password expiration

☐ User must change password at next login

☐ Mapped to certificate

☐ Mapped to asymmetric key

☐ Map to Credential

Mapped Credentials

Credential	Provider
------------	----------

Add Remove

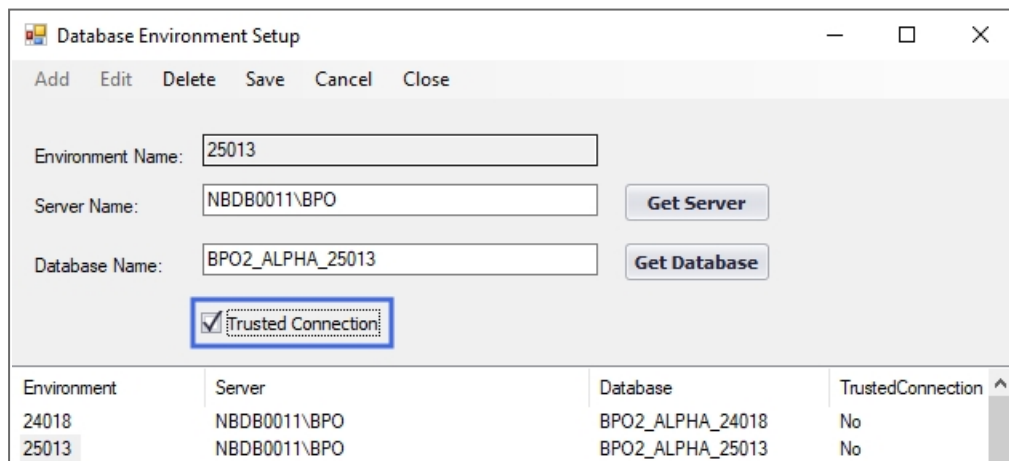
Default database: master

Default language: English - us_english

OK Cancel

BPO ENVIRONMENT SETUP

- When creating or Editing the BPO Connection Environment, ensure that the Trusted Connection flag is selected.



Database Environment Setup

Add Edit Delete Save Cancel Close

Environment Name: 25013

Server Name: NBDB0011\BPO Get Server

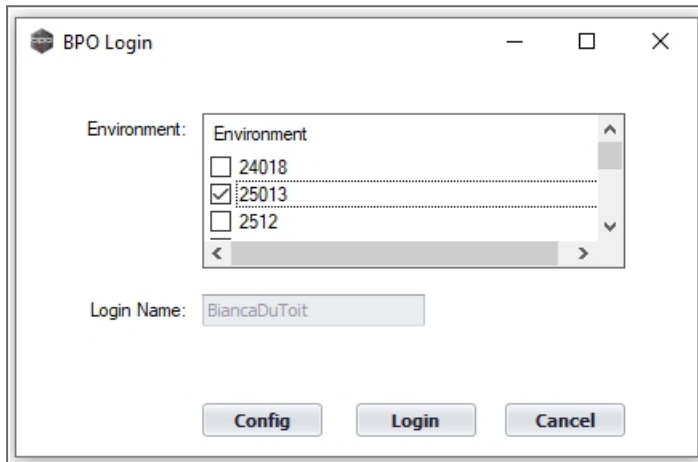
Database Name: BPO2_ALPHA_25013 Get Database

☒ Trusted Connection

Environment	Server	Database	TrustedConnection
24018	NBDB0011\BPO	BPO2_ALPHA_24018	No
25013	NBDB0011\BPO	BPO2_ALPHA_25013	No

BPO LOGIN

- [Log onto BPO](#) with the following difference:
- The login name will be greyed out (but remains pre-populated with the windows login name that is used to log onto the pc).
- The password field is now hidden. BPO will login using the windows login credentials.



BPO2.000.002