

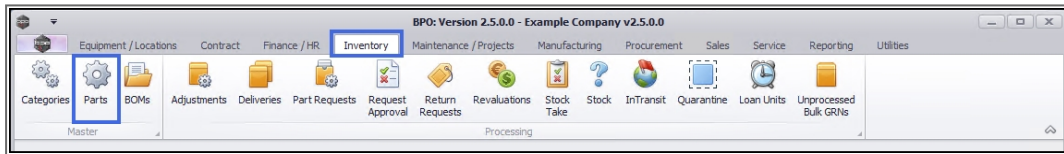
INVENTORY

PARTS – ADD PART DEFINITION BOM ALLOCATION

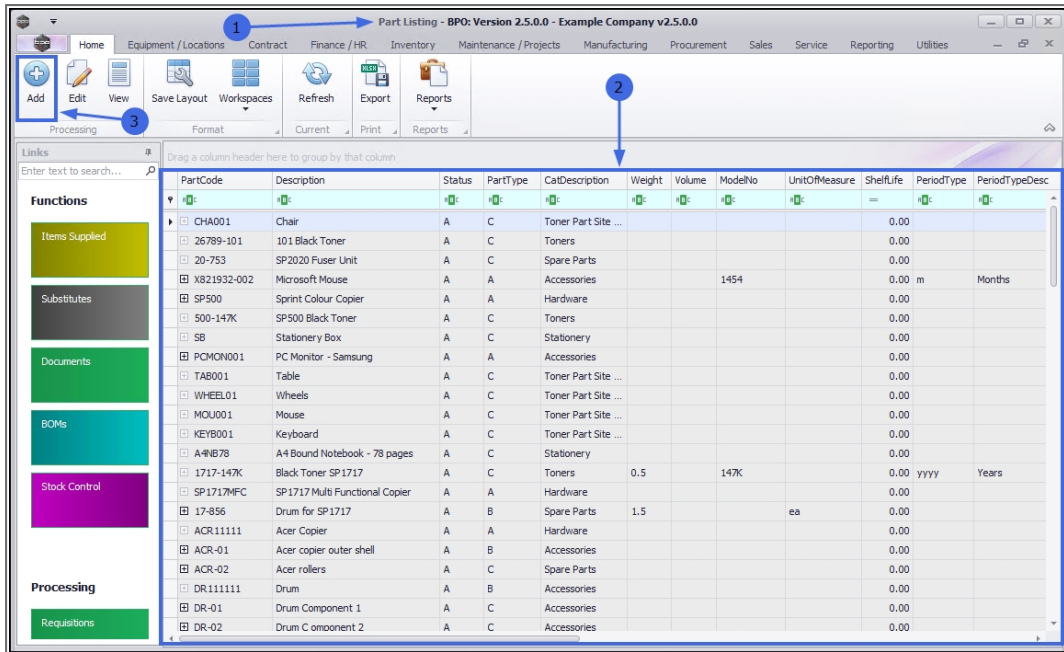
Allocating a **BOM** to a part definition involves linking a comprehensive list of all that is required to create, install or service the part.

Once the part definition [details](#) and [defaults](#) have been added, you can add information to the **BOM Allocation** panel.

Ribbon Access: Inventory > Parts

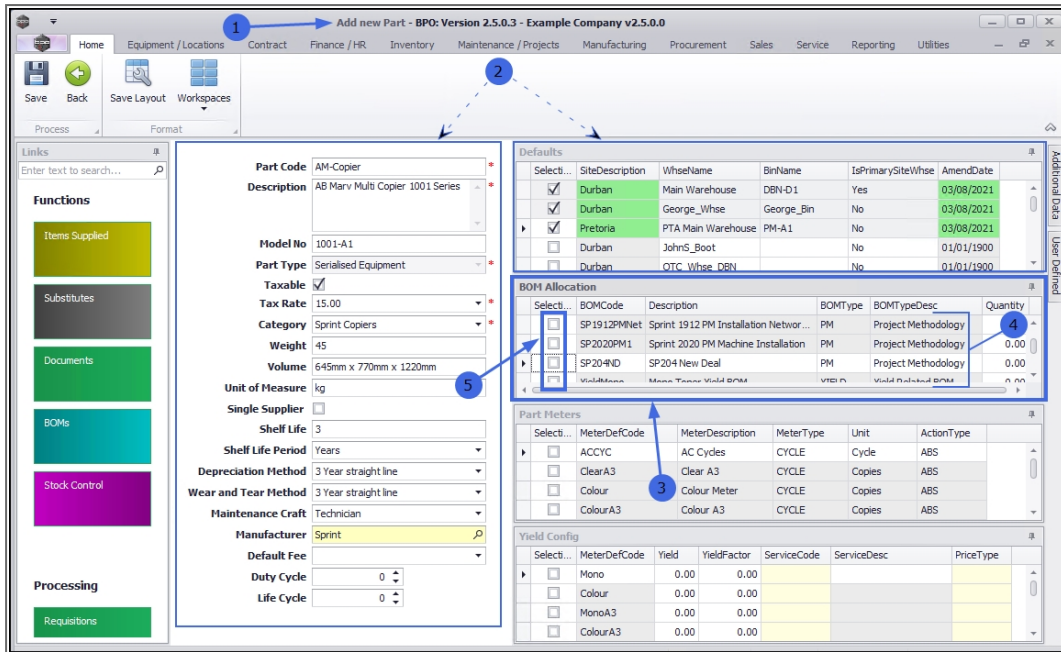


1. The **Part Listing** screen will display.
2. The data grid will display a list of all the part definitions currently on the system.
3. Click on **Add**.

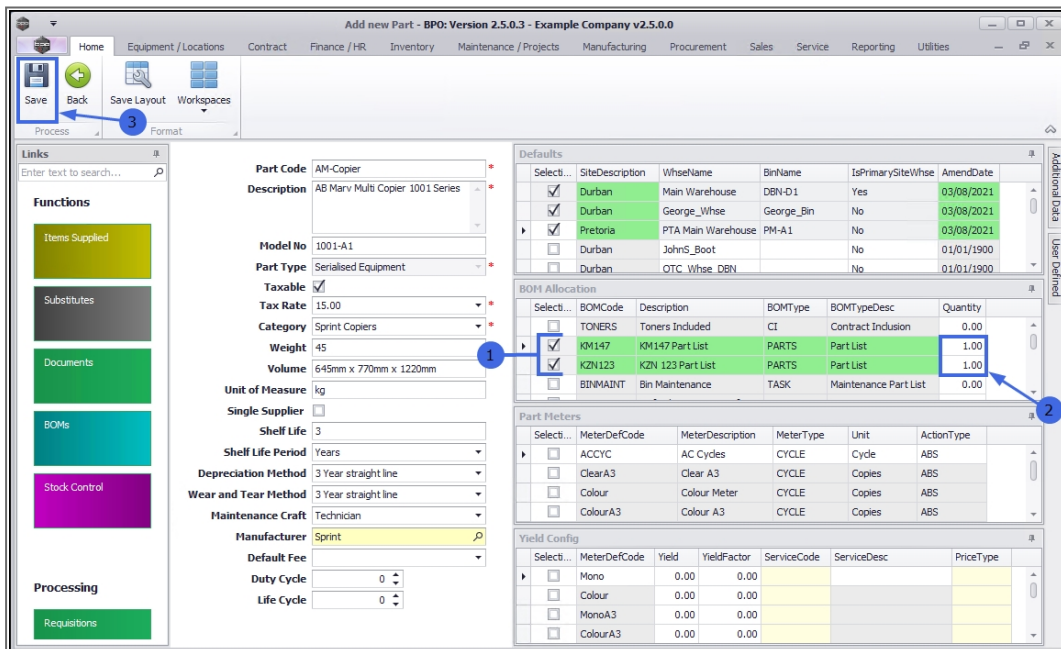


1. The **Add new part** screen will open.
2. Follow the process to add the part definition [details](#) and [defaults](#).
3. Move down to the **BOM Allocation** panel.
4. This panel will list the available **BOMs** and enables you to link a part definition to a current [Bill Of Materials](#).
5. In the **Selection** column select the check boxes in front of the BOMs you wish to link this part definition.

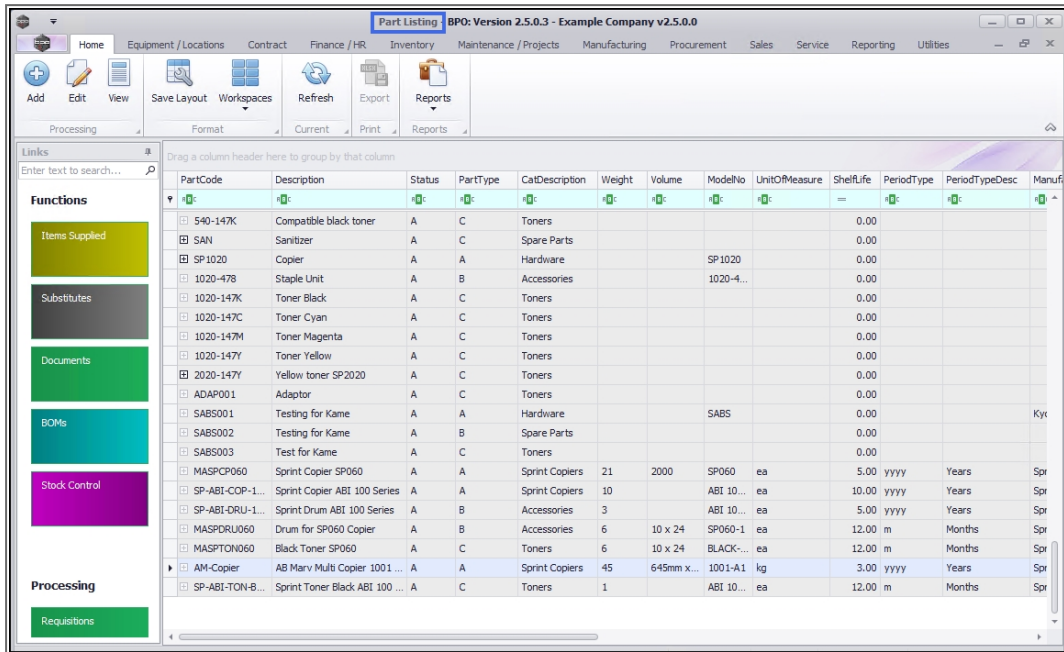
Note: A part definition can be linked to more than one BOM.



1. In this example, **2** BOMs have been linked.
2. Click in the **Quantity** column of each of the new BOM Allocations and either type in or use the directional arrows to enter the requisite quantity.
3. When you have linked all the required BOMs, click on **Save**.



The added BOM Allocations will be saved and you will return to the **Part Listing** screen.



Related Topics

- [Add Part Definition Details](#)
- [Add Part Definition Defaults](#)
- [Add Part Definition Part Meters](#)
- [Add Part Definition Yield Config](#)
- [Add Part Definition Additional Data](#)
- [Add Part Definition User Defined](#)

MNU.026.032