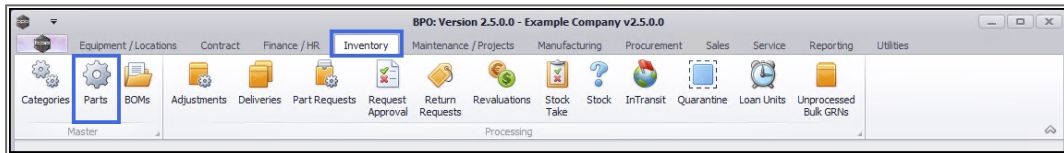


INVENTORY

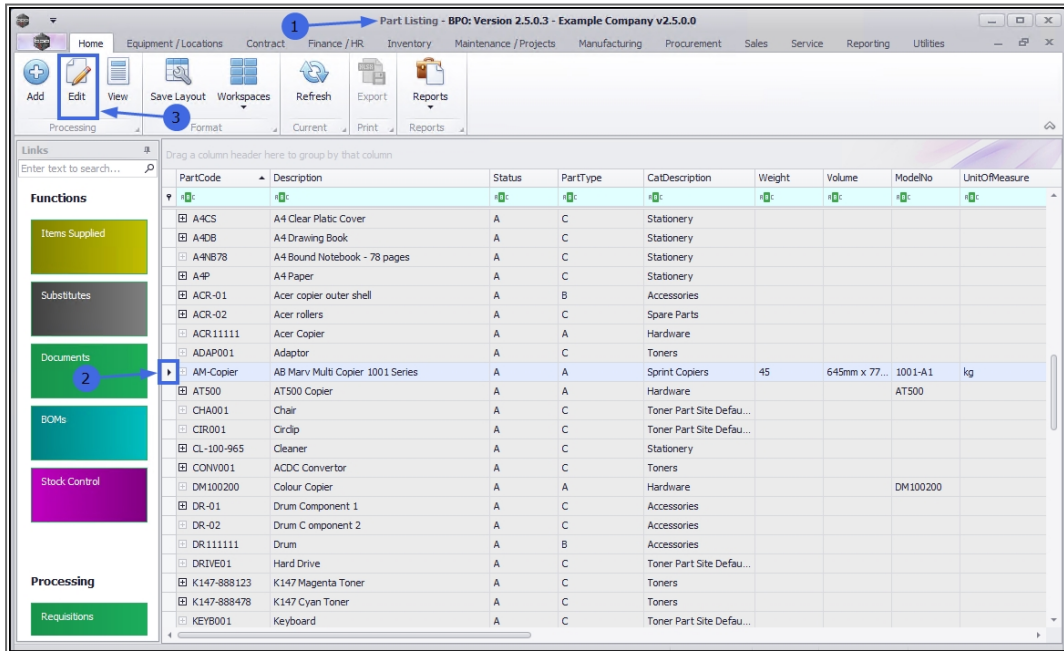
PARTS - EDIT PART DEFINITION DEFAULTS

The information in the part definition **Defaults** panel may need to be edited. For example, you may wish to change the part site warehouse **selection** or change the **primary** site warehouse.

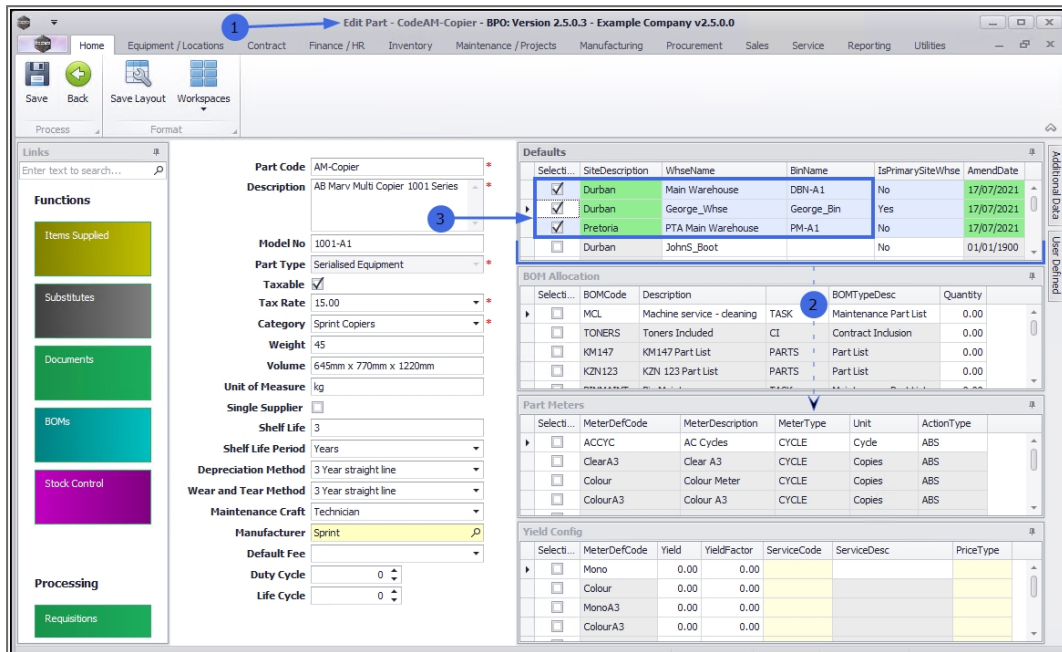
Ribbon Access: Inventory > Parts



1. The **Part Listing** screen will display.
2. Select the **row** of the part definition where you wish to make changes to the part site **Defaults** information.
3. Click on **Edit**.



1. The **Edit Part - Code []** screen will display.
2. Expand the **Defaults** panel if necessary to make it easier to work in.
3. Note that the site warehouses currently linked to the part definition are: **Durban - Main Warehouse**, **Durban - George Warehouse** and **Pretoria - PTA Main Warehouse**.

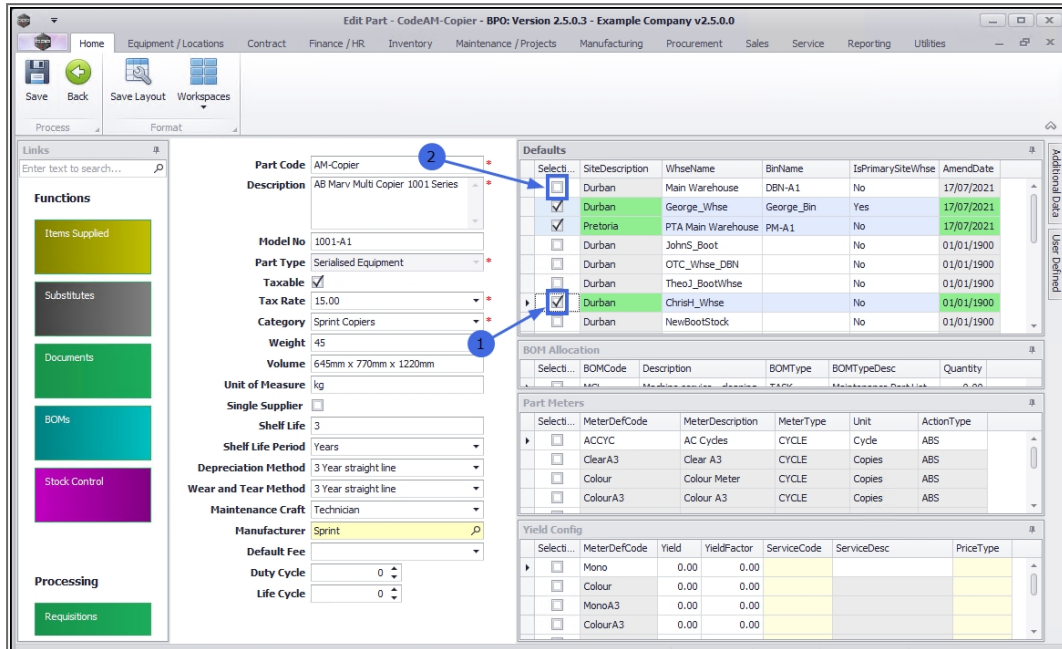


EDIT PART SITE WAREHOUSE SELECTION

To edit a **site warehouse(s)** linked to the part definition, you will either wish to link a new site warehouse(s) or unlink a current site warehouse(s).

1. To link a new site warehouse, ensure that you mark the **Selection** check box in the row of the site warehouse.
2. To unlink a current site warehouse, ensure that you unmark the **Selection** check box in the row of the site warehouse.
 - In this example, the **Durban - Main Warehouse** is being unlinked and the **Durban - ChrisH_Whse** is being linked.

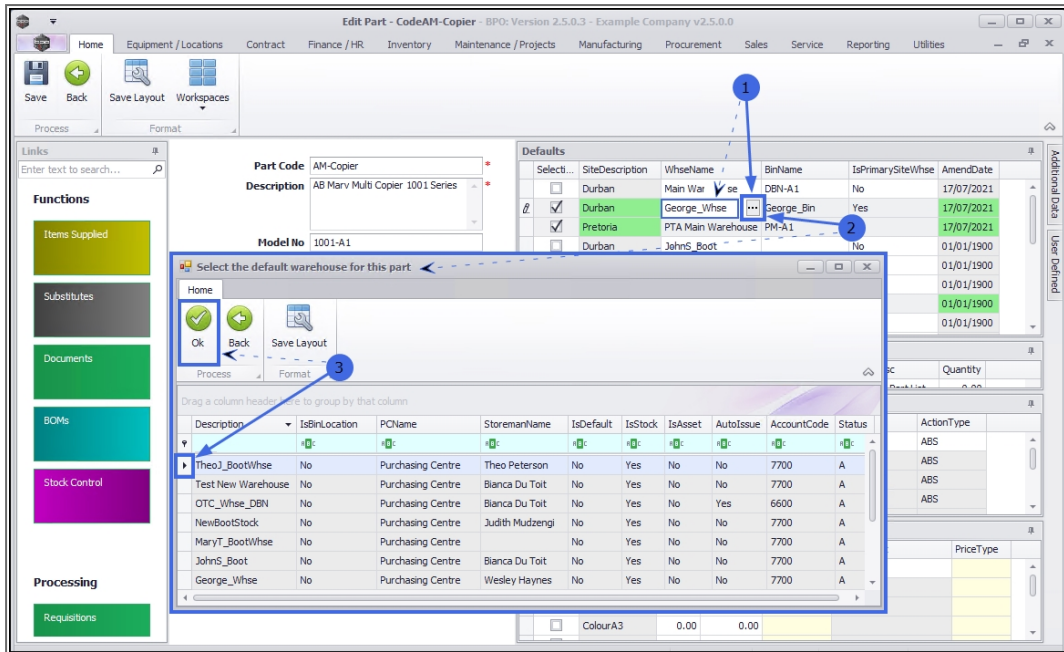
Note: You will need to link a *BinName* to the newly linked site warehouse before you can *Save* your changes. See how to [Add a Part Site Warehouse Bin](#) or [Edit a Part Site Warehouse Bin](#) (below) for more information.



EDIT PART SITE WAREHOUSE

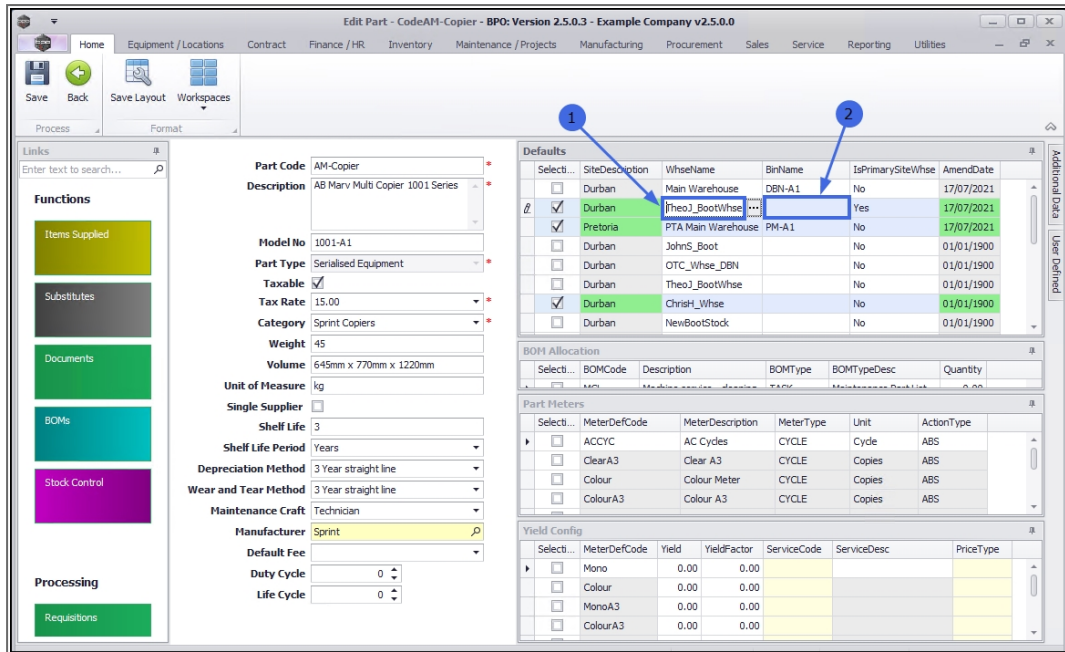
To edit a **Warehouse Name**:

1. Click in the *WhseName* field to reveal an *ellipsis* button.
2. Click on this button to display the *Select...* pop up screen.
3. Select the row of the alternative warehouse description in the data grid and click on **OK**.



1. The selected warehouse name will now populate the **WhseName** field.
2. Note that the **BinName** field is now unpopulated. A bin specific to this warehouse will need to be selected before you can **Save** your changes.

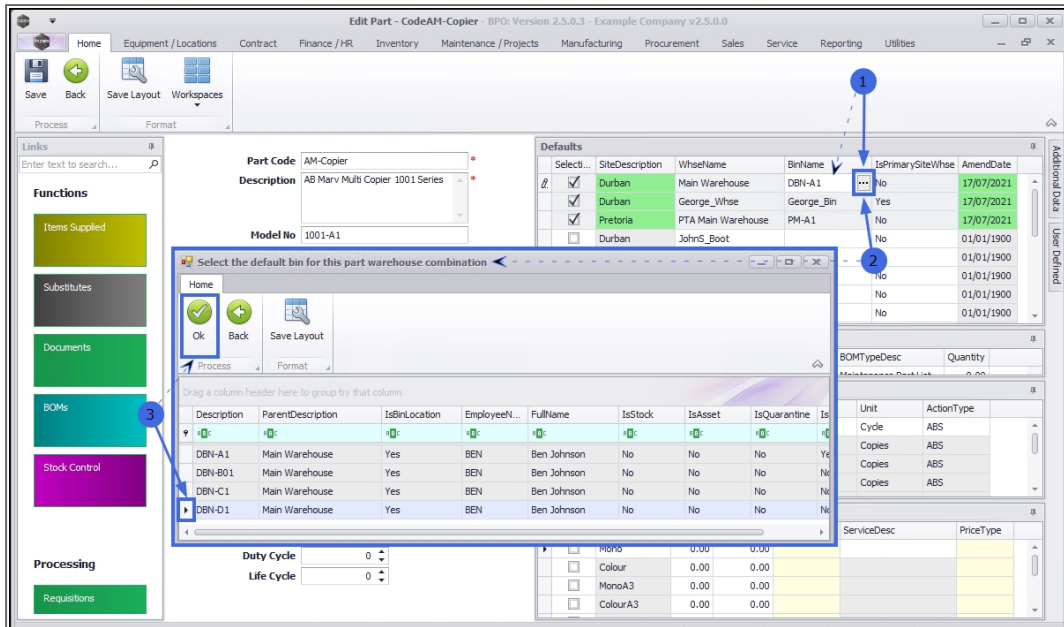
Note: See how to [Add a Part Site Warehouse Bin](#) or [Edit a Part Site Warehouse Bin](#) (below) for more information.



EDIT PART SITE WAREHOUSE BIN

To edit a **Bin Name**:

1. Click in the **BinName** field to reveal an **ellipsis** button.
2. Click on this button to display the **Select...** pop up screen.
3. Select the **row** of the alternative bin description in the data grid and click on **OK**.



1. The selected bin name will now populate the **BinName** field.

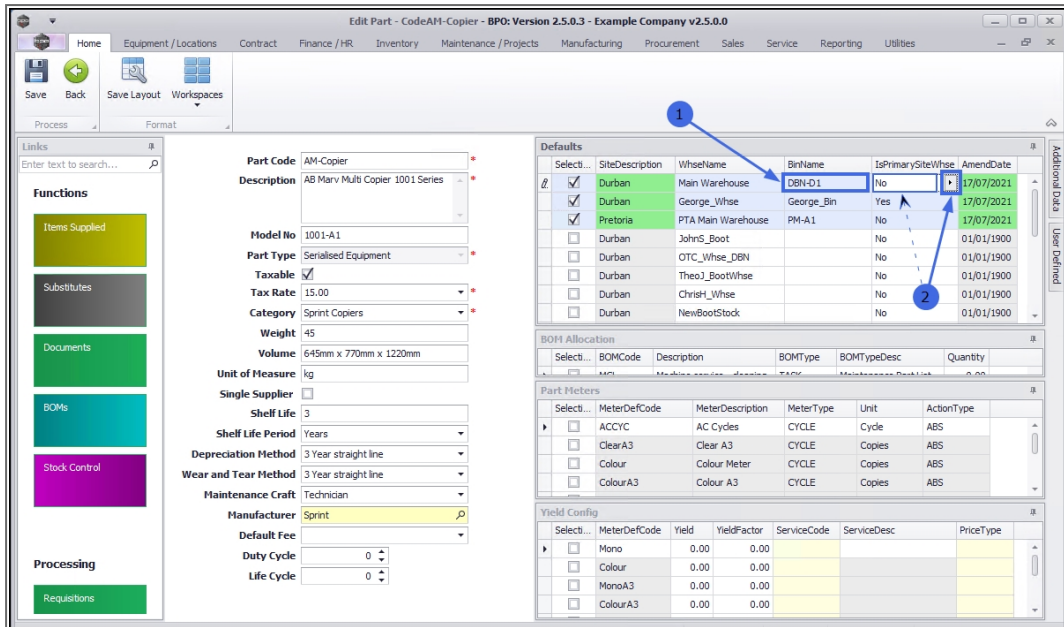
EDIT PRIMARY PART SITE WAREHOUSE

You may wish to change the **primary site warehouse**. For example, one of the newly selected site warehouses may need to be linked as the primary one.

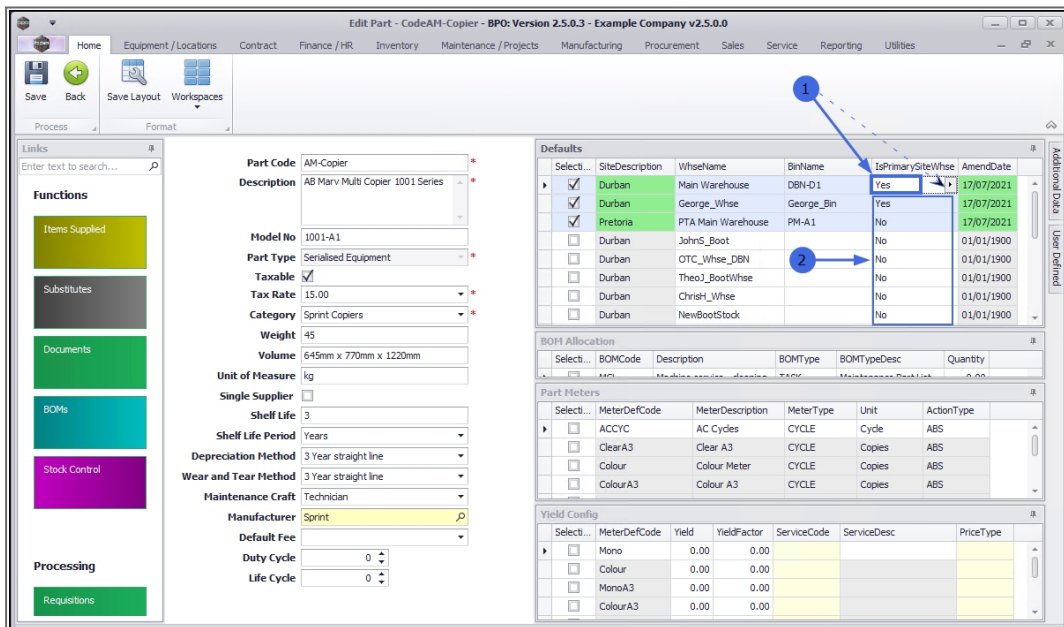
To edit the **primary site warehouse**:

2. Ensure that you are in the row of the warehouse that you wish to make the **primary** default warehouse. Click in the **IsPrimarySiteWhse** field to reveal an arrow button.

Note: The **IsPrimarySiteWhse** field will be populated with "No" at this point.

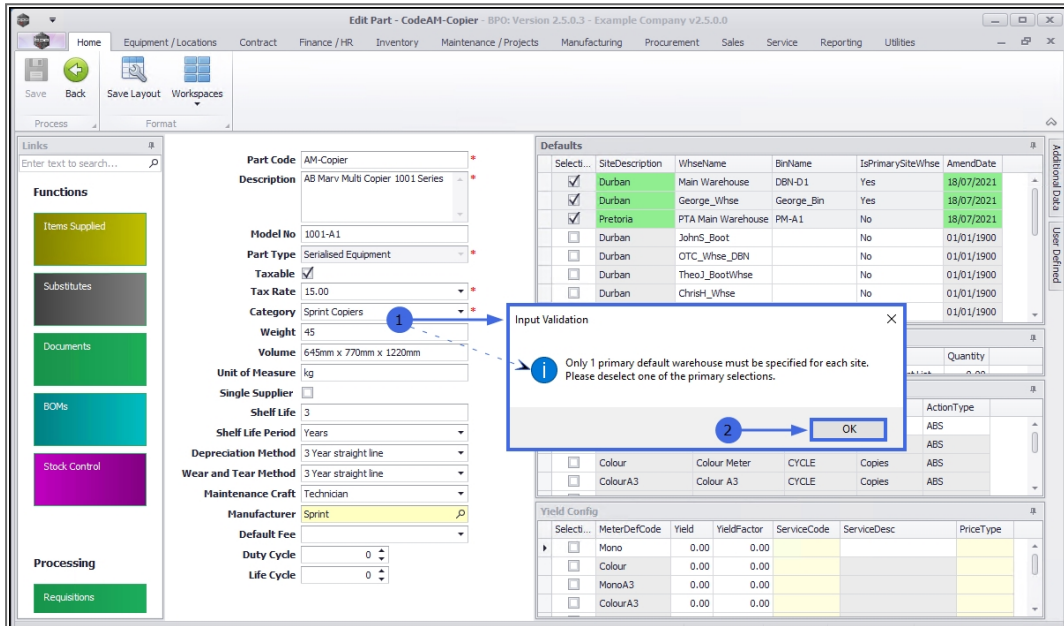


1. Click on the **arrow** button to edit the text to "Yes".
2. It is important to ensure that no other warehouses in the *same site* are selected as the primary site warehouse. The system will not allow you to save the changes if there is more than one **IsPrimarySiteWhse** field within the same site marked as "Yes".



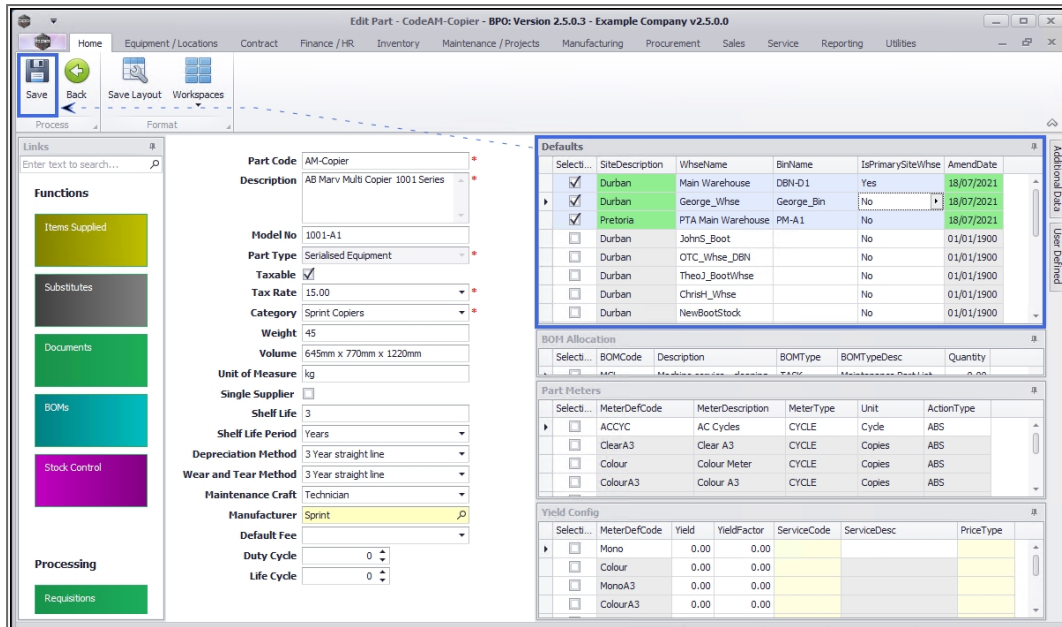
1. An ***Input Validation*** message will pop up stating:
 - *Only 1 primary default warehouse must be specified for each site. Please deselect one of the primary selections.*
2. Click on **OK** and go back and deselect the appropriate warehouses.

Note: You can select a primary warehouse *per site* e.g. the Durban site and the Pretoria site can each have a primary default warehouse.



SAVE CHANGES

When you have finished editing the details in the part definition **Defaults** panel, click on **Save**.



Your changes will be **saved** and you will return to the **Part Listing** screen.

Related Topics

- [Edit Part Definition Details](#)
- [Edit Part Definition BOM Allocation](#)
- [Edit Part Definition Part Meters](#)
- [Edit Part Definition Yield Config](#)
- [Edit Part Definition Additional Data](#)
- [Edit Part Definition User Defined](#)

MNU.026.041

