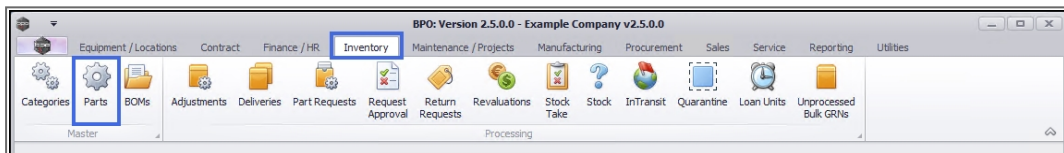


INVENTORY

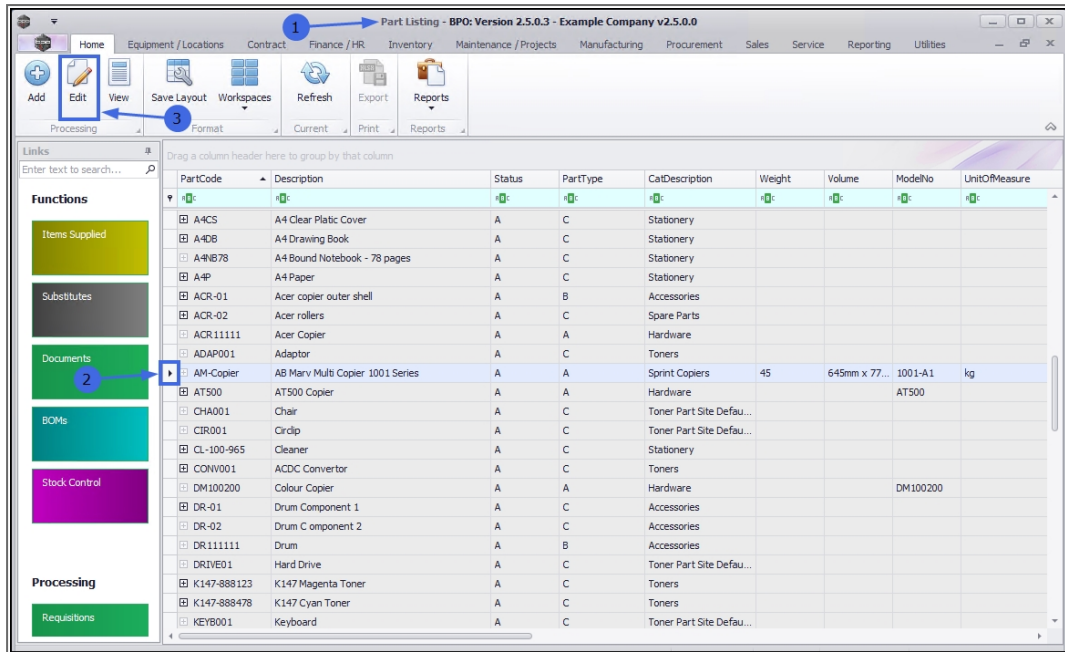
PARTS – EDIT PART DEFINITION BOM ALLOCATION

A part definition's **BOM Allocation** panel details may need to be edited after it has been added and saved to the system.

Ribbon Access: Inventory > Parts

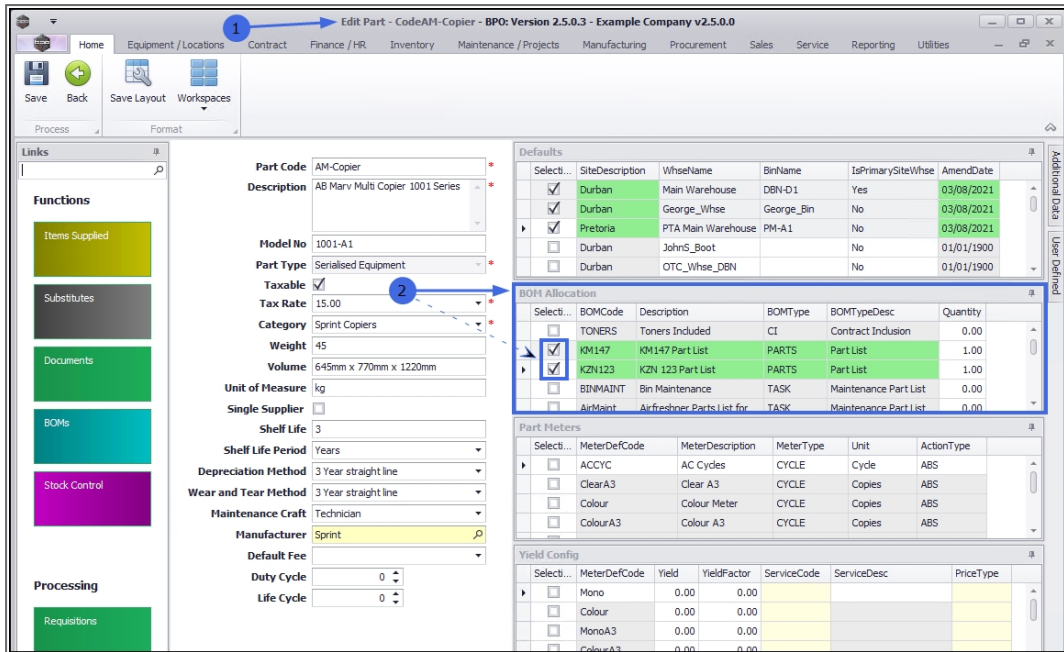


1. The **Part Listing** screen will display.
2. Select the **row** of the part definition where you wish to make changes to the **BOM Allocations** details.
3. Click on **Edit**.

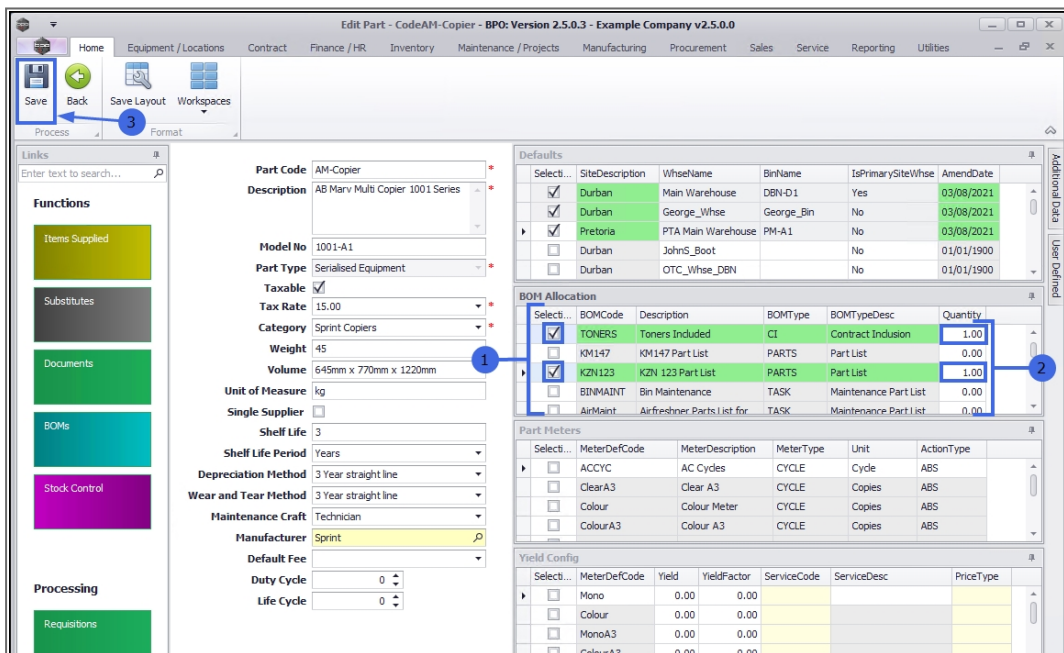


1. The **Edit Part** screen will open.
2. In the **BOM Allocation** panel, you can see there are **2** BOMs already linked to the part definition.

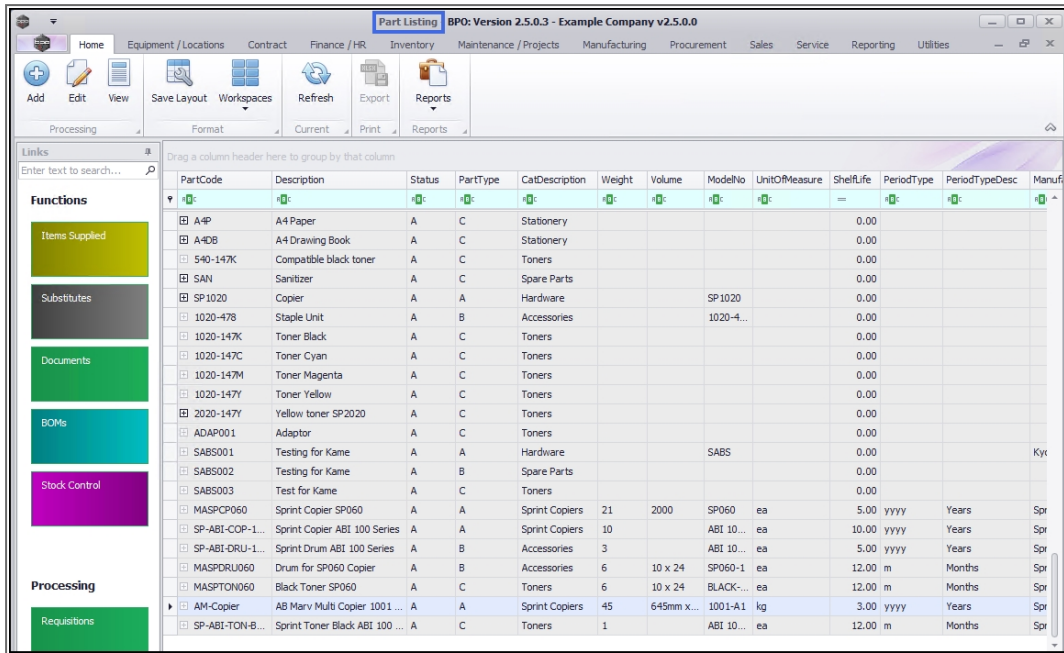
In this example, the part definition is to be unlinked from one of these BOMs and linked to a different BOM.



1. Make the required changes to the **BOM Allocation** panel.
2. Ensure the requisite **Quantity** of the edited BOM Allocations have been adjusted.
3. Click on **Save**.



Your changes will be saved and you will return to the **Part Listing** screen.



Related Topics

- [Edit Part Definition Details](#)
- [Edit Part Definition Defaults](#)
- [Edit Part Definition Part Meters](#)
- [Edit Part Definition Yield Config](#)
- [Edit Part Definition Additional Data](#)
- [Edit Part Definition User Defined](#)

MNU.026.042