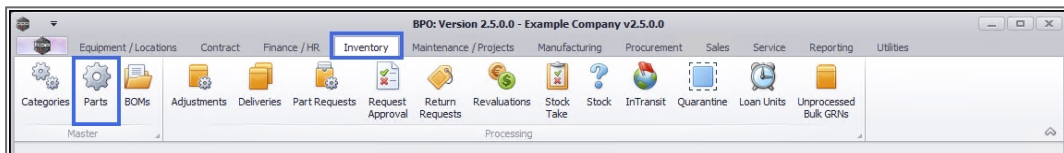


# INVENTORY

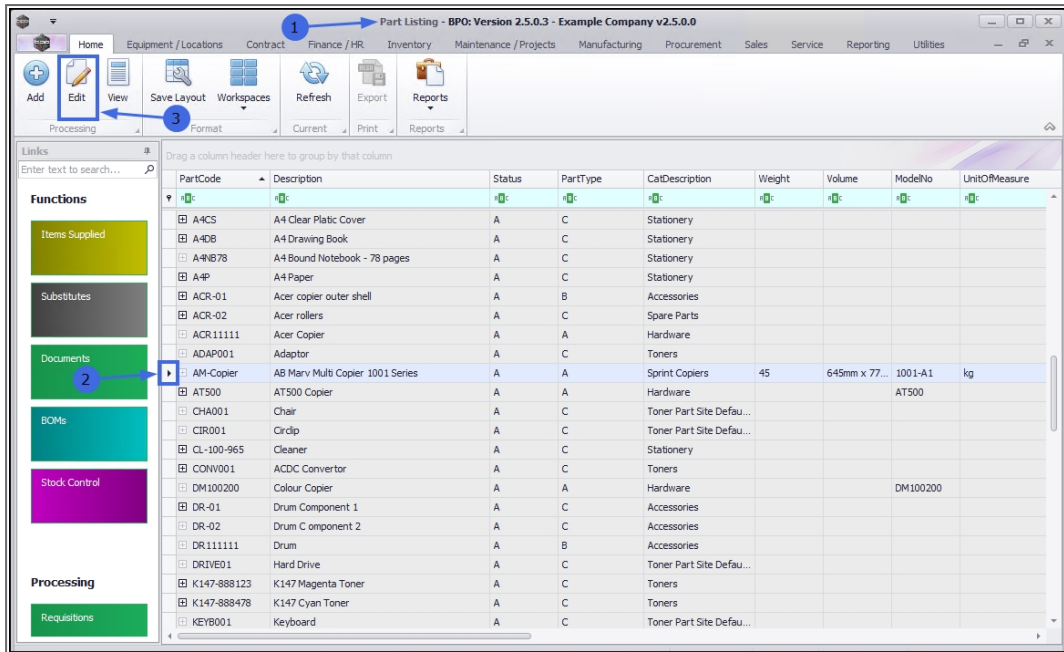
## PARTS – EDIT PART DEFINITION PART METERS

A part definition's **Part Meters** panel details may need to be edited after it has been added and saved to the system.

*Ribbon Access: Inventory > Parts*

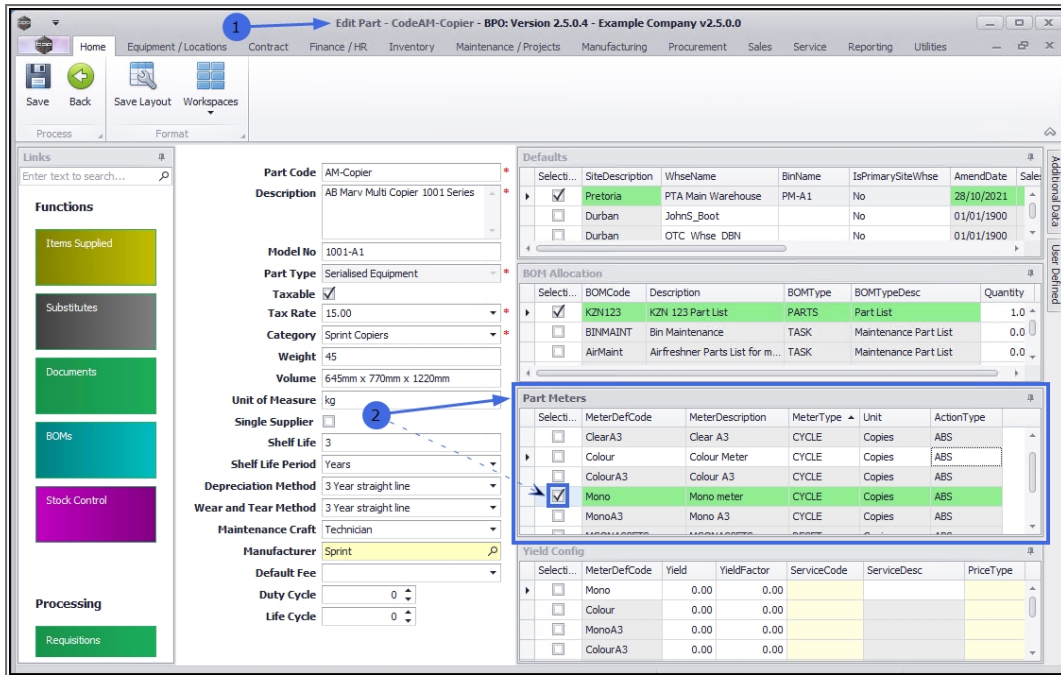


1. The **Part Listing** screen will display.
2. Select the **row** of the part definition where you wish to make changes to the **Part Meters** details.
3. Click on **Edit**.



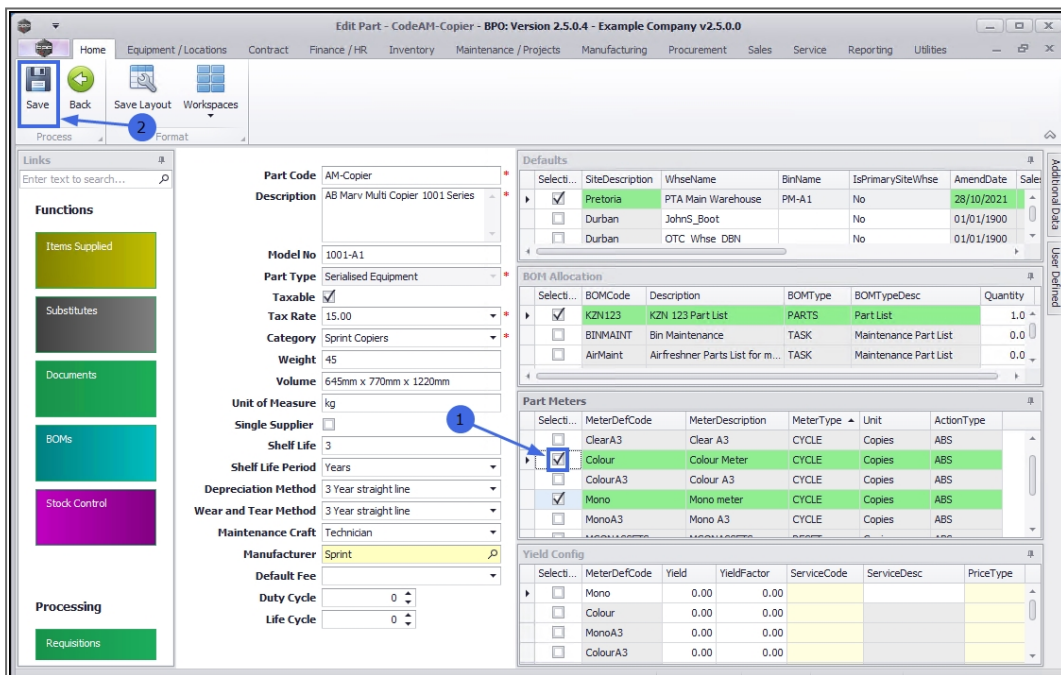
1. The **Edit Part** screen will open.
2. In the **Part Meters** panel, you can see there is one part meter already linked to the part definition.

In this example, the part definition is to have a **Colour Meter** linked as well as the currently linked **Mono Meter**.

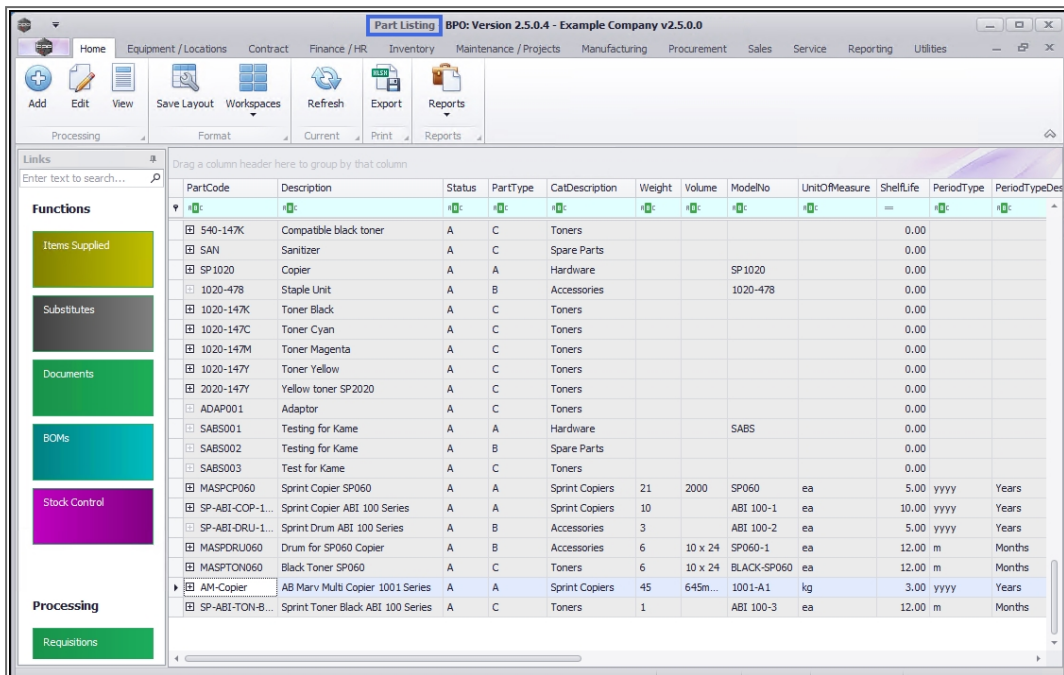


Make the required changes to the **Part Meters** panel.

1. In this example, **Colour - Colour Meter** is now selected.
2. Click on **Save**.



Your changes will be saved and you will return to the **Part Listing** screen.



## Related Topics

- [Edit Part Definition Details](#)
- [Edit Part Definition Defaults](#)
- [Edit Part Definition BOM Allocation](#)
- [Edit Part Definition Yield Config](#)
- [Edit Part Definition Additional Data](#)
- [Edit Part Definition User Defined](#)

MNU.026.043