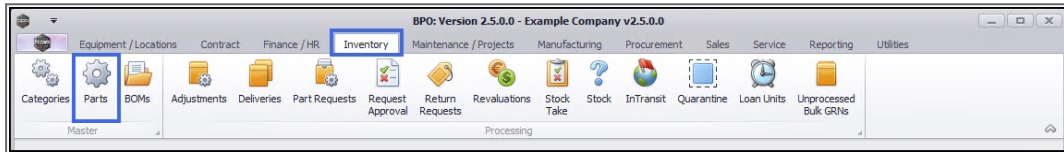


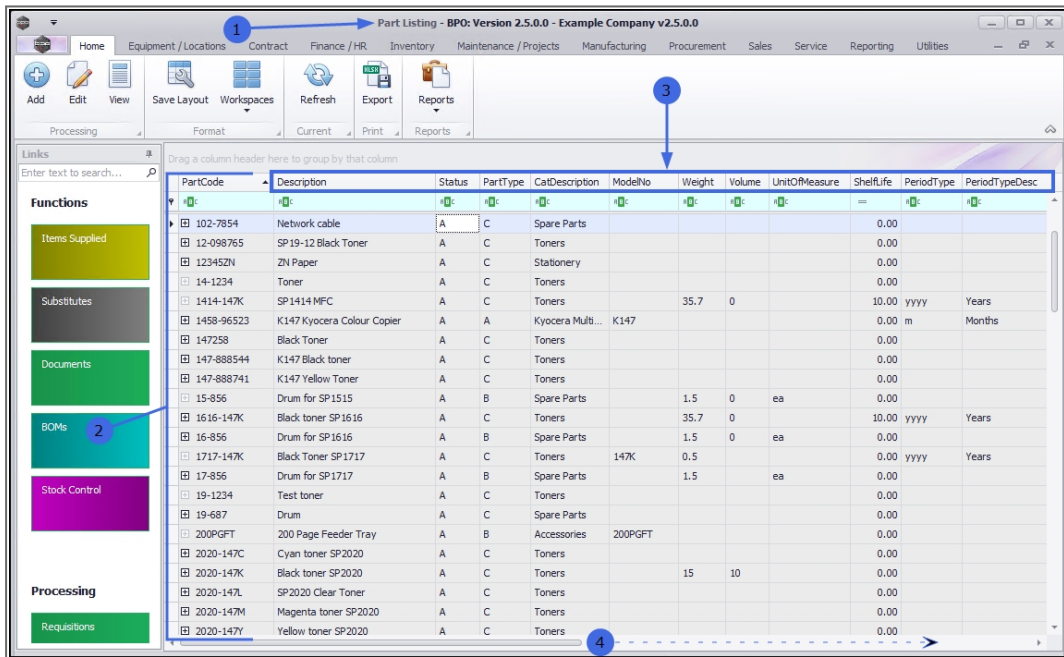
INVENTORY

PARTS - TRANSACTIONS

Ribbon Access: *Inventory* > *Parts*



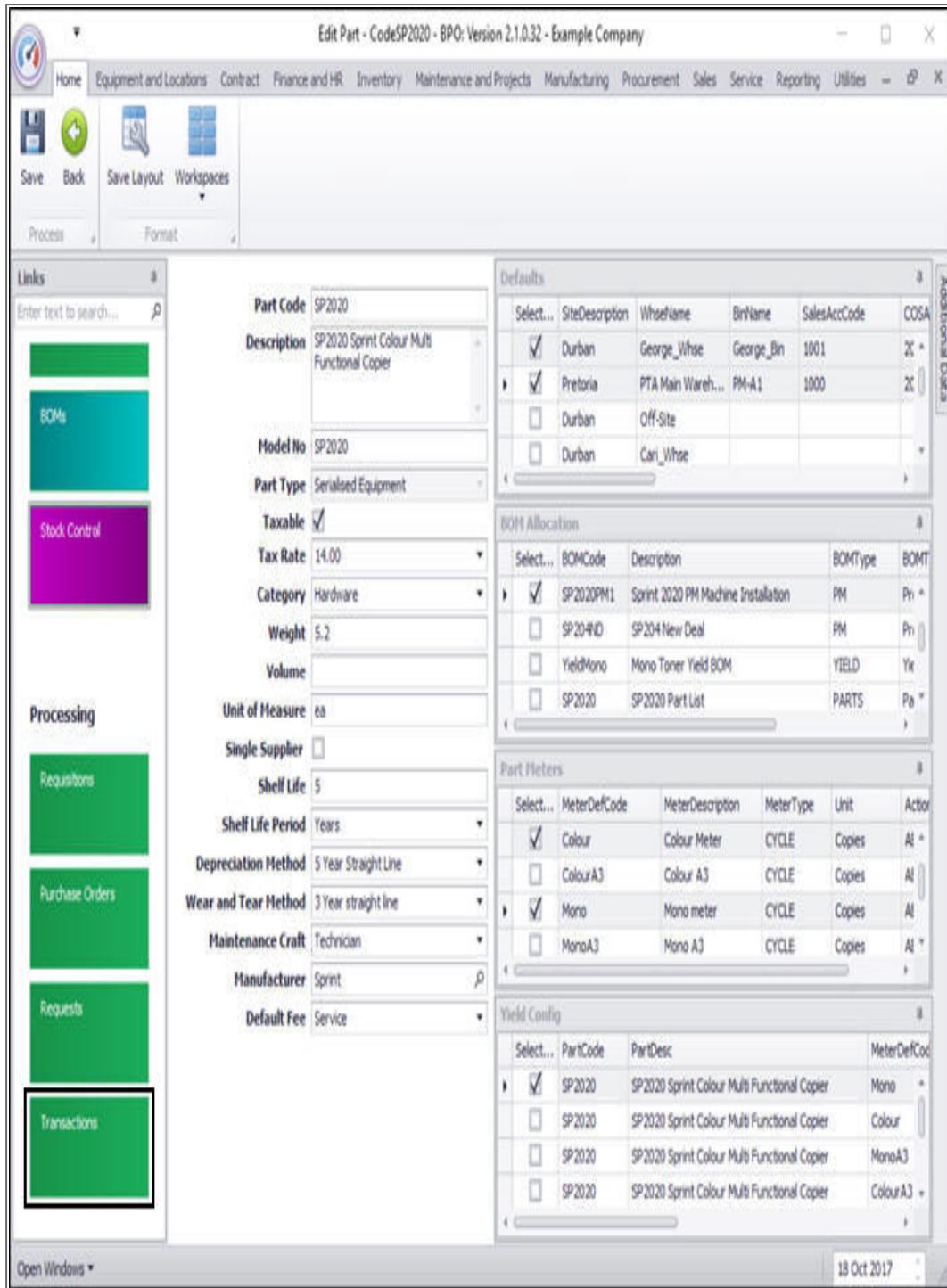
1. The **Part Listing** screen will display.
2. Here you can view a list of **part definitions** that have been set up on the system.
3. These part definitions store information relevant to the part, including:



Transactions

The Transactions tile directs you to a data grid of transactional information relating to the selected part:

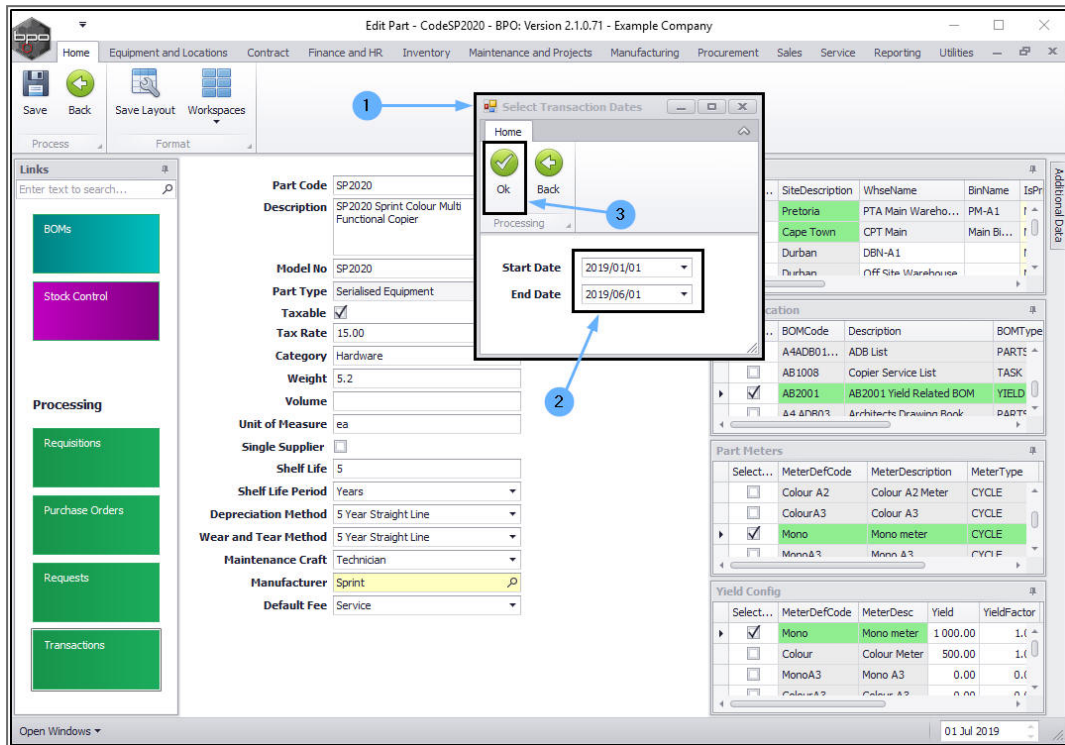
- **Goods Received Notes History**
 - **Stock Issue History**
 - **Stock Returns History**
 - **Stock Transfer History**
 - **Stock Adjustments History**
- In the ***Edit Part - Code []*** screen,
 - Click on the ***Transactions*** tile.



1. A **Select Transaction Dates** screen will pop up.
2. Select the **Start Date** and **End Date** that you wish to view the part

transactions for.

3. Click on **OK**.



The **Transactions for Part: []** screen will be displayed.

Here you can view a list of the following transactions raised for the selected part in the selected date range:

1. **GRN (Goods Received Notes) History**
2. **Stock Issue History**
3. **Stock Return History**
4. **Stock Transfer History**
5. **Stock Adjustment History**
6. Use the **filter row** to filter for a document type to make it easier to view the required transactions.
7. Click on **Back** to exit the screen.

Transactions for Part : SP2020 - BPO: Version 2.1.0.71 - Example Company

Home | Equipment and Locations | Contract | Finance and HR | Inventory | Maintenance and Projects | Manufacturing | Procurement | Sales | Service | Reporting | Utilities

Back | Save Layout | Workspaces | Print | Export | Refresh

Format | Print | Cur...

Drag a column header here to group 1 column

DocNo	DocType	EventDate	PartCode	PartDesc	WarehouseName	BinLocationName	SerialNo	UnitCost	Quantity	Value
GR00000461	RECEIPT	30 Apr 2019	SP2020	SP2020 Sprint Colour Multi Functional Copier	Main Warehouse	DBN-A1	2020-102047	0.01	1.00	0.01
GR00000463	RECEIPT	30 Apr 2019	SP2020	SP2020 Sprint Colour Multi Functional Copier	Main Warehouse	DBN-A1	019122010...	0.00	1.00	0.00
SI00000812	ISSUE	29 May 2019	SP2020	SP2020 Sprint Colour Multi Functional Copier	Main Warehouse	DBN-A1	AB999011	4 500.00	1.00	-4 500.00
SI00000814	ISSUE	29 May 2019	SP2020	SP2020 Sprint Colour Multi Functional Copier	Assets Warehouse	Internal Assets	2020-102041	500.00	1.00	-500.00
SI00000801	ISSUE	06 Jan 2019	SP2020	SP2020 Sprint Colour Multi Functional Copier	Main Warehouse	DBN-A1	AM001	4 500.00	1.00	-4 500.00
RE00000202	RETURN	26 Feb 2019	SP2020	SP2020 Sprint Colour Multi Functional Copier	Main Warehouse	DBN-A1	AB999011	4 500.00	1.00	4 500.00
TR00000397	TRANSFER	28 Feb 2019	SP2020	SP2020 Sprint Colour Multi Functional Copier	Main Warehouse	DBN-A1	AB999015	4 500.00	1.00	-4 500.00
TR00000397	TRANSFER	28 Feb 2019	SP2020	SP2020 Sprint Colour Multi Functional Copier	George Warehouse	George_2_Bin	AB999015	4 500.00	1.00	4 500.00
TR00000398	TRANSFER	28 Feb 2019	SP2020	SP2020 Sprint Colour Multi Functional Copier	Main Warehouse	DBN-A1	AB999018	4 500.00	1.00	-4 500.00
TR00000398	TRANSFER	28 Feb 2019	SP2020	SP2020 Sprint Colour Multi Functional Copier	George Warehouse	George_Bin	AB999018	4 500.00	1.00	4 500.00
TR00000399	TRANSFER	28 Feb 2019	SP2020	SP2020 Sprint Colour Multi Functional Copier	Main Warehouse	DBN-A1	AM003	4 500.00	1.00	-4 500.00
TR00000399	TRANSFER	28 Feb 2019	SP2020	SP2020 Sprint Colour Multi Functional Copier	George Warehouse	George_Bin	AM003	4 500.00	1.00	4 500.00
SA00000268	ADJUST	28 Feb 2019	SP2020	SP2020 Sprint Colour Multi Functional Copier	George Warehouse	George_Bin	AM003	4 500.00	1.00	-4 500.00
SA00000268	ADJUST	28 Feb 2019	SP2020	SP2020 Sprint Colour Multi Functional Copier	George Warehouse	George_Bin	AM003	5 000.00	1.00	5 000.00
SI00000807	ISSUE	02 Apr 2019	SP2020	SP2020 Sprint Colour Multi Functional Copier	Assets Warehouse	Internal Assets	2020-103053	4 500.00	1.00	-4 500.00

Open Windows | 01 Jul 2019

MNU.028.004

