

# INVENTORY

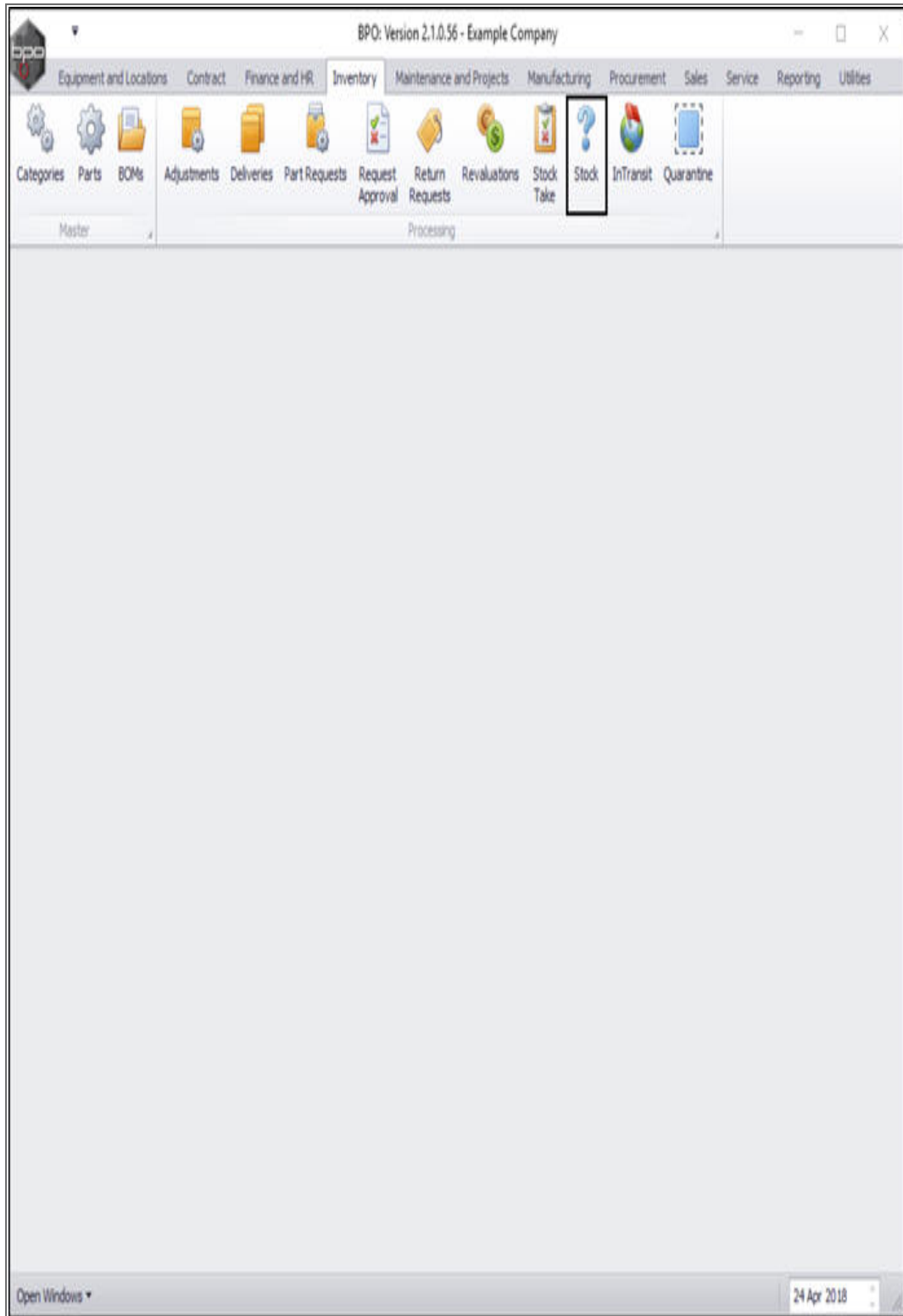
## VIEW STOCK ON HAND

...

---

Ribbon Access: *Inventory > Stock*

---



The **Stock Status** screen will be displayed.

Select the Site and Status

- Select the **site**.
  - In this image **Durban** has been selected.

Stock Status - BPO: Version 2.1.0.56 - Example Company

Home | Equipment and Locations | Contract | Finance and HR | Inventory | Maintenance and Projects | Manufacturing | Procurement | Sales | Service | Reporting | Utilities

Requisition | Stock Transfer | Stock Adjust | Inter Warehouse Request | Save Layout | Workspaces

Selected Warehouse: Warehouse [Durban]

Drag a column header here to group by that column

PartType	PartTypeDesc	PartCode	PartName	ModelNo	CategoryDesc	Category	WarehouseName	CurrentStock	ReservedStock	RequisitionedStock
----------	--------------	----------	----------	---------	--------------	----------	---------------	--------------	---------------	--------------------

Open Windows | 24 Apr 2018

- This screen should default to the ***In Stock Only*** status.
- If not, ensure that you select the ***In Stock Only*** status.

Stock Status - BPO: Version 2.1.0.56 - Example Company

Home Equipment and Locations Contract Finance and HR Inventory Maintenance and Projects Manufacturing Procurement Sales Service Reporting Utilities

Requisition Stock Transfer Stock Adjust Inter Warehouse Request Save Layout Workspaces

Process Format

Selected Warehouse:

Warehouse

In Stock Only Refresh Export

Code Description

- A All Parts
- I In Stock Only
- P Action Items
- S Short Stock Only

PartType	PartTypeDesc	PartCode	PartName	Mod	WarehouseName	CurrentStock	ReservedStock	RequisitionedStock
----------	--------------	----------	----------	-----	---------------	--------------	---------------	--------------------

Open Windows 24 Apr 2018

## SELECT THE WAREHOUSE

---

- Click on the drop-down arrow in the **Warehouse** field to display the **Warehouse Selection** menu.
- Click on the **warehouse** you wish to view.
- In this image, **George Warehouse** has been selected.

The screenshot shows the 'Stock Status - BPO: Version 2.1.0.56 - Example Company' application window. The interface includes a ribbon menu with options like 'Home', 'Equipment and Locations', 'Contract', 'Finance and HR', 'Inventory', 'Maintenance and Projects', 'Manufacturing', 'Procurement', 'Sales', 'Service', 'Reporting', and 'Utilities'. Below the ribbon is a toolbar with icons for 'Requisition', 'Stock Transfer', 'Stock Adjust', 'Inter Warehouse Request', 'Save Layout', 'Workspaces', 'Durban', 'In Stock Only', 'Refresh', and 'Export'. A 'Selected Warehouse' field is present, with a dropdown menu open showing a list of warehouses: 'Main Warehouse', 'Off Site Warehouse', 'George Warehouse', 'Carl Warehouse', 'JohnS Boot', 'OTC Whse DBN', and 'ADO Warehouse'. Below the dropdown is a table with columns: 'PartType', 'PartTypeDesc', 'ModelNo', 'CategoryDesc', 'Category', 'WarehouseName', 'CurrentStock', 'ReservedStock', and 'RequisitionedStock'. The table is currently empty. The status bar at the bottom shows 'Open Windows' and the date '24 Apr 2018'.



## **VIEW STOCK ON HAND FOR A OR B-CLASS ITEM**

---

- The parts data grid will now display a list of all the stock item types available *on hand* in the *Current Stock* column.

Stock Status - BPO: Version 2.1.0.56 - Example Company

Home Equipment and Locations Contract Finance and HR Inventory Maintenance and Projects Manufacturing Procurement Sales Service Reporting Utilities

Requisition Stock Transfer Stock Adjust Inter Warehouse Request Save Layout Workspaces Durban In Stock Only Refresh Export

Selected Warehouse: Warehouse **George Warehouse**

Drag a column header here to group by that column

PartType	PartTypeDesc	PartCode	PartName	ModelNo	CategoryDesc	Category	WarehouseName	CurrentStock	ReservedStock	RequisitionedSt
A	Serialized Equipment	SP2020	SP2020 Sprint Colour Multi ...	SP2020	Hardware	MAMNGR	George Warehouse	1.00	6.00	0.00
C	Non Serialized Parts	2020-147X	Black toner SP2020		Toners	TOMNGR	George Warehouse	8.00	1.00	0.00
A	Serialized Equipment	SP1919	SP1919 Sprint Colour MFC	1919	Hardware	MAMNGR	George Warehouse	2.00	0.00	0.00
C	Non Serialized Parts	SP19-147X	Black Toner SP1919		Toners	TOMNGR	George Warehouse	63.00	2.00	0.00
C	Non Serialized Parts	SP19-147C	Cyan Toner - SP1919		Toners	TOMNGR	George Warehouse	5.00	0.00	0.00
C	Non Serialized Parts	SP19-147Y	Yellow Toner - SP1919		Toners	TOMNGR	George Warehouse	20.00	0.00	0.00
C	Non Serialized Parts	SP19-147M	Magenta toner - SP1919		Toners	TOMNGR	George Warehouse	8.00	0.00	0.00
C	Non Serialized Parts	CL-100-965	Cleaner		Stationery	STCOOT	George Warehouse	9.00	0.00	1.00
C	Non Serialized Parts	147-888544	K147 Black toner		Toners	TOMNGR	George Warehouse	1.00	0.00	0.00
C	Non Serialized Parts	K147-888123	K147 Magenta Toner		Toners	TOMNGR	George Warehouse	1.00	2.00	0.00
C	Non Serialized Parts	9855632	Air Freshner		Stationery	STCOOT	George Warehouse	10.00	0.00	0.00
A	Serialized Equipment	SP19-123456	SP19-12 Colour Copier	SP19-12	Hardware	MAMNGR	George Warehouse	1.00	1.00	0.00
C	Non Serialized Parts	12-098765	SP19-12 Black Toner		Toners	TOMNGR	George Warehouse	5.00	0.00	0.00
C	Non Serialized Parts	204-147Y	SP204 Yellow Toner		Toners	TOMNGR	George Warehouse	5.00	0.00	0.00
C	Non Serialized Parts	204-147M	SP204 Magenta Toner		Toners	TOMNGR	George Warehouse	10.00	1.00	0.00
A	Serialized Equipment	NMACH	New Machine		Hardware	MAMNGR	George Warehouse	2.00	0.00	0.00
C	Non Serialized Parts	CONV001	ACDC Convertor		Toners	TOMNGR	George Warehouse	20.00	0.00	0.00
C	Non Serialized Parts	AzHDB	A4 Drawing Book		Stationery	STCOOT	George Warehouse	5.00	0.00	0.00
C	Non Serialized Parts	SAN	Sanitizer		Spare Parts	SPMNGR	George Warehouse	10.00	0.00	0.00

Open Windows 24 Apr 2018

## VIEW QUANTITY AND LOCATION

---

- To view the *quantity* and *location* of an item type, click on the *expand* icon in the row of the item type that you wish to view.
- In this image an *A-class* item has been selected.

Stock Status - BPO: Version 2.1.0.56 - Example Company

Home Equipment and Locations Contract Finance and HR Inventory Maintenance and Projects Manufacturing Procurement Sales Service Reporting Utilities

Requisition Stock Transfer Stock Adjust Inter Warehouse Request Save Layout Workspaces Durban In Stock Only Refresh Export

Selected Warehouse: Warehouse George Warehouse

Drag a column header here to group by that column

PartType	PartTypeDesc	PartCode	PartName	ModelNo	CategoryDesc	Category	WarehouseName	CurrentStock	ReservedStock	RequisitionedStock
A	Serialized Equipment	SP2020	SP2020 Sprint Colour Mu...	SP2020	Hardware	MAMGR	George Warehouse	1.00	6.00	0.00
C	Non Serialized Parts	2020-147K	Black toner SP2020		Toners	TOMGR	George Warehouse	8.00	1.00	0.00
A	Serialized Equipment	SP1919	SP1919 Sprint Colour MFC	1919	Hardware	MAMGR	George Warehouse	2.00	0.00	0.00
C	Non Serialized Parts	SP19-147K	Black Toner SP1919		Toners	TOMGR	George Warehouse	63.00	2.00	0.00
C	Non Serialized Parts	SP19-147C	Cyan Toner - SP1919		Toners	TOMGR	George Warehouse	5.00	0.00	0.00
C	Non Serialized Parts	SP19-147Y	Yellow Toner - SP1919		Toners	TOMGR	George Warehouse	20.00	0.00	0.00
C	Non Serialized Parts	SP19-147M	Magenta toner - SP1919		Toners	TOMGR	George Warehouse	8.00	0.00	0.00
C	Non Serialized Parts	CL-100-965	Cleaner		Stationery	STCOOT	George Warehouse	9.00	0.00	1.00
C	Non Serialized Parts	147-888544	K147 Black toner		Toners	TOMGR	George Warehouse	1.00	0.00	0.00
C	Non Serialized Parts	K147-888123	K147 Magenta Toner		Toners	TOMGR	George Warehouse	1.00	2.00	0.00
C	Non Serialized Parts	9855632	Air Freshner		Stationery	STCOOT	George Warehouse	10.00	0.00	0.00
A	Serialized Equipment	SP19-123456	SP19-12 Colour Copier	SP19-12	Hardware	MAMGR	George Warehouse	1.00	1.00	0.00
C	Non Serialized Parts	12-098765	SP19-12 Black Toner		Toners	TOMGR	George Warehouse	5.00	0.00	0.00
C	Non Serialized Parts	204-147Y	SP204 Yellow Toner		Toners	TOMGR	George Warehouse	5.00	0.00	0.00
C	Non Serialized Parts	204-147M	SP204 Magenta Toner		Toners	TOMGR	George Warehouse	10.00	1.00	0.00
A	Serialized Equipment	NMACH	New Machine		Hardware	MAMGR	George Warehouse	2.00	0.00	0.00
C	Non Serialized Parts	CONV001	ACDC Converter		Toners	TOMGR	George Warehouse	20.00	0.00	0.00
C	Non Serialized Parts	AzHDB	A4 Drawing Book		Stationery	STCOOT	George Warehouse	5.00	0.00	0.00
C	Non Serialized Parts	SAN	Sanitizer		Spare Parts	SPMGR	George Warehouse	10.00	0.00	0.00

Open Windows 24 Apr 2018

- The **Stock** frame will be expanded.
- Here you can view:
  - **BatchSerialNo(s)** of the selected A-class item(s).
  - **Bin Name(s)** where the selected A-class item(s) are stored.
  - **Quantity** of each serial (batch) number in a bin.

**Note:** With A-class items, there can be only be **one** item per batch/serial number.

Stock Status - BPO: Version 2.1.0.56 - Example Company

Home | Equipment and Locations | Contract | Finance and HR | Inventory | Maintenance and Projects | Manufacturing | Procurement | Sales | Service | Reporting | Utilities

Requestion | Stock Transfer | Stock Adjust | Inter Warehouse Request | Save Layout | Workspaces | Durban | In Stock Only | Refresh | Export

Process | Format | Current | Print

**Selected Warehouse:**  
Warehouse: George Warehouse

Drag a column header here to group by that column

PartType	PartTypeDesc	PartCode	PartName	ModelNo	CategoryDesc	Category	WarehouseName	CurrentStock	ReservedStock	RequisitionedStock
A	Serialized Equipment	SP2020	SP2020 Sprint Colour Mu...	SP2020	Hardware	MAMGR	George Warehouse	1.00	6.00	
C	Non Serialized Parts	2020-147X	Black toner SP2020		Toners	TOMNGR	George Warehouse	8.00	1.00	
A	Serialized Equipment	SP1919	SP1919 Sprint Colour MFC	1919	Hardware	MAMGR	George Warehouse	2.00	0.00	

**Stock**

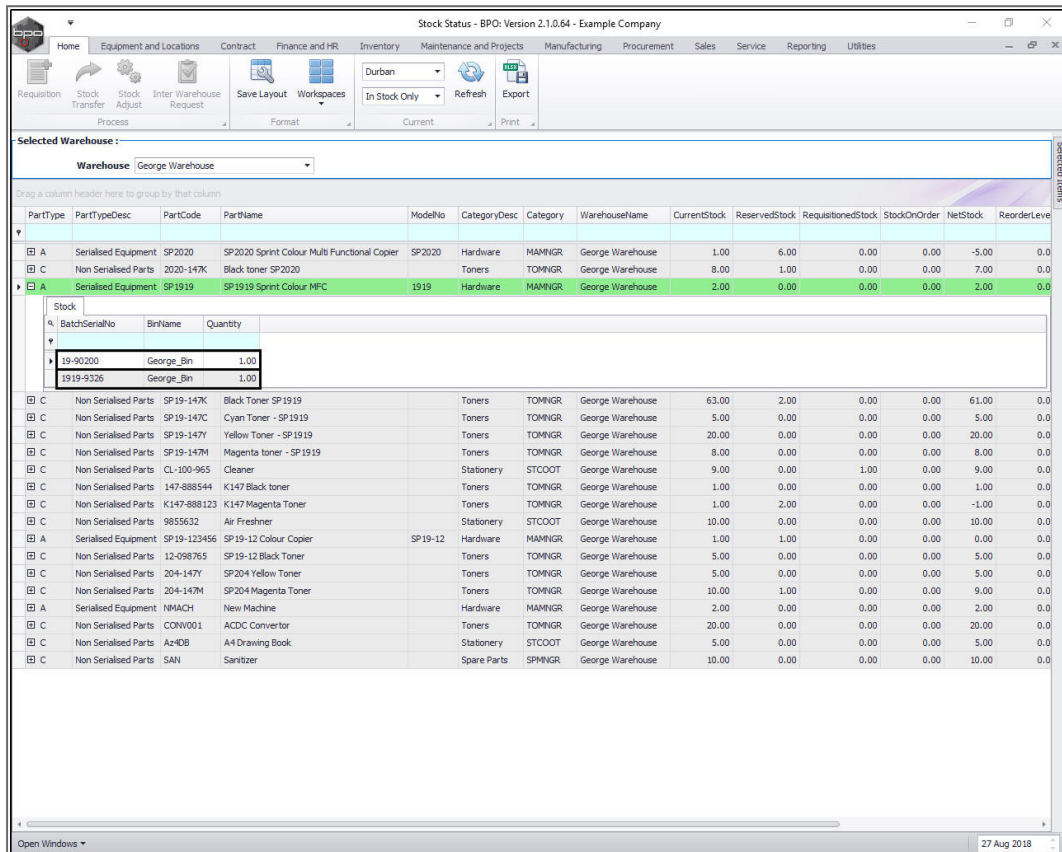
BatchNumber	BinName	Quantity
19-90200	George_Bin	1.00
1919-9326	George_Bin	1.00

C	Non Serialized Parts	SP19-147X	Black Toner SP1919		Toners	TOMNGR	George Warehouse	63.00	2.00	
C	Non Serialized Parts	SP19-147C	Cyan Toner - SP1919		Toners	TOMNGR	George Warehouse	5.00	0.00	
C	Non Serialized Parts	SP19-147Y	Yellow Toner - SP1919		Toners	TOMNGR	George Warehouse	20.00	0.00	
C	Non Serialized Parts	SP19-147M	Magenta toner - SP1919		Toners	TOMNGR	George Warehouse	8.00	0.00	
C	Non Serialized Parts	CL-100-965	Cleaner		Stationery	STCOOT	George Warehouse	9.00	0.00	
C	Non Serialized Parts	147-888544	K147 Black toner		Toners	TOMNGR	George Warehouse	1.00	0.00	
C	Non Serialized Parts	K147-888123	K147 Magenta Toner		Toners	TOMNGR	George Warehouse	1.00	2.00	
C	Non Serialized Parts	9855632	Air Freshner		Stationery	STCOOT	George Warehouse	10.00	0.00	
A	Serialized Equipment	SP19-123456	SP19-12 Colour Copier	SP19-12	Hardware	MAMNGR	George Warehouse	1.00	1.00	
C	Non Serialized Parts	12-098765	SP19-12 Black Toner		Toners	TOMNGR	George Warehouse	5.00	0.00	
C	Non Serialized Parts	204-147Y	SP204 Yellow Toner		Toners	TOMNGR	George Warehouse	5.00	0.00	
C	Non Serialized Parts	204-147M	SP204 Magenta Toner		Toners	TOMNGR	George Warehouse	10.00	1.00	
A	Serialized Equipment	MMACH	New Machine		Hardware	MAMNGR	George Warehouse	2.00	0.00	
C	Non Serialized Parts	MMACH001	MMACH Converter		Toners	TOMNGR	George Warehouse	20.00	0.00	

Open Windows | 24 Apr 2018



- In this image you can see that there is:
  - Quantity **1** of SP1919 Sprint Colour MFC in the **George Bin** of Batch (Serial) Number: **19-90200**. and
  - Quantity **1** of SP1919 Sprint Colour MFC in the **George Bin** of Batch (Serial) Number: **1919-9326**.



- **Collapse** the **Stock** frame when you have finished viewing the stock on hand quantities and location of this **A-class** item.

Stock Status - BPO: Version 2.1.0.56 - Example Company

Home Equipment and Locations Contract Finance and HR Inventory Maintenance and Projects Manufacturing Procurement Sales Service Reporting Utilities

Requisition Stock Transfer Stock Adjust Inter Warehouse Request Save Layout Workspaces Durban In Stock Only Refresh Export

Selected Warehouse: Warehouse George Warehouse

Drag a column header here to group by that column

PartType	PartTypeDesc	PartCode	PartName	ModelNo	CategoryDesc	Category	WarehouseName	CurrentStock	ReservedStock	RequisitionedStock
A	Serialized Equipment	SP2020	SP2020 Sprint Colour Mu...	SP2020	Hardware	MAMGR	George Warehouse	1.00	6.00	
C	Non Serialized Parts	2020-147X	Black toner SP2020		Toners	TOMNGR	George Warehouse	8.00	1.00	
A	Serialized Equipment	SP1919	SP1919 Sprint Colour MFC	1919	Hardware	MAMGR	George Warehouse	2.00	0.00	

Stock

BatchNumber	BinName	Quantity
19-90200	George_Bin	1.00
1919-9326	George_Bin	1.00

C	Non Serialized Parts	SP19-147X	Black Toner SP1919		Toners	TOMNGR	George Warehouse	63.00	2.00	
C	Non Serialized Parts	SP19-147C	Cyan Toner - SP1919		Toners	TOMNGR	George Warehouse	5.00	0.00	
C	Non Serialized Parts	SP19-147Y	Yellow Toner - SP1919		Toners	TOMNGR	George Warehouse	20.00	0.00	
C	Non Serialized Parts	SP19-147M	Magenta toner - SP1919		Toners	TOMNGR	George Warehouse	8.00	0.00	
C	Non Serialized Parts	CL-100-965	Cleaner		Stationery	STCOOT	George Warehouse	9.00	0.00	
C	Non Serialized Parts	147-888544	K147 Black toner		Toners	TOMNGR	George Warehouse	1.00	0.00	
C	Non Serialized Parts	K147-888123	K147 Magenta Toner		Toners	TOMNGR	George Warehouse	1.00	2.00	
C	Non Serialized Parts	9855632	Air Freshner		Stationery	STCOOT	George Warehouse	10.00	0.00	
A	Serialized Equipment	SP19-123456	SP19-12 Colour Copier	SP19-12	Hardware	MAMNGR	George Warehouse	1.00	1.00	
C	Non Serialized Parts	12-098765	SP19-12 Black Toner		Toners	TOMNGR	George Warehouse	5.00	0.00	
C	Non Serialized Parts	204-147Y	SP204 Yellow Toner		Toners	TOMNGR	George Warehouse	5.00	0.00	
C	Non Serialized Parts	204-147M	SP204 Magenta Toner		Toners	TOMNGR	George Warehouse	10.00	1.00	
A	Serialized Equipment	MMACH	New Machine		Hardware	MAMNGR	George Warehouse	2.00	0.00	
C	Non Serialized Parts	MMACH01	MMACH Converter		Toners	TOMNGR	George Warehouse	20.00	0.00	

Open Windows 24 Apr 2018



## **VIEW STOCK ON HAND FOR C-CLASS ITEM**

---

- To view the *quantity* and *location* of a **C-Class** item type, click on the *expand* icon in the row of the item that you wish to view.
- In this image an **C-class** item **SP19-147M** Magenta Toner has been selected.

Stock Status - BPO: Version 2.1.0.56 - Example Company

Home Equipment and Locations Contract Finance and HR Inventory Maintenance and Projects Manufacturing Procurement Sales Service Reporting Utilities

Requestion Stock Transfer Stock Adjust Inter Warehouse Request Save Layout Workspaces Durban In Stock Only Refresh Export

Process Format Current Print

Selected Warehouse: Warehouse George Warehouse

Drag a column header here to group by that column

PartType	PartTypeDesc	PartCode	PartName	ModelNo	CategoryDesc	Category	WarehouseName	CurrentStock	ReservedStock	RequisitionedStock
A	Serialized Equipment	SP1919	SP1919 Sprint Colour MFC	1919	Hardware	MAMGR	George Warehouse	2.00	0.00	
C	Non Serialized Parts	SP19-147K	Black Toner - SP1919		Toners	TOMGR	George Warehouse	63.00	2.00	
C	Non Serialized Parts	SP19-147C	Cyan Toner - SP1919		Toners	TOMGR	George Warehouse	5.00	0.00	
C	Non Serialized Parts	SP19-147Y	Yellow Toner - SP1919		Toners	TOMGR	George Warehouse	20.00	0.00	
C	Non Serialized Parts	SP19-147M	Magenta toner - SP1919		Toners	TOMGR	George Warehouse	8.00	0.00	
C	Non Serialized Parts	CL-100-965	Cleaner		Stationery	STCOOT	George Warehouse	9.00	0.00	
C	Non Serialized Parts	147-888544	K147 Black toner		Toners	TOMGR	George Warehouse	1.00	0.00	
C	Non Serialized Parts	K147-888123	K147 Magenta Toner		Toners	TOMGR	George Warehouse	1.00	2.00	
C	Non Serialized Parts	9855632	Air Freshner		Stationery	STCOOT	George Warehouse	10.00	0.00	
A	Serialized Equipment	SP19-123456	SP19-12 Colour Copier	SP19-12	Hardware	MAMGR	George Warehouse	1.00	1.00	
C	Non Serialized Parts	12-098765	SP19-12 Black Toner		Toners	TOMGR	George Warehouse	5.00	0.00	
C	Non Serialized Parts	204-147Y	SP204 Yellow Toner		Toners	TOMGR	George Warehouse	5.00	0.00	
C	Non Serialized Parts	204-147M	SP204 Magenta Toner		Toners	TOMGR	George Warehouse	10.00	1.00	
A	Serialized Equipment	NMACH	New Machine		Hardware	MAMGR	George Warehouse	2.00	0.00	
C	Non Serialized Parts	CONV001	ACDC Converter		Toners	TOMGR	George Warehouse	20.00	0.00	
C	Non Serialized Parts	AzHDB	A4 Drawing Book		Stationery	STCOOT	George Warehouse	5.00	0.00	
C	Non Serialized Parts	SAN	Sanitizer		Spare Parts	SPMGR	George Warehouse	10.00	0.00	

Open Windows 24 Apr 2018

- The **Stock** frame will be expanded.
- This shows a list of:
  - **BatchNumber(s)** of the selected C-Class item if batch tracking is enabled.
  - **Bin Name(s)** where the selected C-class items are stored.
  - **Quantity** of each Batch number in a bin.

**Note** With **C-class** items, there can be **more than one** item per batch number.

Stock Status - BPO: Version 2.1.0.56 - Example Company

Home | Equipment and Locations | Contract | Finance and HR | Inventory | Maintenance and Projects | Manufacturing | Procurement | Sales | Service | Reporting | Utilities

Requestion | Stock Transfer | Stock Adjust | Inter Warehouse Request | Save Layout | Workspaces | Durban | In Stock Only | Refresh | Export

Process | Format | Current | Print

**Selected Warehouse :**

Warehouse: **George Warehouse**

Drag a column header here to group by that column

PartType	PartTypeDesc	PartCode	PartName	ModelNo	CategoryDesc	Category	WarehouseName	CurrentStock	ReservedStock	RequisitionedStock
A	Serialised Equipment	SP 1919	SP1919 Sprint Colour MFC	1919	Hardware	MAMGR	George Warehouse	2.00	0.00	
C	Non Serialised Parts	SP19-147K	Black Toner - SP1919		Toners	TOMGR	George Warehouse	63.00	2.00	
C	Non Serialised Parts	SP19-147C	Cyan Toner - SP1919		Toners	TOMGR	George Warehouse	5.00	0.00	
C	Non Serialised Parts	SP19-147Y	Yellow Toner - SP1919		Toners	TOMGR	George Warehouse	20.00	0.00	
C	Non Serialised Parts	SP19-147M	Magenta toner - SP1919		Toners	TOMGR	George Warehouse	8.00	0.00	

**Stock**

%	BatchNumber	BinName	Quantity
	20160701	George_Bin	8.00

C	Non Serialised Parts	CL-100-965	Cleaner		Stationery	STCOOT	George Warehouse	9.00	0.00	
C	Non Serialised Parts	147-888544	K147 Black toner		Toners	TOMGR	George Warehouse	1.00	0.00	
C	Non Serialised Parts	K147-888123	K147 Magenta Toner		Toners	TOMGR	George Warehouse	1.00	2.00	
C	Non Serialised Parts	9855632	Air Freshner		Stationery	STCOOT	George Warehouse	10.00	0.00	
A	Serialised Equipment	SP19-123456	SP19-12 Colour Copier	SP19-12	Hardware	MAMGR	George Warehouse	1.00	1.00	
C	Non Serialised Parts	12-098765	SP19-12 Black Toner		Toners	TOMGR	George Warehouse	5.00	0.00	
C	Non Serialised Parts	204-147Y	SP204 Yellow Toner		Toners	TOMGR	George Warehouse	5.00	0.00	
C	Non Serialised Parts	204-147M	SP204 Magenta Toner		Toners	TOMGR	George Warehouse	10.00	1.00	
A	Serialised Equipment	1MACH	New Machine		Hardware	MAMGR	George Warehouse	2.00	0.00	
C	Non Serialised Parts	CONV001	ACDC Converter		Toners	TOMGR	George Warehouse	20.00	0.00	
C	Non Serialised Parts	Az4DB	A4 Drawing Book		Stationery	STCOOT	George Warehouse	5.00	0.00	
C	Non Serialised Parts	SAN	Sanitizer		Spare Parts	SPMGR	George Warehouse	10.00	0.00	

Open Windows | 24 Apr 2018

- In this image, there are Quantity **8** of Magenta Toners of Batch Number: **20160701** in the **George Bin**.

Stock Status - BPO: Version 2.1.0.56 - Example Company

Home | Equipment and Locations | Contract | Finance and HR | Inventory | Maintenance and Projects | Manufacturing | Procurement | Sales | Service | Reporting | Utilities

Requestion | Stock Transfer | Stock Adjust | Inter Warehouse Request | Save Layout | Workspaces | Durban | In Stock Only | Refresh | Export

Process | Format | Current | Print

**Selected Warehouse :**

Warehouse: **George Warehouse**

Drag a column header here to group by that column

PartType	PartTypeDesc	PartCode	PartName	ModelNo	CategoryDesc	Category	WarehouseName	CurrentStock	ReservedStock	RequisitionedStock						
A	Serialised Equipment	SP 1919	SP1919 Sprint Colour MFC	1919	Hardware	MAMGR	George Warehouse	2.00	0.00							
C	Non Serialised Parts	SP19-147K	Black Toner SP1919		Toners	TOMGR	George Warehouse	63.00	2.00							
C	Non Serialised Parts	SP19-147C	Cyan Toner - SP1919		Toners	TOMGR	George Warehouse	5.00	0.00							
C	Non Serialised Parts	SP19-147Y	Yellow Toner - SP1919		Toners	TOMGR	George Warehouse	20.00	0.00							
C	Non Serialised Parts	SP19-147M	Magenta toner - SP1919		Toners	TOMGR	George Warehouse	8.00	0.00							
<p>Stock</p> <table border="1"> <thead> <tr> <th>BatchNumber</th> <th>BinName</th> <th>Quantity</th> </tr> </thead> <tbody> <tr> <td>20160701</td> <td>George_Bin</td> <td>8.00</td> </tr> </tbody> </table>											BatchNumber	BinName	Quantity	20160701	George_Bin	8.00
BatchNumber	BinName	Quantity														
20160701	George_Bin	8.00														
C	Non Serialised Parts	CL-100-965	Cleaner		Stationery	STCOOT	George Warehouse	9.00	0.00							
C	Non Serialised Parts	147-888544	K147 Black toner		Toners	TOMGR	George Warehouse	1.00	0.00							
C	Non Serialised Parts	K147-888123	K147 Magenta Toner		Toners	TOMGR	George Warehouse	1.00	2.00							
C	Non Serialised Parts	9855632	Air Freshner		Stationery	STCOOT	George Warehouse	10.00	0.00							
A	Serialised Equipment	SP19-123456	SP19-12 Colour Copier	SP19-12	Hardware	MAMGR	George Warehouse	1.00	1.00							
C	Non Serialised Parts	12-098765	SP19-12 Black Toner		Toners	TOMGR	George Warehouse	5.00	0.00							
C	Non Serialised Parts	204-147Y	SP204 Yellow Toner		Toners	TOMGR	George Warehouse	5.00	0.00							
C	Non Serialised Parts	204-147M	SP204 Magenta Toner		Toners	TOMGR	George Warehouse	10.00	1.00							
A	Serialised Equipment	1MACH	New Machine		Hardware	MAMGR	George Warehouse	2.00	0.00							
C	Non Serialised Parts	CONV001	ACDC Converter		Toners	TOMGR	George Warehouse	20.00	0.00							
C	Non Serialised Parts	Az4DB	A4 Drawing Book		Stationery	STCOOT	George Warehouse	5.00	0.00							
C	Non Serialised Parts	SAN	Sanitizer		Spare Parts	SPMGR	George Warehouse	10.00	0.00							

Open Windows | 24 Apr 2018

- **Collapse** the **Stock** frame when you have finished viewing the stock on hand quantities and location of this **C-class** item.



Stock Status - BPO: Version 2.1.0.56 - Example Company

Home | Equipment and Locations | Contract | Finance and HR | Inventory | Maintenance and Projects | Manufacturing | Procurement | Sales | Service | Reporting | Utilities

Requestion | Stock Transfer | Stock Adjust | Inter Warehouse Request | Save Layout | Workspaces | Durban | In Stock Only | Refresh | Export

Process | Format | Current | Print

**Selected Warehouse :**

Warehouse: **George Warehouse**

Drag a column header here to group by that column

PartType	PartTypeDesc	PartCode	PartName	ModelNo	CategoryDesc	Category	WarehouseName	CurrentStock	ReservedStock	RequisitionedStock						
A	Serialised Equipment	SP 1919	SP1919 Sprint Colour MFC	1919	Hardware	MAMGR	George Warehouse	2.00	0.00							
C	Non Serialised Parts	SP19-147K	Black Toner - SP1919		Toners	TOMGR	George Warehouse	63.00	2.00							
C	Non Serialised Parts	SP19-147C	Cyan Toner - SP1919		Toners	TOMGR	George Warehouse	5.00	0.00							
C	Non Serialised Parts	SP19-147Y	Yellow Toner - SP1919		Toners	TOMGR	George Warehouse	20.00	0.00							
C	Non Serialised Parts	SP19-147M	Magenta toner - SP1919		Toners	TOMGR	George Warehouse	8.00	0.00							
<p>Stock</p> <table border="1"> <thead> <tr> <th>BatchNumber</th> <th>BinName</th> <th>Quantity</th> </tr> </thead> <tbody> <tr> <td>20160701</td> <td>George_Bin</td> <td>8.00</td> </tr> </tbody> </table>											BatchNumber	BinName	Quantity	20160701	George_Bin	8.00
BatchNumber	BinName	Quantity														
20160701	George_Bin	8.00														
C	Non Serialised Parts	CL-100-965	Cleaner		Stationery	STCOOT	George Warehouse	9.00	0.00							
C	Non Serialised Parts	147-888544	K147 Black toner		Toners	TOMGR	George Warehouse	1.00	0.00							
C	Non Serialised Parts	K147-888123	K147 Magenta Toner		Toners	TOMGR	George Warehouse	1.00	2.00							
C	Non Serialised Parts	9855632	Air Freshner		Stationery	STCOOT	George Warehouse	10.00	0.00							
A	Serialised Equipment	SP19-123456	SP19-12 Colour Copier	SP19-12	Hardware	MAMGR	George Warehouse	1.00	1.00							
C	Non Serialised Parts	12-098765	SP19-12 Black Toner		Toners	TOMGR	George Warehouse	5.00	0.00							
C	Non Serialised Parts	204-147Y	SP204 Yellow Toner		Toners	TOMGR	George Warehouse	5.00	0.00							
C	Non Serialised Parts	204-147M	SP204 Magenta Toner		Toners	TOMGR	George Warehouse	10.00	1.00							
A	Serialised Equipment	1MACH	New Machine		Hardware	MAMGR	George Warehouse	2.00	0.00							
C	Non Serialised Parts	CONV001	ACDC Converter		Toners	TOMGR	George Warehouse	20.00	0.00							
C	Non Serialised Parts	Az4DB	A4 Drawing Book		Stationery	STCOOT	George Warehouse	5.00	0.00							
C	Non Serialised Parts	SAN	Sanitizer		Spare Parts	SPMGR	George Warehouse	10.00	0.00							

Open Windows | 24 Apr 2018

MNU.037.008