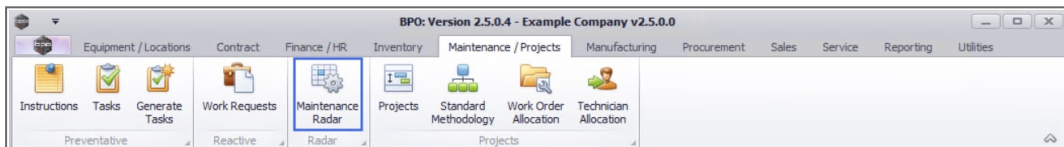


# MAINTENANCE

## MAINTENANCE RADAR – VIEW ASSET DETAIL


This functionality enables you to view the **details** of an asset linked to a **task**.

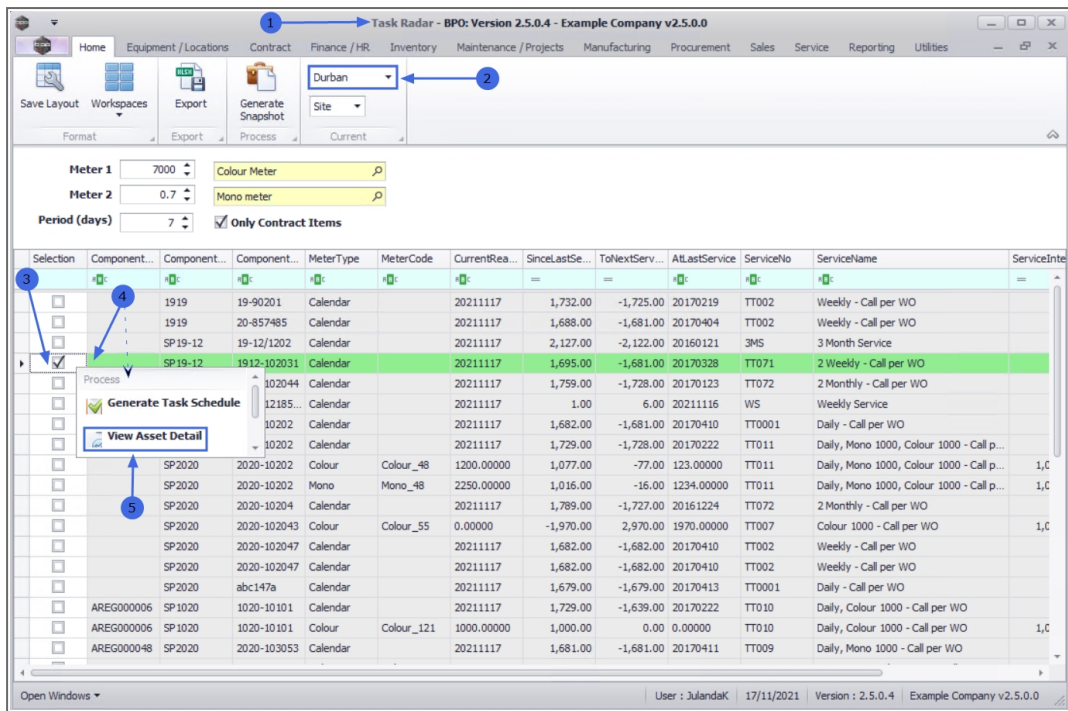
**Ribbon Access:** *Maintenance / Projects > Maintenance Radar*



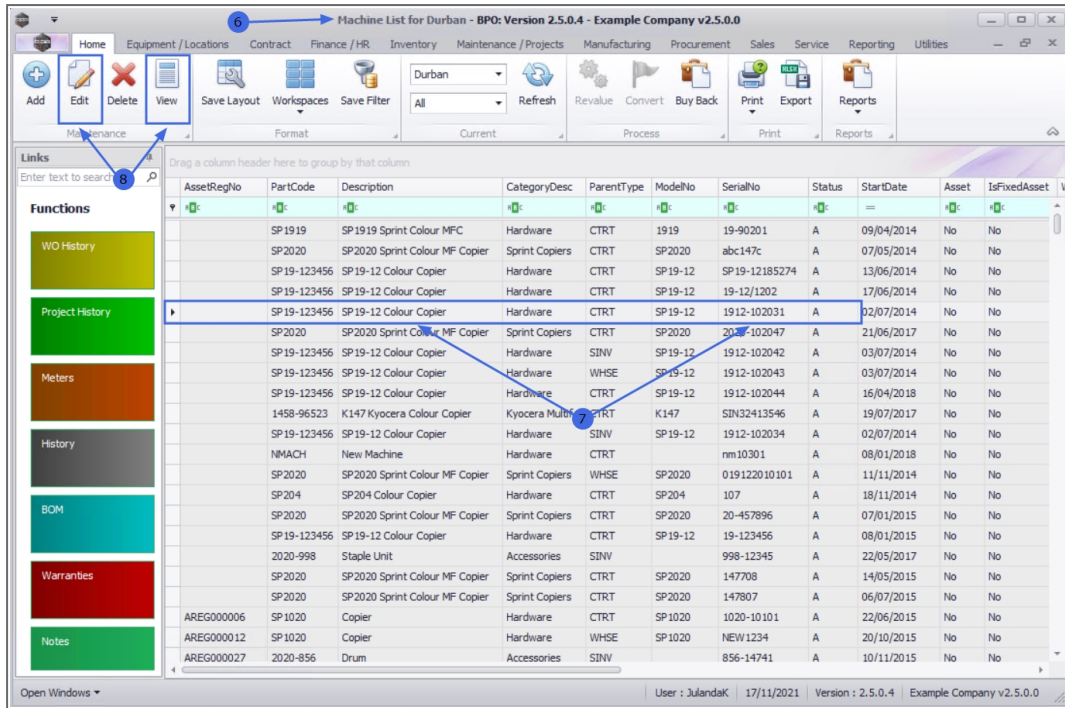
1. The **Task Radar** screen will be displayed.
2. Select the **Site** you wish to work in.
  - The example has **Durban** selected.

Refer to [Maintenance Radar - Generate Snapshot](#) for details on how to populate the due task list.

3. On the task list screen click on the **check box** of the **item** you wish to view asset detail for.
4.  **Right click** in the **same row** to display the **Process** menu .
5. Click on **View Asset Detail**.



6. The **Machine List for [site name]** screen will be displayed.
7. You will land on the **row** of the **serial number** you have selected to view.
8. You may now choose to either **View** or **Edit** the asset.



9. The **Equipment Maintenance for Serial No: [serial number]** screen will be displayed.
10. From here you can view the asset **Details** for the asset.
11. Click on the **Finance, Other Data** or **User Defined** tabs to view further information for the asset.
12. The **Functions** tiles will direct you to more details for the asset e.g. **Warranty** or **Meter** information.
13. Click on **Back** to return to the **Machine List** screen.

Refer to [Introduction to Assets](#) for more detailed information about Assets.

**Equipment Maintenance for Serial No : 1912-102031 - BPO: Version 2.5.0.4 - Example Company v2.5.0.0**

**Navigation:** Home | Equipment / Locations | Contract | Finance / HR | Inventory | Maintenance / Projects | Manufacturing | Procurement | Sales | Service | Reporting | Utilities

**Functions:** WO History, Project History, Meters, History, BOM, Warranties (1), Notes

**Asset Information:**

- Branch: Durban
- Serial No: 1912-102031
- Asset Reg No: [Empty]
- Customer: Samantha Diner
- Address: [Empty]
- Technician: [Empty]
- Start Date: 02/07/2014
- Priority: 3
- SLA Hours: 0
- Part No: SP19-123456
- Model No: SP19-12
- Category: Hardware
- Contract: CO0000018
- Customer Name: Samantha Diner
- Loan Unit:
- WO Default Item:
- In Service:
- WO Notification:
- Rotable:
- Tasks:

**Finance Section:**

- Cost: 14500
- Replacement Cost: 14500
- Is Financed:
- Finance Co: [Empty]
- Finance Type: [Empty]
- Payment Type: [Empty]
- Payment Day: 0
- Payment Amount: 0
- Payment Start: 01/01/1900
- Payment End: 01/01/1900
- Is Escalated:
- Escalation Amount: 0
- Escalation Period: 0
- Travel Distance: 0
- Travel Rate: 0
- Refurbishment Date: 01/01/1900
- Depreciation Start: 02/07/2014
- Useful Life: 60
- Is Fixed Asset:
- Operational Status: [Empty]

**Footer:** User : JulandaK | 17/11/2021 | Version : 2.5.0.4 | Example Company v2.5.0.0

MNU.040.002