

# MAINTENANCE

## GENERATE TASKS

The task generator will create work orders for tasks that are due, up until the **Generate Until** specified.

Depending on the task setup, the system will generate the work orders as follows:

- Stand-alone **work order**<sup>1</sup> which can manually be linked to an existing project or call, if required.
- Create a call and underlying **work order**<sup>2</sup>.
- Create a project and underlying **work order**<sup>3</sup>.

The date of the work order generated will be the scheduled **due date** of the task. (The **Maintenance Radar** will set the call and work order date to the date run).

This may differ depending on;

- whether the task is configured to allow tolerance and a tolerance percentage is set, or
- if the asset / location generation methodology is configured to not include public holidays and / or weekends or specifies a specific day of the week, or a specific week of the year.

---

**Ribbon Access:** *Maintenance / Projects > Generate Tasks*

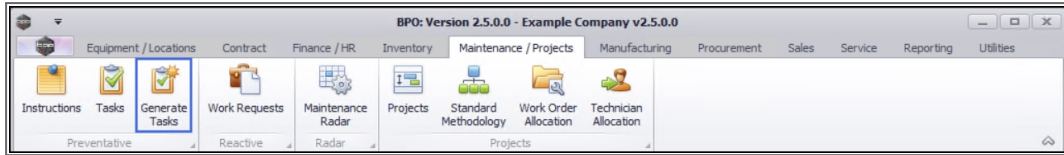
---

---

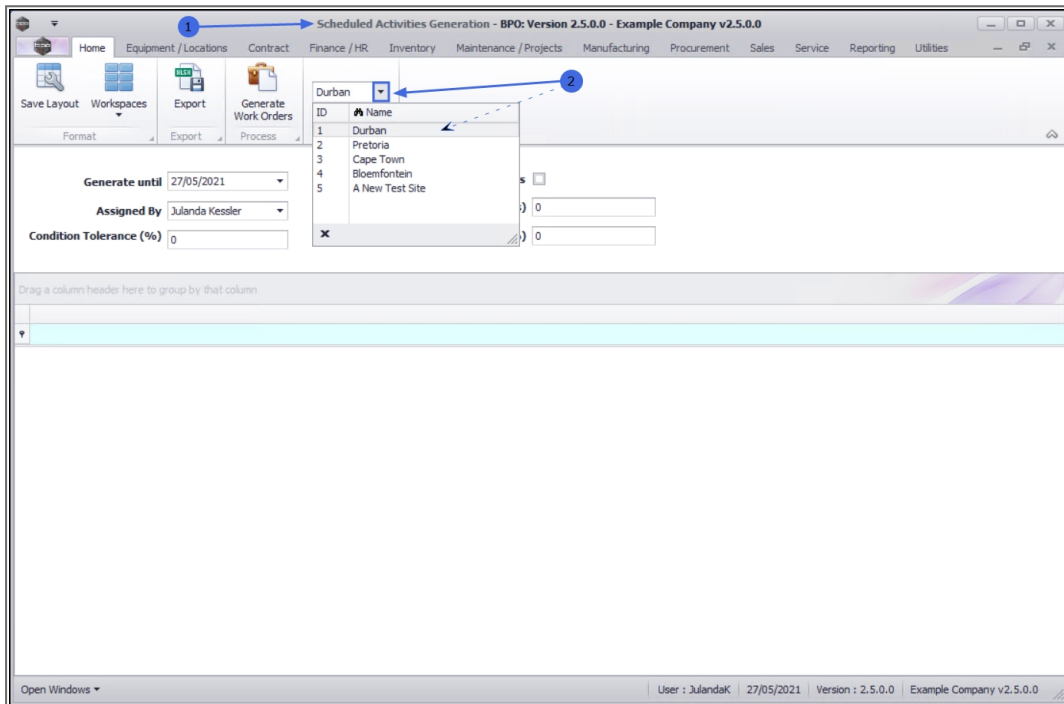
<sup>1</sup>Create Project on Generation and Create Call flags not set.

<sup>2</sup>Create Call flag is set.

<sup>3</sup>Create Project on Generation flag is set.



1. The **Scheduled Activities Generation** screen will be displayed.
2. Select the **Site** you wish to generate scheduled activities for by clicking on the down **arrow** to display the site list.
  - The example has **Durban** selected.



## SCHEDULE THE ACTIVITIES

- **Generate until:** Click in the text box to **type** in , or click on the down **arrow** to use the calendar function to select the date this scheduled activity generation needs to continue until, e.g. today, a week, month or year from now.

- **Assigned By:** This field will auto populate with the person currently logged on to the system. Click on the down **arrow** to select an alternative employee from the list, if required.
- **Condition Tolerance<sup>1</sup> (%)**: Click in the text box to **type** in the tolerance (in percentage value) within which the task can be performed, without affecting the next due execution point. This can be left as 0 (zero).
- **Only Contract Items:** Click in the **check box** if you wish this scheduled activity generation to only apply to contract items.
- **Extrapolation Period (days):** Click in the text box to type in the **number of days** into the future to generate time-based tasks. When it is set to 0 (zero), tasks will be generated up until the current day. Set a value to generate future time-based tasks, e.g. prepare and schedule maintenance required for the week ahead.
- **Process Tolerance (%)<sup>2</sup>:** Click in the text box to **type** in the tolerance (in percentage value) within which the task can be performed without affecting the next due execution point. This field can be left as 0 (zero).

## GENERATE WORK ORDERS

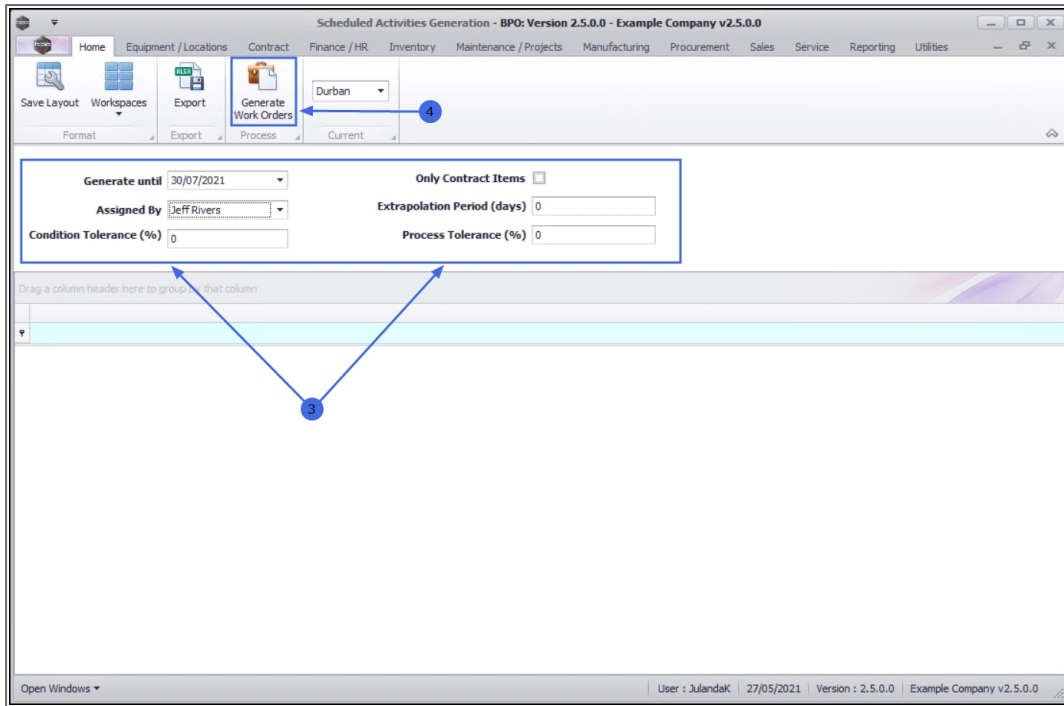
---

4. Click on the **Generate Work Orders** button.

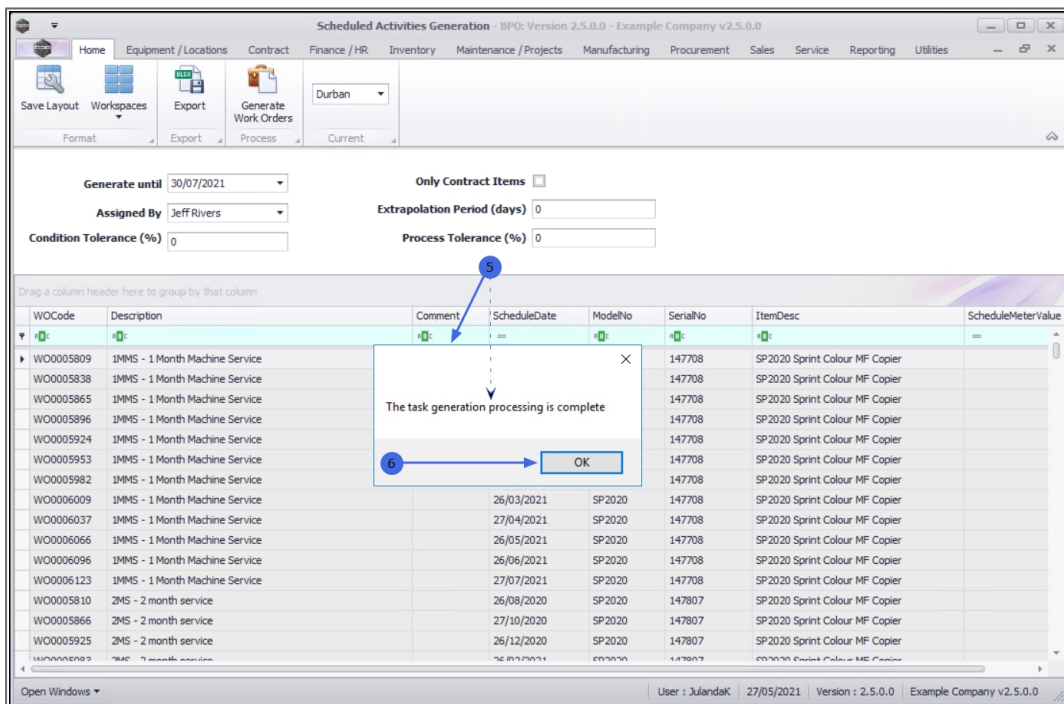
---

<sup>1</sup>The condition tolerance is related to the maintenance methodology for meter-based tasks.

<sup>2</sup>The Process Tolerance is related to the maintenance methodology for Time Based tasks.



5. When you receive the message confirming that;
  - **The task generation processing is completed.**
6. Click on **OK**.



- The generated list of tasks with Work Orders can be viewed in the scheduled activities grid.



**Note** that one work order will be created for each task that has not yet been generated, up until (and including) the date selected.

## EXPORT TO MICROSOFT EXCEL

- Click on **Export** to export the list of scheduled activities to a Microsoft Excel Spreadsheet.
- When you have completed the Task Generation, click on **Close**.

WOCODE	Description	Comment	ScheduleDate	ModelNo	SerialNo	ItemDesc	ScheduleMeterValue
WO0005809	1MMS - 1 Month Machine Service		26/08/2020	SP2020	147708	SP2020 Sprint Colour MF Copier	
WO0005838	1MMS - 1 Month Machine Service		26/09/2020	SP2020	147708	SP2020 Sprint Colour MF Copier	
WO0005865	1MMS - 1 Month Machine Service		27/10/2020	SP2020	147708	SP2020 Sprint Colour MF Copier	
WO0005896	1MMS - 1 Month Machine Service		26/11/2020	SP2020	147708	SP2020 Sprint Colour MF Copier	
WO0005924	1MMS - 1 Month Machine Service		26/12/2020	SP2020	147708	SP2020 Sprint Colour MF Copier	
WO0005953	1MMS - 1 Month Machine Service		26/01/2021	SP2020	147708	SP2020 Sprint Colour MF Copier	
WO0005982	1MMS - 1 Month Machine Service		26/02/2021	SP2020	147708	SP2020 Sprint Colour MF Copier	
WO0006009	1MMS - 1 Month Machine Service		26/03/2021	SP2020	147708	SP2020 Sprint Colour MF Copier	
WO0006037	1MMS - 1 Month Machine Service		27/04/2021	SP2020	147708	SP2020 Sprint Colour MF Copier	
WO0006066	1MMS - 1 Month Machine Service		26/05/2021	SP2020	147708	SP2020 Sprint Colour MF Copier	
WO0006096	1MMS - 1 Month Machine Service		26/06/2021	SP2020	147708	SP2020 Sprint Colour MF Copier	
WO0006123	1MMS - 1 Month Machine Service		27/07/2021	SP2020	147708	SP2020 Sprint Colour MF Copier	
WO0005810	2MS - 2 month service		26/08/2020	SP2020	147807	SP2020 Sprint Colour MF Copier	
WO0005866	2MS - 2 month service		27/10/2020	SP2020	147807	SP2020 Sprint Colour MF Copier	
WO0005925	2MS - 2 month service		26/12/2020	SP2020	147807	SP2020 Sprint Colour MF Copier	

## Related Topics

- [Edit Work Order](#)
- [Link a Work Order to a current Project](#)
- [Link a Work Order to a new Project](#)
- Link a Work Order to a Call

- [Work Order Allocations](#)
- [View task generated Project](#)
- View task generated Call

MNU.040.006