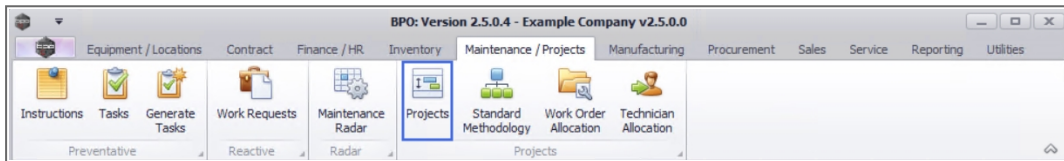


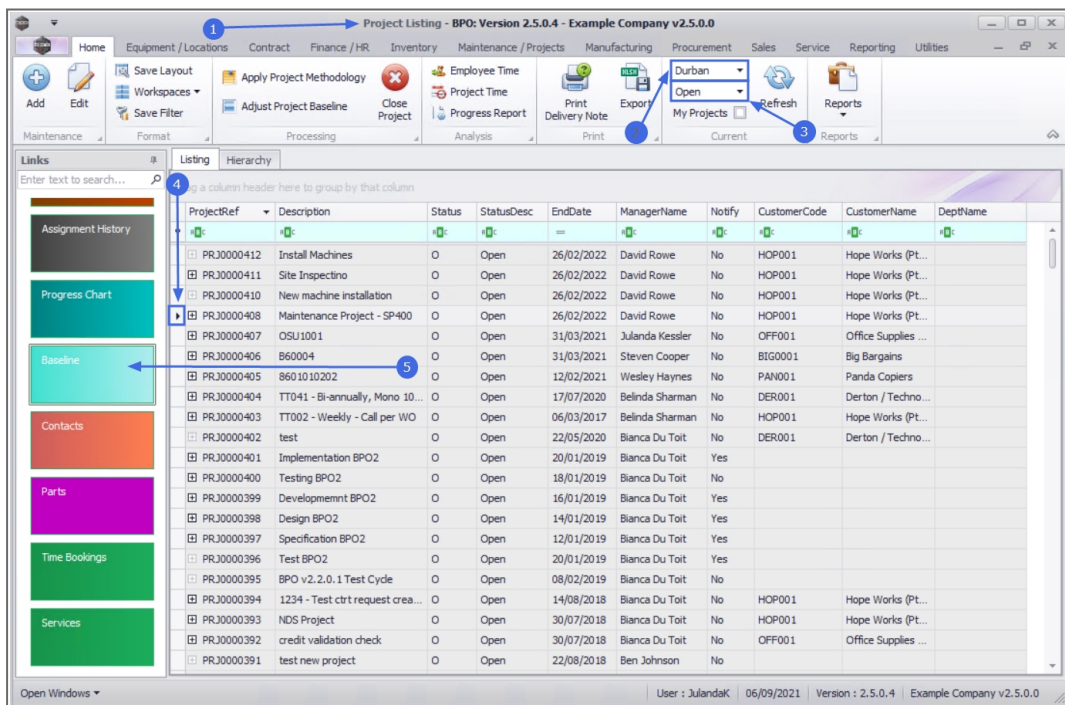
# PROJECTS

## PROJECTS - BASELINE

*Ribbon Access: Maintenance / Projects > Projects*



1. The **Project Listing** screen will be displayed.
2. Select the **Site** where the project can be located.
  - The example has **Durban** selected.
3. Select the Status for the project.
  - The example has **Open** selected.
4. Click on the **row** of the project that you wish to view the baseline for.
5. Click on the **Baseline** tile.



7. The **Baseline Adjustments for Project : [project ref number]** screen will be displayed.
8. From this screen you will be able to view the project baseline adjustments made to the selected project.
  - **Prior Start** and **Prior End Date** reflect the original start and end date for the project.
  - The **Baseline Adjustment** column reflect the baseline adjustment days that were made to the project.
  - **New Start** and **New End Dates** reflect the updated project end date after the baseline adjustment days have been updated.
  - **Full Name** column will display the name of the employee, normally the project manager that made the project adjustment. The date and time that the adjustment was made will reflect in the **Create Date** column.
9. If you need to make an adjustment to the selected project, click on **Add**.  
"The Baseline Adjustment screen will be displayed." on page 2
10. Click on **Back** to return to the **Project Listing** screen.

Baseline Adjustments for Project : PRJ0000408 - BPO: Version 2.5.0.4 - Example Company v2.5.0.0

Home | Equipment / Locations | Contract | Finance / HR | Inventory | Maintenance / Projects | Manufacturing | Procurement | Sales | Service | Reporting | Utilities

+ Add | ← Back | 📄 Save Layout | 📄 Workspaces | 🔄 Refresh

Processing | Filter | Sort | Curr...

9 column header here to group by that column

PriorStartDate	PriorEndDate	BaselineAdjustment	NewStartDate	NewEndDate	FullName	CreateDate
28/07/2021	27/08/2021	2	28/07/2021	29/08/2021	Julanda Kessler	Aug 10 2021 3:50PM
28/07/2021	29/10/2021	120	28/07/2021	26/02/2022	Julanda Kessler	Sep 6 2021 2:18PM

8

Open Windows | User : JulandaK | 06/09/2021 | Version : 2.5.0.4 | Example Company v2.5.0.0

MNU.058.056

