

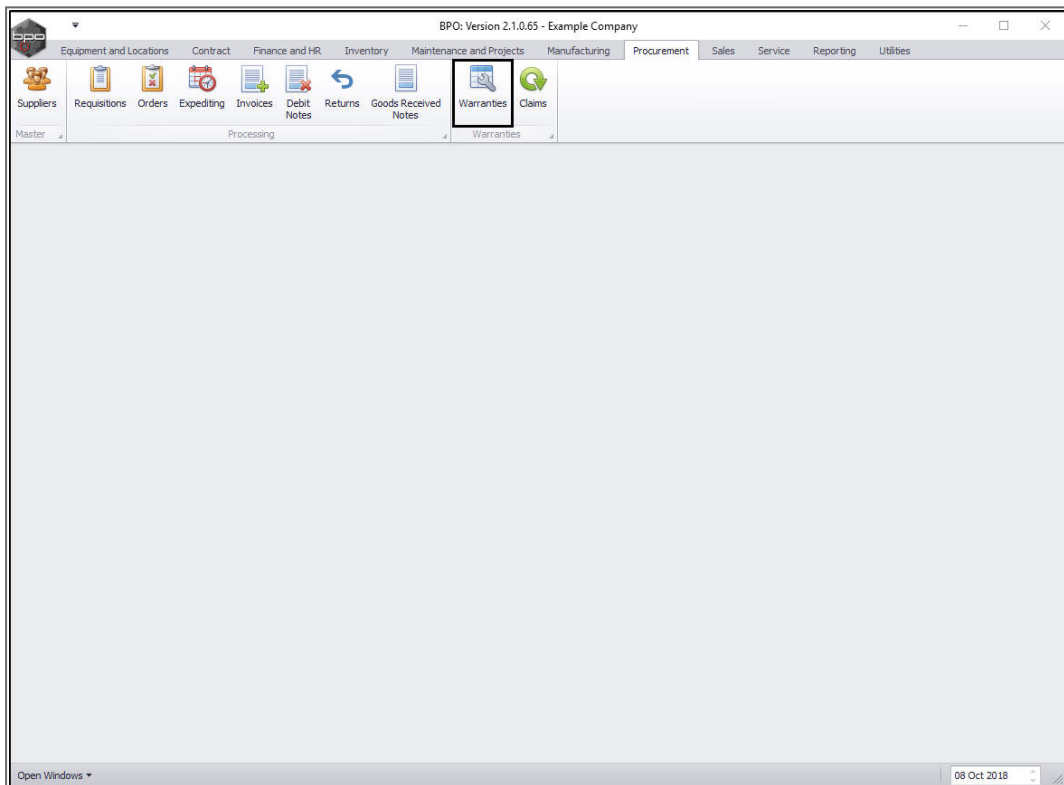
# PROCUREMENT

## VIEW ACTIVE WARRANTIES

In the Warranties listing screen you can view all the **Active** and **Expired** warranties on the system.

You can also use the Functions tiles to view the **Linked Items** and **Warranty Claims**.

**Ribbon Access:** *Procurement > Warranties*



- The **Warranties** listing screen will be displayed.

Select the Status

- Select the **status**.
  - This should be set to **Active**.

WarrantyCode	Description	TypeDesc	WarrantyPeriod	PeriodTypeDesc	MeterUnits	UnitTypeDesc	MetersAggregated	Status
24MSW	24 Month Supplier Warranty	Supplier Warranty	24 Months		10000	Copies made	No	A
12MSW	12 Month Supplier Warranty	Supplier Warranty	12 Months		50000	Copies made	No	A
1YSW	1 Year Supplier Warranty	Supplier Warranty	1 Years		56000	Copies made	Yes	A
3MSW	3 Months Service Warranty	Supplier Warranty	6 Months		50000	Copies made	No	A
wct	warranty code test	Supplier Warranty	500 Months		0		No	A
RET3	Retest	Supplier Warranty	1 Years		10000		Yes	A
TES	Testing	Supplier Warranty	2 Months		5000	Copies made	No	A
TES1	TEST	Supplier Warranty	6 Months		0		No	A
F1YW	Full 1 Yr Warranty - Unit and Parts	Supplier Warranty	1 Years		50000	Copies made	No	A
6MSW	Six Month Supplier Warranty	Supplier Warranty	6 Months		5000	Copies made	No	A

## VIEW ACTIVE WARRANTIES

- Click on the **row selector** in front of the **warranty** that you wish to view the details of.
- Click on **View**.

WarrantyCode	Description	TypeDesc	WarrantyPeriod	PeriodTypeDesc	MeterUnits	UnitTypeDesc	MetersAggregated	Status
24MSW	24 Month Supplier Warranty	Supplier Warranty	24 Months	12 Months	10000	Copies made	No	A
12MSW	12 Month Supplier Warranty	Supplier Warranty	12 Months	12 Months	50000	Copies made	No	A
1YSW	1 Year Supplier Warranty	Supplier Warranty	1 Years	1 Years	56000	Copies made	Yes	A
3MSW	3 Months Service Warranty	Supplier Warranty	6 Months	6 Months	50000	Copies made	No	A
wct	warranty code test	Supplier Warranty	500 Months	500 Months	0		No	A
RET3	Retest	Supplier Warranty	1 Years	1 Years	10000		Yes	A
TES	Testing	Supplier Warranty	2 Months	2 Months	5000	Copies made	No	A
TES1	TEST	Supplier Warranty	6 Months	6 Months	0		No	A
F1YW	Full 1 Yr Warranty - Unit and Parts	Supplier Warranty	1 Years	1 Years	50000	Copies made	No	A
6MSW	Six Month Supplier Warranty	Supplier Warranty	6 Months	6 Months	5000	Copies made	No	A

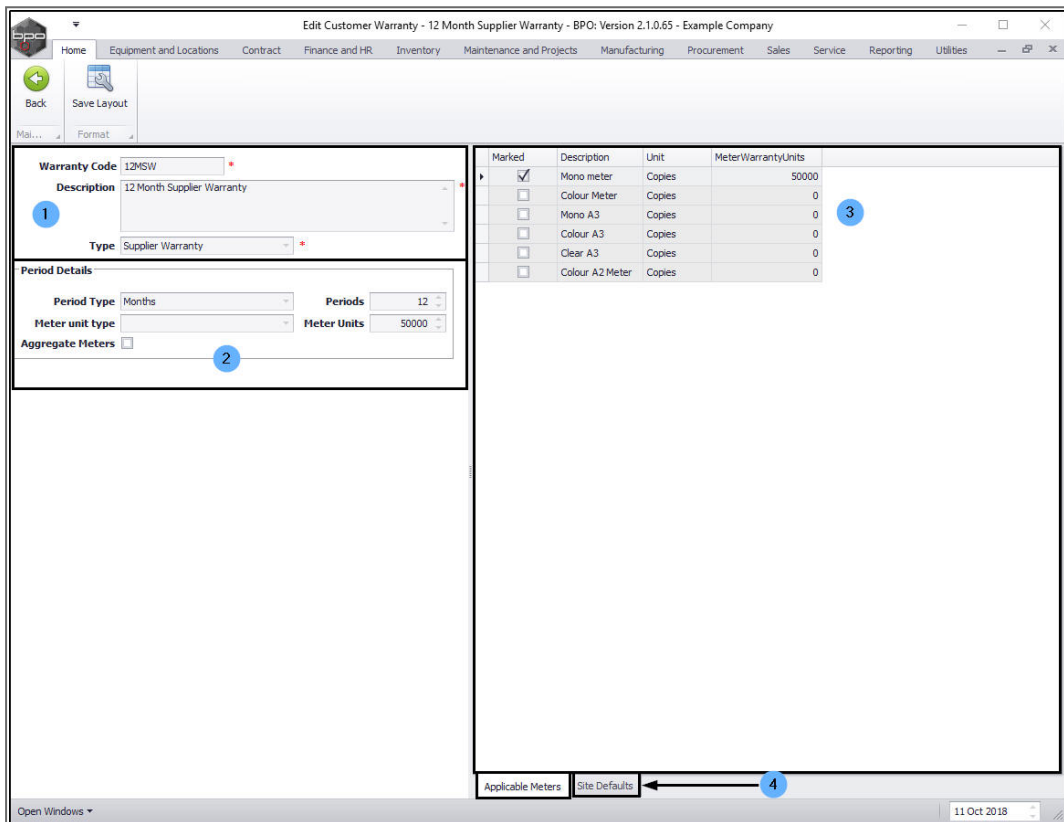
The **Edit Customer Warranty** screen will be displayed. (This is a view only screen, there is no Save button, only contains a **Back** button - so it is not editable).

## VIEW ACTIVE WARRANTY DETAILS, PERIOD DETAILS AND APPLICABLE METERS

Here you can view:

- The **Warranty** details frame which contains:
  - Warranty Code
  - Warranty Description and
  - Type
- The **Period Details** frame, which contains:

- Period Type
  - Periods
  - Meter unit type
  - Meter Units
  - Aggregate Meters (flag - checkbox)
3. The **Applicable Meters** frame which contains:
- Details of the meters linked to this warranty.
4. Click on the **Site Defaults** tab.

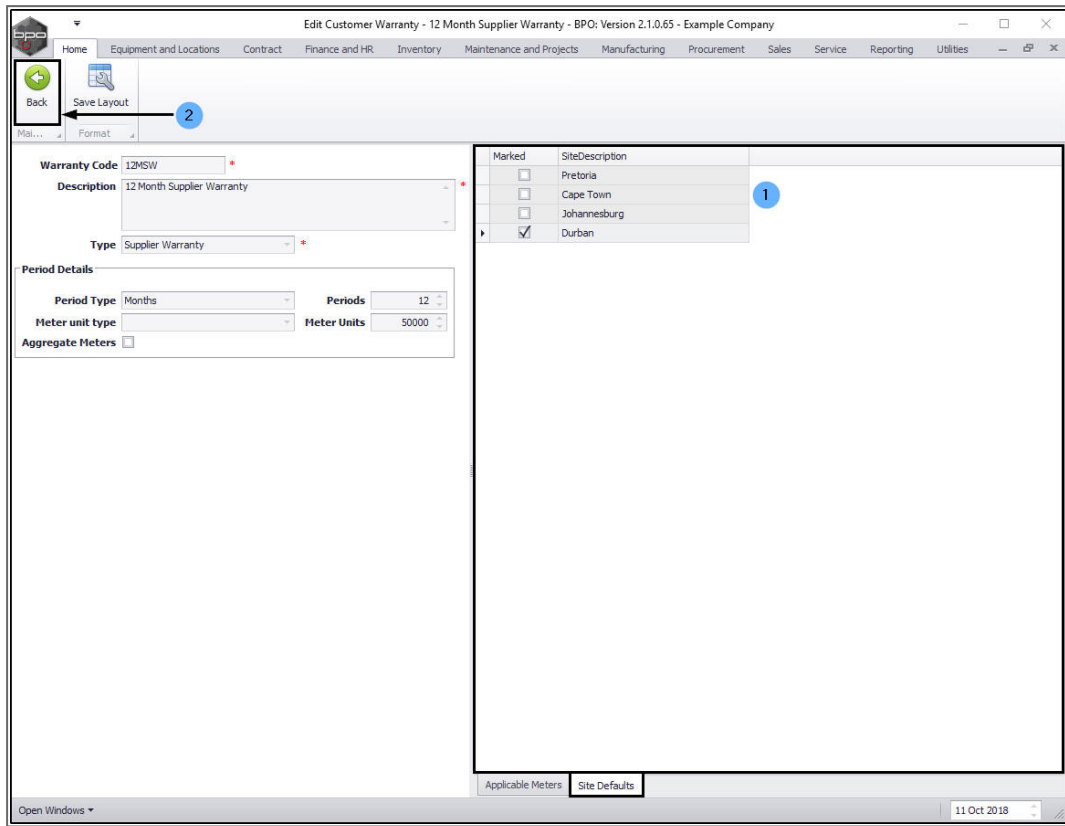


## VIEW ACTIVE WARRANTY SITE DEFAULTS

The **Site Defaults** frame will be brought to the fore.

Here you can view:

1. Which sites this warranty is linked to.
2. Click on **Back** to return to the **Warranties** listing screen.



## VIEW LINKED ITEMS

In the Active **Warranties** listing frame,

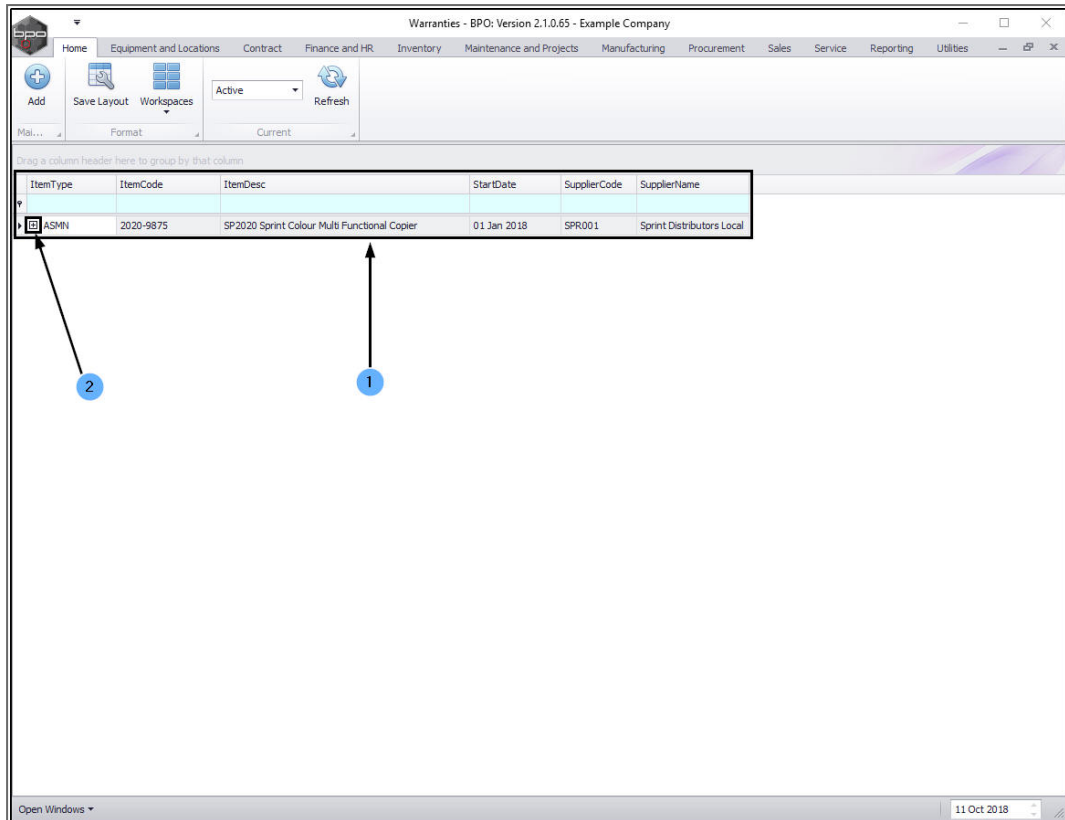
- Click on the **row selector** in front of the **warranty** that you wish to view the **linked items** of.
- Click on the **Linked Items** tile.

WarrantyCode	Description	TypeDesc	WarrantyPeriod	PeriodTypeDesc	MeterUnits	UnitTypeDesc	MetersAggregated	Status
24MSW	24 Month Supplier Warranty	Supplier Warranty	24 Months		10000	Copies made	No	A
12MSW	12 Month Supplier Warranty	Supplier Warranty	12 Months		50000	Copies made	No	A
1YSW	1 Year Supplier Warranty	Supplier Warranty	1 Years		56000	Copies made	Yes	A
3MSW	3 Months Service Warranty	Supplier Warranty	6 Months		50000	Copies made	No	A
wct	warranty code test	Supplier Warranty	500 Months		0		No	A
RET3	Retest	Supplier Warranty	1 Years		10000		Yes	A
TES	Testing	Supplier Warranty	2 Months		5000	Copies made	No	A
TES1	TEST	Supplier Warranty	6 Months		0		No	A
F1YW	Full 1 Yr Warranty - Unit and Parts	Supplier Warranty	1 Years		50000	Copies made	No	A
6MSW	Six Month Supplier Warranty	Supplier Warranty	6 Months		5000	Copies made	No	A

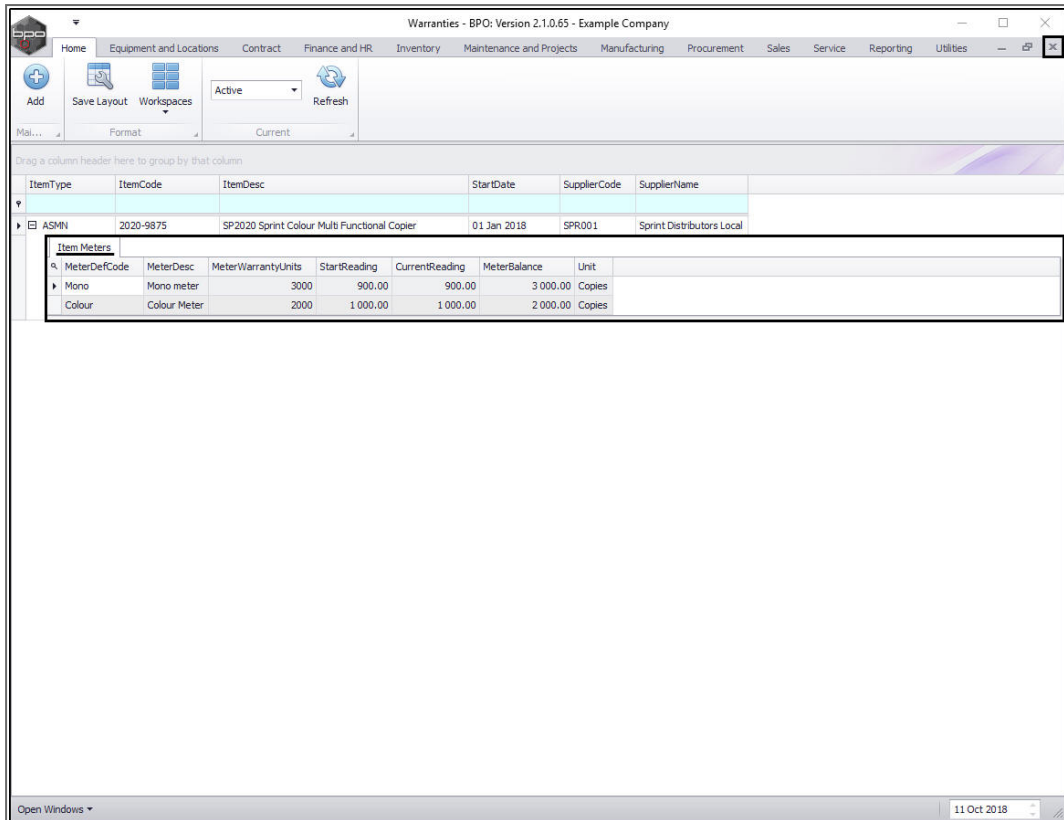
1. The **Warranties** screen will now display a list of the **Item Type(s)**, **Code(s)** and **Description(s)** linked to the selected warranty. You can also view the **Start Date**, **Supplier Code** and **Supplier Name**.

## VIEW LINKED ITEM METERS

2. Click on the **expand** button in the row of a selected item.



- The **Item Meters** frame will be expanded.
  - Here you can view the linked item meters and their **Warranty Units, Readings** and **Meter Balance**.
- Close the screen to return to the **Warranties** listing screen.



ItemType	ItemCode	ItemDesc	StartDate	SupplierCode	SupplierName
ASMN	2020-9875	SP2020 Sprint Colour Multi Functional Copier	01 Jan 2018	SPR001	Sprint Distributors Local

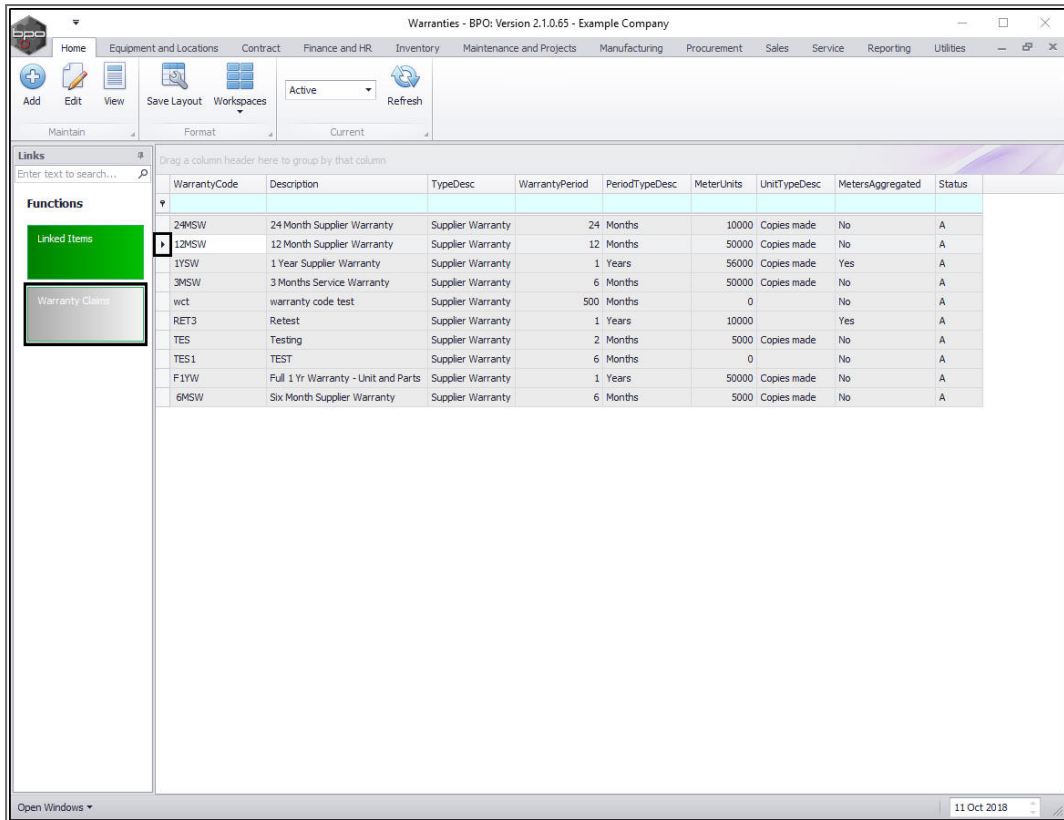
MeterDefCode	MeterDesc	MeterWarrantyUnits	StartReading	CurrentReading	MeterBalance	Unit
Mono	Mono meter	3000	900.00	900.00	3 000.00	Copies
Colour	Colour Meter	2000	1 000.00	1 000.00	2 000.00	Copies

## VIEW WARRANTY CLAIMS

In the Active **Warranties** listing frame,

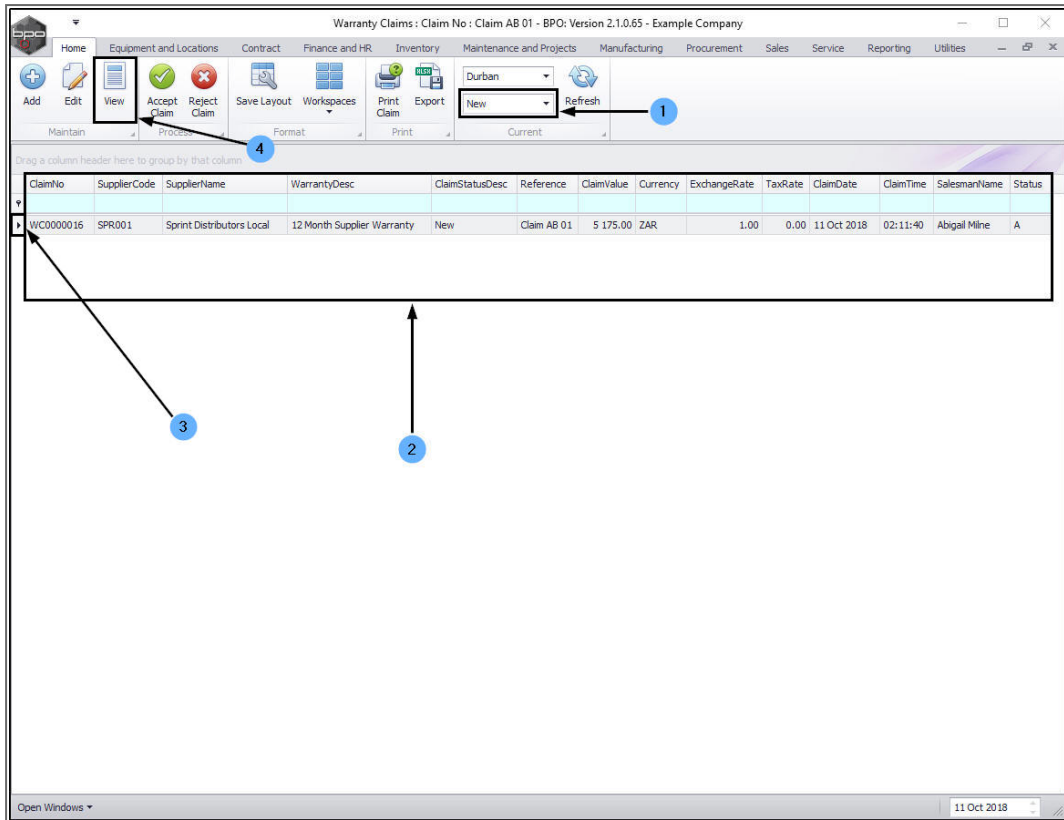
- Click on the **row selector** in front of the **warranty** that you wish to view the **warranty claims** of.
- Click on the **Warranty Claims** tile.





The **Warranty Claims** screen will be displayed.

1. This will open in the **New** status.
2. Here you can view a list of claims linked to this warranty type.
3. Click on the **row selector** in front of the warranty claim you wish to view.
4. Click on **View**.



The **View Claim - [ ]** screen will be displayed.

Here you can view details regarding:

1. The **Supplier** linked to this warranty claim.
2. The linked **Addresses** and **Related References** (linked to a Call or Contract etc).
3. The **equipment item** linked to this warranty claim.
4. Click on **Back** to return to the **Warranty Claims** screen.

The screenshot shows the 'View Claim' interface for a Sprint Colour Multi Functional Copier. The title bar indicates 'View Claim - WC0000016 - BPC: Version 2.1.0.65 - Example Company'. The interface is divided into several sections:

- Navigation:** Home, Equipment and Locations, Contract, Finance and HR, Inventory, Maintenance and Projects, Manufacturing, Procurement, Sales, Service, Reporting, Utilities.
- Form Fields:**
  - Supplier:** Sprint Distributors Local
  - Warranty Desc:** 12 Month Supplier Warranty
  - Claim Status:** New
  - Salesman:** Abigail Milne
  - Reference:** Claim AB 01
  - Claim Date/Time:** 11 Oct 2018 2:11:40 AM
  - Currency:** South African Rand
  - Tax Rate:** 0
  - Exchange Rate:** 1
- Table 1: Related References**

RefType	ReferenceType	ReferenceNo
ASMN	Serial No	2020-103056
CALL	Call Reference	CN0000567
CTRT	Contract No	
- Table 2: Item Details**

SourceType	ItemType	ItemCode	ItemDescription	ClaimLineDescription	Quantity	QuantityPerUOP	UnitType	UnitCost	Markup	Discount	UnitSellingPrice	Ware
ASMN	BNVN	SP2020	Sprint Colour Multi Functional Copier	2020-103056 - SP2020 Sprint Colour Multi Functional Copier	1.00	0.00	ea	4 500.00	0.00	0.00	4 500.00	
- Summary Table:**

Qty	1.00	Sub Total	4 500.00
		VAT	675.00
		Grand Total	5 175.00

## VIEW EXPIRED WARRANTIES

- In the **Warranties** listing screen, click on the **drop-down arrow** in the **Status** field.

Warranties - BPO: Version 2.1.0.66 - Example Company

Home | Equipment and Locations | Contract | Finance and HR | Inventory | Maintenance and Projects | Manufacturing | Procurement | Sales | Service | Reporting | Utilities

Active | Refresh

Links: Enter text to search...

Functions: Linked Items, Warranty Claims

WarrantyCode	Description	TypeDesc	WarrantyPeriod	PeriodTypeDesc	MeterUnits	UnitTypeDesc	MetersAggregated	Status
24MSW	24 Month Supplier Warranty	Supplier Warranty	24 Months	Months	10000	Copies made	No	A
12MSW	12 Month Supplier Warranty	Supplier Warranty	12 Months	Months	50000	Copies made	No	A
1YSW	1 Year Supplier Warranty	Supplier Warranty	1 Years	Years	56000	Copies made	Yes	A
3MSW	3 Months Service Warranty	Supplier Warranty	6 Months	Months	50000	Double Sided ...	No	A
wct	warranty code test	Supplier Warranty	500 Months	Months	0		No	A
RET3	Retest	Supplier Warranty	1 Years	Years	10000		Yes	A
TES	Testing	Supplier Warranty	2 Months	Months	5000	Copies made	No	A
TES1	TEST	Supplier Warranty	6 Months	Months	0		No	A
F1YW	Full 1 Yr Warranty - Unit and Parts	Supplier Warranty	1 Years	Years	50000	Copies made	No	A
6MSW	Six Month Supplier Warranty	Supplier Warranty	6 Months	Months	5000	Copies made	No	A

Open Windows | 21 Oct 2018

- Click on **Expired** in the drop-down list.

Warranties - BPO: Version 2.1.0.66 - Example Company

Home | Equipment and Locations | Contract | Finance and HR | Inventory | Maintenance and Projects | Manufacturing | Procurement | Sales | Service | Reporting | Utilities

Active

Status: A Active, E Expired

WarrantyCode	Description	Supplier	WarrantyPeriod	PeriodTypeDesc	MeterUnits	UnitTypeDesc	MetersAggregated	Status
24MSW	24 Month Supplier Warranty	Supplier Warranty	24 Months	Months	10000	Copies made	No	A
12MSW	12 Month Supplier Warranty	Supplier Warranty	12 Months	Months	50000	Copies made	No	A
1YSW	1 Year Supplier Warranty	Supplier Warranty	1 Years	Years	56000	Copies made	Yes	A
3MSW	3 Months Service Warranty	Supplier Warranty	6 Months	Months	50000	Double Sided ...	No	A
wct	warranty code test	Supplier Warranty	500 Months	Months	0		No	A
RET3	Retest	Supplier Warranty	1 Years	Years	10000		Yes	A
TES	Testing	Supplier Warranty	2 Months	Months	5000	Copies made	No	A
TES1	TEST	Supplier Warranty	6 Months	Months	0		No	A
F1YW	Full 1 Yr Warranty - Unit and Parts	Supplier Warranty	1 Years	Years	50000	Copies made	No	A
6MSW	Six Month Supplier Warranty	Supplier Warranty	6 Months	Months	5000	Copies made	No	A

Open Windows | 21 Oct 2018

- If there are any expired warranties, they will be displayed in this screen.

WarrantyCode	Description	TypeDesc	WarrantyPeriod	PeriodTypeDesc	MeterUnits	UnitTypeDesc	MetersAggregated	Status
--------------	-------------	----------	----------------	----------------	------------	--------------	------------------	--------

MNU.069.003