

# INVENTORY

## DEPRECIATION METHODS

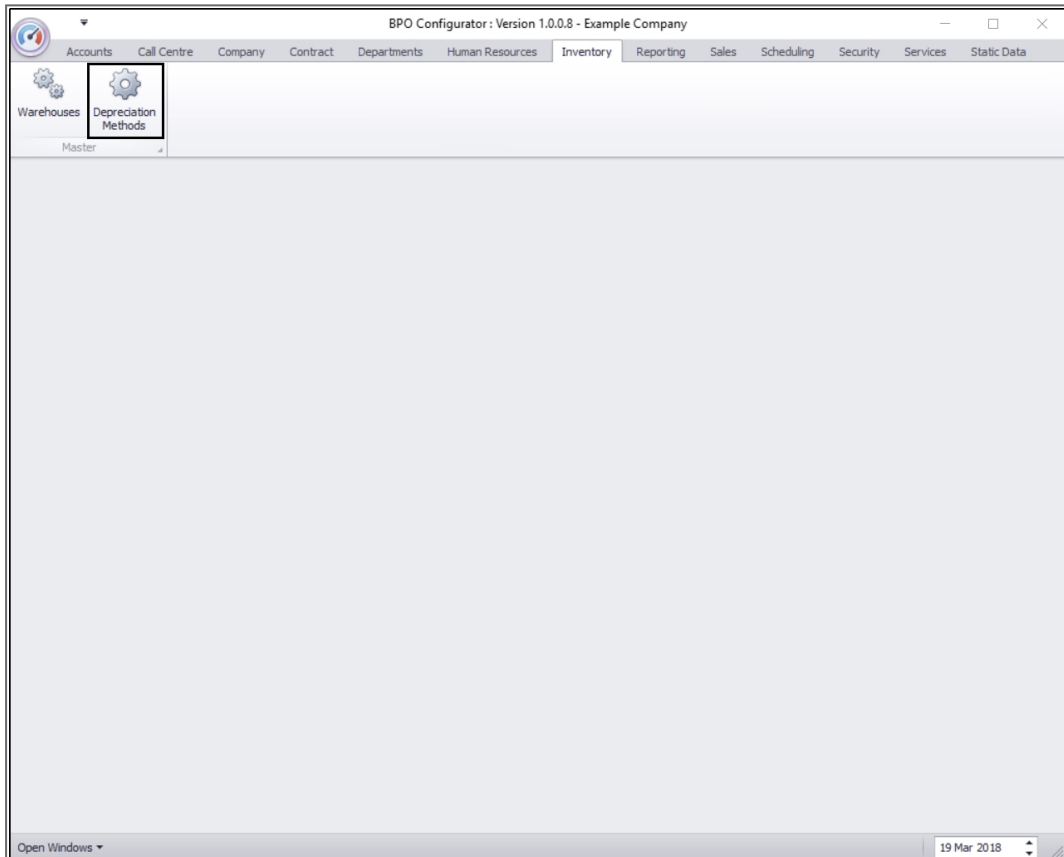
Use this configuration screen to set up a **Depreciation** and/or **Wear & Tear Method**.

Both the **Depreciation** and the **Wear and Tear** methods can be linked to the **inventory definition**.

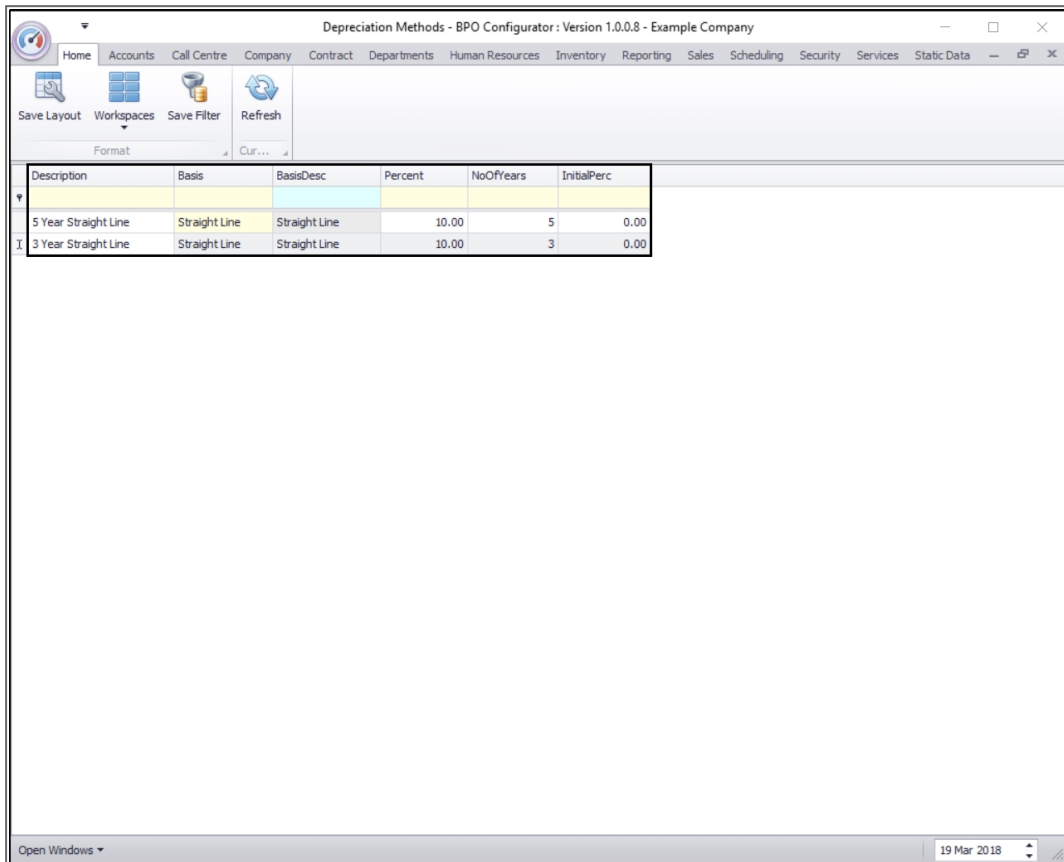
---

**Ribbon Access:** *Configurator > Inventory > Depreciation Methods*

---

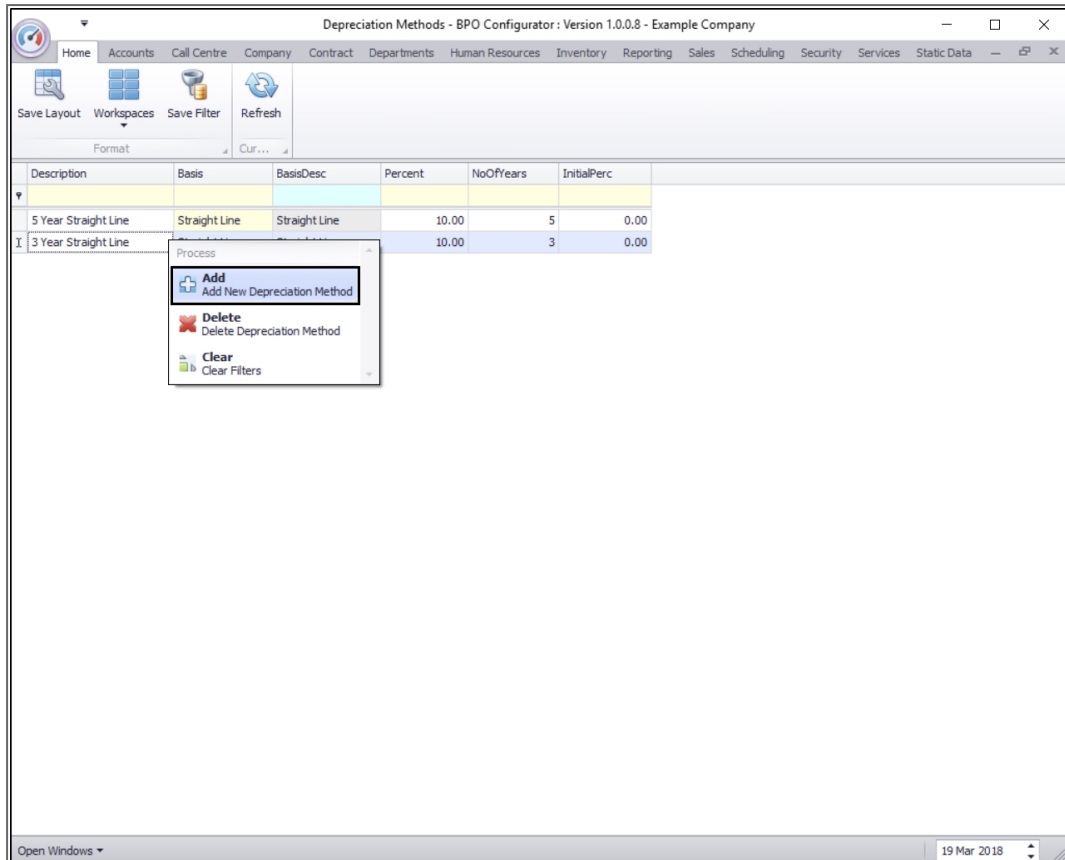


- The **Depreciation Methods** listing screen will be displayed.
  - Here you can view all the depreciation methods currently on the system.



| Description          | Basis         | BasisDesc     | Percent | NoOfYears | InitialPerc |
|----------------------|---------------|---------------|---------|-----------|-------------|
| 5 Year Straight Line | Straight Line | Straight Line | 10.00   | 5         | 0.00        |
| 3 Year Straight Line | Straight Line | Straight Line | 10.00   | 3         | 0.00        |

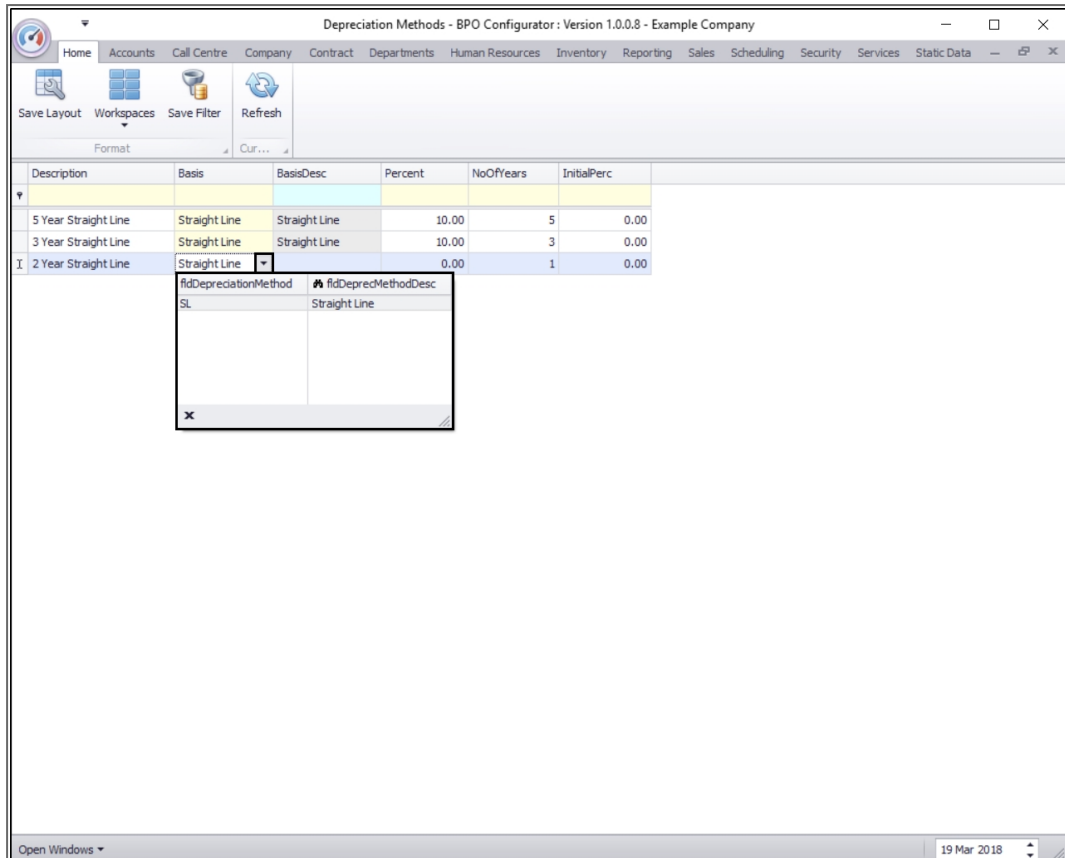
- **Right click** anywhere in any **row** in this screen.
- A **Process** menu will pop up.
- Click on **Add** - Add New Depreciation Method.



- A new row will appear in the data grid.
  - **Description:** Click in this text box and type in a description for the depreciation method.

| Description          | Basis                            | BasisDesc     | Percent | NoOfYears | InitialPerc |
|----------------------|----------------------------------|---------------|---------|-----------|-------------|
| 5 Year Straight Line | Straight Line                    | Straight Line | 10.00   | 5         | 0.00        |
| 3 Year Straight Line | Straight Line                    | Straight Line | 10.00   | 3         | 0.00        |
|                      | <input type="text" value="..."/> |               |         |           |             |

- **Basis:** Click in this text box to reveal a drop-down arrow. Click on this arrow and select a depreciation method from the menu. e.g. Straight Line



- **Basis Desc:** This will now populate with the corresponding description according to the Basis selected in the previous step.
- **Values:** Use the Percentage and Initial Percentage columns if you want to specify the percentage to be depreciated
- **No. of Years:** Type in the number of years over which the depreciation / wear & tear will take place.
- Click on **Save**.

Depreciation Methods - BPO Configurator : Version 1.0.0.8 - Example Company

Home Accounts Call Centre Company Contract Departments Human Resources Inventory Reporting Sales Scheduling Security Services Static Data

Save Layout Workspaces Save Filter Refresh

Format Cur...

| Description            | Basis         | BasisDesc     | Percent | NoOfYears | InitialPerc |
|------------------------|---------------|---------------|---------|-----------|-------------|
| 5 Year Straight Line   | Straight Line | Straight Line | 10.00   | 5         | 0.00        |
| 3 Year Straight Line   | Straight Line | Straight Line | 10.00   | 3         | 0.00        |
| I 2 Year Straight Line | Straight Line | Straight Line | 0.      | 0         | 0.00        |

Open Windows 19 Mar 2018

MNU.097.001