

CONTRACT

ADD ITEM INCLUSIONS

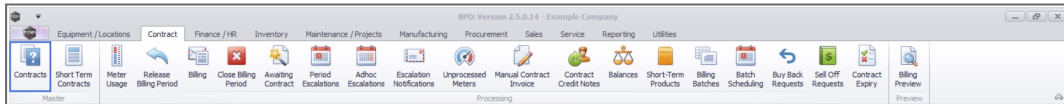
Item Inclusions are items which are included on a contract and should not be billed separately. These items are selected first by category and then by the item within that category.

Examples of Item Inclusion **Category Types** are:

- **Part Inclusion**e.g., toner
- **BOM Inclusion**e.g., machine service BOM
- **Craft Inclusion**e.g., technician
- **Service Inclusion**e.g., call out fee

More than one item inclusion can be added from **each** category type.

Ribbon Select **Contract > Contracts**



The **Contract Listing** screen will be displayed.

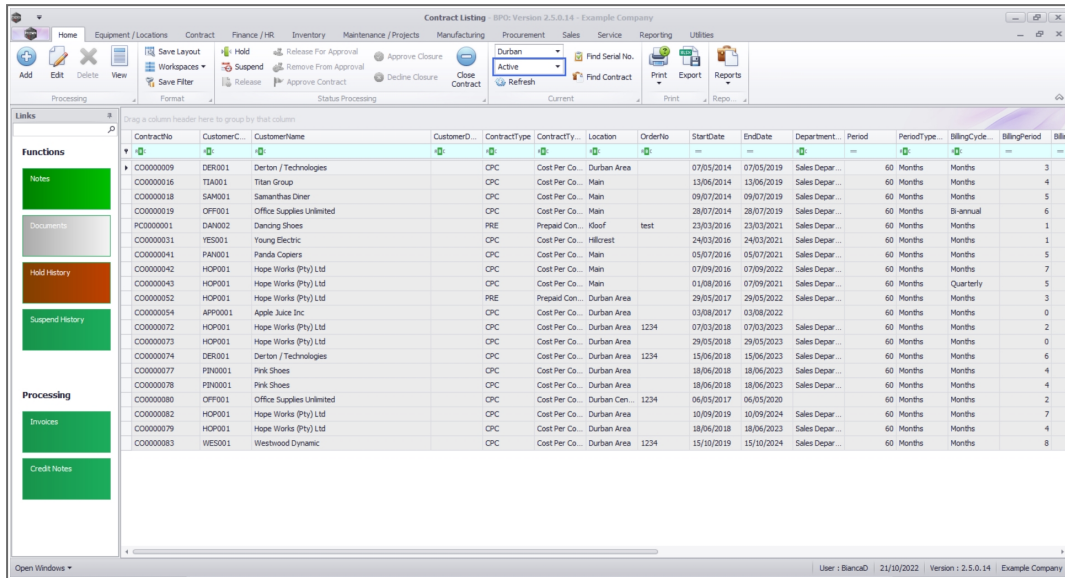
Select the Site

Your employee user record should be linked to a default site. In this case, the site will auto populate with this default, otherwise the site must be manually selected.

Another site can be selected, if required, and if you have the security rights to access the site.

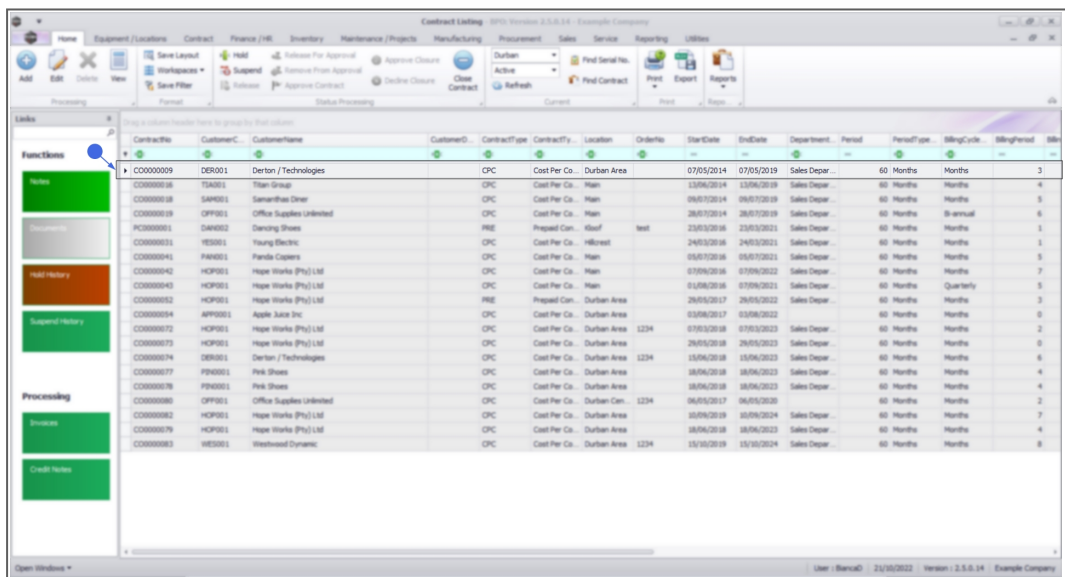
If **All Sites** displays here, then you do not have a default site configured on your user record, and need to select the required site.

Upon opening, this screen will default to the **Active** status, listing all the **Active** contracts for the selected site.



SELECT THE CONTRACT

- Select the **row** of the **contract** that you wish to process.



- Click on the **Edit** button.

▮

The **Contract Maintenance** screen will be displayed.

▮

SELECT THE ITEM

- Click on the row of the contract item you wish to work with.

▮

Item Inclusions Frame

- Click on the **Item Inclusions** tab.

The **Item Inclusions** frame will be expanded.

- In the **Item Inclusions** frame, you can add all **Contract Inclusions** (items which are included in the contract and not billed separately).
- These are tasks, items, actions, services, etc. that are specifically “included” in the contract and are covered by a set contract fee agreed between the customer and service provider.
- Although they are included, you can have a breakdown of each individual inclusion. This breakdown is achieved by utilising the **Link Fee** panel within the Item Inclusion panel. For more information, refer to the **Link Fee** topic.

▮

Add Item Inclusions

- **Right click** anywhere in a **row** of the **Item Inclusions** frame.
- A **Process** menu will pop up with the following options:
 - **Part:**[Add Part Inclusion](#)
 - **BOM:**[Add Bill Of Materials Inclusion](#)
 - **Craft:**[Add Craft Inclusion](#)
 - **Service:**[Add Service Inclusion](#)
 - **Link Fee:**[Link A Fee To An Inclusion](#)
 - **Delete:**[Delete Inclusion](#)

▮

Add Part Inclusion

- Click on **Part** - Add Part Inclusion.

▮

- An **Input Validation** message box will pop up asking:
 - **Are you sure you want to add a part inclusion to this item - [Serial Number or Location Description]?**
- Click on **Yes**.

▮

- A **Select a part** screen will pop up.
- Click on the **row selector** in front of the **part** you wish to **add** to this contract as an **inclusion**
- Click on **Ok**.

▮

- The selected part will be **added** to the **Item Inclusion** frame.

- **Code:** This field will auto populate with the code of the selected item.
- **Description:** This field will auto populate with the description of the selected item.
- **SLA Type:** This field will auto populate with the SLA type of the selected item.
- **Quantity:** Type in the quantity included for the selected part.
- **Fee Type:** This field will only be populated if you [link a fee](#) to the inclusion.



Add Bill of Materials Inclusion

- **Right click** anywhere in a **row** of the **Item Inclusions** frame.
- The **Process** menu will pop up.
- Click on **BOM** - Add BOM Inclusion.



- An **Input Validation** message box will pop up asking:
 - **Are you sure you want to add a BOM inclusion to this item - [Serial Number or Location Description]??**
- Click on **Yes**.



- A **Select a bill of material** screen will pop up.
- Click on the **row selector** in front of the **BOM** you wish to **add** to this contract as an **inclusion**.
- Click on **Ok**.



- The selected **BOM** will be added to the **Item Inclusions** frame.
- **Code:** This field will auto populate with the code of the selected item.
- **Description:** This field will auto populate with the description of the selected item.
- **SLA Type:** This field will auto populate with the SLA type of the selected item.
- **Quantity:** Type in the quantity included for the selected BOM.
- **Fee Type:** This field will only be populated if you **link a fee** to the inclusion.



Add Craft Inclusion

- **Right click** anywhere in a row of the Item Inclusions frame.
- The **Process** menu will pop up.
- Click on **Craft** - Add Craft Inclusion.



- An **Input Validation** message box will pop up asking:
 - **Are you sure you want to add a Craft inclusion to this item - [Serial Number or Location Description]?**
- Click on **Yes**.



- A **Select a craft** screen will pop up.
- Click on the **row selector** in front of the **craft** you wish to **add** to this contract as an **inclusion**.
- Click on **Ok**.



- The selected **Craft** will be added to the **Item Inclusions** frame.
 - **Code:** This field will auto populate with the code of the selected item.
 - **Description:** This field will auto populate with the description of the selected item.
 - **SLA Type:** This field will auto populate with the SLA type of the selected item.
 - **Quantity:** Type in the number of hours included for the selected Craft.
 - **Fee Type:** This field will only be populated if you **link a fee** to the inclusion.

▮

Add Service Inclusion

- **Right click** anywhere in a **row** of the **Item Inclusions** frame.
- The **Process** menu will pop up.
- Click on **Service** - Add Service Inclusion.

▮

- An **Input Validation** message box will pop up asking:
 - **Are you sure you want to add a Service inclusion to this item - [Serial Number or Location Description]?**
- Click on **Yes**.

▮

- A **Select a service** screen will pop up.
- Click on the **row selector** in front of the **service** you wish to **add** to this contract as an **inclusion**.
- Click on **Ok**.



- The selected **Service** will be added to the **Item Inclusions** frame.
 - **Code:** This field will auto populate with the code of the selected item.
 - **Description:** This field will auto populate with the description of the selected item.
 - **SLA Type:** This field will auto populate with the SLA type of the selected item.
 - **Quantity:** Type in the quantity included for the selected Service.
 - **Fee Type:** This field will only be populated if you **link a fee** to the inclusion.



- **Note:** You can add more than one of each type of item inclusion to the contract.

Link a Fee to an Inclusion

- **Right click** in the **row** of the **item inclusion** that you wish to **link a fee** to.
 - In this image **IT Technician** has been selected.
- The **Process** menu will pop up.
- Click on **Link Fee** - Link Fee to this Inclusion.



- A **The Fee Lookup List** screen will pop up.
- Click on the **row selector** in front of the **fee** you wish to **add** to this **inclusion**.
- Click on **Ok**.

- **Note:** Only the fees that you selected in the **Item Fees Frame** will be displayed in this screen, and the fee can only be linked to one inclusion.



- The **The Fee Type** field will be populated with the selected fee type.
 - In this image, **S** - Service was selected, since the selected inclusion is covered by the Service Fee, in this example.



View the linked Inclusion on the Fee Detail

Note: that for this step you will need to save the contract first and then come back to view the Fee's linked Inclusion.

- Click on the **Item Fees** frame.
- Click on the **Expand** button on the fee you linked to an inclusion.
- The **Fee Inclusions** frame will be displayed.
- You can now view the details of the inclusion.
- You can change the **Quantity** of the inclusion in this frame if required.



Delete Inclusion

- Another option in the **Item Inclusions Process** menu is **Delete Inclusion**.

- **Right click** in the **row** of the **item inclusion** that you wish to **delete** from the contract.
 - In this image **INST** - Installation Fee has been selected.
- The **Process** menu will pop up.
- Click on **Delete** - Delete Inclusion.

▮

- An **Input Validation** message box will pop up asking:
 - **Are you sure you want to delete this item inclusion - [Serial Number or Location Description]?**
- Click on **Yes**.

▮

- The selected item will now be **removed** from the **Item Inclusions** frame.

▮

SAVE ITEM INCLUSIONS

SAVE THE CONTRACT

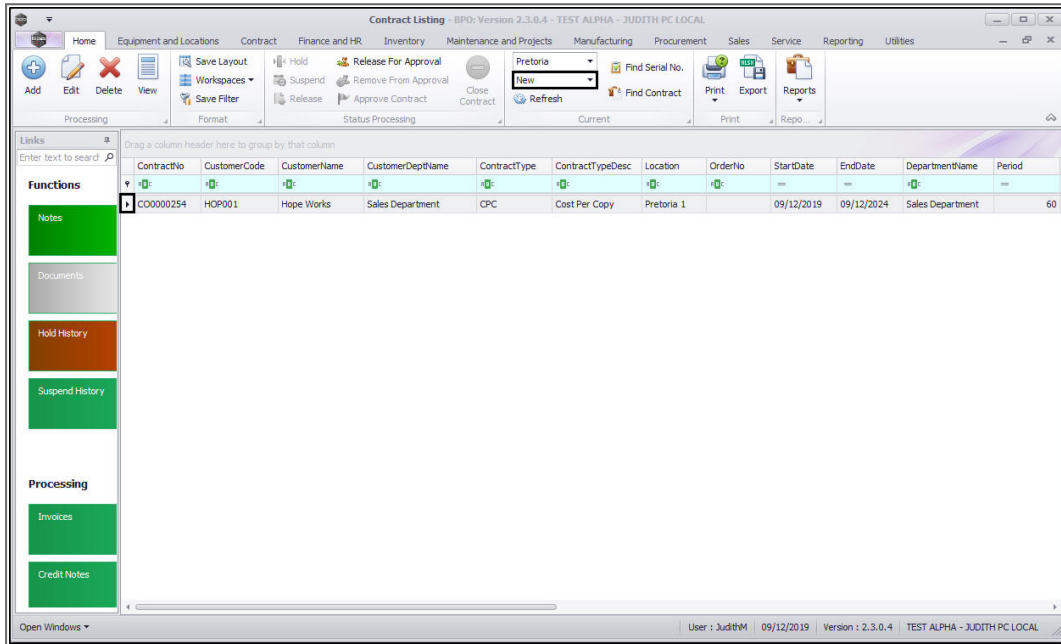
- When you are done, click on **Save**.

▮

- The contract will be **saved** and you will return to the **Contract Listing** screen where the status defaults to **Active**, or will be set to the Status you last selected.
- Click on the **drop-down arrow** in the **Status** field and select the relevant status.

▮

- **New** contracts can be found within the **New** contract status listing screen.
- From here, the contract will need to be **Released** and then **Approved** before it becomes active.
- **Edited** contracts may either remain in **Active** status or move to **Released** status in order for changes to be reviewed before **Approval** depending on the change made.



MNU.112.027

