

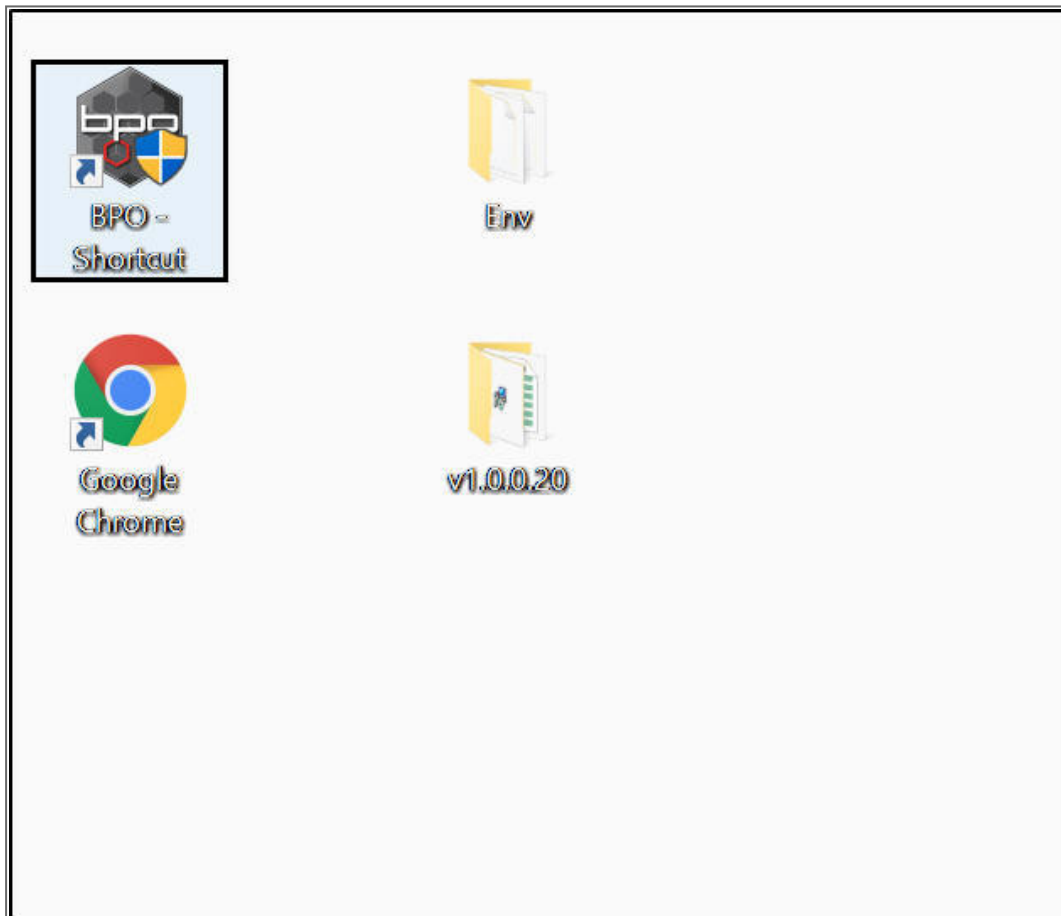
# INSTALLATION AND CONFIGURATION

## BPO2 ENVIRONMENT CONFIGURATION

When **BPO** is first installed, you will need to update the connection settings with your specific **SQL** server and database names. Contact the **CO3 Technologies Support Centre** ( [softwaredocs@co3.co.za](mailto:softwaredocs@co3.co.za) ) for these details.

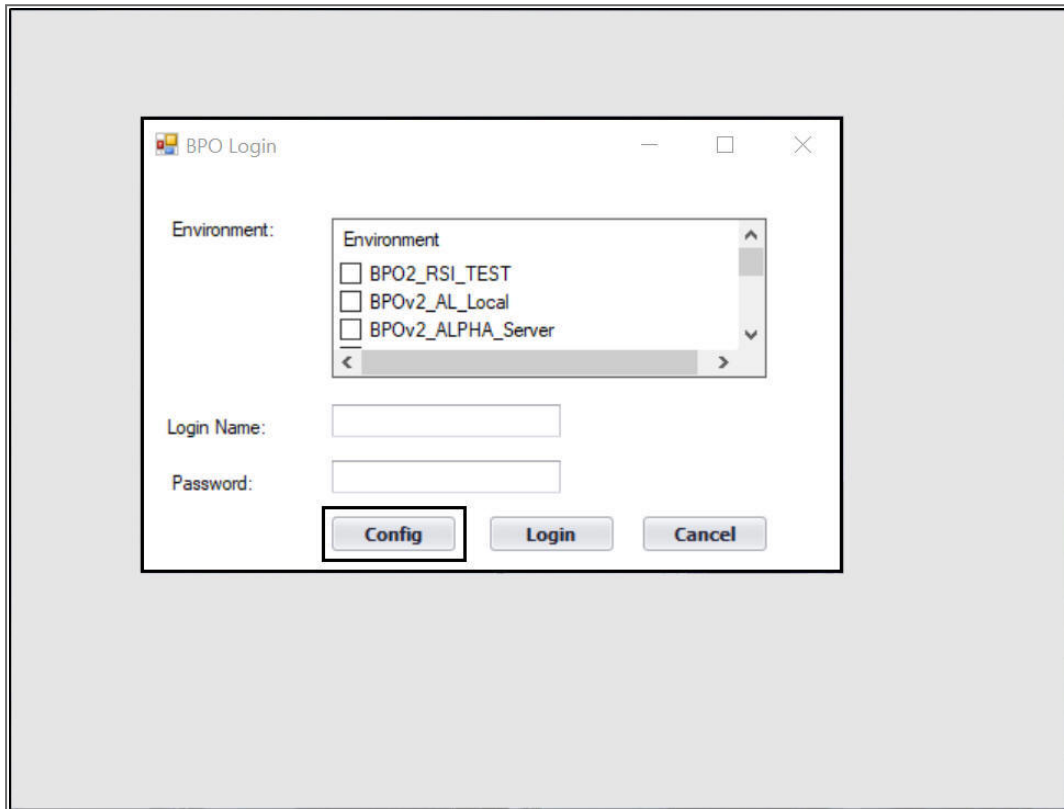
### CONNECT BPO TO THE DATABASE

- Double click on the **BPO icon** on your computer.



## BPO CONFIG

- The **BPO Login** screen will be displayed, if there are other environments already configured, these will also be displayed in this screen.
- Click on **Config**.

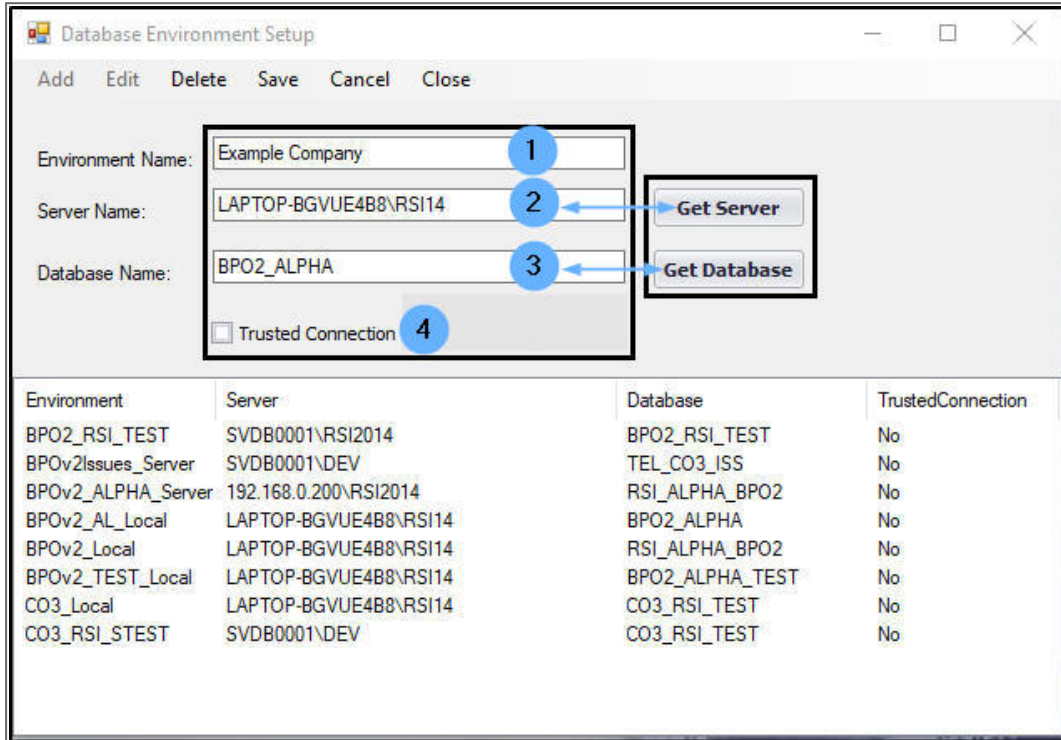


## ENVIRONMENT SETUP DETAILS

The **Database Environment Setup** screen will be displayed.

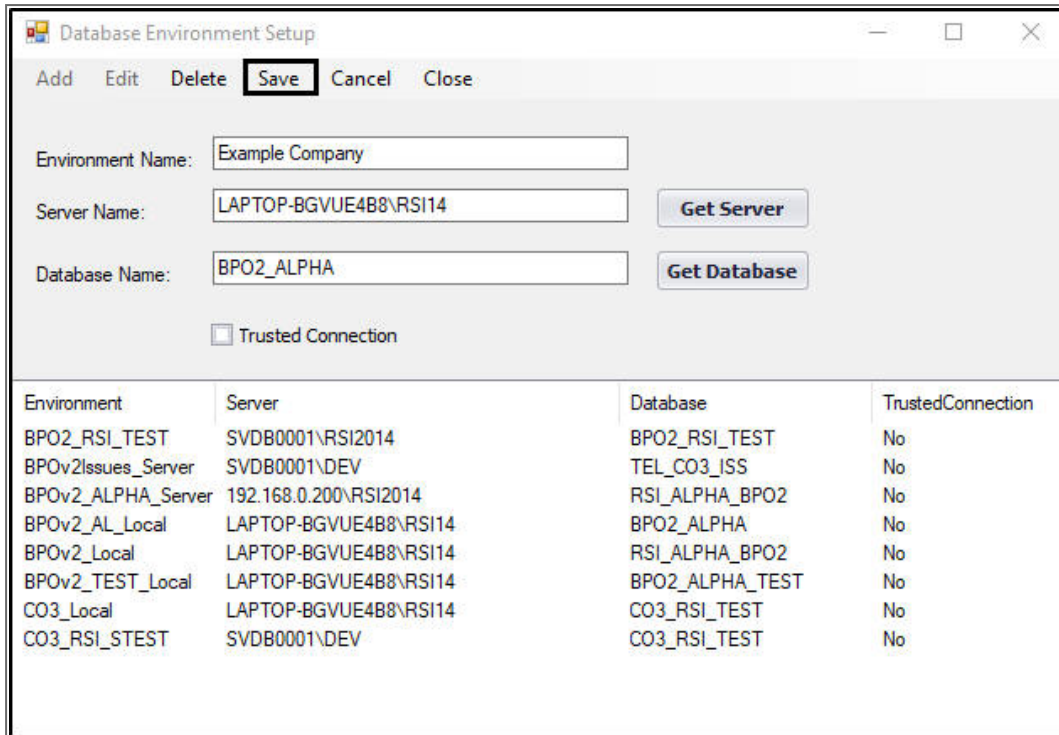
1. Type in the correct **Environment Name**.
2. Type in the correct **Server Name** or click on **Get Server** and select the correct server.

3. Type in the correct **Database Name** or click on **Get Database** and select the correct database.
4. **Trusted connection** checkbox: Either tick or leave it un-ticked, as required.



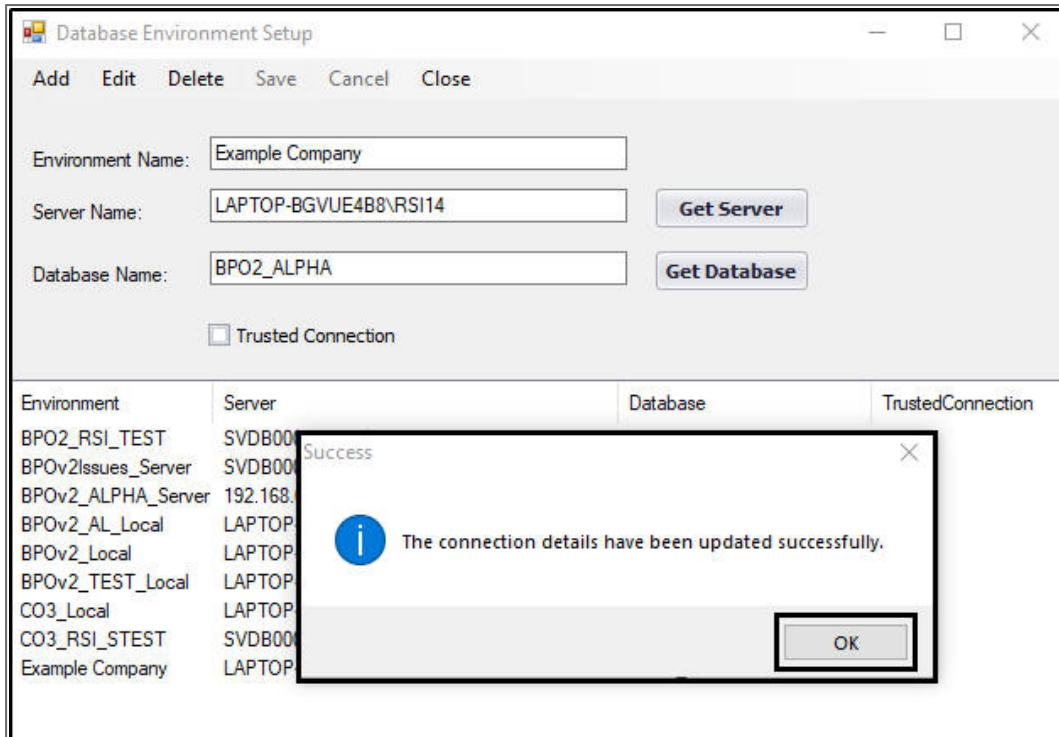
## SAVE DETAILS

- Click on **Save**.



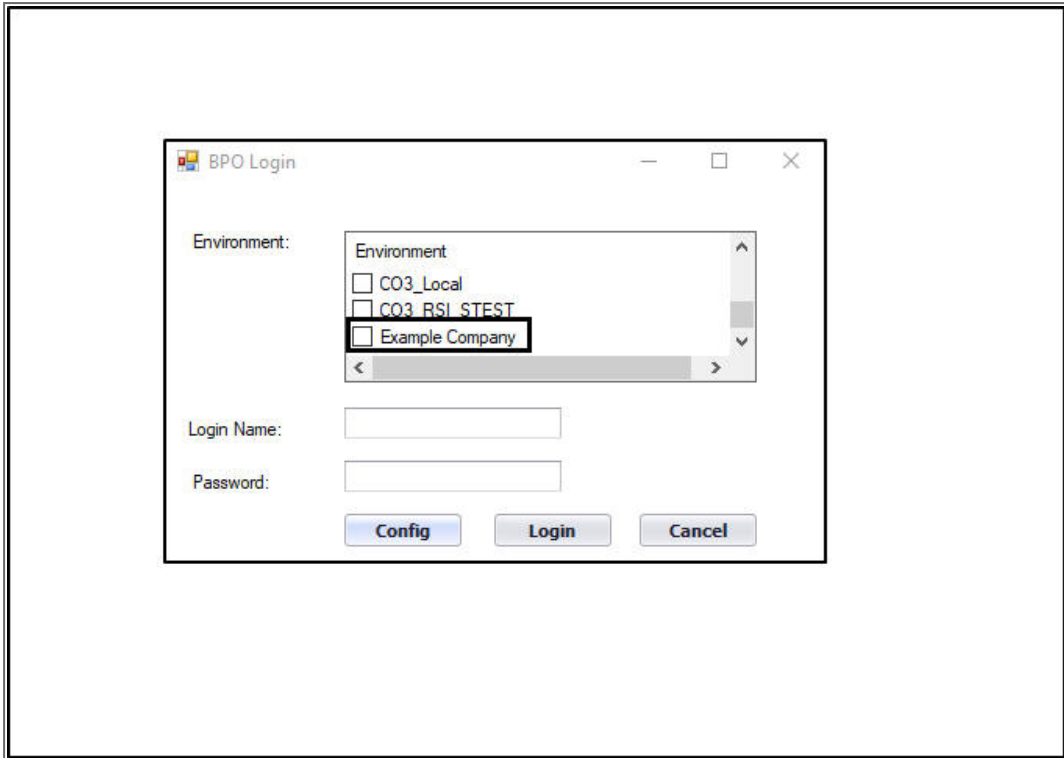
Environment	Server	Database	TrustedConnection
BPO2_RSI_TEST	SVDB0001\RSI2014	BPO2_RSI_TEST	No
BPOv2Issues_Server	SVDB0001\DEV	TEL_CO3_ISS	No
BPOv2_ALPHA_Server	192.168.0.200\RSI2014	RSI_ALPHA_BPO2	No
BPOv2_AL_Local	LAPTOP-BGVUE4B8\RSI14	BPO2_ALPHA	No
BPOv2_Local	LAPTOP-BGVUE4B8\RSI14	RSI_ALPHA_BPO2	No
BPOv2_TEST_Local	LAPTOP-BGVUE4B8\RSI14	BPO2_ALPHA_TEST	No
CO3_Local	LAPTOP-BGVUE4B8\RSI14	CO3_RSI_TEST	No
CO3_RSI_STEST	SVDB0001\DEV	CO3_RSI_TEST	No

- A **Success** message box will pop up informing you that;
  - ***The connection details have been updated successfully.***
- Click on **Ok**.



## VIEW NEW ENVIRONMENT

- The *Database Environment Setup* screen will close.
- The new environment added will be displayed in the *BPO Login* screen.
- In this image, *Example Company* has been added.



MNU.146.018