

We are currently updating our site; thank you for your patience.

INSTALLATION AND CONFIGURATION

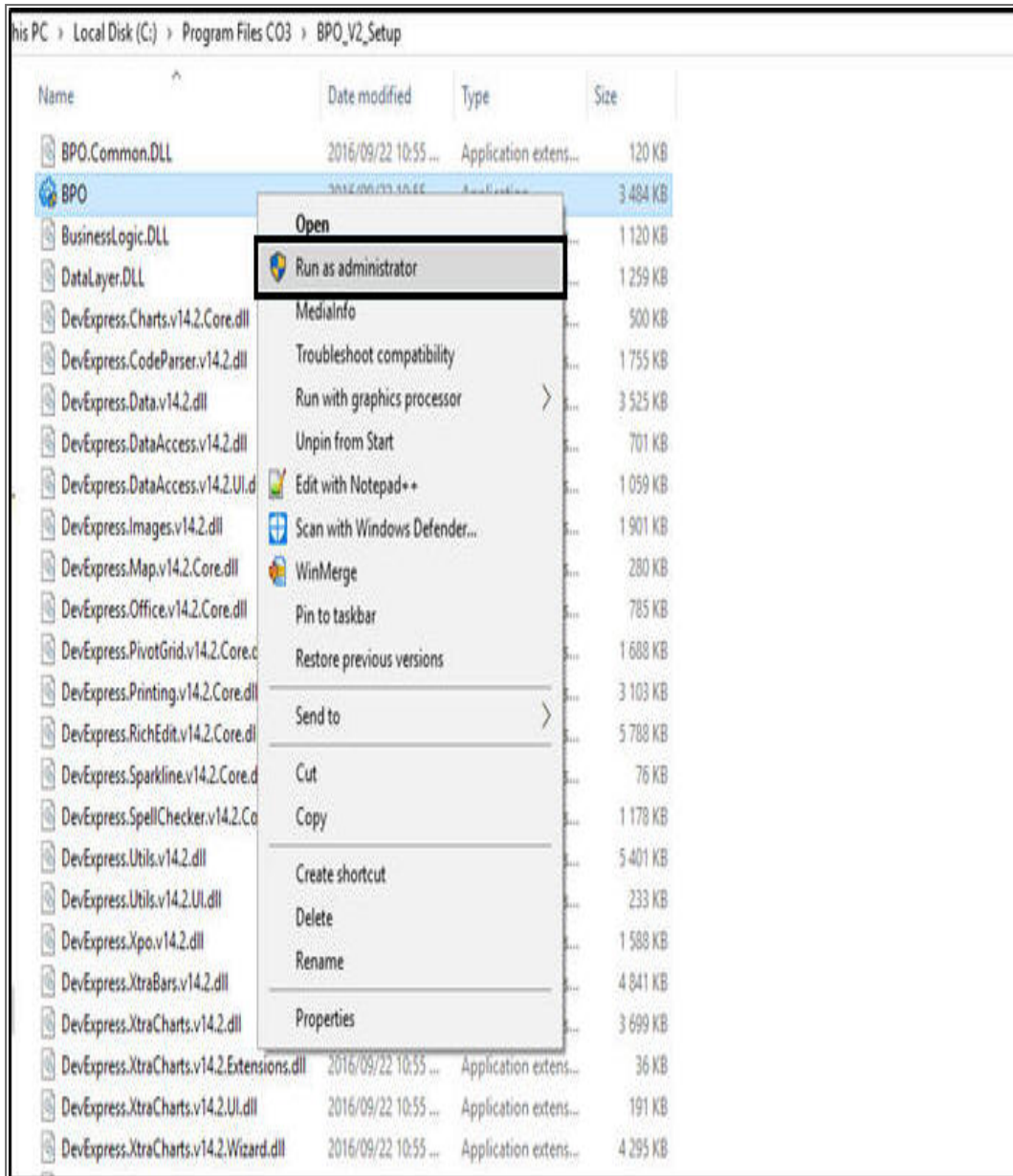
NUCLEUS SERVICE – ENVIRONMENT CONFIGURATION

After installation and before initial login, an environment needs to be configured that will connect **Nucleus Service** with the database.

If your company uses multiple databases for multiple companies (and you need to access all companies) then each one of those databases need to be linked as an environment.

You will need to get the **SQL Server Instance** and **Database** details from your company's System Administrator who manages **Nucleus Service**.

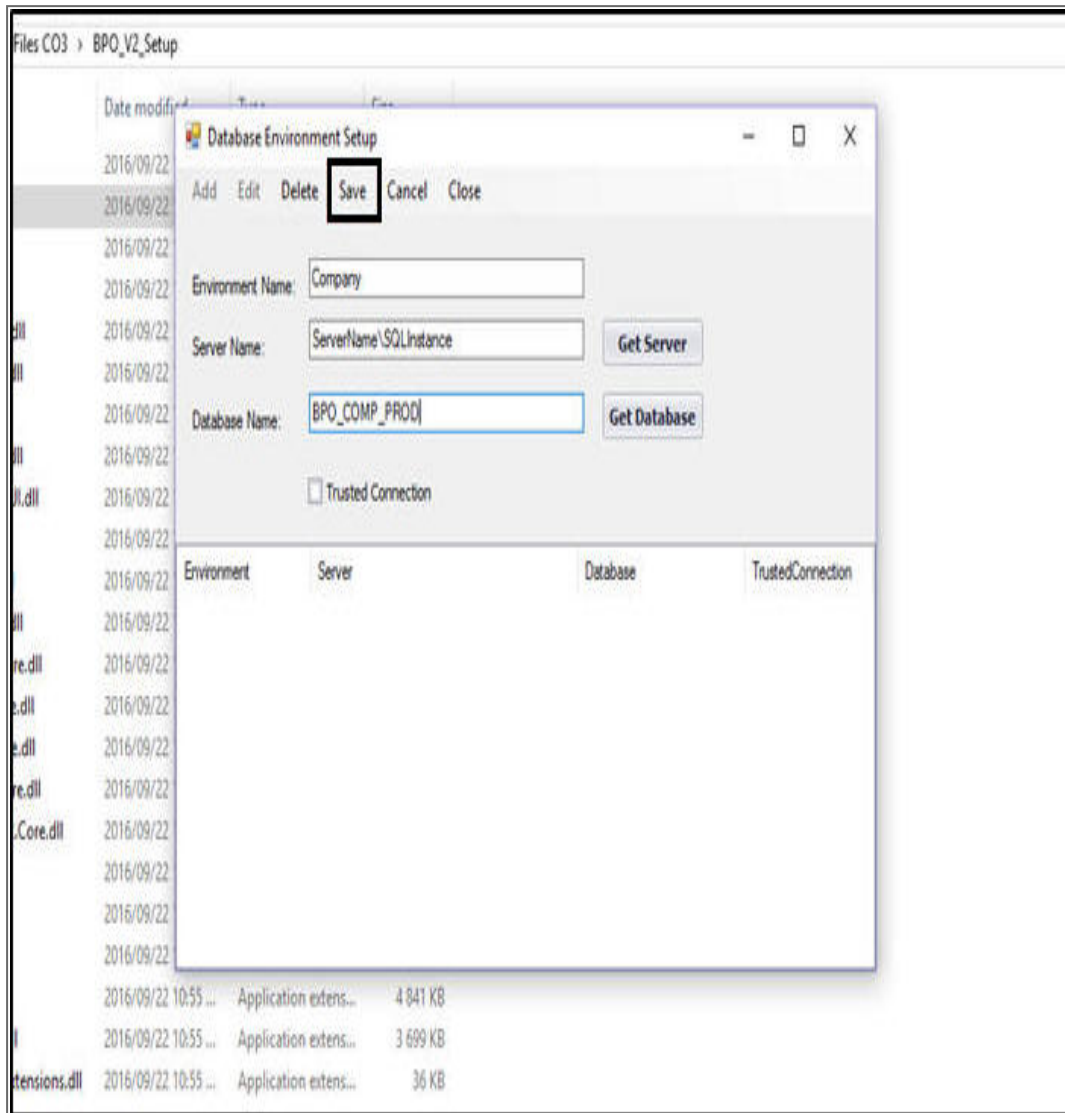
- Go to the install location for **Nucleus Service** (by default, the product will be installed in the following location: **C:\Program Files\CO3 Technologies (Pty) LTD\BPO_V2_Setup**).
- **Right click** on the **Nucleus Service** application exe and select **Run as Administrator** (this is because the environment details will be written to your computer's registry).
- Proceed with the necessary **User Accounts Control** security check and **Administrator Username** and **Password**, if required. (You may have to ask your System Administrator / IT professional to do this for you).



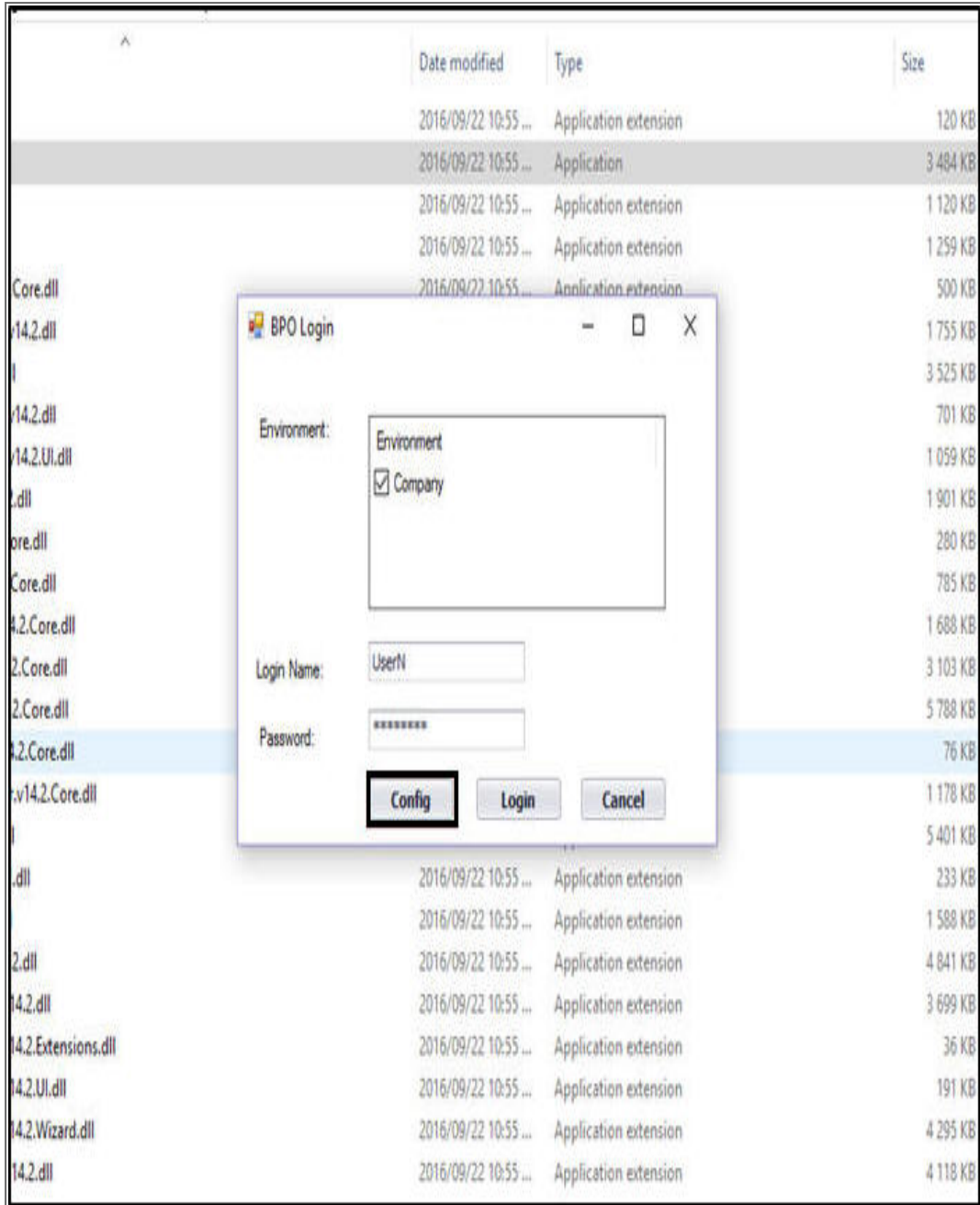
- **Environment Name** : Type in your company name (this is just used for you to identify which database you will be logging on to).
- **Server Name** : Type in or search for the Server Name. This must be the full **SQL Server Instance** designation, and must be correct - or login will fail.
- **Database Name** : Type in or search for the Database. This must

be correct - or login will fail.

- Click on **Save** to confirm.



- The **Nucleus Service Login** screen will appear, displaying the environment you just added.
- If you need to make a correction to a current environment, or add another environment - click on the **Config** button, and follow the same instructions as described above.



BPO2.000.001