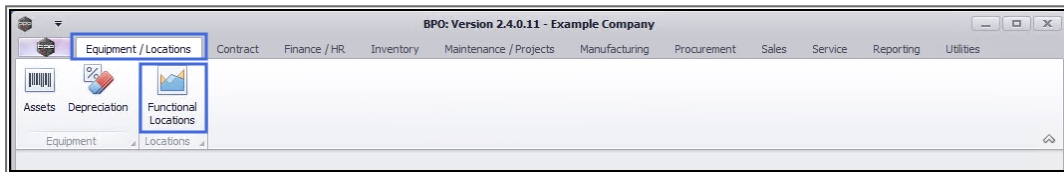


We are currently updating our site; thank you for your patience.

LOCATIONS

FUNCTIONAL LOCATIONS – WARRANTY

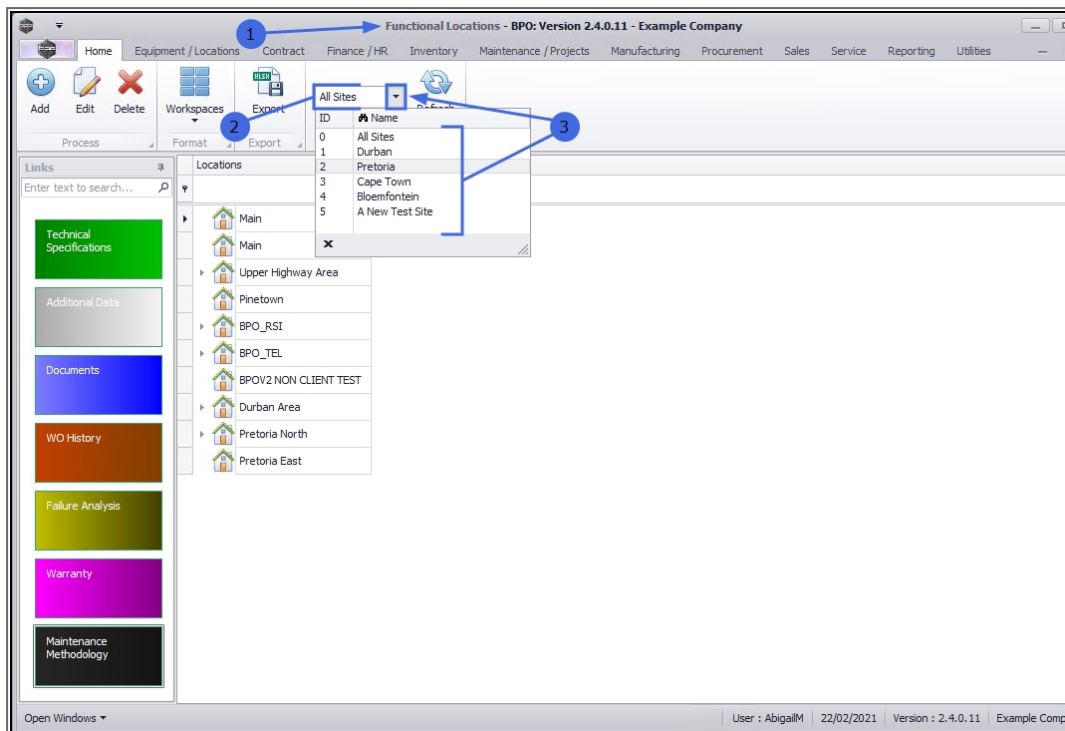
Ribbon Access: Equipment / Locations > Functional Locations



1. The **Functional Locations** screen will be displayed.

SELECT THE SITE

2. This screen will open by default with the Sites filter set to **All Sites**.
3. You do not need to select a specific site, however if you wish to narrow your filter parameters, you can click on the drop-down **arrow** and select a particular site from the list.



SELECT THE LOCATION

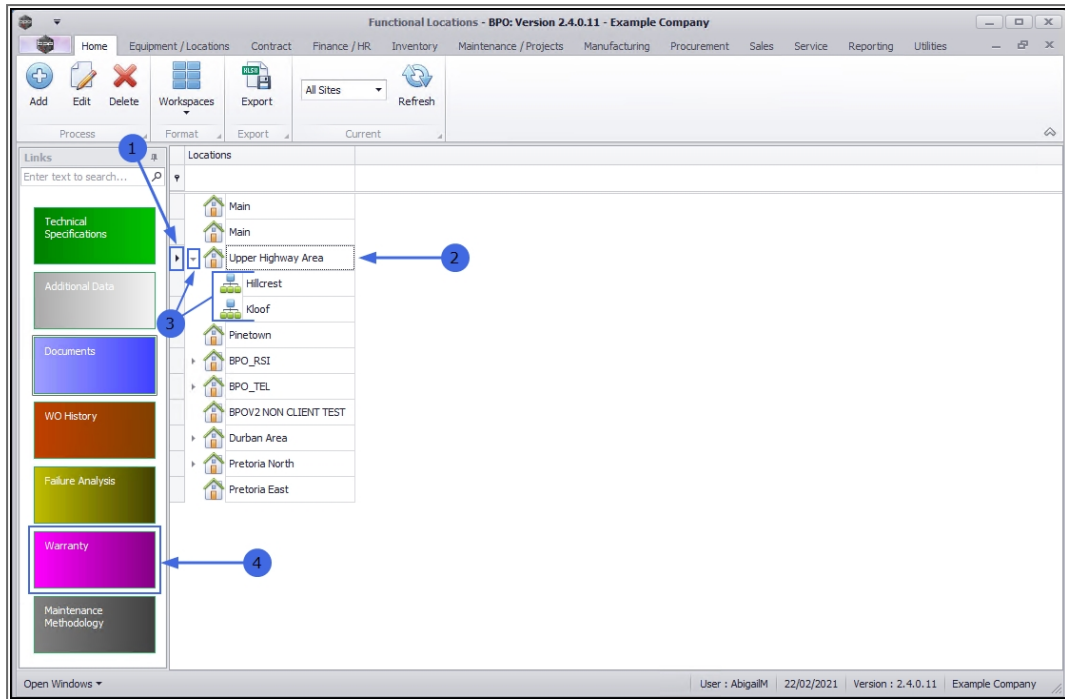
1. Select the **row** of the **location** where you wish to view the Warranty.

MAIN LOCATION

2. If you wish to view the Warranty of a main location, select the **row** of that main location. In this example **Upper Highway Area** is a main location.

SUB-LOCATION

3. If you wish to view the Warranty for a sub-location, ensure that you **expand** the main (parent) location to be able to view and select the row of that sub-location. In this example, **Hillcrest** and **Kloof** are sub-locations of Upper Highway Area.
4. When you have selected the right location, click on the **Warranty** tile.



1. The **Warranty for location: []** screen will open.

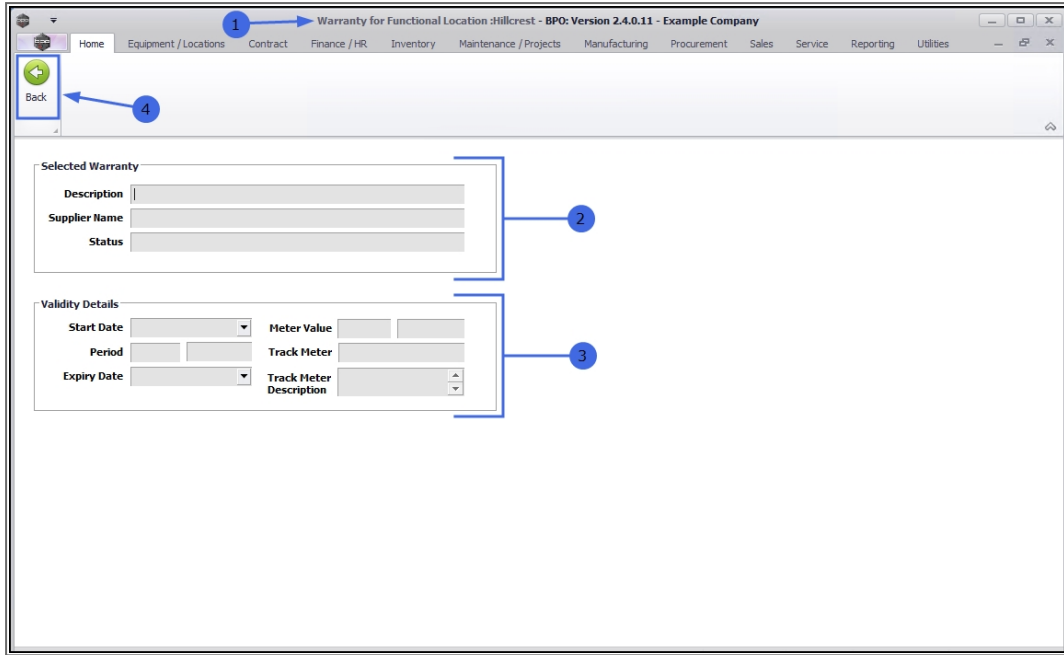
If there is a warranty currently linked to the selected location, you will be able to view the details here.

- Note that this is a view only screen, the information cannot be edited from here.

2. **Selected Warranty:**

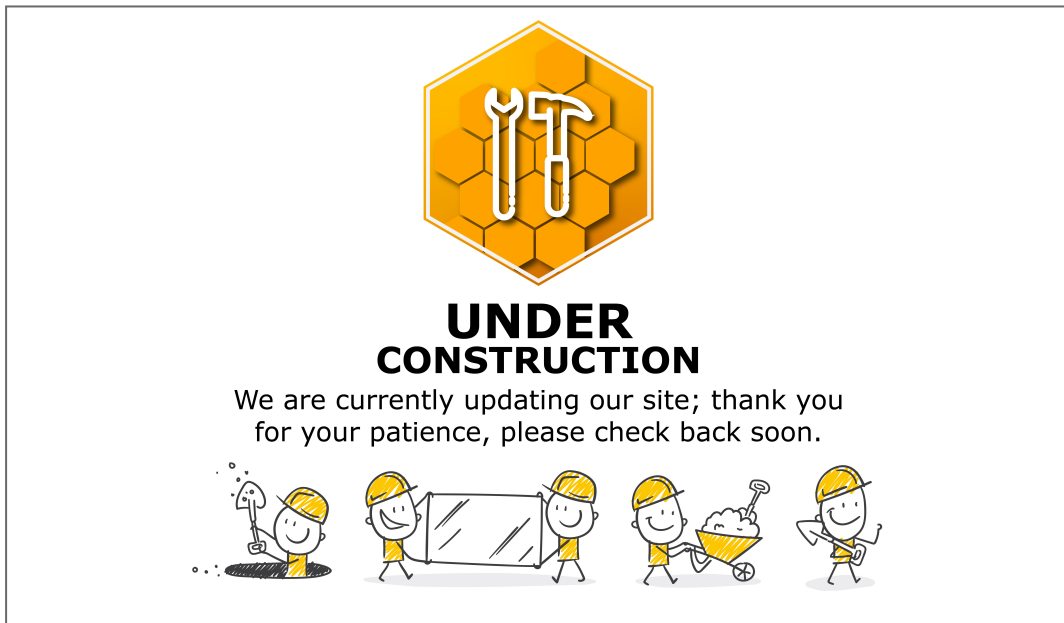
3. **Validity Details:**

4. Click on **Back** to return to the **Functional Locations** listing screen.



...

This topic is currently being updated. Thank you for your patience, please check back soon.



Related Topics

- [Introduction to Functional Locations](#)
- [Add a New Functional Location](#)
- [Edit a Functional Location](#)
- [Delete a Functional Location](#)
- [Location - Technical Specifications](#)
- [Location - Additional Data](#)
- [Location - Documents](#)
- [Location - Work Order History](#)
- [Location - Failure Analysis](#)
- [Location - Maintenance Methodology](#)
- [Location - Add a New Location Contract](#)

MNU.001.008

