

We are currently updating our site; thank you for your patience.

## UTILITIES

### TILE, CASCADE, HORIZONTAL VIEW

When you have multiple screens open in Nucleus Service, to make it easier to view all the screens you are working in, you can use the **multiple view** option.

You can choose to view your open screens in either:

- **Tile View**
- **Cascade View**
- **Horizontal View**

Any grey screens will be **inactive**.

Any **active** screens in each view can be worked in as if they were fully open screens.

Each of the **active** screens can be **expanded** by clicking on the edge of the screen to reveal the double ended expansion arrow, then dragging this arrow to **expand** the screen to the size of your choice.

You can also click on the **maximise** icon in the top right hand of the screen you are working in to enlarge the screen.

When you **maximise** the screen, it removes the secondary ribbon toolbar and pushes it into the **Home Tab** at the top.

**Click and drag** on the screen of your choice to move it around your display screen.

---

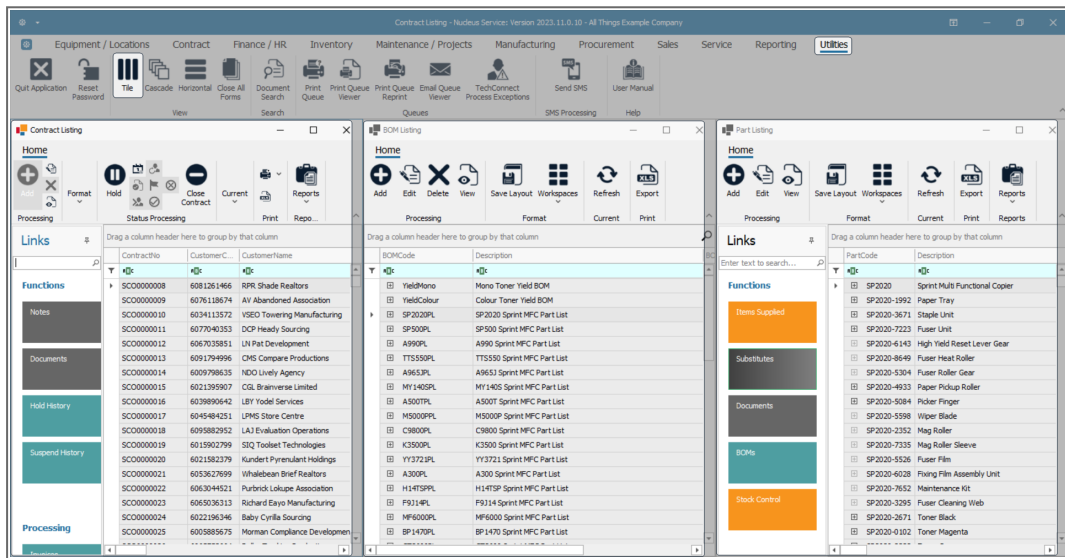
**Ribbon Select:** > Utilities > Tile / Cascade / Horizontal

---

- In any screen you are working in, click on the **Utilities** tab.

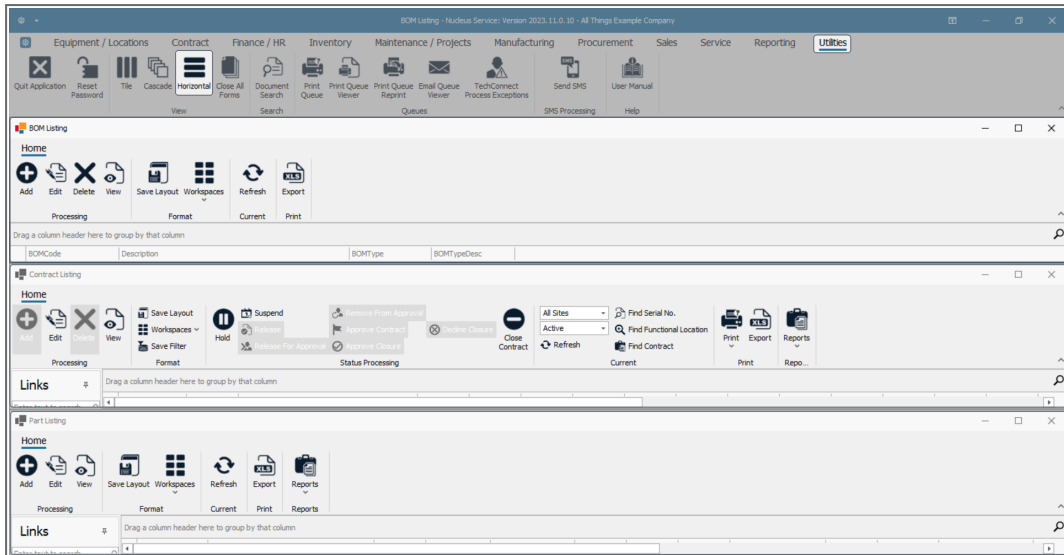
## TILE VIEW

- In the action button toolbar, select **Tile**.
- Your screen will now be divided into as many tiles as the screens that you have open.
- In this image, there are 3 open screens and now 3 tiles are displayed.



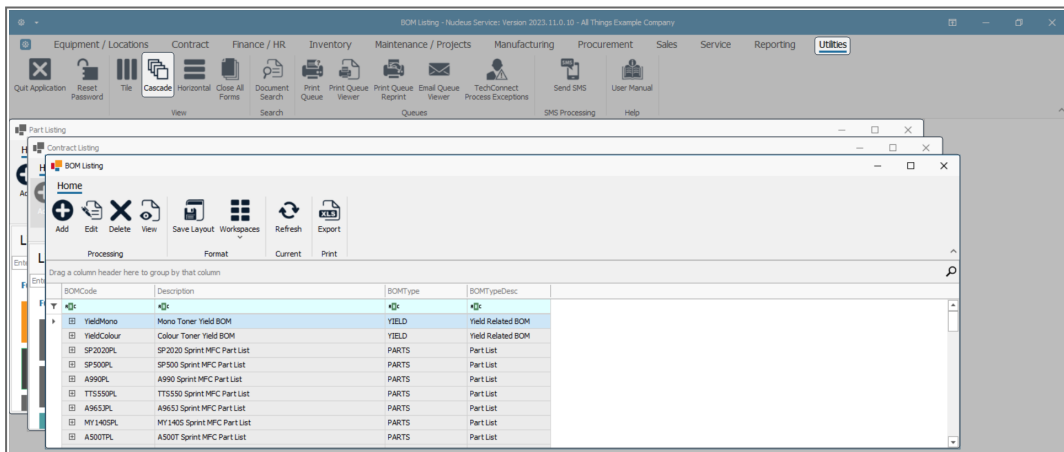
## CASCADE VIEW

- To change to a cascade view, click on **Cascade** in the action button toolbar.
- In this image, the 3 open screens are now ordered in a **Cascade** view.
- Click anywhere on the screen in which you wish to work, to bring it to the fore.



## HORIZONTAL VIEW

- To change to a horizontal view, click on **Horizontal** in the action button toolbar.
- In this image, the 3 open screens are now ordered **Horizontally**.
- Click anywhere in the screen in which you wish to work, to bring it to the fore.



MNU.003.003

