

We are currently updating our site; thank you for your patience.

EQUIPMENT

ASSETS - BOM

A BOM is intrinsic when building a product and when ordering replacement parts. Refer to [Introduction to BOM's](#) for a more detailed explanation.

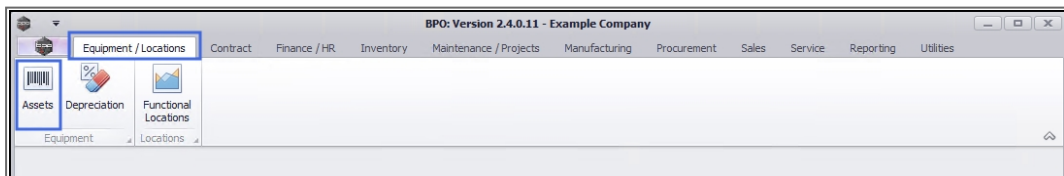
In the case of Assets, a Bill of Materials can be:

- i. a detailed list of items, and their quantities required to make up an end item product (asset).
- ii. a list of items and their quantities used to perform maintenance activities on such a product (asset).

When an asset is requested in the Call screen, the linked BOM will enable the system to list the parts specific to this product.

You can [Add](#), [Delete](#) and [View](#) a Bill of Materials linked to a particular asset directly from the **BOM** tile in the Asset listing (**Machine List for []**) screen.

Ribbon Access: Equipment/Locations > Assets



1. The **Machine List for []** screen will display

SELECT THE SITE AND STATUS

2. This screen will open by default with the **Site** filter set to **All Sites** and the **Status** filter set to **All**.

- **Note:** You do not need to select a specific **Site** or **Status**, however, if you wish to narrow your asset filter parameters, you can click on the drop-down **arrows** and select a particular Site and Status from the list.

SELECT ASSET

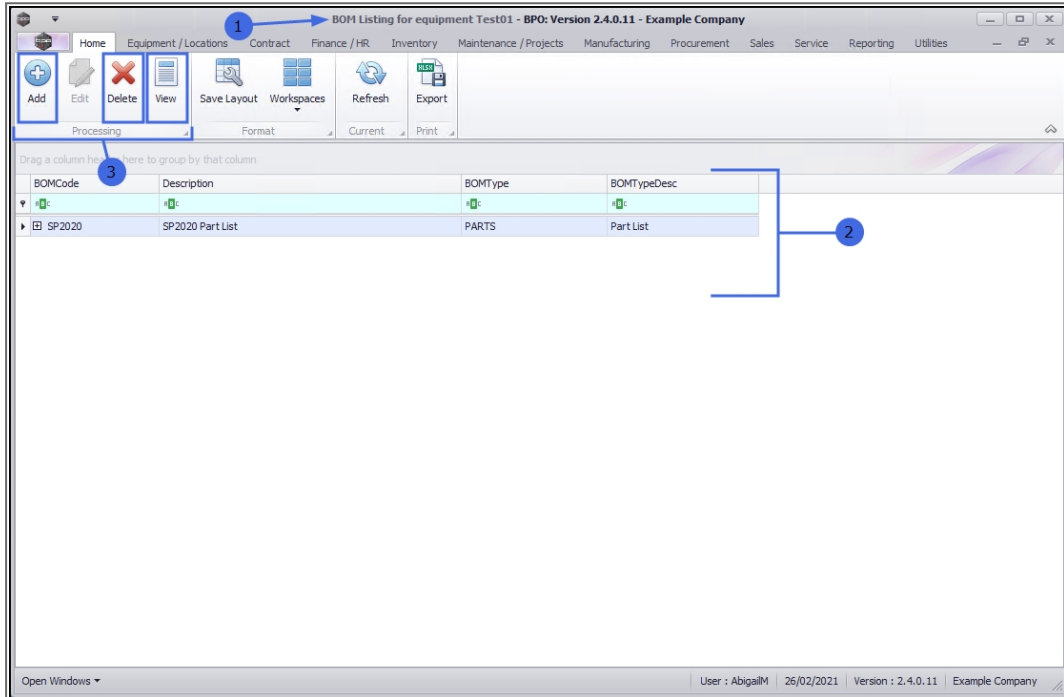
3. Select the **row** of the asset where you wish to view the linked Bill of Materials. The selected row will highlight.

4. In the Links panel, click on the **BOM** tile.

The screenshot displays the 'Machine List for Durban - BPO: Version 2.4.0.11 - Example Company' interface. The main area contains a table with columns: AssetRegNo, PartCode, Description, CategoryDesc, ParentType, ModelNo, SerialNo, Status, StartDate, Asset, and IsFixedAsset. The table lists various assets such as 'Sprint Colour Copier', 'SP2020 Sprint Colour MF Copier', and 'PC Monitor - Samsung'. On the left, a 'Links' panel shows several function tiles: 'WO History', 'Project History', 'Meters', 'History', 'BOM', 'Warranties', and 'Notes'. Red annotations are present: '1' points to the 'All Sites' dropdown in the top toolbar; '2' points to the 'Save Filter' button; '3' points to the 'BOM' tile in the Links panel; and '4' points to the 'Warranties' tile.

AssetRegNo	PartCode	Description	CategoryDesc	ParentType	ModelNo	SerialNo	Status	StartDate	Asset	IsFixedAsset
AREG000411	SP500	Sprint Colour Copier	Hardware	WHSE		AKM001002	A	15/02/2021	No	No
AREG000412	SP2020	SP2020 Sprint Colour MF Copier	Hardware	WHSE	SP2020	000001	A	11/02/2021	No	No
AREG000410	PCMON001	PC Monitor - Samsung	Accessories	WHSE		2020-9193	A	18/01/2021	No	No
AREG000409	17-856	Drum for SP1717	Spare Parts	WHSE		SP1717-08	A	24/04/2020	No	No
AREG000408	17-856	Drum for SP1717	Spare Parts	WHSE		SP1717-07	A	24/04/2020	No	No
AREG000407	17-856	Drum for SP1717	Spare Parts	WHSE		SP1717-06	A	24/04/2020	No	No
AREG000406	17-856	Drum for SP1717	Spare Parts	WHSE		SP1717-05	A	24/04/2020	No	No
AREG000405	17-856	Drum for SP1717	Spare Parts	WHSE		SP1717-04	A	24/04/2020	No	No
AREG000404	17-856	Drum for SP1717	Spare Parts	WHSE		SP1717-03	A	24/04/2020	No	No
AREG000403	17-856	Drum for SP1717	Spare Parts	WHSE		SP1717-02	A	24/04/2020	No	No
AREG000402	17-856	Drum for SP1717	Spare Parts	WHSE		SP1717-01	A	24/04/2020	No	No
AREG000401	SP2020	SP2020 Sprint Colour MF Copier	Hardware	WHSE	SP2020	Test02	A	22/04/2020	No	No
AREG000400	SP2020	SP2020 Sprint Colour MF Copier	Hardware	WHSE	SP2020	Test01	A	22/04/2020	No	No
AREG000399	16-856	Drum for SP1616	Spare Parts	WHSE			A	21/04/2020	No	No
AREG000365	SP2020	SP2020 Sprint Colour MF Copier	Hardware	WHSE	SP2020	SP2020-CON00...	A	17/04/2020	No	No
SIN123	1458-96523	K147 Kyocera Colour Copier	Kyocera Multif...	WHSE	K147	sin123	A	16/04/2020	No	No
	KZN-1227FB	Kruger ZN Fax Machine	Hardware	WHSE	ZN122	sin12345568	A	16/04/2020	No	No
AREG000398	AT500	AT500 Copier	Hardware	WKOR	AT500	asdf456	A	16/04/2020	No	No
AREG000397	AT500	AT500 Copier	Hardware	SINV	AT500	wqe12	A	16/04/2020	No	No
AREG000396	SP500	Sprint Colour Copier	Hardware	WHSE		Kam005	A	14/04/2020	No	No
AREG000395	SP500	Sprint Colour Copier	Hardware	WHSE		Kam004	A	14/04/2020	No	No
AREG000394	SP500	Sprint Colour Copier	Hardware	WHSE		Kam003	A	14/04/2020	No	No

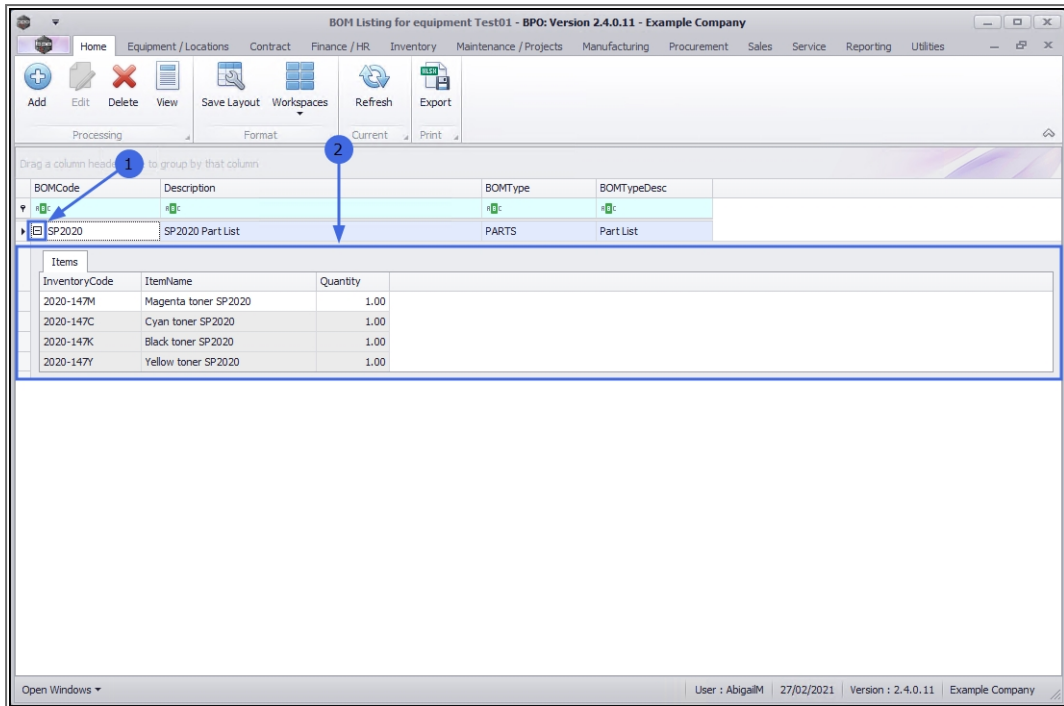
1. The **BOM Listing for equipment []** screen will open.
2. All the BOMs that have been linked to this equipment item will be listed here.
3. From this screen, you can [Add](#), [Delete](#) and [View](#) the linked BOMs.
 - **Note:** The **Edit** function is not available in this screen. Refer to [Create a BOM](#) for more information on editing a BOM.



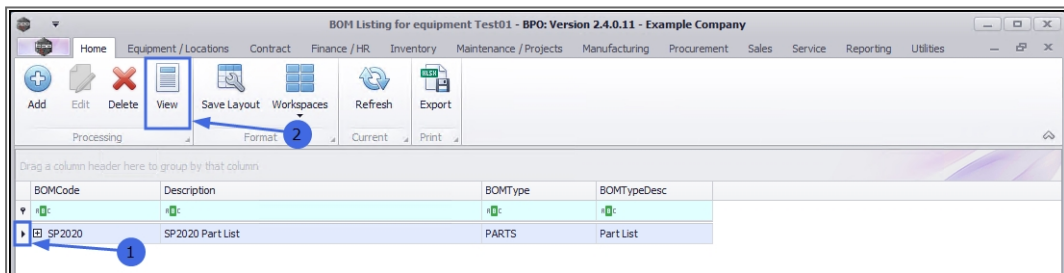
QUICK VIEW BOM ITEMS

1. To 'quick view' the BOM linked items in this screen, click on the **expand** button in the row of the BOM you wish to view.
2. The **Items** data grid will expand to display a data grid of all the parts and their quantities required for this BOM.

Collapse the data grid when you are done.



1. Select the **row** of the BOM .
2. Click on **View**.



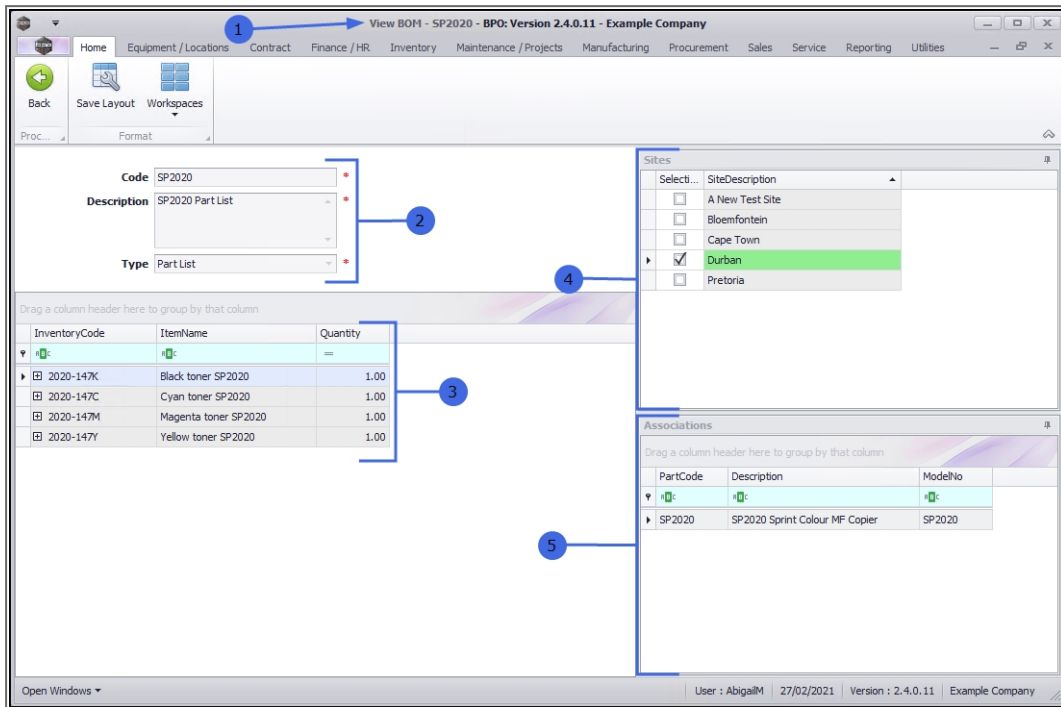
1. The **View BOM - []** screen will open.

You cannot edit the BOM details from here, note that there is only a **Back** button and no Save button.

You can view the following details:

2. The **Code**, **Description** and **Type** of the BOM.
3. A data grid of the linked **items** and their **quantities**, included in this BOM.

4. The **Sites** to which this particular BOM is linked.
5. The **Associations** or list of assets that are linked to this BOM.



VIEW AVAILABILITY AND LOCATION OF BOM ITEMS

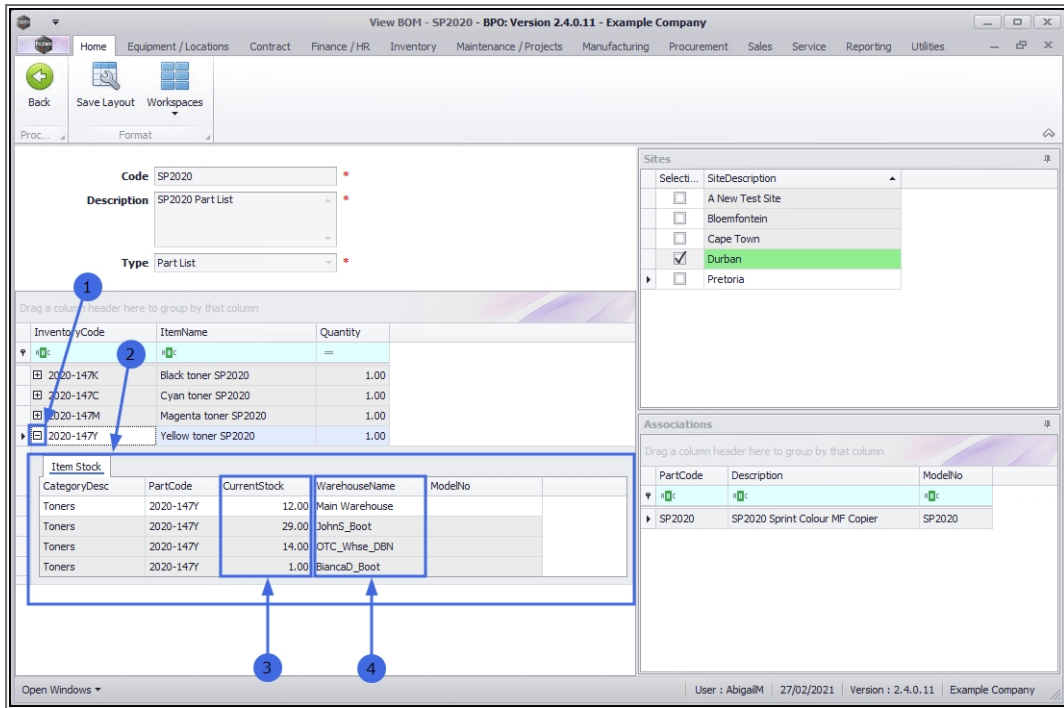
1. In the **Items** data grid, click on the expand button in the **row** of the item you wish to view.
 - In this example, Yellow Toner SP2020 is selected.
2. The **Item Stock** data grid for the selected part will be expanded.

Here you can view:

3. How much stock of this part is available (**Current Stock**).
4. Where this stock is available (**Warehouse Name**).

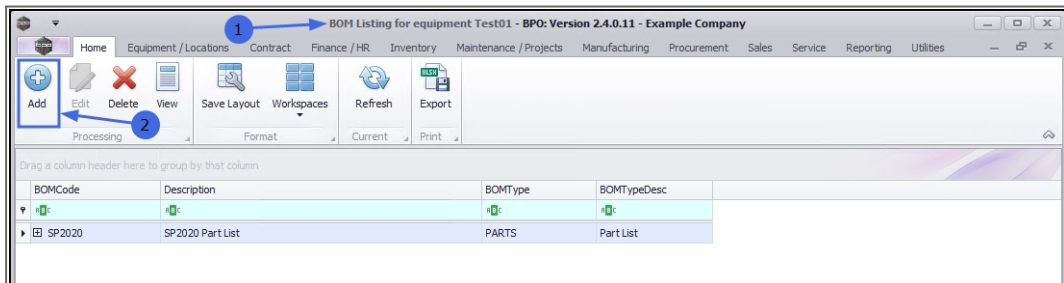
When you have finished viewing the items in this screen,

5. Click on **Back** to return to the **BOM Listing for equipment []** listing screen.

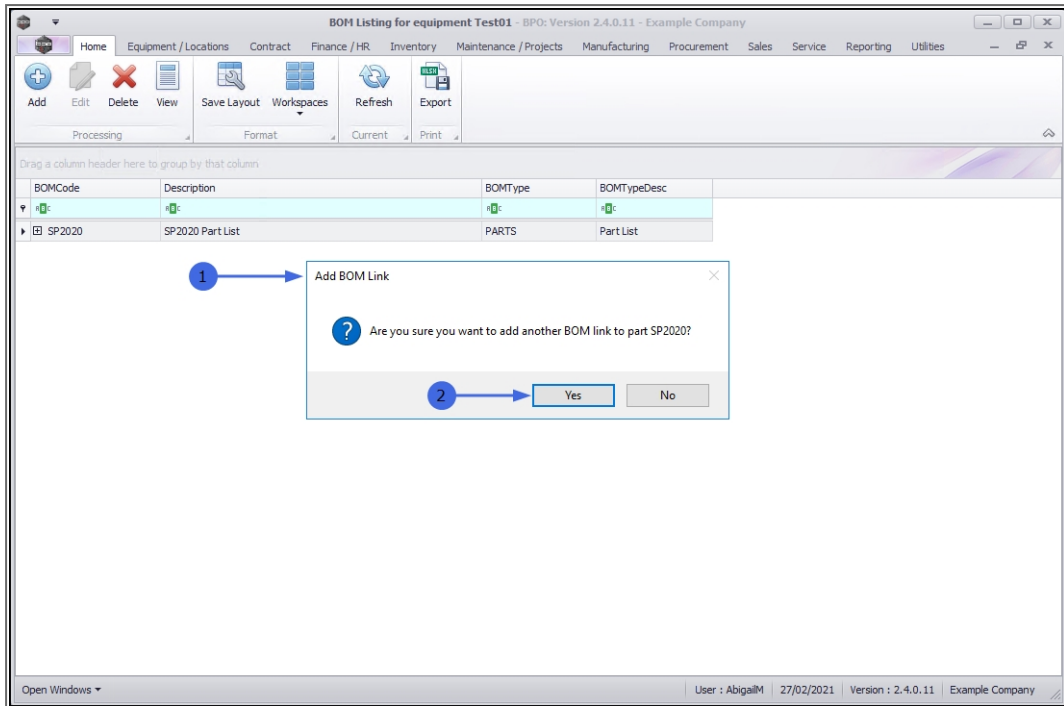


ADD BOM

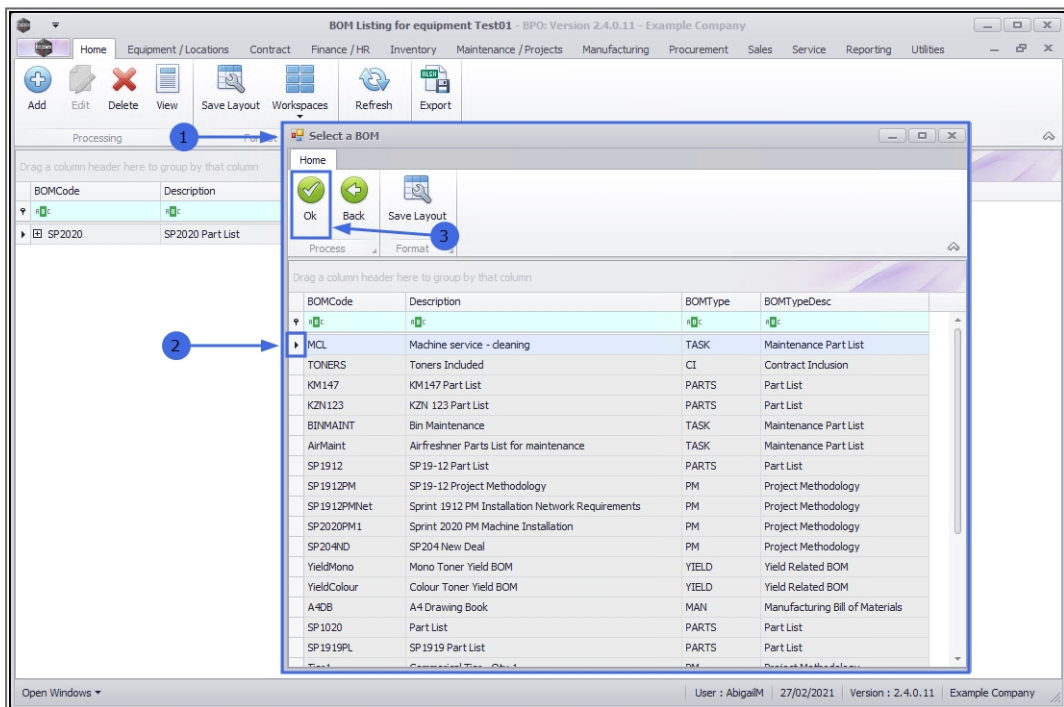
1. In the **BOM Listing for equipment []** screen,
2. Click on **Add**.



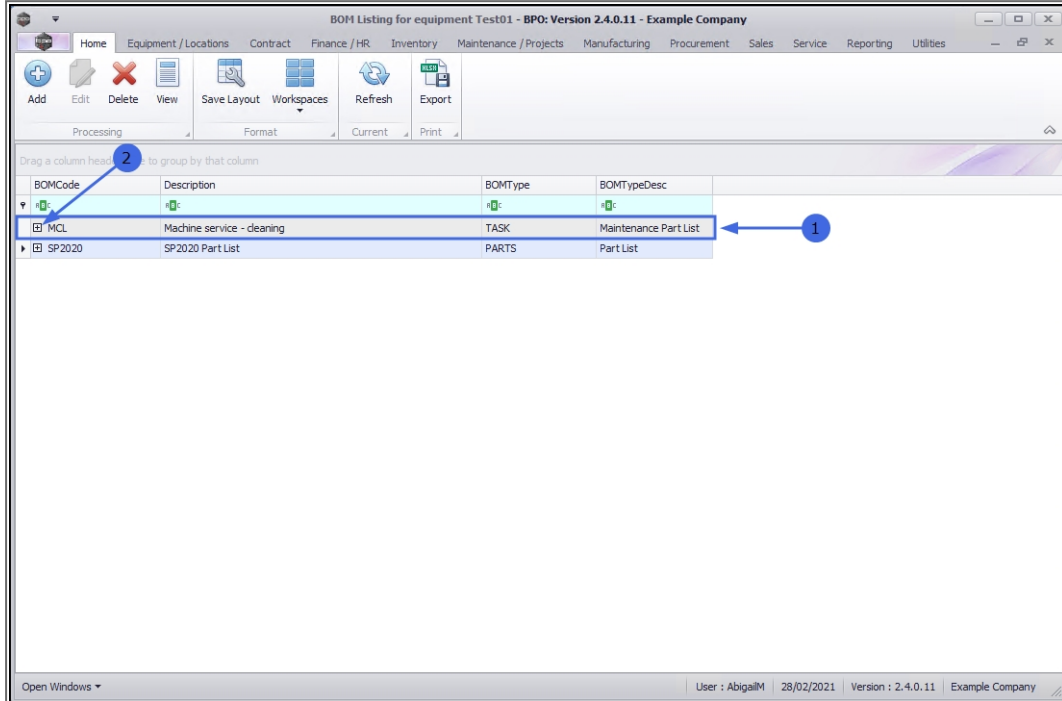
1. An **Add BOM Link** message box will pop up asking:
 - **Are you sure you want to add another BOM link to part []?**
2. Click on **Yes**.



1. The **Select a BOM** screen will pop up.
2. Select the **row** of the BOM you wish to add to this asset.
3. Click on **Ok**.

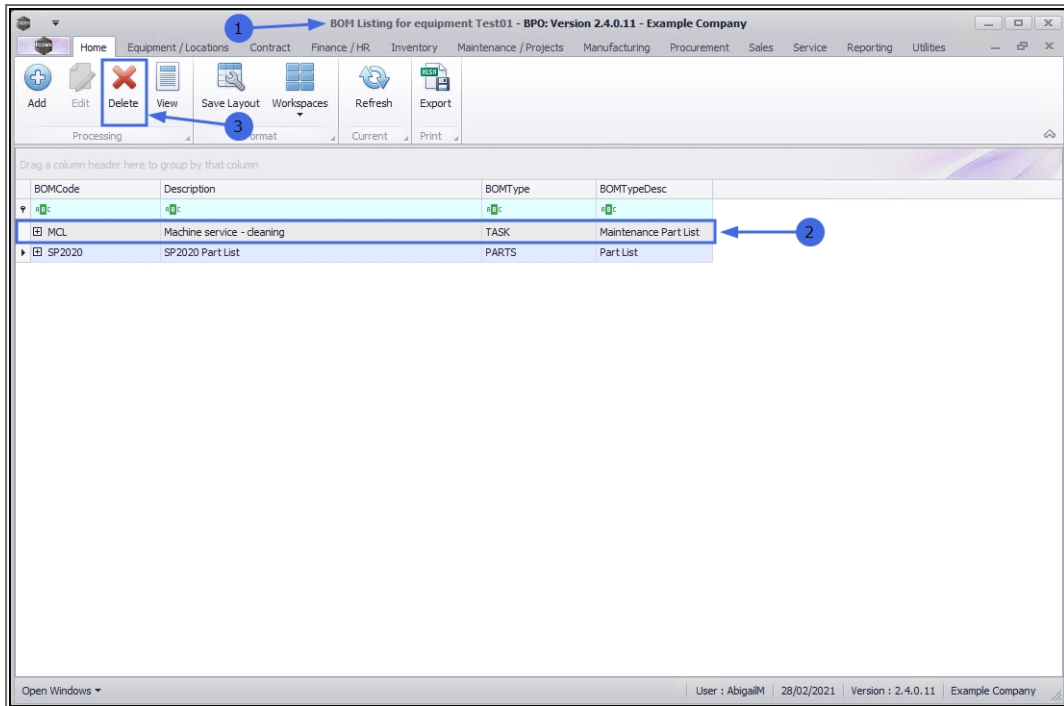


1. The selected BOM will be **added** to the list in this screen.
2. Click on the **expand** button if you wish to open the **Items** data grid to 'quick view' all the parts and their quantities required for this particular BOM.

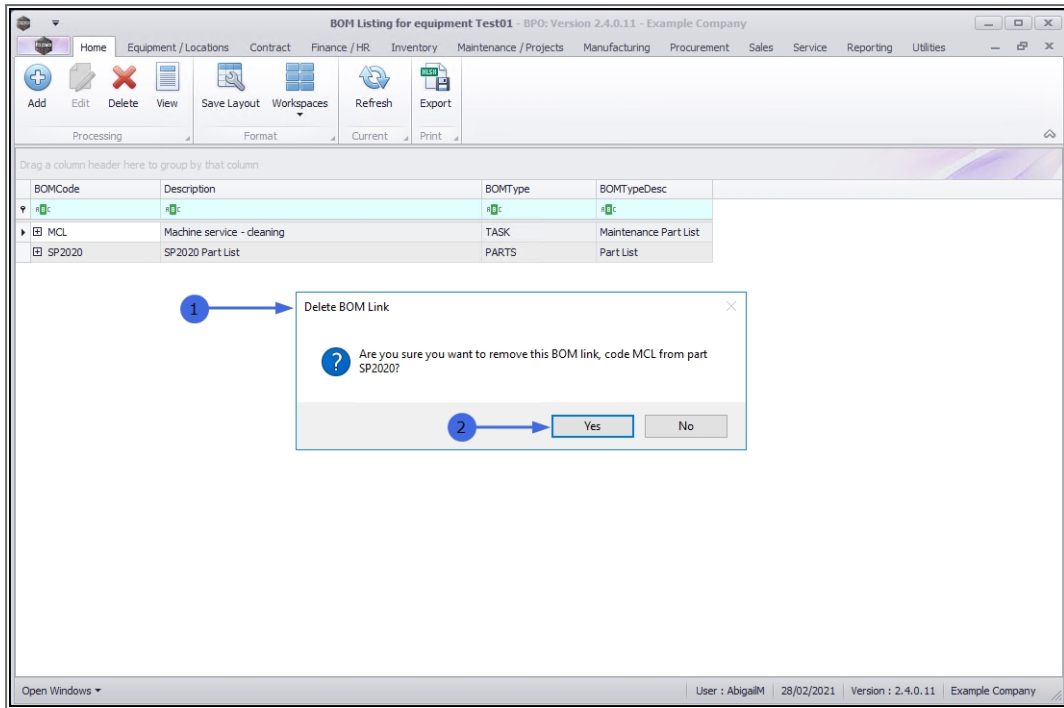


DELETE BOM

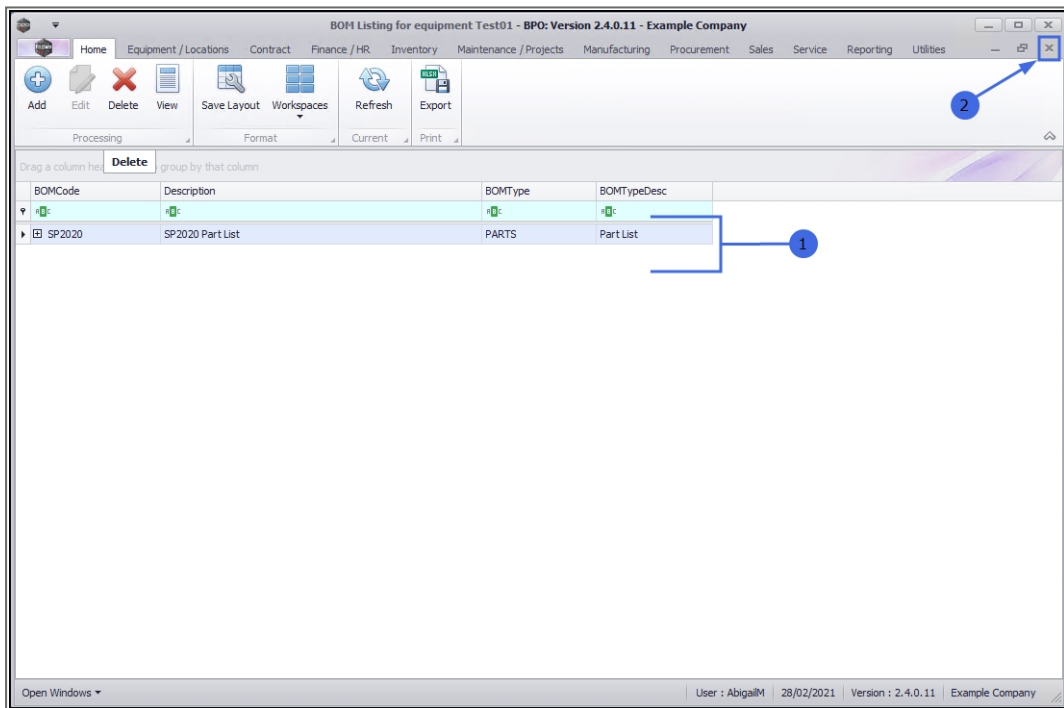
1. In the **BOM Listing for equipment []** screen,
2. Select the **row** of the linked BOM that you wish to **remove**.
3. Click on **Delete**.



1. A **Delete BOM Link** message box will pop up asking;
 - **Are you sure you want to remove this BOM link, code MCL from part SP2020.**
2. Click on **Yes**.



1. The selected BOM will be **deleted** from the list.
2. **Close** this screen to return to the **Machine List for []** screen.





MNU.008.002

