

We are currently updating our site; thank you for your patience.

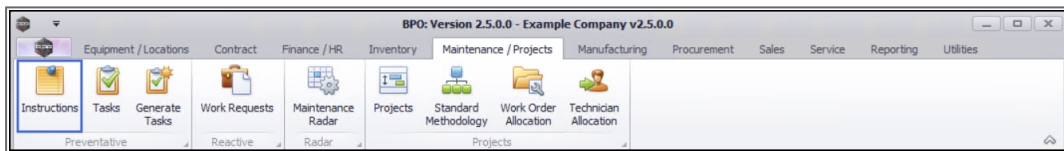
MAINTENANCE

INSTRUCTIONS – BILL OF MATERIALS

Linking Material Resource requirements to an instruction, gives you the ability to see which parts are required for the work to be done.

In order to link a Bill of Materials for parts required, you will need to ensure that one has been configured.

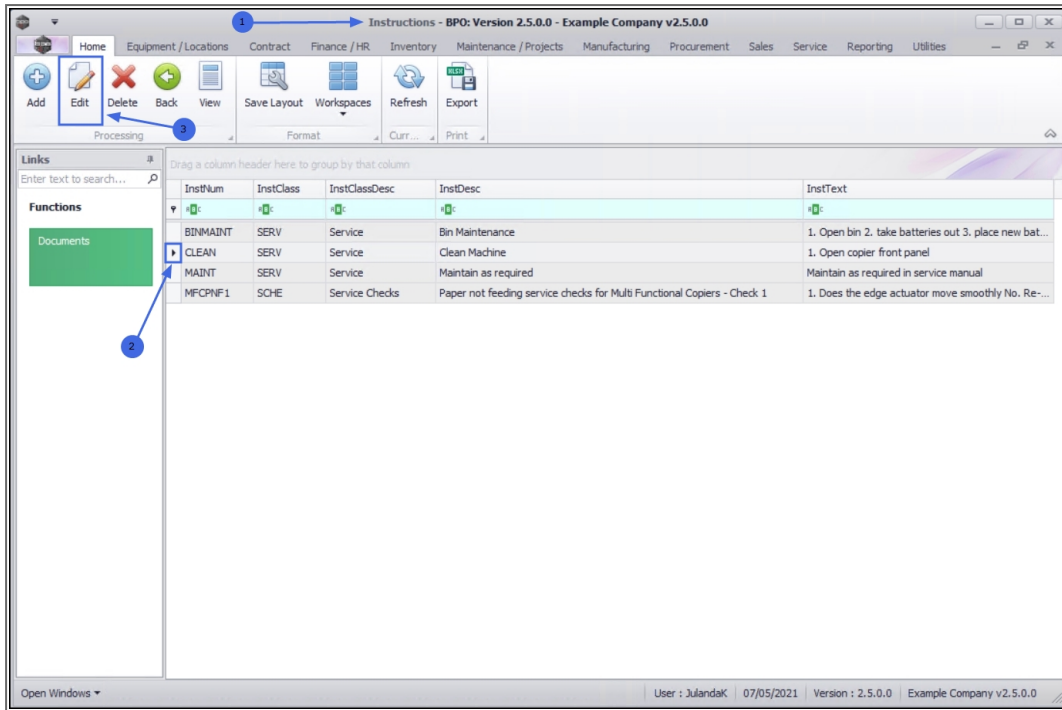
Ribbon Access: Maintenance / Projects > Instructions



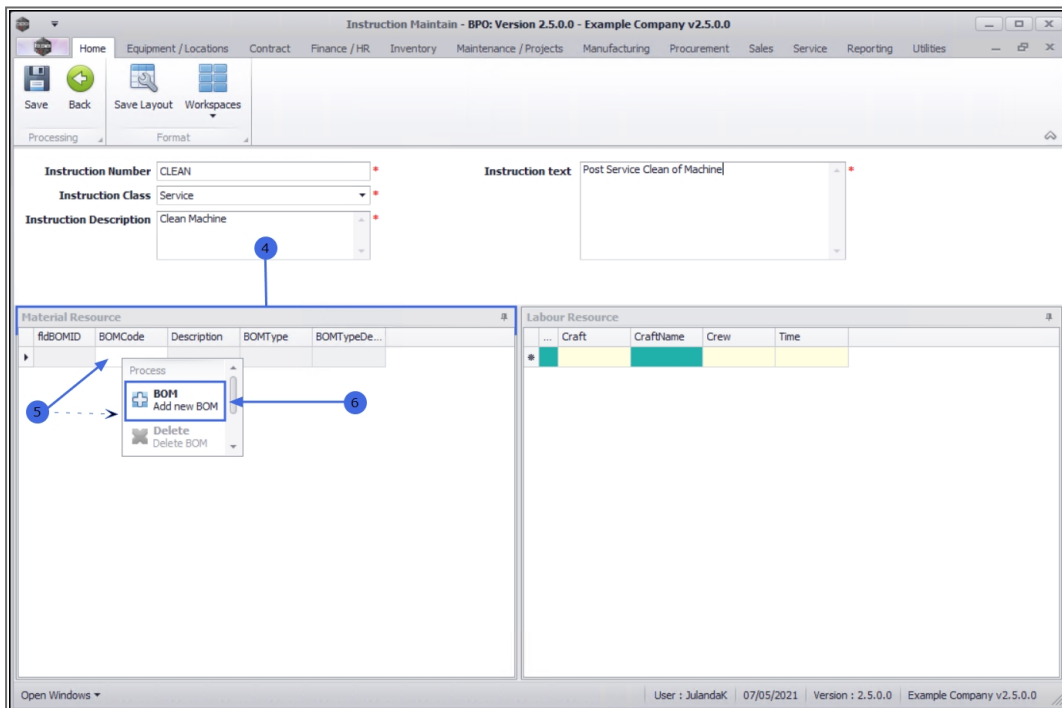
1. The **Instructions** listing screen will be displayed.
2. Click on the **row** of the instruction you wish to link a bill of materials to.
3. Click on **Edit**.



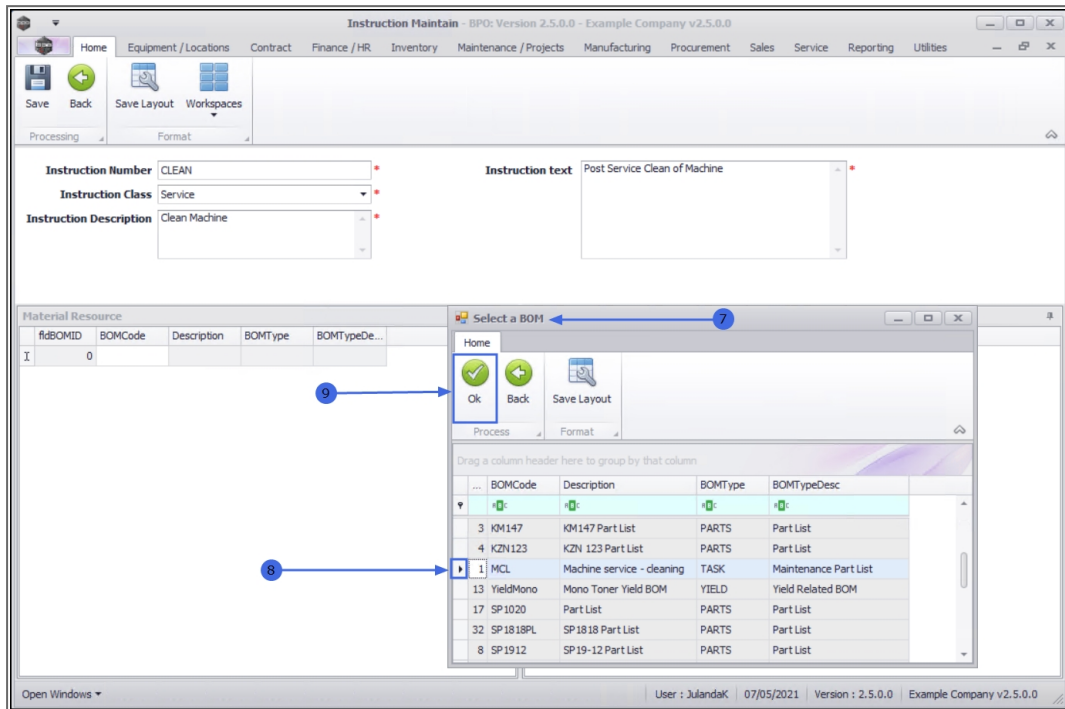
Short cut key: Right click to display the **Process** menu list. Click on **Edit**.



4. In the **Material Resources** docking panel,
5. Right click in the **BOM Code** text box to display the **Process** menu.
6. Click on **BOM - Add New BOM**.



7. The **Select a BOM** screen will be displayed.
8. Click on the **row** of the BOM that you wish to link to the instruction.
9. Click on **OK**.

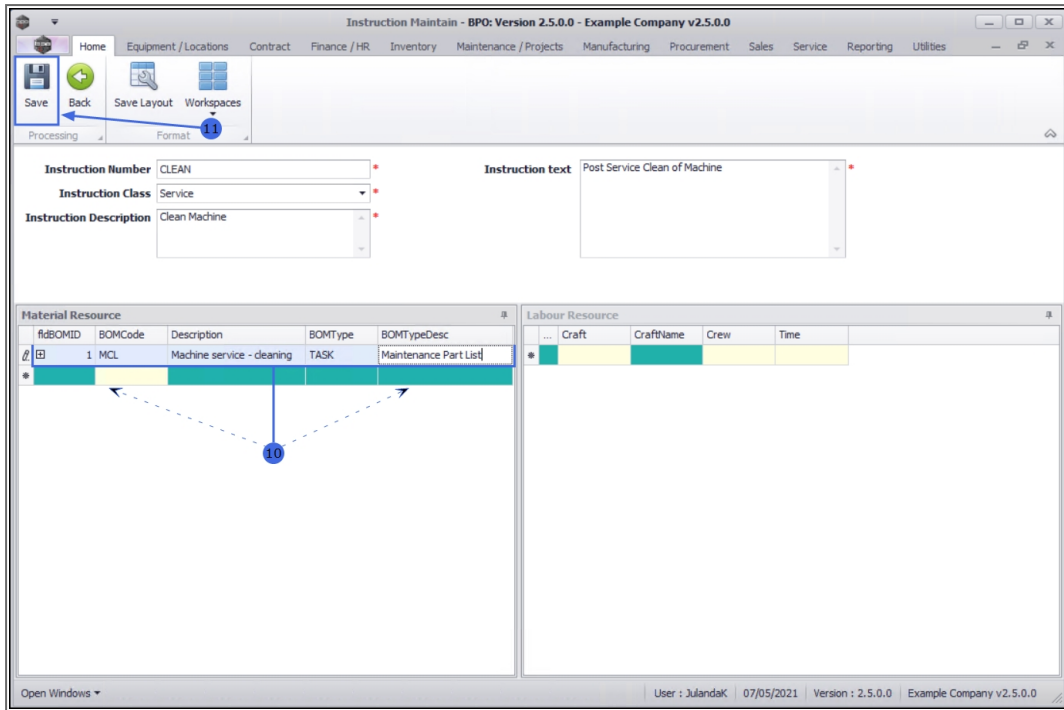


10. The selected BOM **details** will populate all the columns in the **Material Resource** data grid and a **new row** will be created.



Note that you can add more than one BOM (material resource) to an instruction.

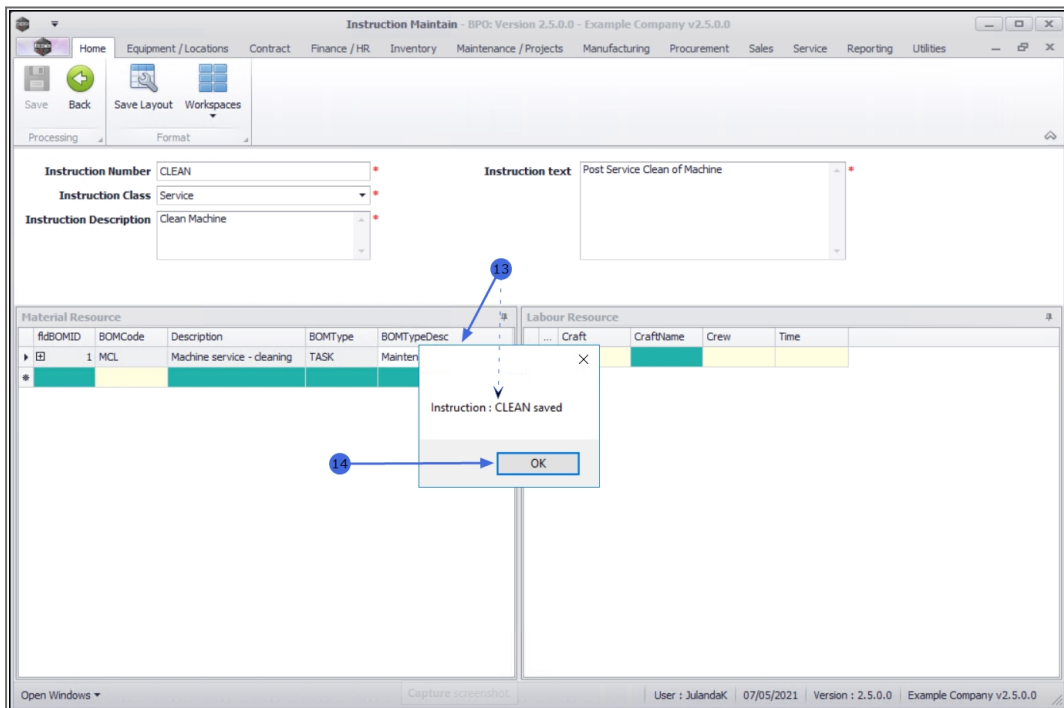
11. Continue adding BOM details as required.
12. When you have finished adding BOMs (material resources) click on **Save**.



13. When you will receive the message to confirm that;

- **Instruction : [abbrev/number] saved**

14. Click on **OK**.





Link a Bill Of Materials

The BOM (material resource) details will be **saved** and you will return to the **Instructions** listing screen.

MNU.043.003

