

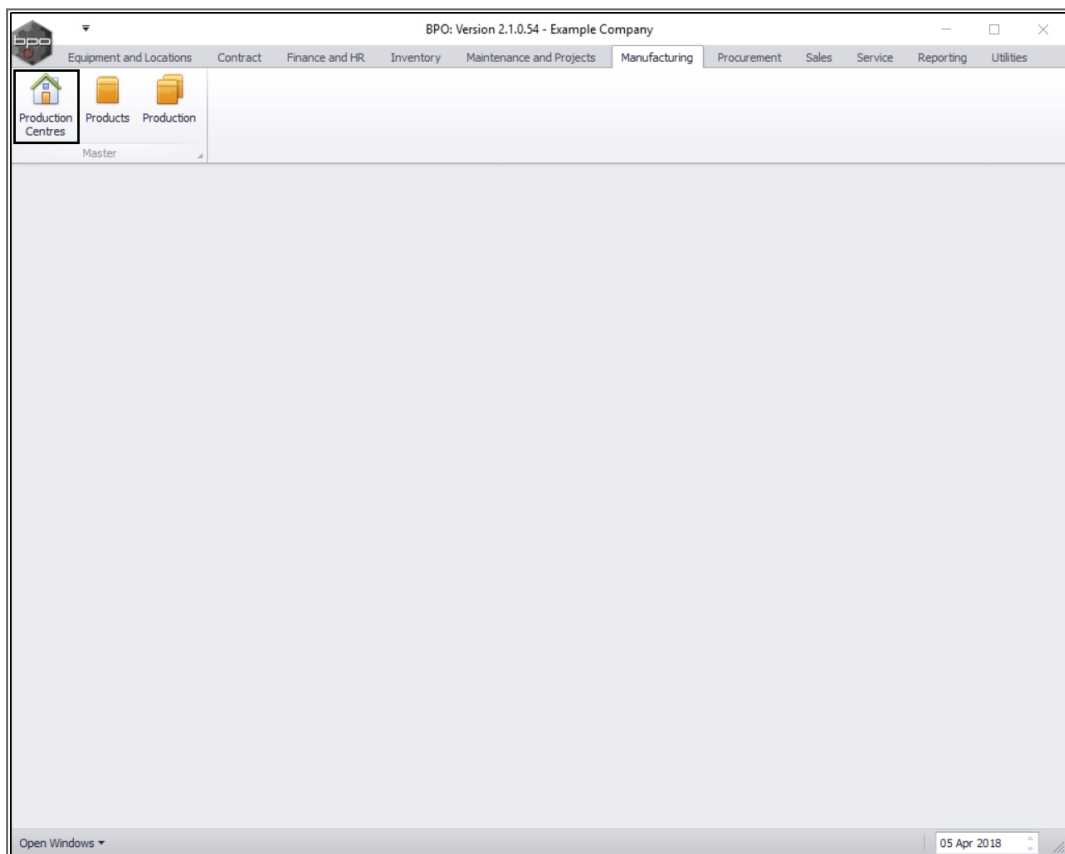
We are currently updating our site; thank you for your patience.

MANUFACTURING

PRODUCTION CENTRES – ADD A PRODUCTION CENTRE

A **production centre** needs to be set up in order to determine the relevant site, and general ledger account codes for transactional processing.

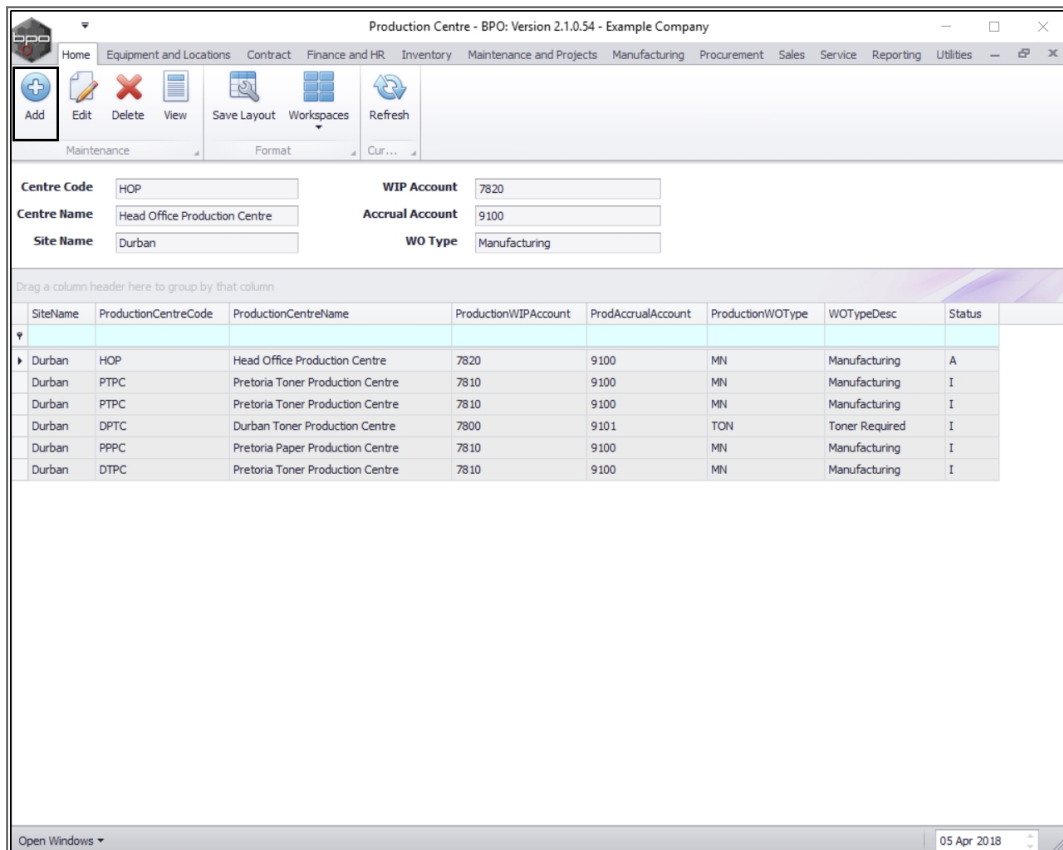
Ribbon Access: Manufacturing > Production Centres



- The **Production Centre** listing screen will be displayed.
- Here you can view a list of all the production centres currently set up on the system.

ADD A PRODUCTION CENTRE

- Click on **Add**.

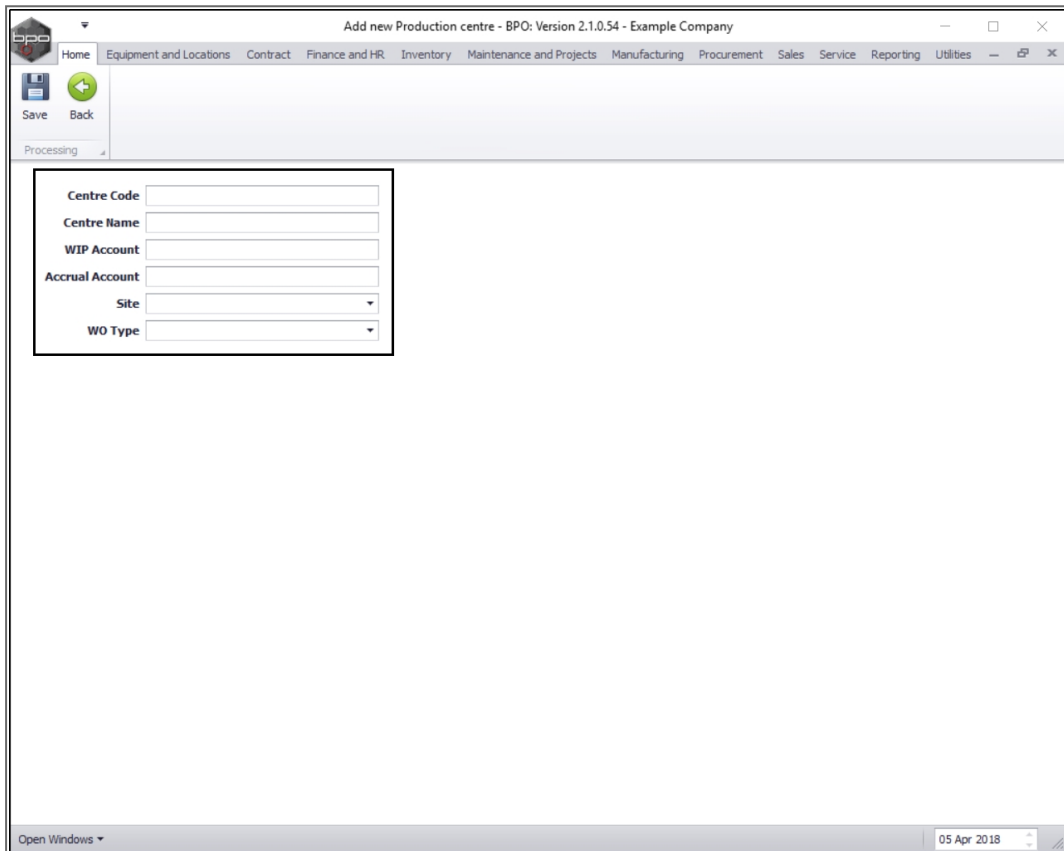


- The **Add New Production Centre** screen will be displayed.

ADD PRODUCTION CENTRE DETAILS

- **Centre Code:** Click in this text box and type in a **centre code**.
- **Centre Name:** Click in this text box and type in a **centre name**.

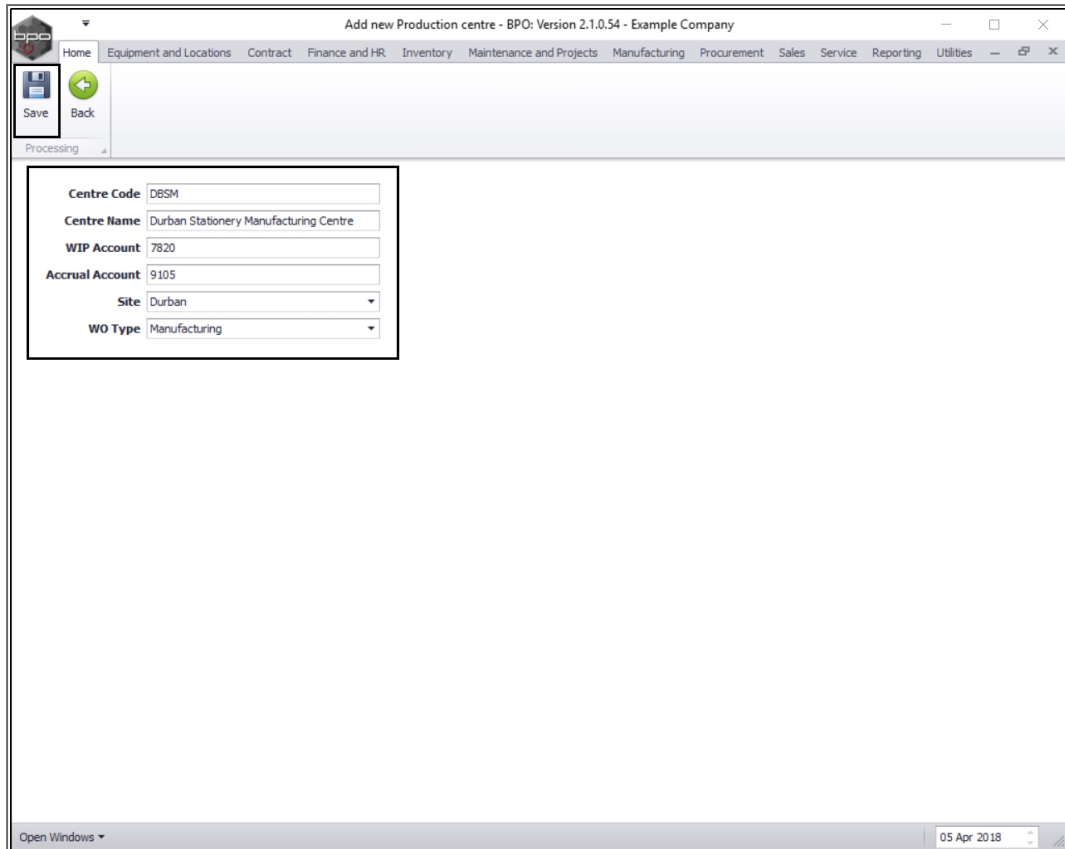
- **WIP Account:** Click in this text box and type in the **production work in progress** general ledger account code.
- **Accrual Account:** Click in this text box and type in the **production accrual** general ledger account code
- **Site:** Click on the drop-down arrow and select from the list, the **site** for this production centre.
- **WO Type:** Click on the drop-down arrow and select from the list, the **work order type** for this production centre.



| | |
|-----------------|----------------------|
| Centre Code | <input type="text"/> |
| Centre Name | <input type="text"/> |
| WIP Account | <input type="text"/> |
| Accrual Account | <input type="text"/> |
| Site | <input type="text"/> |
| WO Type | <input type="text"/> |

SAVE DETAILS

- When you have finished adding the new production centre details, click on **Save**.



Centre Code: DBSM

Centre Name: Durban Stationery Manufacturing Centre

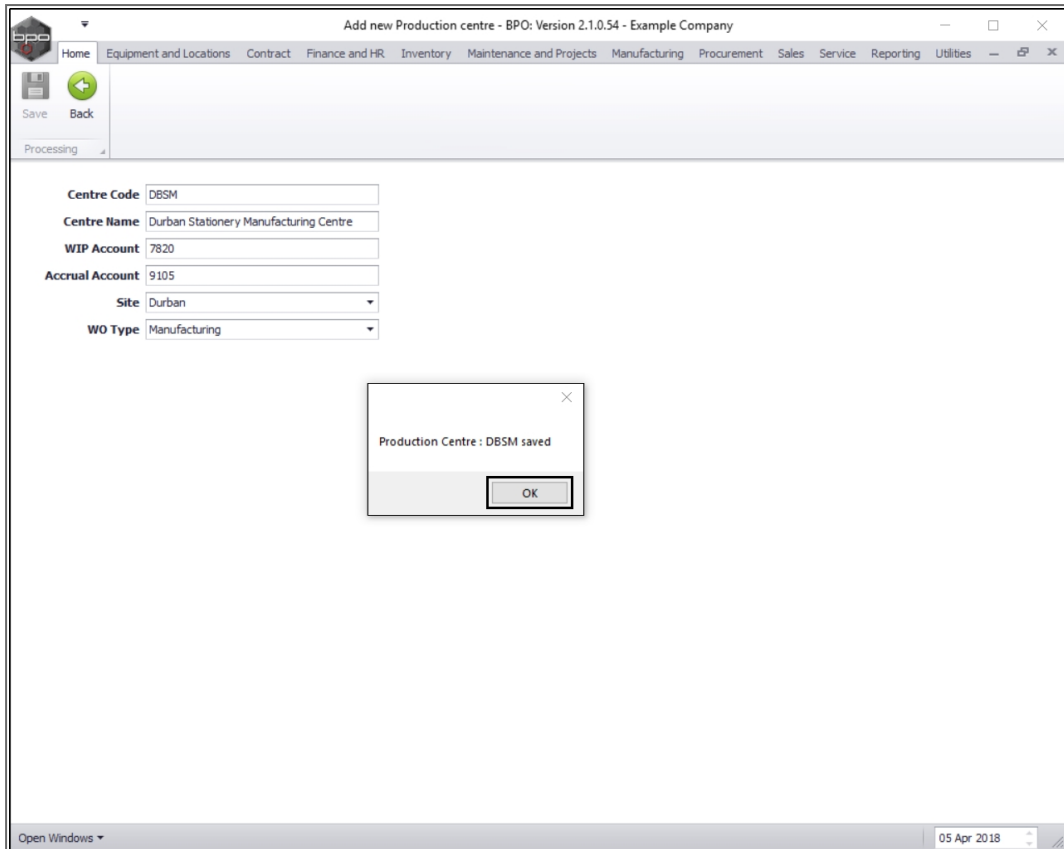
WIP Account: 7820

Accrual Account: 9105

Site: Durban

WO Type: Manufacturing

- A message box will pop up informing you that;
 - **Production Centre: [] saved.**
- Click on **OK**.



VIEW NEW PRODUCTION CENTRE

- The new production centre details will be **saved** and you will return to the **Production Centre** listing screen.
- Here you can view the new production centre details.

Production Centre - BPO: Version 2.1.0.54 - Example Company

Home | Equipment and Locations | Contract | Finance and HR | Inventory | Maintenance and Projects | Manufacturing | Procurement | Sales | Service | Reporting | Utilities

Add | Edit | Delete | View | Save Layout | Workspaces | Refresh

Maintenance | Format | Cur...

Centre Code: DBSM | WIP Account: 7820
 Centre Name: Durban Stationery Manufacturing C | Accrual Account: 9105
 Site Name: Durban | WO Type: Manufacturing

Drag a column header here to group by that column

| SiteName | ProductionCentreCode | ProductionCentreName | ProductionWIPAccount | ProdAccrualAccount | ProductionWOType | WOTypeDesc | Status |
|----------|----------------------|--|----------------------|--------------------|------------------|----------------|--------|
| Durban | HOP | Head Office Production Centre | 7820 | 9100 | MN | Manufacturing | A |
| Durban | PTPC | Pretoria Toner Production Centre | 7810 | 9100 | MN | Manufacturing | I |
| Durban | PTPC | Pretoria Toner Production Centre | 7810 | 9100 | MN | Manufacturing | I |
| Durban | DPTC | Durban Toner Production Centre | 7800 | 9101 | TON | Toner Required | I |
| Durban | PPPC | Pretoria Paper Production Centre | 7810 | 9100 | MN | Manufacturing | I |
| Durban | DTPC | Pretoria Toner Production Centre | 7810 | 9100 | MN | Manufacturing | I |
| Durban | DDPC | Durban Drum Production Centre | 7820 | 9105 | MN | Manufacturing | I |
| Durban | DBSM | Durban Stationery Manufacturing Centre | 7820 | 9105 | MN | Manufacturing | A |

Open Windows | 05 Apr 2018

MNU.051.003