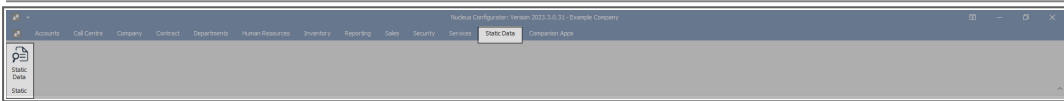


We are currently updating our site; thank you for your patience.

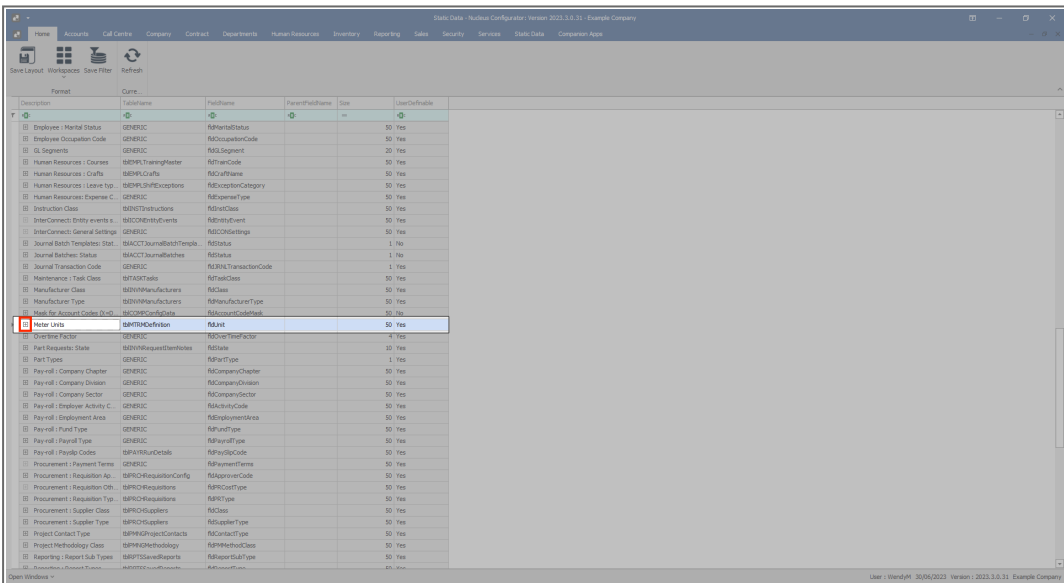
STATIC DATA

STATIC DATA - WARRANTIES: METER UNITS

Ribbon Access: Configurator > Static Data> Static Data



- The **Static Data** listing screen will be displayed.
- Use the **filter row** or **scroll down** the list until you find the **Meter Units** row.
- Click on the **expand** icon in this row.



- The Meter Units **Codes** frame will be expanded.
- Here you can view a list of **meter unit types** currently on the system.

Code	CodeDescription	CodeType	SortOrder	Status
Capex	Capex made	None	4	A
Cycle	Cycles	None	1	A
DegC	Degress Celsius	None	3	A
Kn	Kilowattres	None	2	A

- Right click anywhere in a **row** of the **Codes** data grid.
- A **Process** menu will pop up.
- Click on **Add** - Add New Code.

Code	CodeDescription	CodeType	SortOrder	Status
Capex	Capex made	None	4	A
Cycle	Cycles	None	1	A
DegC	Degress Celsius	None	3	A
Kn	Kilowattres	None	2	A

- The **final row** in the Codes data grid will now be '**activated**'.
- The **Code Type, Status** and **Sort Order** columns will now be populated.

Description	Code	Code Description	Code Type	Sort Order	Status
Employee - Marital Status	GENERIC	RPHmarStat	50	Yes	
Employee Occupation Code	GENERIC	RBOccupCode	50	Yes	
GL Segments	GENERIC	RGLSegment	20	Yes	
Human Resources - Courses	GENERIC	RHRtrnCode	50	Yes	
Human Resources - Crafts	GENERIC	RHRtrnCode	50	Yes	
Human Resources - Loans	GENERIC	RHRloanCategory	50	Yes	
Human Resources - Expense C.	GENERIC	RHRexpenseType	50	Yes	
Instruction Class	GENERIC	RHRinstrClass	50	Yes	
InterConnect - Entry events	GENERIC	RHRintEvent	50	Yes	
InterConnect - General Settings	GENERIC	RHRintSetting	50	Yes	
Journal Batch Templates - Stat.	GENERIC	RHRjBatchTemplate	1	No	
Journal Batchwise - Status	GENERIC	RHRjBatch	1	No	
Journal Transaction Code	GENERIC	RHRjTranCode	1	Yes	
Maintenance - Task Class	GENERIC	RHRtaskClass	50	Yes	
Manufacturer Class	GENERIC	RHRmanClass	50	Yes	
Manufacturer Type	GENERIC	RHRmanType	50	Yes	
Mask for Account Codes (Y-N)	GENERIC	RHRmaskCodeMask	50	Yes	
Meter Units	GENERIC	RHRmeterUnit	50	Yes	

Code	Code Description	Code Type	Sort Order	Status
Copies made	Copies made	None	4	A
Cycle	Cycle	None	1	A
DegC	Degree Celsius	None	3	A
Km	Kilometres	None	2	A
		None	0	A

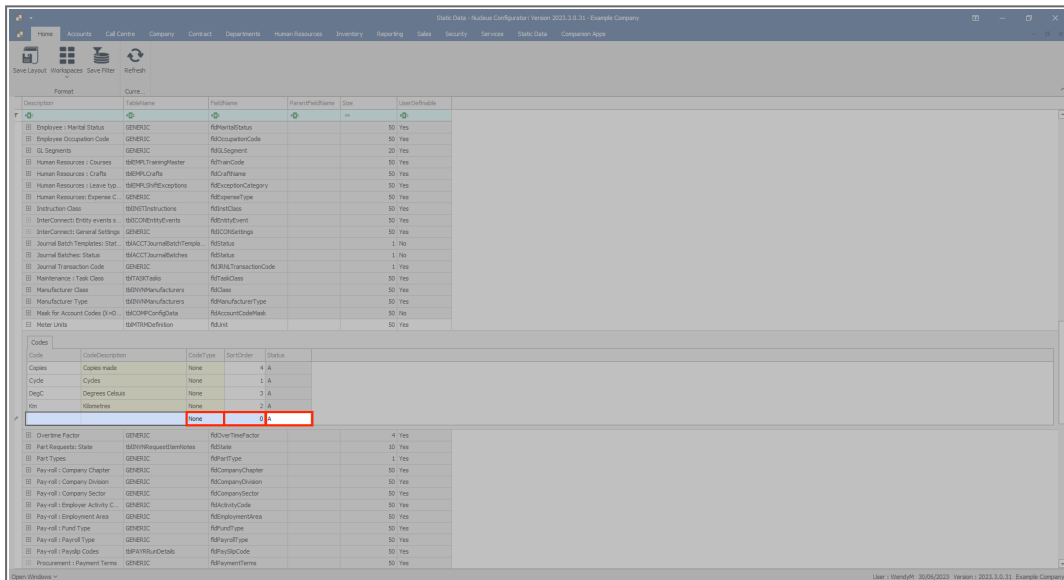
- **Code:** Click in this text box and type in a **code** specific for this new meter unit.
- **Code Description:** Click in this text box and type in a **description** for this new meter unit code.

Description	Code	Code Description	Code Type	Sort Order	Status
Employee - Marital Status	GENERIC	RPHmarStat	50	Yes	
Employee Occupation Code	GENERIC	RBOccupCode	50	Yes	
GL Segments	GENERIC	RGLSegment	20	Yes	
Human Resources - Courses	GENERIC	RHRtrnCode	50	Yes	
Human Resources - Crafts	GENERIC	RHRtrnCode	50	Yes	
Human Resources - Loans	GENERIC	RHRloanCategory	50	Yes	
Human Resources - Expense C.	GENERIC	RHRexpenseType	50	Yes	
Instruction Class	GENERIC	RHRinstrClass	50	Yes	
InterConnect - Entry events	GENERIC	RHRintEvent	50	Yes	
InterConnect - General Settings	GENERIC	RHRintSetting	50	Yes	
Journal Batch Templates - Stat.	GENERIC	RHRjBatchTemplate	1	No	
Journal Batchwise - Status	GENERIC	RHRjBatch	1	No	
Journal Transaction Code	GENERIC	RHRjTranCode	1	Yes	
Maintenance - Task Class	GENERIC	RHRtaskClass	50	Yes	
Manufacturer Class	GENERIC	RHRmanClass	50	Yes	
Manufacturer Type	GENERIC	RHRmanType	50	Yes	
Mask for Account Codes (Y-N)	GENERIC	RHRmaskCodeMask	50	Yes	
Meter Units	GENERIC	RHRmeterUnit	50	Yes	

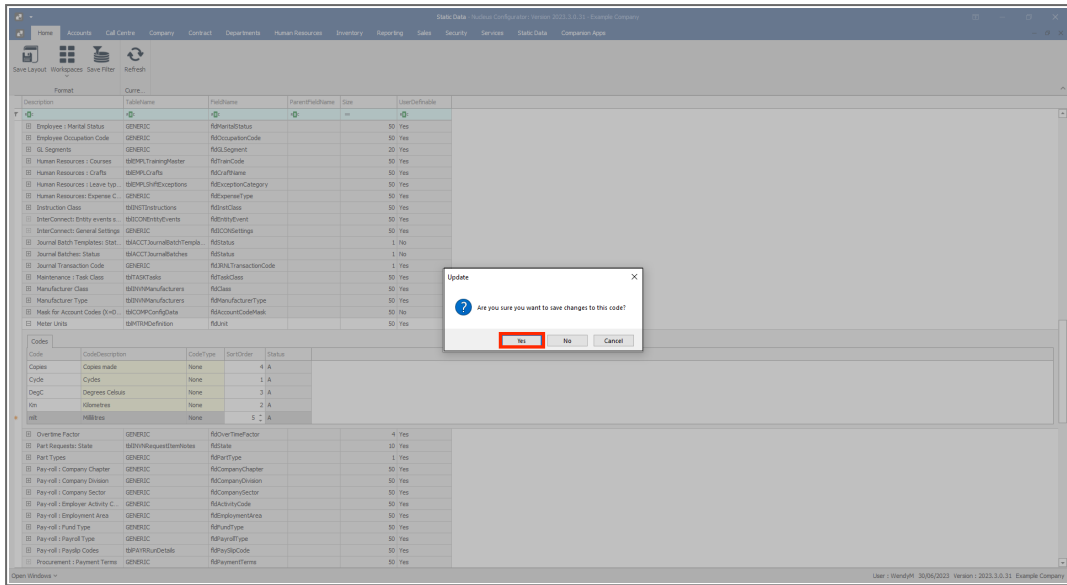
Code	Code Description	Code Type	Sort Order	Status
Copies made	Copies made	None	4	A
Cycle	Cycle	None	1	A
DegC	Degree Celsius	None	3	A
Km	Kilometres	None	2	A
		None	0	A

- **Code Type:** This can remain as **None**.
- **Status:** This will auto populate with **A** - Active.

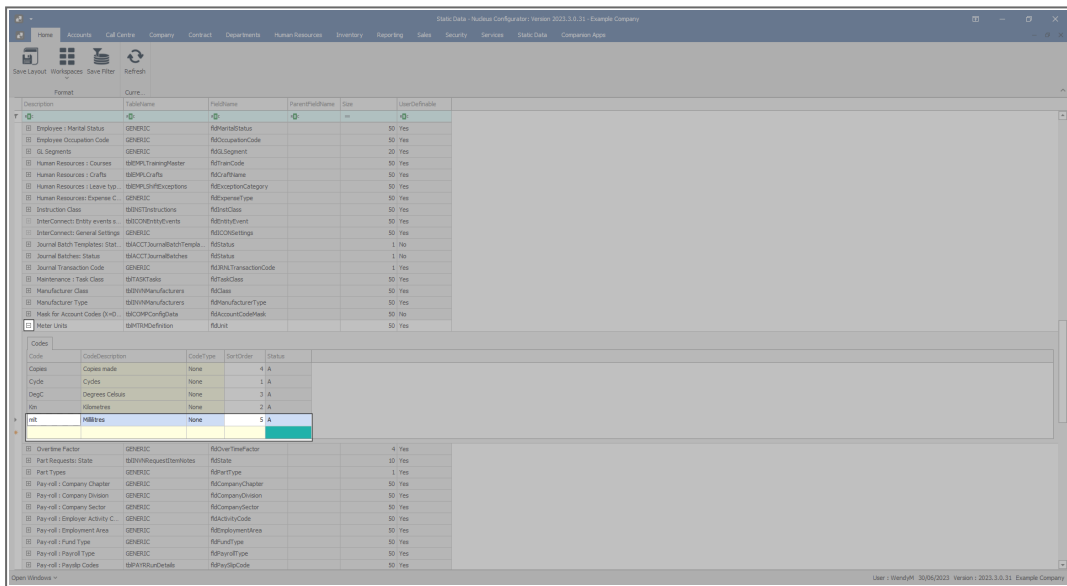
- **Sort Order:** Click in this text box and either type in or use the arrow indicators to select the sort order for this new meter unit code.
 - **Note:** The **sort order** is the order in which this will appear in the meter units code drop-down list in Nucleus Configurator . If each meter unit code has the number **1**, then the drop-down list will usually default to an alphabetical order in Nucleus Configurator . If, for example, it is numbered **2**, then it will appear **2nd** in the drop-down list in Nucleus Configurator .



- When you have finished adding the new meter unit code details, press **Enter**.
- An **Update** message box will appear, asking;
 - **Are you sure you want to save changes to this code?**
- Click on **Yes**.



- The new meter unit type code will be **saved** and a **new row** will be added to the **Codes** data grid.
- **Collapse** the Codes frame when you are done.



MNU.108.016

