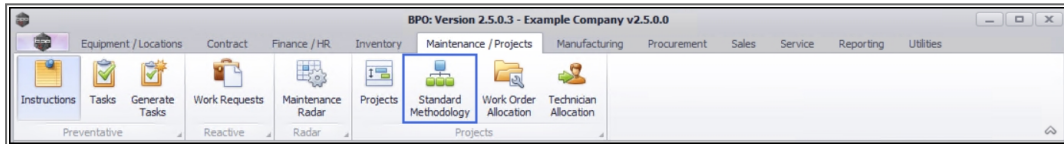


We are currently updating our site; thank you for your patience.

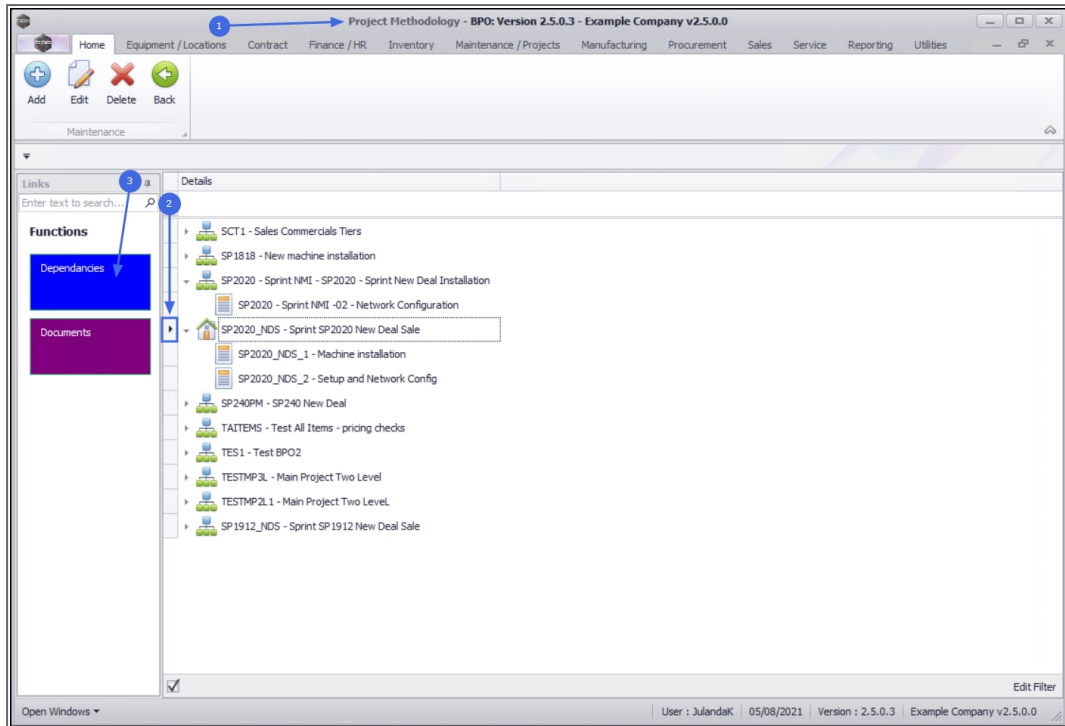
## PROJECTS

### STANDARD METHODOLOGY - DEPENDANCIES

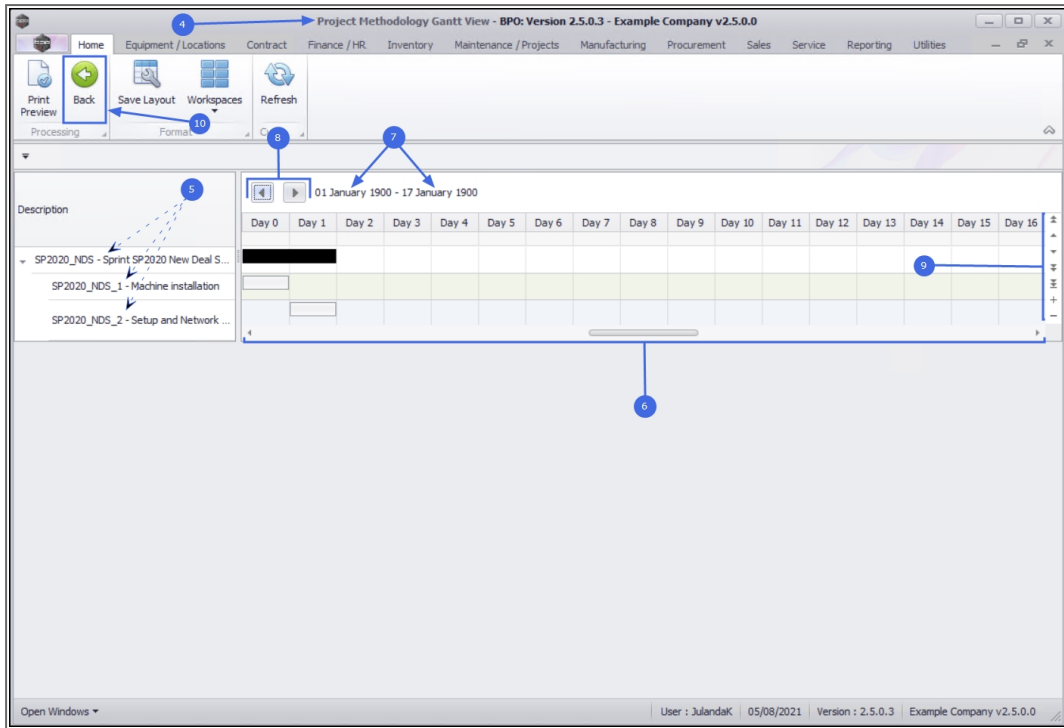
**Ribbon Access:** Maintenance / Projects > Standard Methodology



1. The **Project Methodology** screen will be displayed.
2. Click on the **row** of the Methodology layer you wish to view the Project dependancies for.
3. Click on the **Dependancies** tile.



4. The **Project Methodology Gantt View** for the main project layer with all sub-layers will display.
5. **Description** frame will list the descriptions for the Main and Sub-projects.
6. **Gantt Chart** frame displays a visual format, how the project will be rolled out from start to finish.
7. The **start and end dates** for the project methodology is displayed.
8. The **forward and back** navigation buttons allows you to scroll through the project to view the duration of each layer in the methodology.
9. The **side navigation** allows you to scroll up and down a complex layered project methodology.
10. Click on **Back** to return to the Project Methodology screen.



## Related Topics

- [Print Preview](#)

MNU.153.012

