

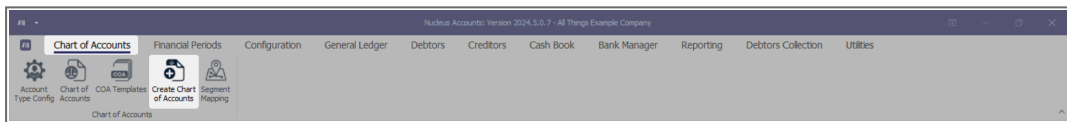
CHART OF ACCOUNTS

ADD CHART OF ACCOUNTS - INTRODUCTION

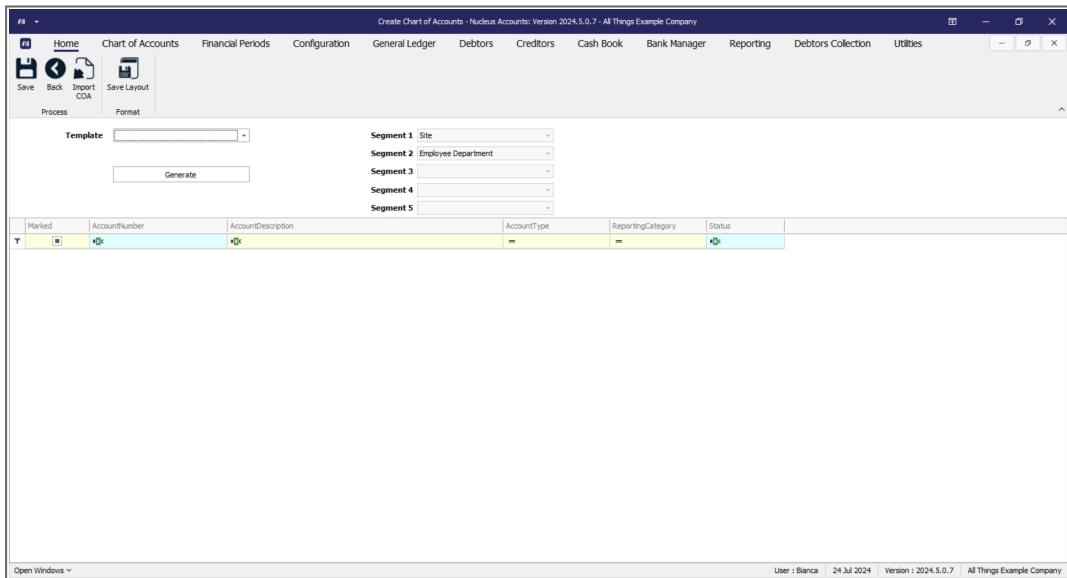
The **Create Chart of Accounts** screen gives you the ability to create a new COA from a predefined [COA Template](#).

ADD CHART OF ACCOUNTS LISTING SCREEN

Ribbon Select Chart of Accounts - Create Chart of Accounts



- The **Create Chart of Accounts** maintain screen will be displayed.

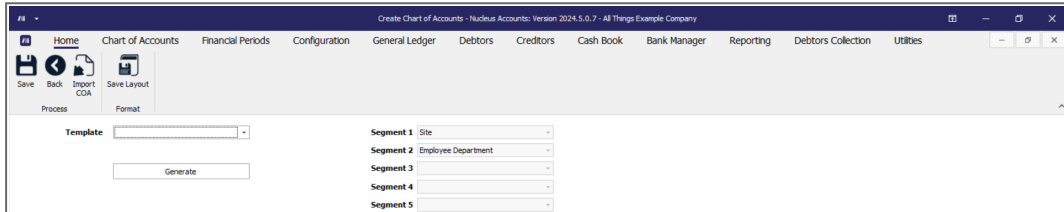


ACTION BUTTONS

PROCESS

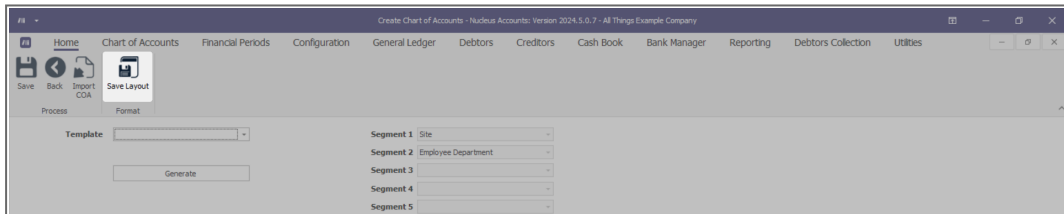
From this screen, you can:

- [Create](#) a new Chart of Accounts, by Importing a COA from a [COA Template](#).



FORMAT

- **Save Layout** - Saves any changes made to the data grid, such as changing column width.



Related Topics

- [COA Template Intro](#)
- [Introduction to Add Chart of Accounts](#)
- [Create Chart of Accounts](#)
- [Chart of Accounts](#)

ACCT.COA.ACOA.Intro