

We are currently updating our site; thank you for your patience.

# INVENTORY

## BOMS – INTRODUCTION TO BOMS

A **Bill of Materials** is a list of **part definitions** with their **quantities**, used to define such things as:

### BOM DEFINITIONS

---

#### PARENT CHILD BOM

---

- These are parts used to make up a product, e.g. toners and rollers that are specific to a certain model copier machine.
  - A **BOM** is set up and linked to the **main part definition** (i.e. the equipment/machine part number). When a part is requested in the **Call** screen, the system will list the linked **BOM** or parts specific to make up this product or main part definition.

#### BOM INCLUSIONS

---

These are parts which are 'included' in a contract (and therefore not billed).

- A **BOM** is set up and linked to the contract.
- When a linked part is requested in the **Call** screen, the system will indicate that it is included in the contract, by marking the item included as 'not billable'.

## TASK BOM

- These are parts that are required to perform a **Task**, for example, a machine repair or overhaul.
  - A **BOM** is set up and linked to the **Task**.
  - When a **Task** is generated, the system will automatically raise a part(s) request for the linked part(s) required.

## BENEFITS OF A BOM

A **Bill of Materials** helps visualize how assets and parts are related - what and how many components (parts) are required to make up an item (asset).

**Maintenance Technicians** use BOMs to identify the parts and quantities they will need from store to repair an item.

**Maintenance Planners** use BOMs to identify what parts and quantities to buy or re-order.

### Ribbon Select Inventory > BOM



- The **BOM Listing** screen will be displayed.

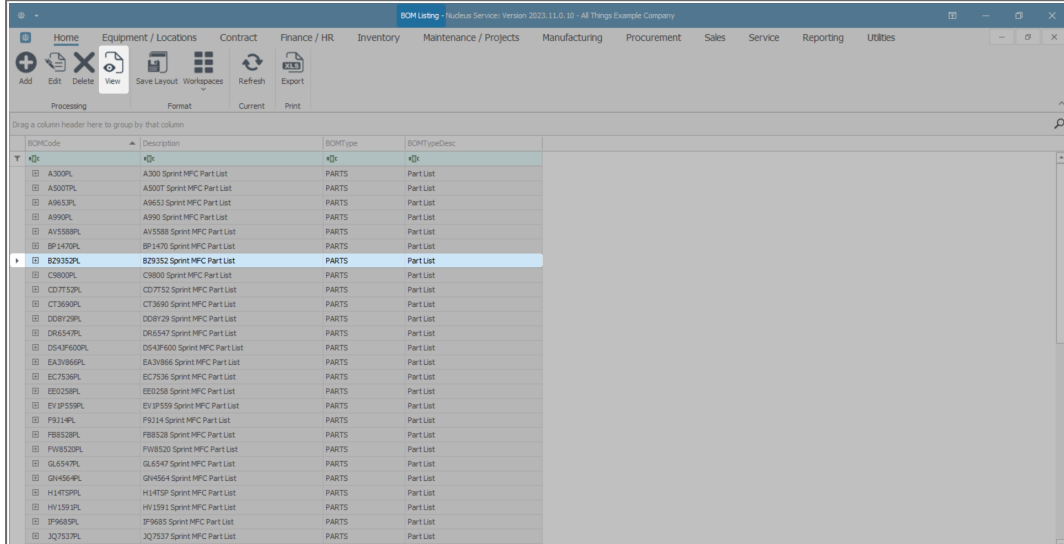
## THE BOM LISTING SCREEN

This will show you a list of all the **Bills of Materials** set up on the system.

Each **BOM** listed will store information relevant to that **BOM**, such as the **parts** and their **quantities** which make up the **BOM**.

## VIEW SELECTED BOM DETAILS

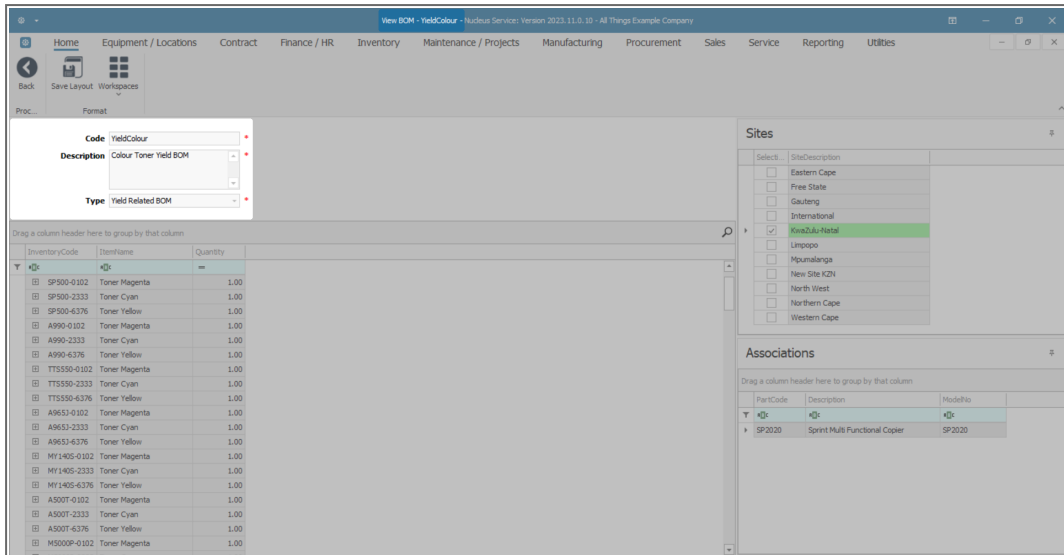
- Select the **row** of the **BOM** where you wish to view the **details**.
- Click on **View**.



BOMCode	Description	BOMType	BOMTypeDesc
A300PL	A300 Sprint MFC Part List	PARTS	Part List
A5007PL	A5007 Sprint MFC Part List	PARTS	Part List
A9653PL	A9653 Sprint MFC Part List	PARTS	Part List
A990PL	A990 Sprint MFC Part List	PARTS	Part List
AV5588PL	AV5588 Sprint MFC Part List	PARTS	Part List
BP1470PL	BP1470 Sprint MFC Part List	PARTS	Part List
<b>BQ395PL</b>	<b>BQ395 Sprint MFC Part List</b>	<b>PARTS</b>	<b>Part List</b>
C8280PL	C8280 Sprint MFC Part List	PARTS	Part List
CD7753PL	CD7753 Sprint MFC Part List	PARTS	Part List
CT3690PL	CT3690 Sprint MFC Part List	PARTS	Part List
DOB729PL	DOB729 Sprint MFC Part List	PARTS	Part List
DR6547PL	DR6547 Sprint MFC Part List	PARTS	Part List
DS43F600PL	DS43F600 Sprint MFC Part List	PARTS	Part List
EAB3866PL	EAB3866 Sprint MFC Part List	PARTS	Part List
EC7336PL	EC7336 Sprint MFC Part List	PARTS	Part List
EE0258PL	EE0258 Sprint MFC Part List	PARTS	Part List
EVJP559PL	EVJP559 Sprint MFC Part List	PARTS	Part List
F9214PL	F9214 Sprint MFC Part List	PARTS	Part List
FB8538PL	FB8538 Sprint MFC Part List	PARTS	Part List
FW8520PL	FW8520 Sprint MFC Part List	PARTS	Part List
GL6547PL	GL6547 Sprint MFC Part List	PARTS	Part List
GH4564PL	GH4564 Sprint MFC Part List	PARTS	Part List
H1475PPL	H1475P Sprint MFC Part List	PARTS	Part List
HV1593PL	HV1593 Sprint MFC Part List	PARTS	Part List
JP9653PL	JP9653 Sprint MFC Part List	PARTS	Part List
JQ7327PL	JQ7327 Sprint MFC Part List	PARTS	Part List

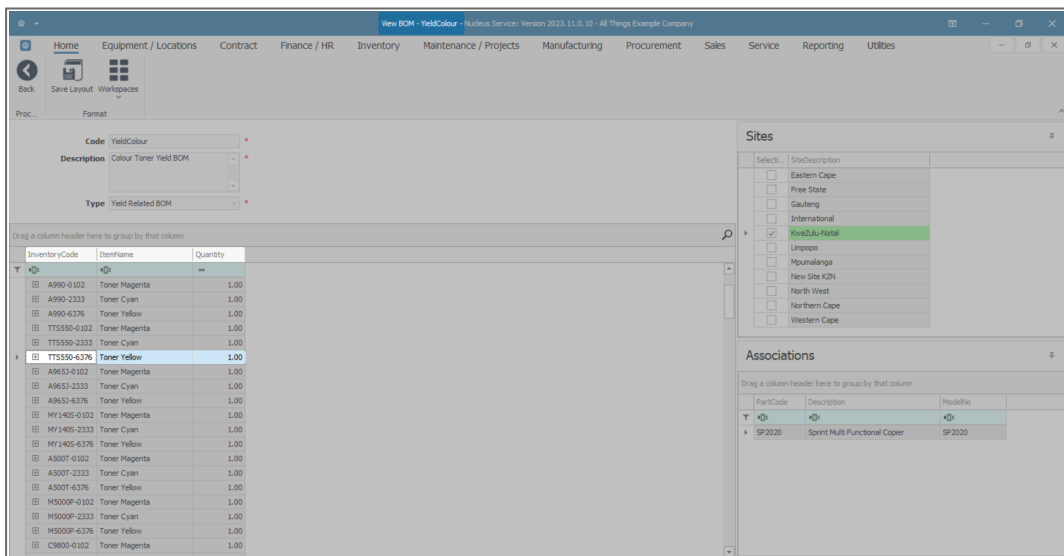
The **View BOM - [ ]** screen will be displayed. Here you can view:

- **Code:** the BOM code.
- **Description:** a brief description of this particular **BOM**, for example, Machine Service, Bin Maintenance or Part List.
- **Type:** the type of **BOM**, for example, Part List or Project Methodology.



## VIEW PARTS AND PART QUANTITIES LINKED TO A BOM

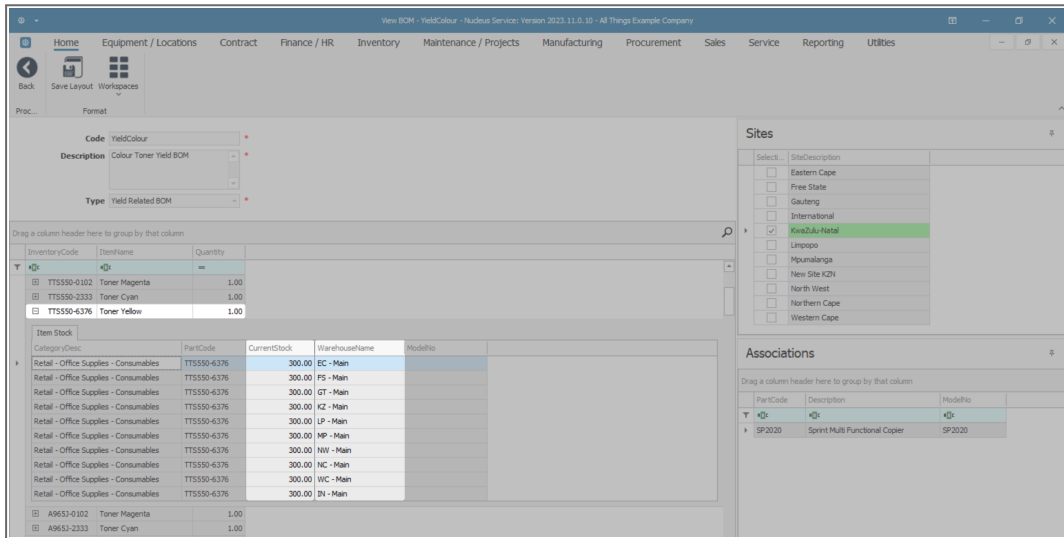
- In this screen you can view a data grid of all the **parts** linked and their **quantities** required for this **BOM**.
- Click on any **expand** button in front of one of the linked parts.



## VIEW AVAILABILITY AND LOCATION OF PARTS LINKED TO A BOM

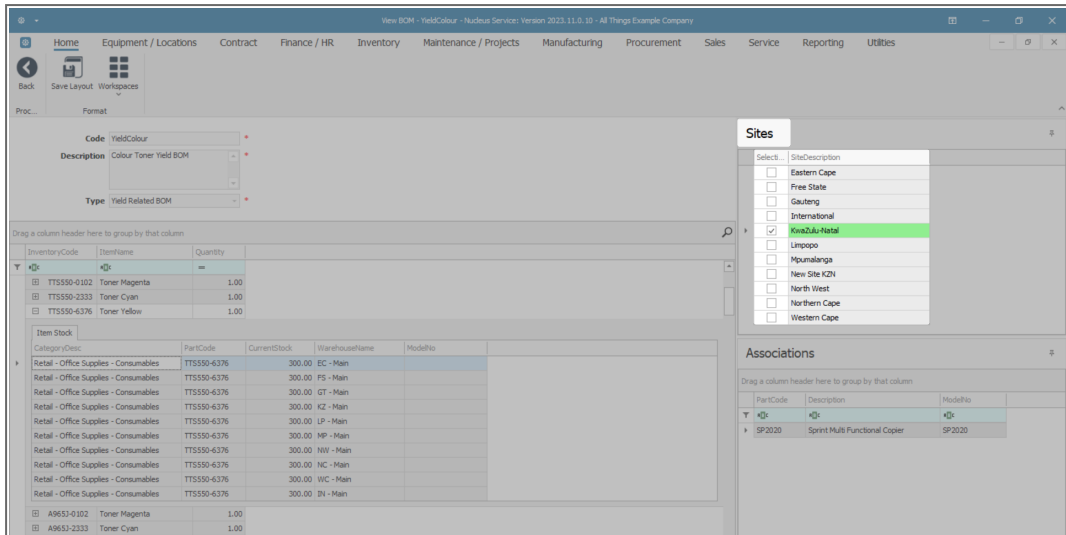
The **Item Stock** data grid for the selected part will be expanded.

- Here you can view **how much** stock of this part is available (Current Stock).
- **Where** this stock is available (Warehouse Name).



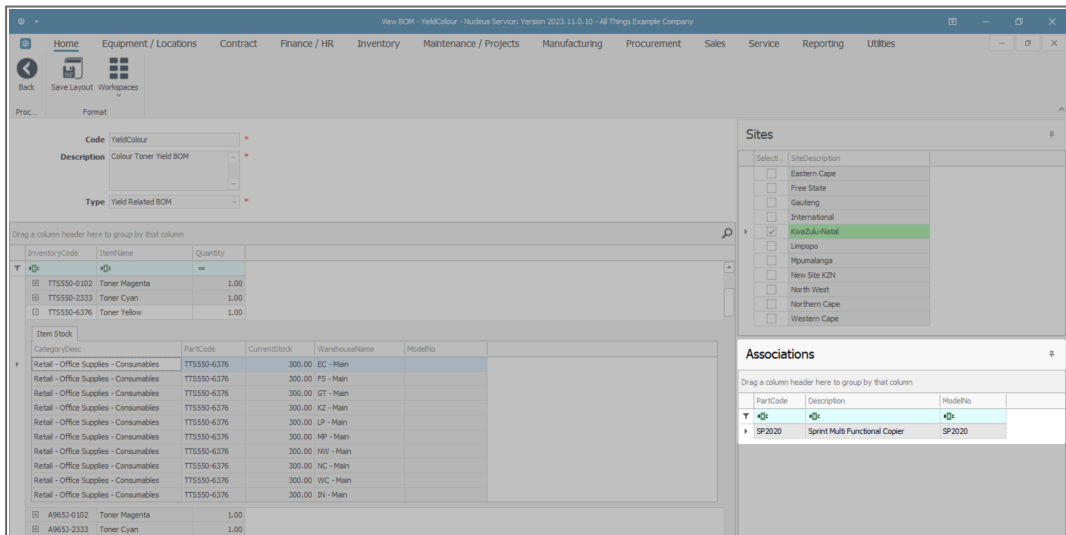
## VIEW SITES LINKED TO A BOM

- On the right-hand side of the screen is the **Sites** docking panel.
- This panel lists all the **sites** on the system that can be linked to this **BOM**.
- The **Select** column contains check boxes which indicate which sites have been linked.



## VIEW ASSETS LINKED TO A BOM

- On the right-hand side of the screen, the **Associations** docking panel lists the **assets** (machines/equipment items) that are linked to the **BOM**.
- Here you can view the:
  - **Part Code**,
  - **Description** and
  - **Model No.** of the associated part.



### Related Topics

- [Creating a new Bill of Materials](#)
- [Parent-Child BOM: Linking a BOM to a Part Definition](#)
- [Inclusions BOM: Linking a BOM to a Contract](#)
- [Tasks BOM: Linking a BOM to a Task](#)
- [Add a New Part to a BOM](#)
- [Request a Part from a BOM](#)

BPO.MNU.025

