

We are currently updating our site; thank you for your patience.

## UTILITIES

### QUIT APPLICATION (LOG OUT OF NUCLEUS SERVICE)

There are **2** methods to log out of **Nucleus Service**.

Either select the **Quit Application** button or **close** the screen.

---

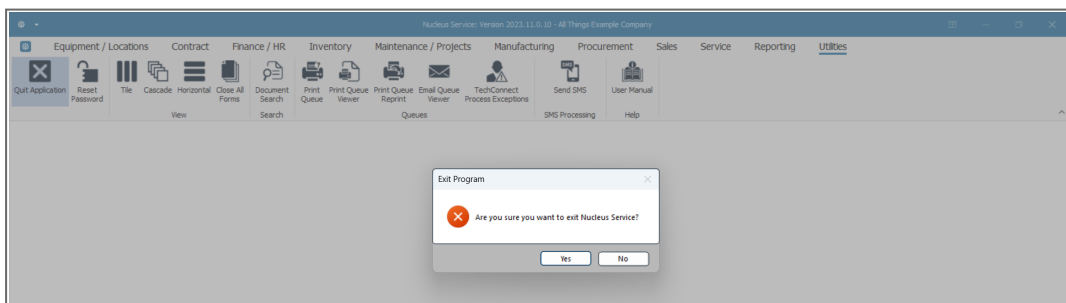
**Ribbon Access: Utilities > Quit Application**

---

## QUIT APPLICATION



- The **Exit Program** message box will appear, asking -
  - **Are you sure you want to exit Nucleus Service?**
- Click on **Yes**.



- The **Nucleus Service** application will close.

## CLOSE THE SCREEN

- Alternatively, at any point whilst in Nucleus Service, you can click on the main **Close Screen**, icon [x], in the top right of the screen.
  - **Note:** Be sure you have **saved** any changes you wish to keep, before closing the application.



MNU.000.007