

INVENTORY

PARTS – ADD PART DEFINITION DETAILS

Part Definition (or Inventory Definition) describes and defines a part.

A **Part Definition** is a way of classifying a part when dealing with inventory.

Keeping good records of parts is critical to inventory management.

When adding a new **Part Definition** to the system, it is important to include as much information as possible about the part to differentiate it from other similar parts.

The **Add new Part** screen details will differ slightly for a **C-Class Part Definition** compared to an **A** or **B-Class Part Definition**.

The differences are set out below.

Ribbon Select **Inventory > Parts**



- The **Part Listing** screen will open.
- The data grid will display a list of all the part definitions currently on the system.
- Click on **Add**.

PartCode	Description	Status	PartType	CatDescription	Weight	Volume	ModelNo	UnitOfMeasure	ShelfLife	SoleSupplier	Taxable	TaxType	Rate	AmendDate
SP2020	Sprint Multi Functional Copier	A	A	Retail - Office Supplies - Equipment	10	10	SP2020	ea	10.00	No	Yes	VAT	15.00	Sep 15 2023 4:00PM
SP2020-1992	Paper Tray	A	B	Retail - Office Supplies - Accessories	2	2		ea	10.00	No	Yes	VAT	15.00	Jan 1 1900 12:00AM
SP2020-3671	Staple Unit	A	B	Retail - Office Supplies - Accessories	2	2		ea	10.00	No	Yes	VAT	15.00	Jan 1 1900 12:00AM
SP2020-7223	Fuser Unit	A	B	Retail - Office Supplies - Accessories	2	2		ea	5.00	No	Yes	VAT	15.00	Jan 1 1900 12:00AM
SP2020-6143	High Yield Reset Lever Gear	A	C	Retail - Office Supplies - Spares	1	1		ea	2.00	No	Yes	VAT	15.00	Jan 1 1900 12:00AM
SP2020-8649	Fuser Heat Roller	A	C	Retail - Office Supplies - Spares	1	1		ea	2.00	No	Yes	VAT	15.00	Jan 1 1900 12:00AM
SP2020-5304	Fuser Roller Gear	A	C	Retail - Office Supplies - Spares	1	1		ea	2.00	No	Yes	VAT	15.00	Jan 1 1900 12:00AM
SP2020-4933	Paper Pickup Roller	A	C	Retail - Office Supplies - Spares	1	1		ea	2.00	No	Yes	VAT	15.00	Jan 1 1900 12:00AM
SP2020-5084	Picker Finger	A	C	Retail - Office Supplies - Spares	1	1		ea	2.00	No	Yes	VAT	15.00	Jan 1 1900 12:00AM
SP2020-5598	Wiper Blade	A	C	Retail - Office Supplies - Spares	1	1		ea	2.00	No	Yes	VAT	15.00	Jan 1 1900 12:00AM
SP2020-2352	Mag Roller	A	C	Retail - Office Supplies - Spares	1	1		ea	2.00	No	Yes	VAT	15.00	Jan 1 1900 12:00AM
SP2020-7335	Mag Roller Sleeve	A	C	Retail - Office Supplies - Spares	1	1		ea	2.00	No	Yes	VAT	15.00	Jan 1 1900 12:00AM
SP2020-5526	Fuser Film	A	C	Retail - Office Supplies - Spares	1	1		ea	2.00	No	Yes	VAT	15.00	Jan 1 1900 12:00AM
SP2020-6028	Fusing Film Assembly Unit	A	C	Retail - Office Supplies - Spares	2	2		ea	2.00	No	Yes	VAT	15.00	Jan 1 1900 12:00AM
SP2020-7652	Maintenance Kit	A	C	Retail - Office Supplies - Spares	1	1		ea	2.00	No	Yes	VAT	15.00	Jan 1 1900 12:00AM
SP2020-3295	Fuser Cleaning Web	A	C	Retail - Office Supplies - Spares	1	1		ea	2.00	No	Yes	VAT	15.00	Jan 1 1900 12:00AM
SP2020-3671	Toner Black	A	C	Retail - Office Supplies - Consumables	1	1		ea	1.00	No	Yes	VAT	15.00	Sep 26 2023 1:44PM
SP2020-1102	Toner Magenta	A	C	Retail - Office Supplies - Consumables	1	1		ea	1.00	No	Yes	VAT	15.00	Jan 1 1900 12:00AM
SP2020-2333	Toner Cyan	A	C	Retail - Office Supplies - Consumables	1	1		ea	1.00	No	Yes	VAT	15.00	Jan 1 1900 12:00AM
SP2020-6376	Toner Yellow	A	C	Retail - Office Supplies - Consumables	1	1		ea	1.00	No	Yes	VAT	15.00	Jan 1 1900 12:00AM
SP500	Sprint Multi Functional Copier	A	A	Retail - Office Supplies - Equipment	10	10	SP500	ea	10.00	No	Yes	VAT	15.00	Jan 1 1900 12:00AM
SP500-1992	Paper Tray	A	B	Retail - Office Supplies - Accessories	2	2		ea	10.00	No	Yes	VAT	15.00	Jan 1 1900 12:00AM
SP500-3671	Staple Unit	A	B	Retail - Office Supplies - Accessories	2	2		ea	10.00	No	Yes	VAT	15.00	Jan 1 1900 12:00AM
SP500-7223	Fuser Unit	A	B	Retail - Office Supplies - Accessories	2	2		ea	5.00	No	Yes	VAT	15.00	Jan 1 1900 12:00AM
SP500-6143	High Yield Reset Lever Gear	A	C	Retail - Office Supplies - Spares	1	1		ea	2.00	No	Yes	VAT	15.00	Jan 1 1900 12:00AM
SP500-8649	Fuser Heat Roller	A	C	Retail - Office Supplies - Spares	1	1		ea	2.00	No	Yes	VAT	15.00	Jan 1 1900 12:00AM

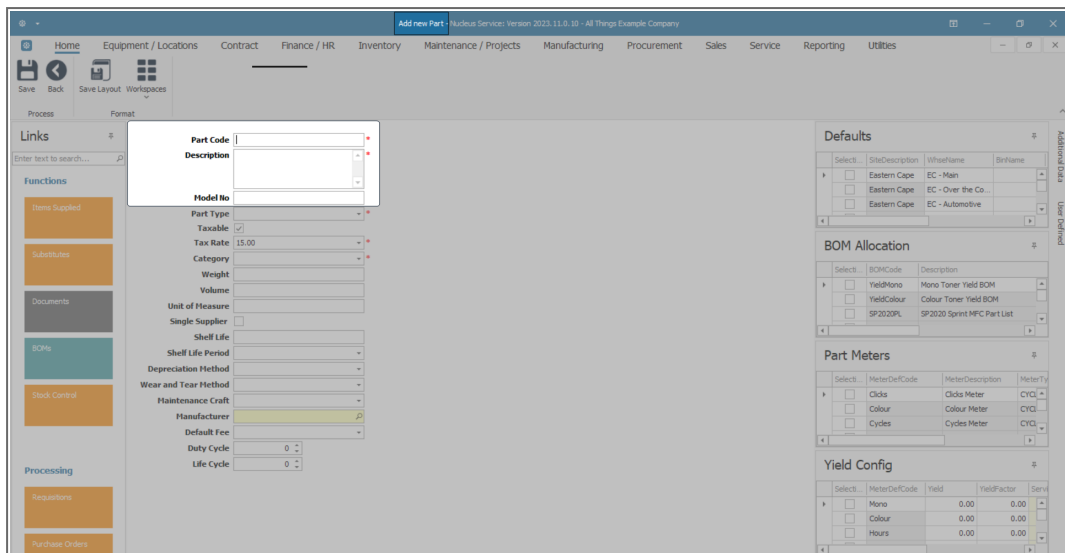
- The **Add new Part** screen will be displayed.
- The part definition **details** section is on the left-hand side of the screen.

ADD A-CLASS PART DEFINITION DETAILS

In this example, an **A-Class** part definition will be added to the system.

Select the check box, **type in** or use the **drop-down arrow** to add the required information to the following fields:

- **Part Code:** Type in the unique **A-Class** part definition number.
- **Description:** Type in a text description for this **A-Class** part definition.
- **Model No:** Type in a valid supplier model number for this **A-Class** part definition, if applicable.

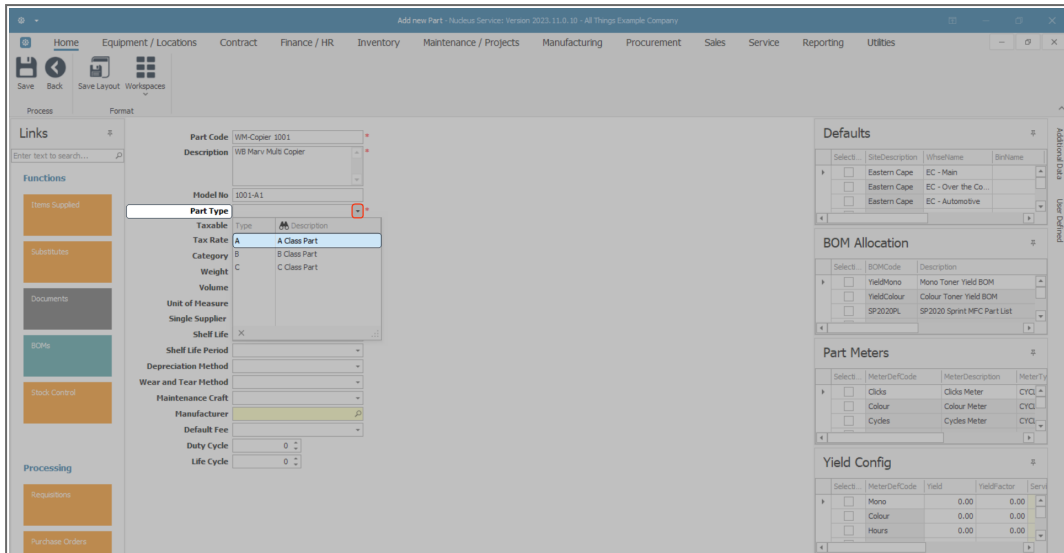


- **Part Type:** Click on the drop-down arrow to display the part definition **Type** menu:
 - **A - Serialised Equipment**¹
 - **B - Serialised Spares**²
 - **C - Non-Serialised Parts**³
- In this example, **Type A** will be selected as an **A-Class** part is being added.

¹Serialised or A-Class refers to a uniquely identified inventory item. Generally sold at a higher price than B and C-Class items.

²These are serialised single-line items. These are like C-Class items, in that a B-Class stock item can be issued out and not billed. However, they are generally more expensive than C-Class parts. These items would not be a main unit or machine but an accessory, e.g., a drum for a copier machine.

³These are (non-serialised) stock items. These are stored in the system with a weighted average unit cost per warehouse and bin. These items can be managed in batches if batch tracking is enabled.

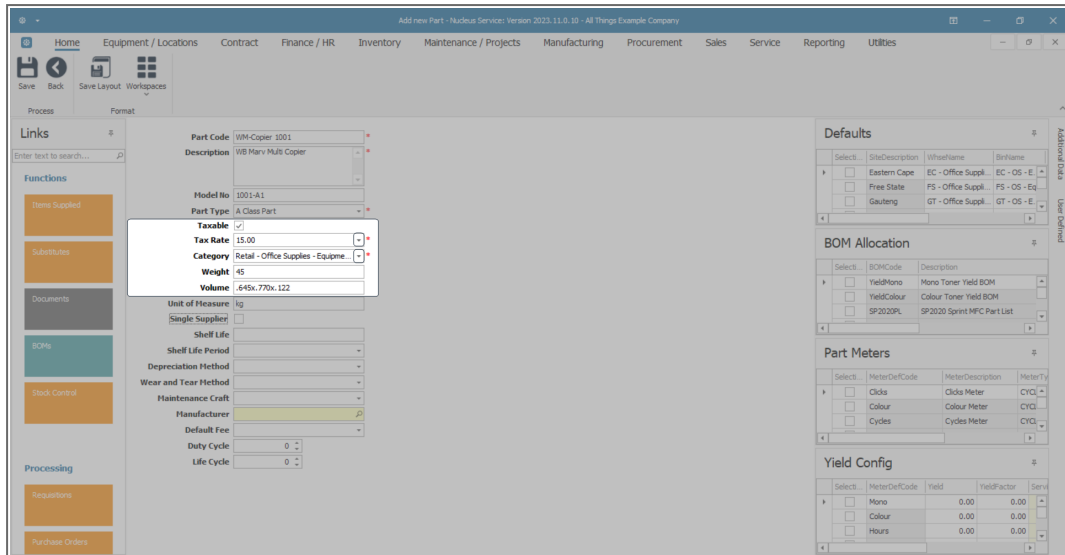


- **Taxable:** Select this check box if this part is taxable.
- **Tax Rate:** Click on the drop-down arrow and select from the list, the tax code applicable to this part. These [tax rates](#) are set up in the Configurator.
- **Category:** Click on the drop-down arrow and select from the list, the [category](#) applicable to this part.

Note: The Category selected here will affect the Sites and Warehouses that are available for selection in the Defaults panel. See [Add](#) and [Edit](#) a Category for more information.

- **Weight:** Type in the weight of the part, if required.
- **Volume:** Type in the **volume**¹ of the part, if required.
- **Unit of Measure:** Type in the unit used to measure the part, for example: kilograms, pounds.

¹This is the amount of space that this item occupies. This three dimensional space is measured in length, height and width.



- **Single Supplier:** Select this check box if the part is procured from only one supplier.
- **Shelf Life:** Type in the shelf life or life expectancy of this part.
- **Shelf Life Period:** Click on the drop-down arrow and select from the list, the unit of time applicable to the shelf life period, for example, months, years.

- **Depreciation Method:** Click on the drop-down arrow and select from the list, a **depreciation**¹ method, e.g. 3 or 5 Year **Straight Line**².

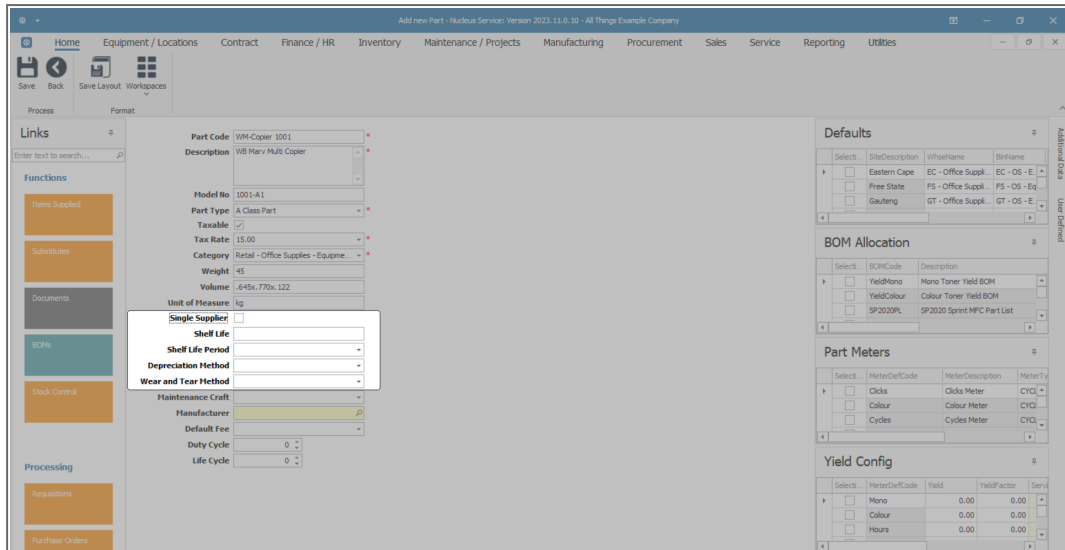
Note: You will only be able to add a depreciation method here if this is a serialised equipment item (Class-A), or a serialised spares item (Class-B). Otherwise the field will be greyed out (**inactive**).

- **Wear and Tear Method:** Click on the drop-down arrow and select a **wear and tear method**³ from the list, e.g. 3 or 5 year straight line.

¹Depreciation refers to the decline in the value of this item due to its usage, passage of time or obsolescence.

²This is the most commonly used method to calculate depreciation. It is also known as fixed instalment method. Under this method, an equal amount is charged for depreciation of every fixed asset in each of the accounting periods. This uniform amount is charged until the asset gets reduced to nil or its salvage value at the end of its estimated useful life. This method derives its name from a straight line graph. This graph is deduced after plotting an equal amount of depreciation for each accounting period over the useful life of the asset. Thus, the amount of depreciation is calculated by simply dividing the difference of original cost or book value of the fixed asset and the salvage value by useful life of the asset. The formula for annual depreciation under straight line method is: $\text{Annual Depreciation Expense} = (\text{Cost of an asset} - \text{Salvage Value}) / \text{Useful life of an asset}$

³Wear and tear tracks the total asset life from its first conversion from stock to asset as it would be determined by Inland Revenue. If an internal asset is converted back to stock, the wear and tear will pause until such time as the item becomes an asset again and will catch up any wear and tear not calculated while the item was deemed to be stock.

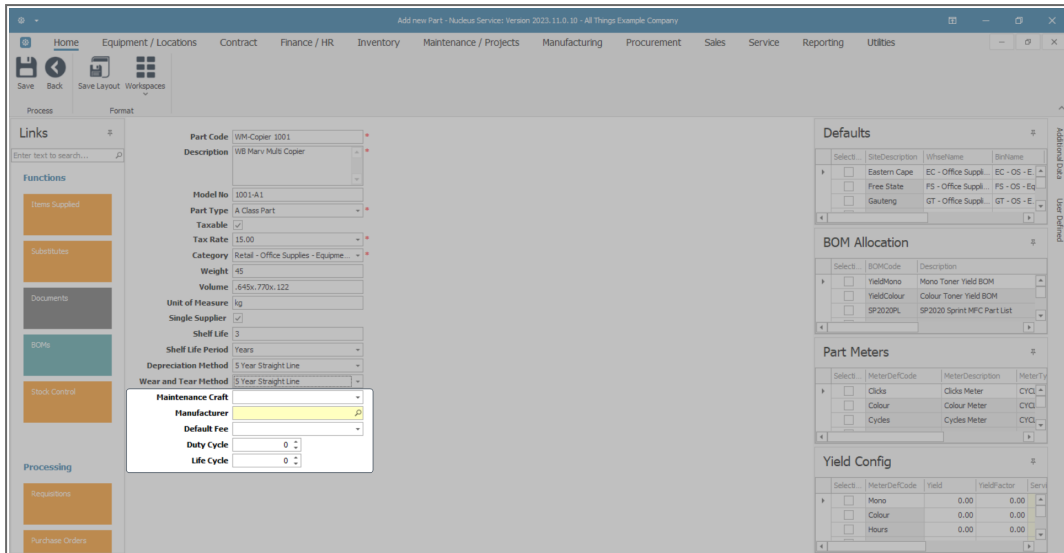


- **Maintenance Craft:** Click on the drop-down arrow and select from the list, the default **craft**¹ (skill) utilised when maintaining this part.
- **Manufacturer:** Click on the search button and select the **manufacturer**² of this part.
- **Default Fee:** Click on the drop-down arrow and select from the list, the **default fee**³ associated with this part, if applicable.
- **Duty Cycle:** The cycle of operation of an item that operates intermittently rather than continuously. This is generally expressed as a percentage.
- **Life Cycle:** The full lifespan of the item, generally from commission through acquisition, operation and maintenance to decommission.

¹A craft is the skill set or qualification(s) linked to an employee.

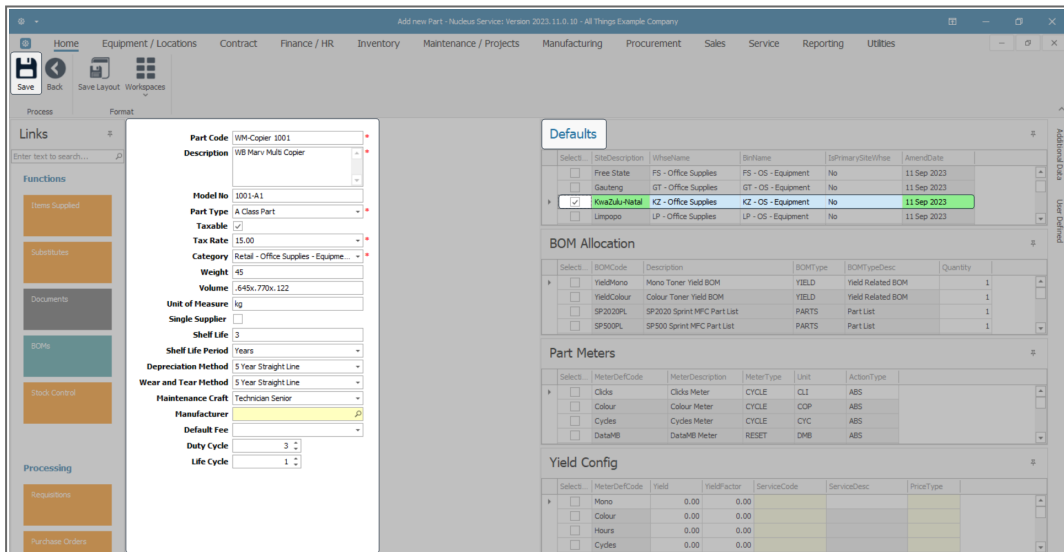
²A manufacturer is a company that produces goods in large numbers often by converting raw materials into finished products.

³For an A-class part, you can use this field to note what the default fee is for a specific type of item at part level, instead of at contract level.



- Once you have filled in the mandatory details and the optional details, as required, you can follow the process to [Add the Part Definition Defaults](#).

Note: A part definition must have at least one site selected in the Defaults panel. If none are linked, you will not be able to Save the part definition details.



C-CLASS NON-SERIALISED PARTS

The process to add **C-Class¹ Non-Serialised** part definitions differs in the following way:

- The **Depreciation Method** field will automatically grey out (become inactive). Depreciation does not apply to **C--Class** parts.
- The **Part Meters** panel will automatically grey out (become inactive). **C-Class** parts do not have meters linked to them.

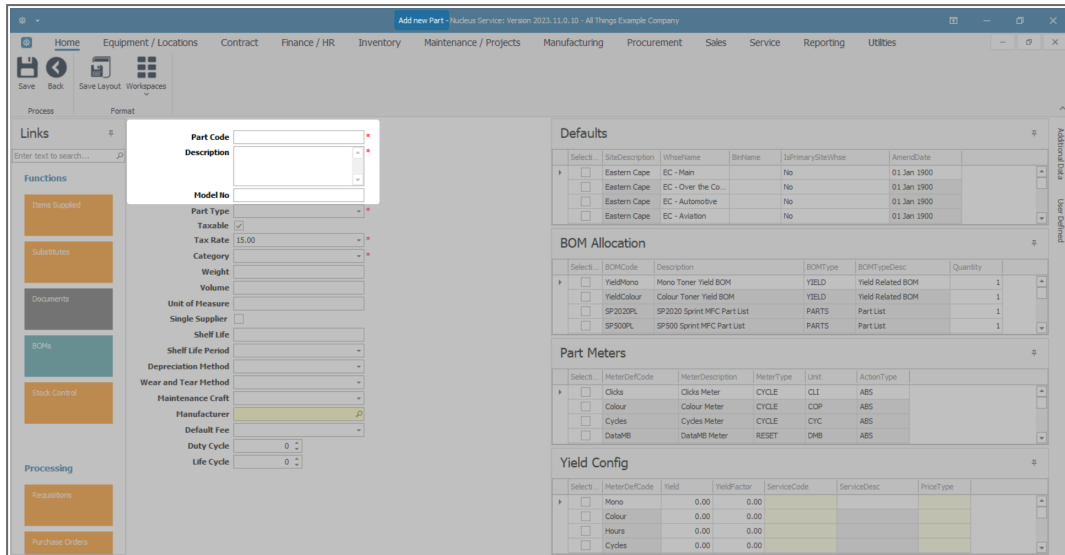
ADD C-CLASS NON-SERIALISED PART DEFINITION DETAILS

Navigate to the **Add new Part** screen.

Select the check box, **type in** or use the **drop-down arrow** to add the required information to the following fields:

- **Part Code:** Type in the **C-Class** part definition number.
- **Description:** Type in a text description for this **C-Class** part definition.
- **Model No:** Type in a valid supplier model number for this **C-Class** part definition, if applicable.

¹These are low cost, non-serialised items that can be received in batches.



- **Part Type:** Click on the drop-down arrow to display the part definition **Type** menu:
 - **A - Serialised Equipment**¹
 - **B - Serialised Spares**²
 - **C - Non Serialised Parts**³
- In this example, **Part Type C** will be selected as a **C-Class** part is being added.

¹Serialised or A-Class refers to a uniquely identified inventory item. Generally sold at a higher price than B and C-Class items.

²These are serialised single-line items. These are like C-Class items, in that a B-Class stock item can be issued out and not billed. However, they are generally more expensive than C-Class parts. These items would not be a main unit/machine but an accessory e.g. a drum for a copier machine.

³These are (non-serialised) stock items. These are stored in the system with a weighted average unit cost per warehouse and bin. These items can be managed in batches if batch tracking is enabled.

The screenshot shows the 'Add Part' form with the following details:

- Part Code:** Toner001
- Description:** Back Toner
- Model No:** (empty)
- Part Type:** C Class Part
- Category:** C Class Part
- Unit of Measure:** (empty)
- Single Supplier:** (empty)
- Shell Life:** X
- Depreciation Method:** (greyed out)
- Part Meters:** (greyed out)

- Note that, after the **C-Class Part Type** is selected, the **Depreciation Method** field and **Part Meters** panel greys out, and becomes **inactive**.
- Only a serialised equipment item, **A-Class**, or a serialised spares item, **B-Class**, can have depreciation applied.

The screenshot shows the 'Add Part' form with the following details:

- Part Code:** Toner001
- Description:** Back Toner
- Model No:** (empty)
- Part Type:** C Class Part
- Category:** C Class Part
- Taxable:**
- Tax Rate:** 15.00
- Unit of Measure:** (empty)
- Single Supplier:** (empty)
- Shell Life:** (empty)
- Depreciation Method:** (active)
- Part Meters:** (active)

- **Taxable:** Select this check box if this part is taxable.

- **Tax Rate:** Click on the drop-down arrow and select from the list, the tax code applicable to this part. These [tax rates](#) are set up in the Configurator.
- **Category:** Click on the drop-down arrow and select from the list, the [category](#) applicable to this part.

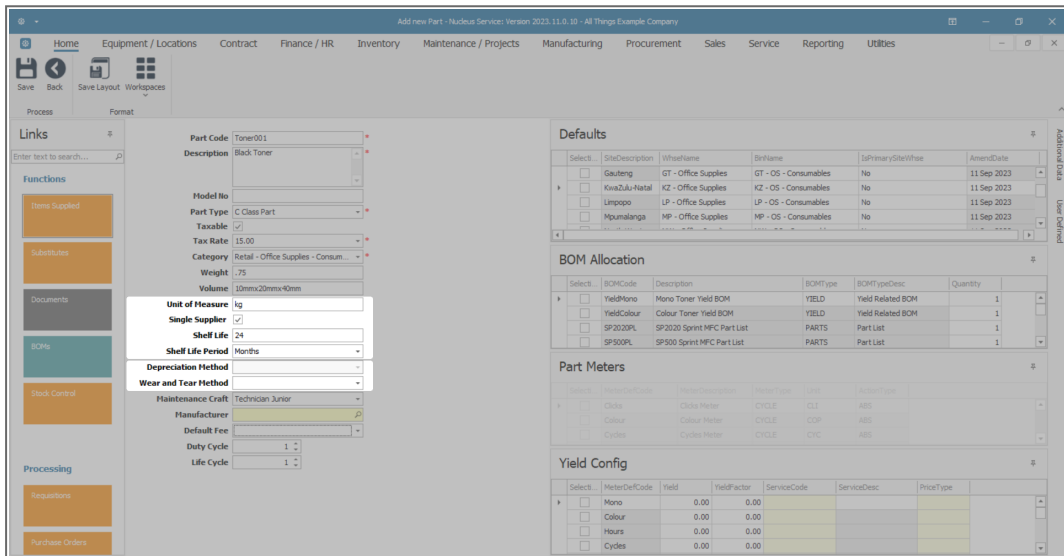
Note: The category selected here will affect the Sites and Warehouses that are available for selection in the Defaults panel. See [Add](#) and [Edit](#) a category for more information.

- **Weight:** Type in the weight of the part, if required.
- **Volume:** Type in the [volume](#)¹ of the part, if required.
- **Unit of Measure:** Type in the unit used to measure the part, e.g. kg.

- **Single Supplier:** Select this check box if the part is procured from only one supplier.
- **Shelf Life:** Type in the shelf life or life expectancy of this part.

¹This is the amount of space that this item occupies. This three dimensional space is measured in length, height and width.

- **Shelf Life Period:** Click on the drop-down arrow and select from the list, the unit of time applicable to the shelf life period e.g. months, years.
- **Depreciation Method:** This field will be greyed out (inactive) for a **C-Class** part.
- **Wear and Tear Method¹:** As wear and tear methods are linked to asset depreciation, this field will not be applicable to **C-Class** part definitions.

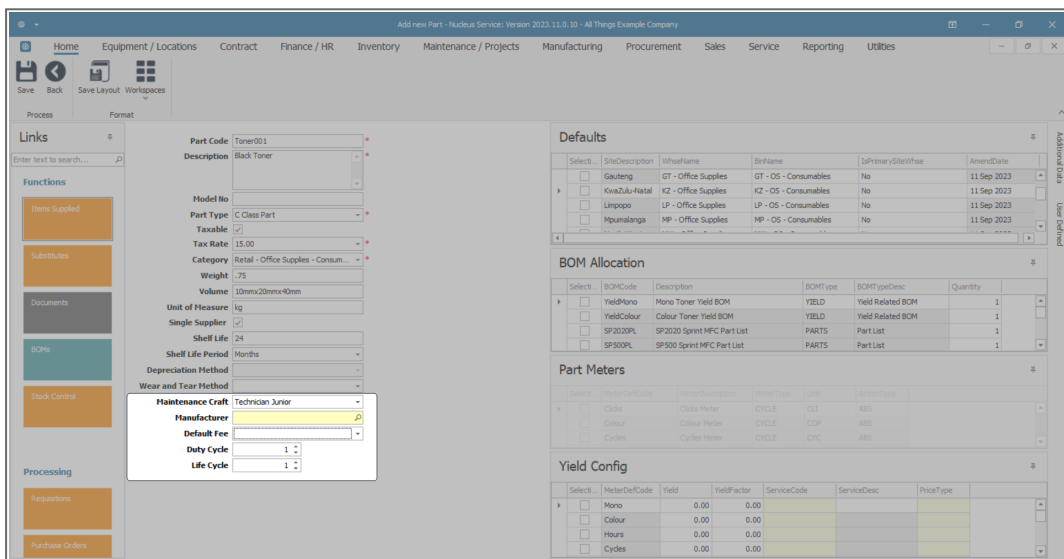


- **Maintenance Craft:** Click on the drop-down arrow and select from the list, the default **craft²** (skill) utilised when maintaining this part.
- **Manufacturer:** Click on the search button and select the manufacturer of this part.

¹Wear and tear tracks the total asset life from it's first conversion from stock to asset as it would be determined by Inland Revenue. If an internal asset is converted back to stock, the wear and tear will pause until such time as the item becomes an asset again and will catch up any wear and tear not calculated while the item was deemed to be stock.

²A craft is the skill set or qualification(s) linked to an employee.

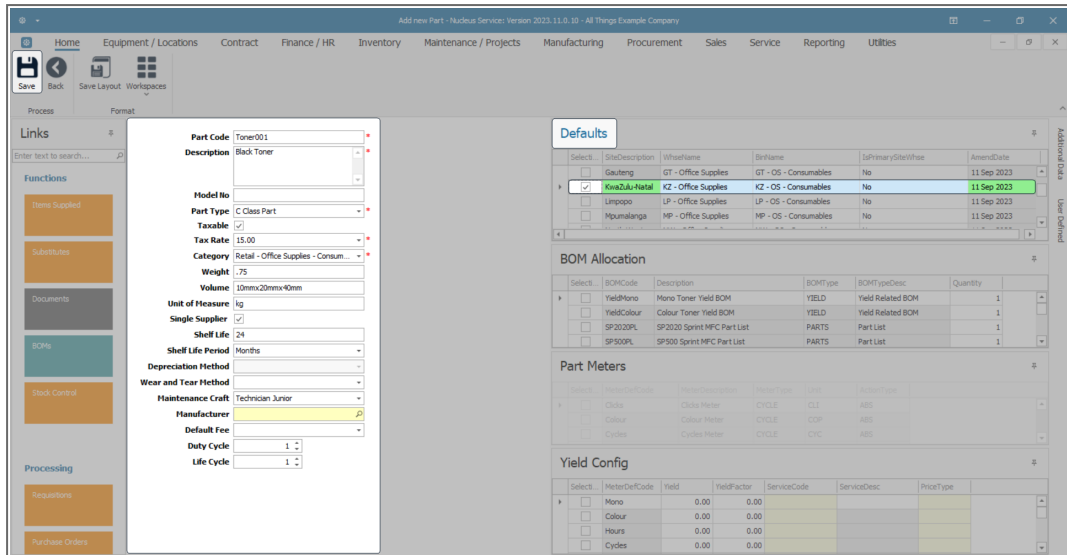
- **Default Fee:** Click on the drop-down arrow and select from the list, the default fee associated with this part, if applicable.
- **Duty Cycle:** Click on the arrows to choose the operational cycle or usage pattern of this part. For non-serialised **C--Class** parts, the duty cycle represents how frequently they are used or replaced within a given time frame.
- **Life Cycle:** Click on the arrows to choose the life cycle of this part. Non-serialised **C--Class** parts follow a simple life cycle - procurement, storage, usage and replenishment.



Once you have filled in the mandatory details and the optional details, as required -

Follow the process to [Add the Part Definition Defaults](#).

Note: A part definition must have at least one Site and Warehouse selected in the Defaults panel. If none are linked, you will not be able to Save the part definition details.



Related Topics

- [Add Part Definition Defaults](#)
- [Add Part Definition BOM Allocation](#)
- [Add Part Definition Part Meters](#)
- [Add Part Definition Yield Config](#)
- [Add Part Definition Additional Data](#)
- [Add Part Definition User Defined](#)

MNU.026.030

