

INVENTORY

PARTS - ADD PART DEFINITION BOM ALLOCATION

Allocating a **BOM** to a part definition involves linking a comprehensive list of all that is required to create, install or service the part.

Once the part definition [Details](#) and [Defaults](#) have been added, you can add information to the **BOM Allocation** panel.

Ribbon Select Inventory > Parts

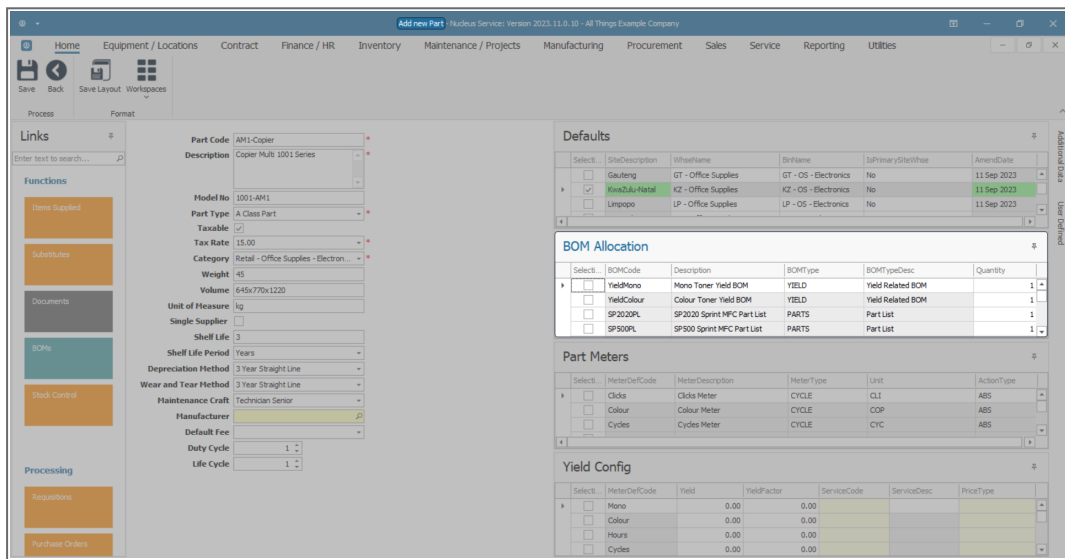


- The **Part Listing** screen will be displayed.
- The data grid will display a list of all the part definitions currently on the system.
- Click on **Add**.

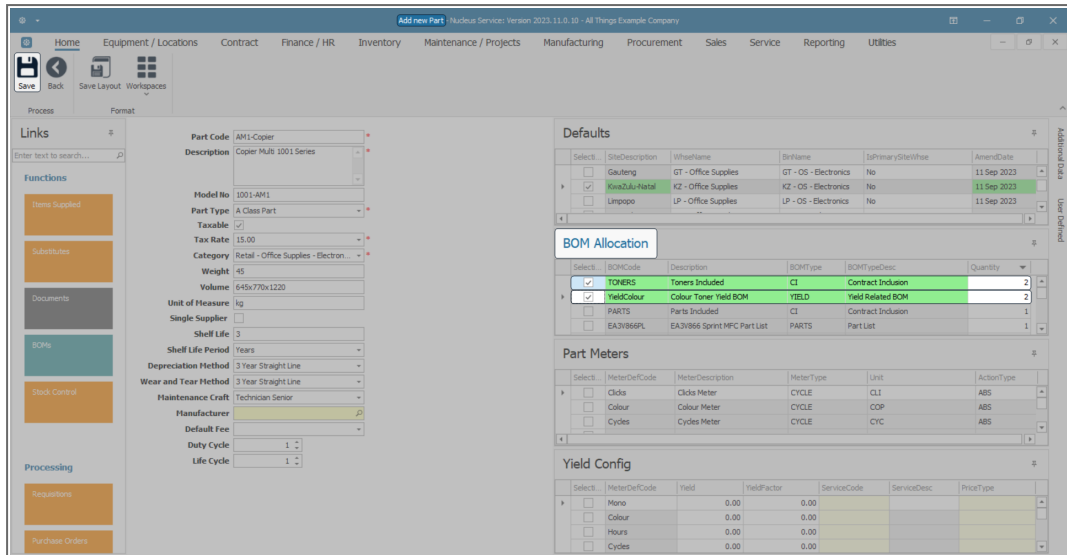
PartCode	Description	Status	PartType	CatDescription	Weight	Volume	ModelNo	UnitOfMeasure	ShelfLife	SoldSupplier	Taxable	TaxType	Rate	AmendDate
SP2020	Sprint Multi Functional Copier	A	A	Retail - Office Supplies - Equipment	10	10	SP2020	ea	10.00	No	Yes	VAT	15.00	Sep 15 2023 4:00PM
SP2020-1992	Paper Tray	A	B	Retail - Office Supplies - Accessories	2	2		ea	10.00	No	Yes	VAT	15.00	Jan 1 1900 12:00AM
SP2020-3671	Staple Unit	A	B	Retail - Office Supplies - Accessories	2	2		ea	10.00	No	Yes	VAT	15.00	Jan 1 1900 12:00AM
SP2020-7223	Fuser Unit	A	B	Retail - Office Supplies - Accessories	2	2		ea	5.00	No	Yes	VAT	15.00	Jan 1 1900 12:00AM
SP2020-6143	High Yield Reset Lever Gear	A	C	Retail - Office Supplies - Spares	1	1		ea	2.00	No	Yes	VAT	15.00	Jan 1 1900 12:00AM
SP2020-8649	Fuser Heat Roller	A	C	Retail - Office Supplies - Spares	1	1		ea	2.00	No	Yes	VAT	15.00	Jan 1 1900 12:00AM
SP2020-5304	Fuser Roller Gear	A	C	Retail - Office Supplies - Spares	1	1		ea	2.00	No	Yes	VAT	15.00	Jan 1 1900 12:00AM
SP2020-4933	Paper Pickup Roller	A	C	Retail - Office Supplies - Spares	1	1		ea	2.00	No	Yes	VAT	15.00	Jan 1 1900 12:00AM
SP2020-5084	Picker Finger	A	C	Retail - Office Supplies - Spares	1	1		ea	2.00	No	Yes	VAT	15.00	Jan 1 1900 12:00AM
SP2020-5598	Wiper Blade	A	C	Retail - Office Supplies - Spares	1	1		ea	2.00	No	Yes	VAT	15.00	Jan 1 1900 12:00AM
SP2020-2352	Mag Roller	A	C	Retail - Office Supplies - Spares	1	1		ea	2.00	No	Yes	VAT	15.00	Jan 1 1900 12:00AM
SP2020-7335	Mag Roller Sleeve	A	C	Retail - Office Supplies - Spares	1	1		ea	2.00	No	Yes	VAT	15.00	Jan 1 1900 12:00AM
SP2020-5526	Fuser Film	A	C	Retail - Office Supplies - Spares	1	1		ea	2.00	No	Yes	VAT	15.00	Jan 1 1900 12:00AM
SP2020-4638	Fixing Film Assembly Unit	A	C	Retail - Office Supplies - Spares	2	2		ea	2.00	No	Yes	VAT	15.00	Jan 1 1900 12:00AM
SP2020-7652	Maintenance Kit	A	C	Retail - Office Supplies - Spares	1	1		ea	2.00	No	Yes	VAT	15.00	Jan 1 1900 12:00AM
SP2020-3295	Fuser Cleaning Web	A	C	Retail - Office Supplies - Spares	1	1		ea	2.00	No	Yes	VAT	15.00	Jan 1 1900 12:00AM
SP2020-2671	Toner Black	A	C	Retail - Office Supplies - Consumables	1	1		ea	1.00	No	Yes	VAT	15.00	Sep 26 2023 1:44PM
SP2020-1012	Toner Magenta	A	C	Retail - Office Supplies - Consumables	1	1		ea	1.00	No	Yes	VAT	15.00	Jan 1 1900 12:00AM
SP2020-2333	Toner Cyan	A	C	Retail - Office Supplies - Consumables	1	1		ea	1.00	No	Yes	VAT	15.00	Jan 1 1900 12:00AM
SP2020-6376	Toner Yellow	A	C	Retail - Office Supplies - Consumables	1	1		ea	1.00	No	Yes	VAT	15.00	Jan 1 1900 12:00AM
SP500	Sprint Multi Functional Copier	A	A	Retail - Office Supplies - Equipment	10	10	SP500	ea	10.00	No	Yes	VAT	15.00	Jan 1 1900 12:00AM
SP500-1992	Paper Tray	A	B	Retail - Office Supplies - Accessories	2	2		ea	10.00	No	Yes	VAT	15.00	Jan 1 1900 12:00AM
SP500-3671	Staple Unit	A	B	Retail - Office Supplies - Accessories	2	2		ea	10.00	No	Yes	VAT	15.00	Jan 1 1900 12:00AM
SP500-7223	Fuser Unit	A	B	Retail - Office Supplies - Accessories	2	2		ea	5.00	No	Yes	VAT	15.00	Jan 1 1900 12:00AM
SP500-6143	High Yield Reset Lever Gear	A	C	Retail - Office Supplies - Spares	1	1		ea	2.00	No	Yes	VAT	15.00	Jan 1 1900 12:00AM
SP500-8649	Fuser Heat Roller	A	C	Retail - Office Supplies - Spares	1	1		ea	2.00	No	Yes	VAT	15.00	Jan 1 1900 12:00AM

- The **Add new part** screen will open.
- Follow the process to add the part definition [Details](#) and [Defaults](#).
- Move down to the **BOM Allocation** panel.
- This panel will list the available **BOMs** and enables you to link a part definition to a current [Bill Of Materials](#).
- In the **Selection** column select the check boxes in front of the **BOMs** you wish to link this part definition.

Note: A part definition can be linked to more than one BOM.



- In this example, **2 BOMs** have been linked.
- Click in the **Quantity** column of each of the new **BOM Allocations** and either type in or use the directional arrows to enter the requisite quantity.
- When you have linked all the required **BOMs**, click on **Save**.



- The added **BOM Allocations** will be saved and you will return to the **Part Listing** screen.

Related Topics

- [Add Part Definition Details](#)
- [Add Part Definition Defaults](#)
- [Add Part Definition Part Meters](#)
- [Add Part Definition Yield Config](#)
- [Add Part Definition Additional Data](#)
- [Add Part Definition User Defined](#)

MNU.026.032

