

INVENTORY

PARTS – ADD PART DEFINITION PART METERS

A **Part Meter** (or print meter) is a mechanism within the equipment item that tracks the volume of paper used and the type of print made (**mono** or **colour**).

These meters help monitor usage, estimate equipment lifespan, calculate running costs and budget accordingly.

In summary, **Part Meters** provide essential insights for the efficient management of equipment and resources.

Ribbon Select **Inventory > Parts**

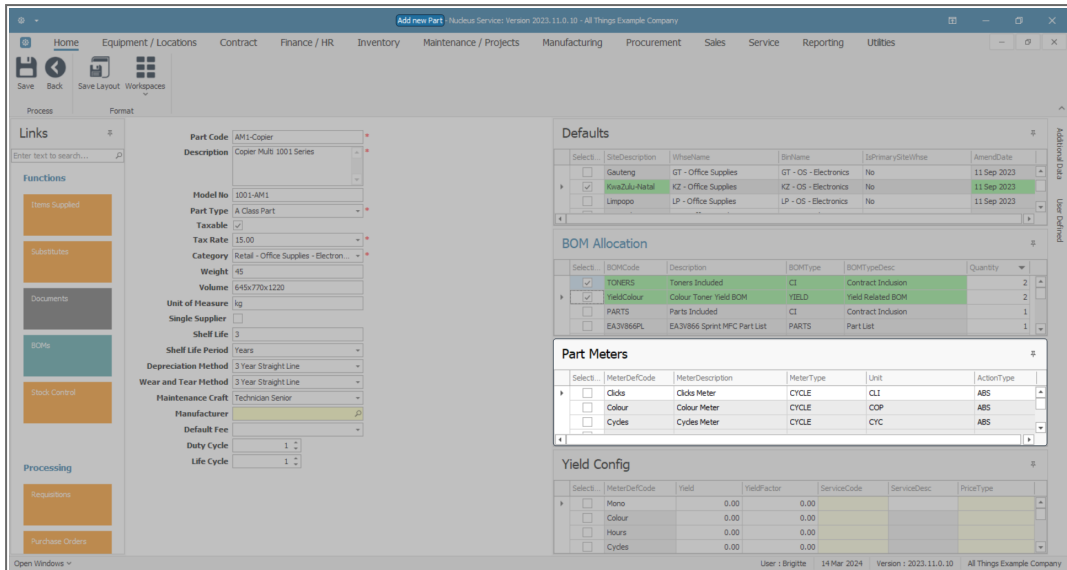


- The **Part Listing** screen will be displayed.
- The data grid will display a list of all the part definitions currently on the system.
- Click on **Add**.

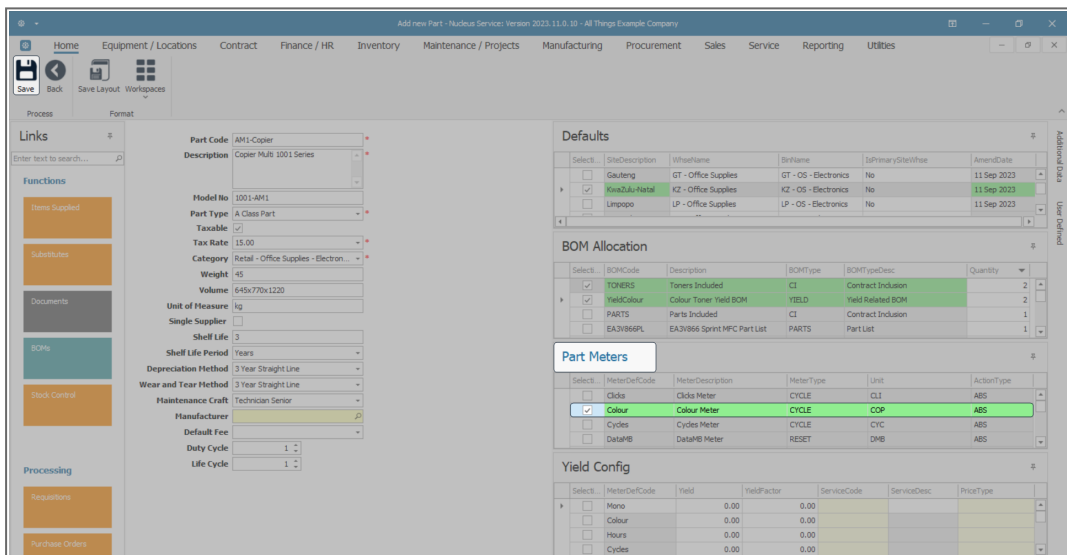
PartCode	Description	Status	PartType	CatDescription	Weight	Volume	ModelNo	UnitOfMeasure	ShelfLife	SoleSupplier	Taxable	TaxType	Rate	AmendDate
SP2020	Sprint Multi Functional Copier	A	A	Retail - Office Supplies - Equipment	10	10	SP2020	ea	10.00	No	Yes	VAT	15.00	Sep 15 2023 4:00PM
SP2020-1992	Paper Tray	A	B	Retail - Office Supplies - Accessories	2	2		ea	10.00	No	Yes	VAT	15.00	Jan 1 1900 12:00AM
SP2020-3671	Staple Unit	A	B	Retail - Office Supplies - Accessories	2	2		ea	10.00	No	Yes	VAT	15.00	Jan 1 1900 12:00AM
SP2020-7223	Fuser Unit	A	B	Retail - Office Supplies - Accessories	2	2		ea	5.00	No	Yes	VAT	15.00	Jan 1 1900 12:00AM
SP2020-6143	High Yield Reset Lever Gear	A	C	Retail - Office Supplies - Spares	1	1		ea	2.00	No	Yes	VAT	15.00	Jan 1 1900 12:00AM
SP2020-8649	Fuser Heat Roller	A	C	Retail - Office Supplies - Spares	1	1		ea	2.00	No	Yes	VAT	15.00	Jan 1 1900 12:00AM
SP2020-5304	Fuser Roller Gear	A	C	Retail - Office Supplies - Spares	1	1		ea	2.00	No	Yes	VAT	15.00	Jan 1 1900 12:00AM
SP2020-4933	Paper Pickup Roller	A	C	Retail - Office Supplies - Spares	1	1		ea	2.00	No	Yes	VAT	15.00	Jan 1 1900 12:00AM
SP2020-5084	Picker Finger	A	C	Retail - Office Supplies - Spares	1	1		ea	2.00	No	Yes	VAT	15.00	Jan 1 1900 12:00AM
SP2020-5598	Wiper Blade	A	C	Retail - Office Supplies - Spares	1	1		ea	2.00	No	Yes	VAT	15.00	Jan 1 1900 12:00AM
SP2020-2352	Mag Roller	A	C	Retail - Office Supplies - Spares	1	1		ea	2.00	No	Yes	VAT	15.00	Jan 1 1900 12:00AM
SP2020-7335	Mag Roller Sleeve	A	C	Retail - Office Supplies - Spares	1	1		ea	2.00	No	Yes	VAT	15.00	Jan 1 1900 12:00AM
SP2020-5526	Fuser Film	A	C	Retail - Office Supplies - Spares	1	1		ea	2.00	No	Yes	VAT	15.00	Jan 1 1900 12:00AM
SP2020-6028	Fusing Film Assembly Unit	A	C	Retail - Office Supplies - Spares	2	2		ea	2.00	No	Yes	VAT	15.00	Jan 1 1900 12:00AM
SP2020-7652	Maintenance Kit	A	C	Retail - Office Supplies - Spares	1	1		ea	2.00	No	Yes	VAT	15.00	Jan 1 1900 12:00AM
SP2020-3295	Fuser Cleaning Web	A	C	Retail - Office Supplies - Spares	1	1		ea	2.00	No	Yes	VAT	15.00	Jan 1 1900 12:00AM
SP2020-2671	Toner Black	A	C	Retail - Office Supplies - Consumables	1	1		ea	1.00	No	Yes	VAT	15.00	Sep 26 2023 1:44PM
SP2020-1102	Toner Magenta	A	C	Retail - Office Supplies - Consumables	1	1		ea	1.00	No	Yes	VAT	15.00	Jan 1 1900 12:00AM
SP2020-2333	Toner Cyan	A	C	Retail - Office Supplies - Consumables	1	1		ea	1.00	No	Yes	VAT	15.00	Jan 1 1900 12:00AM
SP2020-6376	Toner Yellow	A	C	Retail - Office Supplies - Consumables	1	1		ea	1.00	No	Yes	VAT	15.00	Jan 1 1900 12:00AM
SP500	Sprint Multi Functional Copier	A	A	Retail - Office Supplies - Equipment	10	10	SP500	ea	10.00	No	Yes	VAT	15.00	Jan 1 1900 12:00AM
SP500-1992	Paper Tray	A	B	Retail - Office Supplies - Accessories	2	2		ea	10.00	No	Yes	VAT	15.00	Jan 1 1900 12:00AM
SP500-3671	Staple Unit	A	B	Retail - Office Supplies - Accessories	2	2		ea	10.00	No	Yes	VAT	15.00	Jan 1 1900 12:00AM
SP500-7223	Fuser Unit	A	B	Retail - Office Supplies - Accessories	2	2		ea	5.00	No	Yes	VAT	15.00	Jan 1 1900 12:00AM
SP500-6143	High Yield Reset Lever Gear	A	C	Retail - Office Supplies - Spares	1	1		ea	2.00	No	Yes	VAT	15.00	Jan 1 1900 12:00AM
SP500-8649	Fuser Heat Roller	A	C	Retail - Office Supplies - Spares	1	1		ea	2.00	No	Yes	VAT	15.00	Jan 1 1900 12:00AM

- The **Add new part** screen will open.
- Follow the process to add the part definition [Details](#) and [Defaults](#).
- Follow the process to [Add a part definition BOM Allocation](#), if required.
- Move further down the right hand side of the Add new Part screen to the **Part Meters** panel.
- This panel will list all the available meters.
- In the **Selection** column select the check boxes in front of the meter you wish to link this part definition.

Note: You will only be able to link a meter to an A or B-Class part definition. C-Class parts do not have meters linked to them.



- In this example, a **Colour** meter has been linked.
- When you have finished your selection, click on **Save**.



- The added part meter will be saved and you will return to the **Part Listing** screen.
- The part definition **row** will be auto-selected in the data grid.

Part Listing - Nucelus Service: Version 2023.11.0 - 10 - All Things Example Company

Home Equipment / Locations Contract Finance / HR Inventory Maintenance / Projects Manufacturing Procurement Sales Service Reporting Utilities

Processing Format Current Print Reports

Links

Enter text to search...

Drag a column header here to group by that column

PartCode	Description	Status	PartType	CaDescription	Weight	Volume	ModelNo	UnitOfMeasure	ShelfLife	SoleSupplier	Taxable	TaxType	Rate	CraftCode	CraftDesc
AV990-5526	Fuser Film	A	C	Retail - Office Supplies - Spares	1	1		ea	2.00	No	Yes	VAT	15.00		
AV990-5598	Wiper Blade	A	C	Retail - Office Supplies - Spares	1	1		ea	2.00	No	Yes	VAT	15.00		
AV990-6028	Fixing Film Assembly Unit	A	C	Retail - Office Supplies - Spares	2	2		ea	2.00	No	Yes	VAT	15.00		
AV990-6143	High Yield Reset Lever Gear	A	C	Retail - Office Supplies - Spares	1	1		ea	2.00	No	Yes	VAT	15.00		
AV990-6376	Toner Yellow	A	C	Retail - Office Supplies - Consumables	1	1		ea	1.00	No	Yes	VAT	15.00		
AV990-7223	Fuser Unit	A	B	Retail - Office Supplies - Accessories	2	2		ea	5.00	No	Yes	VAT	15.00		
AV990-7235	Mag Roller Sleeve	A	C	Retail - Office Supplies - Spares	1	1		ea	2.00	No	Yes	VAT	15.00		
AV990-7652	Maintenance Kit	A	C	Retail - Office Supplies - Spares	1	1		ea	2.00	No	Yes	VAT	15.00		
AV990-8649	Fuser Heat Roller	A	C	Retail - Office Supplies - Spares	1	1		ea	2.00	No	Yes	VAT	15.00		
AV5588-1001	AM1-Copier Copier Multi 1001 Series	A	A	Retail - Office Supplies - Electronics	45	645x770x1220	1001-AM1	kg	3.00	No	Yes	VAT	15.00	TECHS	Technician Senior
AV5588-1010	Sprint Multi Functional Copier	A	A	Retail - Office Supplies - Equipment	10	10	AV5588	ea	10.00	No	Yes	VAT	15.00		
AV5588-0102	Toner Magenta	A	C	Retail - Office Supplies - Consumables	1	1		ea	1.00	No	Yes	VAT	15.00		
AV5588-1992	Paper Tray	A	B	Retail - Office Supplies - Accessories	2	2		ea	10.00	No	Yes	VAT	15.00		
AV5588-2333	Toner Cyan	A	C	Retail - Office Supplies - Consumables	1	1		ea	1.00	No	Yes	VAT	15.00		
AV5588-2352	Mag Roller	A	C	Retail - Office Supplies - Spares	1	1		ea	2.00	No	Yes	VAT	15.00		
AV5588-2671	Toner Black	A	C	Retail - Office Supplies - Consumables	1	1		ea	1.00	No	Yes	VAT	15.00		
AV5588-3255	Fuser Cleaning Web	A	C	Retail - Office Supplies - Spares	1	1		ea	2.00	No	Yes	VAT	15.00		
AV5588-3671	Staple Unit	A	B	Retail - Office Supplies - Accessories	2	2		ea	10.00	No	Yes	VAT	15.00		
AV5588-4933	Paper Pickup Roller	A	C	Retail - Office Supplies - Spares	1	1		ea	2.00	No	Yes	VAT	15.00		
AV5588-5084	Picker Finger	A	C	Retail - Office Supplies - Spares	1	1		ea	2.00	No	Yes	VAT	15.00		
AV5588-5304	Fuser Roller Gear	A	C	Retail - Office Supplies - Spares	1	1		ea	2.00	No	Yes	VAT	15.00		
AV5588-5526	Fuser Film	A	C	Retail - Office Supplies - Spares	1	1		ea	2.00	No	Yes	VAT	15.00		
AV5588-5598	Wiper Blade	A	C	Retail - Office Supplies - Spares	1	1		ea	2.00	No	Yes	VAT	15.00		
AV5588-6028	Fixing Film Assembly Unit	A	C	Retail - Office Supplies - Spares	2	2		ea	2.00	No	Yes	VAT	15.00		
AV5588-6143	High Yield Reset Lever Gear	A	C	Retail - Office Supplies - Spares	1	1		ea	2.00	No	Yes	VAT	15.00		
AV5588-6376	Toner Yellow	A	C	Retail - Office Supplies - Consumables	1	1		ea	1.00	No	Yes	VAT	15.00		

Related Topics

- [Add Part Definition Details](#)
- [Add Part Definition Defaults](#)
- [Add Part Definition BOM Allocation](#)
- [Add Part Definition Yield Config](#)
- [Add Part Definition Additional Data](#)
- [Add Part Definition User Defined](#)

MNU.026.033