

INVENTORY

PARTS – ADD PART DEFINITION YIELD CONFIG

The **Yield Config** panel in the 'Add new Part' screen is specifically relevant for **C-Class** part definitions, such as toners, paper, network cables, etc.

Here you can record the overall yield of the part and if necessary, specify any service charges related to the meter yield shortfall, for example, **Call Out Fee**.

Accurate information helps to manage yield and service charges effectively.

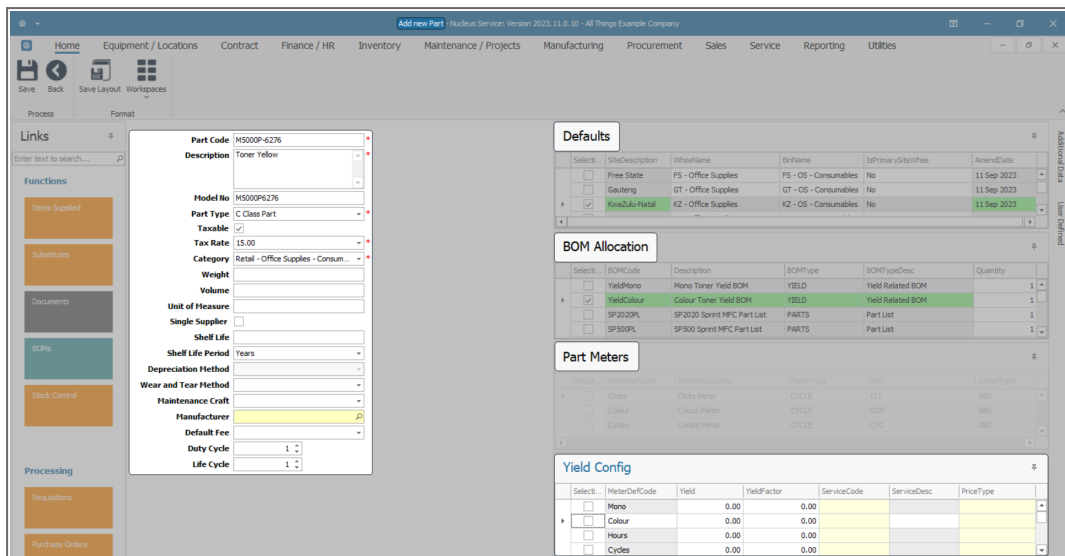
Ribbon Select **Inventory > Parts**



- The **Part Listing** screen will be displayed.
- The data grid will display a list of all the part definitions currently on the system.
- Click on **Add**.

PartCode	Description	Status	PartType	CaDescription	Weight	Volume	ModelNo	UnitOfMeasure	ShelfLife	SolidSupplier	Taxable	TaxType	Rate	CraftCode	CraftDesc	AmendDate
M500P-6028	Fixing Film Assembly Unit	A	C	Retail - Office Supplies - Spares	2	2		ea	2.00	No	Yes	VAT	15.00			Jan 1 1900 12:00AM
M500P-7652	Maintenance Kit	A	C	Retail - Office Supplies - Spares	1	1		ea	2.00	No	Yes	VAT	15.00			Jan 1 1900 12:00AM
M500P-3295	Fuser Cleaning Web	A	C	Retail - Office Supplies - Spares	1	1		ea	2.00	No	Yes	VAT	15.00			Jan 1 1900 12:00AM
M500P-2671	Toner Black	A	C	Retail - Office Supplies - Consumables	1	1		ea	1.00	No	Yes	VAT	15.00			Jan 1 1900 12:00AM
M500P-0102	Toner Magenta	A	C	Retail - Office Supplies - Consumables	1	1		ea	1.00	No	Yes	VAT	15.00			Jan 1 1900 12:00AM
M500P-2333	Toner Cyan	A	C	Retail - Office Supplies - Consumables	1	1		ea	1.00	No	Yes	VAT	15.00			Jan 1 1900 12:00AM
M500P-6376	Toner Yellow	A	C	Retail - Office Supplies - Consumables	1	1		ea	1.00	No	Yes	VAT	15.00			Mar 14 2024 9:56AM
C9800	Sprint Multi Functional Copier	A	A	Retail - Office Supplies - Equipment	10	10	C9800	ea	10.00	No	Yes	VAT	15.00			Jan 1 1900 12:00AM
C9800-1992	Paper Tray	A	B	Retail - Office Supplies - Accessories	2	2		ea	10.00	No	Yes	VAT	15.00			Jan 1 1900 12:00AM
C9800-3671	Staple Unit	A	B	Retail - Office Supplies - Accessories	2	2		ea	10.00	No	Yes	VAT	15.00			Jan 1 1900 12:00AM
C9800-7223	Fuser Unit	A	B	Retail - Office Supplies - Accessories	2	2		ea	5.00	No	Yes	VAT	15.00			Jan 1 1900 12:00AM
C9800-6143	High Yield Reset Lever Gear	A	C	Retail - Office Supplies - Spares	1	1		ea	2.00	No	Yes	VAT	15.00			Jan 1 1900 12:00AM
C9800-8649	Fuser Heat Roller	A	C	Retail - Office Supplies - Spares	1	1		ea	2.00	No	Yes	VAT	15.00			Jan 1 1900 12:00AM
C9800-5304	Fuser Roller Gear	A	C	Retail - Office Supplies - Spares	1	1		ea	2.00	No	Yes	VAT	15.00			Jan 1 1900 12:00AM
C9800-4933	Paper Pickup Roller	A	C	Retail - Office Supplies - Spares	1	1		ea	2.00	No	Yes	VAT	15.00			Jan 1 1900 12:00AM
C9800-3084	Picker Finger	A	C	Retail - Office Supplies - Spares	1	1		ea	2.00	No	Yes	VAT	15.00			Jan 1 1900 12:00AM
C9800-5598	Stripper Blade	A	C	Retail - Office Supplies - Spares	1	1		ea	2.00	No	Yes	VAT	15.00			Jan 1 1900 12:00AM
C9800-2352	Mag Roller	A	C	Retail - Office Supplies - Spares	1	1		ea	2.00	No	Yes	VAT	15.00			Jan 1 1900 12:00AM
C9800-7335	Mag Roller Sleeve	A	C	Retail - Office Supplies - Spares	1	1		ea	2.00	No	Yes	VAT	15.00			Jan 1 1900 12:00AM
C9800-5526	Fuser Film	A	C	Retail - Office Supplies - Spares	1	1		ea	2.00	No	Yes	VAT	15.00			Jan 1 1900 12:00AM
C9800-6028	Fixing Film Assembly Unit	A	C	Retail - Office Supplies - Spares	2	2		ea	2.00	No	Yes	VAT	15.00			Jan 1 1900 12:00AM
C9800-7652	Maintenance Kit	A	C	Retail - Office Supplies - Spares	1	1		ea	2.00	No	Yes	VAT	15.00			Jan 1 1900 12:00AM
C9800-3295	Fuser Cleaning Web	A	C	Retail - Office Supplies - Spares	1	1		ea	2.00	No	Yes	VAT	15.00			Jan 1 1900 12:00AM
C9800-2671	Toner Black	A	C	Retail - Office Supplies - Consumables	1	1		ea	1.00	No	Yes	VAT	15.00			Jan 1 1900 12:00AM
C9800-0102	Toner Magenta	A	C	Retail - Office Supplies - Consumables	1	1		ea	1.00	No	Yes	VAT	15.00			Jan 1 1900 12:00AM
C9800-2333	Toner Cyan	A	C	Retail - Office Supplies - Consumables	1	1		ea	1.00	No	Yes	VAT	15.00			Jan 1 1900 12:00AM

- The **Add new part** screen will open.
- Follow the process to add the part definition [Details](#) and [Defaults](#).
- Follow the process to add part definition [BOM Allocations](#), if required.
- Follow the process to add part definition [Part Meters](#), if required.
Only **A** or **B-Class** parts can have meters set up on them. In this example, the Part Meters panel is **greyed out**, (inactive), as it does not apply to **C-Class** parts.
- Move further down the right hand side of the Add new Part screen to the **Yield Config** panel.
- The **Yield Config** panel will list all the available yields that can be linked to a **C-Class** part definition.



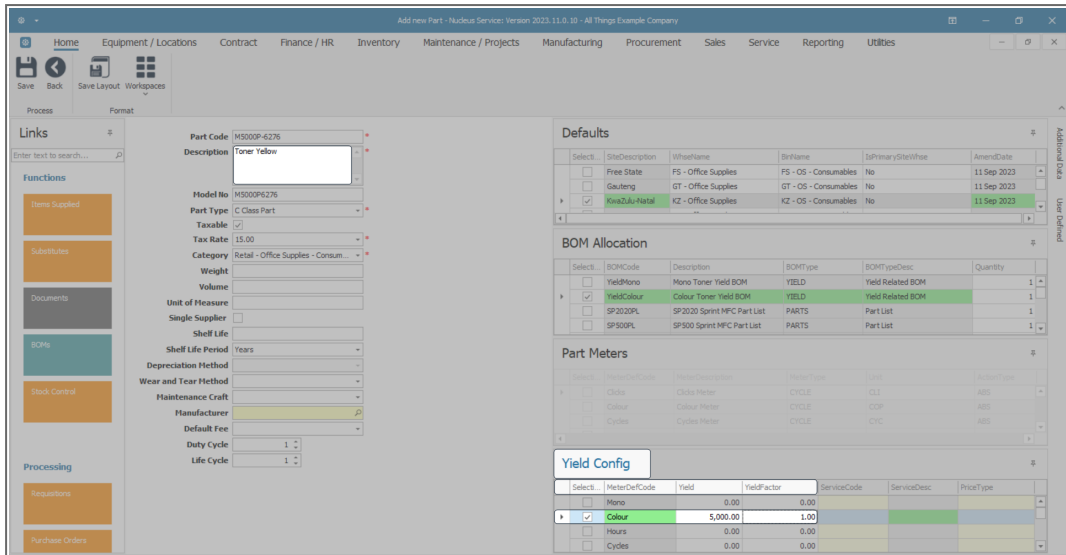
ADD YIELD CONFIG INFORMATION:

- In the **Selection** column, select the check box in front of the **Meter Definition Code** that you wish to link to this part definition.

Note: The selection will be linked to the **Part Description** recorded in the part definition details. If this is a **Black Toner** for example, then a **Mono meter**¹ will be linked in this panel.

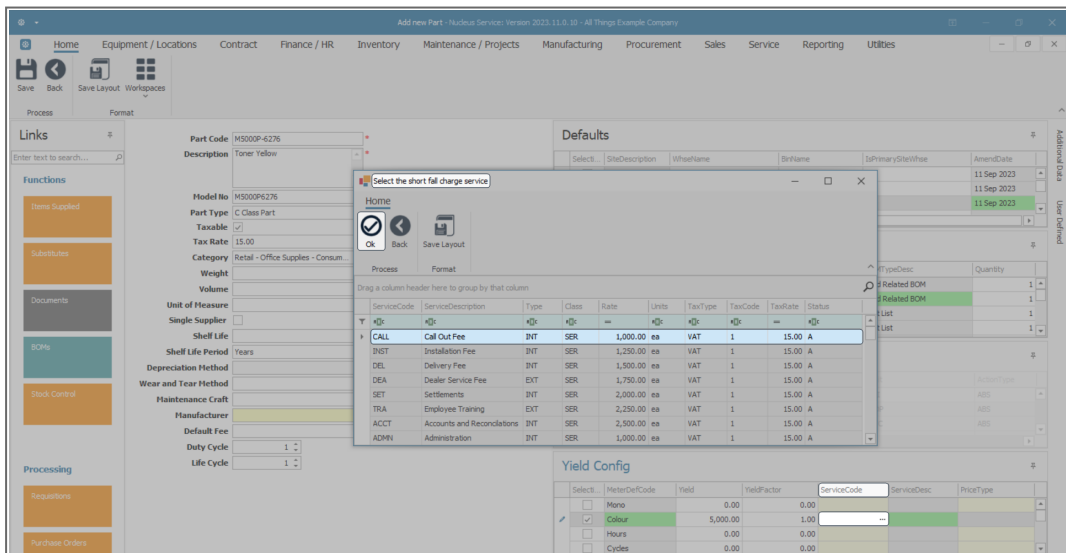
- Yield:** Click in this field and either type in or use the arrow indicators to enter the yield in meter units. This is how many prints can be generated. For example, if **5000** is entered, that would indicate that this toner will yield (print) 5000 copies.
- Yield Factor:** The factor should be set to **1**. This is calculated on the basis that **1** toner will yield (print) 5000 copies.

¹Mono is short for monochrome. A Mono meter prints solely in black.



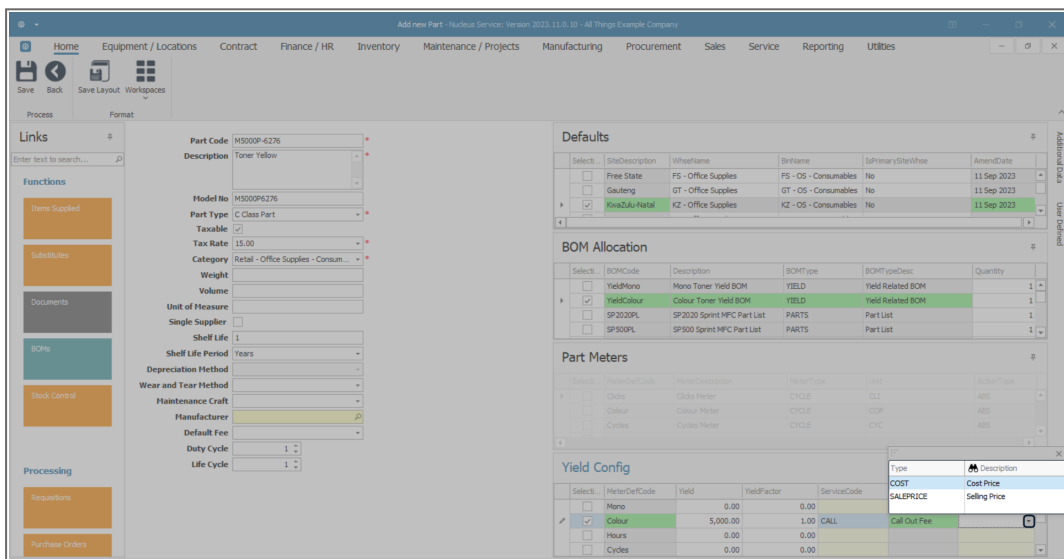
- **Service Code:** Click in this text box to reveal an ellipsis button.
- Click on the ellipsis button to display the **Select the short fall charge service** pop up screen.
- Select the **row** of the short fall charge service that should be used.
 - In this image, [CALL - Call Out Fee] has been selected.
- Click on **Ok**.

Note: These Service Codes are set up in Nucleus Service: Sales > Services > **Add** (new service).

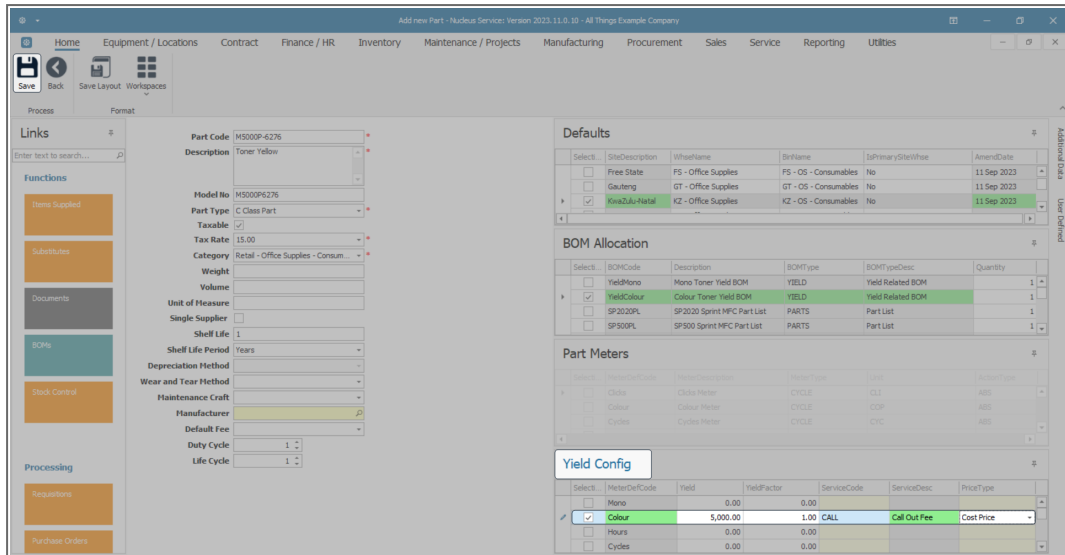


- **Service Description:** This will now be populated with the selected short fall charge service long description. (This will be seen by the customer on their invoice.)
- **Price Type:** Click on the drop-down arrow to reveal the Price Type list and click on the list item you wish to add to this meter definition.
- In this example **Cost Price** is selected.

Note: Price Type defines whether the short fall charge service is based on the Cost Price or the Selling Price of the part.



- When you have finished assigning the **Yield Config** details to this part definition, click on **Save**.



- The **Yield Config** details will be saved and you will return to the **Part Listing** screen.

Related Topics

- [Add Part Definition Details](#)
- [Add Part Definition Defaults](#)
- [Add Part Definition BOM Allocation](#)
- [Add Part Definition Part Meters](#)
- [Add Part Definition Additional Data](#)
- [Add Part Definition User Defined](#)

MNU.026.034