

## INVENTORY

### INTER-BIN STOCK TRANSFER

This process enables you to transfer stock **from** and **to** any **bin** in a selected warehouse.

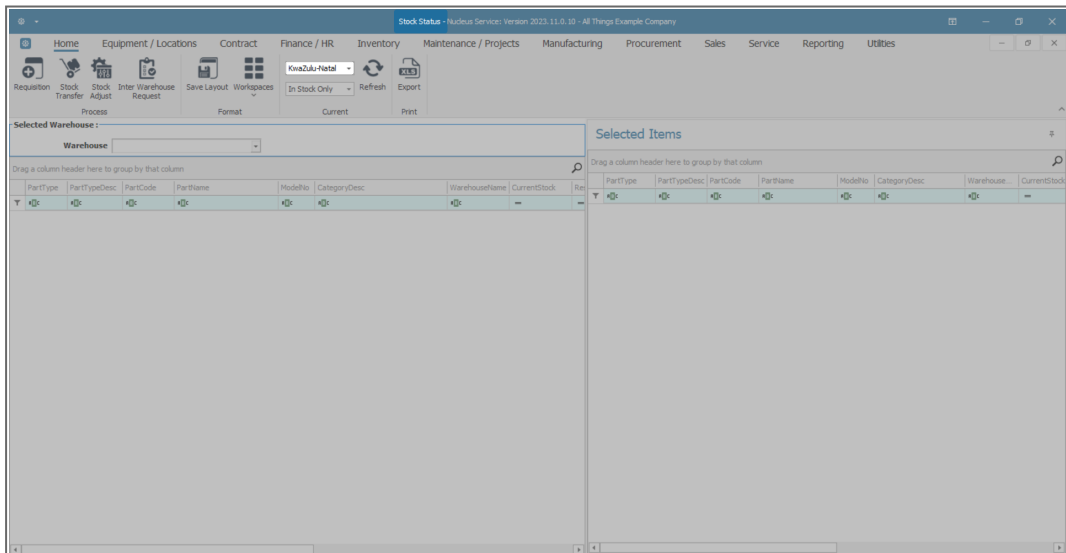
**Ribbon** Select **Inventory > Stock**



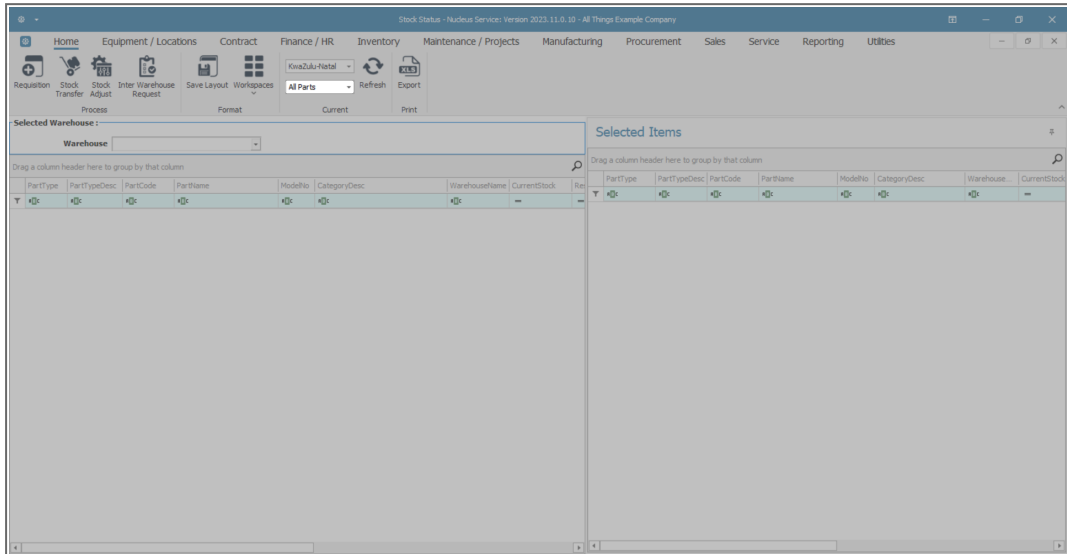
- The **Stock Status** screen will be displayed.

### SELECT SITE AND STATUS

- Select the source location or **Site** (where the stock is currently).
  - In this image, **KwaZulu-Natal** has been selected.

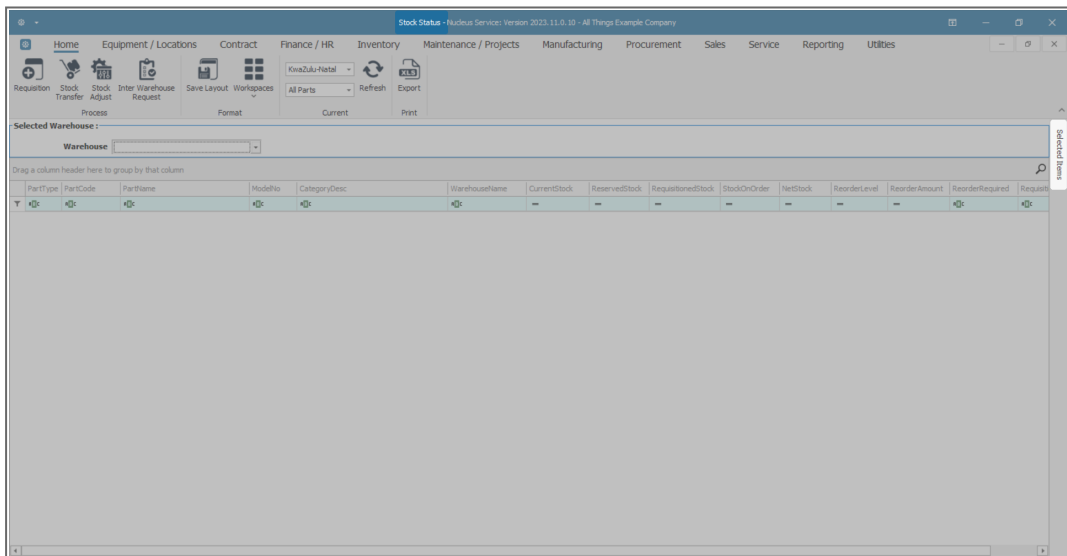


- Select the **status**.
  - You can use either the **In Stock** or the **All Parts** status.
  - In this example, **All Parts** has been selected.



## SELECTED ITEMS PANEL

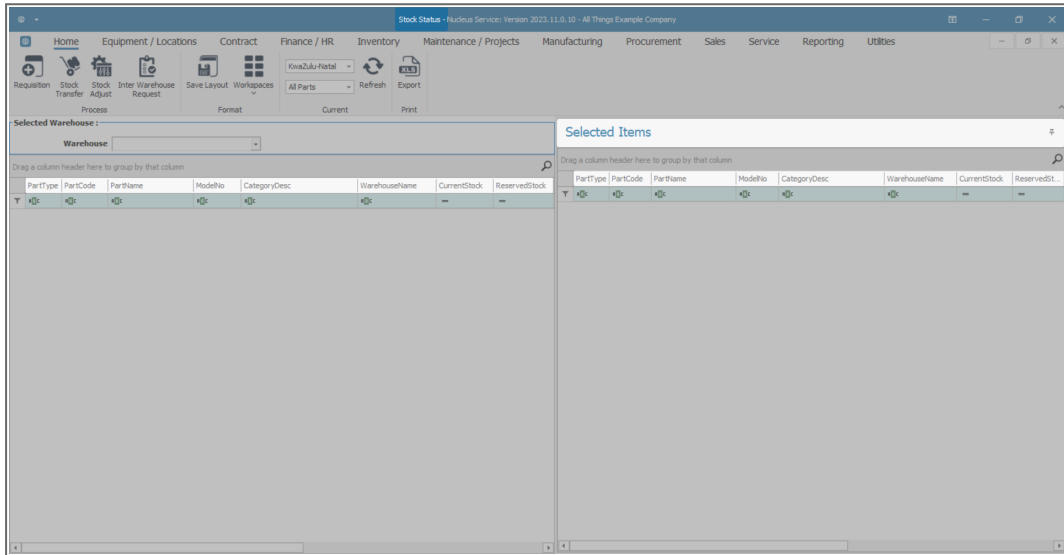
- Click on the **Selected Items** tab.



- The **Selected Items** panel will be **expanded**.
- **Dock** this panel to make it easier to work in.

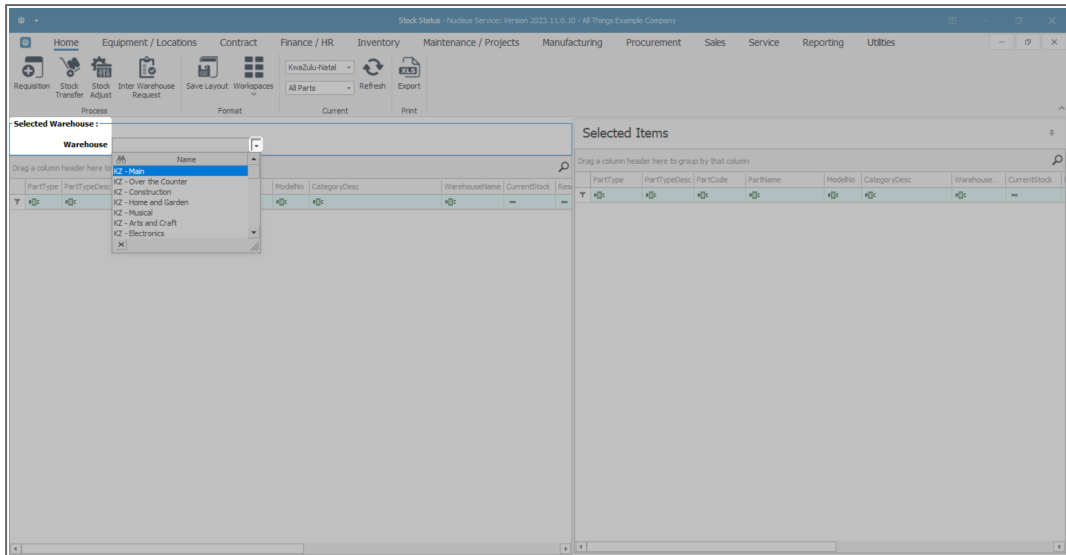
Refer to [Docking Panels](#) and [Save Layout](#) for detailed handling on these topics.

**Note:** You will see that this **Selected Items** header row contains exactly the same header row details as the **Selected Warehouse** panel.

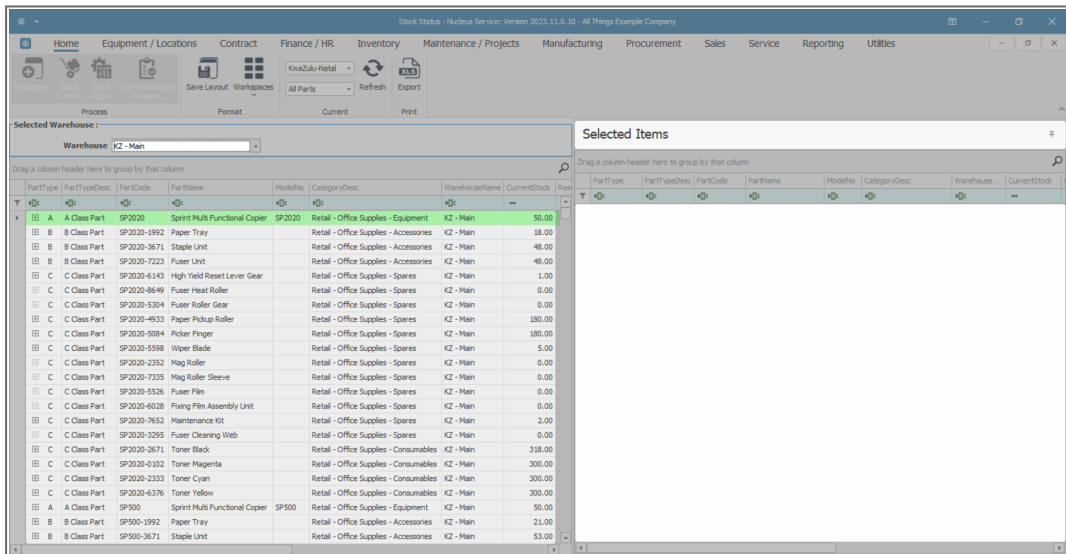


## SELECT THE WAREHOUSE

- Click on the **drop-down arrow** in the **Warehouse** field and select the **Warehouse**.
  - In this image, **KZN Main** has been selected.

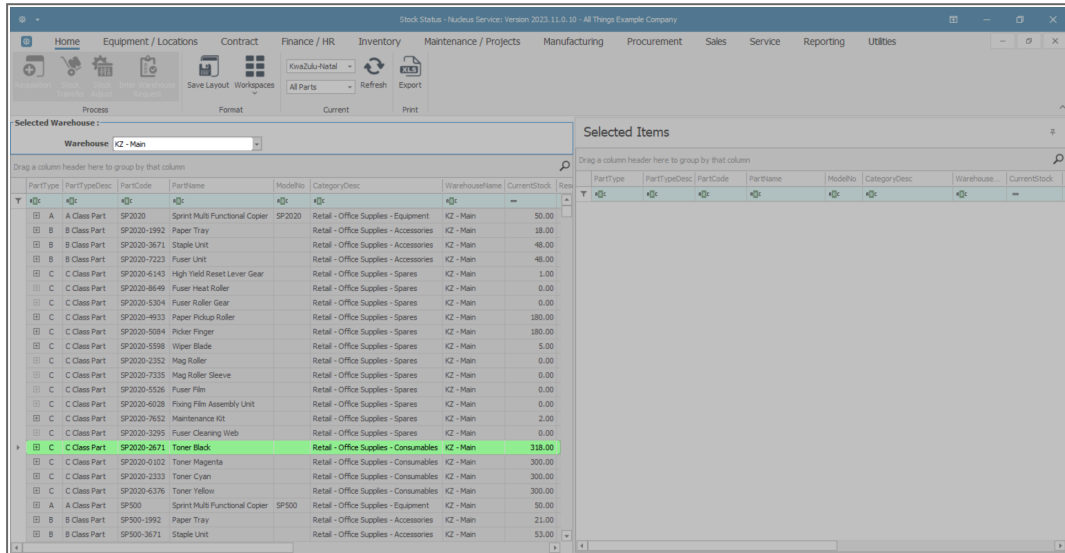


- The **Selected Warehouse** frame will now be populated with the **stock details** of all the parts / equipment items linked to that warehouse.
- The **Selected Items** frame is where you will **drag and drop** stock item lines that you wish to action.

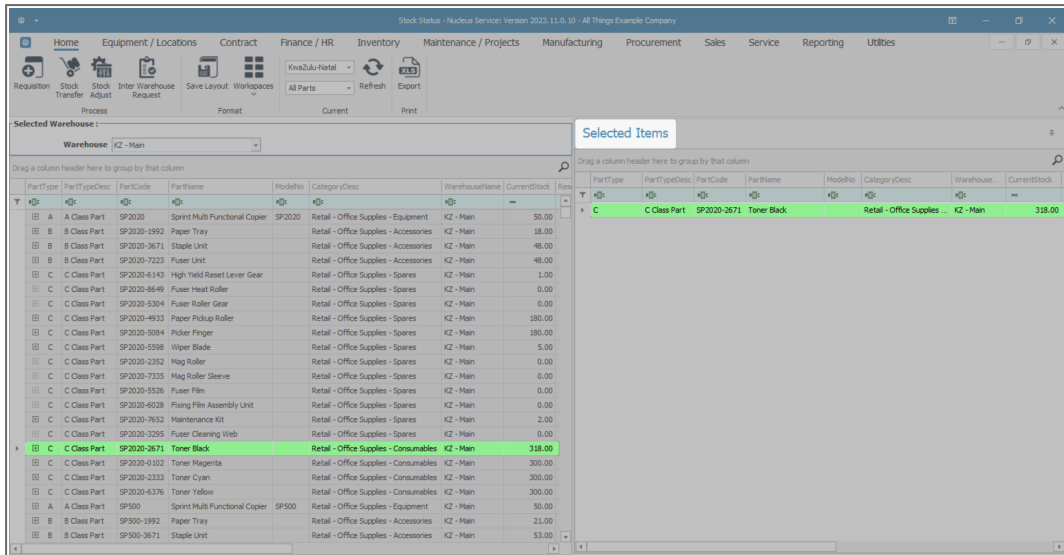


## C-CLASS SINGLE ITEM STOCK TRANSFER

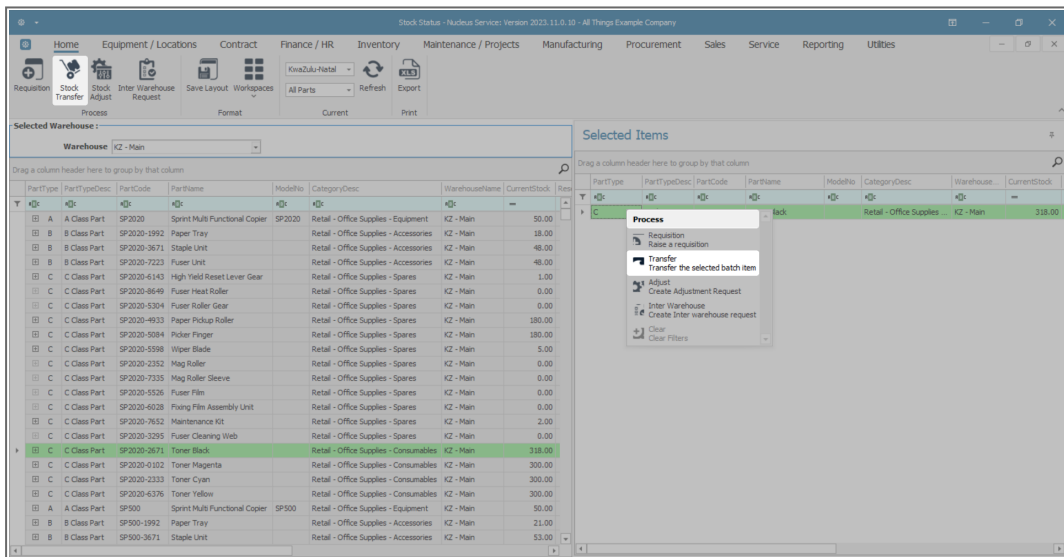
- In the Selected Warehouse frame, **click and hold** anywhere in the row of the item line that you wish to transfer.
- **Drag and drop** this item line into the **Selected Items** frame.



- The selected item line can now be viewed in the **Selected Items** frame.
  - **Note:** The selected item line can still be viewed in the **Selected Warehouse** frame.
- **Expand** the **Selected Items** frame if you wish to view more of the columns in that frame.



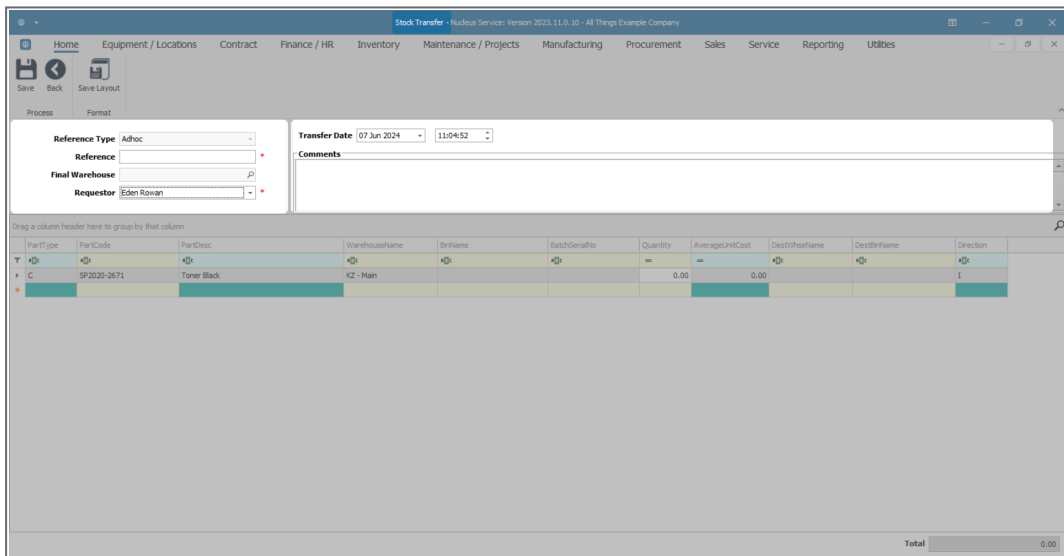
- Either **right click** in the row of the selected item line.
- A **Process** menu will pop up.
- Click on **Transfer - Transfer the selected batch item**.
- Or, click on **Stock Transfer**.



## TRANSFER HEADER DETAILS

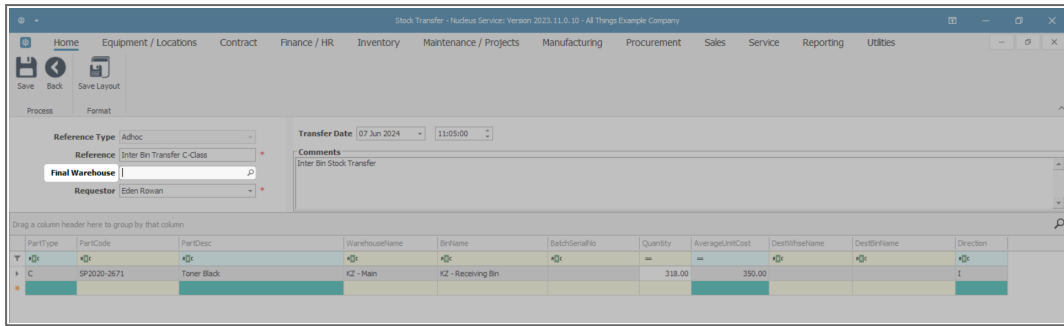
The **Stock Transfer** screen will be displayed.

- **Reference Type:** This will auto populate with **Adhoc**.
- **Reference:** Type in your reference for this stock transfer.
- **Final Warehouse:** For this inter-bin transfer process we will address this field in the next image.
- **Requestor:** This will auto populate with the person currently logged on to the system. You can click on the drop-down arrow and select an alternative person if required.
- **Transfer Date and Time:** This will auto populate with the current date and time.
  - **Date:** You can either type in or click on the drop-down arrow and use the calendar function to select an alternative date if required.
  - **Time:** You can either type in or use the directional arrows to select an alternative time if required.
- **Comments:** Type in a comment relating to the reason for the stock transfer.

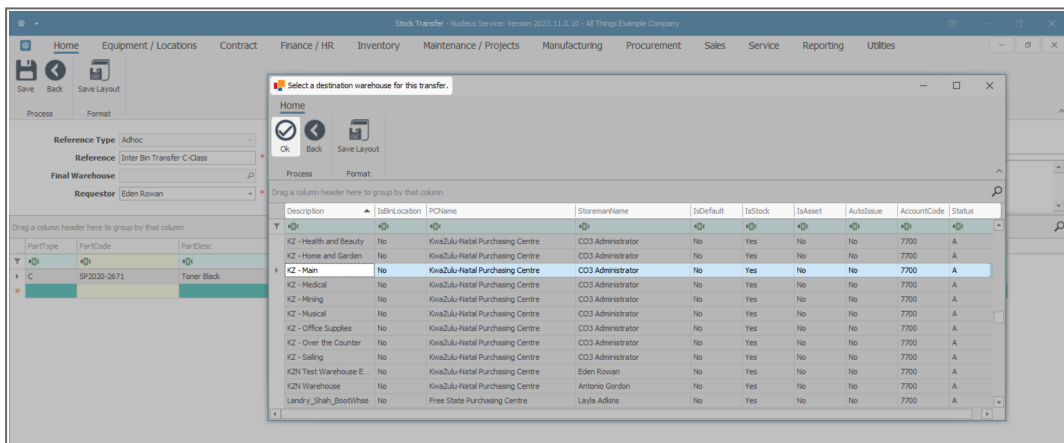


PartType	PartCode	PartDesc	WarehouseName	BinName	BatchSerialNo	Quantity	AverageUnitCost	DestWarehouseName	DestBinName	Direction
C	SP2020-2671	Toner Black	K2 - Main			0.00	0.00			I
<b>Total</b>										0.00

- **Final Warehouse:** Click on the **search** button in this field.



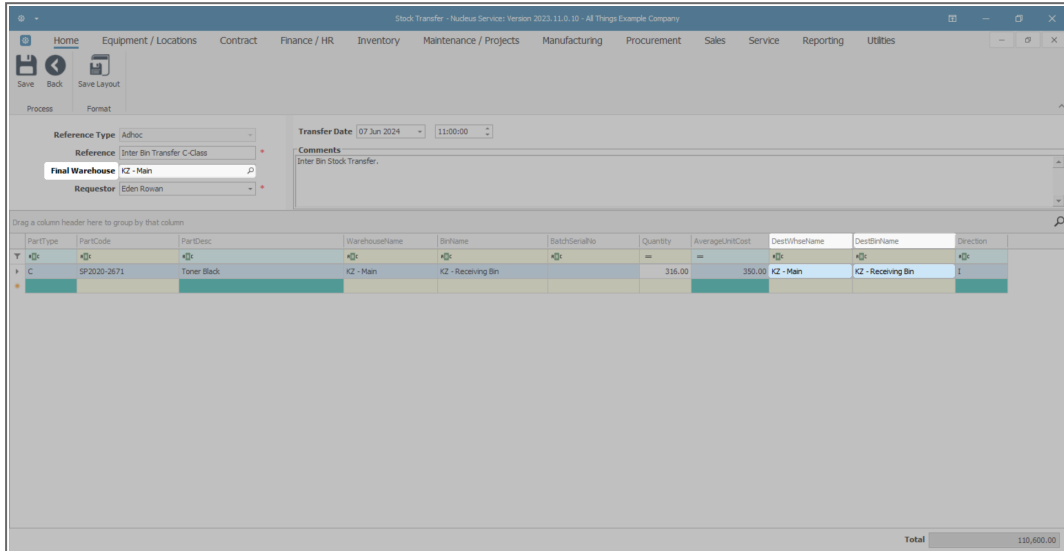
- The **Select a destination warehouse for this transfer** screen will pop up.
- Click on the **row selector** in front of the **warehouse** that you wish to be the **final destination** warehouse.
  - **Note:** As you are doing an **inter-bin stock transfer** - ensure that you select the **same** warehouse as the **source** warehouse.
- Click on **Ok**.



- With the selection made in the previous step, the **Destination Warehouse Name** column in the parts data grid will also populate with the selection made.
  - **Note:** If there is only **1** bin linked to the final warehouse then the **Destination Bin Name** field will also populate with that **1**



bin name. If, however, there are **2 or more** bins linked to the **Destination Warehouse**, then the system will leave the field **blank** for you to make the correct bin selection.

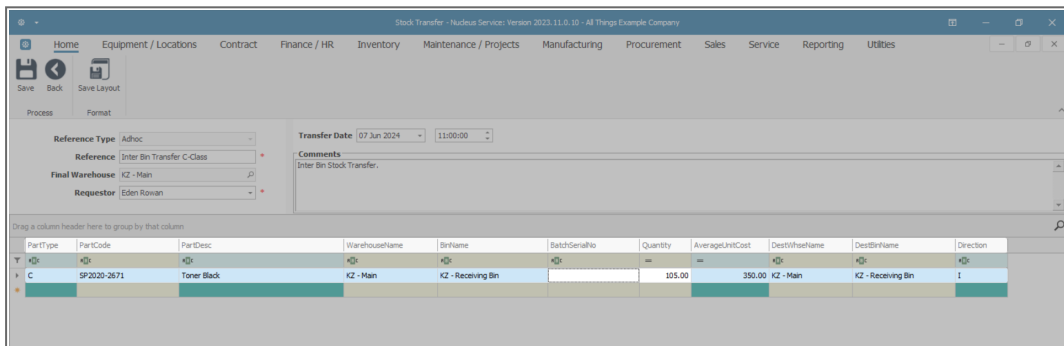


## PARTS DATA GRID

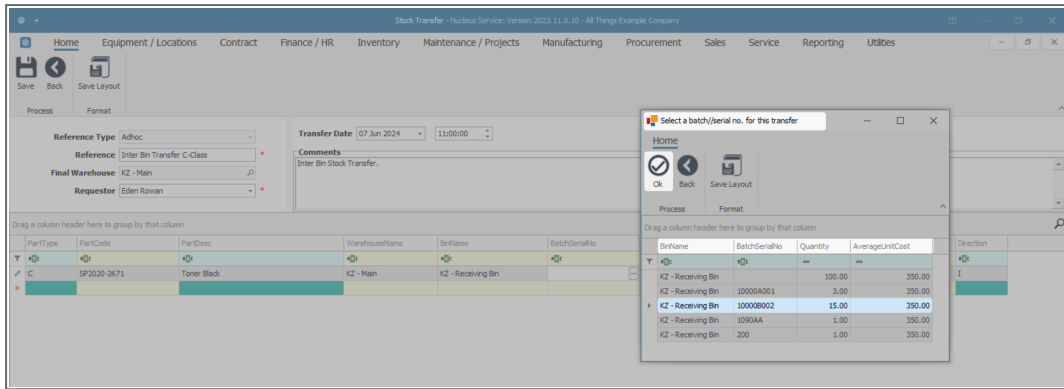
- **Part Type:** This will auto populate with the part type code of the item type selected in the **Stock Status** screen.
- **Part Code:** This will auto populate with the part code of the item selected in the **Stock Status** screen.
- **Part Desc:** This will auto populate with the part description of the item selected in the **Stock Status** screen.
- **Warehouse Name:** This will auto populate with the source Warehouse Name selected in the **Stock Status** screen.
- **Bin Name:** This will auto populate with the Bin Name that contains the item selected in the **Stock Status** screen.
- You will note that the **Quantity** field will initially auto populate with the total quantity of items available in all the batches in the

selected source warehouse bin. The **Average Unit Cost** fields will be populated with the average cost of all of these items in the selected bin.

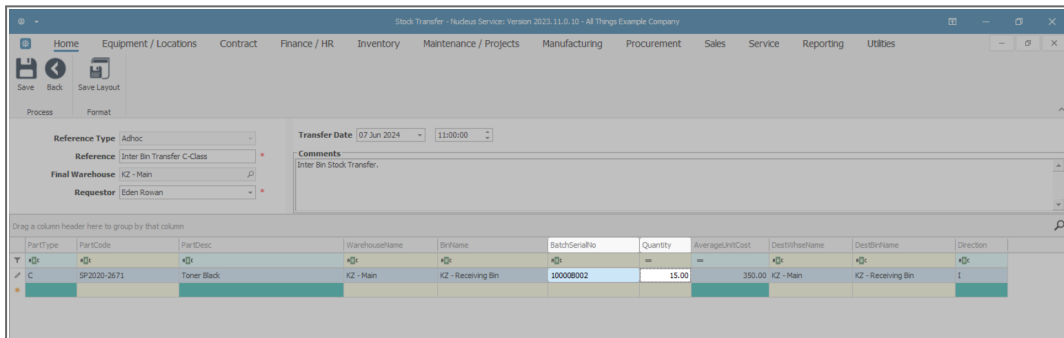
- If there is only one batch of the selected item available in the selected bin, then the **Batch Serial No** field will populate with that batch number. However, if there is more than one batch, then the system will leave this field blank for you to select the batch number if batch tracking is enabled. If batch tracking is not enabled, then this field will be blank.
  - Click in the **Batch Serial No** field.



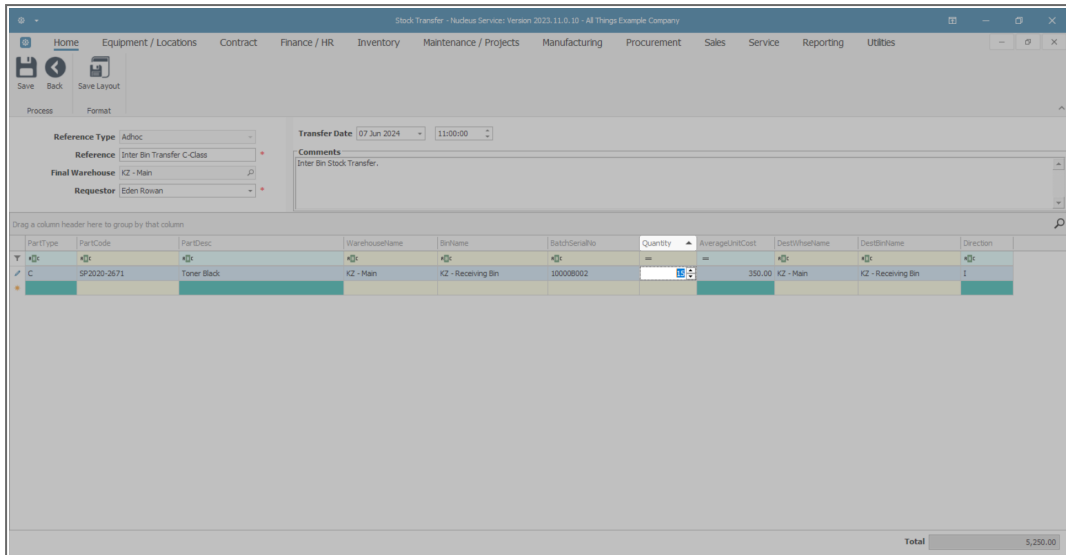
- An **ellipsis** button will be revealed.
- Click on this button to display the **Select a batch//serial no. for this transfer** pop up screen.
- As this is a **C-Class item**, you will see that this screen lists the **Batch/Serial Nos**.
- Click on the **row selector** in front of the **batch/serial no** that you wish to assign for the stock transfer.
  - Click on **Ok**.
- Make note of the **quantity** available in the selected batch.



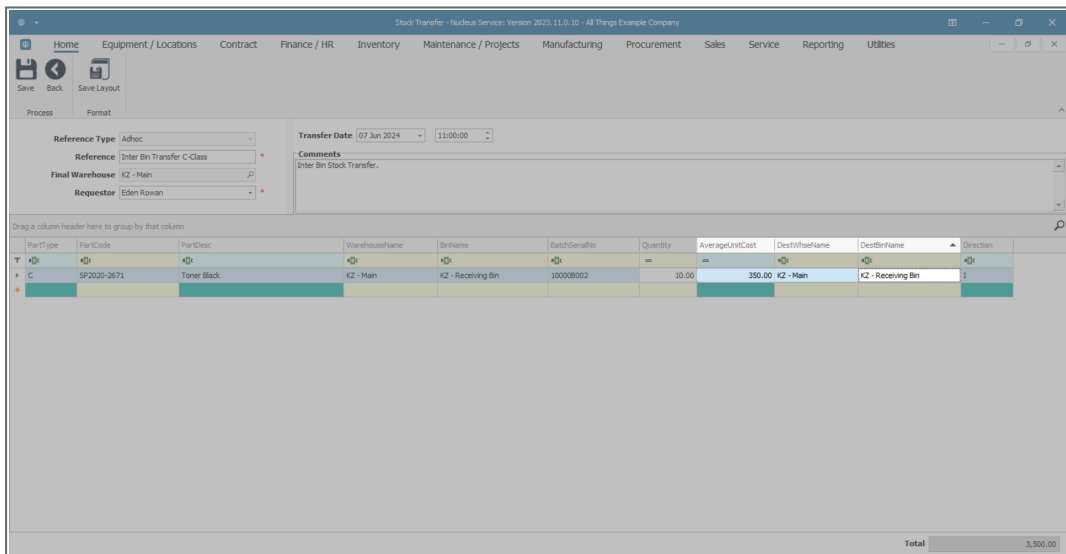
- The selected number will now populate the **BatchSerialNo** field.
- You will note that the **Quantity** field has now populated with the quantity available in the selected batch.
- Click in this **Quantity** field.



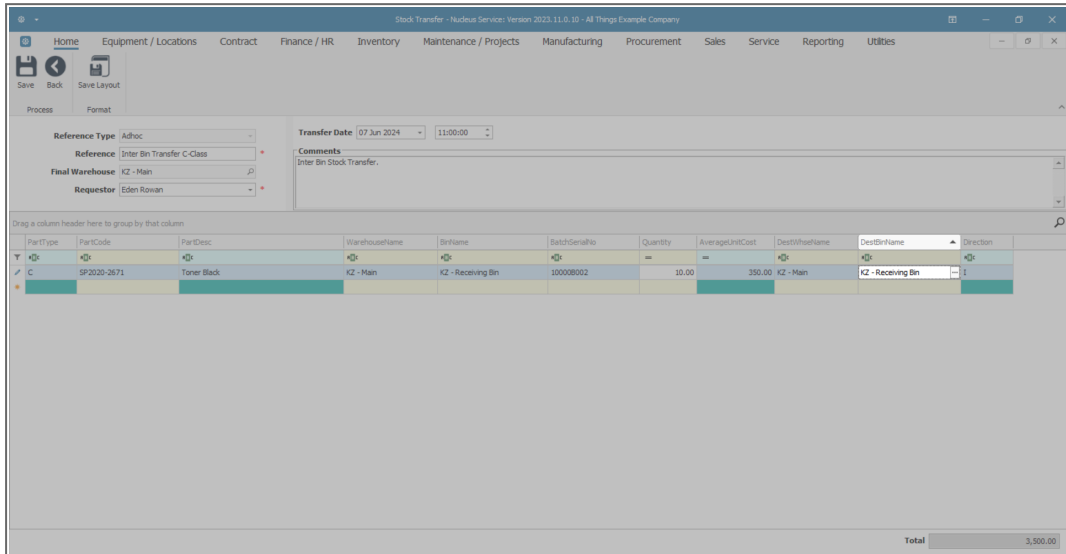
- Directional arrows will be revealed. You can either type in or use these arrows to select the amount to be transferred.
  - **Note:** The system will **not** allow you select more than the quantity available in the batch.



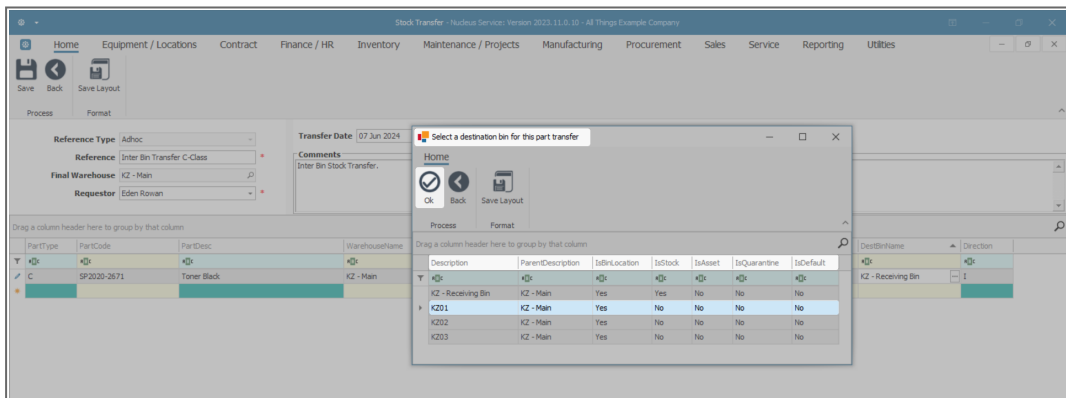
- **Average Unit Cost:** This will auto populate with the average unit cost of the selected item type in the selected batch.
- **Destination Warehouse Name:** This auto populated (as explained above) when the **Final Warehouse** was selected.
- Click in the **Destination Bin Name:** field.



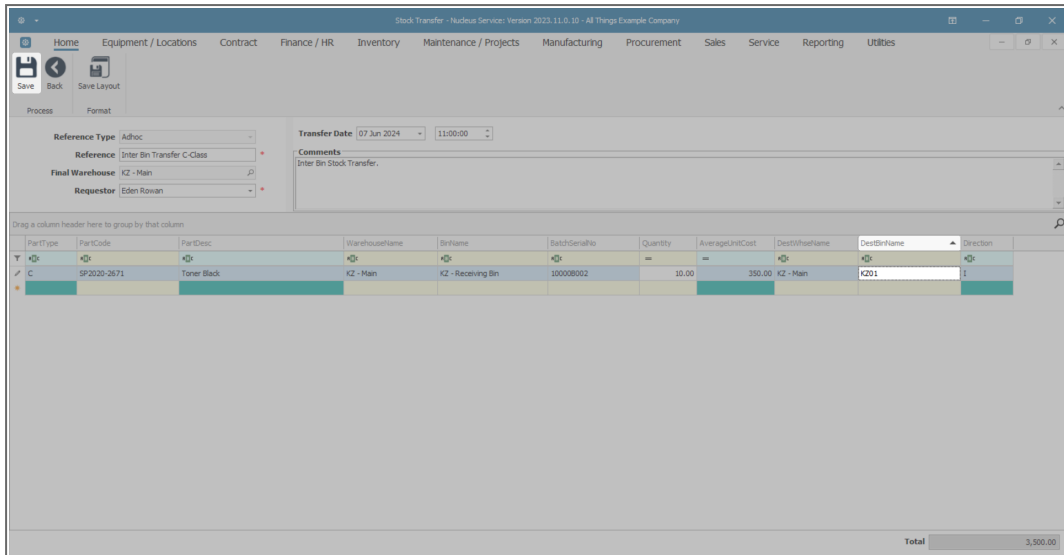
- An **ellipsis** button will be revealed.
- Click on this button to display the **Select a destination bin for this part transfer** pop up screen.



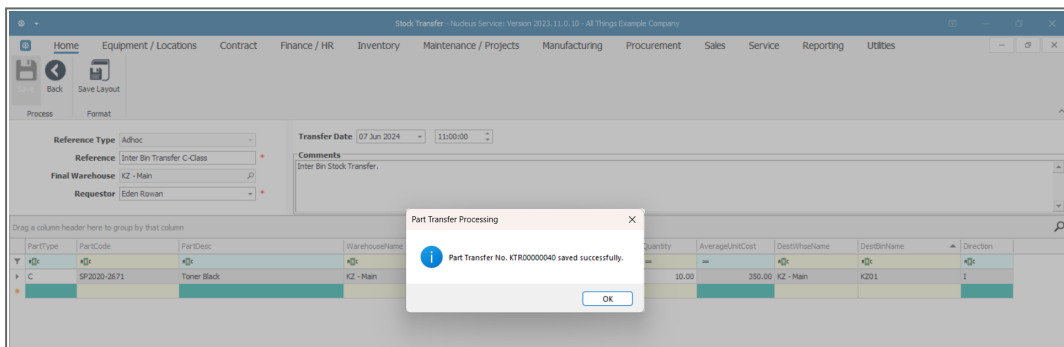
- Click on the **row selector** in front of the **destination bin** that you wish to select for the stock transfer.
- Click on **Ok**.



- The selected **bin name** will populate the field.
- When you have finished adding details to the **Stock Transfer** screen, click on **Save**.

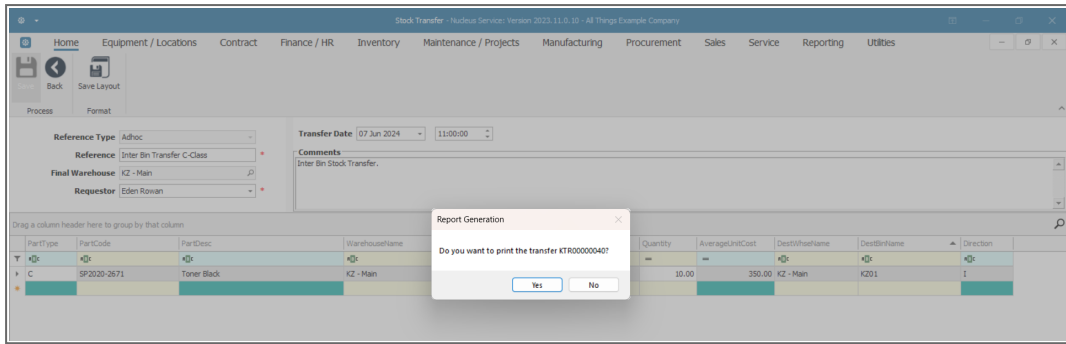


- A **Part Transfer Processing** message will pop up, informing you that -
  - **Part Transfer No. [ ] saved successfully.**
- Click on **OK**.



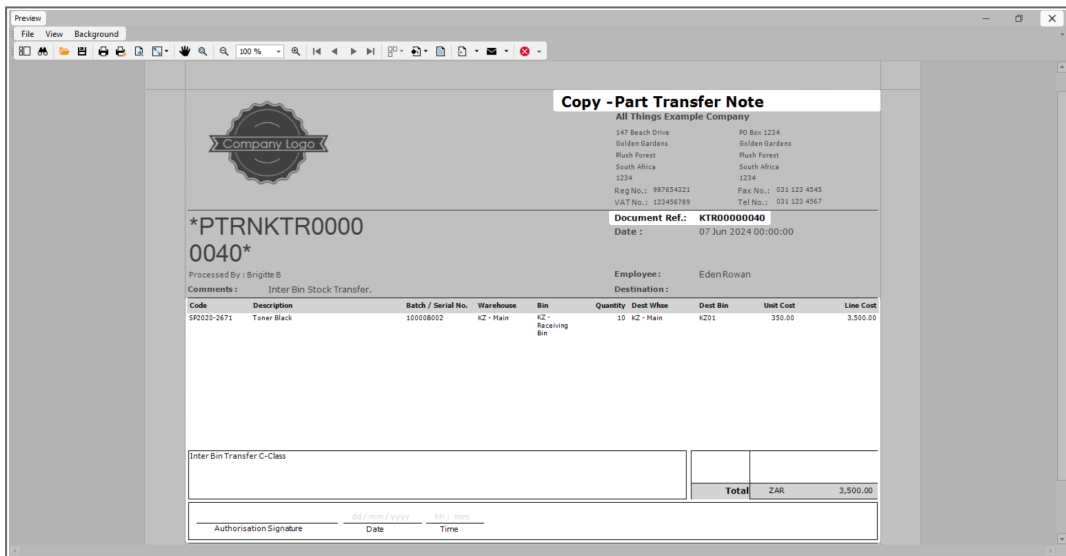
## Print C-Class Single Item Transfer

- A **Report Generation** message will pop up, asking -
  - **Do you want to print the transfer [ ]?**
- Click on **Yes**.



The **Report Preview** screen will be displayed. You can see that the **C-Class** item has been transferred from:

- the Main Warehouse **Bin** KZN Receiving to
- the Main Warehouse **Bin** KZ01.
- From here you can **View, Print, Export** or **Email** the Part Transfer Note.
- **Close** the **Report Preview** screen when done.



- You will return to the **Stock Status** screen.

## C-CLASS MULTI ITEM STOCK TRANSFER

- You can select multiple items in **3** ways:

## Method 1

- Click in the row of the first item line, press and hold the **Shift** button on your keyboard, then use the **up or down arrows** on your keyboard to select the items in order. (The items should all be highlighted as they are selected).

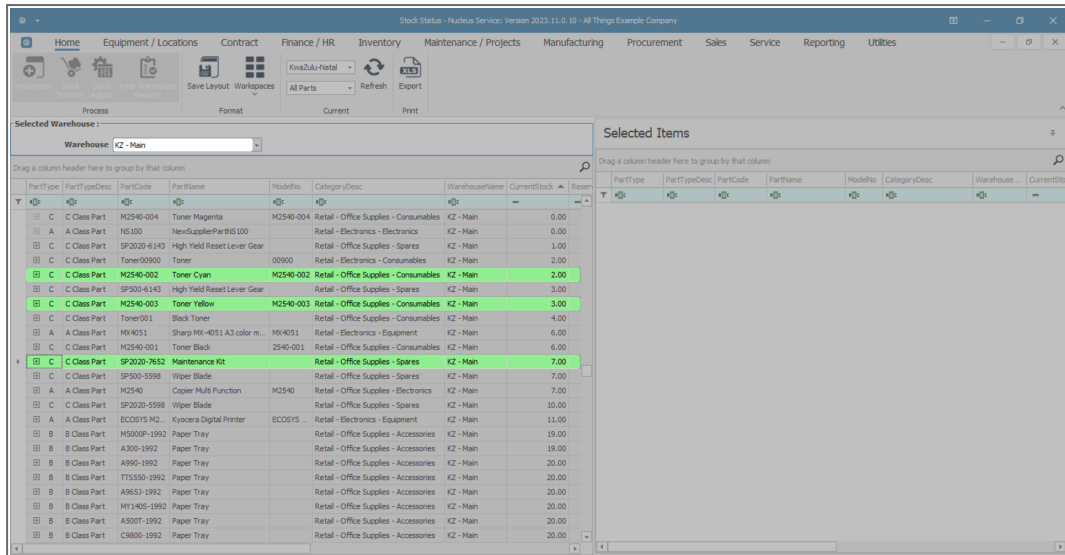
The screenshot shows a software window titled 'Stock Status - Nucleus Service: Version 2023.11.0.10 - All Things Example Company'. The 'Selected Warehouse' is 'K2 - Main'. The main table displays a list of inventory items with columns for PartType, PartTypeDesc, PartCode, PartName, ModelNo, Category/Desc, WarehouseName, and CurrentStock. Several rows are highlighted in green, indicating they are selected. The 'Selected Items' pane on the right is currently empty.

PartType	PartTypeDesc	PartCode	PartName	ModelNo	Category/Desc	WarehouseName	CurrentStock
C	Class Part	M2540-004	Toner Magenta		Retail - Office Supplies - Consumables	K2 - Main	0.00
A	Class Part	NS100	NetSupplierPartNS100		Retail - Electronics - Electronics	K2 - Main	0.00
C	Class Part	SP2020-6143	High Yield Reset Lever Gear		Retail - Office Supplies - Spares	K2 - Main	1.00
C	Class Part	Toner00900	Toner	00900	Retail - Electronics - Consumables	K2 - Main	2.00
C	Class Part	M2540-002	Toner Cyan	M2540-002	Retail - Office Supplies - Consumables	K2 - Main	2.00
C	Class Part	SP500-6143	High Yield Reset Lever Gear		Retail - Office Supplies - Spares	K2 - Main	3.00
C	Class Part	M2540-003	Toner Yellow	M2540-003	Retail - Office Supplies - Consumables	K2 - Main	3.00
C	Class Part	Toner001	Black Toner		Retail - Office Supplies - Consumables	K2 - Main	4.00
A	Class Part	M61051	Sharp MW-4051 A3 color m	M61051	Retail - Electronics - Equipment	K2 - Main	5.00
C	Class Part	M2540-001	Toner Black	2540-001	Retail - Office Supplies - Consumables	K2 - Main	6.00
C	Class Part	SP2020-7652	Maintenance Kit		Retail - Office Supplies - Spares	K2 - Main	7.00
C	Class Part	SP500-5598	Wiper Blade		Retail - Office Supplies - Spares	K2 - Main	7.00
A	Class Part	M2540	Copier Multi Function	M2540	Retail - Office Supplies - Electronics	K2 - Main	7.00
C	Class Part	SP2020-5598	Wiper Blade		Retail - Office Supplies - Spares	K2 - Main	10.00
A	Class Part	ECC0515 M2	Kyocera Digital Printer	ECC0515	Retail - Electronics - Equipment	K2 - Main	11.00
B	Class Part	M5000P-1992	Paper Tray		Retail - Office Supplies - Accessories	K2 - Main	19.00
B	Class Part	A300-1992	Paper Tray		Retail - Office Supplies - Accessories	K2 - Main	19.00
B	Class Part	A990-1992	Paper Tray		Retail - Office Supplies - Accessories	K2 - Main	20.00
B	Class Part	IT5350-1992	Paper Tray		Retail - Office Supplies - Accessories	K2 - Main	20.00
B	Class Part	A9653-1992	Paper Tray		Retail - Office Supplies - Accessories	K2 - Main	20.00
B	Class Part	MY1405-1992	Paper Tray		Retail - Office Supplies - Accessories	K2 - Main	20.00
B	Class Part	A5007-1992	Paper Tray		Retail - Office Supplies - Accessories	K2 - Main	20.00
B	Class Part	C9800-1992	Paper Tray		Retail - Office Supplies - Accessories	K2 - Main	20.00

## Method 2

- Click on the first item, then hold the **Ctrl** button on your keyboard, whilst using your **mouse** to click on the other item lines that you wish to add. Use this method to select items that are not in order. (The items should all be highlighted as they are selected).





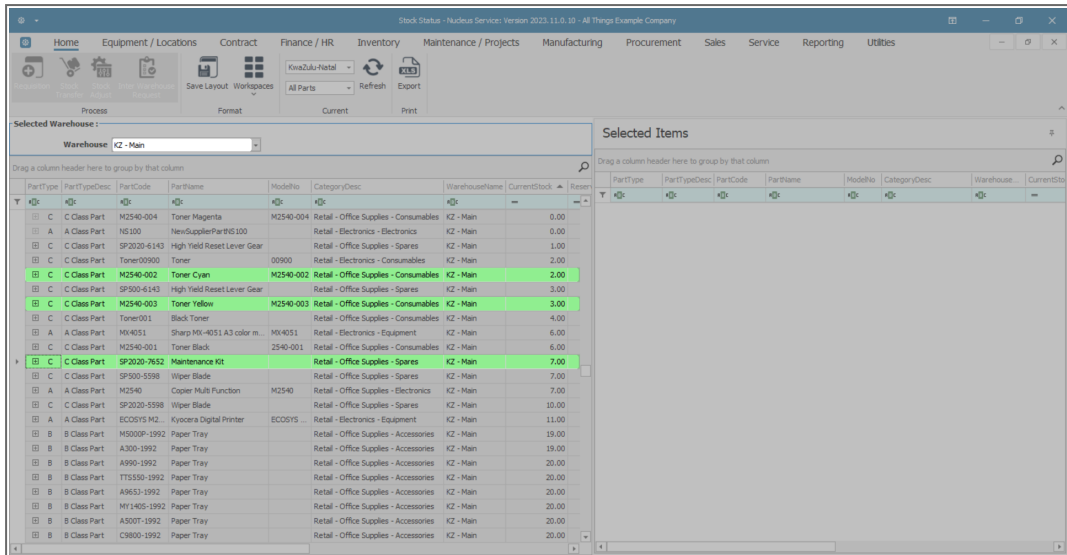
Once you have selected multiple items using either of the above methods, hold down on the **Shift** key, click on the last **highlighted** item line, and **drag and drop** into the **Selected Items** frame. **All** the selected lines will then be copied across to this frame.

### Method 3

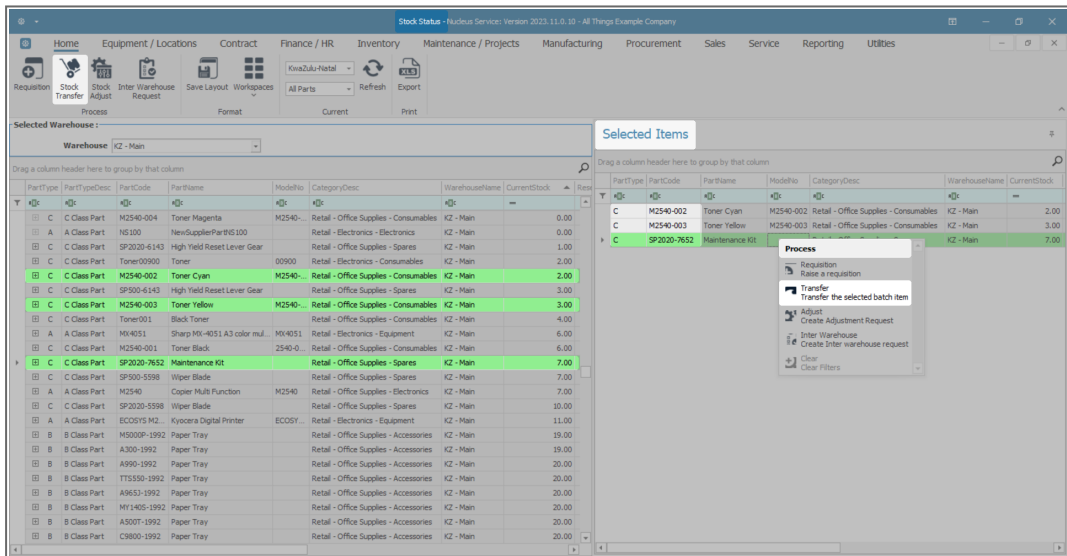
- Click on the item line. (The item line should be **highlighted** as selected). **Drag** and **drop** the line into the **Selected Items** frame. Continue adding items in this way until you have all the required items listed in the **Selected Items** frame.

**Note:** You **cannot** use the same item line number **more than once** on a multi-line stock transfer.

If you do, the system will prompt you with an **error** message upon saving.

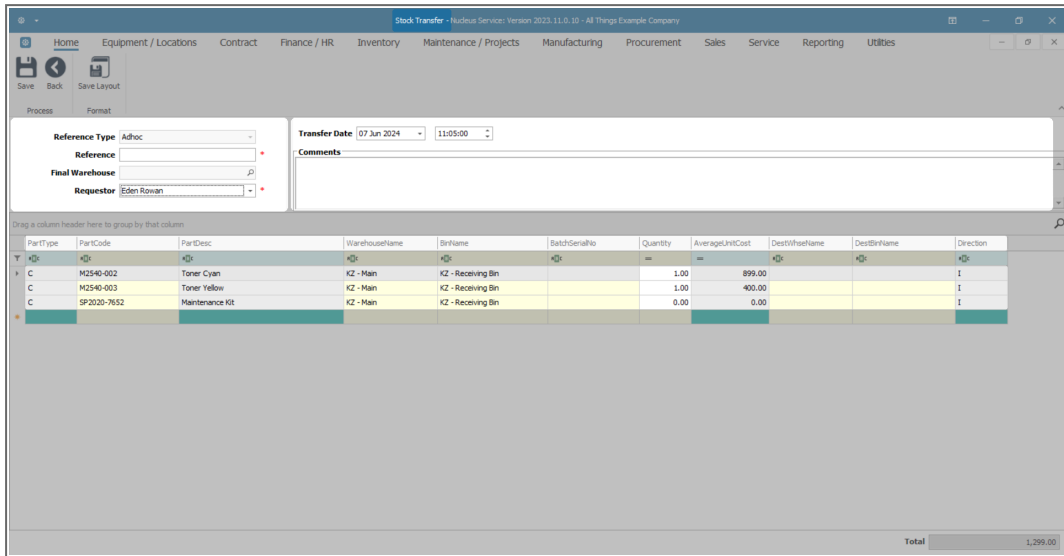


- You can see in this image that all the item lines have been copied to the **Selected Items** frame.
- Either right click on any of the item lines to display the **Process** menu and click on **Transfer - Transfer the selected batch item**.
- **Or**, click on **Stock Transfer**.

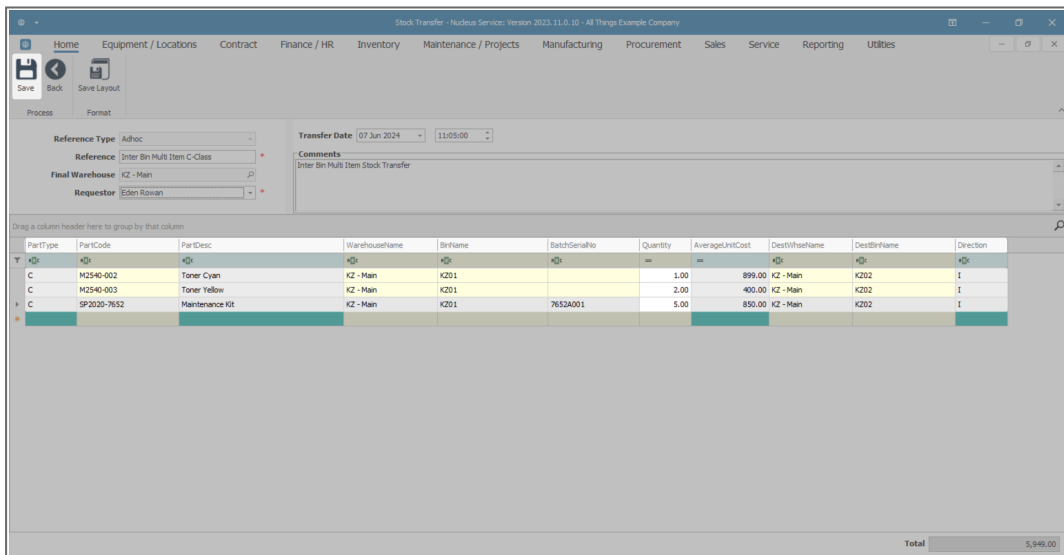


- The **Stock Transfer** screen will be displayed.

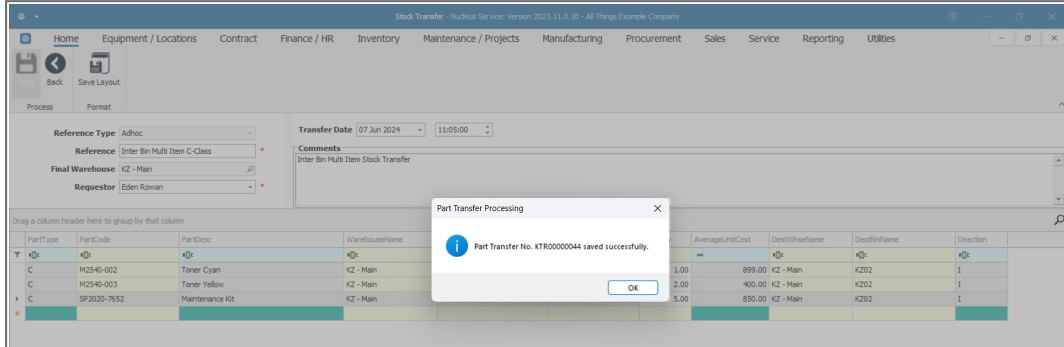
- In this image, you can see that all the selected item lines have been brought across to this screen.



- Follow the same process as for the [Single Item Line Stock Transfer](#) to complete the details for each item line in the **Stock Transfer** screen.
- When you have finished adding the details, click on **Save**.

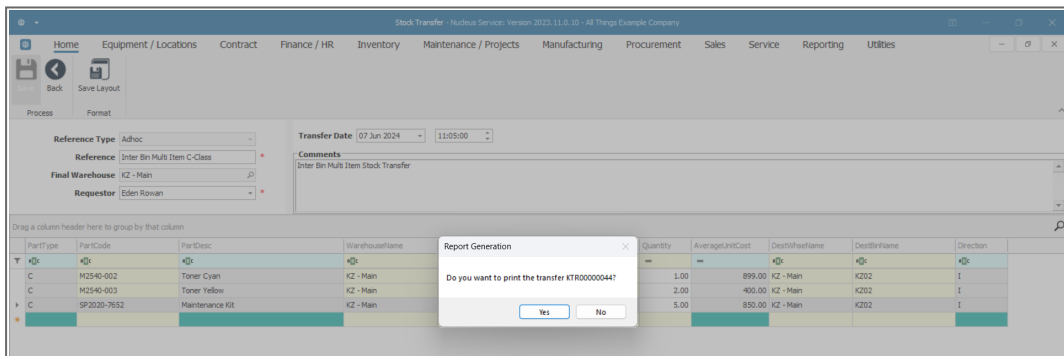


- A **Part Transfer Processing** message box will pop up informing you that -
  - **Part Transfer No. [ ] saved successfully.**
- Click on **OK**.



## Print C-Class Multi Item Transfer

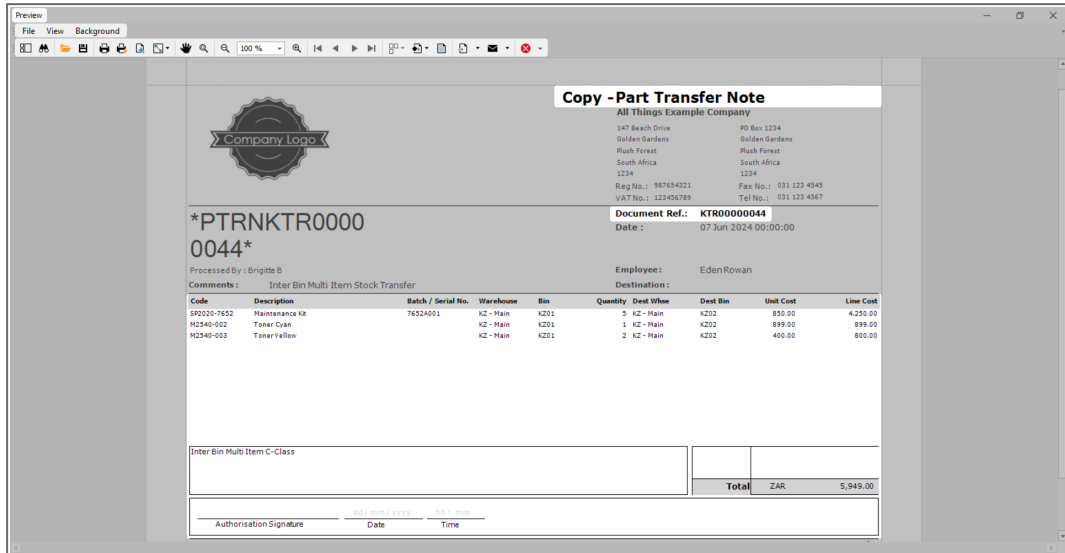
- A **Report Generation** message will pop up, asking -
  - **Do you want to print the transfer [ ]?**
- Click on **Yes**.



The **Report Preview** screen will be displayed.

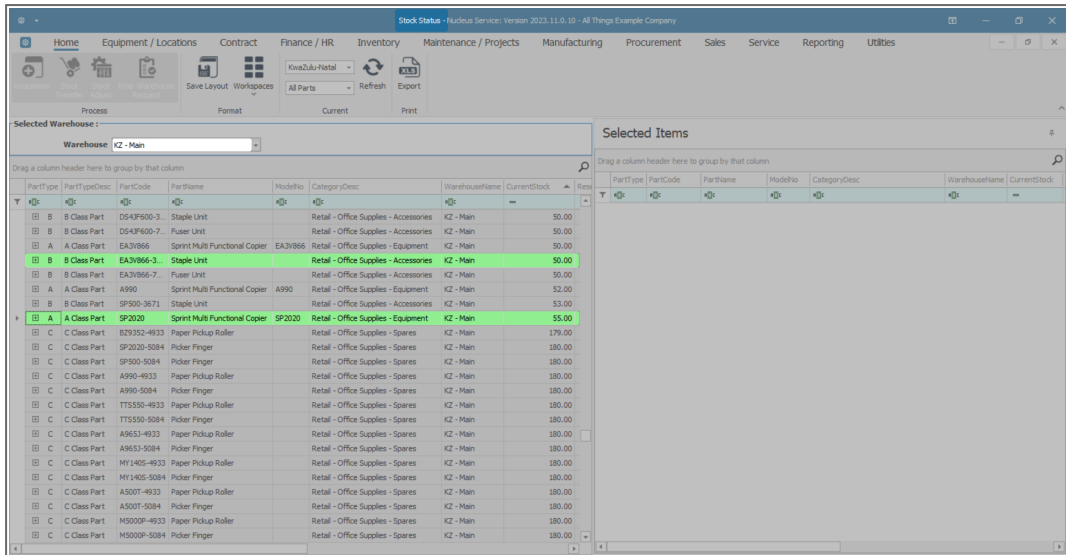
- In this image you can see that all the item lines have pulled through to the **Part Transfer Note**.
- From here you can **View, Print, Export** or **Email** the document.

- Note that the items are being transferred from the **original source bin** to the **selected destination bin**.
- **Close the Report Preview** screen when done.

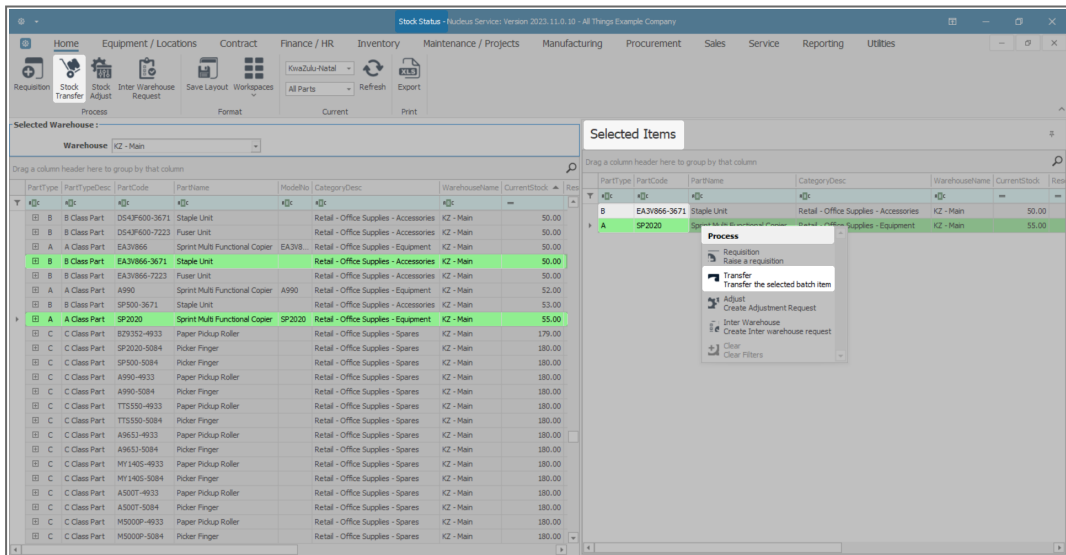


## A/B-CLASS SINGLE OR MULTIPLE ITEM STOCK TRANSFER

- You will follow **almost** exactly the same process as for a [Single C-Class Item Stock Transfer](#) and a [Multi-Class Item Stock Transfer](#) to transfer either a single **A** or **B**-Class item or multiple **A** or **B**-Class items.
- The only differences are the details in the **BatchSerialNo**, **Quantity** and **Average Unit Cost** fields in the **Stock Transfer** screen.
- In the **Selected Warehouse** frame, Select the **A** and/or **B**-Class **item(s)** to be transferred.



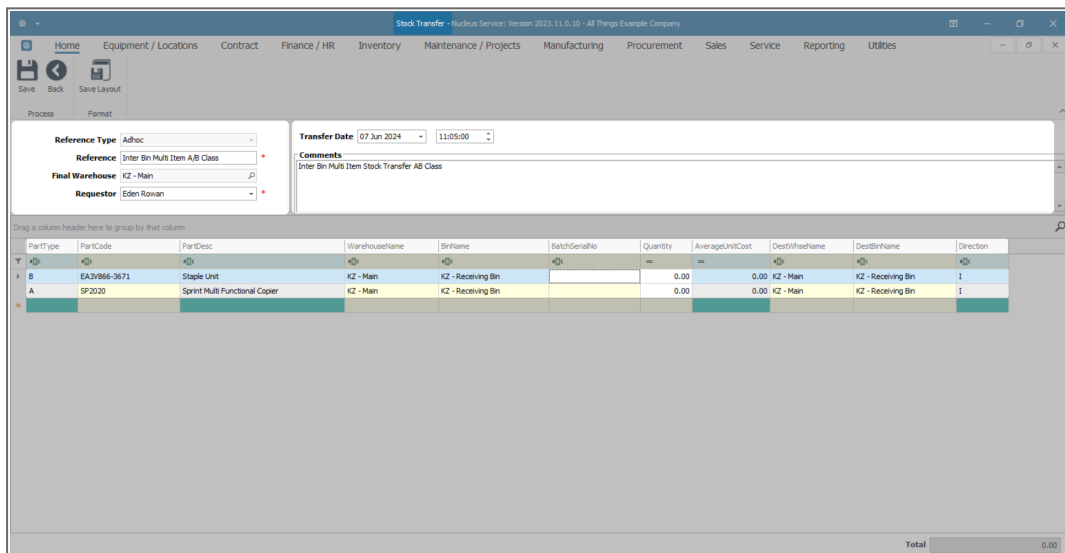
- Drag and drop the **A** and / or **B-Class** item line(s) to the **Selected Items** frame.
- Either **right click** on any of the lines to display the **Process** pop up menu.
- Select **Transfer - Transfer the selected batch item from the list.**
- Or, click on **Stock Transfer.**



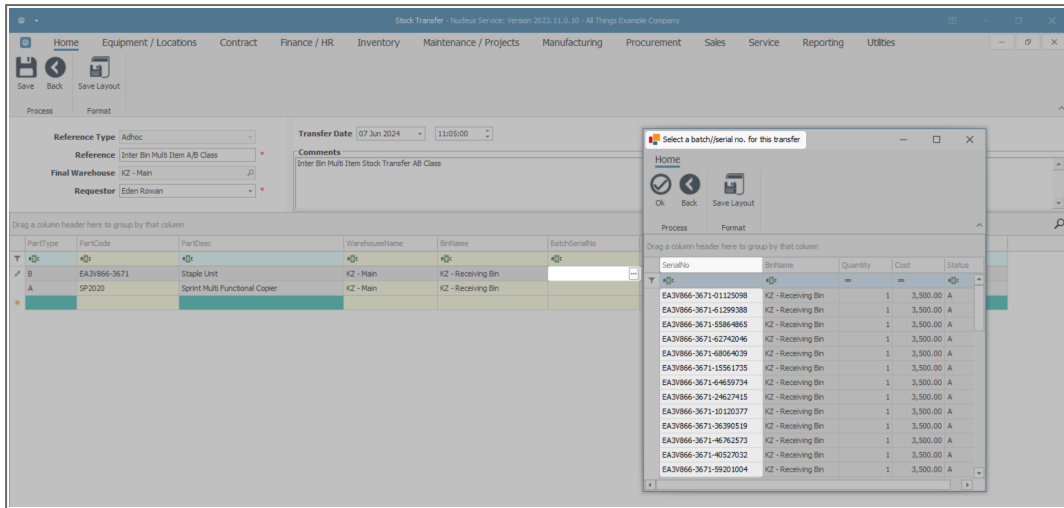
- Add the details to the **References** frame as explained in the **Single Item Line Stock Transfer** process above.
- You will note that:
  - The **Quantity** field displays **0**. (Unlike when **C-Class** items are being transferred, where this field is initially populated with the entire amount of the items available in the selected warehouse bin).
  - The **Average Unit Cost** field displays **0**.

## SELECT SERIAL NO FOR A / B-CLASS ITEM

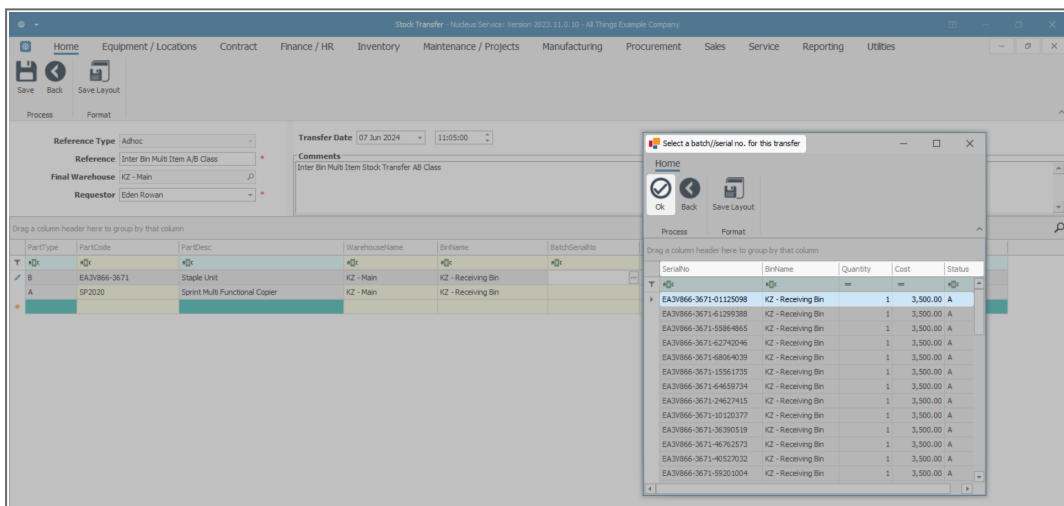
- Click in the **BatchSerialNo** field.



- An **ellipsis** button will be revealed. Click on this button to display the **Select a batch//serial no. for this transfer** pop up screen.
- You will see that you will only be able to select **one** (Quantity) item at a time.
- As this is an **A** or **B-Class** item, you will see that this screen lists the **Serial Nos.**

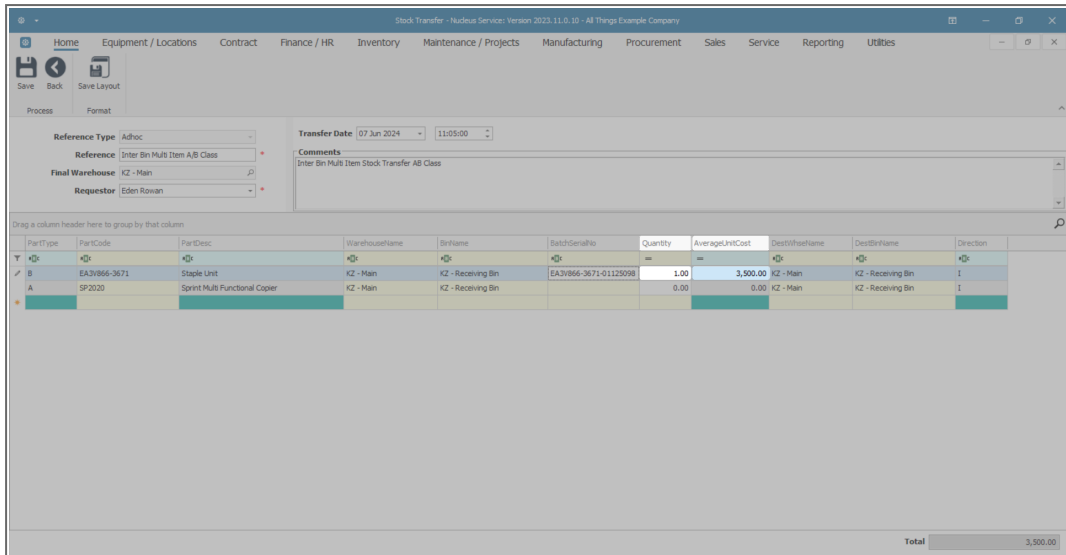


- Click on the **row selector** in front of the **item** you wish to transfer.
- Click on **Ok**.

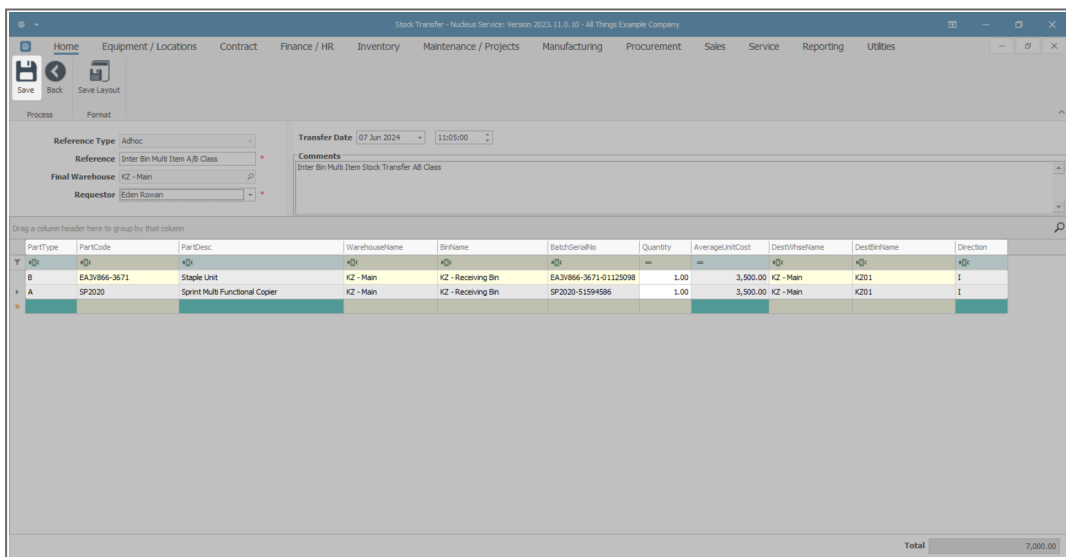


- The **Quantity** field will now populate with **1**, (only **one A or B**-Class item can be selected at a time), and the **Average Unit Cost** field will now populate according to the cost of the selected serial no.



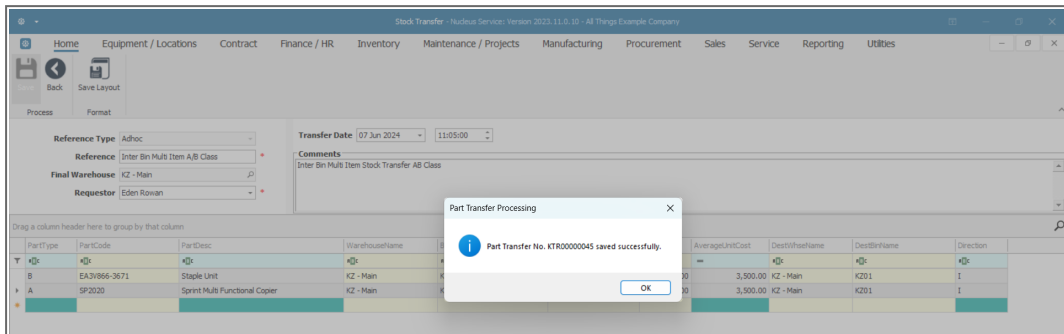


- Repeat the process until each serial no. has been selected as required.
- If not already populated (if, for example, there is **more than one** bin in the destination warehouse), then select the **Destination Bin** name at this point.
- Click on **Save**.



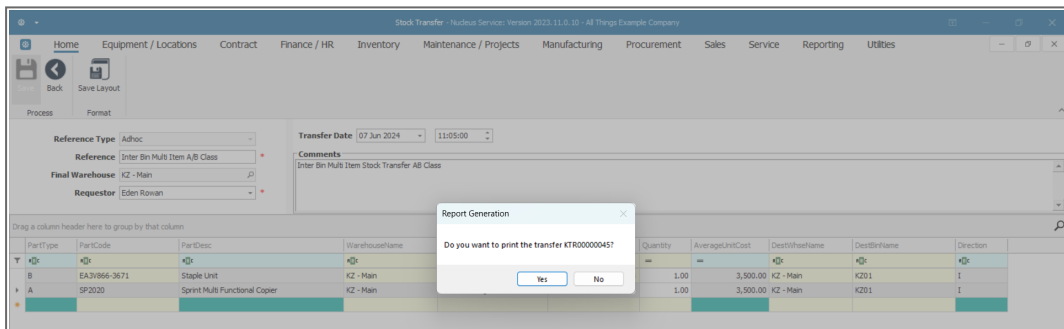
- A **Part Transfer Processing** message box will pop up informing you that;

- Part Transfer No. [ ] saved successfully.
- Click on **OK**.



## PRINT A / B-CLASS SINGLE / MULTI ITEM TRANSFER

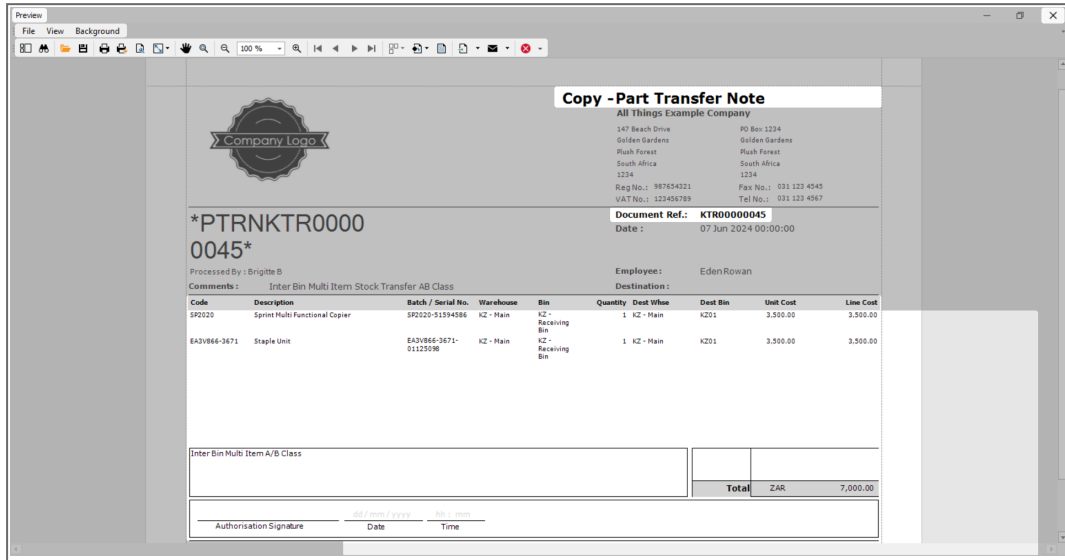
- A **Report Generation** message box will pop up asking -
  - Do you want to print the transfer [ ]?
- Click on **Yes**.



The **Report Preview** screen will open.

- You will note that the selected **serial** numbers are recorded on the note and that the items are being transferred:
  - From the **source warehouse**: KZ - Main, and **bin**: KZ Receiving.
  - To the **destination warehouse**: KZ - Main, and **bin**: KZ01.

- From here you can **View, Print, Export** or **Email** the Part Transfer Note.
- **Close** the **Report Preview** screen when done.



- You will return to the **Stock Status** screen.

Navigate to **Transactions** in the Inventory > Parts **Links** panel to view transactional information relating to the transferred part(s).

MNU.037.006

