

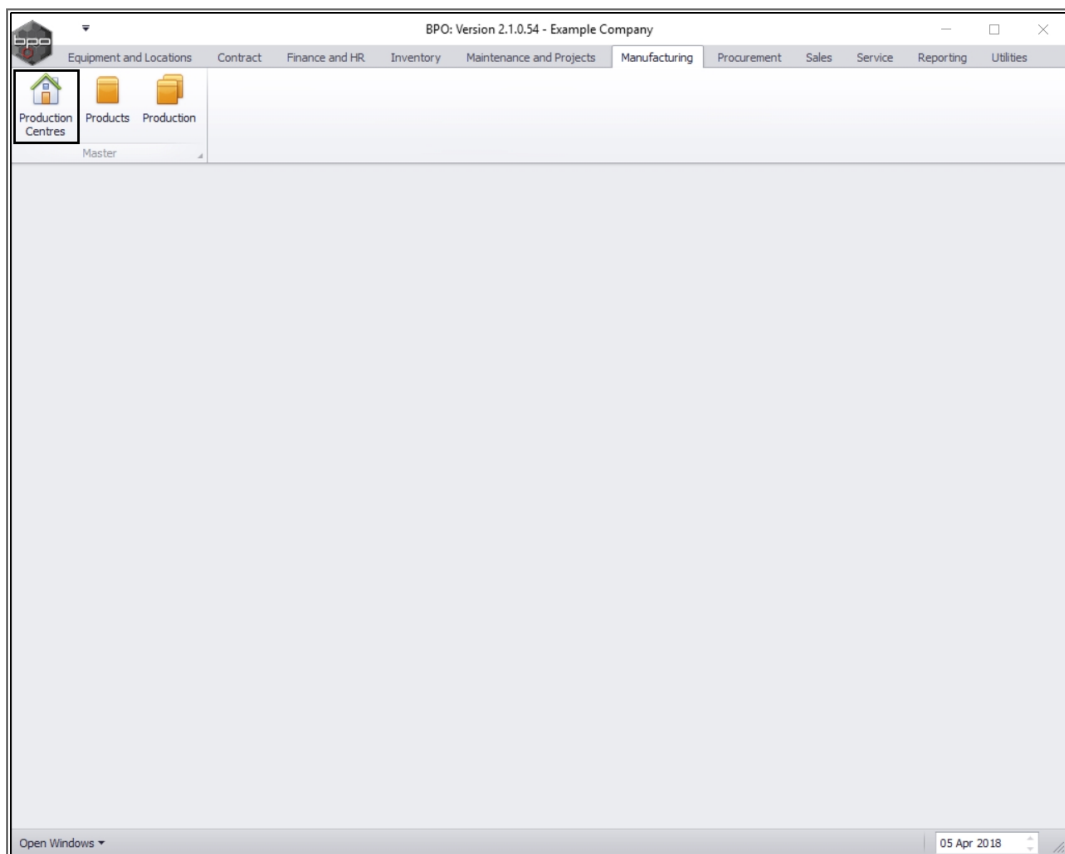
We are currently updating our site; thank you for your patience.

## MANUFACTURING

### PRODUCTION CENTRES – ADD A PRODUCTION CENTRE

A **production centre** needs to be set up in order to determine the relevant site, and general ledger account codes for transactional processing.

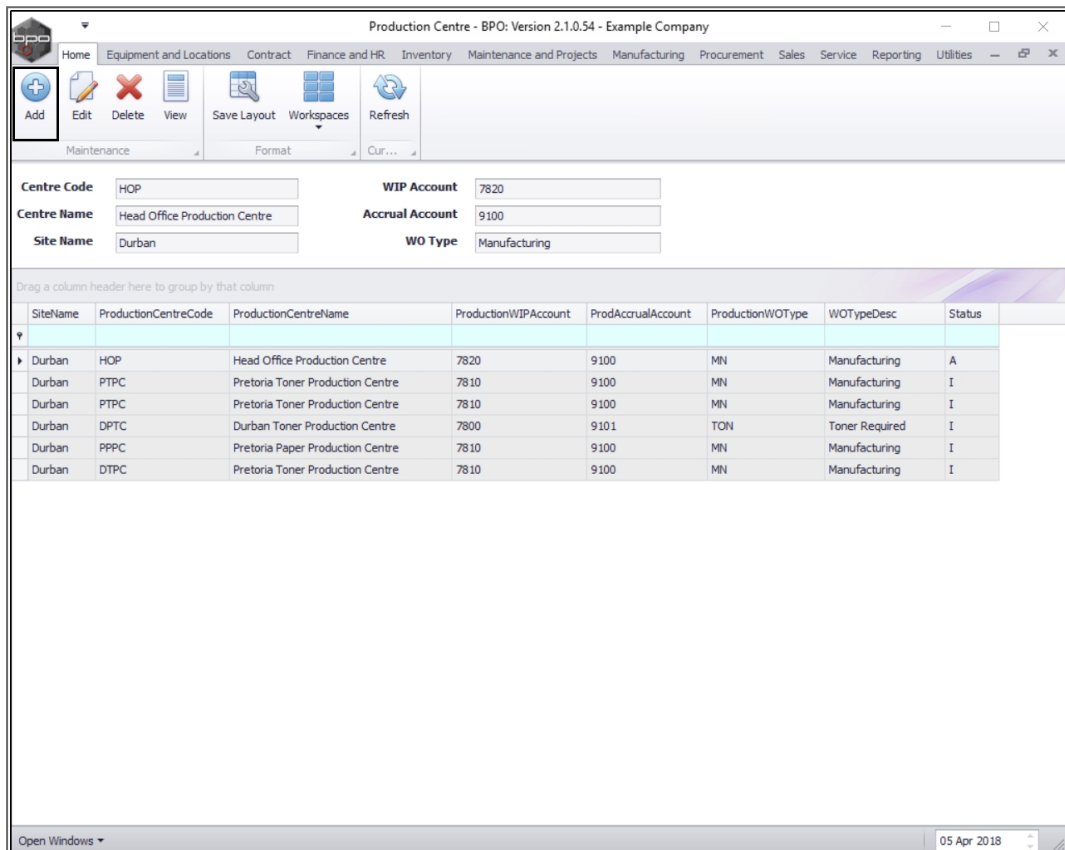
**Ribbon Access:** Manufacturing > Production Centres



- The **Production Centre** listing screen will be displayed.
- Here you can view a list of all the production centres currently set up on the system.

## ADD A PRODUCTION CENTRE

- Click on **Add**.

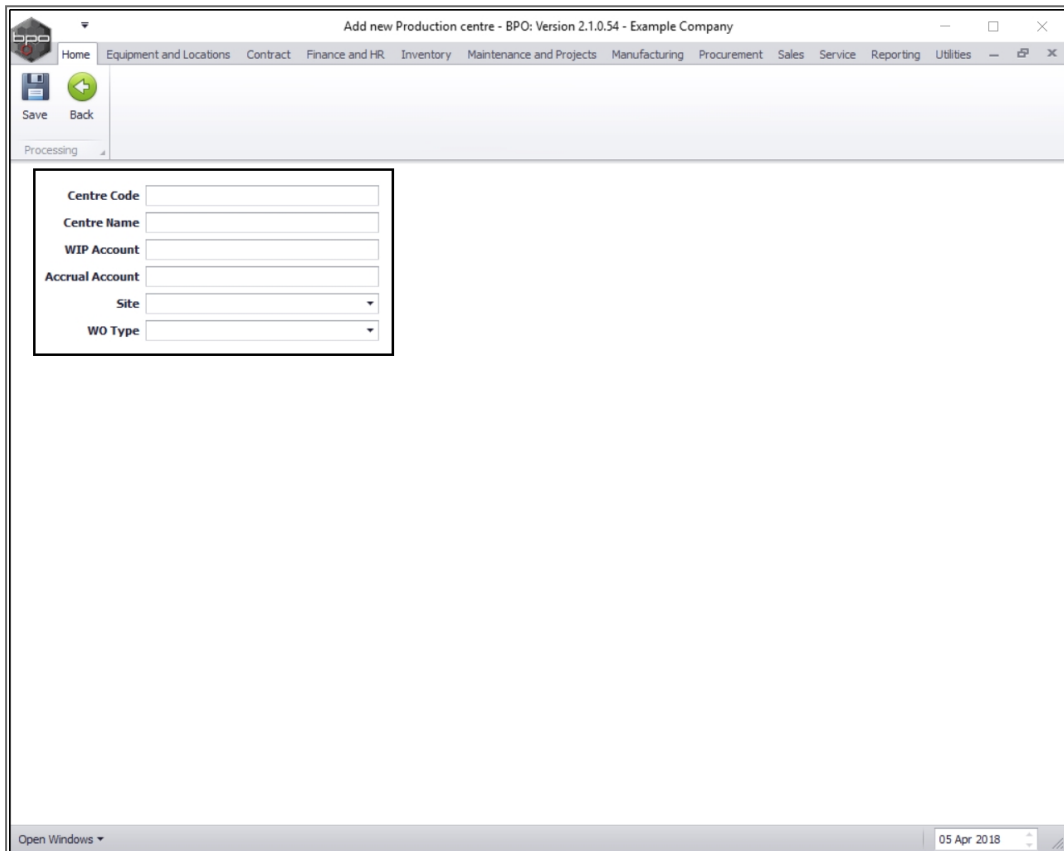


- The **Add New Production Centre** screen will be displayed.

## ADD PRODUCTION CENTRE DETAILS

- **Centre Code:** Click in this text box and type in a **centre code**.
- **Centre Name:** Click in this text box and type in a **centre name**.

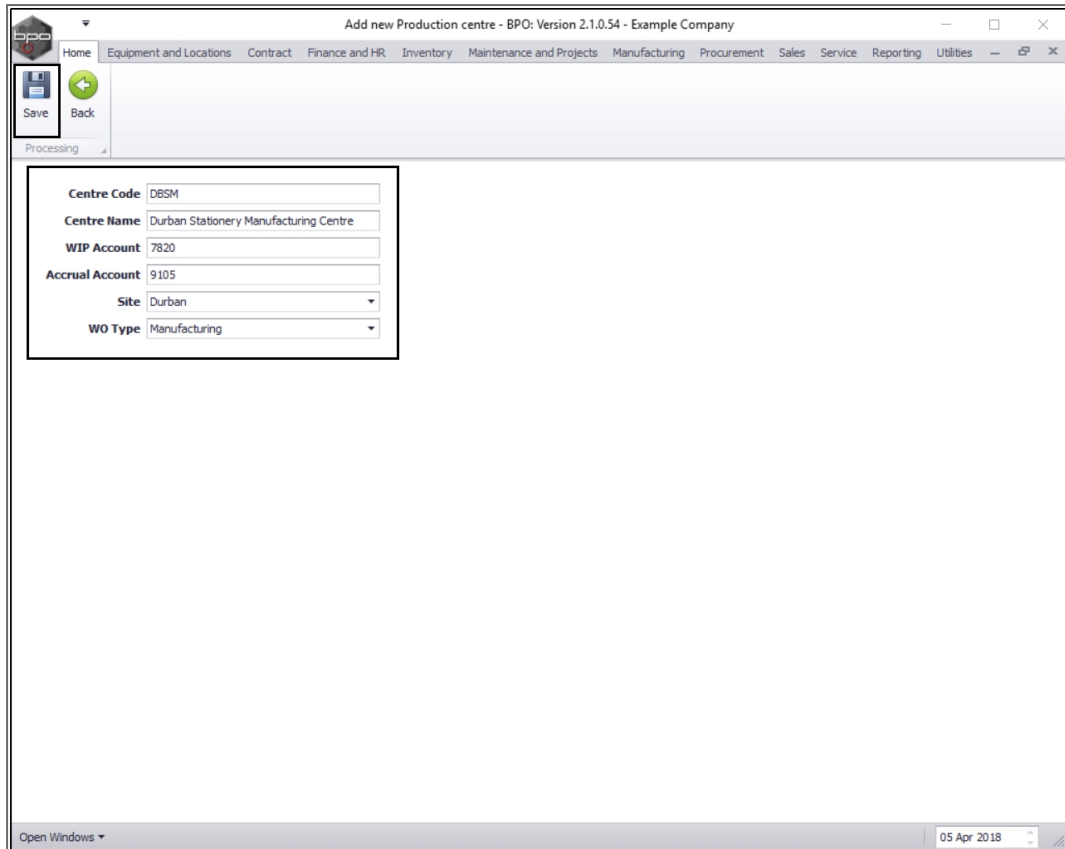
- **WIP Account:** Click in this text box and type in the **production work in progress** general ledger account code.
- **Accrual Account:** Click in this text box and type in the **production accrual** general ledger account code
- **Site:** Click on the drop-down arrow and select from the list, the **site** for this production centre.
- **WO Type:** Click on the drop-down arrow and select from the list, the **work order type** for this production centre.



Centre Code	<input type="text"/>
Centre Name	<input type="text"/>
WIP Account	<input type="text"/>
Accrual Account	<input type="text"/>
Site	<input type="text"/>
WO Type	<input type="text"/>

## SAVE DETAILS

- When you have finished adding the new production centre details, click on **Save**.



Centre Code: DBSM

Centre Name: Durban Stationery Manufacturing Centre

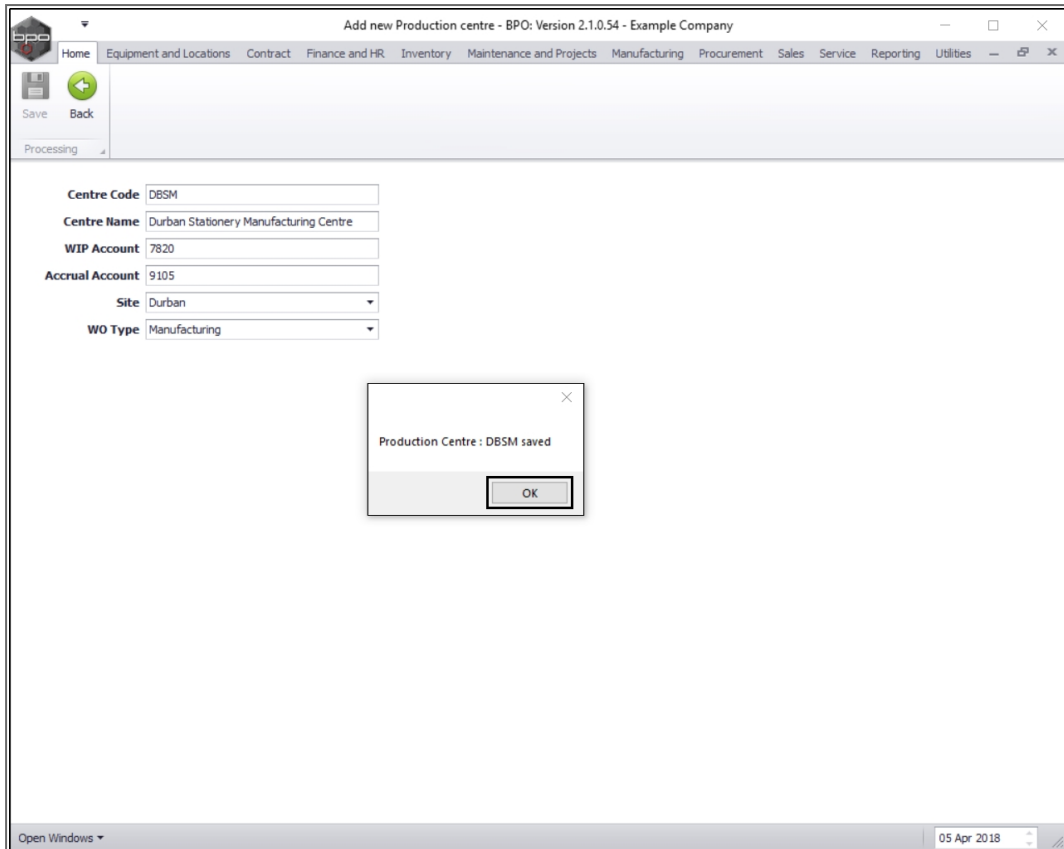
WIP Account: 7820

Accrual Account: 9105

Site: Durban

WO Type: Manufacturing

- A message box will pop up informing you that;
  - **Production Centre: [ ] saved.**
- Click on **OK**.



## VIEW NEW PRODUCTION CENTRE

- The new production centre details will be **saved** and you will return to the **Production Centre** listing screen.
- Here you can view the new production centre details.

Production Centre - BPO: Version 2.1.0.54 - Example Company

Home | Equipment and Locations | Contract | Finance and HR | Inventory | Maintenance and Projects | Manufacturing | Procurement | Sales | Service | Reporting | Utilities

Maintenance | Format | Cur...

**Centre Code** DBSM      **WIP Account** 7820  
**Centre Name** Durban Stationery Manufacturing C      **Accrual Account** 9105  
**Site Name** Durban      **WO Type** Manufacturing

Drag a column header here to group by that column

SiteName	ProductionCentreCode	ProductionCentreName	ProductionWIPAccount	ProdAccrualAccount	ProductionWOType	WOTypeDesc	Status
Durban	HOP	Head Office Production Centre	7820	9100	MN	Manufacturing	A
Durban	PTPC	Pretoria Toner Production Centre	7810	9100	MN	Manufacturing	I
Durban	PTPC	Pretoria Toner Production Centre	7810	9100	MN	Manufacturing	I
Durban	DPTC	Durban Toner Production Centre	7800	9101	TON	Toner Required	I
Durban	PPPC	Pretoria Paper Production Centre	7810	9100	MN	Manufacturing	I
Durban	DTPC	Pretoria Toner Production Centre	7810	9100	MN	Manufacturing	I
Durban	DDPC	Durban Drum Production Centre	7820	9105	MN	Manufacturing	I
Durban	DBSM	Durban Stationery Manufacturing Centre	7820	9105	MN	Manufacturing	A

Open Windows | 05 Apr 2018

MNU.051.003