

We are currently updating our site; thank you for your patience.

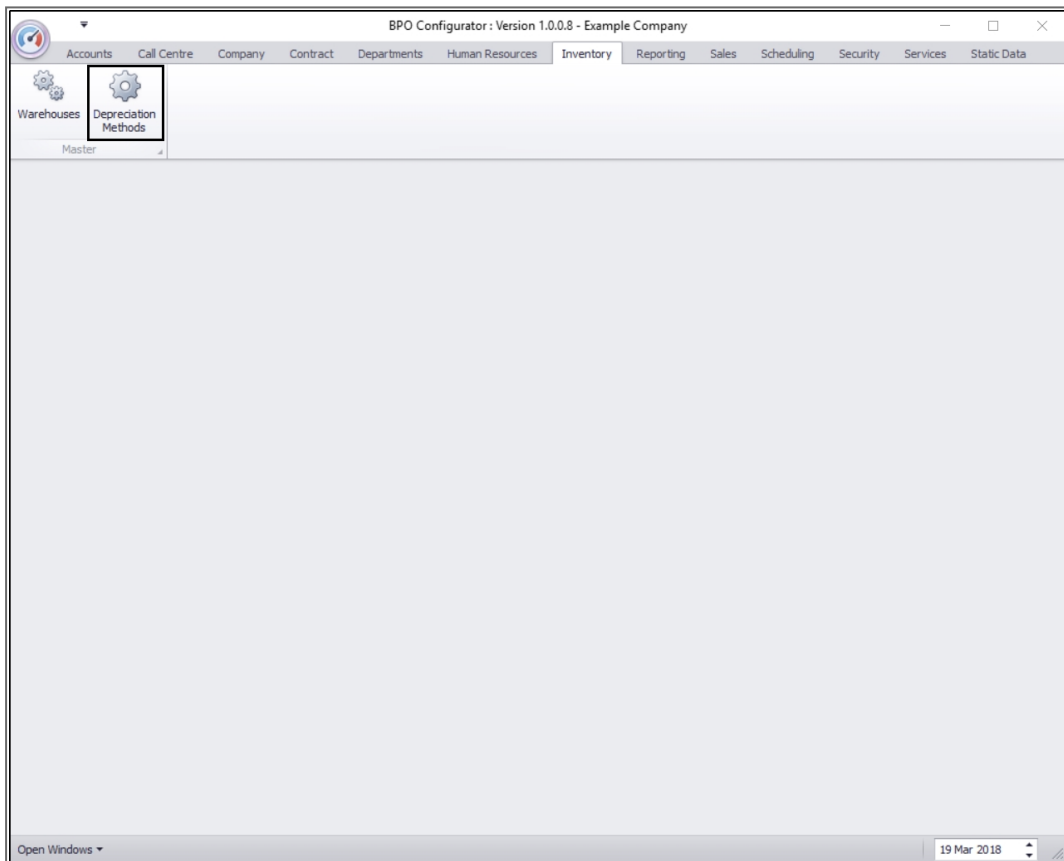
INVENTORY

DEPRECIATION METHODS

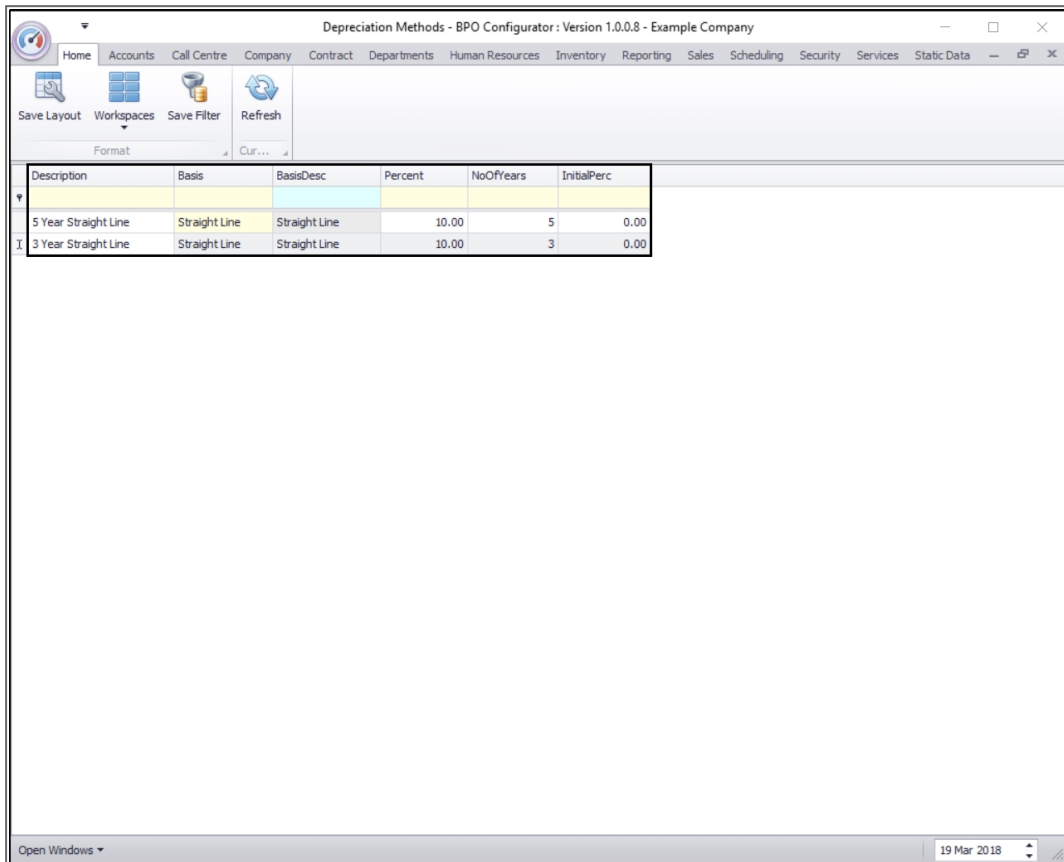
Use this configuration screen to set up a **Depreciation** and/or **Wear & Tear Method**.

Both the **Depreciation and the Wear and Tear** methods can be linked to the **inventory definition**.

Ribbon Access: Configurator > Inventory > Depreciation Methods

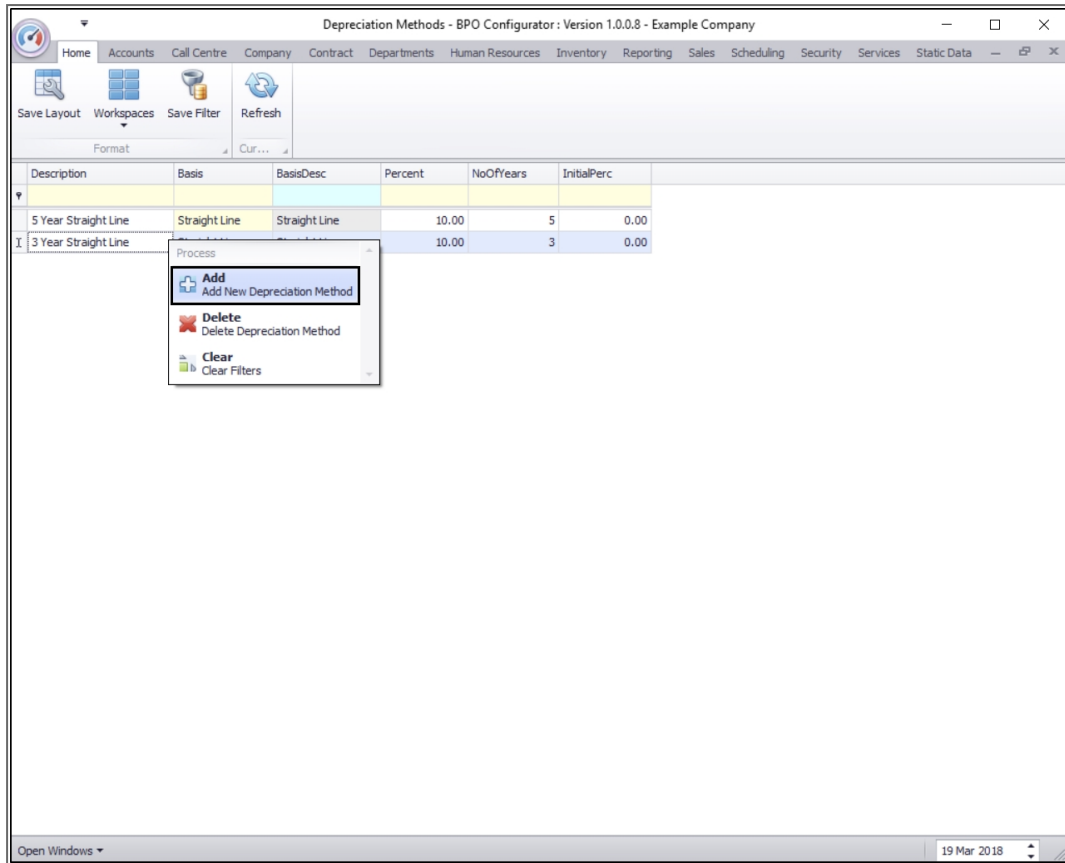


- The **Depreciation Methods** listing screen will be displayed.
 - Here you can view all the depreciation methods currently on the system.



Description	Basis	BasisDesc	Percent	NoOfYears	InitialPerc
5 Year Straight Line	Straight Line	Straight Line	10.00	5	0.00
3 Year Straight Line	Straight Line	Straight Line	10.00	3	0.00

- **Right click** anywhere in any **row** in this screen.
- A **Process** menu will pop up.
- Click on **Add** - Add New Depreciation Method.



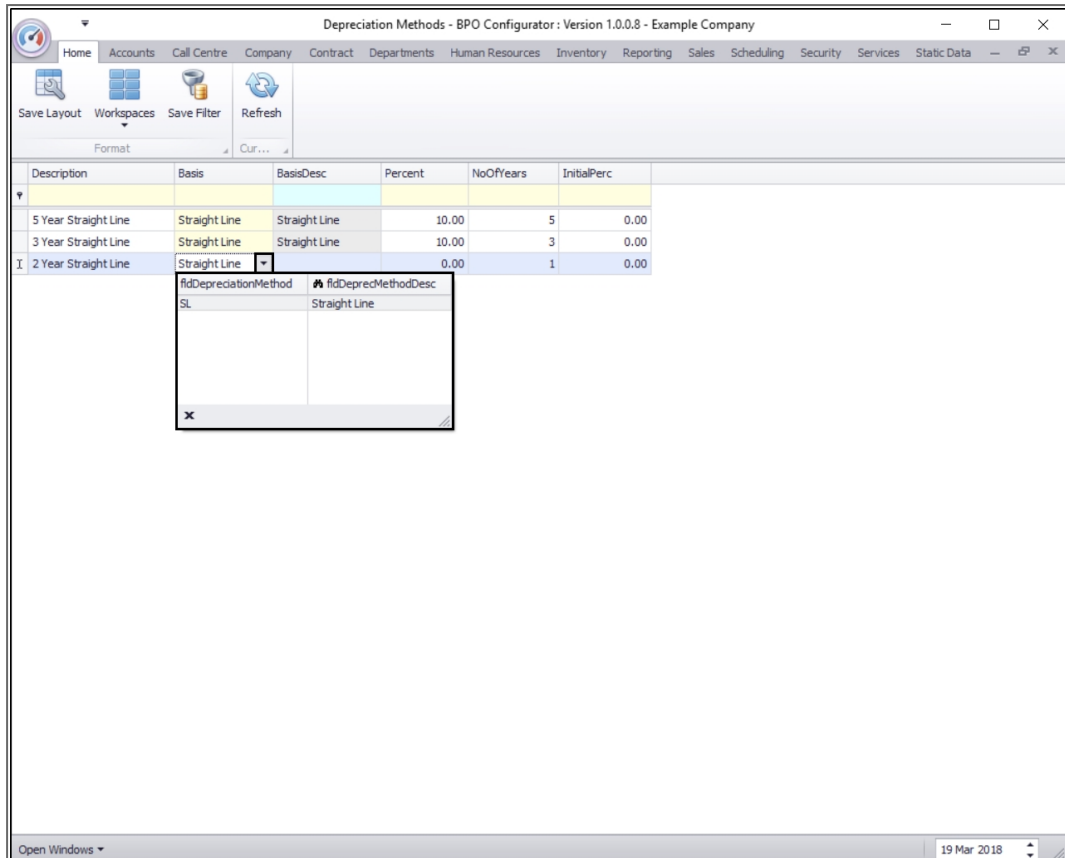
- A new row will appear in the data grid.
 - **Description:** Click in this text box and type in a description for the depreciation method.

The screenshot shows a software window titled "Depreciation Methods - BPO Configurator : Version 1.0.0.8 - Example Company". The window has a menu bar with options: Home, Accounts, Call Centre, Company, Contract, Departments, Human Resources, Inventory, Reporting, Sales, Scheduling, Security, Services, and Static Data. Below the menu bar is a toolbar with icons for Save Layout, Workspaces, Save Filter, and Refresh. A "Format" dropdown menu is also visible. The main area contains a table with the following data:

Description	Basis	BasisDesc	Percent	NoOfYears	InitialPerc
5 Year Straight Line	Straight Line	Straight Line	10.00	5	0.00
3 Year Straight Line	Straight Line	Straight Line	10.00	3	0.00
#	...				

At the bottom of the window, there is a status bar with "Open Windows" on the left and "19 Mar 2018" on the right.

- **Basis:** Click in this text box to reveal a drop-down arrow. Click on this arrow and select a depreciation method from the menu. e.g. Straight Line



- **Basis Desc:** This will now populate with the corresponding description according to the Basis selected in the previous step.
- **Values:** Use the Percentage and Initial Percentage columns if you want to specify the percentage to be depreciated
- **No. of Years:** Type in the number of years over which the depreciation / wear & tear will take place.
- Click on **Save**.

Depreciation Methods - BPO Configurator : Version 1.0.0.8 - Example Company

Home Accounts Call Centre Company Contract Departments Human Resources Inventory Reporting Sales Scheduling Security Services Static Data

Save Layout Workspaces Save Filter Refresh

Format Cur...

Description	Basis	BasisDesc	Percent	NoOfYears	InitialPerc
5 Year Straight Line	Straight Line	Straight Line	10.00	5	0.00
3 Year Straight Line	Straight Line	Straight Line	10.00	3	0.00
I 2 Year Straight Line	Straight Line	Straight Line	0.	0	0.00

Open Windows 19 Mar 2018

MNU.097.001