

We are currently updating our site; thank you for your patience.

CONTRACT

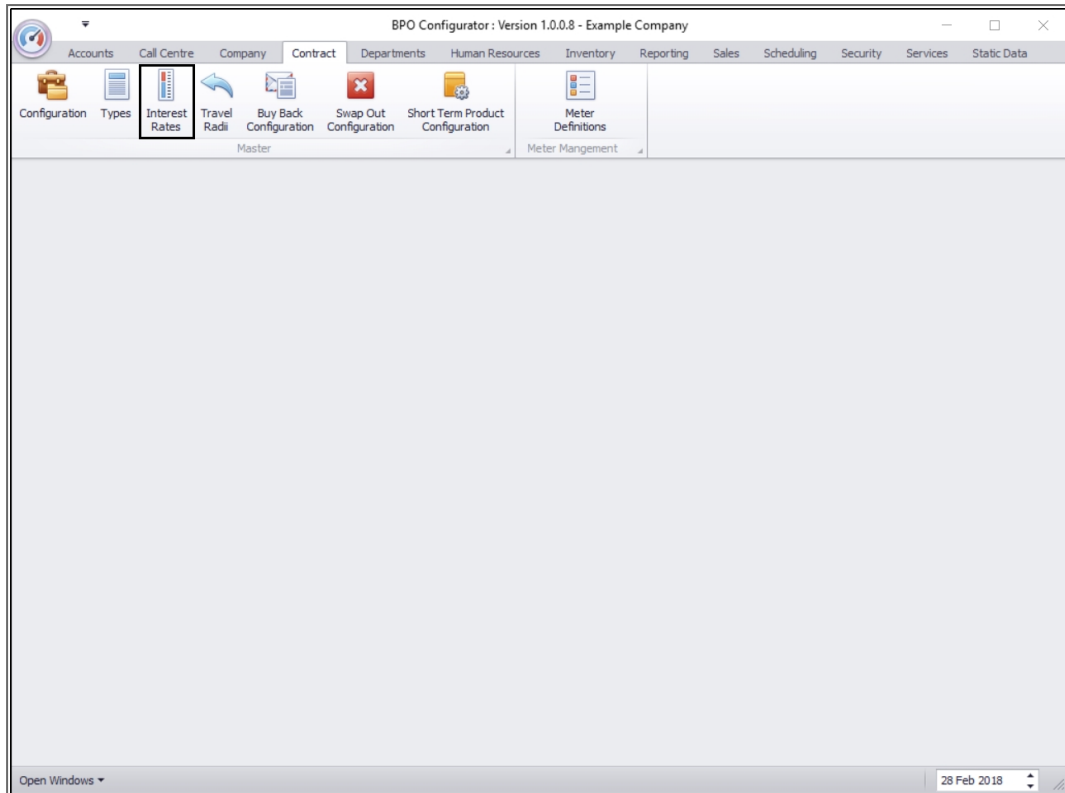
INTEREST RATE

The interest rate is the amount a lender charges a borrower and is a percentage of the principal—the amount loaned. The interest rate on a loan is typically noted on an annual basis known as the annual percentage rate (APR).

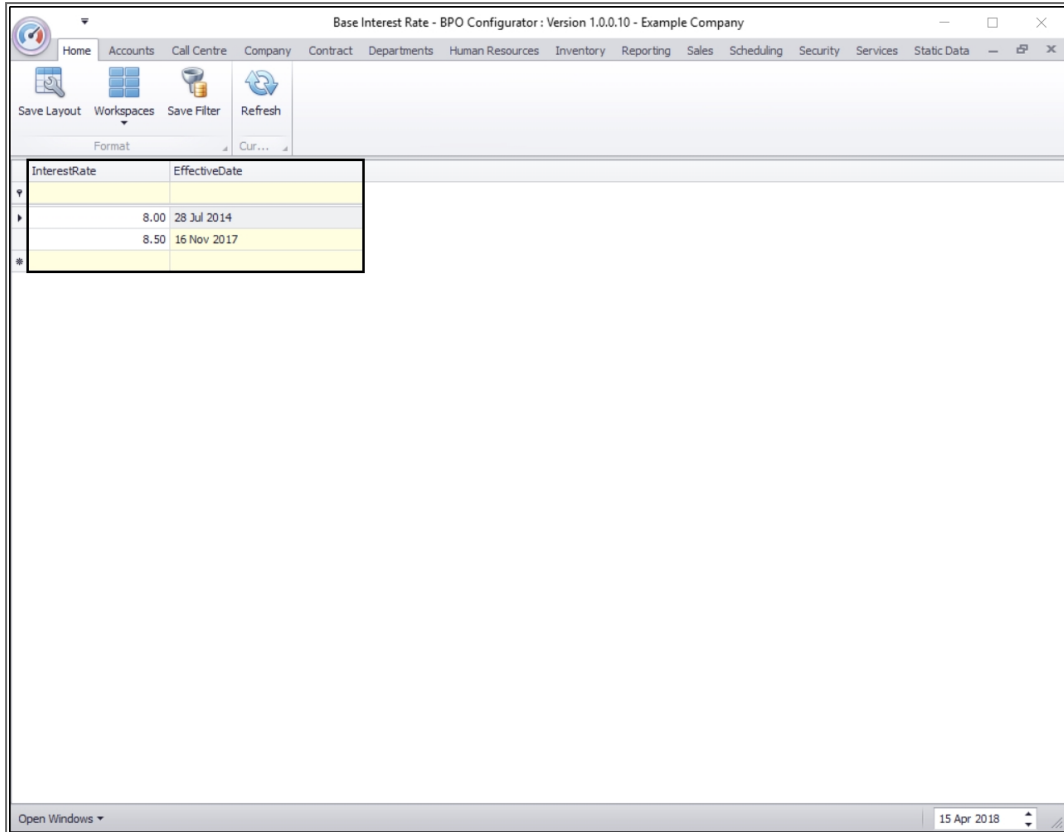
Version Compatibility¹

Ribbon Access: Configurator > Contract > Interest Rates

¹ Prior BPO2 v2.5.0.8. For BPO v2.5.0.8 or higher - refer to "[Update Interest Rate](#)" on page 2



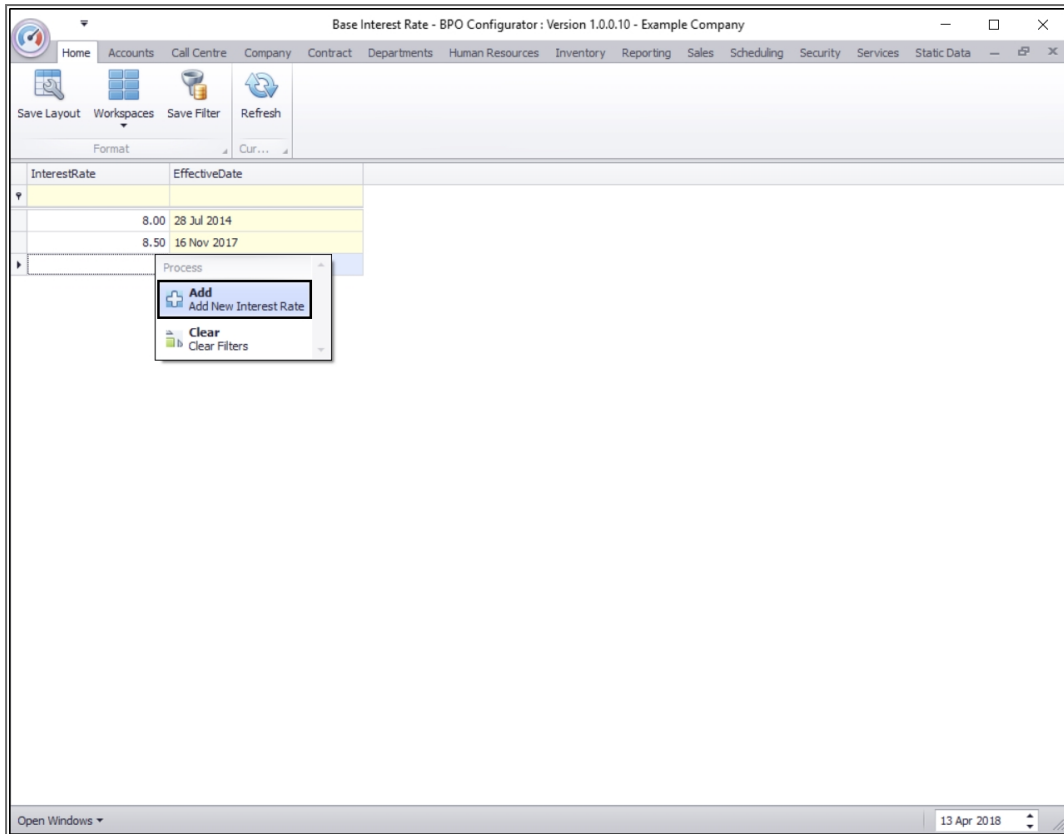
- The **Base Interest Rate** screen will be displayed.
 - Here you can view a list of the interest rates already set up on the system.



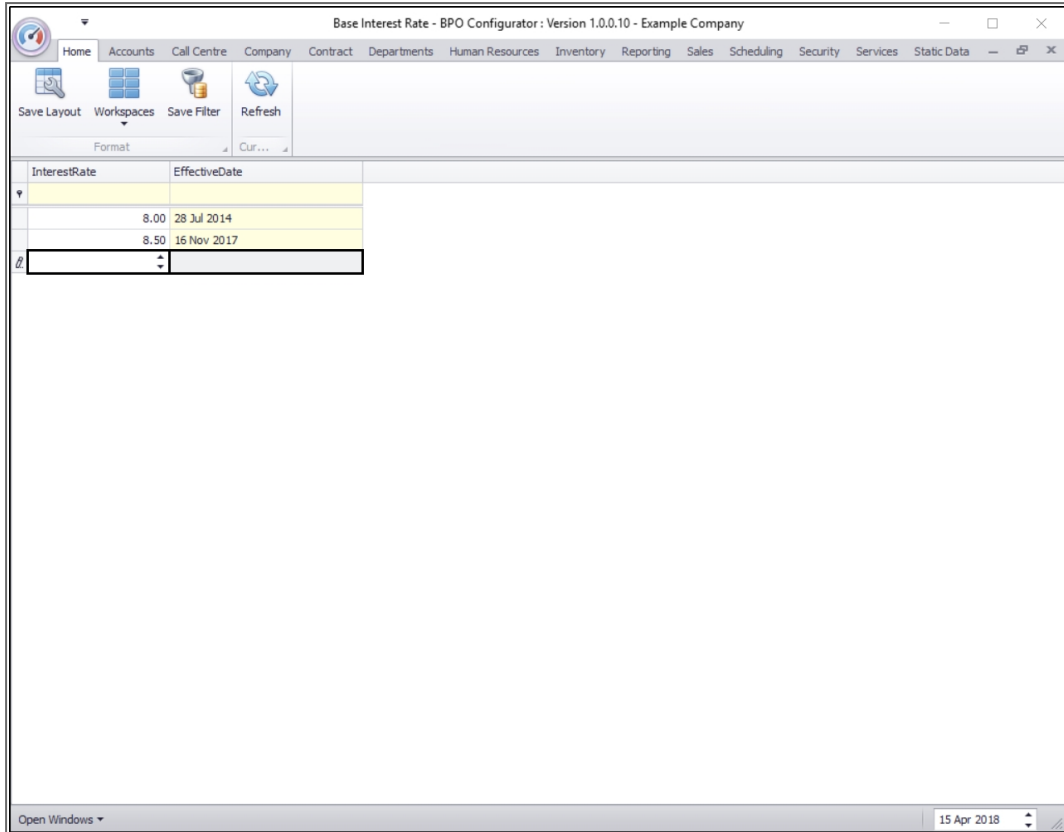
InterestRate	EffectiveDate
8.00	28 Jul 2014
8.50	16 Nov 2017

ADD INTEREST RATE

- **Right click** in any **row** of the Interest Rate data grid.
- A **Process** menu will pop up.
- Click on **Add** - Add New Interest Rate.

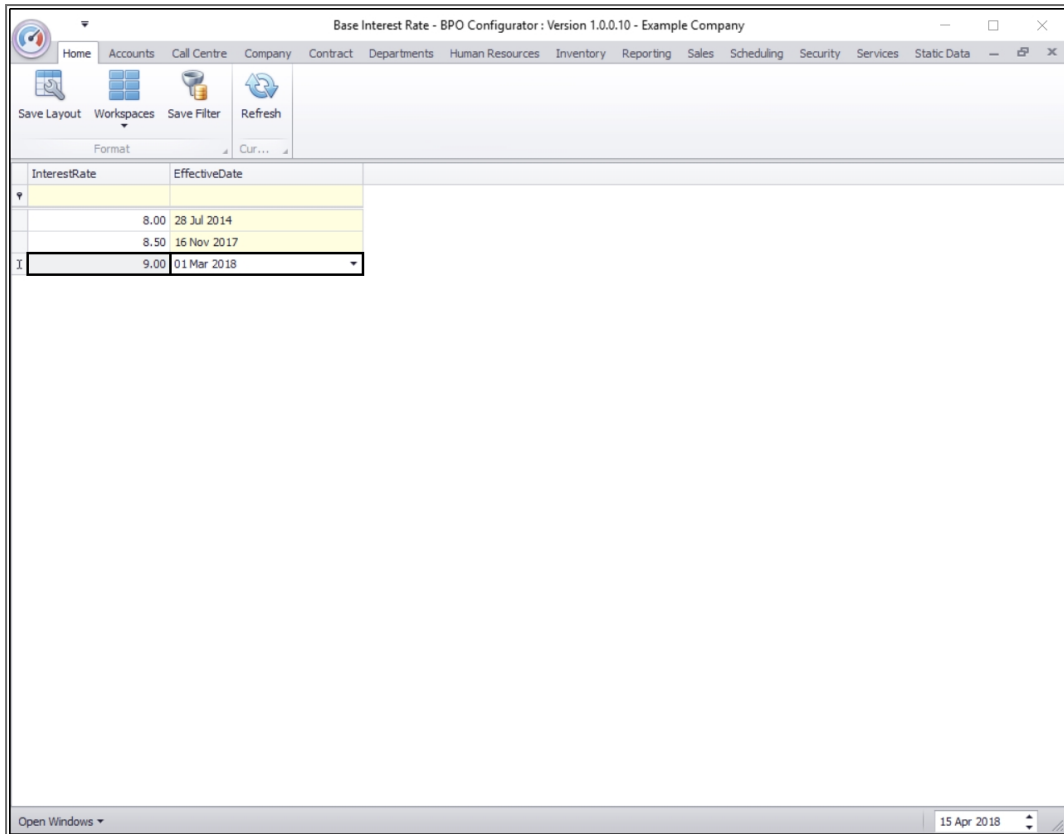


- **Interest Rate:** Click in the text box and either type in or use the arrow indicators to select the interest rate amount.
- **Effective Date:** Click in the text box and either type in or click on the drop-down arrow and use the calendar function to select the date from which you wish this rate to be effective.



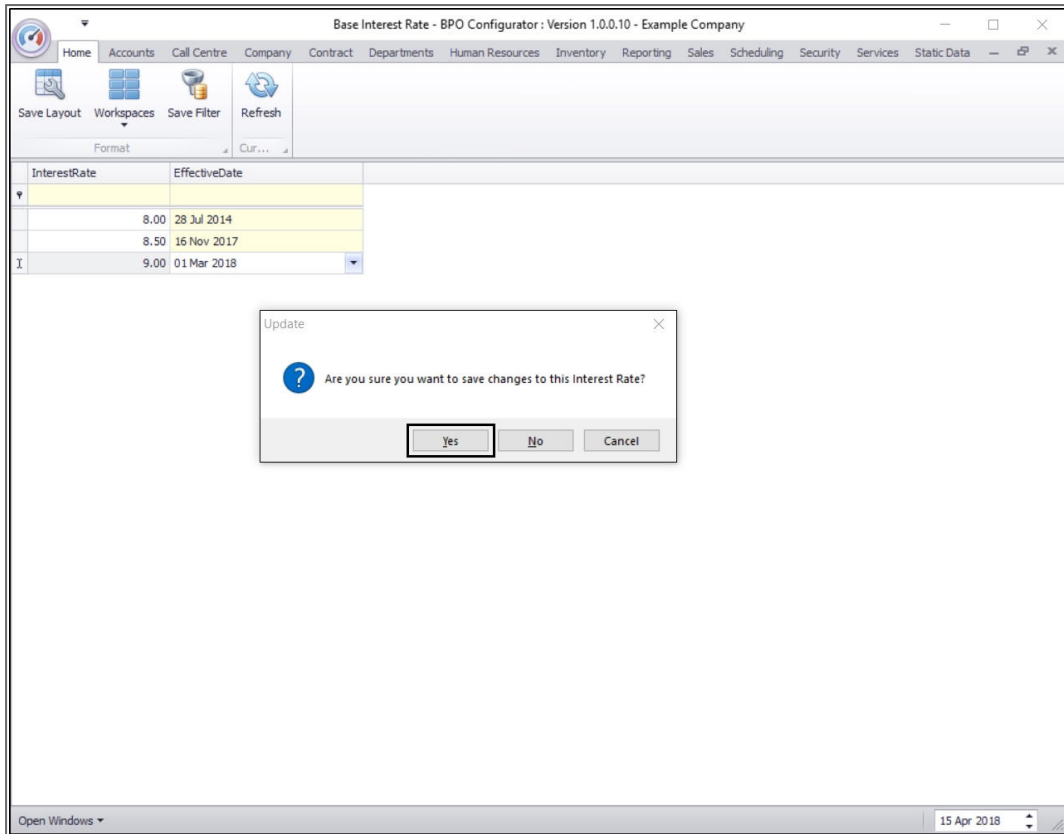
InterestRate	EffectiveDate
8.00	28 Jul 2014
8.50	16 Nov 2017

- When you have finished adding the new interest rate and effective date, press **Enter** on your keyboard.

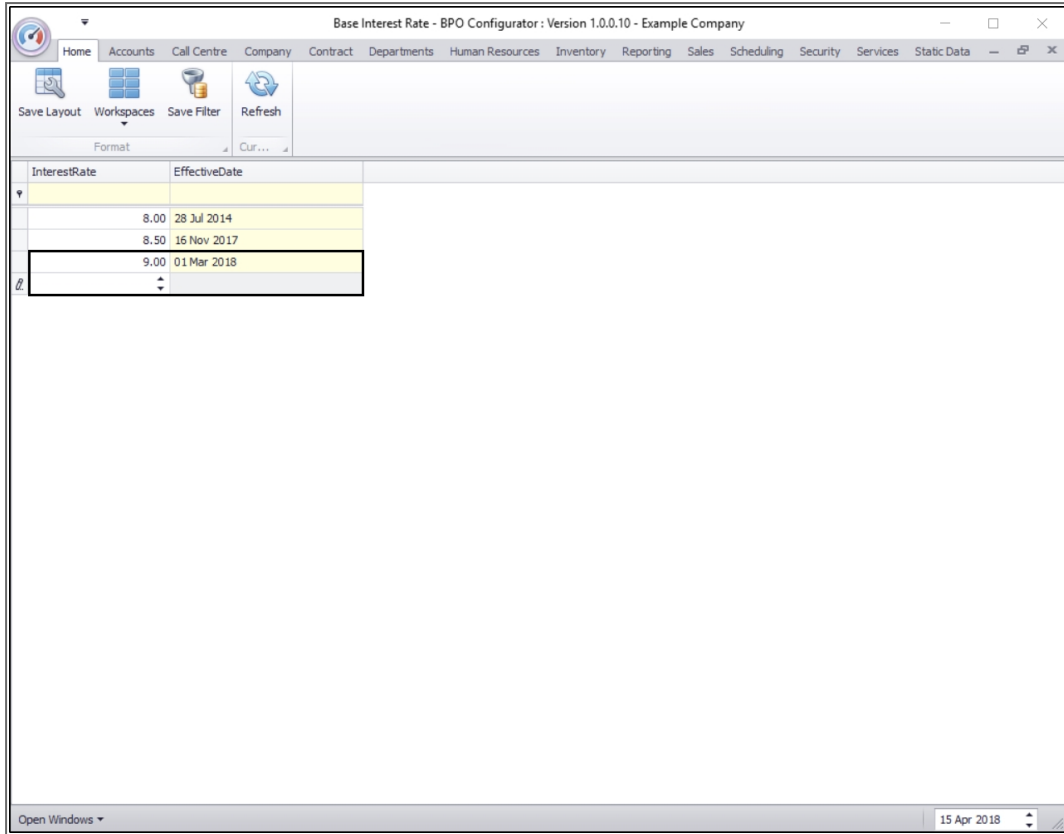


InterestRate	EffectiveDate
8.00	28 Jul 2014
8.50	16 Nov 2017
9.00	01 Mar 2018

- An **Update** message box will pop up asking;
 - **Are you sure you want to save changes to this Interest Rate?**
- Click on **Yes**.



- The new interest rate will be **saved** and a **new row** will be added to the Interest Rate data grid.



The screenshot shows a software window titled "Base Interest Rate - BPO Configurator : Version 1.0.0.10 - Example Company". The interface includes a menu bar with options like Home, Accounts, Call Centre, Company, Contract, Departments, Human Resources, Inventory, Reporting, Sales, Scheduling, Security, Services, and Static Data. Below the menu bar is a toolbar with icons for Save Layout, Workspaces, Save Filter, and Refresh. The main area contains a table with two columns: "InterestRate" and "EffectiveDate". The table has three rows of data, with the third row highlighted. A status bar at the bottom right shows the date "15 Apr 2018".

InterestRate	EffectiveDate
8.00	28 Jul 2014
8.50	16 Nov 2017
9.00	01 Mar 2018

Related Topics

- [Interest Rate Adjustment](#)
- [Rental Calculator](#)

MNU.141.005