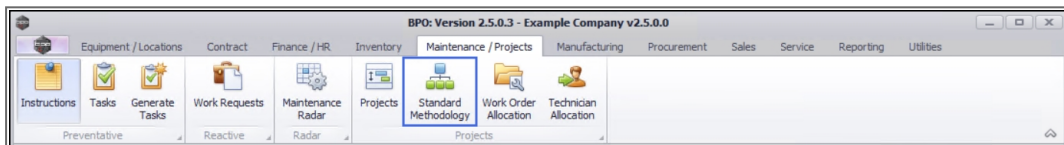


We are currently updating our site; thank you for your patience.

PROJECTS

STANDARD METHODOLOGY – LINK WORK INSTRUCTION(S)

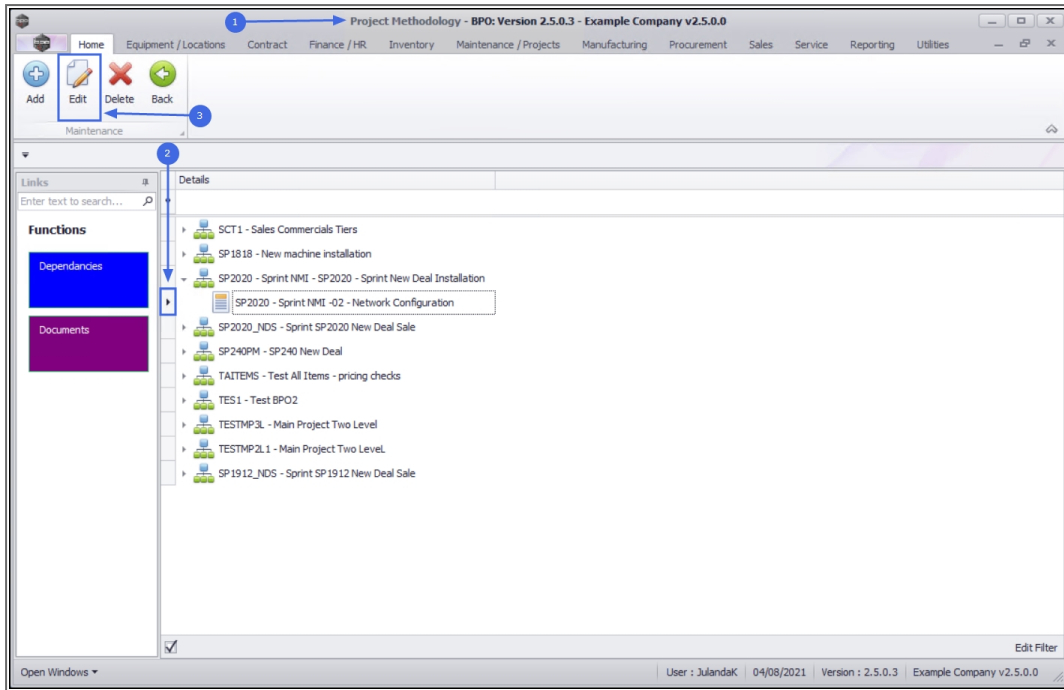
Ribbon Access: Maintenance / Projects > Standard Methodology




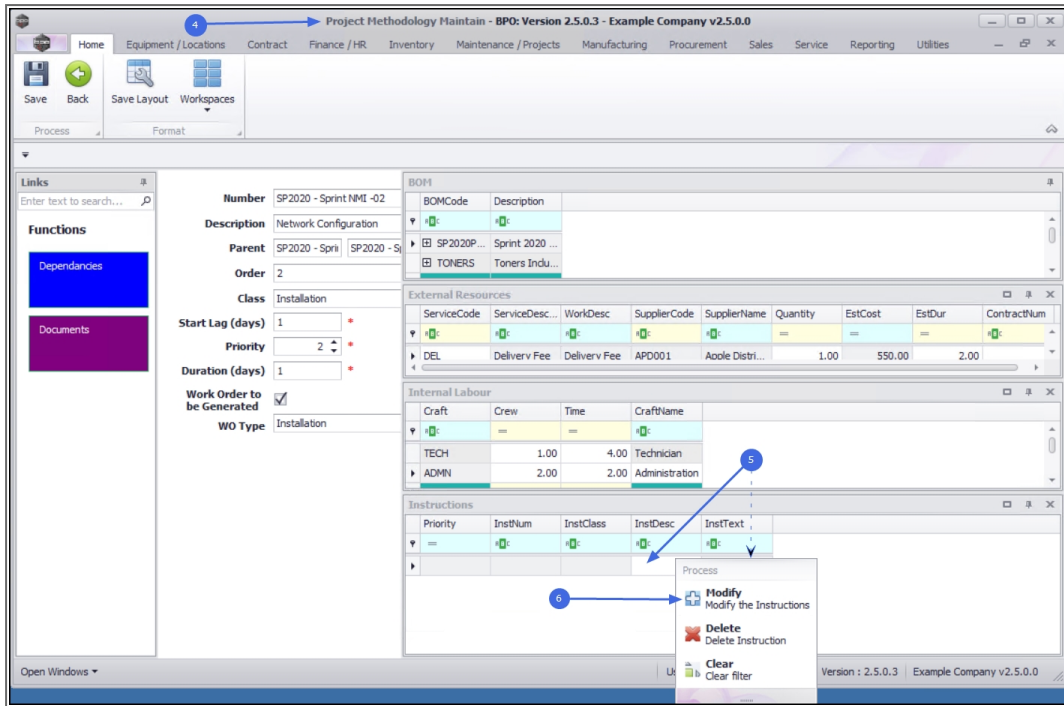
1. The **Project Methodology** screen will be displayed.
2. Click on the **row** of the **methodology layer** that you wish to link a **Work Instruction** to.
3. Click on **Edit**.



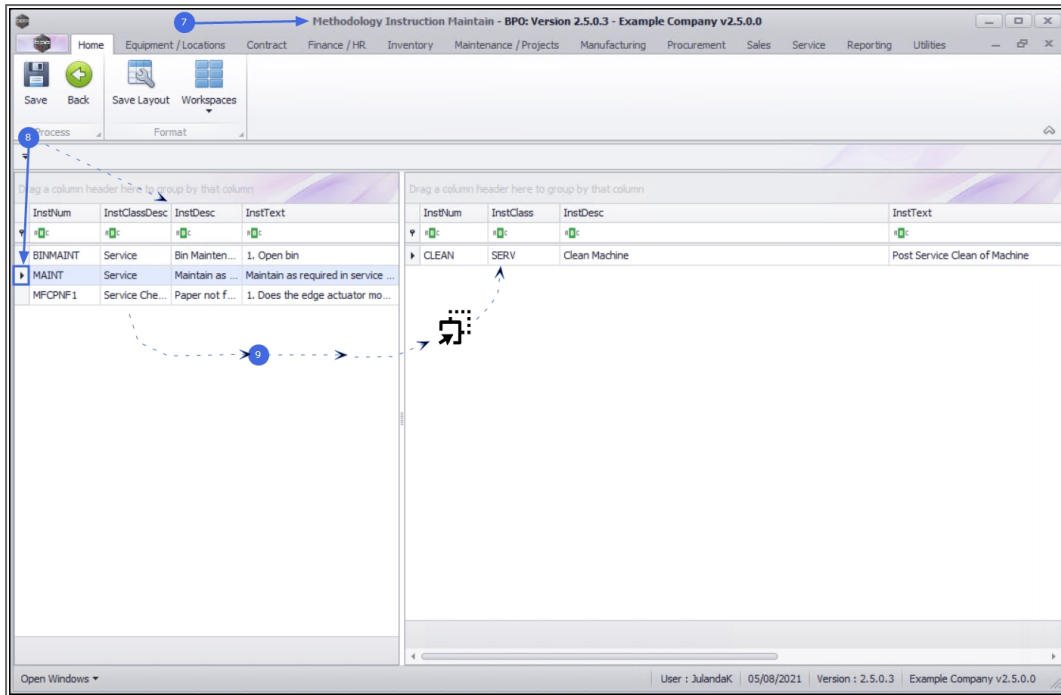
Short cut key: Right click to display the **Maintenance** menu list. Click on **Edit**.



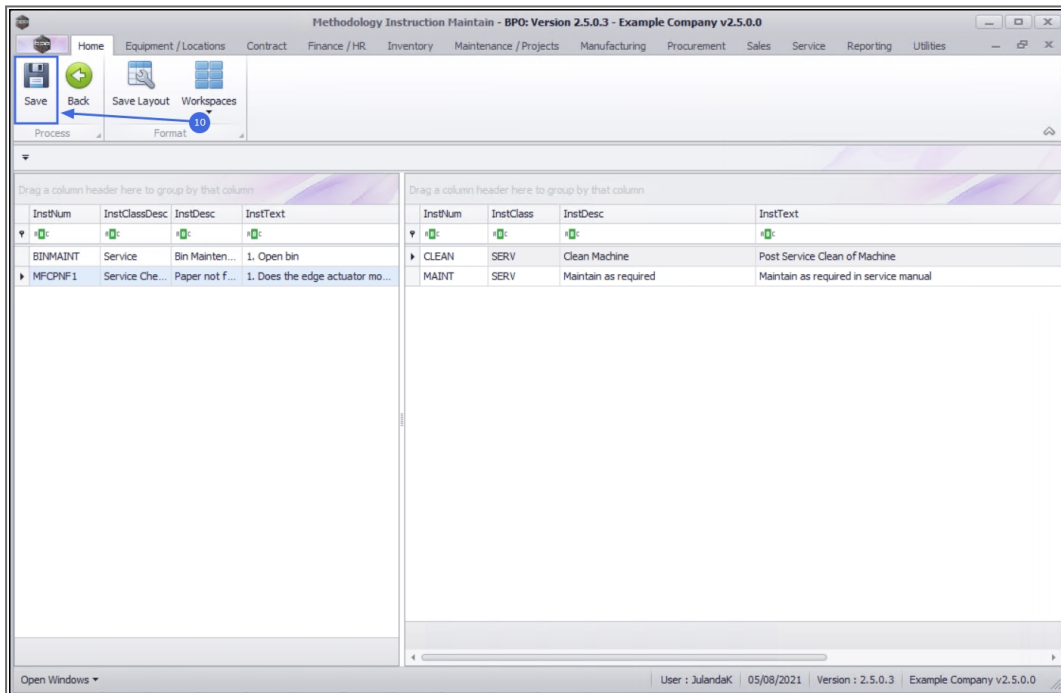
4. The **Project Methodology Maintain** screen will be displayed.
5.  **Right Click** in an available row of the **Internal Labour** frame to display the **Process** menu.
6. Click on **Modify** - Modify the Instructions.



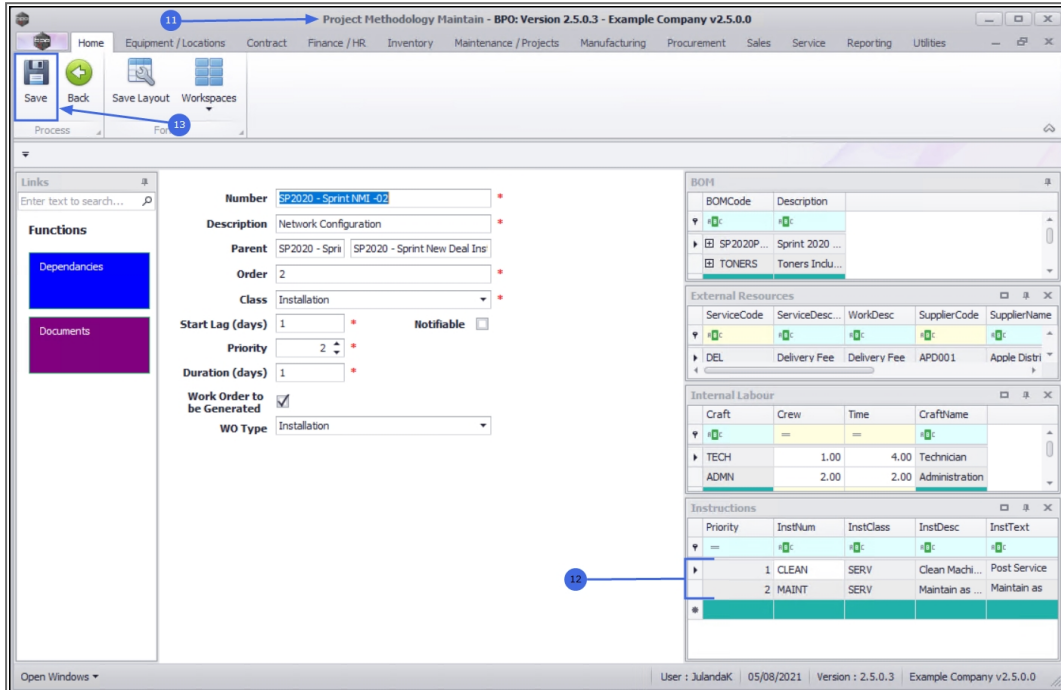
7. The **Methodology Instructions Maintain** screen will be displayed.
8. Click on the **row** selector of the Instruction on the left hand panel, you wish to **link** to this methodology.
9. **Drag and drop** the selected instruction onto the right hand panel.



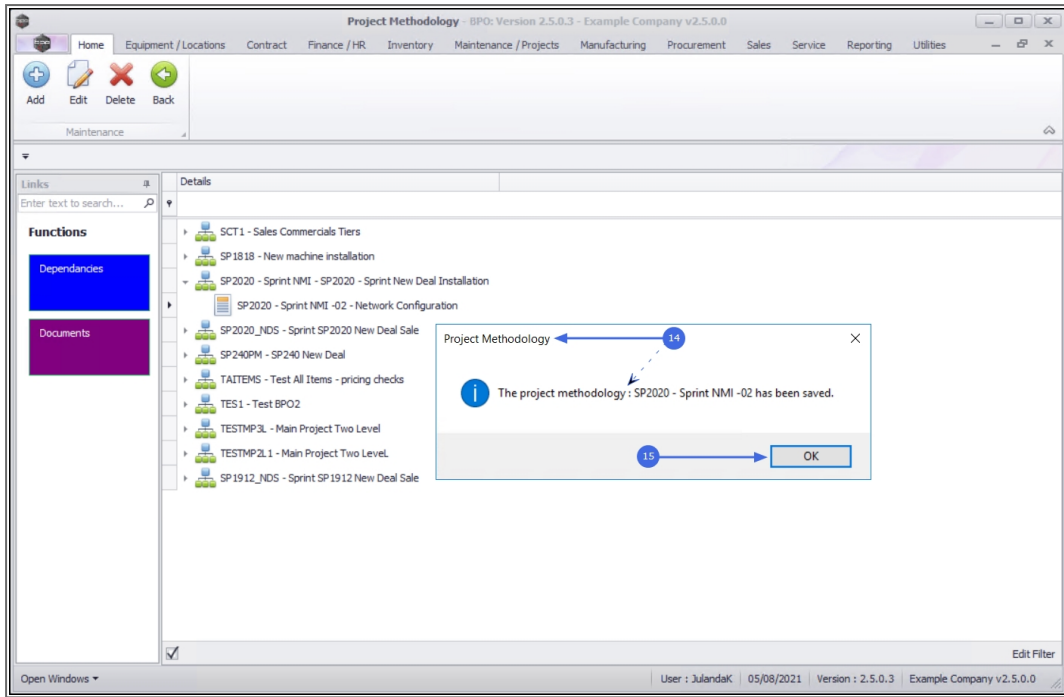
10. When you have finished linking all the instructions to the **Methodology Instruction Maintain** screen, click on **Save**.



11. You will return to the **Project Methodology Instructions** screen.
12. The Instructions frame has been updated with the Instructions you have selected.
13. Click on **Save** to update the Project Methodology.



14. When you receive the **Project Methodology** screen to confirm that;
 - **The project methodology : [methodology name] has been saved.**
15. Click on **OK**.



Related Topics

- [Remove Linked Instruction](#)

MNU.153.007